

Finish Legend						
RED = PENDING OR CHANGE						
Flooring						
NEW KEY STANDARD	Material	Manufacturer	Style	Color	Size	Description
PFT-1	Glazed Porcelain Floor Tile Grout	DaTile Mapei	Style: LINDEN POINT "FLEXCOLOR CQ"	Color: GRIGIO #LP21 #93 WARM GRAY	12x24x3/8" 3/16" grout joint	Install Running Bond Pattern
PFT-1 ALT	Glazed Porcelain Floor Tile Grout	DaTile Mapei	Style: LINDEN POINT "FLEXCOLOR CQ"	Color: GRIGIO #LP21 #93 WARM GRAY	12x24x3/8" 3/16" grout joint	Mosaic tile used ONLY where large format tile is not possible
OPT-1	Carpet Tile	Mannington Commercial	"Infinity 2 Modular" Style: TERES	GINSENG #12221	24"x24"	Installation: MONOLITHIC; Backing Infinity 2 Modular Reinforced Composite Closed Cell Polymer, Mfr. Rep: Kevin O'Brien, 860-217-1813, email: kevin_o'bryan@mannington.com
LVT-1	Luxury Vinyl Tile	PATCRAFT	"MEANING" Ecosystem #1446V	#00115, Integrate	13 1/8" x 26 3/8" Thickness: 0.098" (2.5 mm)	Installation: Monolithic Rep: Chuck Bank C 800-836-6516, chuck.bank@patcraft.com
LVT-2	Luxury Vinyl Tile	PATCRAFT	"MEANING" Ecosystem #1446V	#0070C-V1, React	13 1/8" x 26 3/8" Thickness: 0.098" (2.5 mm)	Installation: Monolithic Rep: Chuck Bank C 800-836-6516, chuck.bank@patcraft.com
LVT-3	Luxury Vinyl Tile-PLANK	Mannington Commercial	HARBOR	CHATHAM OAK, #MSC138	5" x 48" Plank	Installation: Staggered, REP: Kevin O'Bryan, (T) 800-241-2282, kevin_o'bryan@mannington.com
LVT-4	Luxury Vinyl Tile-PLANK	PATCRAFT	"ENRICH PLANK" #144TV	SOOTHE #00130	9.84"x59.06" PLANK, thickness: .098 (2.5 mm)	Square Edged, glue down, 200S Adhesive; Installation: Staggered Rep: Chuck Bank C 800-836-6516, chuck.bank@patcraft.com
RS-1	Resilient Sheet Goods: Homogenous Vinyl Flooring	TARKETT	iQ OPTIMA #0242205	SUMMER MOON 0205	Roll 6'-6" x 8'	Welding Rods to match; Use only in surgical areas
Base						
NEW KEY STANDARD	Material	Manufacturer	Style	Color		Description
WB-1	Vinyl "PERCEPTIONS" Cove Base	Johnsonite by TARKETT	"Perceptions" RECESS #RWDC-24	GREY HAZE, 24	4.25" ht.	Use in Front Lobbies and Corridors; REP: Carrie Bartucca 1-800-305-2599, carlartucca@michaelsalebian.com
WB-2	Vinyl "TRADITIONAL" Cove Base	Johnsonite by TARKETT	#CB-24.4	GREY HAZE, 24	4" HT.	Use in all enclosed rooms (ie. exam, supply, office) where LVT, Carpet, and Resilient flooring is specified; REP: Carrie Bartucca 1-800-305-2599, carlartucca@michaelsalebian.com
WB-3	Porcelain Tile Base Grout	DaTile Mapei	Style: LINDEN POINT "FLEXCOLOR CQ"	Color: GRIGIO #P-43C9 #93 WARM GRAY	3"x12" 3/16" grout joint	Bullnose Trim Porcelain Base: Use only if wall finish is other than CWT-1. Always use with TR-1
WB-4	Resilient Flooring Sheet Goods	TARKETT	iQ OPTIMA	#0205 SUMMER MOON or #245 FOGGY SHORES	6" ht.	Integral Cove, Welding Rods to match; Base color to be a companion match to RS-1 and RS-2
Transition Strips						
NEW KEY STANDARD	Material	Manufacturer	Style	Color		Description
TR-1	Stainless Steel Transition Strip	Schluter	"SCHIENNE" Reducer strip	STAINLESS STEEL		Contractor to determine height requirements Transition strip at Porcelain Tile Transition to Wall Tile; Use with WB-3 or just with CWT-1
TR-2	Vinyl Transition	Mannington Commercial	"BURKE COLLECTION" FUSION STRIP 2.5 #720	117 Platinum Metallic	2.5 mm transition	Transition strip at Sheet/Homogeneous Tile/LVT to Carpet (CPT-1)
TR-3	Stainless Steel Transition Strip	Schluter		STAINLESS STEEL		Contractor to determine height requirements Transition strip at Sheet/Homogeneous Tile/LVT to Porcelain Floor @ Bathrooms
Walls						
NEW KEY STANDARD	Material	Manufacturer	Style	Color		Description
CWT-1	Glazed Ceramic Wall Tile Grout	DaTile Mapei	"Color Wheel Collection"- LINEAR #0790	MATTE ARCTIC WHITE #0790	4"x16"x3/8"	Vertically stack ; use TR-1 at bottom
			"ULTRACOLOR FA"	#038 AVALANCHE	1/16" grout joint	For CWT-1
			"Color Wheel Collection"- LINEAR #S-1/212J	SEMI-GLOSS: DESERT GRAY #03114	1/2"x11-15/16"	Install directly above stacked wall tile
			"ULTRACOLOR FA"	#038 AVALANCHE	1/16" grout joint	
			"Color Wheel Collection"- LINEAR #S-4289MOD	MATTE ARCTIC WHITE #0790	2-1/8"x8-9/16"	Install Wall Bullnose directly above JOLLY Trim (approx. 48.5"ht. to bottom of bullnose)
			"ULTRACOLOR FA"	#038 AVALANCHE	1/16" grout joint	
PT-1	Paint	Sherwin Williams		SW 7015, REPOSE GRAY		
PT-2	Paint	Benjamin Moore		#968, DUNE WHITE		
PT-3	Paint	Benjamin Moore		OC-53 HORIZON		
PT-4	Paint	Benjamin Moore		#1005 WINTER SOUCE		
PT-5	Paint	Benjamin Moore		#717 PARADOXO		Exam Room Accent Wall Color; Office Wall Accent if needed
PT-6	Paint	Sherwin Williams		SW 8504 SKY HIGH		Bathroom Walls above CWT-1
PT-7	Paint	Benjamin Moore		#100 165 BOOTHBAY GRAY		
PT-8	Paint	Benjamin Moore		#OC-151, WHITE		

FINISH REQUIREMENTS:

- 1) No paint substitutions
- 2) Any diffusers, vents, plates are to be painted to match surface they are on.
- 3) Carpet: The work includes the installation of carpet tile; carpet contractor to prepare floor as required; ensure levelness and smoothness. Comply with general recommendations and information contained in Carpet Specifications Handbook published by the Carpet and Rug Institute. Install carpet in compliance with manufacturer's instructions and recommendations. Refer to Carpet Specifications for secondary backing and cushion information. Installer to provide seaming diagram and direction of carpet.
 - 3.1.) Repair any floor cracks, or depressions using leveling compound on floor slab. Sand/grind ridges and high spots level. Clean slab surfaces and vacuum immediately before installation.
 - 3.2) Align lines of carpet as woven using no fill strips less than 12" wide, laying all carpet in the same direction unless specified otherwise by the Designer.
 - 3.3) Seal and cut the edges with manufacturers' recommended seam sealer to prevent delamination and fiber loss. Provide resilient edge guards, reducers and transition strips at exposed edges or where two dissimilar carpet and flooring materials meet. Bind all cut edges not protected by edge guards

WC-2	Vinyl Wallcovering-Decorative	Wolf Gordon	ARCADIA GOH 31991499	WHEATON	54" REPEAT: 27"HT. X 25.25"V.	Straight Hang, Straight Match Lisa Spencer Account Executive Direct 845 641 1081 800 347 0550 Lisa.Spencer@wolfgordon.com
WC-3	Surcoal Stain and Abrasion Resistant Wallcovering	Wolf Gordon	RAMPART COLLECTION Pattern: "GRAIN" #GOH 32432230	Color: SILVER BIRCH	52" Reverse Hang, Random Match	Lisa Spencer Account Executive Direct 845 641 1081 800 347 0550 Lisa.Spencer@wolfgordon.com

Tackboards

NEW KEY STANDARD	Material	Manufacturer	Style	Color	Description
TB-1	Bulletin Board	Forbo		#2206 OYSTER SHELL	All Millwork tackboards at Reception Desk

Wall Protection

NEW KEY STANDARD	Material	Manufacturer	Style	Color	Description
CG-1	Flush Mount Corner Guards	INPRO (IPC)	#160F Flush Mount, Full height	#0238 Feather	2" Verify Model with Architect
CR-2	Rolled Rigid Sheet	INPRO (IPC)	"Palladium" 1400 GR	#0151 GRAY STONE	Verify if required on Project
WG-1	Wall Guard	INPRO (IPC)	1600	#0238 Feather	Verify if required on Project

Wood & Plastics

NEW KEY STANDARD	Material	Manufacturer	Style	Color	Description
PL-1	Plastic Laminat	WILSONART	Wood Look	#15602-31 ACORN VELVET ELM, Traceless Finish	Use matching PVC Edgebanding on doors by EdgeCo #7895
PL-2	Plastic Laminat	WILSONART		D427-60 LINEN, Matte Finish	Use matching PVC Edgebanding on doors by EdgeCo #1079
PL-3	NOT USED				
PL-4	Plastic Laminat	WILSONART	Premium Grade	#7967K-12 PARK ELM (Soft Grain Finish w/Acon)	Installed with grain running VERTICAL; Use matching PVC Edgebanding on doors by EdgeCo #710
PL-5	Plastic Laminat	WILSONART	Premium Grade	#5012K-19, MAGNOLIA, Leno Weave Finish	Use matching PVC Edgebanding on doors by EdgeCo # 9598
PL-6	Plastic Laminat	WILSONART	Premium Grade	#8203K-26, SILVER OAK PLY	Installed with grain running VERTICAL; Use matching PVC Edgebanding on doors by EdgeCo # 7897
PL-7	Plastic Laminat	WILSONART	Premium Grade	#4877-38 GREY MESH	Installed with grain running VERTICAL; Use matching PVC Edgebanding on doors by EdgeCo # ?
SS-1	Solid Surface	COORIAN		CAMEO WHITE	Available 30"x144"

HARDWARE

NEW KEY STANDARD	Material	Manufacturer	Style	Color	Description
CP-1	Cabinet Pull	Hafele	"HANDLE, ZINC" 111.95.102	MATT NICKEL, 103ZM65	136.5mm L x 12mm H x 27mm D For all Vertical Cabinet Pulls

Window Film for Glass

NEW KEY STANDARD	Material	Manufacturer	Style	Color	Description
WF-1	Window Film, Translucent	SOLYX	SX-3131	ECO Dusted	12", 24", 36", 48" and 60" available widths For glass where privacy is required
WF-2	Window Film, Decorative	SOLYX	SX-C444	White Waters	60" available widths For glass where decorative but semi-transparent is required

Window Treatments

NEW KEY STANDARD	Material	Manufacturer	Style	Color	Description
WT-1	Roller Shade, Translucent Window Treatment	Mecho Shade	"ThermoVeil" Basket Weaves 1300 series (5% open)	#1319 SILVER BIRCH	Stocked: 63", 96" and 128" width Exterior Windows; Width of shade to match mullion to mullion
WT-2	Roller Shade, Blackout Window Treatment	Mecho Shade	"Equinox" Blackout #0100 Series (opaque)	#0105 SILVER	Stocked: 96" width Exterior Windows; Width of shade to match mullion to mullion; RAILROAD for seamless shade per window

Cubicle Curtains

NEW KEY STANDARD	Material	Manufacturer	Style	Color	Description
CC-1	Disposable Traditional Cubicle Curtains	CUBE CARE - by VIZENT	DRX0016, ARCHITEX		72"W X 84"HT (Mesh HT: 18") or 72"W X86"HT (Mesh 0 HT: 30") Where required, Verify ht. with Architect; Rep: Vanessa Rios, 305-556-8700 ext. 103, vanessa@cube-care.com

Ceilings

NEW KEY STANDARD	Material	Manufacturer	Style	Color	Description
CLG-1	Acoustical	ARMSTRONG	PRELUDE XL 15/16" GRID, "DUNE" SECOND LOOK" #2712, ANGLED TEGULAR EDGE	WHITE	24" X 48" Refer to Architect's RCP plans for tile sizes
CLG-2	Acoustical	ARMSTRONG	PRELUDE XL 15/16" GRID, "DUNE" #1774, ANGLED TEGULAR EDGE	WHITE	24" X 24" Refer to Architect's RCP plans for tile sizes

4.0. Painting: All paint to be VOC-free Product, unless otherwise noted. The work includes, but is not limited to, the painting and finishing of all exposed surfaces at new construction. Refer to Finish Plans for type and location.

- 4.1) Provide primers and other undercoat paint produced by the same manufacturer as finish coat. Apply per manufacturers' instructions and recommendations.
- 4.2) At Gypsum Wallboard: Primer:Latex Wall Primer; Finish: Latex Eggshell - two coats.
- 4.3) At Metals: Primer Filler: Alkyd Metal Primer; Finish: Alkyd Semi-Gloss Enamel - 2 coats.
- 4.4) At Wood (Painted): Primer: Oil base; Finish: Semi-Gloss Acrylic Latex.
- 4.5) Paint surfaces in compliance with manufacturers' instructions. Properly prepare and clean all surfaces in accordance with finish manufacturers' requirements prior to commencing painting.
- 5) Wallcovering: Vinyl wall covering to be installed in strict accordance with manufacturer's recommendations. All walls to be smooth and blemish free before installation. Adhesives: Provide manufacturers' recommended Low VOC adhesive, primer, and sealer. Prepare and utilize adhesives per manufacturer's instructions and recommendations.
- 6) LVT & Vinyl Enhanced Tile Flooring: Install as recommended by manufacturer using manufacturers' own Low VOC adhesives and accessories.
- 7) Run all flooring under millwork.
- 8) Window Shades: Fabricator to determine best width to achieve no seams. Provide shades at each individual window.
- 9) Window Film on interior glass: Refer to Architect's drawings for film requirements.

MILLWORK SCHEDULE

LOCATION	CODE	Material	Description
Front Reception Desk- Main Lobby	MLK-1	SS-1	Transaction Top
		TB-1	Fabric Tackboard above worksurface between workcounter & transaction top
		SS-1	Workcounter
		PL-1	UPPER front panel on visitor side and FULL PANEL on desk side; grain runs vertically
		PL-2	LOWER front panel on visitor side
Check Out Desk-	MLK-2	SS-1	Transaction Top
		TB-1	Fabric Tackboard above worksurface between workcounter & transaction top
		SS-1	Workcounter
		PL-1	UPPER front panel on visitor side and FULL PANEL on desk side; grain runs vertically
		PL-2	LOWER front panel on visitor side
Provider Station	MLK-3	WB-1	Vinyl wall base at toe kick to match all walls
		SS-1	Transaction Top
		TB-1	Fabric Tackboard above worksurface between workcounter & transaction top
		SS-1	Workcounter
		PL-1	UPPER front panel on visitor side and FULL PANEL on desk side; grain runs vertically
ALL LAB ROOMS	MLK-4	PL-2	LOWER front panel on visitor side
		WB-1	Vinyl wall base at toe kick to match all walls
		PL-4	Upper Cabinets; Use matching PVC edgebanding
		SS-1	Full height solid surface backsplash on back wall; silicone edge between counter & backsplash
		SS-1	Counter & Sink Apron & 4" SIDE WALL backsplashes
ALL EXAM ROOMS	MLK-5	PL-4	Sinks to be by Corian, Cameo White to match countertops
		CP-1	Removable panel @ sink; lower base cabinets, grain runs vertically; Use matching PVC edge banding
		PL-5	Drawer pulls on upper & lower cabinets
		SS-1	Upper Cabinets; Use matching PVC edgebanding
		SS-1	Full height solid surface backsplash on back wall; silicone edge between counter & backsplash
TOUCHDOWN	MLK-6	PL-4	Counter & Sink Apron & 4" SIDE WALL backsplashes
		PL-2	Sinks to be by Corian, Cameo White to match countertops
		PL-4	Removable panel @ sink; lower base cabinets, grain runs vertically; Use matching PVC edge banding
		CP-1	Drawer pulls on upper & lower cabinets
		PL-4	Upper Cabinets; Use matching PVC edgebanding
ULTRASOUND ROOMS	MLK-7	PL-4	Counter & 4" backsplashes
		SS-1	Removable panel @ sink; lower base cabinets, grain runs vertically; Use matching PVC edge banding
		SS-1	Drawer pulls on upper & lower cabinets
		SS-1	Upper Cabinets; Use matching PVC edgebanding
		SS-1	Full height solid surface backsplash on back wall; silicone edge between counter & backsplash
PROVIDER BACK COUNTER	MLK-8 A&B	PL-4	Counter & Sink Apron & 4" SIDE WALL backsplashes
		CP-1	Sinks to be by Corian, Cameo White to match countertops
		PL-4	Removable panel @ sink; lower base cabinets, grain runs vertically; Use matching PVC edge banding
		CP-1	Drawer pulls on upper & lower cabinets
		PL-1	Upper Cabinets; Use matching PVC edgebanding
PROCEDURE ROOM	MLK-9	TB-1	Fabric Tackboard above worksurface between workcounter & upper cabinets
		PL-1	Counter & 4" backsplashes
		CP-1	Removable panel @ sink; lower base cabinets, grain runs vertically; Use matching PVC edge banding
		PL-4	Drawer pulls on upper & lower cabinets
		SS-1	Upper Cabinets; Use matching PVC edgebanding
LPN OFFICE	MLK-10	PL-1	Full height solid surface backsplash on back wall; silicone edge between counter & backsplash
		PL-2	Counter & Sink Apron & 4" SIDE WALL backsplashes
		TB-1	Sinks to be by Corian, Cameo White to match countertops
		PL-1	Removable panel @ sink; lower base cabinets, grain runs vertically; Use matching PVC edge banding
		CP-1	Drawer pulls on upper & lower cabinets
Staff Lounge-Kitchen Cabinetry	MLK-11	PL-6	Upper Cabinets; Use matching PVC Edgebanding
		SS-1	Full height solid surface backsplash on back wall; silicone edge between counter & backsplash & 4" SIDE WALL backsplashes
		SS-1	Counter & Sink Apron ;Sink to be undermount stainless steel Sink removable panel; lower base cabinets
		CP-1	Entire Refrigerator Enclosure- grain runs vertically Drawer pulls for all cabinet doors- install horizontally
		PL-7	Drawer pulls for all cabinet doors- install horizontally
Staff Lounge-Lunch Counter	MLK-12	PL-7	LUNCH counter
ALL WINDOW SILLS		PL-2	Vertical p-lam supports, if required. Check with Architect if required.

Montefiore | Nyack

h2

DESIGN

STUDIO
P 860.485.0080
F 860.485.0313
P.O. BOX 339
HARWINTON, CT 06791
WWW.H2DESIGN.COM

FOR CONSTRUCTION

3-11-21

LVT Designations/Paint/Millwork

NO. DATE REVISION

ISSUE/REVISION

PROJECT NAME:
OUTPATIENT CLINIC
MONTEFIORE HEALTH
SYSTEM
17 SQUADRON BLVD.

BUILDING NAME & ADDRESS
17 SQUADRON BLVD,
NEW CITY, NY 10956

THIRD FLOOR
PROJECT NUMBER

DRAWING TITLE:
MATERIAL SCHEDULE/NOTES
MILLWORK SCHEDULE

SCALE
AS NOTED

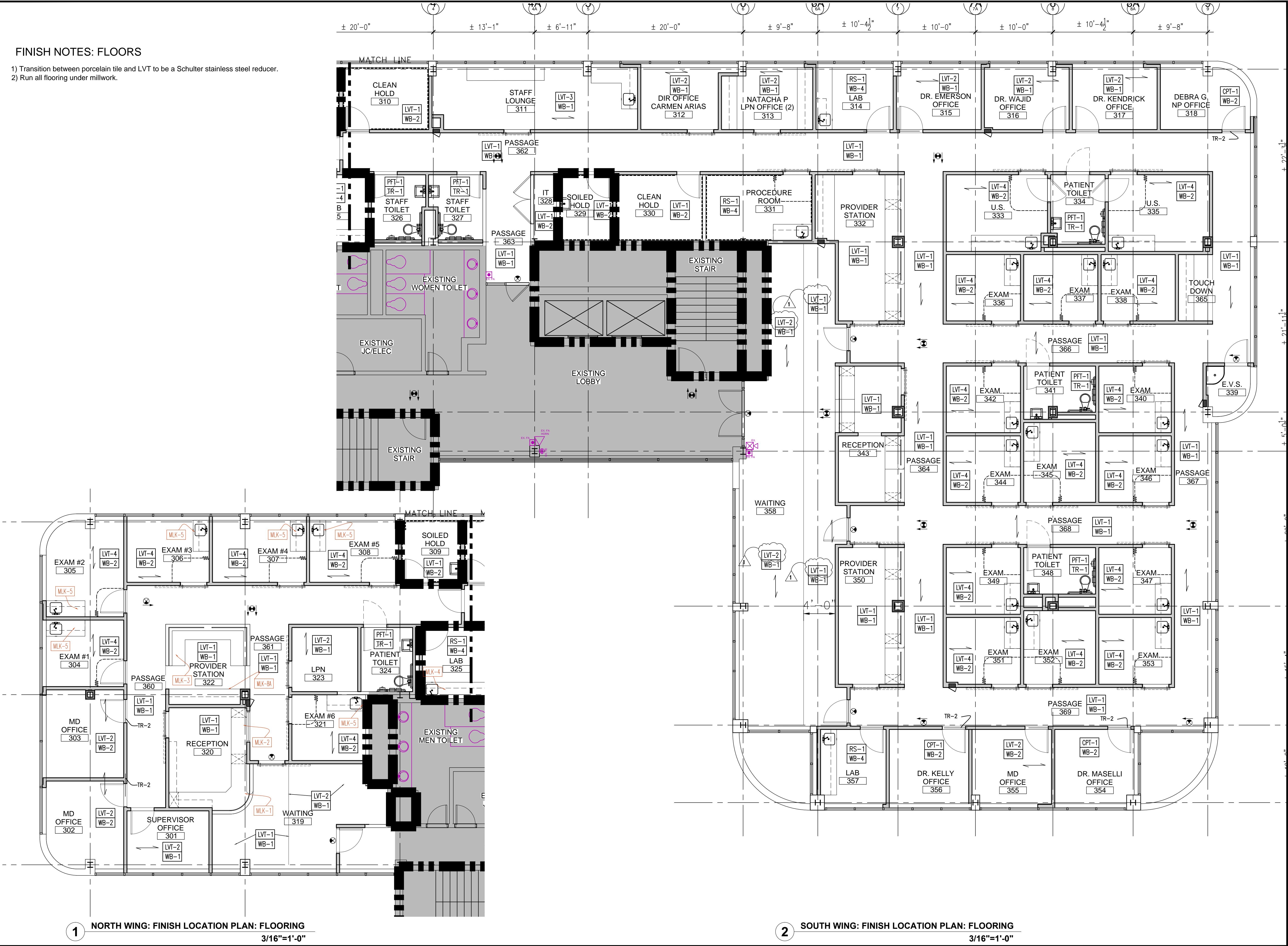
DRAWN BY
MZ

DATE
2-10-22

DRAWING NUMBER
ID.10.
1 OF 3

FINISH NOTES: FLOORS

- 1) Transition between porcelain tile and LVT to be a Schultze stainless steel reducer.
2) Run all flooring under millwork.



Montefiore | Nyack

h2

DESIGN

STUDIO
P. 860.455.0080
F. 860.455.0313
P.O. BOX 339
HARTWICK, CT 06791
WWW.H2DESIGN.COM

FOR CONSTRUCTION

1	3-11-21	LVT Designations/Paint/Millwork
NO.	DATE	REVISION
ISSUE/REVISION		

PROJECT NAME
OUTPATIENT CLINIC
MONTEFIORE HEALTH
SYSTEM
17 SQUADRON BLVD.
BUILDING NAME & ADDRESS
17 SQUADRON BLVD.
NEW CITY, NY 10956
THIRD FLOOR
PROJECT NUMBER

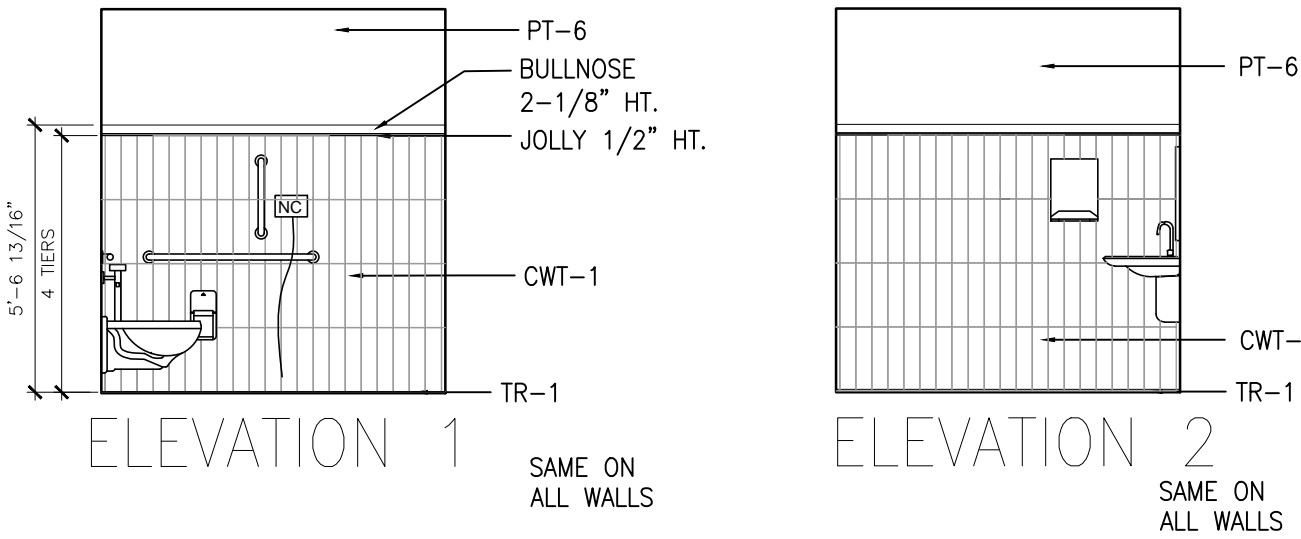
DRAWING TITLE FINISH LOCATION PLAN: FLOORING/BASE	
SCALE AS NOTED	DRAWN BY M2
CAD FILENAME	DATE 2-10-22
DRAWING NUMBER	

ID.11.

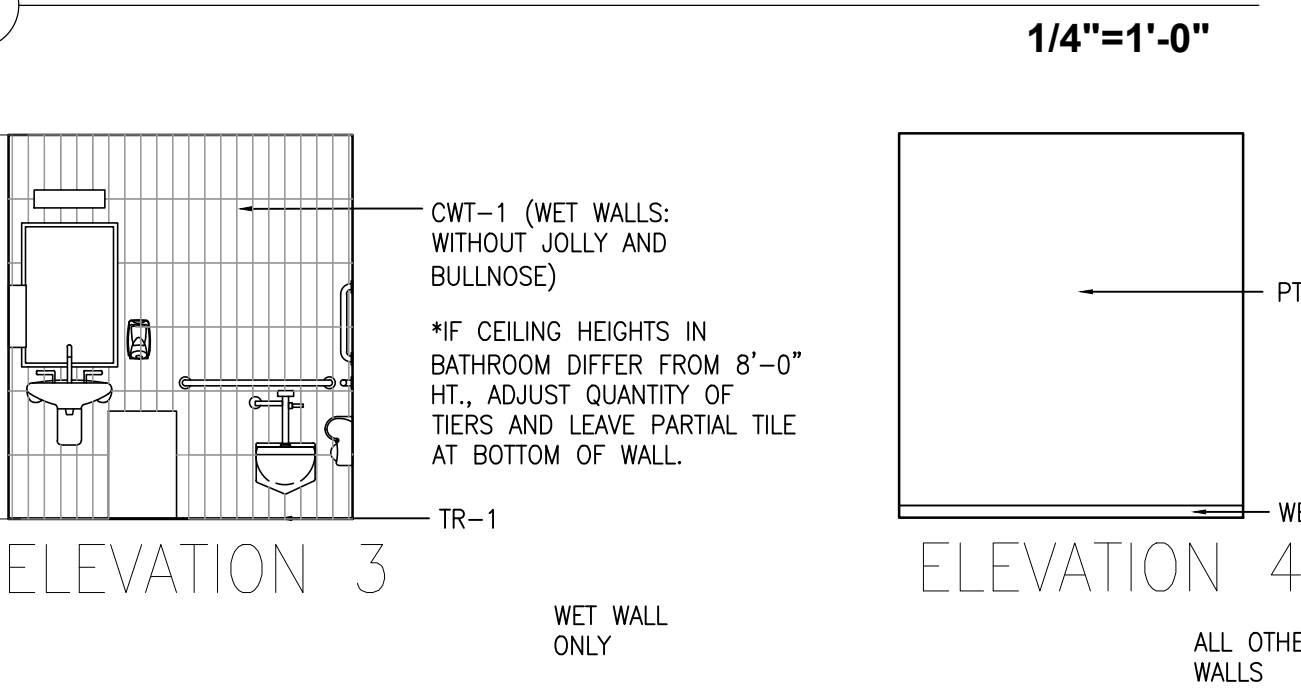
1 OF 2

FINISH NOTES: WALLS

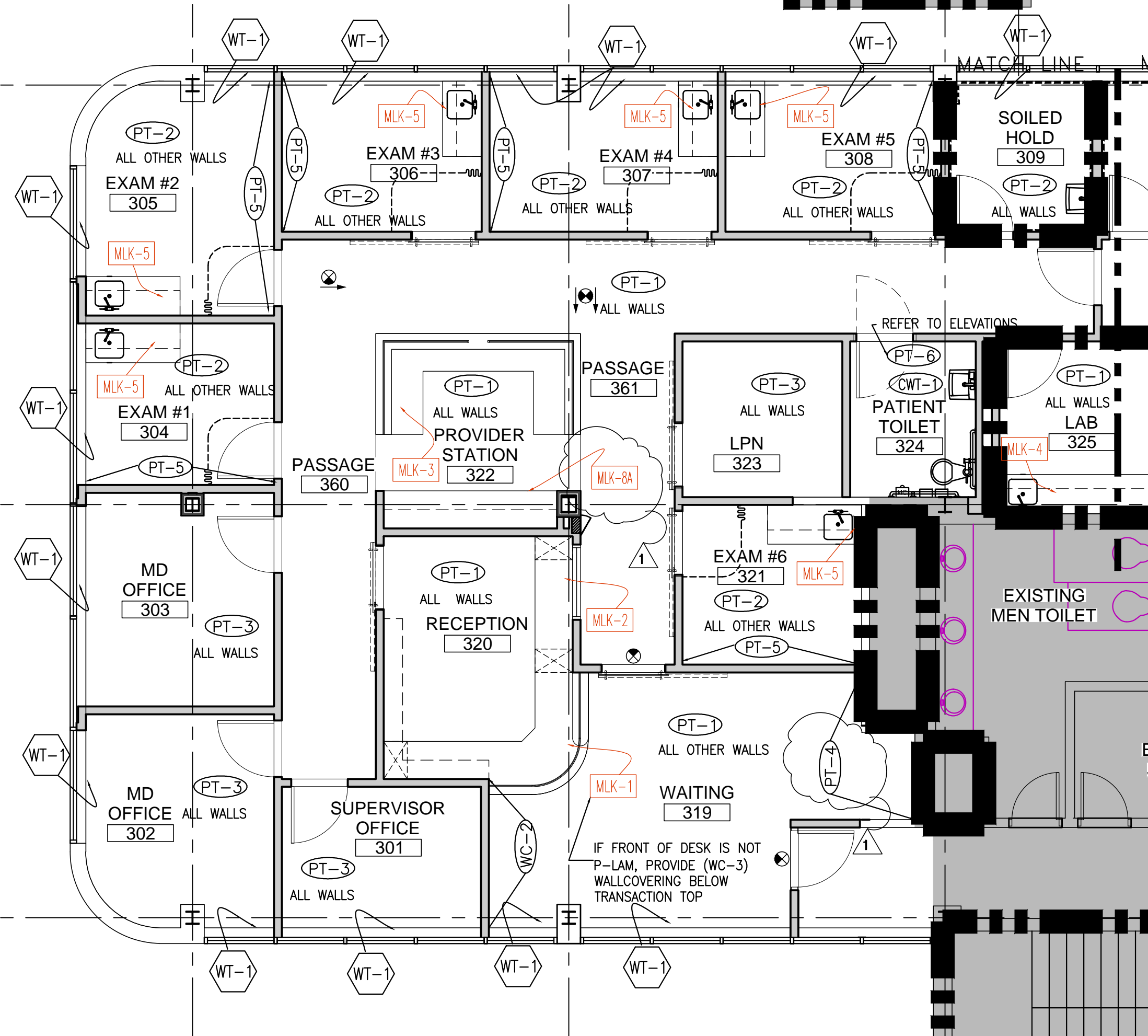
- 1) Refer to Sheet ID.1.0. for MATERIAL LIST.
2) BARN SLIDING DOORS: Wood, stained to match P-lam (PL-1). Submit sample for approval.
3) SWINGING INTERIOR DOORS: Wood, painted with PT-2, EXCEPT DOORS into waiting rooms to be Wood, stained to match P-lam (PL-1).
4) DOOR FRAMES: Painted with PT-2.
5) All corner guards to be CG-1, refer to Architect's drawings for complete list of locations.
6) Any wall guards, chair rails, or crash rails to be #0238 Feather, if required.
7) Any rolled rigid sheet wall protection to be #0151 Graystone, if required.
8) Any sheetrock ceilings or soffits to be painted PT-8.



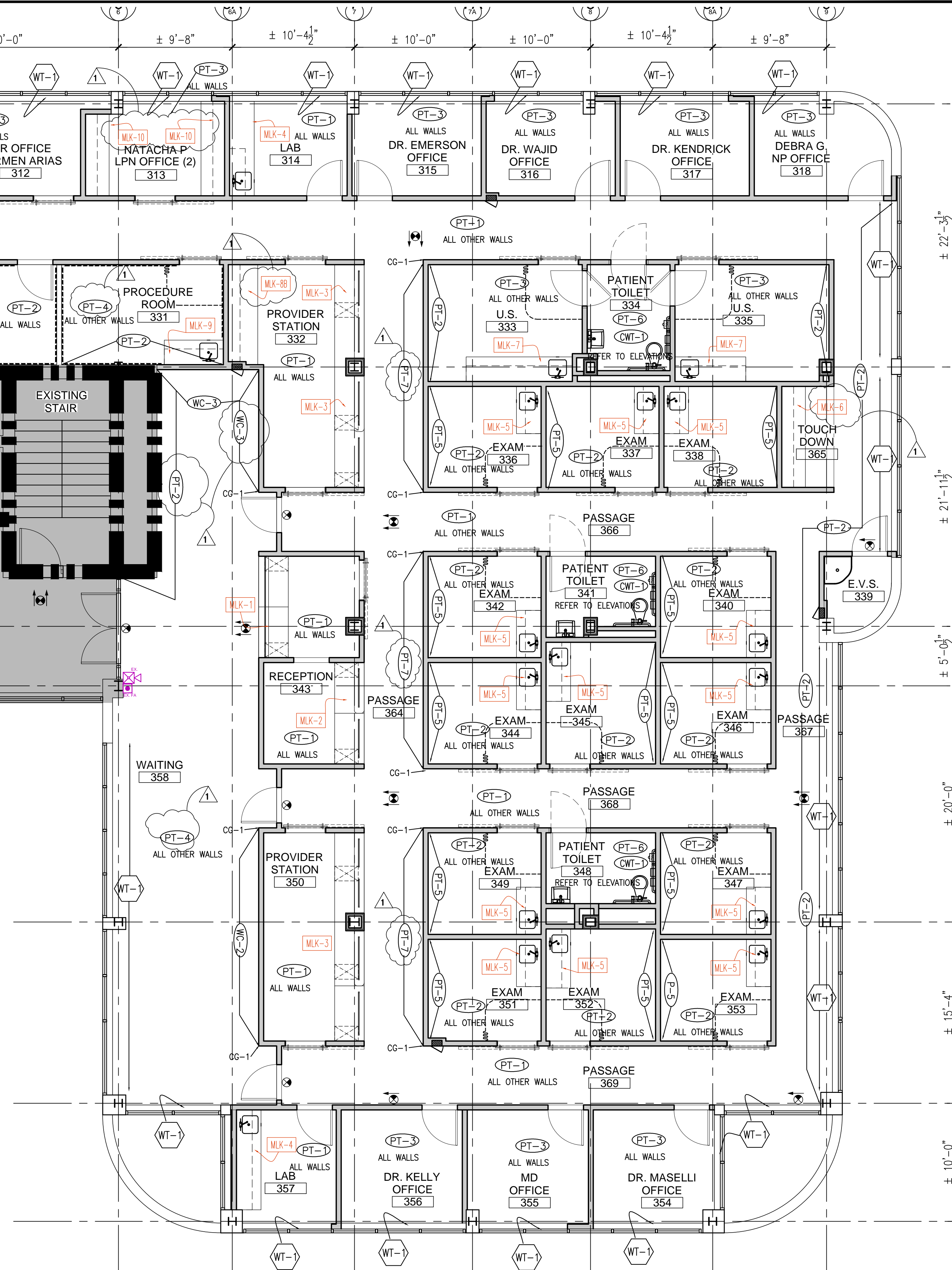
3 TYP. ELEVATIONS FOR PATIENT BATHROOMS



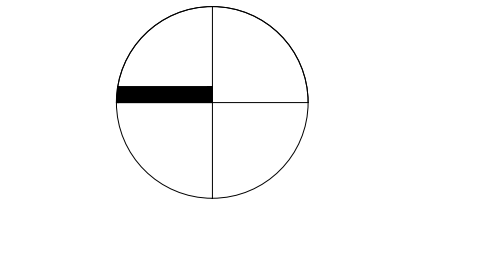
4 TYP. ELEVATIONS FOR STAFF BATHROOMS



1 NORTH WING: FINISH LOCATION PLAN: WALLS + MILLWORK
3/16"=1'-0"



2 SOUTH WING: FINISH LOCATION PLAN: WALLS + MILLWORK
3/16"=1'-0"



FOR CONSTRUCTION

1	3-11-21	LVT Design/PAINT/MILLWORK
NO.	DATE	REVISION
ISSUE/REVISION		

PROJECT NAME
**OUTPATIENT CLINIC
MONTEFIORE HEALTH
SYSTEM
17 SQUADRON BLVD.**

BUILDING NAME & ADDRESS
17 SQUADRON BLVD.
NEW CITY, NY 10956

THIRD FLOOR
PROJECT NUMBER

DRAWING TITLE FINISH LOCATION PLAN WALLS + MILLWORK	DRAWN BY MZ
SCALE AS NOTED	DATE 2-10-22
CAD FILENAME	DRAWING NUMBER ID.12. 3 OF 3