

Flooring

NEW KEY STANDARD	Material	Manufacturer	Style	Color	Size	Description
CC	Concrete			clear sealer		
WOM-1	Walk-off Mat	MOHAWK GROUP	TUFF STUFF II COLLECTION Pattern: STEP IN STYLE II #QJL 312	#966 COBALT	24x24	Installation: QUARTER TURN. MFR REP: John Talio, 914-953-5368, John.Talio@mohawkind.com
PFT-1	Glazed Porcelain Floor Tile Grout	DaTile Mapei	Style: LINDEN POINT "FLEXCOLOR CO"	Color: GRIGIO #LP21 #93 WARM GRAY	12x24x3/8" 3/16" grout joint	Install Running Bond Pattern
CPT-1	Carpet Tile	Mannington Commercial	"Infinity 2 Modular" Style: TERES	GNSENS #12221	24"x24"	Installation: MONOLITHIC; Backing: Infinity 2 Modular Reinforced Composite Closed Cell Polymer; Mfr. Rep: Kevin O'Brien, 860-217-1813, email: kevin.o'bryan@manningtong.com
LVT-1	Luxury Vinyl Tile	PATCRAFT	"MEANINGS" Ecosystem #1446V	#00115, Integrate	13.18" x 26.38" Thickness: 0.098" (2.5 mm)	Installation: Monolithic Rep: Chuck Bank C 860-305-6516, chuck.bank@patcraft.com
LVT-2	Luxury Vinyl Tile	PATCRAFT	"MEANING" Ecosystem #1446V	#00500, RESONATE	13.18" x 26.38" Thickness: 0.098" (2.5 mm)	Installation: Monolithic Rep: Chuck Bank C 860-305-6516, chuck.bank@patcraft.com
LVT-3	Luxury Vinyl Tile-PLANK	Mannington Commercial	HARBOR	CHATHAM OAK, #MSC138	5" x 48" Plank	Installation: Staggered, REP: Kevin O'Brien, (T) 800-241-2262, kevin.o'bryan@manningtong.com
LVT-4	Luxury Vinyl Tile-PLANK	PATCRAFT	"ENRICH PLANK" #1447V	SOOTHE #00130	9.84"x59.06" PLANK, thickness: .098 (2.5 mm)	Square Edged; glue down, 2000S Adhesive; Installation: Staggered Rep: Chuck Bank C 860-305-6516, chuck.bank@patcraft.com
RS-2	Resilient Sheet Goods Homogeneous Vinyl Flooring	TARKETT	IQ OPTIMA #324245	FOGGY SHORES 245	Roll 6'-6" x 82"	Welding Rods to match; Use only in surgical areas
ST-1	Vinyl Stair Tread/Riser Combination	C.I. TAKRON exclusively from CBC Flooring www.cbcflooring.com	"PATHWAYS" #91-5WP	GREY #91	6" width	Contrasting nosing #5WP; Tread has slip resistant pattern; Riser has matching smooth pattern; Distributor: Michael Halebian & Co., Carme Bartucca cell: 860-305-2599, cbartucca@michaelhalebian.com

Base

NEW KEY STANDARD	Material	Manufacturer	Style	Color		Description
WB-1	Vinyl "PERCEPTIONS" Cove Base	Johnsonite by TARKETT	"Perceptions" RECESS #RWDC-24	GREY HAZE, 24	4.25" ht.	Use in Front Lobbies and Corridors; REP: Carme Bartucca 1-860-305-2599, cbartucca@michaelhalebian.com
WB-2	Vinyl "TRADITIONAL" Cove Base	Johnsonite by TARKETT	#CB-24.4	GREY HAZE, 24	4" HT.	Use in all enclosed rooms (ie. exam, supply, office) where LVT, Carpet, and Resilient flooring is specified; REP: Carme Bartucca 1-860-305-2599, cbartucca@michaelhalebian.com
WB-3	Porcelain Tile Base Grout	DaTile Mapei	Style: LINDEN POINT "FLEXCOLOR CO"	Color: GRIGIO #P-43C9 #93 WARM GRAY	3"x12" 3/16" grout joint	Bullnose Trim Porcelain Base. Use only if wall finish is other than CWT-1. Always use with TR-1
WB-4	Resilient Flooring-Sheet Goods	TARKETT	iQ OPTIMA	#245 FOGGY SHORES	6" ht.	Integral Cove, Welding Rods to match; Base color to be a companion match to RS-2

Transition Strips

NEW KEY STANDARD	Material	Manufacturer	Style	Color	Description
TR-1	Stainless Steel Transition Strip	Schluter	"SCHENNE" Reducer strip	STAINLESS STEEL	Contractor to determine height requirements Transition strip at Porcelain Tile Transition to Wall Tile. Use with WB-3 or just with CWT-1
TR-2	Vinyl Transition	Mannington Commercial	"BURKE COLLECTION" FUSION STRIP 2.5 #720	117 Platinum Metallic	2.5 mm transition Transition strip at Sheet/Homogeneous Tile/LVT to Carpet (CPT-1)
TR-3	Stainless Steel Transition Strip	Schluter		STAINLESS STEEL	Contractor to determine height requirements Transition strip at Sheet/Homogeneous Tile/LVT to Porcelain Floor @ Bathrooms

Walls

NEW KEY STANDARD	Material	Manufacturer	Style	Color	Description
CWT-1	Glazed Ceramic Wall Tile	DaTile	"Color Wheel Collection"-LINEAR #0790	MATTE ARCTIC WHITE	4"x16"x3/8" Vertically stack ; use TR-1 at bottom
	Grout	Mapei	"ULTRACOLOR FA"	#38 AVALANCHE	1/16" grout joint For CWT-1
	"Jolly" Accent Trim	DaTile	"Color Wheel Collection"- LINEAR SEMI-GLOSS: DESERT GRAY #X114		1/2"x11-15/16" Install directly above stacked wall tile
	Grout	Mapei	"ULTRACOLOR FA"	#38 AVALANCHE	1/16" grout joint
	Bullnose Trim at top Wall tile	DaTile	"Color Wheel Collection"-LINEAR #S-4289MOD	MATTE ARCTIC WHITE #0790	2-1/8"x8-9/16" Install Wall Bullnose directly above JOLLY Trim (approx. 48.5"ht. to bottom of bullnose)
	Grout	Mapei	"ULTRACOLOR FA"	#38 AVALANCHE	1/16" grout joint
PT-1	Paint	Sherwin Williams		SW 7015, REPOSE GRAY	
PT-2	Paint	Benjamin Moore		#968, DUNE WHITE	
PT-3	Paint	Benjamin Moore		OC-53 HORIZON	
PT-4	Paint	Benjamin Moore		#1605 WINTER SOLICE	
PT-5	Paint	Benjamin Moore		#717 PARADISO	
PT-6	Paint	Sherwin Williams		SW 6504 SKY HIGH	Bathroom Walls
PT-7	Paint	Benjamin Moore		#HC 165 BOOTHBAY GRAY	
PT-9	Paint	Benjamin Moore		#OC-151, WHITE	

FINISH REQUIREMENTS:

- No paint substitutions
- Any diffusers, vents, plates are to be painted to match surface they are on.
- Carpet: The work includes the installation of carpet tile; carpet contractor to prepare floor as required; ensure levelness and smoothness. Comply with general recommendations and information contained in Carpet Specifications Handbook published by the Carpet and Rug Institute. Install carpet in compliance with manufacturer's instructions and recommendations. Refer to Carpet Specifications for secondary backing and cushion information. Installer to provide seaming diagram and direction of carpet.
 - Repair any floor cracks, or depressions using leveling compound on floor slab. Sand/grind ridges and high spots level. Clean slab surfaces and vacuum immediately before installation.
 - Align lines of carpet as woven using no fill strips less than 12" wide, laying all carpet in the same direction unless specified otherwise by the Designer.
 - Seal and cut the edges with manufacturers' recommended seam sealer to prevent delamination and fiber loss. Provide resilient edge guards, reducers and transition strips at exposed edges or where two dissimilar carpet and flooring materials meet. Bind all cut edges not protected by edge guards

WC-2	Vinyl Wallcovering-Decorative	Wolf Gordon	ARCADIA GOH 31991489	WHEATON	54"; REPEAT: 27"HT. X 25.25"V.	Straight Hang, Straight Match Lisa Spencer Account Executive Direct 845 641 1081 800 347 0550 Lisa.Spencer@wolfgordon.com
	Surcoat Stain and Abrasion Resistant Wallcovering	Wolf Gordon	RAMPART COLLECTION Pattern "GRANITE" #GOH 32432230		52" Reverse Hang Random Match	Lisa Spencer Account Executive Direct 845 641 1081 800 347 0550 Lisa.Spencer@wolfgordon.com

Tackboards

NEW KEY STANDARD	Material	Manufacturer	Style	Color	Description
TB-1	Bulletin Board	Forbo		#2206 OYSTER SHELL	At Millwork tackboards at Reception Desk

Wall Protection

NEW KEY STANDARD	Material	Manufacturer	Style	Color	Description
CG-1	Flush Mount Corner Guards	INPRO (IPC)	#160F Flush Mount, Full height	#0238 Feather	Z" Verify Model with Architect
CR-2	Rolled Rigid Sheet	INPRO (IPC)	"Palladium"	#0151 GRAY STONE	Verify if required on Project
WG-1	Wall Guard	INPRO (IPC)	1400 OR 1600	#0238 Feather	Verify if required on Project

Wood & Plastics

NEW KEY STANDARD	Material	Manufacturer	Style	Color	Description
PL-1	Plastic Laminate	WILSONART	Wood Look	#15902-31 ACORN VELVET ELM, Traceless Finish	Use matching PVC Edgebanding on doors by EdgeCo #7806
PL-2	Plastic Laminate	WILSONART		D427-60 LINEN, Matte Finish	Use matching PVC Edgebanding on doors by EdgeCo #1079
PL-3	NOT USED				
PL-4	Plastic Laminate	WILSONART	Premium Grade	#7907K-12 PARK ELM (Salt Grain Finish w/Acorn)	Installed with grain running VERTICAL; Use matching PVC Edgebanding on doors by EdgeCo #7710
PL-5	Plastic Laminate	WILSONART	Premium Grade	#5012K-19, MAGNOLIA, Leno Wave Finish	Use matching PVC Edgebanding on doors by EdgeCo #5029
PL-6	Plastic Laminate	WILSONART	Premium Grade	#6203K-28, SILVER OAK PLY	Installed with grain running VERTICAL; Use matching PVC Edgebanding on doors by EdgeCo #7867
PL-7	Plastic Laminate	WILSONART	Premium Grade	#4877-38 GREY MESH	Installed with grain running VERTICAL; Use matching PVC Edgebanding on doors by EdgeCo #7
SS-1	Solid Surface	CORIAN	CAMEO WHITE	Available 30"x14"	Rep: Stacey Smith, Outside Sales Representative Cell (617) 777-3759 Parkside, Inc. 455 Sullivan Avenue South Windsor, CT. 06074

HARDWARE

NEW KEY STANDARD	Material	Manufacturer	Style	Color	Description
CP-1	Cabinet Pull	Hafele	"HANDLE_ZINC" 111 95 102	MATT NICKEL, 103ZN95	136.5mm L x 12mm H x 27mm D For all Vertical Cabinet Pulls

Window Film for Glass

NEW KEY STANDARD	Material	Manufacturer	Style	Color	Description
WF-1	Window Film, Translucent	SOLYX	SX-3131	ECO Dusted	12", 24", 36", 48" and 60" available widths For glass where privacy is required
WF-2	Window Film, Decorative	SOLYX	SX-C444	White Waters	60" available widths For glass where decorative but semi-transparent is required

Window Treatments

NEW KEY STANDARD	Material	Manufacturer	Style	Color	Description
WT-1	Roller Shade-Translucent Window Treatment	Mecho Shade	"ThermoVel" Basket Weaves 1300 series (5% open)	#1319 SILVER BIRCH	Stocked 63", 96" and 126" width Exterior Windows; Width of shade to match mullion to mullion.
WT-2	Roller Shade-Blackout Window Treatment	Mecho Shade	"Equinox" Blackout #0100 Series (opaque)	#0105 SILVER	Stocked 98" width Exterior Windows; Width of shade to match mullion to mullion; RAILROAD for seamless shade per window

Cubicle Curtains

NEW KEY STANDARD	Material	Manufacturer	Style	Color	Description
CC-1	Disposable Traditional Cubicle Curtains	CUBE CARE - by WIZENT	DRX016, ARCHITEX		72"W X 84"HT (Mesh HT: 18") or 72"W X 96"HT (Mesh 0"HT: 30") Where required, Verify ht. with Architect; Rep: Vanessa Rios, 305-556-8700 ext. 103, vanessa@cubeacare.com

Ceilings

NEW KEY STANDARD	Material	Manufacturer	Style	Color	Description
CLG-1	Acoustical	ARMSTRONG	PRELUDE XL 15/16" GRID, "TUNE SECOND LOOK" #2712 ANGLED TEGULAR EDGE	WHITE	24" X 48" Refer to Architect's RCP plans for tile sizes
CLG-2	Acoustical	ARMSTRONG	PRELUDE XL 15/16" GRID, "TUNE" #1774 ANGLED TEGULAR EDGE	WHITE	24" X 24" Refer to Architect's RCP plans for tile sizes

4.0. Painting: All paint to be VOC-free Product, unless otherwise noted. The work includes, but is not limited to, the painting and finishing of all exposed surfaces at new construction. Refer to Finish Plans for type and location.

- Provide primers and other undercoat paint produced by the same manufacturer as finish coat. Apply per manufacturers' instructions and recommendations.
- At Gypsum Wallboard: Primer:Latex Wall Primer; Finish: Latex Eggshell - two coats.
- At Metals; Primer Filler: Alkyd Metal Primer; Finish: Alkyd Semi-Gloss Enamel - 2 coats.
- At Wood (Painted): Primer: Oil base; Finish: Semi-Gloss Acrylic Latex.
- Paint surfaces in compliance with manufacturers' instructions. Properly prepare and clean all surfaces in accordance with finish manufacturers' requirements prior to commencing painting.
- Wallcovering: Vinyl wall covering to be installed in strict accordance with manufacturer's recommendations. All walls to be smooth and blemish free before installation. Adhesives: Provide manufacturers' recommended Low VOC adhesive, primer, and sealer. Prepare and utilize adhesives per manufacturer's instructions and recommendations.
- LVT & Vinyl Enhanced Tile Flooring: Install as recommended by manufacturer using manufacturers' own Low VOC adhesives and accessories.
- Run all flooring under millwork.
- Window Shades: Fabricator to determine best width to achieve no seams. Provide shades at each individual window.
- Window Film on interior glass: Refer to Architect's drawings for film requirements.

MILLWORK SCHEDULE

LOCATION	CODE	Material	Description
Front Reception Desk- Main Lobby #209	MLK-1	SS-1	Transaction Top Tackboard above 2" backsplash between workcounter & transaction top Workcounter & 2" Backsplash UPPER front panel on visitor side and FULL PANEL on desk side, grain runs vertically. Use matching PVC edgebanding LOWER front panel on visitor side; Use matching PVC edgebanding Vinyl wall base at toe kick to match all walls below PL-2 panel on visitor side Drawer pulls on upper & lower cabinets
Front Reception Desk- Main Lobby #209 Back Unit with Sink	MLK-1B	SS-1	Work Counter/Full ht. Backsplash- Matching Corian Sink, Cameo White color LOWER Base Cabinets & UPPER Cabinets; grain runs vertically
Check In/ Out Desk #246	MLK-2	SS-1	Transaction Top Tackboard above 2" backsplash between workcounter & transaction top Workcounter & 2" Backsplash UPPER front panel on visitor side and FULL PANEL on desk side, grain runs vertically. Use matching PVC edgebanding LOWER front panel on visitor side; Use matching PVC edgebanding Vinyl wall base at toe kick to match all walls below PL-2 panel on visitor side Drawer pulls on upper & lower cabinets
Reception #246- Back Unit	MLK-2B	SS-1	Work Counter/2ht. Backsplash- Tackboard above 2" ht. backsplash between workcounter & transaction top LOWER Base Cabinets & UPPER Cabinets; grain runs vertically. Use matching PVC edgebanding. Including Toe Kick Drawer pulls on upper & lower cabinets
MA Station #250, #210, 233	MLK-3	SS-1	Transaction Top Tackboard above 2" backsplash between workcounter & transaction top Workcounter & 2" Backsplash All built-in file pedestals; grain runs vertically. Use matching PVC edgebanding Drawer pulls on upper & lower cabinets UPPER front panel on visitor side and FULL PANEL on desk side, grain runs vertically. Use matching PVC edgebanding LOWER front panel on visitor side in corridor. Use matching PVC edgebanding Vinyl wall base at toe kick to match all walls below PL-2 panel on visitor side
MA Station #250- Back Unit	MLK-3B	SS-1	Workcounter & 4" Backsplash LOWER Base Cabinets & UPPER Cabinets; grain runs vertically Drawer pulls on upper & lower cabinets
MA Station #233- Back Unit	MLK-3C	SS-1	Workcounter & 4" Backsplash Sinks to be by Corian, Cameo White to match countertops LOWER Base Cabinets & UPPER Cabinets; grain runs vertically Drawer pulls on upper & lower cabinets
ALL LAB ROOMS #252, 232	MLK-4	PL-4	Upper Cabinets; Use matching PVC edgebanding Full height solid surface backsplash on back wall, silicone edge between counter & backsplash Counter & Sink Apron & 4" SIDE WALL backslashes Sinks to be by Corian, Cameo White to match countertops Removable panel @ sink. LOWER base cabinets, grain runs vertically. Use matching PVC edge banding Drawer pulls on upper & lower cabinets Vinyl wall base at toe kick to match all walls below PL-2 panel on visitor side
ALL EXAM ROOMS #254, 256, 257, 259, 260, 261 #219, 220, 221 #226, 227, 228, 230	MLK-5	PL-5	Upper Cabinets; Use matching PVC edgebanding Full height solid surface backsplash on back wall, silicone edge between counter & backsplash Counter & Sink Apron & 4" SIDE WALL backslashes Sinks to be by Corian, Cameo White to match countertops
#235, 236, 238, 240, 241, 242, 243	PL-4	WB-1	Removable panel @ sink. LOWER base cabinets, grain runs vertically. Use matching PVC edge banding Vinyl wall base at toe kick to match all walls below PL-2 panel on visitor side Drawer pulls on upper & lower cabinets
Staff Lounge #216-Kitchen Cabinetry	MLK-6	PL-6	Upper Cabinet only; Use matching PVC Edgebanding Full height solid surface backsplash on back wall, silicone edge between counter & backsplash & 4" SIDE WALL backslashes Counter & Sink Apron. Sink to be undermount stainless steel Sink removable panel, lower base cabinets Entire Refrigerator Enclosure, grain runs vertically Drawer pulls for all cabinet doors- install horizontally Vinyl wall base at toe kick to match all walls
Staff Lounge #216 Lunch Counter	MLK-7	SS-1	Solid Surface LUNCH counter with 4" backsplash End Panels, Vertical p-lam supports
LPN OFFICE #218	MLK-8	PL-1	UPPER Cabinets; Grain runs vertically; Use matching PVC edgebanding Counter & 2" SIDE WALL backslashes Tackboard above 2" backsplash between workcounter & upper cabinets LOWER base cabinets, grain runs vertically; Use matching PVC edge banding & Toe Kick Drawer pulls on upper & lower cabinets
BLOOD DRAW #211	MLK-9	PL-4	UPPER Cabinets; Use matching PVC edgebanding, grain runs vertically Full height solid surface backsplash on back wall, silicone edge between counter & backsplash Counter & Sink Apron & 4" SIDE WALL backslashes Sinks to be by Corian, Cameo White to match countertops Removable panel @ sink. LOWER base cabinets, grain runs vertically. Use matching PVC edge banding Drawer pulls on upper & lower cabinets
STORAGE CABINETS Cordox #C200C	MLK-10	PL-1	Vertical Cabinet Doors & All exposed exterior finishes; Use matching PVC edgebanding, grain runs vertically. Interior to be white melamine, Adjustable Shelves to be P-Lam (PL-2) Toe Kick: PL-1
PROVIDER ROOMS #237, 239	MLK-11	PL-2	UPPER Cabinets; Use matching PVC edgebanding Tackboard above worksurface between workcounter & upper cabinets Counter & 4" SIDE WALL backslashes LOWER base cabinets, grain runs vertically. Use matching PVC edge banding Drawer pulls on upper & lower cabinets
Business Office # 207	MLK-12	SS-1	Work Counter/2ht. Backsplash LOWER Base Cabinets & UPPER Cabinets; grain runs vertically. Use matching PVC edgebanding. Including Toe Kick Drawer pulls on upper & lower cabinets
Business Office # 207	MLK-13	SS-1	Work Counter/2ht. Backsplash- Tackboard above 2" ht. backsplash between workcounter & upper cabinets LOWER Base Cabinets & UPPER Cabinets; grain runs vertically. Use matching PVC edgebanding. Including Toe Kick Drawer pulls on upper & lower cabinets
Business Office # 207	MLK-14	SS-1	Work Counter/2ht. Backsplash- Tackboard above 2" ht. backsplash between workcounter & upper cabinets LOWER Base Cabinets & UPPER Cabinets; Full ht Unit to right of window; grain runs vertically; Use matching PVC edgebanding. Including Toe Kick Drawer pulls on upper & lower cabinets
ALL WINDOW SILLS	PL-2	PL-2	Check with Architect if required.

Montefiore | Nyack

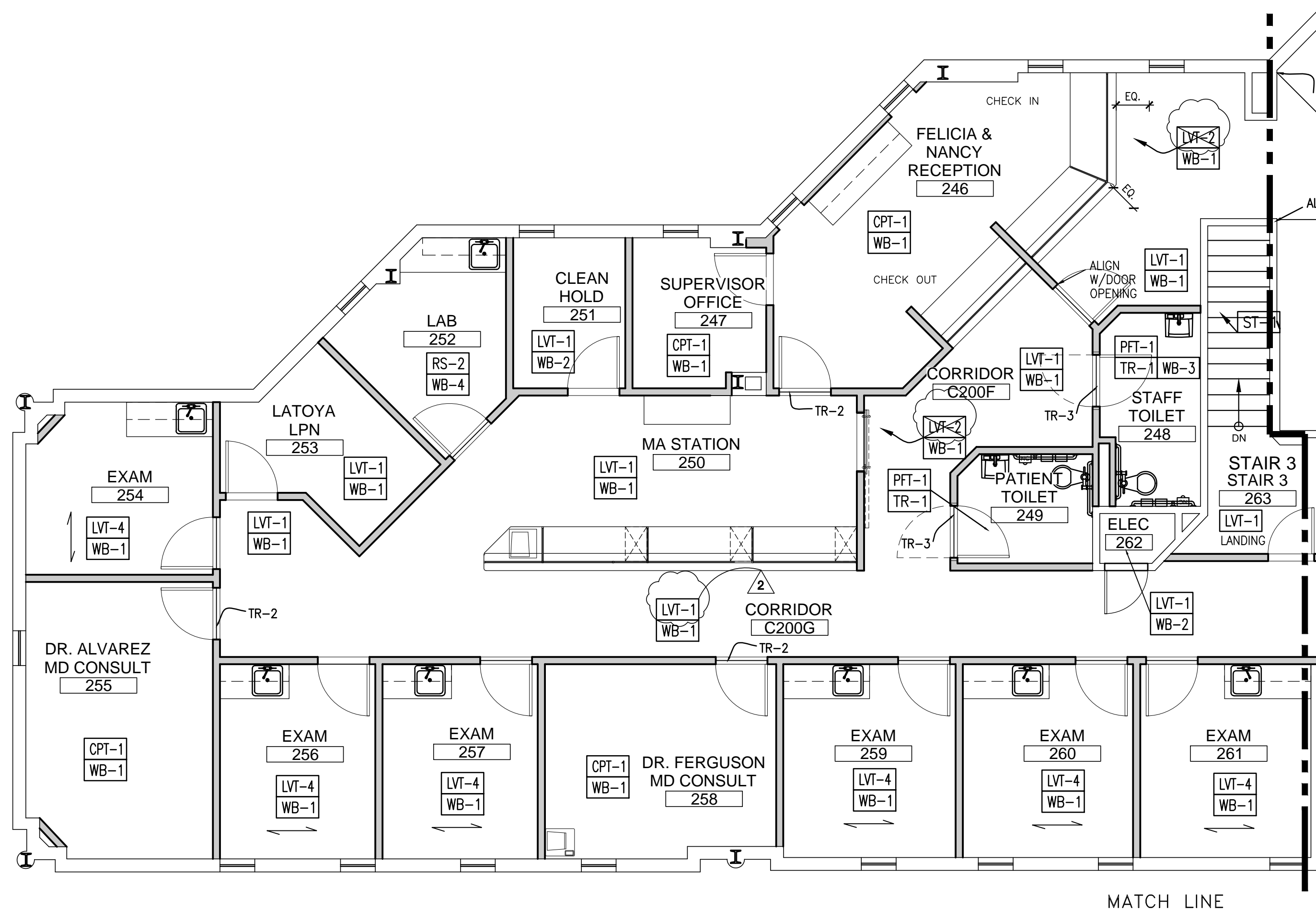
h2 DESIGN STUDIO
P 860.485.0080
F 860.485.0313
P.O. BOX 339
HARTWICK, CT. 06791
WWW.H2DESIGN.COM

FOR CONSTRUCTION

3-14-22 LVT-2 - DELETE
3-1-22 LVT-2 COLOR CHANGE

PROJECT NAME
OUTPATIENT CLINIC
MONTEFIORE HEALTH SYSTEM
350 S. MAIN STREET
BUILDING NAME & ADDRESS
350 S. MAIN STREET
NEW CITY, NY 10956
PROJECT NUMBER

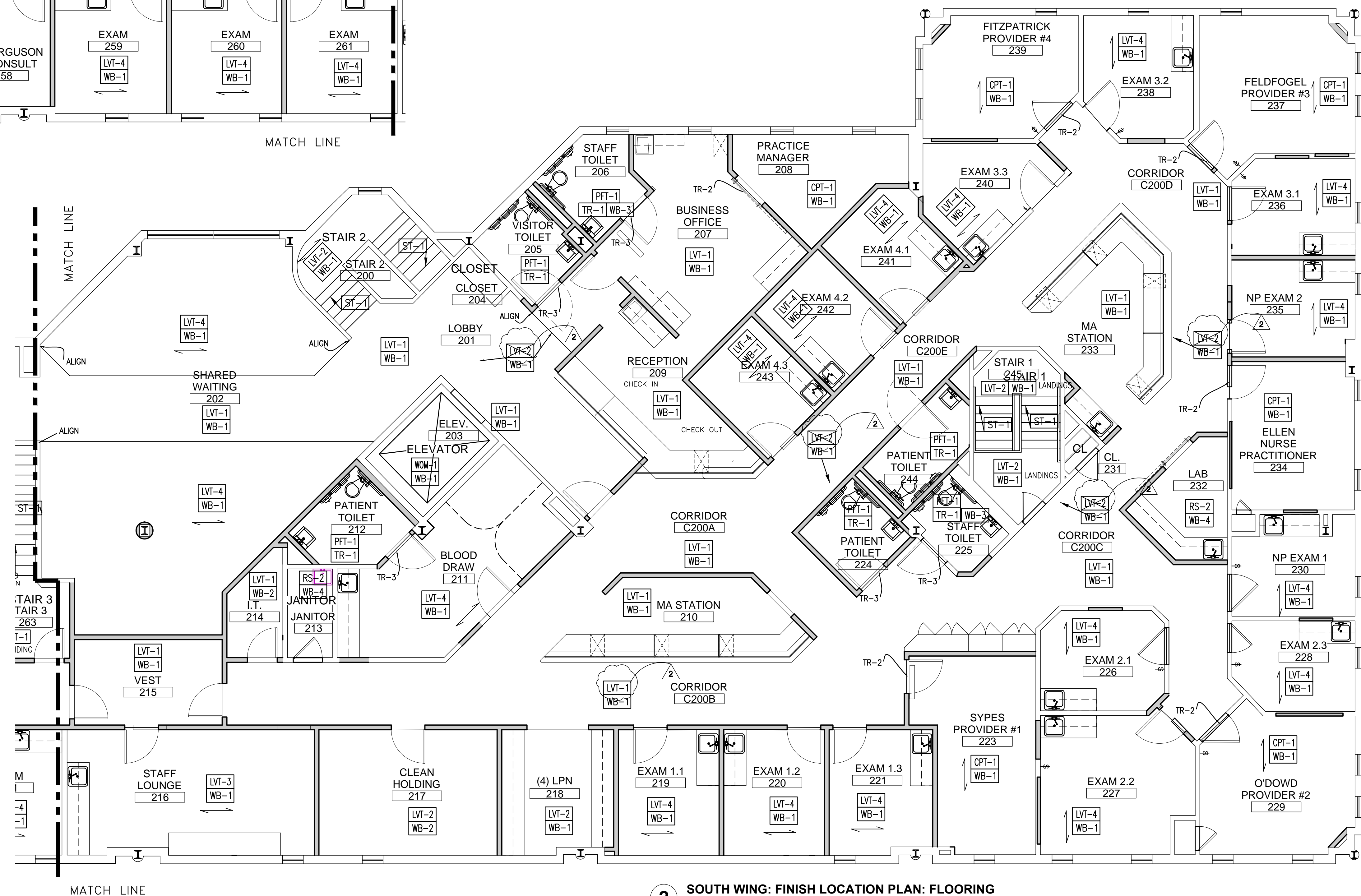
DRAWING TITLE
MATERIAL SCHEDULE/NOTES
MILLWORK SCHEDULE
SCALE
AS NOTED
DATE
M2
2-21-22
DRAWING NUMBER
ID.10.
1 OF 3



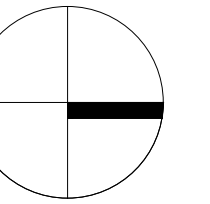
FINISH NOTES: FLOORS

- 1) Transition between porcelain tile and LVT to be a Schultze stainless steel reducer.
- 2) Run all flooring under millwork.

1 NORTH WING: FINISH LOCATION PLAN: FLOORING
3/16"=1'-0"



2 SOUTH WING: FINISH LOCATION PLAN: FLOORING
3/16"=1'-0"



FOR
CONSTRUCTION

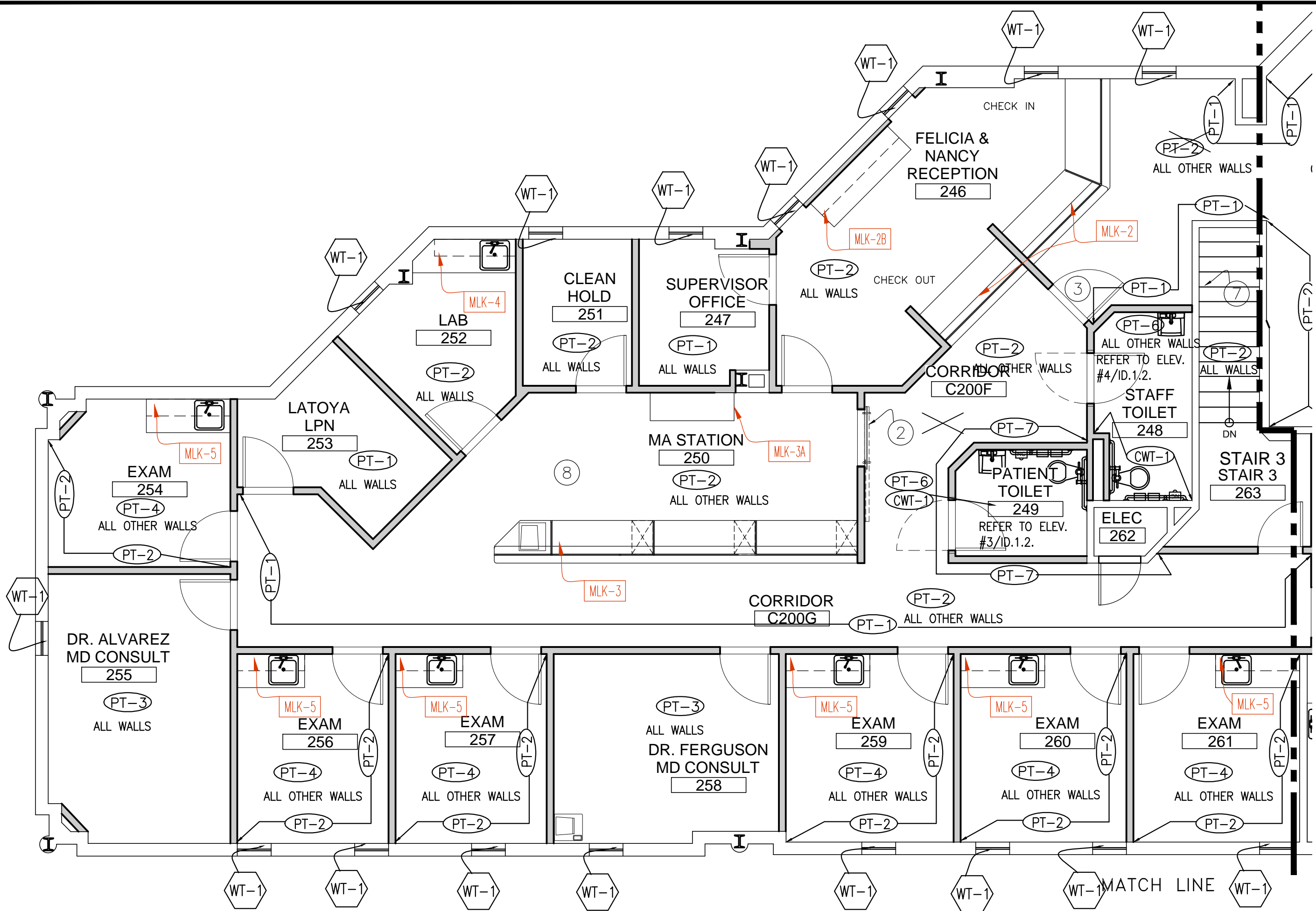
2	3-14-22	LVT-2 - DELETE
1	3-1-22	LVT-2 COLOR CHANGE
NO.	DATE	REVISION
ISSUE/REVISION		

PROJECT NAME	
OUTPATIENT CLINIC	
MONTEFIORE HEALTH	
SYSTEM	
350 S. MAIN STREET	
BUILDING NAME & ADDRESS	
350 S. MAIN STREET	
NEW CITY, NY 10956	
PROJECT NUMBER	

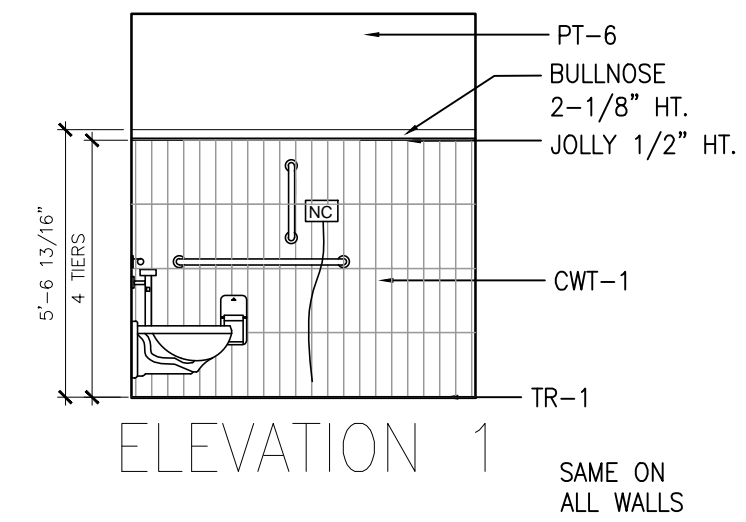
DRAWING TITLE	
FINISH LOCATION PLAN:	
FLOORING/BASE	
SCALE	DRAWN BY
AS NOTED	M2
CAD FILENAME	DATE
	2-21-22
DRAWING NUMBER	

FINISH NOTES: WALLS/PAINTING

- 1) Refer to Sheet ID.1.0. for MATERIAL LIST & MILLWORK SCHEDULE (MLK#).
2) BARN SLIDING DOORS: Wood, stained to match P-lam (PL-1) (Clear walnut finish). Submit sample for approval.
3) SWINGING INTERIOR DOORS: Wood, if all new, provide Clear walnut wood doors throughout suite; Where existing doors are reused, painted with PT-2, EXCEPT DOORS into waiting rooms to be Wood. (Clear walnut finish).
4) DOOR FRAMES Painted with PT-2.
5) All corner guards to be CG-1, refer to Architect's drawings for complete list of locations.
6) Paint Elevator Door Frame & Door with PT-1.
7) Paint Handrails, Balusters, Newel Posts & Stringers with PT-1. If handrails are wood, stain to match PL-1 (Clear walnut finish).
8) Any sheetrock ceilings or soffits to be painted PT-8.

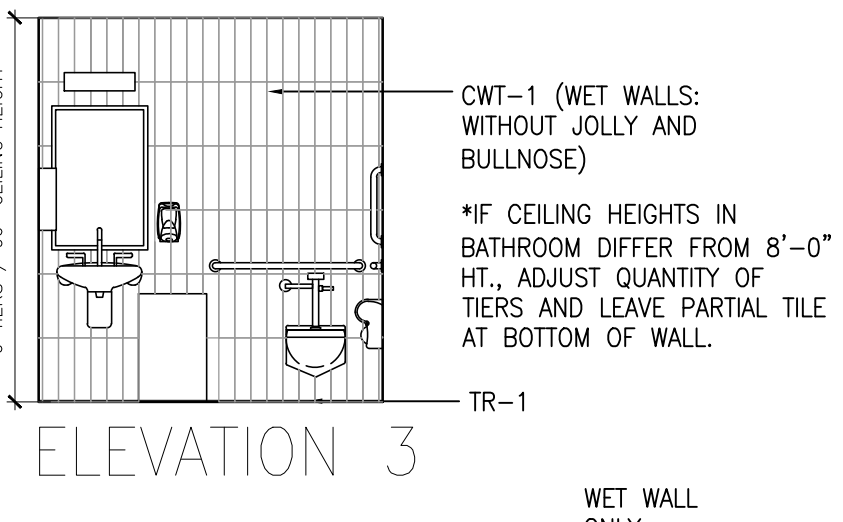


1 NORTH WING: FINISH LOCATION PLAN: WALLS + MILLWORK
3/16"=1'-0"



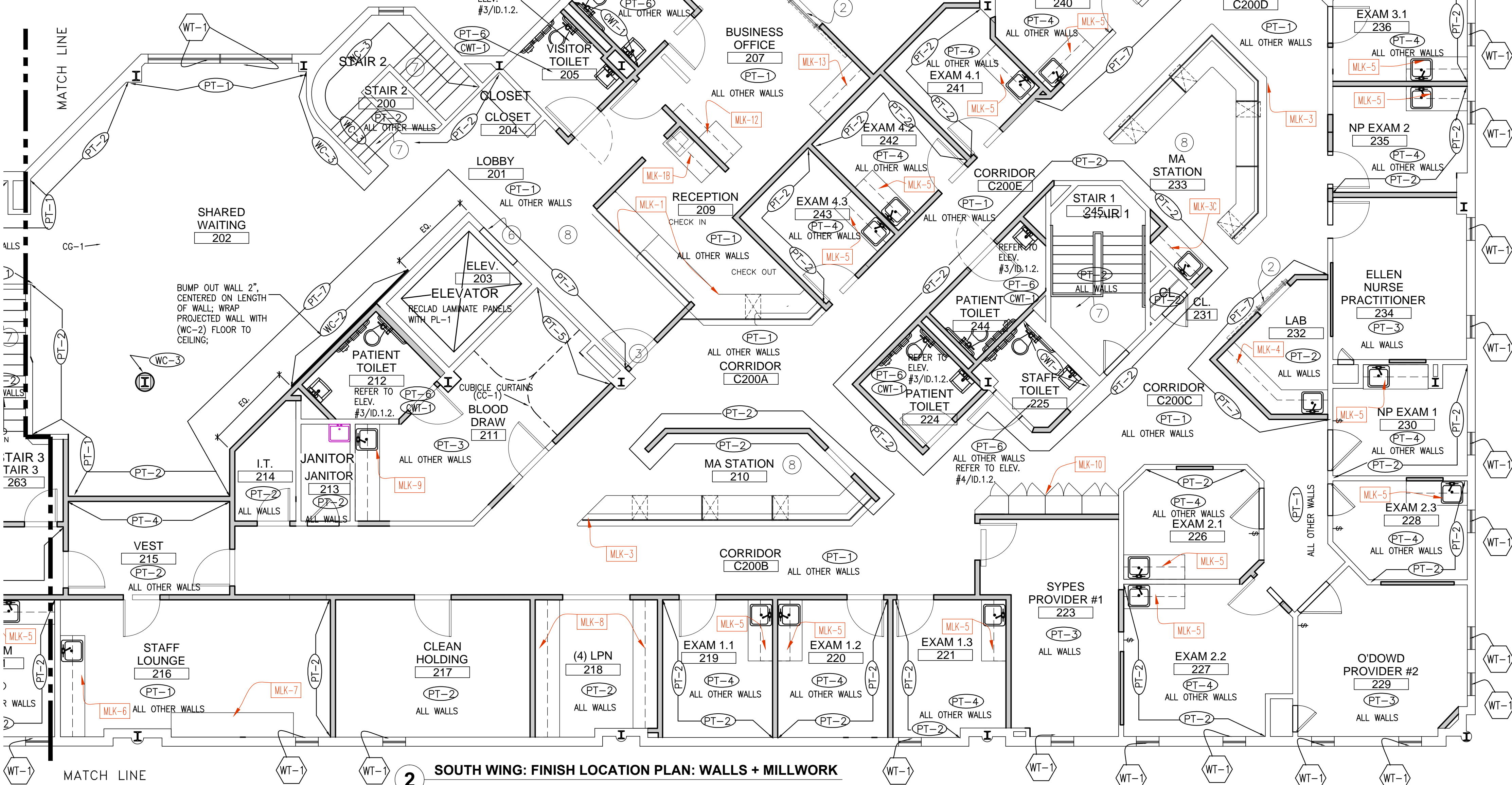
3 TYP. ELEVATIONS FOR PATIENT BATHROOMS

1/4"=1'-0"

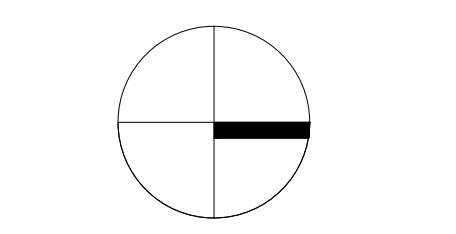


4 TYP. ELEVATIONS FOR STAFF BATHROOMS

1/4"=1'-0"



2 SOUTH WING: FINISH LOCATION PLAN: WALLS + MILLWORK
3/16"=1'-0"



FOR CONSTRUCTION

2	3-14-22	LVT-2 - DELETE
1	3-1-22	LVT-2 COLOR CHANGE
NO.	DATE	REVISION
ISSUE/REVISION		

PROJECT NAME	
OUTPATIENT CLINIC	
MONTEFIORE HEALTH SYSTEM	
350 S. MAIN STREET	
BUILDING NAME & ADDRESS	
350 S. MAIN STREET	
NEW CITY, NY 10956	
PROJECT NUMBER	

DRAWING TITLE	
FINISH LOCATION PLAN	
WALLS + MILLWORK	
SCALE	DRAWN BY
AS NOTED	MZ
CAD FILENAME	DATE
	2-21-22
DRAWING NUMBER	ID.12.
	3 OF 3