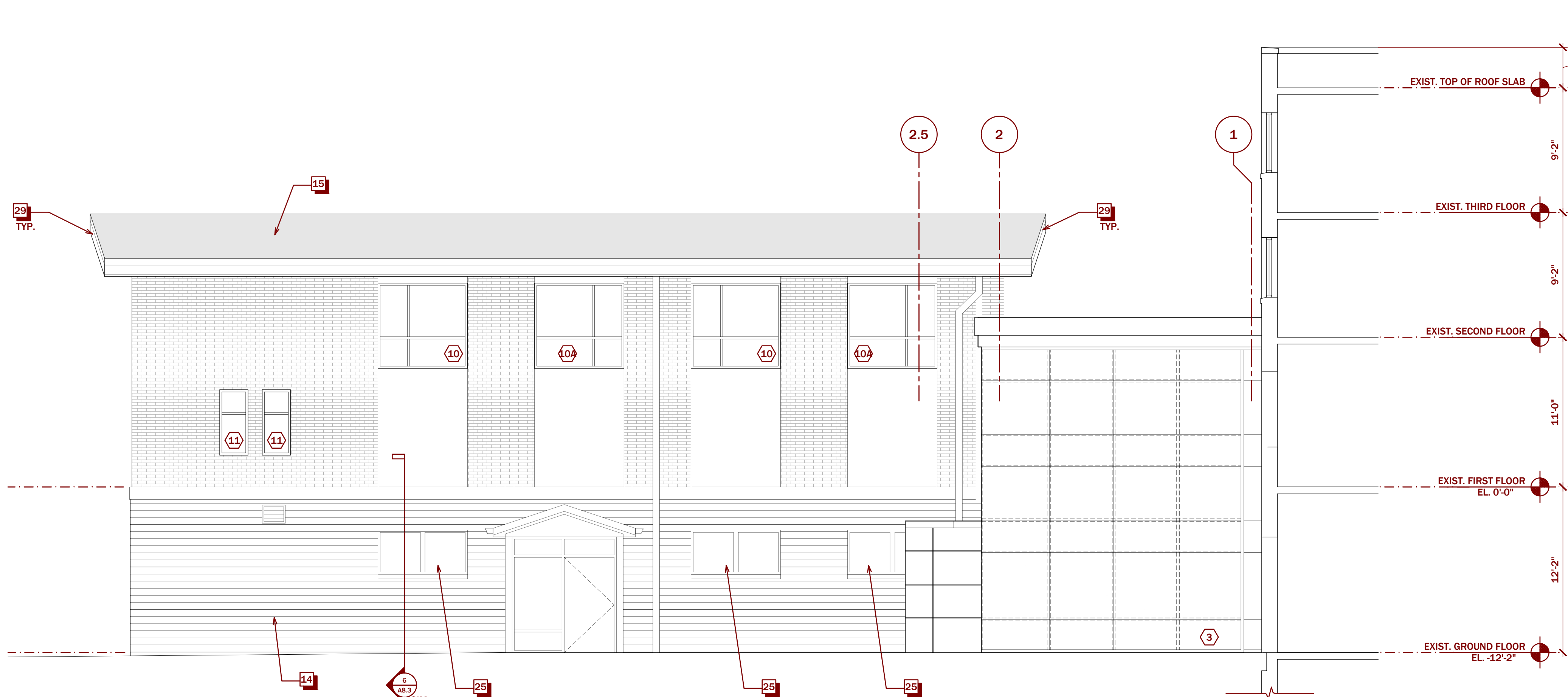
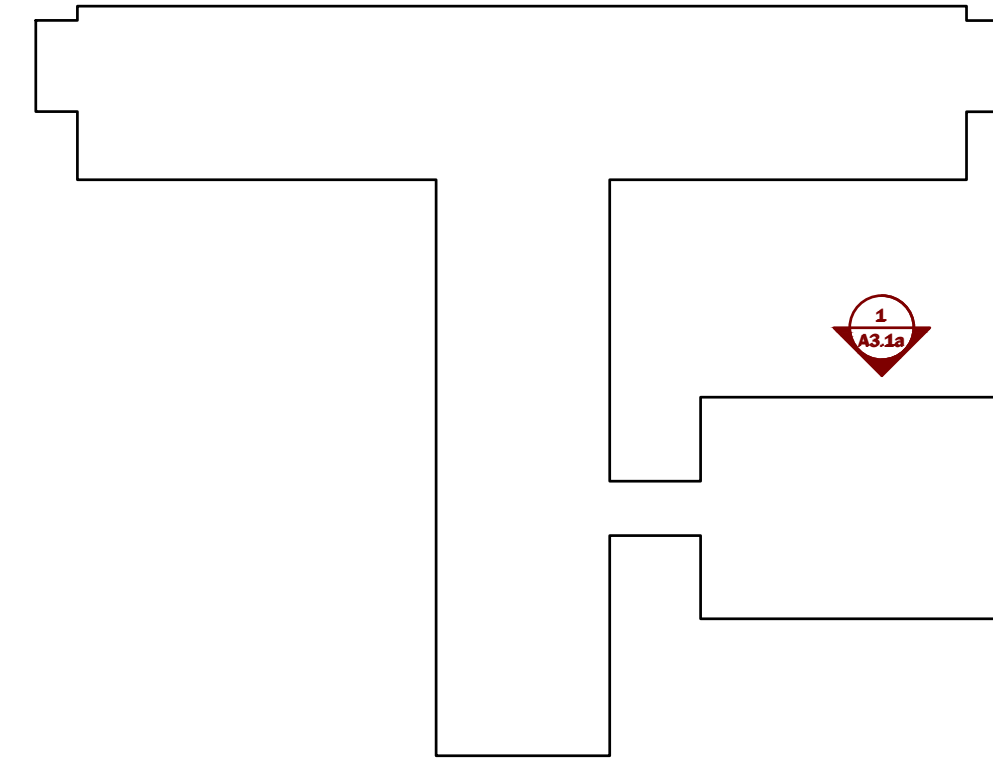




2 NORTH ELEVATION (ALTERNATE)
A3.1 SCALE 3 / 16" = 1' - 0"



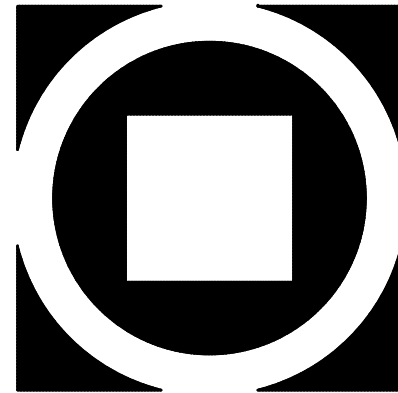
1 PARTIAL WEST ELEVATION (ALTERNATE)
A3.1a SCALE 3 / 16" = 1' - 0"



PROJECT
NORTH

ELEVATION & BUILDING SECTION KEYNOTES

- 1 EXTERIOR ALUMINUM STOREFRONT SYSTEM WITH 1" INSULATING GLAZING AS PER SPECIFICATIONS AND DETAILS. (COLOR: DARK BRONZE)
- 2 EXTERIOR ALUMINUM CURTAINWALL SYSTEM WITH 1" INSULATING GLAZING AS PER SPECIFICATIONS AND DETAILS. (COLOR: DARK BRONZE)
- 3 ALUMINUM RAIN WATER LEADER AS PER DRAWINGS, DETAILS, & SPECS. PROVIDE CAST IRON BOOT WHERE DOWNSPOUT MEETS GRADE (PTD. COLOR BY ARCHITECT)
- 4 FOUNDATION AS PER STRUCTURAL DWGS.
- 5 CONCRETE SLAB AS PER STRUCTURAL DRAWINGS AND DETAILS.
- 6 DOOR AS PER DOOR SCHEDULE & SPECS.
- 7 LIGHT FIXTURE AS PER RCP & ELECTRICAL DRAWINGS.
- 8 LANDSCAPE FEATURE; REFER TO LANDSCAPE AND CIVIL DRAWINGS.
- 9 EXTERIOR CAMERA LOCATION. BOX, WIRING AND TERMINATION AS PER ELECTRICAL DRAWINGS. CAMERA SUPPLIED AND INSTALLED BY OWNER'S VENDOR.
- 10 ALUMINUM COMPOSITE PANEL AS PER DETAILS AND SPECIFICATIONS. BASIS OF DESIGN PRODUCT TO BE LAMINATORS OMEGA - LITE. (COLOR: EXTRA DARK BRONZE)
- 11 ALUMINUM FLASHING AS PER DETAILS AND SPECIFICATIONS
- 12 METAL CANOPY WITH 8" FASCIA AS PER DETAILS AND SPECIFICATIONS
- 13 METAL PANEL INFILL WITH LOUVER, AS PER DETAIL AND SPECIFICATIONS. METAL PANEL BASIS OF DESIGN PRODUCT TO BE LAMINATORS LAMINATORS OMEGA - LITE. COLOR: TBD.
- 14 METAL PANEL INFILL AS PER DETAILS AND SPECIFICATIONS. BASIS OF DESIGN PRODUCT TO BE LAMINATORS LAMINATORS OMEGA - LITE. COLOR: TBD.
- 15 6" COMPOSITE TRIM BY LAMBOO, DIRECT APPLIED, COLOR/FINISH: TBD (ALTERNATE)
- 16 NEW TPO ROOF AS PER SPECIFICATION AND DETAILS (ALTERNATE)
- 17 NEW CONCRETE STAIR WITH GUARDS/ HANDRAILS
- 18 BREAK METAL FASCIA, SEE DET. 8/A8.2 (COLOR BY ARCHITECT)
- 19 ARCHITECTURAL FINISH CONCRETE WALL, SEE SPEC
- 20 ROOF SYSTEM AS PER DETAILS AND SPECIFICATIONS
- 21 STEEL BEAM AS PER STRUCTURAL DRAWINGS
- 22 STEEL COLUMN AS PER STRUCTURAL DRAWINGS, CLAD EXTERIOR COLUMN IN ACM
- 23 HVAC DUCT WORK AS PER MECHANICAL PLANS AND SPECIFICATIONS
- 24 CEILING SYSTEM; REFER TO RCP
- 25 EXISTING TO REMAIN
- 26 EXISTING WINDOW TO REMAIN
- 27 ACM PANEL JOINT LOCATION, SEE DETAILS AND SPECIFICATIONS
- 28 EXISTING WINDOW ON GROUND LEVEL TO BE REPLACED WITH NEW WINDOW TYPE (1) (ALTERNATE)
- 29 CONCRETE PIER, SEE STRUCT. DWGS
- 30 NEW FASCIA AND RAKE EDGE (ALTERNATE)
- 31 GLASS AND ALUMINUM HANDRAIL SYSTEM AS PER SPEC AND DETAILS
- 32 STAIR AS PER SPEC AND DETAILS



KIMMEL BOGRETTE
Architecture + Site

482 Norrisown Road, Suite 200
Blue Bell, PA 19422
Phone: 610.834.7805
Facsimile: 610.834.7815
© COPYRIGHT 2021 KIMMEL BOGRETTE ARCHITECTURE + SITE, INC. ALL RIGHTS RESERVED

MOUNT SAINT MARY COLLEGE, GUZMAN HALL
COMMUNITY WELLNESS CENTER

330 POWELL AVE.
NEWBURGH, NY 12550

Bid Issue Date:
8/9/2021
Drawn By:
SLJ/MSP
Checked By:
JHL/LG
Scale:

Sheet Name:	BUILDING ELEVATIONS	
	(ALTERNATE)	Revisions:
Progress Prints:		Δ
		Δ
		Δ
		Δ

A3.1a