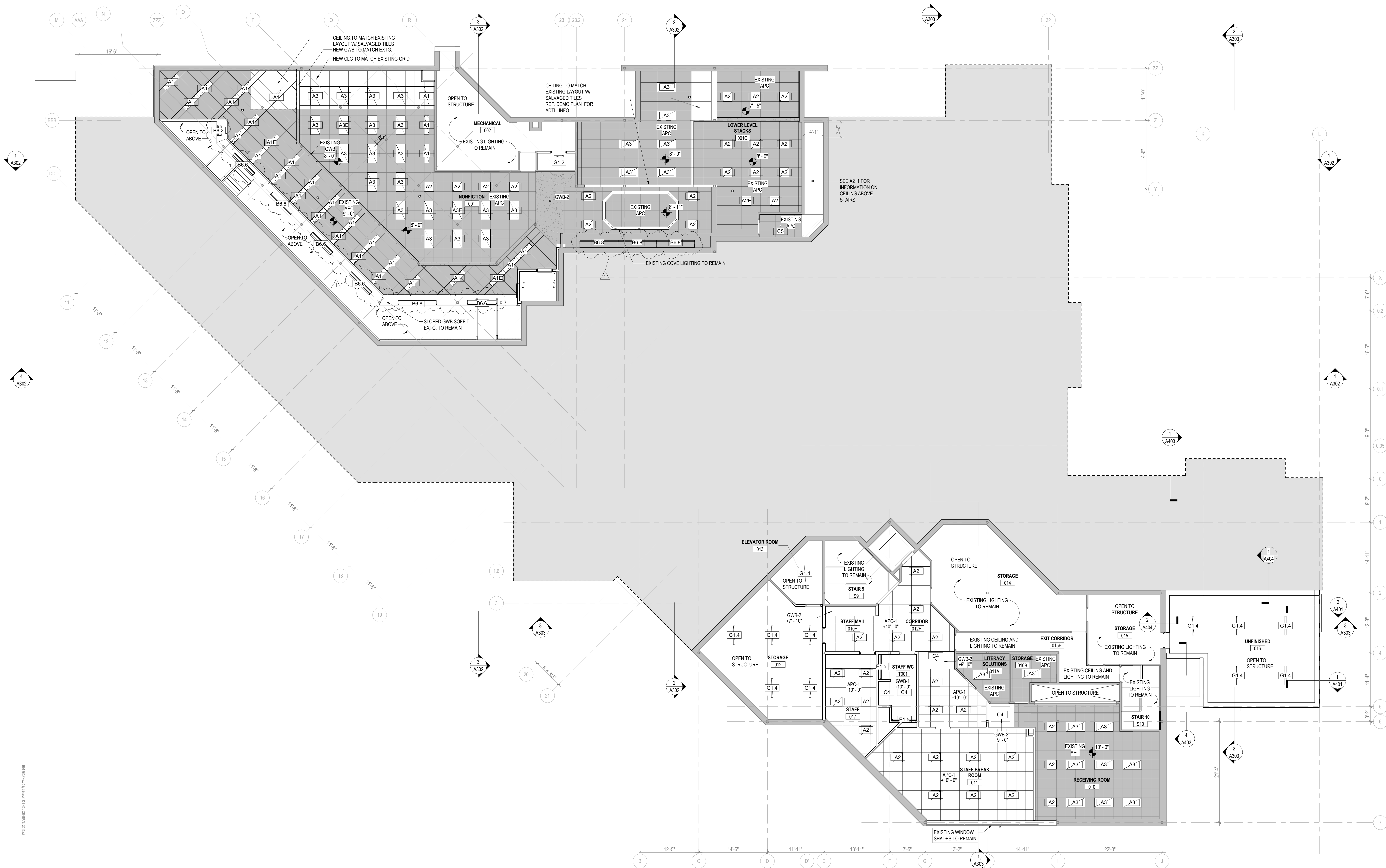


| ISSUES AND REVISIONS | | |
|----------------------|-----------------------------|------------|
| NO. | SUBMITTAL | DATE |
| 1 | 100% CONSTRUCTION DOCUMENTS | 01.14.2022 |
| 1 | ADDENDUM 1 | 02.01.2022 |

REFLECTED CEILING
PLAN - LOWER LEVEL &
BASEMENT



1 RCP LOWER LEVELS
1/8" = 1'-0"

REFLECTED CEILING PLAN
GENERAL NOTES

- CEILING HEIGHTS ARE MEASURED FROM FINISHED FLOOR.
- REFER TO REFLECTED CEILING PLANS FOR GRID LAYOUTS AND FIXTURE LOCATIONS & COORDINATE WITH MEP. IN CASE OF CONFLICT, CONSULT ARCHITECT. SEE ELECTRICAL FOR SPECIFIC LIGHT FIXTURE TYPE DESIGNATION.
- PAINT ALL STRUCTURE AND INFRASTRUCTURE COMPONENTS AND SURFACES AT OPEN OR EXPOSED CEILINGS.
- SPRINKLERS, WHERE SHOWN, INDICATE PREFERRED RELATIONSHIP TO ADJACENT BUILDING ELEMENTS ONLY. ALL SPRINKLER PIPING IS TO BE CONCEALED IN WALL OR CEILING CAVITIES. CONSULT WITH ARCHITECT ON CONFLICTS.
- ALL SUSPENDED ACOUSTICAL TILE CEILINGS SHALL BE CENTERED IN EACH ROOM PER THE REFLECTED CEILING PLAN U.N.O.
- CENTER SPRINKLER HEADS, MECHANICAL AIR DEVICES, LIGHT FIXTURES AND OTHER ELECTRICAL DEVICES IN ACOUSTICAL CEILING PANELS, U.N.O.
- LOCATE M.E.P. COMPONENTS REQUIRING ACCESS AT ACCESSIBLE CEILING AREAS TO THE GREATEST EXTENT POSSIBLE. WHERE CEILINGS ARE INACCESSIBLE, PROVIDE ACCESS PANELS.
- SOME M.E.P. COMPONENTS, ELECTRICAL DEVICES AND PLUMBING DEVICES MAY NOT BE SHOWN. REFER TO M.E.P. DRAWINGS.
- PROVIDE VERTICAL GYP. BD. AT ALL CEILING HEIGHT TRANSITIONS, U.N.O.

LEGEND - CEILING TYPE

| | | | | | |
|--|--------|--------------------------------------|--|--------|---|
| | GWB-01 | 5/8" GYP. BOARD ON SUSPENSION SYSTEM | | SDG-01 | SUSPENDED LINEAR WOOD CEILING |
| | GWB-02 | 5/8" GYP. BOARD ON STRUCTURE | | WD-01 | WOOD PANEL CEILING |
| | APC-01 | 2' x 2' ACOUSTIC PANEL CEILING | | | EXISTING ACOUSTIC PANEL CEILING TO REMAIN WHERE INDICATED VARIOUS SIZES |
| | APC-02 | 2' x 4' ACOUSTIC PANEL CEILING | | | |
| | APC-03 | SUSPENDED BAFFLE CEILING | | | |