

SYMBOLS LIST

	KEYED NOTE		2'x4' (NOMINAL) LIGHTING FIXTURE -TYPE 'BB' UON
	ELECTRICAL PANELBOARD SURFACE MOUNTED		2'x4' (NOMINAL) LIGHTING FIXTURE WITH INTEGRAL EMERGENCY BATTERY PACK -TYPE 'BBE' UON
	ELECTRICAL PANELBOARD FLUSH MOUNTED		2'x2' (NOMINAL) LIGHTING FIXTURE-TYPE 'BA' UON
	DISCONNECT SWITCH. 3 POLE, 60 AMPS, WP U.O.N.		2'x2' (NOMINAL) EMERGENCY LIGHT FIXTURE WITH INTEGRAL EMERGENCY BATTERY PACK -TYPE 'BAE' UON
	FUSED DISCONNECT SWITCH		RECESSED DOWN LIGHT
	MOTOR/HVAC/HWH/FURNACE/FAN. CIRCUIT VIA STARTERS/CONTROLLERS/DRIVES ETC. SEE MECHANICAL PLANS FOR ADDITIONAL INFORMATION.		WALL MOUNTED LIGHT FIXTURE WITH INTEGRAL EMERGENCY BATTERY PACK -TYPE 'T' UON
	PANELBOARD (ONE-LINE)		1'x4' (NOMINAL) LIGHTING FIXTURE. TYPE T WITH PENDANT MOUNT UON.
	SPD SURGE PROTECTION DEVICE-JO5LYN SURGITRON II 1455-49		ANTIMICROBIAL DECORA SERIES SPOT (3 WAY) 120-277 VAC SPECIFICATION GRADE SWITCH
	METER		ANTIMICROBIAL DECORA SERIES SPST 120-277 VAC SPECIFICATION GRADE SWITCH
	METERING CURRENT TRANSFORMERS AND POTENTIAL CT'S/TAPS AS APPLICABLE.		ANTIMICROBIAL DECORA SERIES SPST 120-277 VAC SPECIFICATION GRADE SWITCH ILLUMINATED WHEN ON LEVITON SERIES 5628.
	CIRCUIT TAG		THERMAL SWITCH
	CIRCUIT BREAKER - 3 POLE UON. 'SIT' INDICATES WITH SHUNT TRIP COIL.		LOW VOLTAGE SPECIFICATION GRADE NETWORKED DIGITAL SWITCH. WAIT STOPPER. NUMBER OF BUTTONS TO PROVIDE SWITCH LEGS AS DESIGNATED BY SUBLETTERS AND/OR NUMBER IN PARENTHESIS. SUB LETTER DESIGNATED WITH A HYPHEN REPRESENTS ONE BUTTON PROGRAMMED TO CONTROL SEVERAL SWITCH LEGS/GROUPS.
	CIRCUIT BREAKER - 3 POLE UON		BATHROOM FAN/LIGHT SWITCH WITH DELAY TIMERS AND VENTILATION TIMER. AIRCYCLER SMART EXHAUST SE1 (TOGGLE) SED-S (DECORA).
	FUSED DISCONNECT (ONE-LINE)		LOW VOLTAGE LIGHTING CONTROL SWITCH DIGITAL VACUANCY SENSOR/WALL SWITCH WITH ON/OFF AND DIMMER. WAIT STOPPER LMPW-101+.
	GROUND		CONVENTIONAL HARD WIRED ULTRASONIC OCCUPANCY SENSOR. WAIT STOPPER.
	SINGLE POLE HOME-RUN TO PANEL AND CIRCUIT AS INDICATED. 2#12 1#12G-3/4"-20A OCPD UON		CONVENTIONAL HARD WIRED ULTRASONIC OCCUPANCY SENSOR. WAIT STOPPER.
	HOMERUN TO PANEL BOARD AS INDICATED. QUANTITY OF ARROWHEADS INDICATE THE NUMBER OF SINGLE POLE CIRCUITS. EACH CIRCUIT WITH DEDICATED NEUTRAL.		POWER SUPPLY 'u' (DESIGNATION WIRES) FOR LED LIGHTING. PROVIDE IN NEMA 1 ENCLOSURE. PROVIDE CONCEALED LOW VOLTAGE CIRCUITRY TO LED.
	MULTIPOLE HOMERUN TO PANELBOARD AS INDICATED.		EMERGENCY CALL ANNUNCIATOR/CONTROLLER/SYSTEM WITH AUDIO AND VISUAL INDICATING OF EMERGENCY CALL STATION ACTIVATION. CIRCUIT TO ORIGINAL CIRCUIT.
	CEILING MOUNTED CARBON MONOXIDE DETECTOR. PROGRAM FOR SUPERSUPPLY ANNUNCIATION		EMERGENCY CALL ELECTRIC STRIKE RELEASE. CIRCUIT TO RELEASE DOOR ON ACTIVATION OF EMERGENCY CALL STATION ACTIVATION.
	DUCT MOUNTED SMOKE DETECTOR WITH PILOT SAMPLING TUBE, HOUSING, HEATER AND WEATHER ENCLOSURE. PROVIDE REMOTE STATION. INTELLIGENT MONITOR MODULE		IN TOILETS: EMERGENCY CALL PULL STATION WITH PULL CORD. INTERCONNECT WITH SYSTEM. CIRCUIT TO ACTIVATE ASSOCIATED AUDIO-VISUAL ANNUNCIATING DEVICE. PROVIDE COMPLETE SYSTEM AND POWER SUPPLY.
	ADDRESSABLE OPEN AREA CEILING MOUNTED SMOKE DETECTOR.		SURFACE MOUNTED CAMERA. POWERED OVER ETHERNET (POE). PROVIDE WITH CAT6A CABLE IN RACEWAY BACK TO THE NEAREST IT/DATA CLOSET/ROOM
	ADDRESSABLE BEAM TYPE SMOKE DETECTOR.		CHARGING STATION FOR ELECTRIC VEHICLES. DUAL STATION TO ACCOMMODATE 2 VEHICLES. LEVITON EVR-GREEN 4000 LEVEL 2 STATION. #CH4U2-CBMX-CPCAP-B-CPCBX-CPCOM-CPWY3-CPVAL
	MANUAL PULL STATION		ADJUSTABLE FREQUENCY DRIVE. SEE MECHANICAL DOCUMENTS FOR ADDITIONAL INFORMATION.
	AUDIO/VISUAL INDICATING APPLIANCE. (FIRE-ALARM)		MOTOR CONTROLLER/STARTER. SEE MECHANICAL DOCUMENTS FOR ADDITIONAL INFORMATION.
	VISUAL INDICATING APPLIANCE.		WALL MOUNTED LIGHT FIXTURE. CIRCUITRY/FIXTURE TYPE AS INDICATED. WHERE NO TYPE IS INDICATED PROVIDE TYPE 'X' WITH BATTERY BACKUP.
	FIRE ALARM SUPERVISED EXTENDED POWER SUPPLY WITH AUDIO/VISUAL APPLIANCE CIRCUIT(S).		TRACK LIGHTING WITH ALL ASSOCIATED FITTINGS AND PLATES. TRACK LENGTH PER PLANS HEADS AS INDICATED.
	FIRE ALARM CONTROL PANEL (FACP).		ADDRESSABLE OPEN AREA CEILING MOUNTED SMOKE DETECTOR PROVIDED FOR ELEVATOR RECALL.
	FIRE ALARM 2 LINE LIQUID CRYSTAL ANNUNCIATOR.		
	PC DESKTOP COMPUTER FOR SPECIFIC SYSTEM (FIRE ALARM, ACCESS CONTROL, ETC...) COMPLETE WITH ALL CONNECTIONS, SOFTWARE AND PROGRAMMING.		
	JACK/OUTLET FOR IT/DATA/TELEPHONE. PROVIDE RECESSED CONCEALED DEPT 1800 BOX, PASTER RING, 1" EMPTY RACEWAY UP INTO ACCESSIBLE CEILING. PROVIDE (2)R4S TELEPHONE AND (2) R4S COMPUTER JACKS EACH WITH COLOR CODED CAT 6A CABLE TERMINATED AND PATCHED IN THE NEAREST IT CLOSET.		
	JACK/OUTLET FOR IT/DATA/TELEPHONE IN MODULAR FURNITURE. PROVIDE AS INDICATED FOR OPEN TRIANGLE SYMBOL. EXCEPT EXTENDED INTO THE MODULAR FURNITURE.		
	JACK/OUTLET FOR IT/DATA/TELEPHONE. PROVIDE AS INDICATED FOR OPEN TRIANGLE SYMBOL. EXCEPT AT NON-STANDARD MOUNTING HEIGHT		
	IT/DATA OUTLET/JACK R4S WITH CAT 6A CABLE IN ACCESSIBLE CEILING GWTY FOR POE WFI JACKS POINT. EMERGENCY POWER OFF (EPO). SLEEVED PUSH BUTTON. CLEAR FLIP COVER.		
	WALL COAX JACK FOR TELEVISION. WITH 1" EMPTY RACEWAY UP INTO ACCESSIBLE CEILING GWTY.		
	FIRE ALARM REMOTE INDICATOR STATION. ILLUMINATES WHEN ASSOCIATED (USUALLY CONCEALED) DEVICE IS ACTIVATED.		
	DOOR IDENTIFIER. SEE SECURITY/ACCESS CONTROL DETAILS AND ARCHITECTURAL DRAWINGS/SCHEDULES FOR ADDITIONAL INFORMATION		
	CONCEALED MORTISE SWITCHES IN THE HEAD OF THE DOOR/LAMB (LATCH SIDE) AND IN THE ELECTRIC HINGE HARDWARE.		
	ELECTRIFIED MORTISE LOCK/LATCH SET AND ASSOCIATED ELECTRIC HINGE HARDWARE. PROVIDE CONCEALED THRU WIRING IN DOOR THROUGH TO HINGE. PROVIDE MORTISE SHIELD BOX WITH RACEWAY UP FRAME/WALL TO SYSTEM.		
	ELECTRIC STRIKE RELEASE. PROVIDE MORTISE SHIELD WITH CONCEALED WIRING UP FRAME/WALL (IN RACEWAY) TO ACCESS CONTROL SYSTEM.		
	ACCESS CONTROL READER.		
	ELECTRIC HINGE WITH CONCEALED MORTISE CONTACT AND WIRING THROUGH THE DOOR LEAF TO DML OR STRIKE COMPONENT(S).		
	DOORCHIME/BUZZER WITH ASSOCIATED CONTROL. POWER TRANSFORMER. CIRCUIT TO ACTIVATE ON OPERATION OF THE ASSOCIATED PUSHBUTTON		
	PUSHBUTTON. CIRCUIT TO ACTIVATE ASSOCIATED DOORCHIME/BUZZER.		

ANY OF THESE SYMBOLS CONSTITUTES NEW WORK PROVIDED UNDER THIS CONTRACT, UNLESS OTHERWISE NOTED. SYMBOLS SHOWN IN (LIGHT CONTINUOUS) LINETYPE ARE EXISTING DEVICES. SYMBOLS SHOWN IN (DASHED) LINETYPE ARE TO BE REMOVED. ALL OTHER SYMBOLS, INCLUDING SYMBOLS SHOWN IN (SOLID HEAVIER) LINETYPES ARE NEW. SYMBOLS INDICATED WITH (CR) ARE EXISTING TO BE RELOCATED. SYMBOLS INDICATED WITH (RE) ARE RELOCATED EXISTING IN THE NEW LOCATION. SYMBOLS WITH AN NUMBER IN PARENTHESIS DENOTES MULTIPLE QUANTITIES OF THAT SYMBOL.

IN CERTAIN CASES SYMBOLS FOR NEW WORK MAY BE INDICATED IN LIGHTER LINETYPES TO EMPHASIZE OTHER WORK ASSOCIATED WITH THAT WORK. IF WORK IS INDICATED ANYWHERE AS NEW IT IS TO BE PROVIDED.

* ADJUST CATALOG NUMBER TO ACCOMMODATE THE NUMBER OF BUTTONS, ROUNDED UP TO EQUAL OR EXCEED THE NUMBER OF CONTROL SUBLETTERS OR NUMBER IN PARENTHESIS.

ABBREVIATIONS

ABBREVIATION	DESCRIPTION	ABBREVIATION	DESCRIPTION
A	AMPERE	ACT	JUNCTION
ACCU	AIR COOLED CONDENSING UNIT ABOVE FINISHED FLOOR	KMIL	THOUSAND CIRCULAR MILS
AFF	AMPERE INTERRUPTING CAPACITY	KVA	KILOVOLT-AMPERE
AIC	ANNUNCIATOR	KW	KILOWATT
ANN	AMERICAN WIRE GAUGE	L	LIGHTING
BKR	BREAKER	LT(S)	LIGHT(S)
CB	CIRCUIT BREAKER	MCB	MAIN CIRCUIT BREAKER
CC	COMBATED COLOR TEMPERATURE	MCM	THOUSAND CIRCULAR MILS
COL	COLUMN	MIN	MINIMUM
DET	DETECTOR	MLO	MAIN LUGS ONLY
DWG	DRAWING	MTR	MOUNTED
EF	EXHAUST FAN	N	NIGHT LIGHT
ELEC	ELECTRICAL	NEC	NATIONAL ELECTRIC CODE
EMER	EMERGENCY	NO	NORMALLY OPEN
EML	ELECTRIC MORTISE LOCK	OC	OVER COUNTER
EMT	ELECTRICAL METALLIC TUBING	OC'D	OVERCURRENT PROTECTIVE DEVICE
ESR	ELECTRIC STRIKE RELEASE	P	POLE(S)
(E), EX	EXISTING	PNL	PANEL
EXT	EXTERIOR	PPE	POINT OF ENTRY
FA	FIRE ALARM	PWR	POWER
FACP	FIRE ALARM CONTROL PANEL	Φ	PHASE
FL	FLOOR, FLUORESCENT	R	REMOVE
FBO	FURNISHED BY ANOTHER DIVISION, WIRED BY THIS DIVISION	RP	RECEPTACLE PANEL
FIBO	FURNISHED AND INSTALLED BY ANOTHER DIVISION, WIRED BY THIS DIVISION	RM	RECEPTACLE ROOM
FLA	FULL LOAD AMPERES	SCH	SCHEDULE
FLR, FL	FLOOR, FLUORESCENT	SPD	SURGE PROTECTION DEVICE
FUT	FUTURE	STA	STATION
FURN	FURNITURE	SUSP	SUSPENDED
G, GND	GROUND	SW	SWITCH
OFF	GAS FIRED FURNACE	SWB	SWITCHBOARD
GFI	GROUND FAULT CIRCUIT INTERRUPTER	T, TEL, TELE	TELEPHONE
GFP	GROUND FAULT PROTECTION	TEMP	TEMPORARY
HP	HORSEPOWER, HEAT PUMP	TV	TELEVISION
HTR	HEATER	UON	UNLESS OTHERWISE NOTED
HWH	HOT WATER HEATER	VF	VERIFY IN FIELD
IBC	INTERNATIONAL BUILDING CODE	W	WIRE
JB	JUNCTION BOX	WH	WATER HEATER
J-BOX	JUNCTION BOX	WP	WEATHERPROOF
		WG	WIRE GUARD
		WTRM	TRANSFORMER

STATIONARY ELECTRIC GENERATOR.

PORTABLE TRAILER MOUNTED ELECTRIC GENERATOR.

UTILITY POLE

TRANSFORMER

AUTOMATIC TRANSFER SWITCH.

LIGHTNING PROTECTION AIR TERMINAL AND ASSOCIATED COMPONENTS.

GROUNDING/BONDING CONNECTION. CADDWED UON.

GROUND ROD. COPPER CLAD 5/8" 10' LONG UON.

COPPER GROUND BAR.

WIRE MANAGEMENT TRAY SYSTEM. SNAKE TRAY.

CAT 6A ETHERNET (LAN) PATCH CORD WITH R4S TERMINATED ENDS. RED OUTER JACKET. PROVIDE FOR INTERCONNECTIONS BETWEEN LIGHTING CONTROL DEVICES. RUN CONCEALED. WHERE EXPOSED (NO CEILING, MECHANICAL ROOMS, OUTDOORS) PROVIDE IN RACEWAY. PROGRAM SYSTEM TO CONTROL(S) AS DESIGNATED BY SUB-LETTERS ON THE DOCUMENTS.

CONVENTIONAL HARD WIRED LIGHTING CONTROL SWITCH/VACUANCY SENSOR/WALL SWITCH.

CONVENTIONAL HARD WIRED ULTRASONIC OCCUPANCY SENSOR. WAIT STOPPER.

POWER SUPPLY 'u' (DESIGNATION WIRES) FOR LED LIGHTING. PROVIDE IN NEMA 1 ENCLOSURE. PROVIDE CONCEALED LOW VOLTAGE CIRCUITRY TO LED.

EMERGENCY CALL ANNUNCIATOR/CONTROLLER/SYSTEM WITH AUDIO AND VISUAL INDICATING OF EMERGENCY CALL STATION ACTIVATION. CIRCUIT TO ORIGINAL CIRCUIT.

EMERGENCY CALL ELECTRIC STRIKE RELEASE. CIRCUIT TO RELEASE DOOR ON ACTIVATION OF EMERGENCY CALL STATION ACTIVATION.

IN TOILETS: EMERGENCY CALL PULL STATION WITH PULL CORD. INTERCONNECT WITH SYSTEM. CIRCUIT TO ACTIVATE ASSOCIATED AUDIO-VISUAL ANNUNCIATING DEVICE. PROVIDE COMPLETE SYSTEM AND POWER SUPPLY.

SURFACE MOUNTED CAMERA. POWERED OVER ETHERNET (POE). PROVIDE WITH CAT6A CABLE IN RACEWAY BACK TO THE NEAREST IT/DATA CLOSET/ROOM

CHARGING STATION FOR ELECTRIC VEHICLES. DUAL STATION TO ACCOMMODATE 2 VEHICLES. LEVITON EVR-GREEN 4000 LEVEL 2 STATION. #CH4U2-CBMX-CPCAP-B-CPCBX-CPCOM-CPWY3-CPVAL

ADJUSTABLE FREQUENCY DRIVE. SEE MECHANICAL DOCUMENTS FOR ADDITIONAL INFORMATION.

MOTOR CONTROLLER/STARTER. SEE MECHANICAL DOCUMENTS FOR ADDITIONAL INFORMATION.

WALL MOUNTED LIGHT FIXTURE. CIRCUITRY/FIXTURE TYPE AS INDICATED. WHERE NO TYPE IS INDICATED PROVIDE TYPE 'X' WITH BATTERY BACKUP.

TRACK LIGHTING WITH ALL ASSOCIATED FITTINGS AND PLATES. TRACK LENGTH PER PLANS HEADS AS INDICATED.

ADDRESSABLE OPEN AREA CEILING MOUNTED SMOKE DETECTOR PROVIDED FOR ELEVATOR RECALL.

PROVIDE ALL ELECTRICAL WIRING DEVICES AS DECORA STYLE DEVICES

LIST OF ELECTRICAL DRAWINGS.

E-001	ELECTRICAL SYMBOLS LIST, LIGHTING FIXTURE SCHEDULE AND ABBREVIATIONS.
E-030	BASEMENT LEVEL 01 PART PLANS ALTERNATE 01
E-031	LEVEL 01 PART PLANS ALTERNATE 01
E-101	ELECTRICAL BASEMENT LEVEL FLOOR PLAN (REMOVALS).
E-102	ELECTRICAL LEVEL 01 PLAN (REMOVALS).
E-103	EXISTING ROOF PLAN (REMOVALS).
E-201	ELECTRICAL SITE PLAN.
E-202	ELECTRICAL BASEMENT LEVEL FLOOR PLAN (POWER).
E-203	ELECTRICAL BASEMENT LEVEL FLOOR PLAN (LIGHTING).
E-204	ELECTRICAL BASEMENT LEVEL FLOOR PLAN (LIGHTING).
E-205	ELECTRICAL BASEMENT LEVEL FLOOR PLAN (LIGHTING).
E-206	ELECTRICAL BASEMENT LEVEL FLOOR PLAN (FIRE ALARM).
E-207	ELECTRICAL LEVEL 01 FLOOR PLAN (POWER).
E-208	ELECTRICAL LEVEL 01 FLOOR PLAN (LIGHTING).
E-209	ELECTRICAL LEVEL 01 FLOOR PLAN (LIGHTING).
E-210	ELECTRICAL LEVEL 01 FLOOR PLAN (LIGHTING).
E-211	ELECTRICAL LEVEL 01 FLOOR PLAN (FIRE ALARM).
E-212	ELECTRICAL LEVEL 02 FLOOR PLAN (POWER).
E-213	ELECTRICAL LEVEL 02 FLOOR PLAN (LIGHTING).
E-214	ELECTRICAL LEVEL 02 FLOOR PLAN (LIGHTING).
E-215	ELECTRICAL LEVEL 02 FLOOR PLAN (LIGHTING).
E-216	ELECTRICAL LEVEL 02 FLOOR PLAN (FIRE ALARM).
E-217	ELECTRICAL LEVEL 03 FLOOR PLAN (POWER).
E-218	ELECTRICAL LEVEL 03 FLOOR PLAN (LIGHTING).
E-219	ELECTRICAL LEVEL 03 FLOOR PLAN (LIGHTING).
E-220	ELECTRICAL LEVEL 03 FLOOR PLAN (LIGHTING).
E-221	ELECTRICAL LEVEL 03 FLOOR PLAN (FIRE ALARM).
E-222	ELECTRICAL ROOF PLAN.
E-223	ELECTRICAL ROOF PLAN (LIGHTNING PROTECTION PLAN).
E-301	ELECTRICAL ONE-LINE DIAGRAM.
E-302	ELECTRICAL PART ONE-LINE POWER DIAGRAM.
E-303	IT/COMMUNICATIONS RISER DIAGRAM
E-304	ELECTRICAL PANEL SCHEDULES.
E-305	ELECTRICAL DETAILS.
E-306	GENERATOR DETAILS.
E-307	IT/DATA SPECIFICATIONS AND DETAILS.

LIGHTING FIXTURE SCHEDULE

IN ADDITION TO THE SPECIFIED FEATURE ON THIS SCHEDULE. WHERE FIXTURE TYPE IS INDICATED WITH AN "E" AND/OR FIXTURE SYMBOL IS HALF SHADED, PROVIDE BATTERY BACK-UP EMERGENCY PACK TO AUTOMATICALLY ILLUMINATE FIXTURE FOR 2 HOUR ON LOSS OF UTILITY POWER						
WATTS PER FIXTURE	TYPE		LAMPS	DESCRIPTION	MANUFACTURER AND MODEL	REMARKS
22W	A		LED	6" RECESSED DOWN LIGHT FOR GENERAL LIGHTING. 2,000 LUMENS	HALO COMMERCIAL HC6200D10-HM612840-61MDW	
40W	B			47.9"x23.8"x3.9" RECESSED TROFFER LOW PROFILE GENERAL OFFICE LIGHTING	LSI LPEC24-LED-48L-UNV-DIM1 -35-(EM10)	
	BB		LED	47.9"x23.8"x3.9" RECESSED TROFFER LOW PROFILE GENERAL OFFICE LIGHTING	LSI LPEC24-LED-30L-UNV-DIM1 -35-(EM10)	
20W	BA		LED	2'x2' RECESSED TROFFER FIXTURE GENERAL OFFICE LIGHTING	LSI OPT22 LED LENSED TROFFER OPT22-LED45L-W-UNV-40	
32W	C		LED	DECO DRUM 1-SERIS S16 ENERGY STAR VERSION 24" ROUND DRUM PENDANT	LEGION LIGHTING CO., INC MODEL 2408 516-2408-WMA-L14-30-120 -F100C-CM3-WH-8"	WHERE INDICED WITH "E" IN TYPE AND/OR WHERE SYMBOL IS HALF SHADED: PROVIDE WITH DC BATTERY EMERGENCY PACK IN SEPARATE NEMA-1 ENCLOSURE (CONCEALED IN CLOSEST INTERIOR ACCESSIBLE CEILING CAVITY. CIRCUIT TO ILLUMINATE LIGHT ON LOSS OF POWER.
-W	D		LED	LOBBY TRIPLE RING PENDANT	STONE LIGHTING RINGS SUSPENSION CH143-CR-BB-604233	
77W	F			LINEAR PENDANT	KUZZO EERIE PD19359 PENDANTS PD19359-AN ANTIQUE BRASS	
106W	H		LED	RING PENDANT	KUZZO PD22753 PENDANT LAMP BS BRUSHED SILVER	
37W	HA		LED	PROFESSIONAL TRACK WITH LED LIGHT HEADS	TARGETTI #STP-0-10V-PW-L2-35-WF (LIGHT HEADS)	PROVIDE TARGETTI 9000-ULB-B-ST-120 (9004/W, 9001/9002/W/3C, ETC.) TRACK LENGTHS (MODIFIED AS REQUIRED) AS DEPICTED BY THE LINE(S) ON THE DRAWINGS. PROVIDE TRACK HEADS AS DEPICTED BY THE TRIANGULAR SYMBOLS SHOWN ON THE LINE(S) REPRESENTING THE TRACK(S)
	HB			LUX ILLUMINAIRE. LED WALL MOUNTED DIRECT LINEAR LIGHTING FIXTURE. 4' SECTIONS AS REQUIRED, WITH JOINER AND END CAPS, TO ACCOMMODATE THE RUN LENGTHS.	LUX ILLUMINAIRE EOS-30-W-D-ASY-750-4-35K-4- UNV (-EB WHERE INDICATED AS TYPE "HBE")	
6.1W PER FOOT	J		LED	RECESSED LINEAR	METALUMEN RAIL 4 RM04 RM40-IL35K-2-M-W-L1-1-T-4	
	K		LED	2' LONG RECESSED LINEAR FIXTURE	METALUMEN RAIL 4 RM04 RM40-IL35K-2-M-W-L1-1-T-4	
xxw	KK		LED	RING PENDANT	G LIGHTING ORBIS II ACRYLIC INTERIOR PENDANT GL-2739-Z-CH-1A	
17W	L		LED	WALL MOUNTED 4' LONG ROTATIONAL SIGNAGE LIGHT WITH SINGLE PIECE EXTRUDED ALUMINUM HOUSING	STARTEK LIGHTING # OPTD-4-1000-SD-35K-PBR -EBR-RWM-UMB10	
8.3W	M		LED	ELEVATOR WALL SCONCE	TECH LIGHTING LINER WALL 700WSLNG-11-N-LED930	WHERE INDICED WITH "E" IN TYPE AND/OR WHERE SYMBOL IS HALF SHADED; PROVIDE WITH DC BATTERY EMERGENCY PACK IN SEPARATE NEMA-1 ENCLOSURE (CONCEALED IN CLOSEST INTERIOR ACCESSIBLE CEILING CAVITY. CIRCUIT TO ILLUMINATE LIGHT ON LOSS OF POWER.
31.45W	N		LED	PENDANT MOUNT LINEAR WET LOCATION	LSI #EG3 4 WET LOCATION EG3-4-LED-04L-DAS-5-UNV- DM-4000-(EM)	
15W	O		LED	SURFACE MOUNT HEIGHT 3" DIAMETER 12" WALL OR CEILING MOUNT	LIGHTWAY BRCC-12-LED-F1P-4 -B99-WSP-DM	WHERE INDICED WITH "E" IN TYPE AND/OR WHERE SYMBOL IS HALF SHADED; PROVIDE WITH DC BATTERY EMERGENCY PACK IN SEPARATE NEMA-1 ENCLOSURE (CONCEALED IN CLOSEST INTERIOR ACCESSIBLE CEILING CAVITY. CIRCUIT TO ILLUMINATE LIGHT ON LOSS OF POWER.
8W	P		LED	SIGN LIGHT	HK USA LIGHTING GROUP #X4UF-CPV-NBR-B-12V-B- 30-ACL W/#TXE-120-12	WP. CIRCUIT VIA POWER SUPPLY. MOUNT POWER SUPPLY IN THE ASSOCIATED ACCESSIBLE INTERIOR CEILING CAVITY AT THE CORRESPONDING FLOOR.
19W	Q		LED	WALL SCONCE	G LIGHTING LUX EXTERIOR SCONCE GL-6618-B-R3-CH-A-A-EM	WP. PROVIDE WITH DC BATTERY EMERGENCY PACK IN SEPARATE NEMA-1 ENCLOSURE (CONCEALED IN CLOSEST INTERIOR ACCESSIBLE CEILING CAVITY. CIRCUIT TO ILLUMINATE LIGHT ON LOSS OF POWER.
20.3W	R		LED	VANITY LIGHT	MODERN FORMS COMPANY MINI LOFT WS-14824-BN-20.3-1826-1588	
12W	S		LED	SHOWER LIGHT NET AREA	TECH LIGHTING ENTRA CL 3" LED ENCL3R-F-L12 (HOUSING) ENCL3R-F-D-935-W-W (TRIM)	
	T		LED	WALL MOUNT LED FIXTURE WITH INTEGRAL OCCUPANCY SENSOR AND DUAL LIGHT LEVEL CONTROL. FIXTURE MAINTAIN LOW LIGHTING LEVEL AT ALL TIMES AND ILLUMINATES TO FULL OUTPUT WHEN OCCUPANCY IS DETECTED. WITH EMERGENCY BALLAST.	LSI COLUMBIA# LBIL435MLUELL14	PROVIDE PENDANT MOUNTING WHERE NOT WALL MOUNTED.
	HR		LED	FLEX LED STRIP LIGHTING BUILT-IN TO ARCHITECTURAL HAND RAIL. 2.8 WATTS/FT. REMOTE 120-24V POWER SUPPLY. CONCEALED ACCESS. ANGLE FITTINGS. HAND RAIL TRACK WITH LENS.	LEDSCAPE #L1EX-1-HP-30-65-HR19-D-P WITH P2400240U POWER SUPPLIES IN NEMA 1 ENCLOSURE	CUSTOM WIRED TO REMOTE POWER SUPPLY. CONCEALED LIGHTING STRIPS AND WIRING
48	V		LED	OUTDOOR LED AREA LIGHT	LSI MIRADA MEDIUM OUTDOOR LED AREA LIGHT MRW LED-07L-SIL-FT-30-70CRI	PROVIDE WITH LSI #4RP-B3-S10G-10"-S-STANDARD COLOR-GA-4SRBS. PROVIDE (2) ADDITIONAL RGS SPARE 3/4" C FROM POLE BASE THROUGH CONCRETE BASE TO BELOW GRADE. PROVIDE MSBT INTEGRATED MOTION SENSOR PROGRAMMED TO CONTROL BI-LEVEL ILLUMINATION.
48	VA		LED	OUTDOOR LED AREA LIGHT WITH SHIELDING	LSI MIRADA MEDIUM OUTDOOR LED AREA LIGHT MRW LED-07L-SIL-FT-30- 70CRI-IL	PROVIDE WITH LSI #4RP-B3-S10G-10"-S-STANDARD COLOR-GA-4SRBS. PROVIDE (2) ADDITIONAL RGS SPARE 3/4" C FROM POLE BASE THROUGH CONCRETE BASE TO BELOW GRADE. PROVIDE MSBT INTEGRATED MOTION SENSOR PROGRAMMED TO CONTROL BI-LEVEL ILLUMINATION.
48	W		LED	OUTDOOR LED AREA LIGHT	LSI MIRADA MEDIUM OUTDOOR LED AREA LIGHT MRW LED-07L-SIL-5W-30-70CRI	PROVIDE WITH LSI #4RP-B3-S10G-10"-S-STANDARD COLOR-GA-4SRBS. PROVIDE (2) ADDITIONAL RGS SPARE 3/4" C FROM POLE BASE THROUGH CONCRETE BASE TO BELOW GRADE. PROVIDE MSBT INTEGRATED MOTION SENSOR PROGRAMMED TO CONTROL BI-LEVEL ILLUMINATION.
23	X		LED	SEE SYMBOL LIST FOR FIXTURE DESCRIPTION	RAB LIGHTING #WPLED34L750UPCU	
85	Y		LED	OUTDOOR LED AREA LIGHT	LSI MIRADA MEDIUM OUTDOOR LED AREA LIGHT MRW LED-12L-SIL-FT-30-70CRI	PROVIDE WITH LSI #4RP-B3-S10G-10"-S-STANDARD COLOR-GA-4SRBS. PROVIDE (2) ADDITIONAL RGS SPARE 3/4" C FROM POLE BASE THROUGH CONCRETE BASE TO BELOW GRADE. PROVIDE MSBT INTEGRATED MOTION SENSOR PROGRAMMED TO CONTROL BI-LEVEL ILLUMINATION.
85	YA		LED	OUTDOOR LED AREA LIGHT WITH SHIELDING	LSI MIRADA MEDIUM OUTDOOR LED AREA LIGHT MRW LED-12L-SIL-FT -30-70CRI-IL	PROVIDE WITH LSI #4RP-B3-S10G-10"-S-STANDARD COLOR-GA-4SRBS. PROVIDE (2) ADDITIONAL RGS SPARE 3/4" C FROM POLE BASE THROUGH CONCRETE BASE TO BELOW GRADE. PROVIDE MSBT INTEGRATED MOTION SENSOR PROGRAMMED TO CONTROL BI-LEVEL ILLUMINATION.
27	Z		LED	OUTDOOR RADIAL EMISSION LED BOLLARD	TARGETTI RADIAL EMISSION OUTDOOR LED BOLLARD MBB414036L330FE	PROVIDE (2) ADDITIONAL RGS SPARE 3/4" C FROM POLE BASE THROUGH CONCRETE BASE TO BELOW GRADE.
11	AB			OUTDOOR IN-GROUND MOUNTED MONUMENT LIGHT ENCLOSED AND GASKETED. COMPOSITE BRONZE. WELL LIGHT	KIM LIGHTING #LVB2EB18LXUVPL	
			LED	AUTOMATIC EMERGENCY LIGHTING UNIT WITH 2 LED HEADS		
3.8			LED	CEILING MOUNTED EDGELET EXIT SIGN WITH GREEN LETTERS AND INTEGRATED BATTERY BACK-UP	PHILIPS 44RLU2R-NYC-G-EM. SHADED ARE DENOTES ILLUMINATED FACE. ARROWS AS INDICATED	WITH EMERGENCY BATTERY PACK TO ILLUMINATE FIXTURE FOR 2 HOUR ON LOSS OF UTILITY POWER. PROVIDE CONSTANT HOT SENSING LEG IN ADDITION TO SWITCH LEG(S). ARROW(S) INDICATES DIRECTIONALITY
3.8			LED	WALL MOUNTED EDGELET EXIT SIGN WITH GREEN LETTERS AND INTEGRATED BATTERY BACK-UP	PHILIPS 44RLU1R-NYC-G-EM. SHADED ARE DENOTES ILLUMINATED FACE. ARROWS AS INDICATED	WITH EMERGENCY BATTERY PACK TO ILLUMINATE FIXTURE FOR 2 HOUR ON LOSS OF UTILITY POWER. PROVIDE CONSTANT HOT SENSING LEG IN ADDITION TO SWITCH LEG(S). ARROW(S) INDICATES DIRECTIONALITY
3.8			LED	WALL MOUNTED EXIT SIGN WITH DUAL EMERGENCY LIGHTS, GREEN LETTERS AND INTEGRATED BATTERY BACK-UP	PHILIPS 44RLU1R-NYC-RH-G-EM. ARE DENOTES ILLUMINATED FACE. ARROWS AS INDICATED	WITH EMERGENCY BATTERY PACK TO ILLUMINATE FIXTURE FOR 2 HOUR ON LOSS OF UTILITY POWER. PROVIDE CONSTANT HOT SENSING LEG IN ADDITION TO SWITCH LEG(S). ARROW(S) INDICATES DIRECTIONALITY



- ① REMOVE THE ELECTRICAL DEVICES AND CIRCUITRY IN THESE ROOM(S) AND AREA(S) AS REQUIRED TO ACCOMMODATE THE MODIFICATIONS UNDER THIS CONTRACT. THE CONTRACTOR SHALL BE RESPONSIBLE FOR THE ATTACHED ELECTRICAL RACKS, MAINTAIN THE ELECTRICAL CIRCUITRY(S) FOR REUSE IN THE NEW LAYOUT(S).
- ② REMOVE THE ELECTRICAL DEVICES AND CIRCUITRY IN THIS AREA TO ACCOMMODATE THE IT/DATA RACEWAY BANK AND ASSOCIATED SOFFIT ACROSS THE CORRIDOR.
- ③ TEMPORARILY REMOVE THE EXISTING ELECTRICAL EQUIPMENT AND DEVICES IN THE CEILING OF THIS AREA TO ACCOMMODATE THE INSTALLATION OF THE IT/DATA RACEWAY BANK. REINSTALL ALL EQUIPMENT AND DEVICES BACK TO THE ORIGINAL LOCATION WHEN DIRECTED BY THE OWNER.
- ④ RELOCATE EXISTING UTILITY METER TO ACCOMMODATE WORK UNDER THIS CONTRACT.

MAGNETIC NORTH PROJECT NORTH

[illegible]

ELECTRICAL BASEMENT LEVEL FLOOR PLAN (REMOVALS)

PROJECT NO.: 2219-05

DRAWING NO.:

E-101

KEYED NOTES

- UNDERGROUND RACEWAYS FOR ADDITIONAL/RELOCATED COMMUNICATIONS SERVICES. SEE COMMUNICATIONS ONE-LINE DIAGRAM AND RISER FOR ADDITIONAL INFORMATION.
- BUILDING END BOX FOR ADDITIONAL FIBER OPTIC/TELCO SERVICE CABLING.
- MULTIPLE RACEWAYS AND CIRCUITRY FROM SITE/BUILDING EXTERIOR (EAST SIDE). UTILIZE THE UNDERGROUND ACCESS CREATED FOR THE COMMUNICATIONS ENTRY TO ACCOMMODATE THIS WORK AND TO MAINTAIN CONCEALED BUILDING ENTRIES.
- IT/COMMUNICATION RACEWAY BANK. RUN IN EXISTING CEILING CAVITY. MODIFY ROUTING AND GROUPINGS TO ACCOMMODATE EXISTING CONDITIONS. SEE RISER DIAGRAM FOR ADDITIONAL INFORMATION.
- IT/COMMUNICATION RACEWAY BANK. TRANSITIONED TO UNDERGROUND. SEE RISER DIAGRAM FOR ADDITIONAL INFORMATION.
- SERVICES/CIRCUITRY/FEEDERS. SEE SITE PLAN, ONE-LINE DIAGRAM AND GENERATOR DETAILS FOR ADDITIONAL INFORMATION.
- SPARE RACEWAYS. SEE SITE PLAN FOR ADDITIONAL INFORMATION.
- PROVIDE FUEL OIL MONITORING SYSTEM FOR GENERATOR BASE MOUNTED FUEL TANK. PROVIDE REMOTE PANEL WITH ANNUNCIATOR AND NETWORK CARD.
- PROVIDE REMOTE ANNUNCIATOR FOR OUTDOOR GENERATOR. PROVIDE WITH NETWORK CARD.
- PROVIDE 8 CHANNEL DIGITAL ASTRONOMICAL TIME SWITCH. TORK ELC78. PROVIDE EPC-LC EXTERIOR PHOTO SENSOR. PROGRAM EACH CHANNEL FOR CONTROL TIME/SEQUENCE AS DIRECTED BY THE OWNER'S REPRESENTATIVE.
- CIRCUIT EACH OF THE TIMESWITCH CHANNELS TO LIGHTING CONTROL DIGITAL INPUTS TO CONTROL THE ASSOCIATED CIRCUITS. PROVIDE LIGHTING CONTROL NETWORK INTERFACE(S) TO ACCOMMODATE THIS CONTROL.
- RUN IN RACEWAY UP TO FLOOR ABOVE ACCESSIBLE CEILING CAVITIES.
- CIRCUIT THIS LIGHT TO BE AT 30% ILLUMINATION AT ALL TIME AND TO INCREASE TO 100% ON ACTIVATION OF OCCUPANCY SENSOR.
- PROVIDE (8)MULTIPOLE ASCO CONTROL RELAYS FOR SITE LIGHTING CONTROL (SWITCH LEGS INDICATED WITH "lc"). INTERFACE WITH DIGITAL CONTROLLER(S). PROVIDE TIMECLOCK, PHOTO CELL AND NETWORK OVERRIDE.
- CIRCUIT DESIGNATION IS ARBITRARY. CIRCUIT REPLACEMENT DEVICES, FIXTURE(S) ETC., TO THE EXISTING/ORIGINAL CIRCUITRY/CONTROLS. MODIFY CIRCUITRY AS REQUIRED. WHERE UPDATED CONTROLS ARE INDICATED, PROVIDE CONTROL CIRCUITRY AS INDICATED.
- TEMPORARILY REMOVE THE EXISTING ELECTRICAL EQUIPMENT AND DEVICES IN THE CEILING OF THIS AREA TO ACCOMMODATE THE INSTALLATION OF THE IT/DATA RACEWAY BANK. REINSTALL ALL EQUIPMENT AND DEVICES BACK TO THE ORIGINAL CONDITION WHEN DIRECTED BY THE OWNER.
- FOR POINT OF USE WATER HEATER. MOUNT ABOVE ACCESSIBLE CEILING. SEE MECHANICAL PLANS FOR EXACT LOCATION(S). CIRCUIT TO THE NEAREST 120VAC PANELBOARD USING 2#12, #12G-3/4"C. PROVIDE 1P-20A OCPD.
- PROVIDE STAND ALONE (HARD WIRED CONVENTIONAL) TYPE DEVICES WHERE LIGHTING CONTROL DEVICES ARE SHOWN WITHOUT CONNECTION TO THE LIGHTING CONTROL NETWORK. TYPICAL.
- EXISTING MAIN SERVICE CT AND 52-M1 SECTION.
- FULLY RATED 1600A 120/208VAC 3# 4W+G BUSS TAP 90' ELL. PROVIDE CUSTOM UTILITY GRADE CORNER STRUCTURE/SECTION.
- 52-M2 SECTION.
- RELOCATE THE ELECTRIC UTILITY METER. EXTEND CIRCUITRY AS REQUIRED. PROVIDE WEATHER PROOF 3R PAN/ENCLOSURE. COMPLY WITH ALL UTILITY REQUIREMENTS.

SEE ALTERNATE FOR ADDITIONAL WORK

KEYED NOTES (GROUNDING)

- PROVIDE 5/8" 10' LONG COPPER CLAD GROUND ROD. LOCATE IN AREA(S) WITH NORMAL GROUND COVER (EXPOSED TO NORMAL PRECIPITATION). DRIVE INTO EARTH UNTIL TOP OF ROD IS 6" BELOW THE FINISHED GRADE.
- #2AWG BARE TINNED COPPER CONDUCTOR, MINIMUM 3'6" BELOW GRADE IN DIRECT CONTACT WITH EARTH. BOND TO ROD(S) USING CADCWELD CONNECTION(S) BELOW THE FROST LINE TO PREVENT DAMAGE FROM HEAVING.
- BONDING ELECTRODE CONDUCTOR. BOND TO ROD USING CADCWELD CONNECTION. SEE ONE-LINE FOR ADDITIONAL INFORMATION.
- LOCATION OF WATER SERVICE ENTRANCE. BOND BONDING ELECTRODE CONDUCTOR. SEE ONE-LINE FOR ADDITIONAL INFORMATION.
- BONDING ELECTRODE CONDUCTOR. RUN BELOW SLAB/GRADE IN FIBERGLASS RACEWAY. SEE ONE-LINE FOR ADDITIONAL INFORMATION.
- RUN TO MAIN ELECTRICAL GROUND/BOND POINT UNDER GROUND/SLAB IN FIBERGLASS RACEWAY.
- TURN UP THROUGH SLAB (IN FIBERGLASS RACEWAY FOR IN SLAB PORTION), CADCWELD TO BASE OF BUILDING STEEL.

2 PART BASEMENT LEVEL FLOOR PLAN (POWER)
SCALE: 1/8"=1'-0"



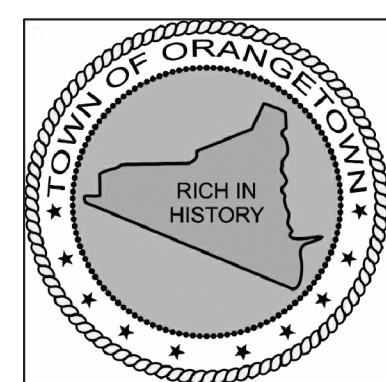
ELECTRICAL BASEMENT LEVEL
FLOOR PLAN (POWER)

PROJECT NO.: 2219-05

DRAWING NO.:

E-202

ORANGETOWN
TOWN HALL
ADDITION AND ALTERATIONS
26 ORANGEBURG RD
ORANGEBURG, NEW YORK 10962



KEYED NOTES

- ① 2" RACEWAY UNDERGROUND FOR FIRE ALARM CIRCUITRY OUT TO GENERATOR.
② 2" RACEWAY UNDERGROUND FOR FIRE ALARM CIRCUITRY OUT TO SPRINKLER SERVICE "HOT-BOX" OUT BY STREET. SEE SITE PLAN FOR ADDITIONAL INFORMATION.

one inch = one foot

three quarters inch = one foot

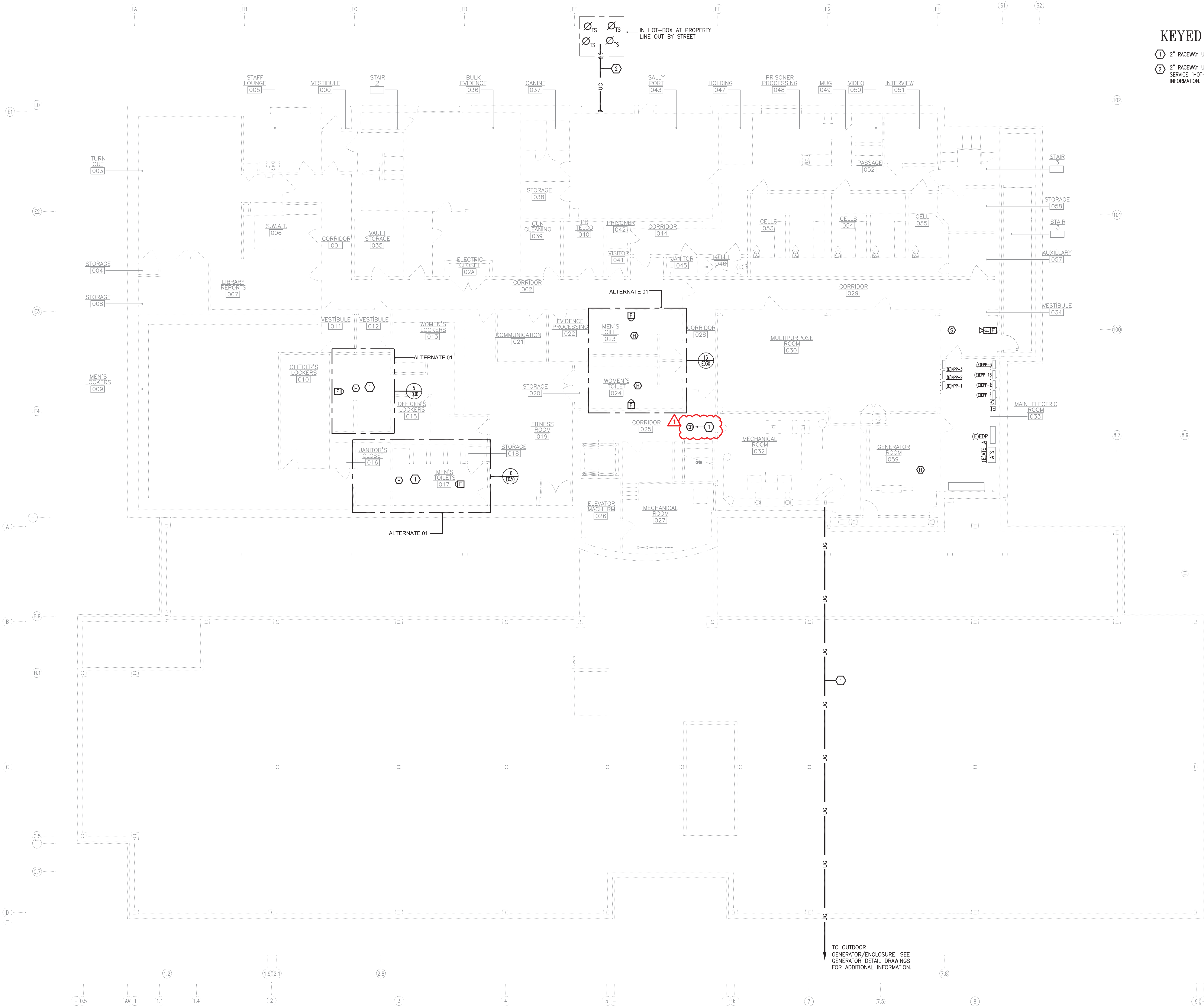
one half inch = one foot

three eighths inch = one foot

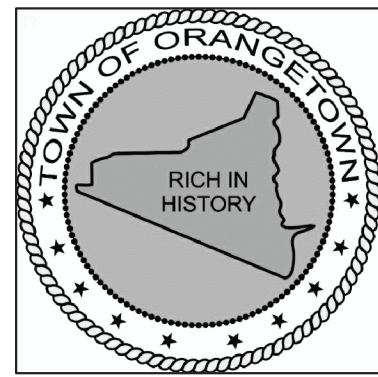
one eighth inch = one foot

one eighth inch = one foot

S:\20\PROJECTS\2021\21030 Orangetown Town Hall Renovation\Drawings\PROJECTS-BASMENT.dwg



① PART BASEMENT LEVEL FLOOR PLAN (FIRE ALARM)
SCALE: 1/8"=1'-0"



ORANGETOWN
TOWN HALL
ADDITION AND ALTERATIONS

26 ORANGEBURG RD
ORANGEBURG, NEW YORK 10962

ELECTRICAL BASEMENT LEVEL
FLOOR PLAN (FIRE ALARM)

PROJECT NO.: 2219-05

DRAWING NO.:

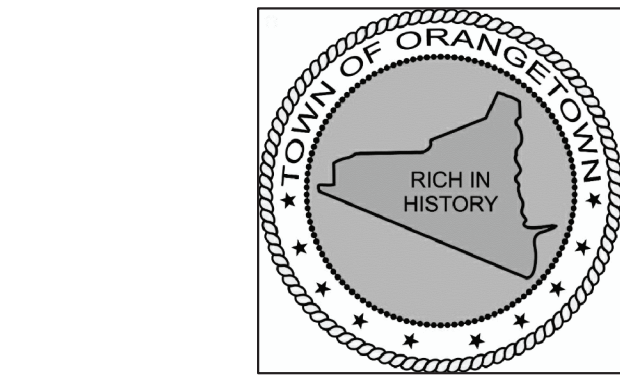
E-206

KEYED NOTES

1. CIRCUIT GAS SOLENOID VALVE TO SHUT DOWN FUEL FEED TO THE ASSOCIATED UNIT ON DETECTION OF CARBON-MONOXIDE BY THE CO DETECTOR ASSOCIATED WITH THE FUEL FIRED UNIT..

1. PART LEVEL 02 PLAN (FIRE ALARM)

SCALE: 1/8"=1'-0"



ORANGETOWN
TOWN HALL
ADDITION AND ALTERATIONS

26 ORANGEBURG RD
ORANGEBURG, NEW YORK 10962

ELECTRICAL LEVEL 02 PLAN
(FIRE ALARM)

PROJECT NO.: 2219-05

DRAWING NO.:

E-216

KEYED NOTES

1. CIRCUIT GAS SOLENOID VALVE TO SHUT DOWN FUEL FEED TO THE ASSOCIATED UNIT ON DETECTION OF CARBON-MONOXIDE BY THE CO DETECTOR ASSOCIATED WITH THE FUEL FIRED UNIT..

1 PART LEVEL 03 PLAN (FIRE ALARM)

SCALE: 1/8"=1'-0"



ORANGETOWN
TOWN HALL
ADDITION AND ALTERATIONS

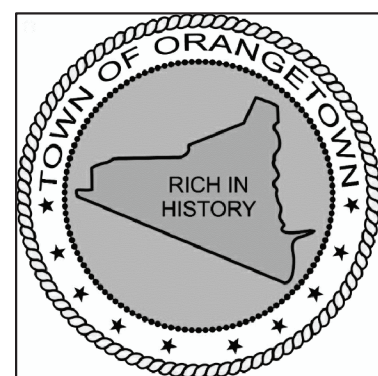
26 ORANGEBURG RD
ORANGEBURG, NEW YORK 10962

ELECTRICAL LEVEL 03 PLAN
(FIRE ALARM)

PROJECT NO.: 2219-05

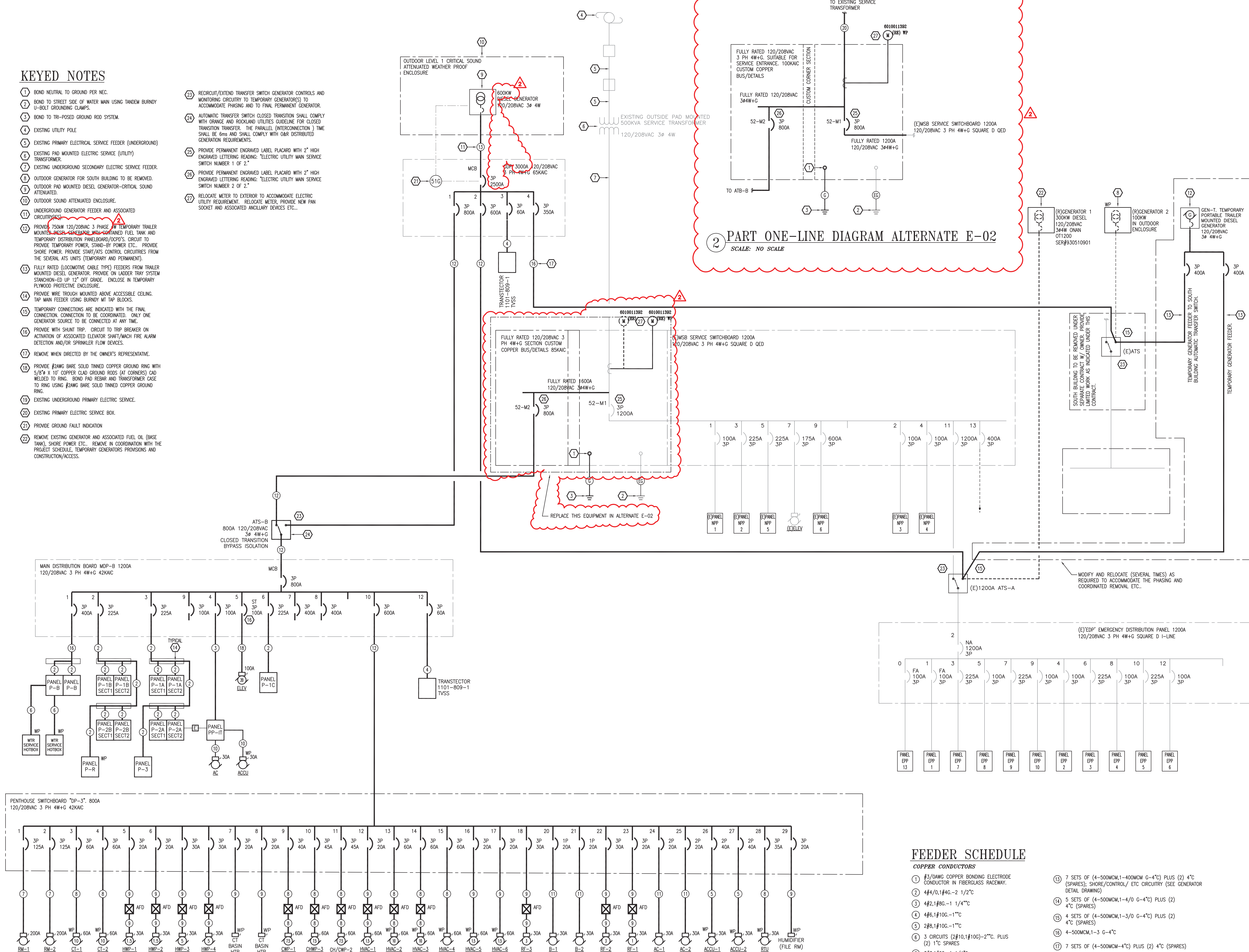
DRAWING NO.:

E-221



- 1 BOND NEUTRAL TO GROUND PER NEC.
- 2 BOND TO STREET SIDE OF WATER MAIN USING TANDEM BOLT
- HOT ENDING DOWN
- 3 BOND TO TRI-POSED GROUND ROD SYSTEM.
- 4 EXISTING UTILITY POLE
- 5 EXISTING PRIMARY ELECTRICAL SERVICE FEEDER (UNDERGROUND)
TRANSFORMER
- 6 EXISTING PAD MOUNTED ELECTRIC SERVICE (UTILITY)
TRANSFORMER
- 7 EXISTING UNDERGROUND SECONDARY ELECTRIC SERVICE FEEDER
- 8 OUTDOOR GENERATOR FOR SOUTH BUILDING TO BE REMOVED.
- 9 OUTDOOR PAD MOUNTED DIESEL GENERATOR-CRITICAL SOUND
ATTENUATED
- 10 OUTDOOR SOUND ATTENUATED ENCLOSURE.
- 11 UNDERGROUND GENERATOR FEEDER AND ASSOCIATED
CIRCUITRY(S)
- 12 PROVIDE 7500V 120/208V/3X PHASE IN TEMPORARY TRAILER
MOUNTED DIESEL GENERATOR. PROVIDE 120V/208V/3X AND
TEMPORARY DISTRIBUTION PANELBOARD/CPD/S. CIRCUIT TO
FACILITY (UP TO 12" OR 18" GROUND) AND POWER (ELECTRIC
GENERATOR POWER). PROVIDE START/STOP/STOP CIRCUIT FROM
THE SEVERAL ITS UNITS (TEMPORARY AND PERMANENT).
- 13 FULLY RATED (LOCOMOTIVE CABLE TYPE) FEEDERS FROM TRAILER
MOUNTED DIESEL GENERATOR. PROVIDE ON LOCATOR TRAIL SYSTEM
SIGNAL (UP TO 12" OR 18" GROUND) ENCLOSE IN TEMPORARY
FLYMOOD PROTECTIVE ENCLOSURE.
- 14 PROVIDE WIRE TROUGH MOUNTED ABOVE ACCESSIBLE CEILING.
TRAIL MAIN FEEDER USING BURNDY MT PIPE BLOCKS.
- 15 TEMPORARY CONNECTIONS ARE INDICATED WITH THE FINAL
CONNECTION. CONNECTION TO BE COORDINATED. ONLY ONE
GENERATOR SOURCE TO BE CONNECTED AT ANY TIME.
PROVIDE WITH SHUNT TRIP. CIRCUIT TO TRIP BREAKER ON
ACTIVATION OF ALLEVATOR ELEVATOR SHAFT/MAJOR FIRE ALARM
DETECTION AND/OR SPRINKLER FLOW DEVICES.
- 16 REMOVE WHEN DIRECTED BY THE OWNER'S REPRESENTATIVE.
- 17 PROVIDE #2W/B BASE CAD GROUND RODS WITH
5/8"x 1/2" COPPER BASE PAD AND GROUND RODS (AT CORNERS) CAD
WELDED TO RING. BOND PAD REBAR AND TRANSFORMER CASE TO
RING USING #2W/B BASE PAD SHOWN COPPER GROUND RING
EXISTING.
- 18 EXISTING UNDERGROUND PRIMARY ELECTRIC SERVICE.
- 19 EXISTING PRIMARY ELECTRIC SERVICE BOX.
- 20 PROVIDE GROUND FAULT INDICATION
- 21 REMOVE EXISTING GENERATOR AND ASSOCIATED FUEL OIL (BASE
TANK), SHORE POWER AREA. REMOVE IN COORDINATION WITH THE
PROJECT SCHEDULE. TEMPORARY GENERATORS PROVISIONS AND
CONSTRUCTION/ACCESS.

- 23 RECONFIG/EXTEND TRANSFER SWITCH GENERATOR CONTROLS AND MONITORING CIRCUITRY TO TEMPORARILY COMPENSATE GENERATOR(S) TO ACCOMMODATE PHASING AND TO FINAL PERMANENT GENERATOR.
- 24 TRANSFER TRANSFER SWITCH CLOSED TRANSITION SHALL COMPLY WITH ORANGE AND ROCKLAND UTILITIES GUIDELINE FLOW CLOSED TRANSITION TRANSFER. THE PARALLEL (INTERCONNECTION) TIME SHALL BE 6ms AND SHALL COMPLY WITH O&R DISTRIBUTED GENERATION REQUIREMENTS.
- 25 PROVIDE PERMANENT ENGRAVED LABEL PLACARD WITH 2" HIGH ENGRAVED LETTERING READING: "ELECTRIC UTILITY MAIN SERVICE SWITCH NUMBER 1 OF 2."
- 26 PROVIDE PERMANENT ENGRAVED LABEL PLACARD WITH 2" HIGH ENGRAVED LETTERING READING: "ELECTRIC UTILITY MAIN SERVICE SWITCH NUMBER 2 OF 2."
- 27 RELOCATE TRAILER TO EXTERIOR TO ACCOMMODATE ELECTRIC UTILITY REQUIREMENTS. RELOCATE TRAILER, PROVIDE NEW PAN SKELETAL AND ASSOCIATED ANCHORAGE, DEVICES, ETC.



1 ELECTRICAL ONE-LINE DIAGRAM
SCALE: NO SCALE

COPPER CONDUCTORS

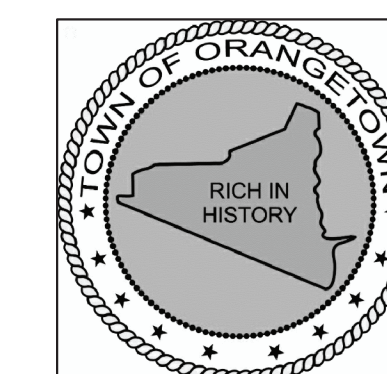
- | | | | |
|----|---|----|--|
| 1 | #3/0AWG COPPER BONDING ELECTRODE CONDUCTOR IN FIBERGLASS RACEWAY. | 13 | 7 SETS OF (4-500MCM,1-400MCM G-4") PLUS (2) 4" (SPARES); SHORE/CONTROL/ ETC CIRCUITRY (SEE GENERATOR DETAIL DRAWING) |
| 2 | 4#4/0,1#4G-2 1/2" | 14 | 5 SETS OF (4-500MCM,1-4/0 G-4") PLUS (2) 4" (SPARES) |
| 3 | 4#2,1#6G-1 1/4" | 15 | 4 SETS OF (4-500MCM,1-3/0 G-4") PLUS (2) 4" (SPARES) |
| 4 | 4#6,1#10G-1-1" | 16 | 4-500MCM,1-3 G-4" |
| 5 | 2#8,1#16G-1-1" | 17 | 7 SETS OF (4-500MCM-4") PLUS (2) 4" (SPARES) |
| 6 | 3 CIRCUITS (2#10,1#10G)-2-1/2". PLUS (2) 1" SPARES | 18 | 3#4,1#6G-1 1/4" |
| 7 | 3#3,1#6G-1 1/4" | | |
| 8 | 3#8,1#10G-3/4" | | |
| 9 | 3#12,1#12G-3/4" | | |
| 10 | 3#10,1#10G-3/4" | 20 | REPLACE 6 SETS OF (4-500MCM IN EXISTING RACEWAY) |
| 11 | 2#12,1#12G-3/4" | 19 | EXISTING GROUNDING ELECTRODE CONDUCTOR |
| 12 | 2 SETS (4-600MCM,1#1/0G-4") | | |
| | | 21 | #3/0 AWG COPPER GROUNDING ELECTRODE CONDUCTOR IN 1 1/4" DEEP RIGID PVC RACEWAY |

Lothrop Associates LLP Architects
333 Westchester Avenue
White Plains, New York 10604
914-741-1115

White Plains	Rochester	Red Bank	Hartford
--------------	-----------	----------	----------

44-46 Foster Road Suite 7
Hopewell Junction , N.Y. 12533
T (914) 509-6557 F (914) 509-8162

CBK PROJECT NO. 21030

[illegible]

ORANGETOWN
TOWN HALL
ADDITION AND ALTERATIONS

26 ORANGEBURG RD
ORANGEBURG, NEW YORK 10962

ELECTRICAL ONE-LINE DIAGRAM

PROJECT NO.: 2219-05

DRAWING NO.:

E-301