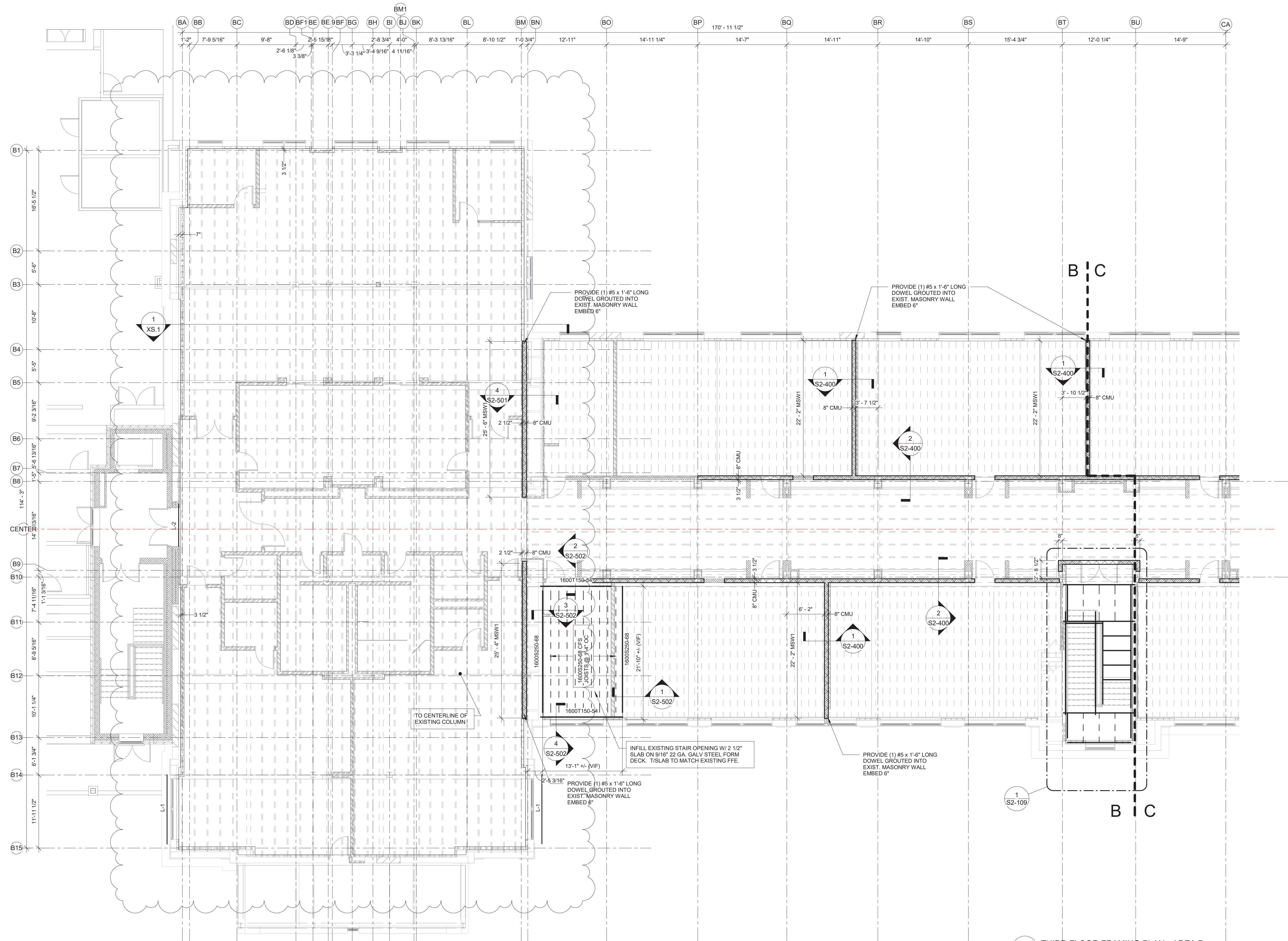


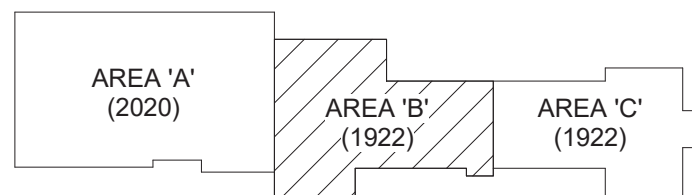
3/8/2022 3:43:27 PM



1 THIRD FLOOR FRAMING PLAN - AREA B
1/8" = 1'-0"

- FRAMING NOTES**
1. DATUM ELEVATION (486.97') IS AT FINISHED THIRD FLOOR TOP OF SLAB AT (0').
 2. ALL EXTERIOR EXPOSED STEEL HOT DIPPED GALV.
 3. TOUCH UP ALL FIELD WELDED CONNECTIONS WITH COLD GALV.
 4. SEE 6/S2-504 FOR TYPICAL FLOOR OPENING FRAME.
 5. SEE 1/S2-500 FOR COLUMN SCHEDULE.
 6. SEE S2-001 FOR POURSTOP SCHEDULE.
 7. SEE 5/S2-400 FOR LOOSE LINTEL SCHEDULE.
 8. SEE 1/S2-504 FOR BEAM STIFFENER DETAIL WHERE BEAM FRAME OVER AND/OR UNDER COLUMN.
 9. MASONRY SHEARWALLS INDICATED AS MSWX ON PLAN. SEE 6/S2-400 FOR SHEARWALL SCHEDULE.

KEY PLAN:



SED CONTROL NO. 27-01-00-01-0-024-009

COPYRIGHT © 2020 - BCA ARCHITECTS & ENGINEERS, WARNING - IT IS A VIOLATION OF THE NEW YORK STATE EDUCATION LAW FOR ANY UNAUTHORIZED ALTERATIONS TO THIS DOCUMENT AS PER ARTICLE 145 AND 147.

BCA Architects & Engineers
Ithaca | Saratoga Springs | Watertown
WWW.THEBCAGROUP.COM

Elwyn & Palmer
CONSULTING ENGINEERS, PLLC
213 East Seneca Street
Ithaca, New York 14850
www.ElwynPalmer.com
607.272.5060

BCA
ARCHITECTS
ENGINEERS

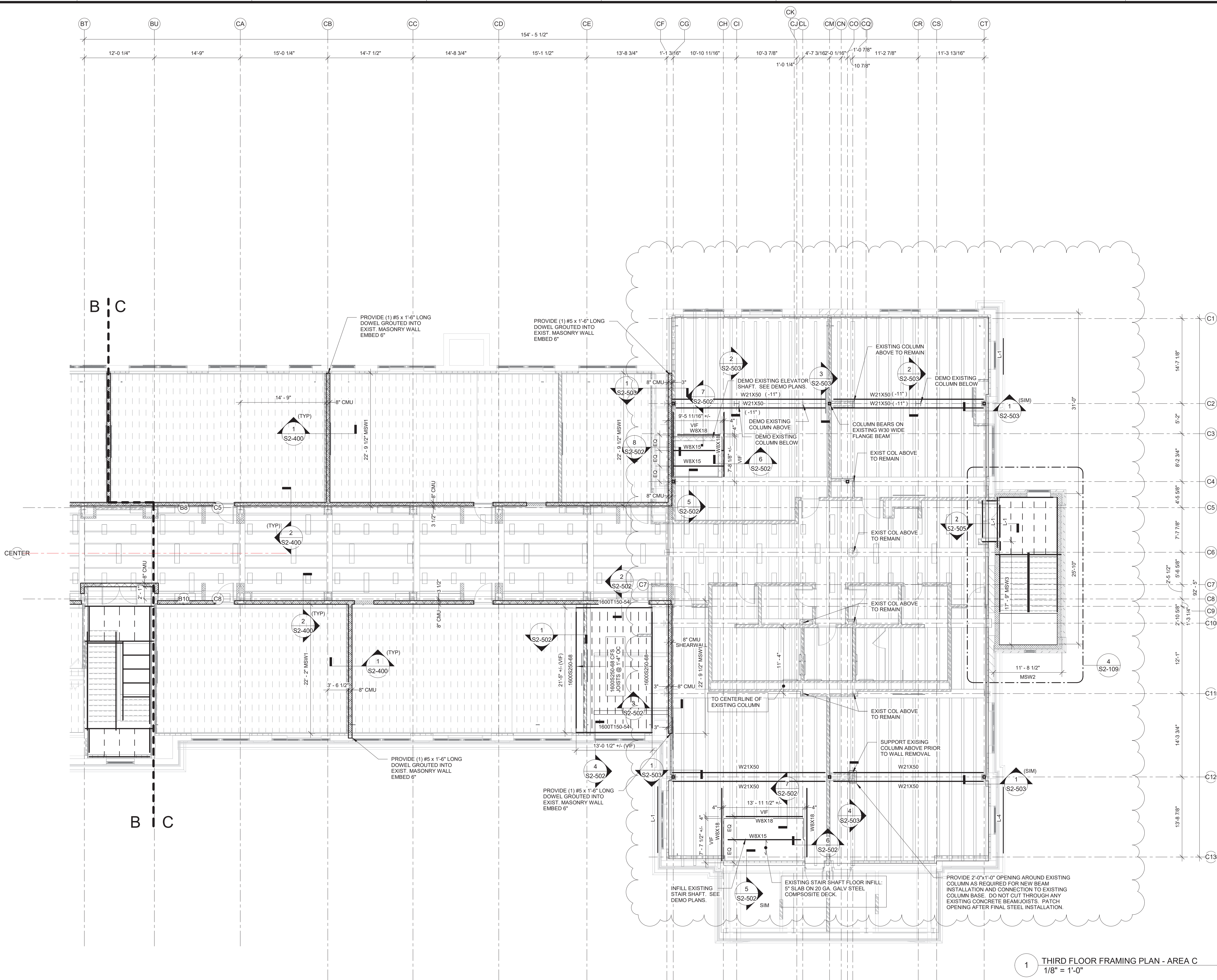


PORT JERVIS CITY SCHOOL DISTRICT
ADDITIONS AND ALTERATIONS TO:
WILLIAM B. TECLER MAGNET
Amsterdam - Montgomery County - New York

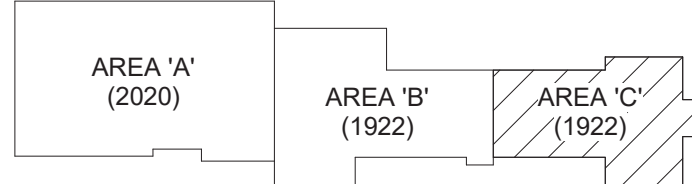
REV	DATE	DESCRIPTION
1	03/10/2022	BID/AD2
DRAWN BY	RAM	PROJECT NUMBER
CHECKED BY	JEC	DATE
		02/04/2022

THIRD FLOOR FRAMING PLAN AREA
B

BUILDING	SHEET NUMBER
MS	S2-104
	RE-BID



KEY PLAN:



SED CONTROL NO. 27-01-00-01-0-024-009
COPYRIGHT © 2020 - BCA ARCHITECTS & ENGINEERS, WARNING - IT IS A VIOLATION OF THE NEW YORK STATE EDUCATION LAW FOR ANY UNAUTHORIZED ALTERATIONS TO THIS DOCUMENT AS PER ARTICLE 145 AND 147.

BCA Architects & Engineers
Ithaca | Saratoga Springs | Watertown
WWW.THEBCGROUP.COM

Elwyn & Palmer
CONSULTING ENGINEERS, PLLC
213 East Seneca Street
Ithaca, New York 14850
www.ElwynPalmer.com
607.272.5060

BCA
ARCHITECTS
ENGINEERS



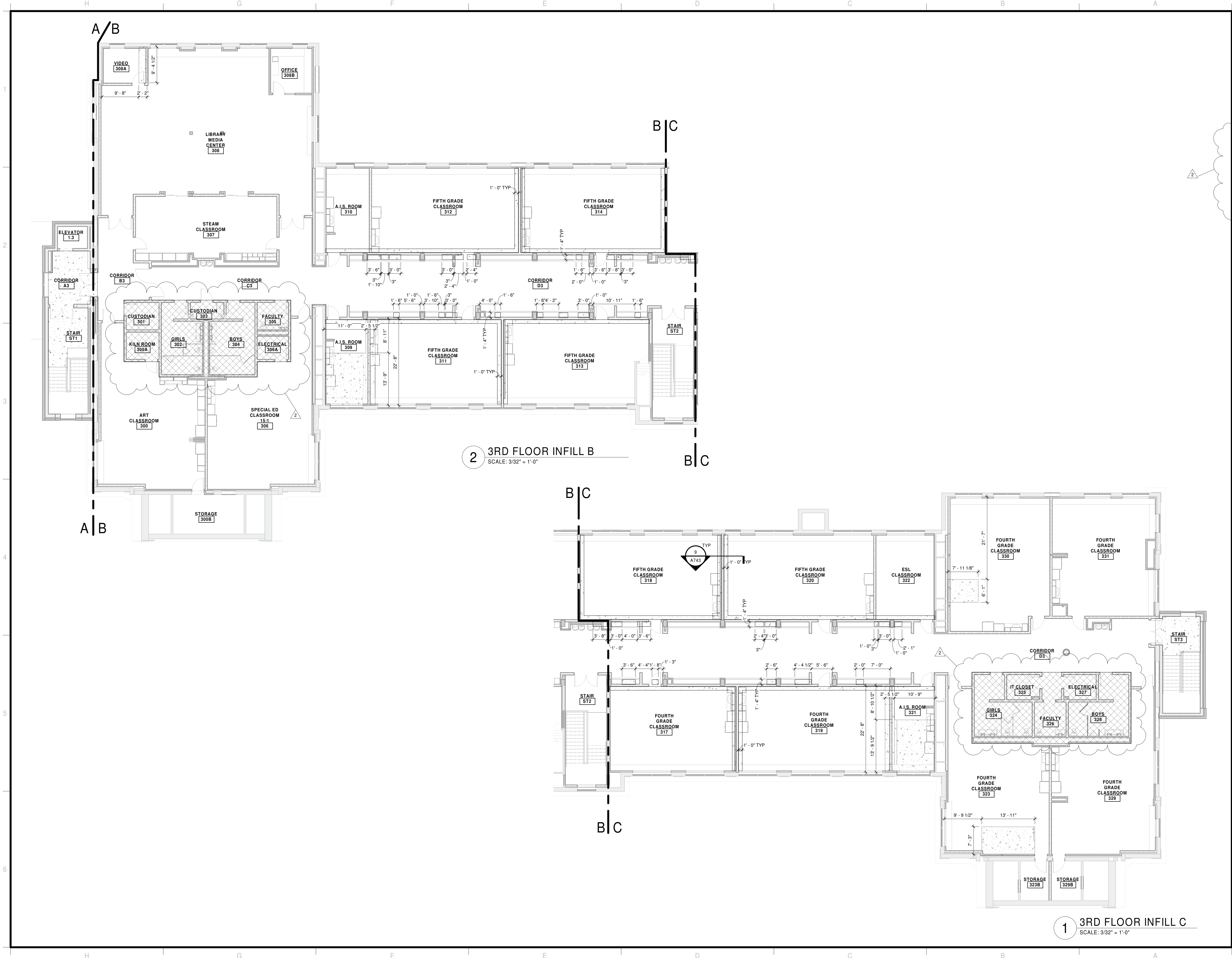
PORT JERVIS CITY SCHOOL DISTRICT
ADDITIONS AND ALTERATIONS TO:
WILLIAM B. TECLER MAGNET
Amsterdam - Montgomery County - New York

REV	DATE	DESCRIPTION
1	03/10/2022	BID/AD2
DRAWN BY RAM		PROJECT NUMBER 2019-011
CHECKED BY JEC		DATE 02/04/2022

THIRD FLOOR FRAMING PLAN AREA C

BUILDING	SHEET NUMBER
MS	S2-105
RE-BID	

3/9/2022 12:11:20 PM



GENERAL SLAB INFILL NOTES:

- GC RESPONSIBLE FOR ALL SLAB INFILLS. COORDINATE WITH OTHER PRIME CONTRACTORS PRIOR TO FINISHING SLAB.
- ALL DIMENSIONS SHOWN ARE FROM FACE OF EXISTING WALLS TO REMAIN. REFER TO AND COORDINATE WITH TRENCHING PLANS.
- DESIGNATES AREA OF REQUIRED SLAB INFILL. COORDINATE NEW SLABS WITH TRENCHING PLANS. REFER TO TYP SLAB INFILL DETAIL.
- DESIGNATES AREA OF REQUIRED SLAB INFILL WITH EXISTING DEPRESSED SLAB TO REMAIN. NEW SLAB TO ALIGN WITH SURROUNDING FLOOR. SLAB TO BE LEVEL AND PREPARED TO ACCEPT NEW FINISH AS INDICATED ON FINISH PLANS. REFER TO EXISTING SLAB INFILL DETAIL.
- INDICATES AREA OF NEW FLOOR SLAB TO ALIGN WITH EXISTING SURROUNDING SLABS. REFER TO STRUCTURAL DRAWINGS 652-502 FOR SLAB TO SLAB CONNECTION DETAILS.
- INDICATES AREA OF REQUIRED FLOOR SUBFLOOR REMOVAL. REMOVE SUBFLOOR AS REQUIRED TO INSTALL NEW FLOORING AS SHOWN ON FINISH PLANS. FINAL FINISH FLOORS TO ALIGN AND BE LEVEL. MAKE NECESSARY CHANGES TO THE EXISTING CONDITIONS TO ALIGN NEW AND EXISTING. VIF.

KEY PLAN:

AREA 'A' (2021) AREA 'B' (1922) AREA 'C' (1922)

SED CONTROL NO. 44-18-00-05-0-005-016

COPYRIGHT © 2021, BCA ARCHITECTS & ENGINEERS, WARNING - IT IS A VIOLATION OF THE NEW YORK STATE EDUCATION LAW FOR ANY UNAUTHORIZED ALTERATIONS TO THIS DOCUMENT AS PER ARTICLE 145 AND 147.

BCA Architects & Engineers
Ithaca | Saratoga Springs | Watertown | Rochester
WWW.THEBCGROUP.COM

BCA
ARCHITECTS
ENGINEERS

Port PRIDE

PORT JERVIS CITY SCHOOL DISTRICT
ADDITIONS AND ALTERATIONS TO:
PORT JERVIS MIDDLE SCHOOL
Port Jervis - Orange County - New York

REV	DATE	DESCRIPTION
2	03/10/2022	BID/AD2

DRAWN BY DRF	PROJECT NUMBER 2019-011 PH1
CHECKED BY SJD	DATE 03/01/2022

THIRD FLOOR INFILL PLAN

BUILDING MS	SHEET NUMBER A113 BID-AD1
-----------------------	--