

DOOR SCHEDULE											
Level	PANEL			MATERIAL	GLAZING	FRAME TYPE	FRAME MATERIAL	FRAME		HARDWARE SET	REMARKS
	NUMBER	WIDTH	HEIGHT	TYPE				DEPTH	HEAD FRAME		
FIRST FLOOR											
FIRST FLOOR	100	3'-0"	7'-0"	S2	ALUM	LOW-E	S2	ALUM		NOTE 1	
FIRST FLOOR	100A	3'-0"	7'-0"	F	WD		HM-1	HM	5 3/4"	2"	NOTE 2
FIRST FLOOR	100B	3'-0"	7'-0"	F	WD		HM-1	HM	5 3/4"	2"	NOTE 2
FIRST FLOOR	101	3'-0"	7'-0"	F	HM		HM-2	HM	5 3/4"	4"	NOTE 2
FIRST FLOOR	102	3'-0"	7'-0"	F	WD		HM-1	HM	5 3/4"	2"	NOTE 2
FIRST FLOOR	104	3'-0"	7'-0"	F	WD		HM-1	HM	5 3/4"	2"	NOTE 2
FIRST FLOOR	105	3'-0"	7'-0"	N	WD	1/4" TEMPERED GLASS	HM-1	HM	5 3/4"	2"	NOTE 3
FIRST FLOOR	105A	9'-8 1/2"	7'-8"	SG	ALUM	LOW-E	A1	ALUM			NOTE 5
FIRST FLOOR	105B	9'-8 1/2"	7'-8"	SG	ALUM	LOW-E	A1	ALUM			NOTE 5
FIRST FLOOR	105C	9'-8 1/2"	7'-8"	SG	ALUM	LOW-E	A1	ALUM			NOTE 5
FIRST FLOOR	106	2'-0"	7'-0"	F	WD		HM-1	HM	5 3/4"	2"	NOTE 2
FIRST FLOOR	A1	3'-0"	7'-0"	N	HM	FIRE RATED GLASS	HM-2	HM	5 3/4"	4"	NOTE 4
FIRST FLOOR	A1A	3'-0"	7'-0"	F	HM		HM-2	HM	5 3/4"	4"	NOTE 1
FIRST FLOOR	B1	3'-0"	7'-0"	N	HM	FIRE RATED GLASS	HM-2	HM	5 3/4"	4"	NOTE 4
FIRST FLOOR	B1A	3'-0"	7'-0"	F	HM		HM-2	HM	5 3/4"	4"	NOTE 1
SECOND FLOOR											
SECOND FLOOR	A2	3'-0"	7'-0"	N	HM	FIRE RATED GLASS	HM-2	HM	5 3/4"	4"	NOTE 4
SECOND FLOOR	B2	3'-0"	7'-0"	N	HM	FIRE RATED GLASS	HM-2	HM	5 3/4"	4"	NOTE 4
THIRD FLOOR											
THIRD FLOOR	301	3'-0"	7'-0"	F	WD		HM-1	HM	5 3/4"	2"	NOTE 2
THIRD FLOOR	A3	3'-0"	7'-0"	N	HM	FIRE RATED GLASS	HM-2	HM	5 3/4"	4"	NOTE 4
THIRD FLOOR	B3	3'-0"	7'-0"	N	HM	FIRE RATED GLASS	HM-2	HM	5 3/4"	4"	NOTE 4
FOURTH FLOOR											
FOURTH FLOOR	401	3'-0"	7'-0"	F	WD		HM-1	HM	5 3/4"	2"	NOTE 2
FOURTH FLOOR	A4	3'-0"	7'-0"	N	HM	FIRE RATED GLASS	HM-2	HM	5 3/4"	4"	NOTE 4
FOURTH FLOOR	B4	3'-0"	7'-0"	N	HM	FIRE RATED GLASS	HM-2	HM	5 3/4"	4"	NOTE 4

GENERAL NOTES - DOORS:

DIMENSIONAL:
DOORS ARE 1-3/4" THICK UNLESS NOTED OTHERWISE.
DOORS TO HAVE A 3/4" UNDERCUT UNLESS NOTED OTHERWISE.
BOTTOM 10" OF PUSH SIDE OF DOOR TO BE A SMOOTH SINGLE PLANE.
BOTTOM EDGE OF VISION LITES TO BE NO HIGHER THAN 43" ABOVE FINISHED FLOOR.
HOLLOW METAL FRAMES TO HAVE A 2" FACE UNLESS NOTED OTHERWISE.

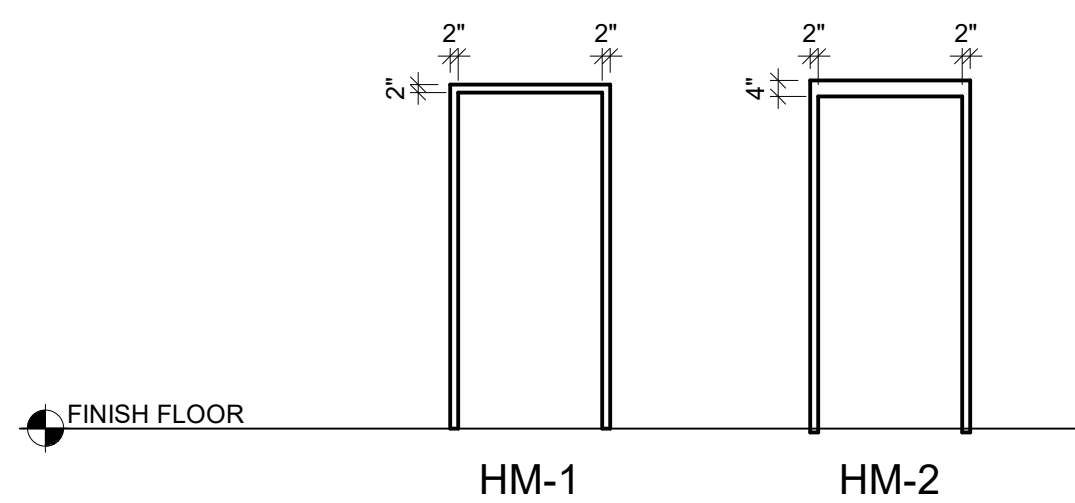
CONSTRUCTION:
HOLLOW METAL DOORS TO HAVE HEADS CAPPED FLUSH WITH TOP EDGE.
HOLLOW METAL DOOR FACES TO BE SEAMLESS 18 GA. STRETCHER LEVEL STEEL.
HOLLOW METAL FRAME CORNERS TO BE WELDED UNLESS NOTED OTHERWISE.
HOLLOW METAL FRAMES TO BE 16 GA. WITH 1/4" REINFORCEMENT.
HOLLOW METAL FRAMES TO HAVE THREE ANCHORS PER JAMB. ANCHORS TO MEET LABEL REQUIREMENTS.
ALL EXTERIOR METAL DOORS AND FRAMES TO BE GALVANIZED UNLESS NOTED OTHERWISE.
HOLLOW METAL FRAMES ARE TO BE DOUBLE RABBIT UNLESS NOTED AS:
SINGLE RABBIT, DOUBLE EGRESS, DOUBLE ACTING/CASED

INSTALLATION:
DOOR SWINGS TO MATCH INDICATION ON PLANS.
PROVIDE A MINIMUM OF 4" FROM PERPENDICULAR PARTITION TO FACE OF BACKBEND.
PROVIDE A MINIMUM OF 18" FROM PERPENDICULAR PARTITION TO DOOR EDGE, PULL SIDE.
PROVIDE A MINIMUM OF 12" CLEAR TO LATCH FROM PERPENDICULAR PARTITION TO DOOR EDGE, PUSH SIDE.
PLAN DIMENSIONS ARE LOCATING THE OUTSIDE OF THE FRAME.

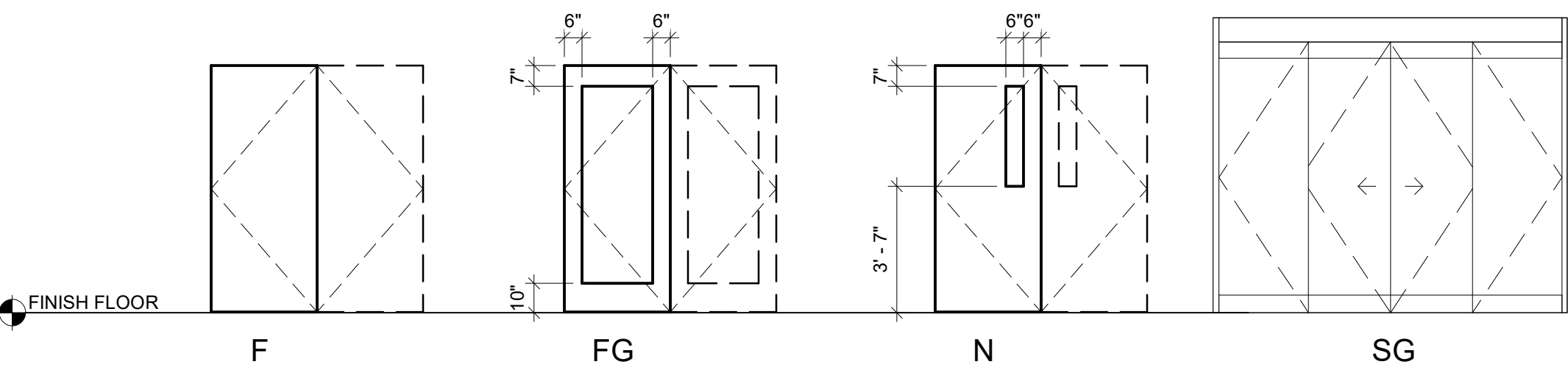
HARDWARE:
ALL EXTERIOR DOORS TO BE WEATHER-STRIPPED.
ALL RATED DOORS TO HAVE SMOKE SEALS.
DOOR HANDLES SHALL BE THE LEVER TYPE AND MEET ANSI 404.2.6.
HARDWARE LOCATIONS AND REINFORCEMENT TO BE PER SDI.

TYPICAL FRAME DEPTHS:

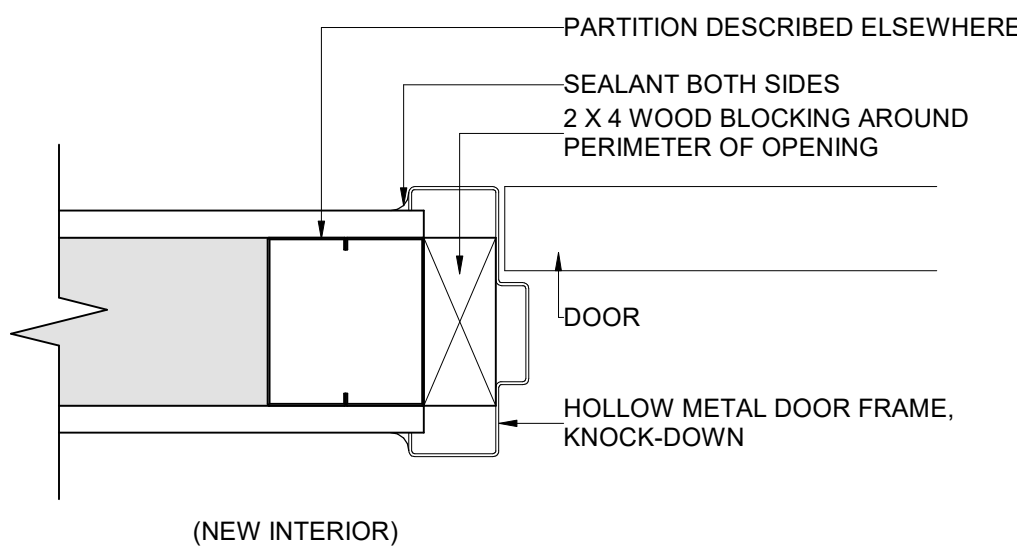
JAMB LOCATION B, HOLLOW METAL FRAMES ARE TO BE 5-3/4" DEEP UNLESS NOTED OTHERWISE.
JAMB LOCATION B, ALUMINUM FRAMES ARE TO BE 4-1/2" DEEP UNLESS NOTED OTHERWISE.
JAMB LOCATION B, WOOD FRAMES ARE TO BE 5" DEEP UNLESS NOTED OTHERWISE.
JAMB LOCATION B, STEEL FRAMES ARE TO BE C12 x 20.7 CHANNELS UNLESS NOTED OTHERWISE.



DOOR FRAME TYPES



DOOR PANEL TYPES



DOOR JAMB DETAIL

ABBREVIATIONS LEGEND:

DOOR MATERIAL:
HM HOLLOW METAL
IM INSULATED METAL
AL ALUMINUM
ST STEEL
WD STAIN-GRADE WOOD
EX EXISTING
WM WOOD GRAIN METAL
PMD PAINT-GRADE WOOD
FRP FIBERGLASS
PL PLASTIC LAMINATE
SS STAINLESS STEEL
FB FABRIC

FRAME MATERIAL:
HM HOLLOW METAL
IM INSULATED METAL
AL ALUMINUM
ST STEEL
EX EXISTING
WD STAIN-GRADE WOOD
PMD PAINT-GRADE WOOD
LUM LUMBER

RATINGS:
20 20 MINUTES
45 45 MINUTES
60 60 MINUTES
90 90 MINUTES

GLASS:
FSG FIRE RATED SAFETY GLAZING
ISG INSULATED SAFETY GLAZING
SSG SINGLE SAFETY GLAZING
IVG INSULATED VISION GLAZING
SVG SINGLE VISION GLAZING
SPG INSULATED SPANDREL PANEL
SG SPECIAL GLAZING

HARDWARE SET:

NOTE 1: PANIC HARDWARE, WEATHERSTRIP, CLOSER, EXTERIOR LEVER LOCKSET, THRESHOLD, HINGES.
NOTE 2: LEVER TYPE LOCK SET, HINGES, WALL BUMPER.
NOTE 3: LEVER TYPE LOCK SET, CLOSER, HINGES, WALL BUMPER.
NOTE 4: PANIC HARDWARE, CLOSER, LEVER LOCKSET, HINGES, WALL BUMPER.
NOTE 5: PANIC HARDWARE, WEATHERSTRIP.

FINISH SCHEDULE

Level	ROOM		FLOOR	BASE	WALLS		Ceiling Finish	REMARKS
	NUMBER	NAME			FINISH	FINISH		
FIRST FLOOR								
FIRST FLOOR	100	SALES	SCONC - 2	WB - 2	PNT	ACT		PAINT OPEN CEILING GRID BLACK, DUCTWORK, HOUSING, ETC TO BE PAINTED BLACK
FIRST FLOOR	100A	BREAK ROOM	SCONC - 2	WB - 2	PNT	ACT		
FIRST FLOOR	100B	TOILET	SCONC - 2	WB - 2	PNT / FRP	ACT		FRP TO 5'-0" AFF
FIRST FLOOR	101	MECHANICAL	SCONC - 1	WB - 2	PNT	EXPOSED		
FIRST FLOOR	102	ELECTRICAL	SCONC - 1	WB - 2	PNT	EXPOSED		
FIRST FLOOR	104	TOILET	SCONC - 2	WB - 2	PNT / FRP	ACT		FRP TO 5'-0" AFF
FIRST FLOOR	105	STORAGE	SCONC - 1 / 3	WB - 1	MTL	EXPOSED		SMOOTH FINISH WITHIN STORAGE CORRIDORS, 4'-0" DIAMOND PLATE CORNER GUARDS
FIRST FLOOR	106	JAN	SCONC - 2	WB - 2	PNT	ACT		
FIRST FLOOR	A	STAIR	-	WB - 2	PNT	EXPOSED		
FIRST FLOOR	A	ELEVATOR	-	-	-	-		
FIRST FLOOR	B	STAIR	-	WB - 2	PNT	EXPOSED		
FIRST FLOOR	B	ELEVATOR	-	-	-	-		
SECOND FLOOR								
SECOND FLOOR	200	STORAGE	SCONC - 1 / 3	WB - 1	MTL	EXPOSED		SMOOTH FINISH WITHIN STORAGE CORRIDORS, 4'-0" DIAMOND PLATE CORNER GUARDS
THIRD FLOOR								
THIRD FLOOR	300	STORAGE	SCONC - 1 / 3	WB - 1	MTL	EXPOSED		SMOOTH FINISH WITHIN STORAGE CORRIDORS, 4'-0" DIAMOND PLATE CORNER GUARDS
THIRD FLOOR	301	UTILITY	SCONC - 1	WB - 1	MTL	EXPOSED		SMOOTH FINISH WITHIN STORAGE CORRIDORS, 4'-0" DIAMOND PLATE CORNER GUARDS
FOURTH FLOOR								
FOURTH FLOOR	400	STORAGE	SCONC - 1 / 3	WB - 1	MTL	EXPOSED		SMOOTH FINISH WITHIN STORAGE CORRIDORS, 4'-0" DIAMOND PLATE CORNER GUARDS
FOURTH FLOOR	401	UTILITY	SCONC - 1	WB - 1	MTL	EXPOSED		SMOOTH FINISH WITHIN STORAGE CORRIDORS, 4'-0" DIAMOND PLATE CORNER GUARDS

FINISH SCHEDULE ABBREVIATIONS LEGEND:

ACT ACoustical CEILING TILE
AWP ACoustical WALL PANEL
CPT CARPET OR CARPET TILE
CT CERAMIC TILE
EX EXISTING
EXP EXPOSED
FARF FLUID APPLIED RESINOUS FLOORING
FRP FIBERGLASS REINFORCED POLYESTER
LIN LINOLEUM
LVT LUXURY VINYL TILE
PNT PAINT
QT QUARRY TILE
RB RESILIENT BASE
RT RUBBER TILE
SCONC SEALED CONCRETE
SPNT SPECIAL PAINT
SV SHEET VINYL
TZ TERRAZZO
VCT VINYL COMPOSITE TILE
VWC VINYL WALL COVERING
WD WOOD
WF WOOD FLOORING
WOM WALK OFF MATERIAL

ACT ARMSTRONG, MODEL #584, CIRRUS SQUARE LAY-IN AND ANGULAR REGULAR TILE, COLOR: WHITE, SIZE: 24"x24"

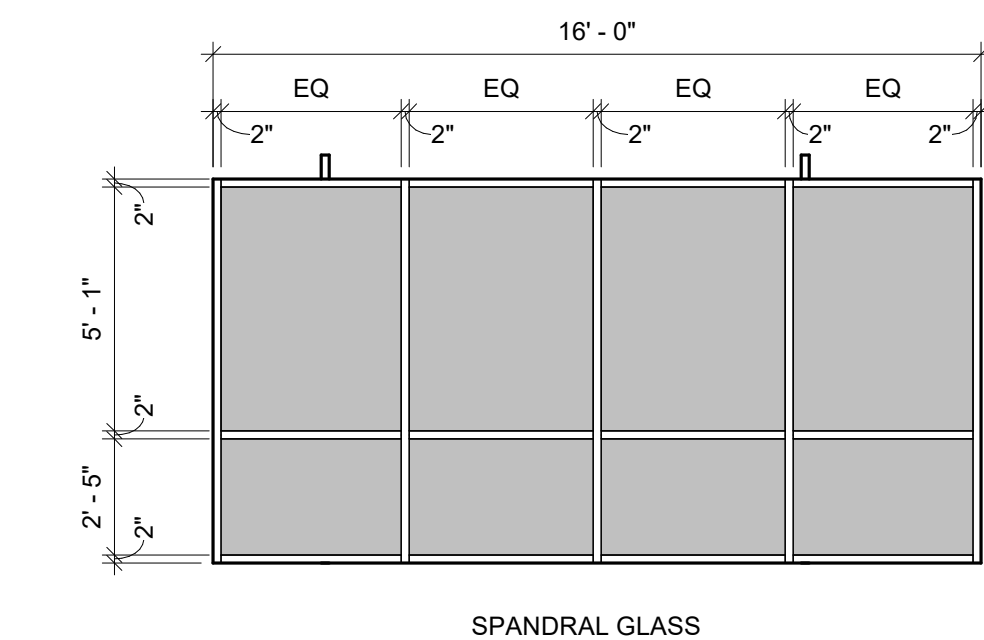
WB-1 12" DIAMOND PLATE BASE

WB-2 4" VINYL WALL BASE

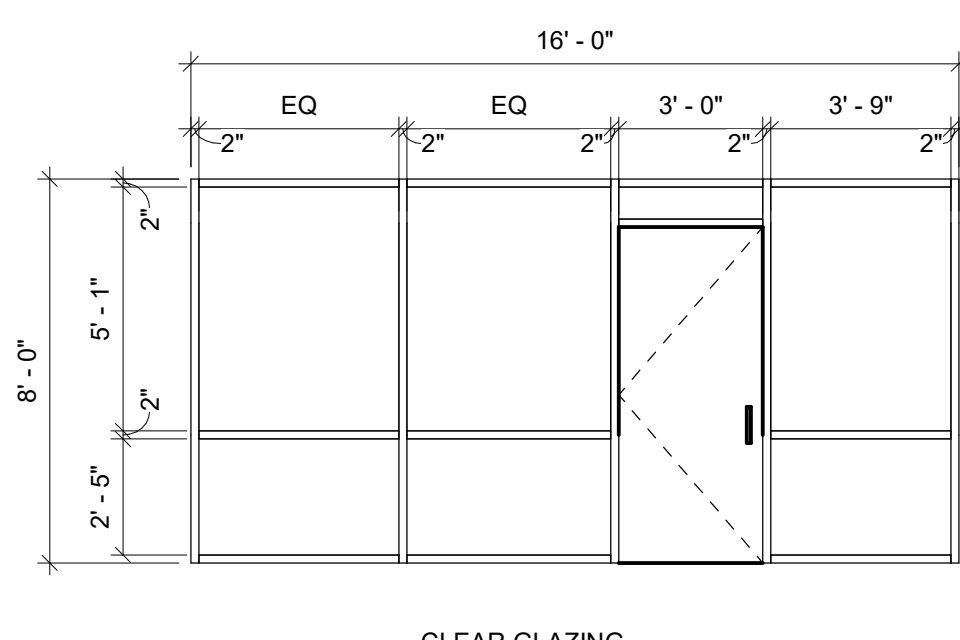
SCONC-1 SEALED CONCRETE, SEAL 2 COATS OF FINISH JOB 35, (WITHIN STORAGE UNITS)

SCONC-2 STAIN CONCRETE BLACK W/ CLEAR SEALANT

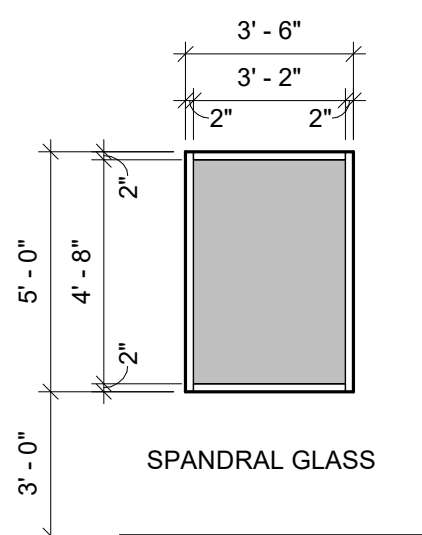
SCONC-3 CORRIDORS (WITHIN NEW BUILDING ADDITIONS) BETWEEN STORAGE UNITS TO BE CONCRETE W/ SATIN FINISH AND CLEAR SEALANT



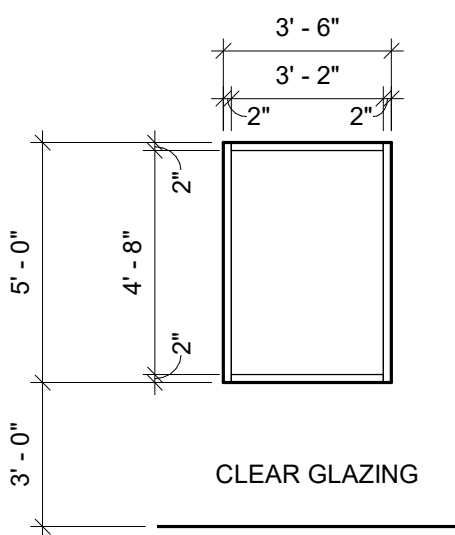
1 S1
A-601 SCALE: 1/4" = 1'-0"



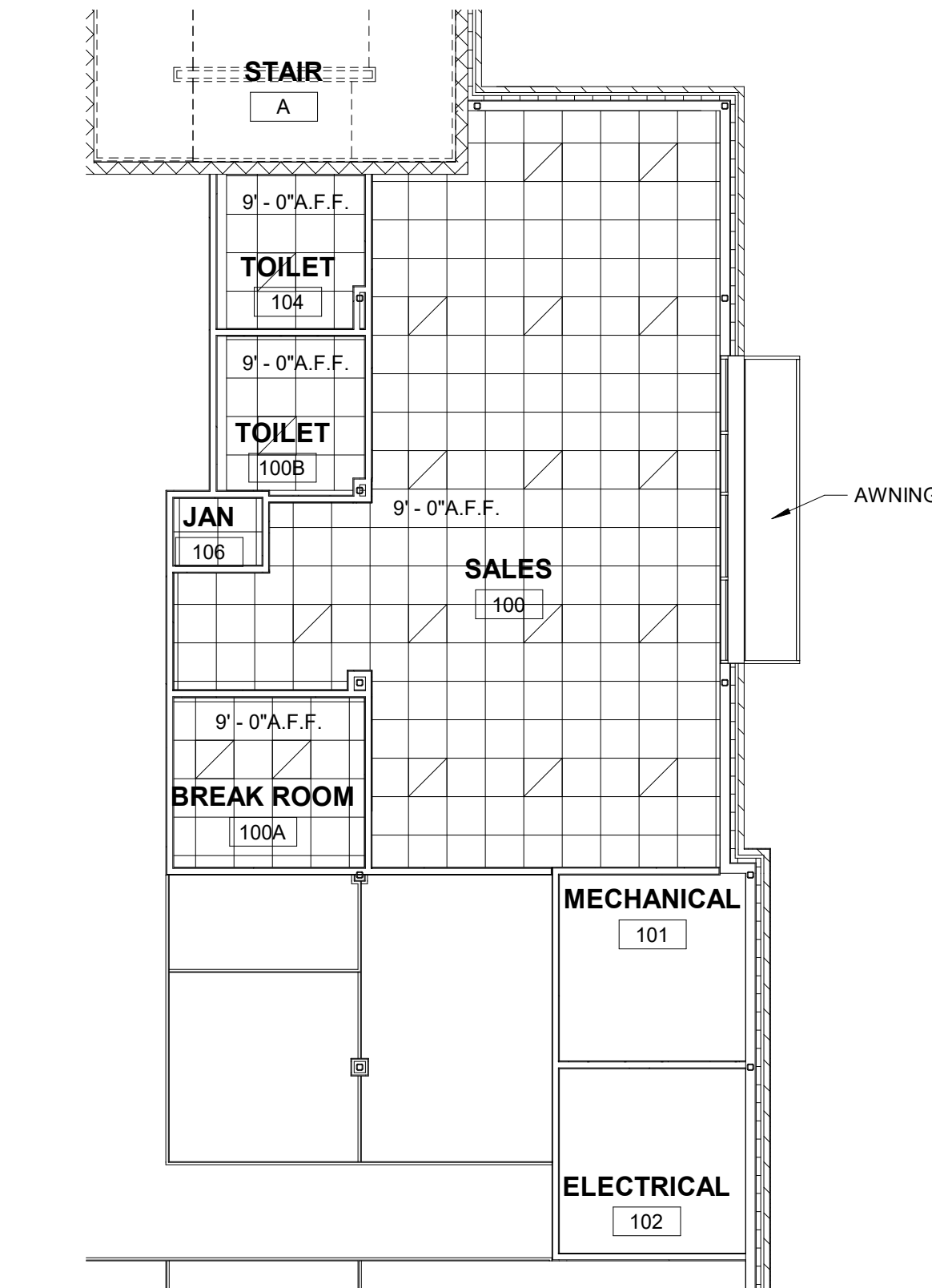
2 S2
A-601 SCALE: 1/4" = 1'-0"



3 S3
A-601 SCALE: 1/4" = 1'-0"



4 S4
A-601 SCALE: 1/4" = 1'-0"



6 FIRST FLOOR REFLECTED CEILING PLAN
A-601 SCALE: 1/8" = 1'-0"

REVISIONS

No.	Date	Description
1	7/1/2022	ISSUED FOR PERMIT

CONSULTANT

SAAarchitects

Client centered • Smart solutions

600 North Hanley Street, Suite 150
T - 717.843.3200 F - 717.690.0205
www.SAAarchitects.com

DRAWING TITLE

SCHEDULES / REFLECTED CEILING PLAN

POUGHKEEPSIE NY STORAGE

DIAMOND POINT DEVELOPMENT

1989 SOUTH ROAD POUGHKEEPSIE, NEW YORK 12601
DUTCHESS COUNTY

STATE OF NEW YORK

SEAL

FILE NO:

22-082

DATE:

7/1/2022

SCALE:

AS NOTED

DRAWN BY:

DRAWING NO.:

A-601