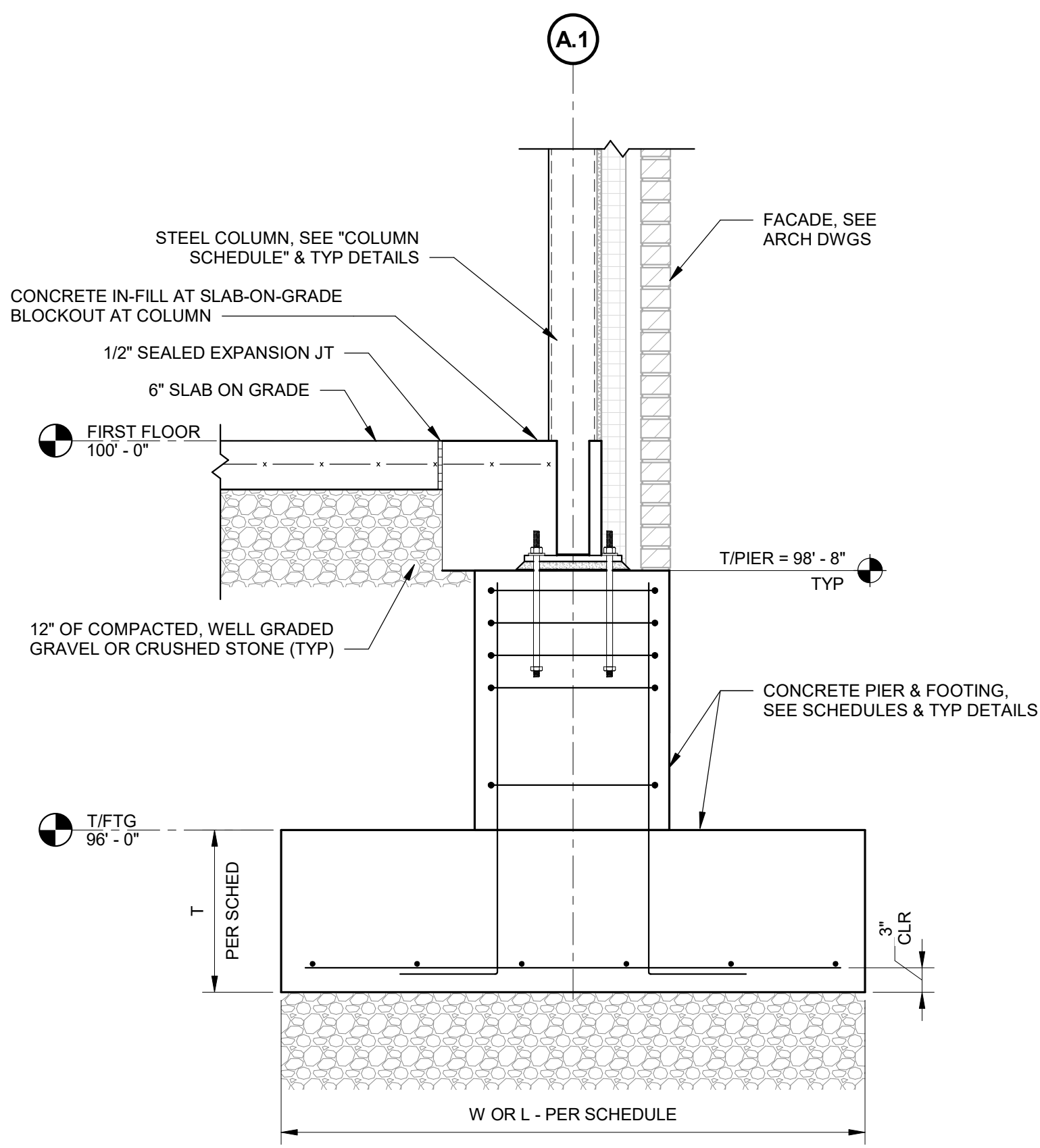
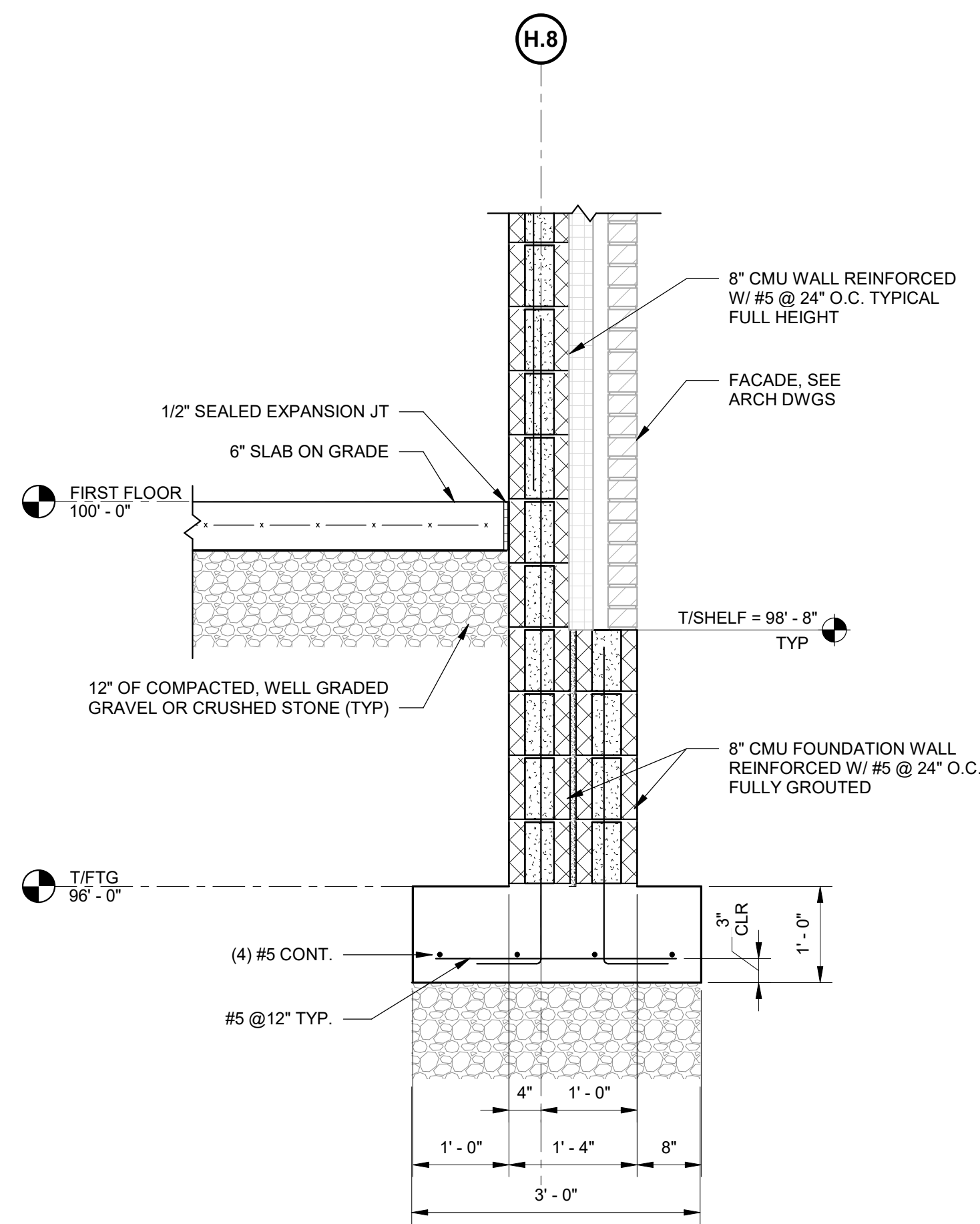


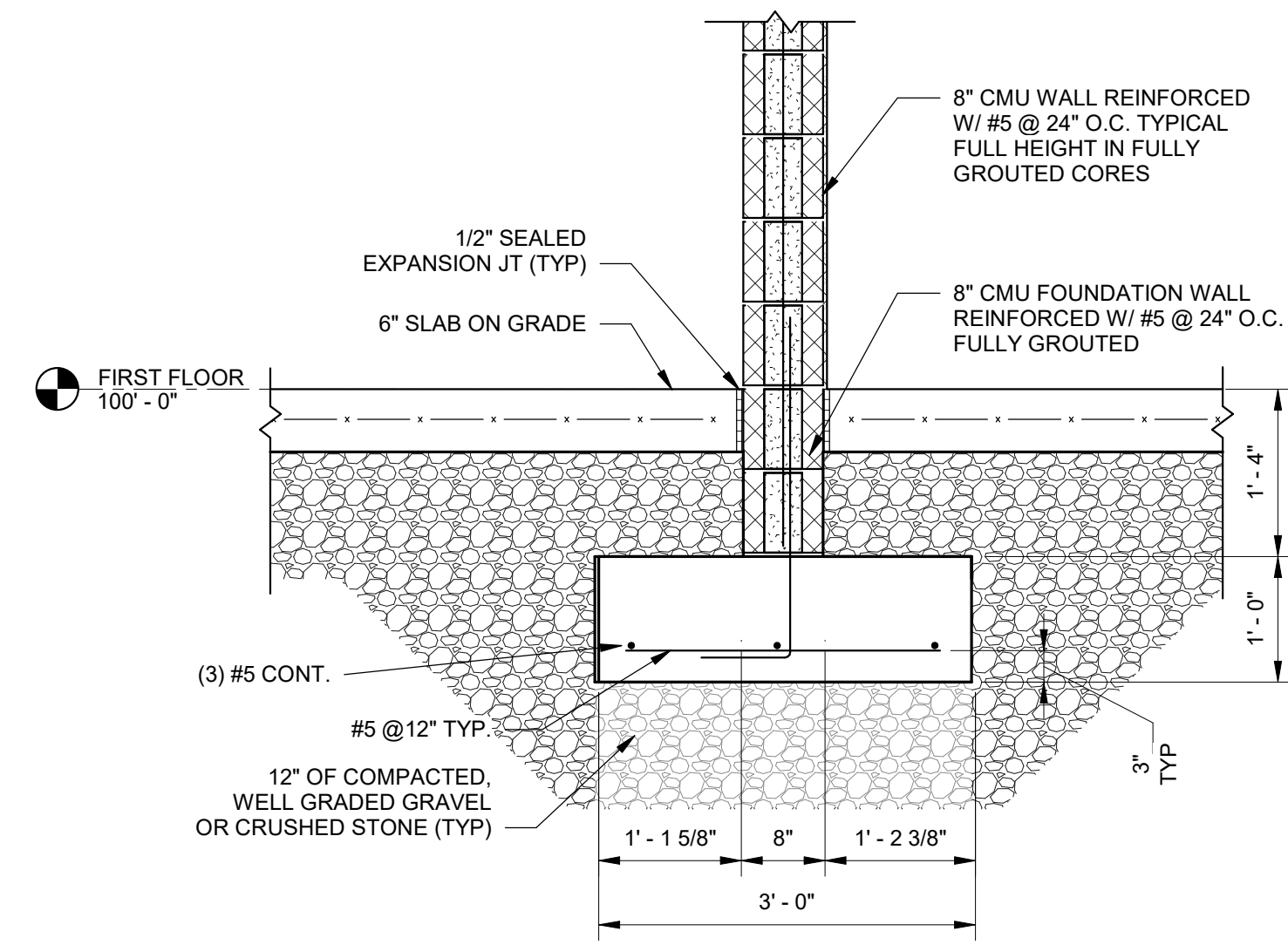
1 TYPICAL FOUNDATION SECTION
SCALE: 3/4" = 1'-0"



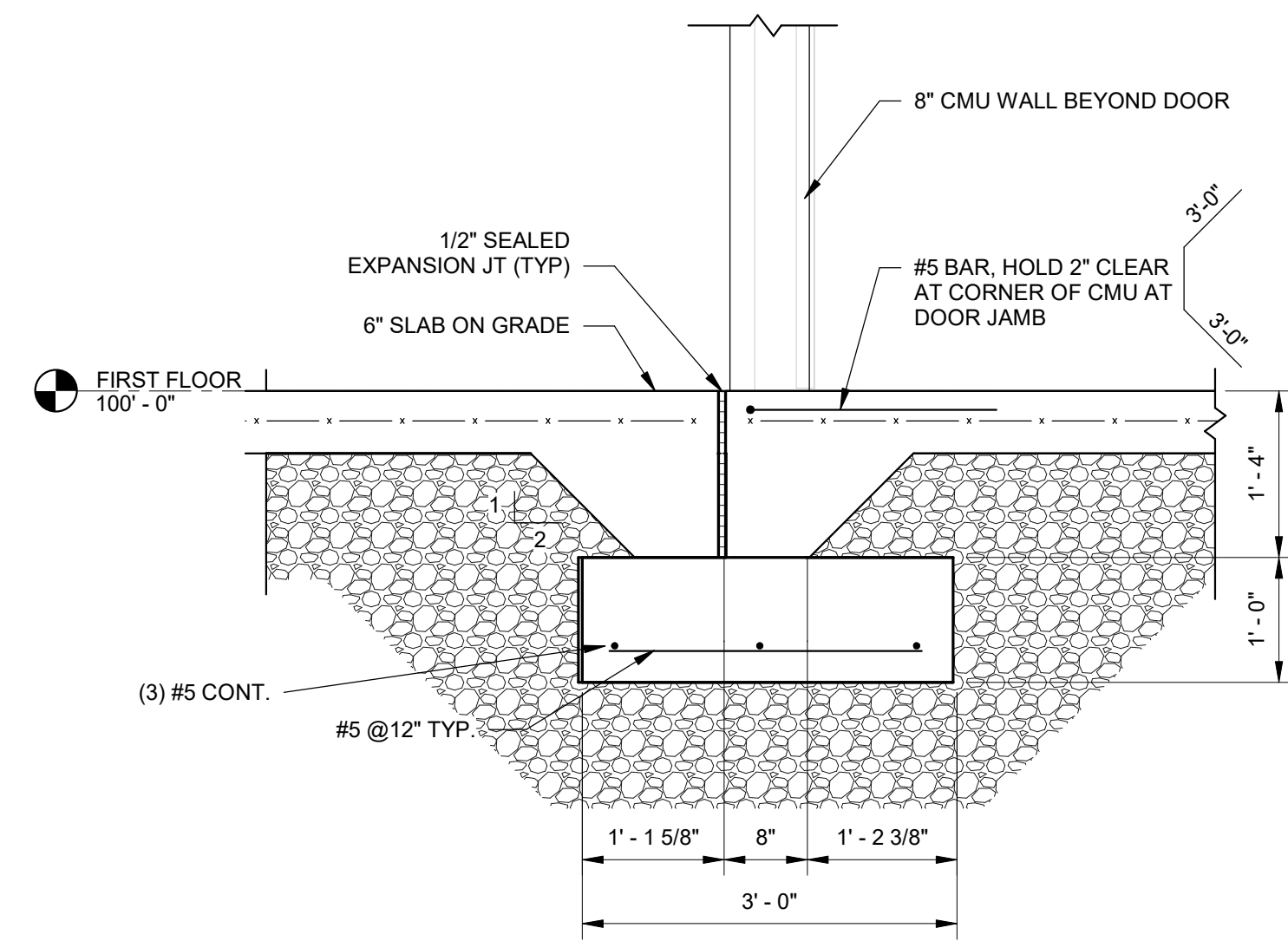
2 TYPICAL FOUNDATION SECTION AT COLUMN
SCALE: 3/4" = 1'-0"



3 TYPICAL FOUNDATION SECTION AT STAIR TOWER
SCALE: 3/4" = 1'-0"



4 TYPICAL INTERIOR FOUNDATION SECTION AT STAIR TOWER
SCALE: 3/4" = 1'-0"



5 TYPICAL INTERIOR FOUNDATION SECTION AT STAIR TOWER DOOR
SCALE: 3/4" = 1'-0"

| REVISIONS | DATE | DESCRIPTION |
|-----------|----------|-------------------|
| 1 | 7/7/2022 | ISSUED FOR PERMIT |

ENGINEERS
PLANNERS
SCIENTISTS
CONSTRUCTION MANAGERS
KCI
TECHNOLOGIES
5001 LOURIE DRIVE, SUITE 201
MILFORD, PA 17045
PHONE: 717.691.1340
WWW.KCI.COM

SAA architects
Client centered • Smart solutions
600 North Hanley Street, Suite 150
York, PA 17404
T - 717.843.3200 F - 717.698.0205
WWW.SAAarchitects.com

TYPICAL FOUNDATION SECTIONS AND DETAILS
POUGHKEEPSIE NY STORAGE
DIAMOND POINT DEVELOPMENT
1899 SOUTH ROAD, POUGHKEEPSIE, NEW YORK 12601



FILE NO: 28220745
DATE: 07/01/2022
SCALE: AS NOTED
DRAWN BY: CTX
DRAWING NO: S-301