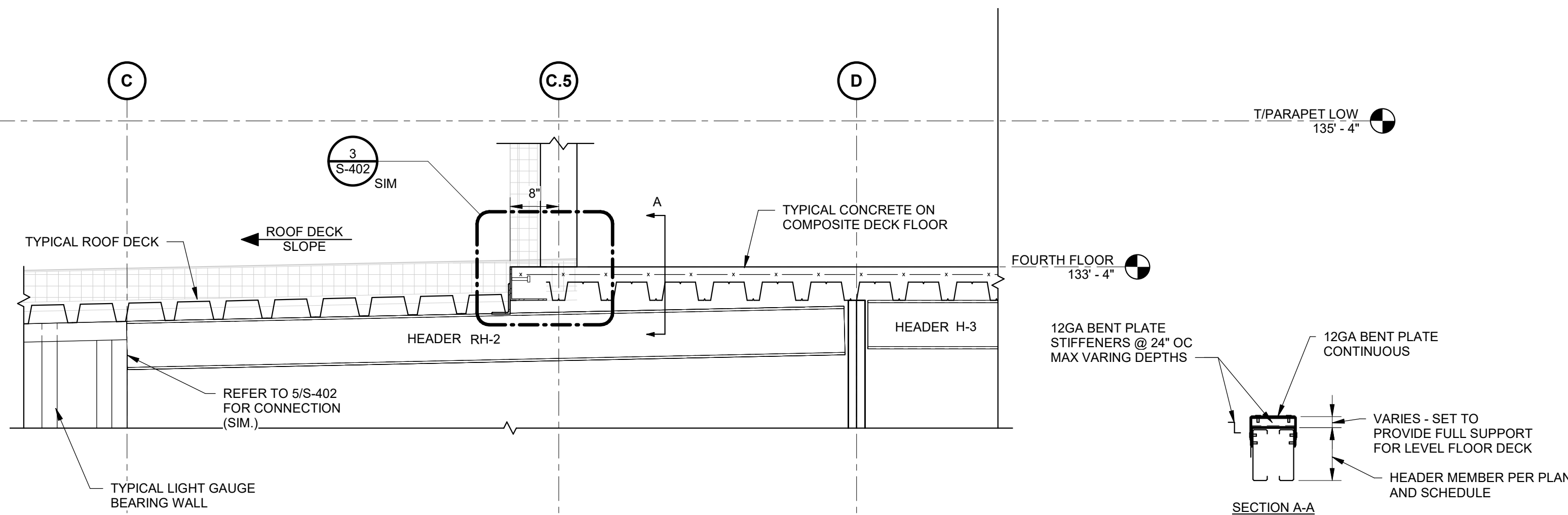
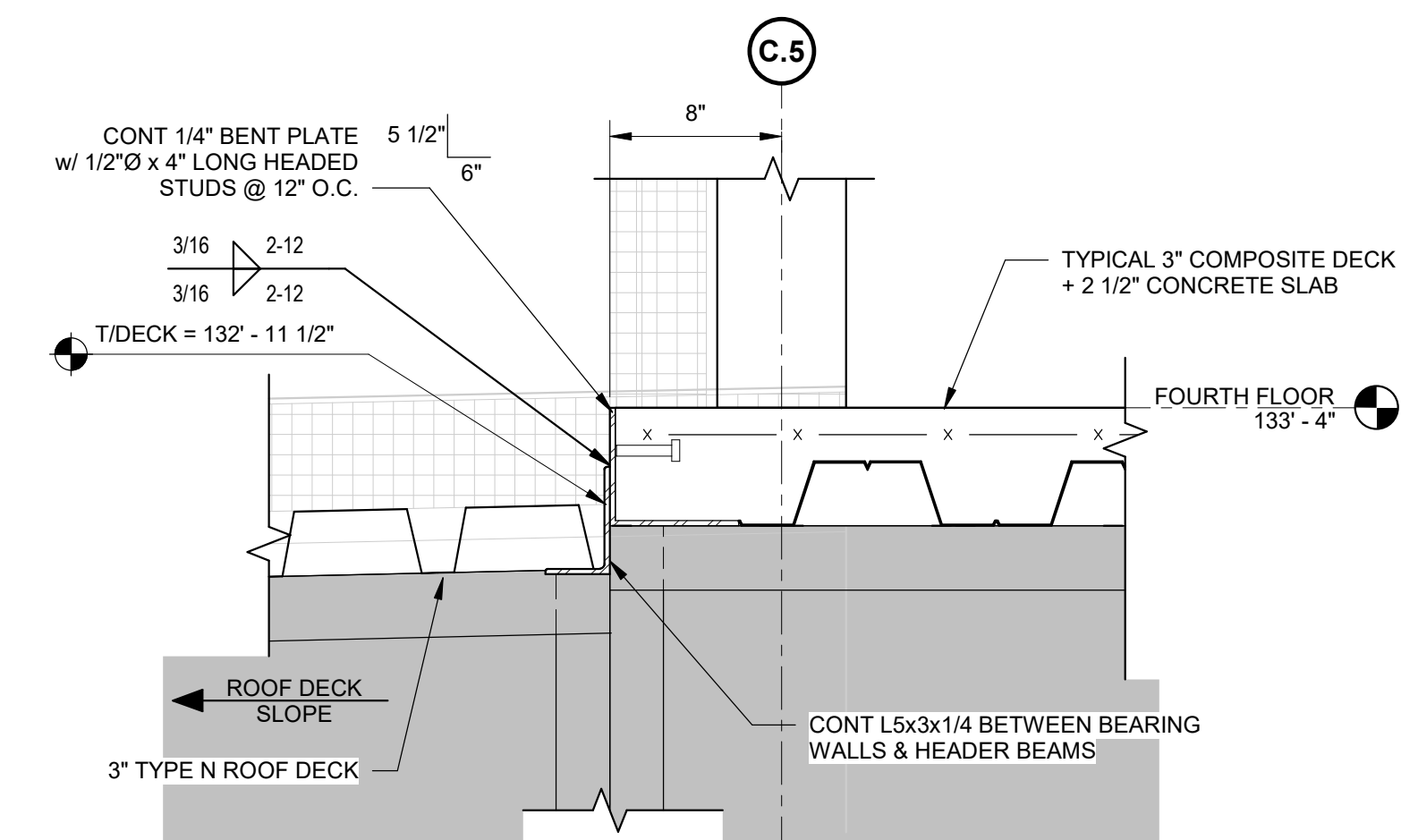


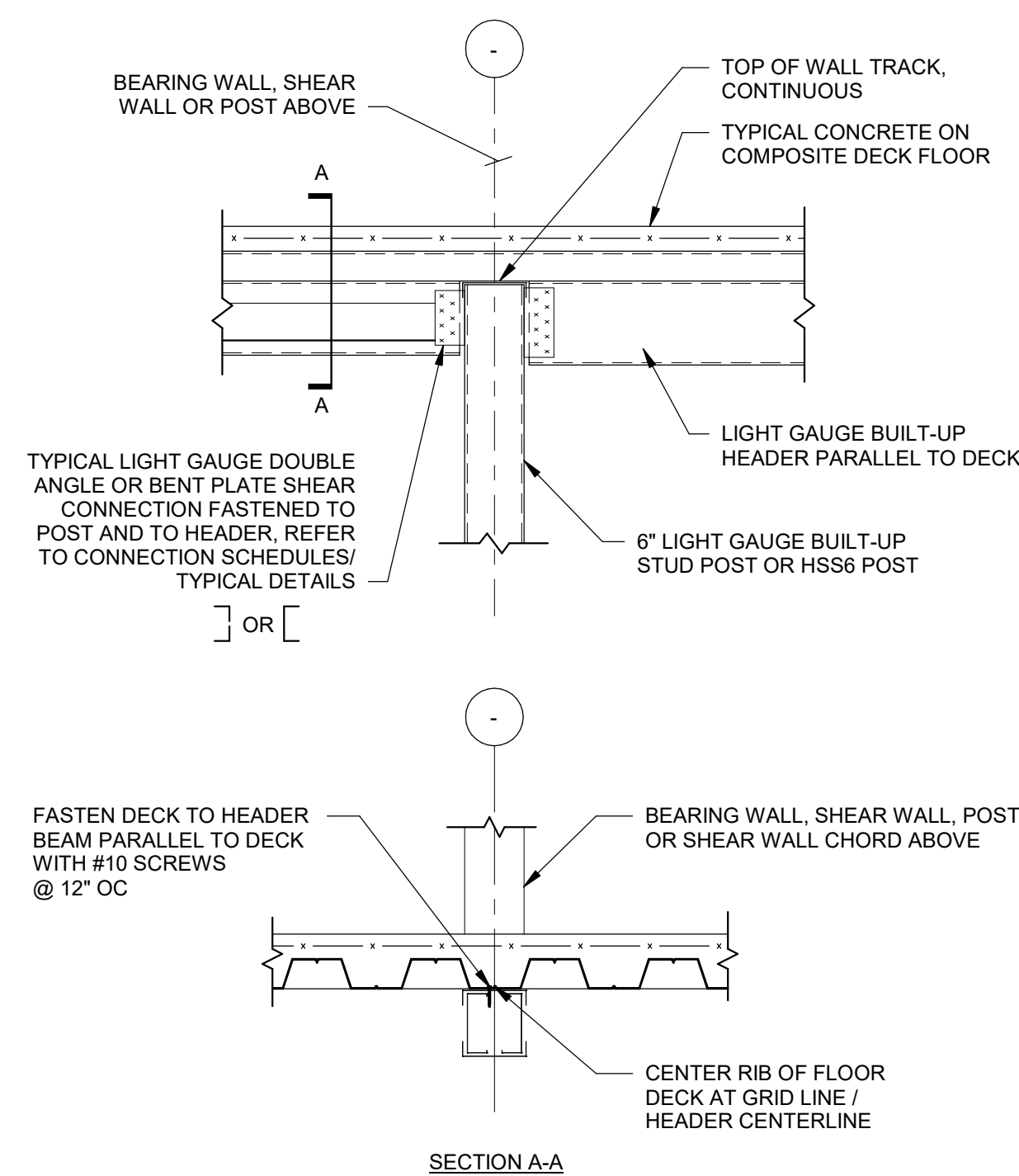
**1 TYPICAL ROOF DECK SECTION AT BEARING WALL**  
SCALE: 3/4" = 1'-0"



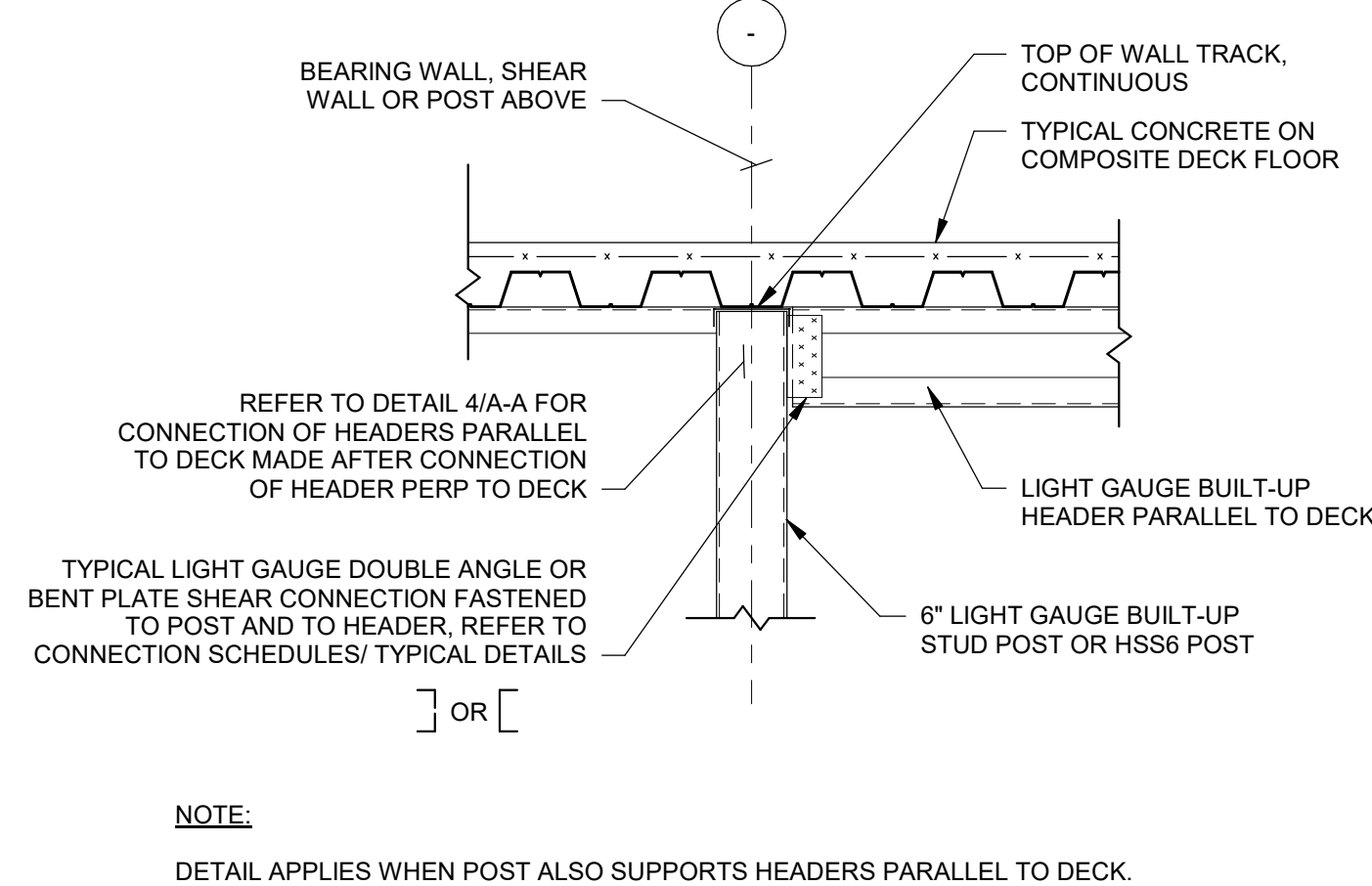
**2 TYPICAL ROOF DECK SECTION AT WALL HEADERS**  
SCALE: 3/4" = 1'-0"



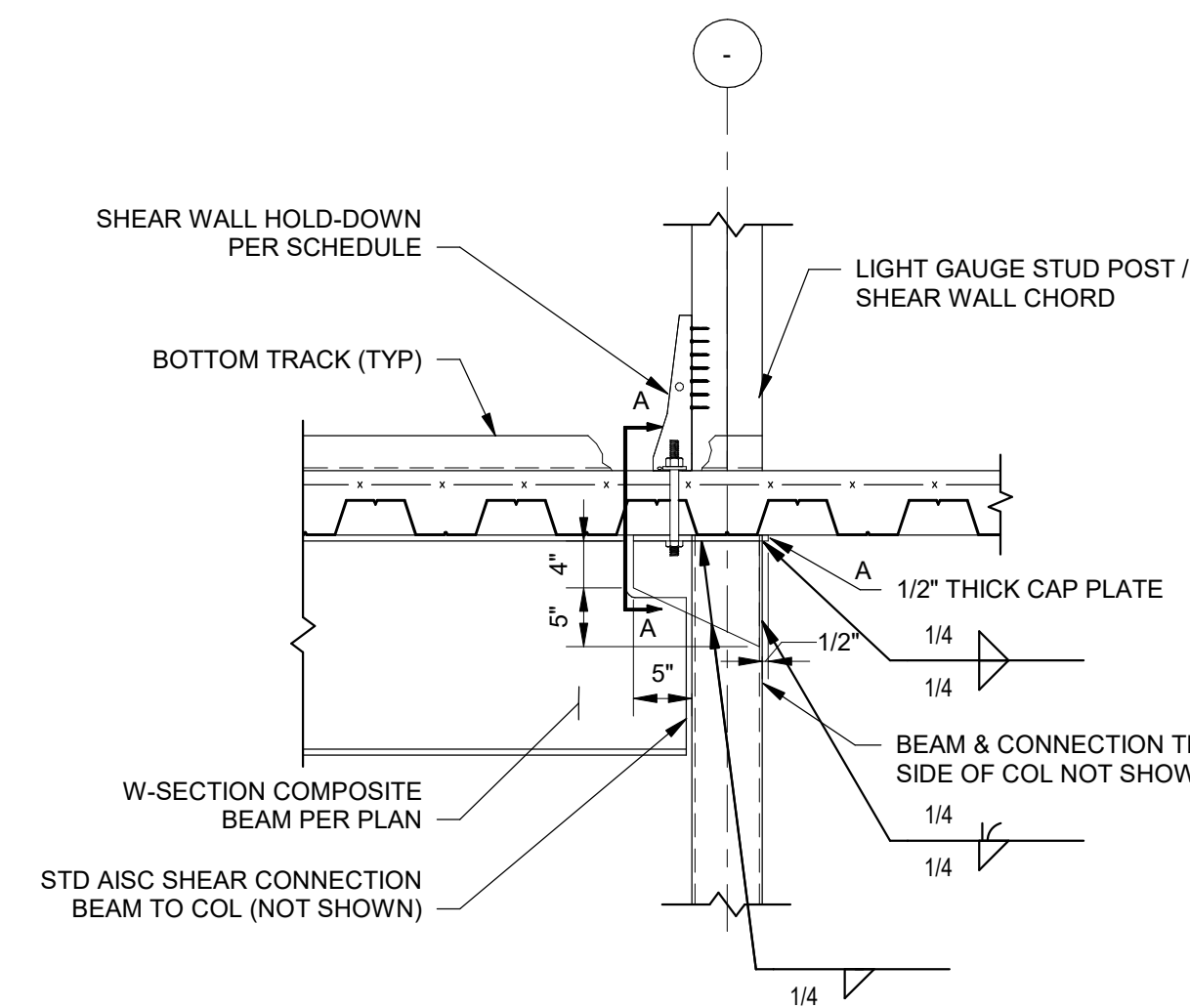
**3 ENLARGED ROOF DECK EDGE DETAIL**  
SCALE: 1 1/2" = 1'-0"



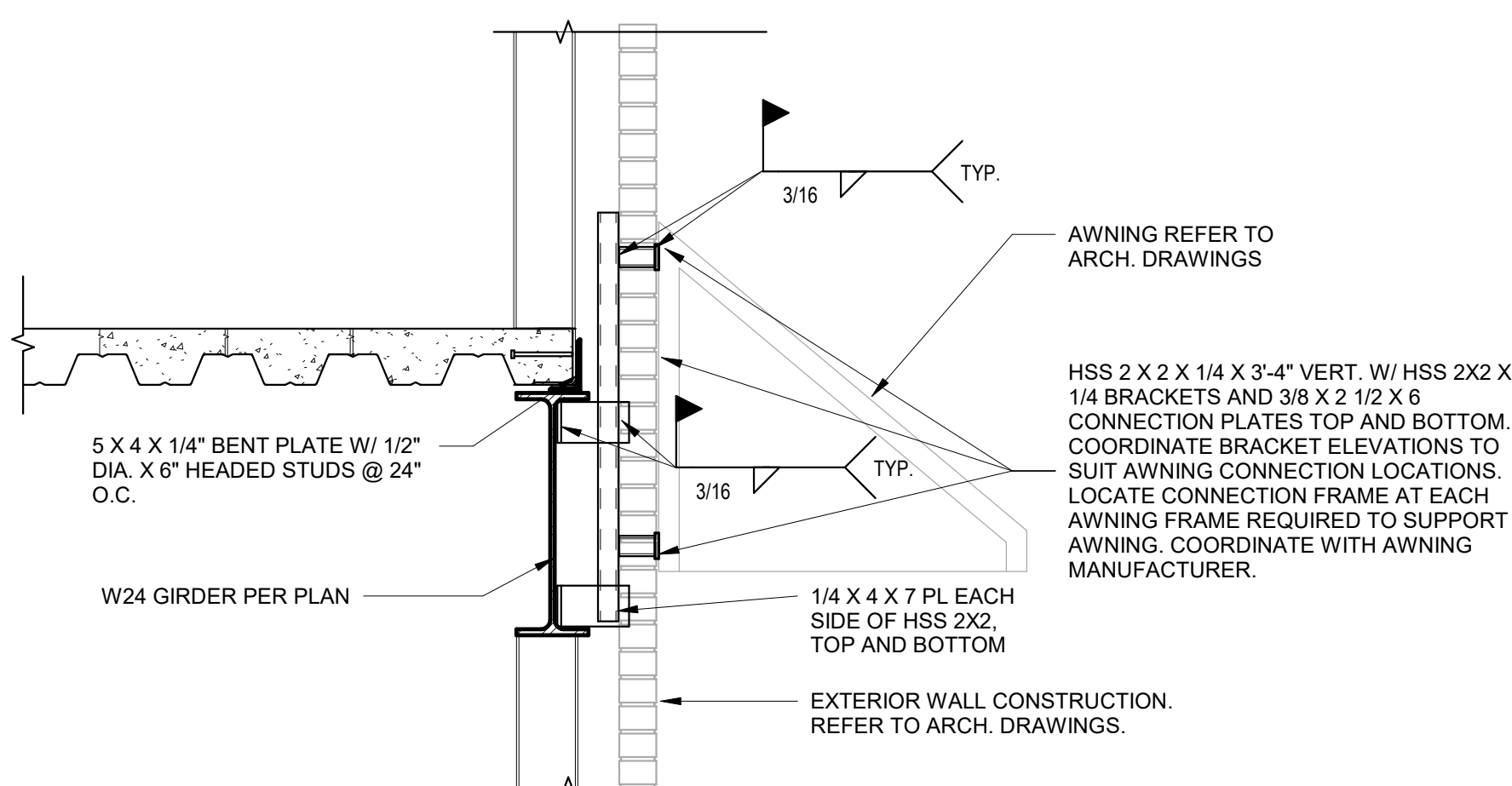
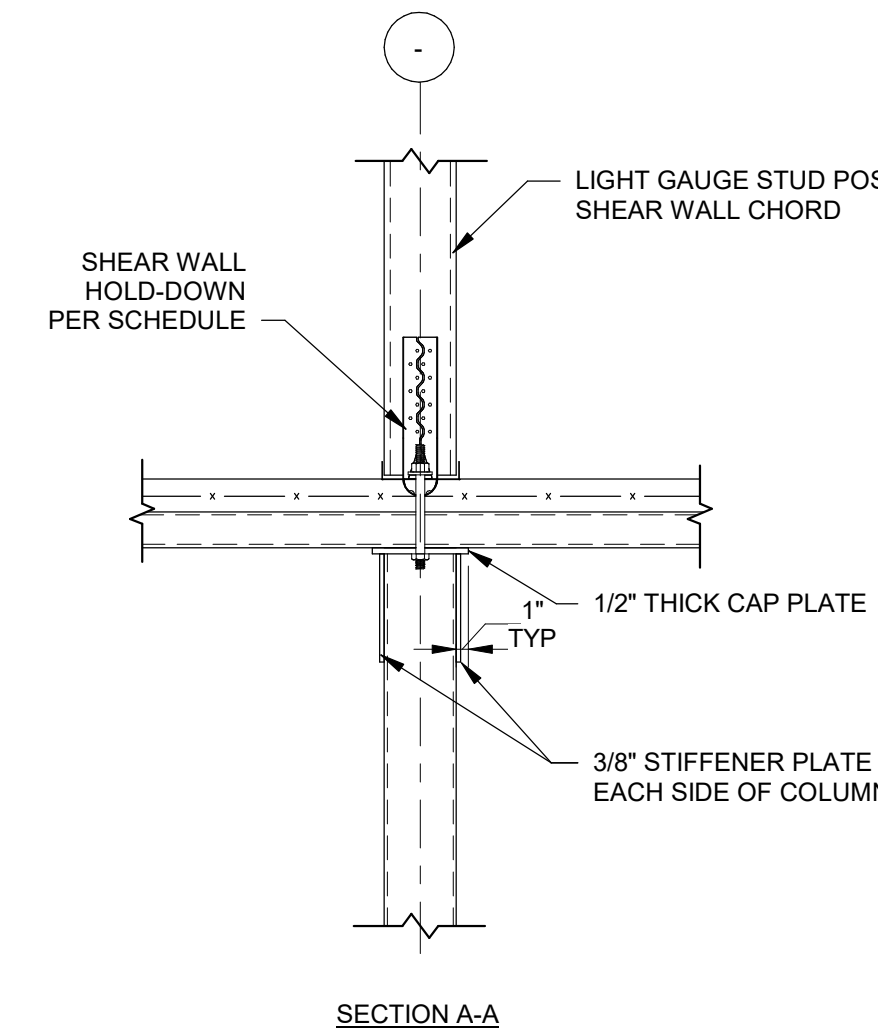
**4 TYPICAL CONNECTION FOR HEADERS PARALLEL WITH DECK**  
SCALE: 3/4" = 1'-0"



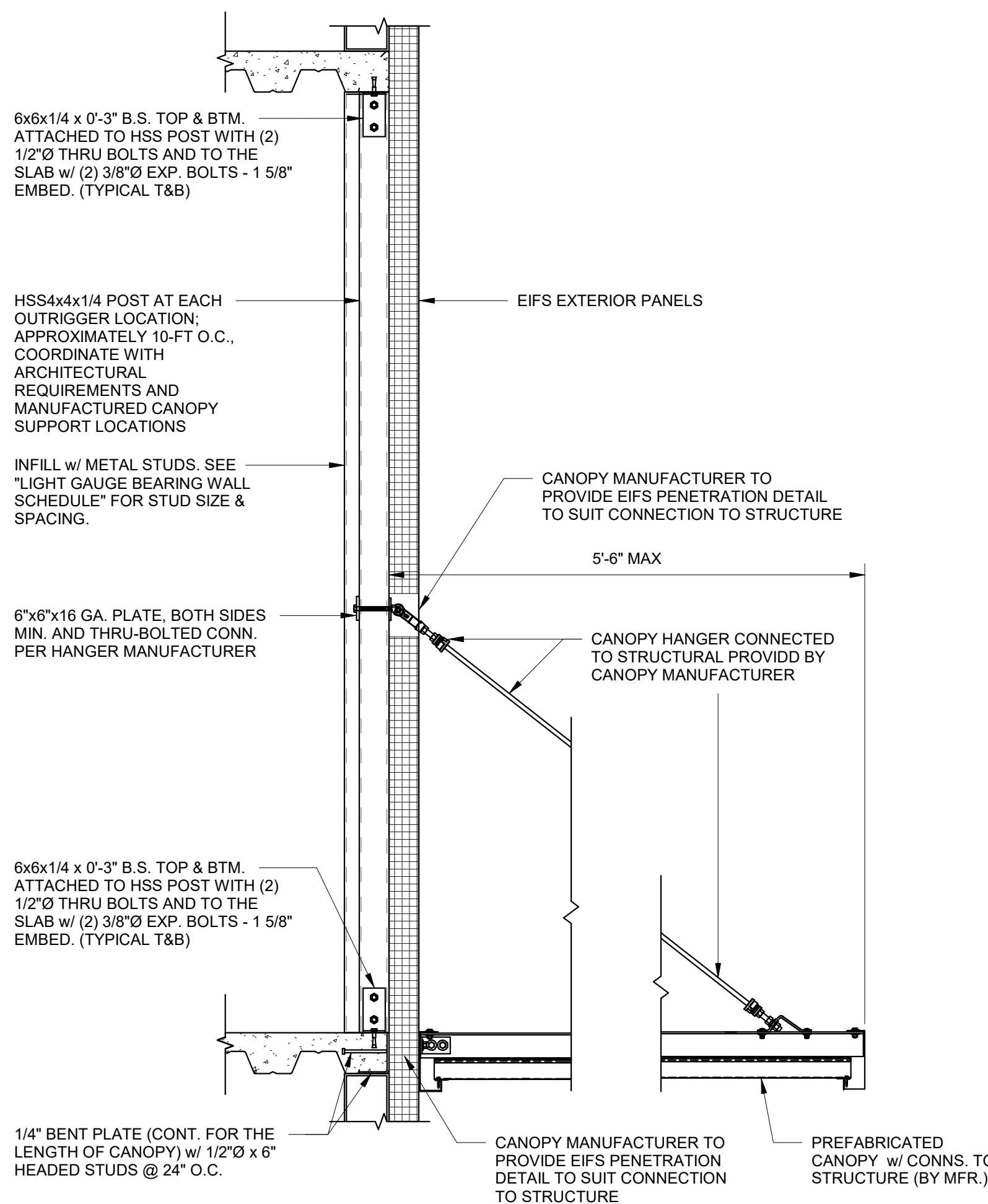
**5 TYPICAL CONNECTION FOR HEADERS PERP WITH DECK**  
SCALE: 3/4" = 1'-0"



**6 TYPICAL SECOND FLOOR HOLD-DOWN DETAIL**  
SCALE: 3/4" = 1'-0"



**7 AWNING SECTION**  
SCALE: 3/4" = 1'-0"



**8 PRE-MANUFACTURED CANOPY SECTION**  
SCALE: 3/4" = 1'-0"

<b>REVISIONS</b> No. 1 Date 7/7/2022 Description ISSUED FOR PERMIT	
<b>ENGINEERS</b> PLANNERS SCIENTISTS <b>CONSTRUCTION MANAGERS</b> 5001 LOURIE DRIVE, SUITE 201 MILLERSVILLE, MD 21105 PHONE: 717-691-1340 www.kci.com	
<b>KCI TECHNOLOGIES</b>	
<b>SAA architects</b> client centered • smart solutions 600 North Hanley Street, Suite 950 York, PA 17404 T - 717-843-3200 F - 717-698-0205 www.SAAarchitects.com	
<b>TYPICAL FRAMING SECTIONS AND DETAILS</b> POUGHKEEPSIE NY STORAGE DIAMOND POINT DEVELOPMENT 1998 SOUTH ROAD, POUGHKEEPSIE, NEW YORK 12601	
DRAWING TITLE 08123-1 07/01/2022	
FILE NO: 28220745 DATE: 07/01/2022 SCALE: AS NOTED DRAWN BY: CTK CHECKED BY:	
DRAWING NO: <b>S-402</b>	