

Re-Bid Pre-Bid Addendum #1

Response to RFI:

1. None.

Revisions to Drawings:

2. **Add** Drawing E-5 Fire Alarm Plans.

Revisions to Project Manual:

3. **Revise** Sections 012300 'ALTERNATES'.
- 4.

END OF ADDENDUM 1

SECTION 012300 - ALTERNATES

PART 1 - GENERAL

1.1 RELATED DOCUMENTS

- A. Drawings and general provisions of the Contract, including General and Special Conditions and other Division 01 Specification Sections, apply to this Section.

1.2 SUMMARY

- A. This Section includes administrative and procedural requirements for alternates.

1.3 DEFINITIONS

- A. Alternate: An amount proposed by bidders and stated on the Bid Form for certain work defined in the Bidding Requirements that may be added to or deducted from the Base Bid amount if Owner decides to accept a corresponding change either in the amount of construction to be completed or in the products, materials, equipment, systems, or installation methods described in the Contract Documents.
 - 1. The cost or credit for each alternate is the net addition to or deduction from the Contract Sum to incorporate alternate into the Work. No other adjustments are made to the Contract Sum.

1.4 PROCEDURES

- A. Coordination: Modify or adjust affected adjacent work as necessary to completely integrate work of the alternate into Project.
 - 1. Include as part of each alternate, miscellaneous devices, accessory objects, and similar items incidental to or required for a complete installation whether or not indicated as part of alternate.
- B. Notification: Immediately following award of the Contract, notify each party involved, in writing, of the status of each alternate. Indicate if alternates have been accepted, rejected, or deferred for later consideration. Include a complete description of negotiated modifications to alternates.
- C. Execute accepted alternates under the same conditions as other work of the Contract.
- D. Schedule: A Schedule of Alternates is included at the end of this Section identifying each Alternate by number and describes basic changes to be incorporated into the Work only when that Alternate is made part of the Work by specific provision in the Owner/Contractor Agreement. Specification Sections referenced in schedule contain requirements for materials necessary to achieve the work described under each alternate.

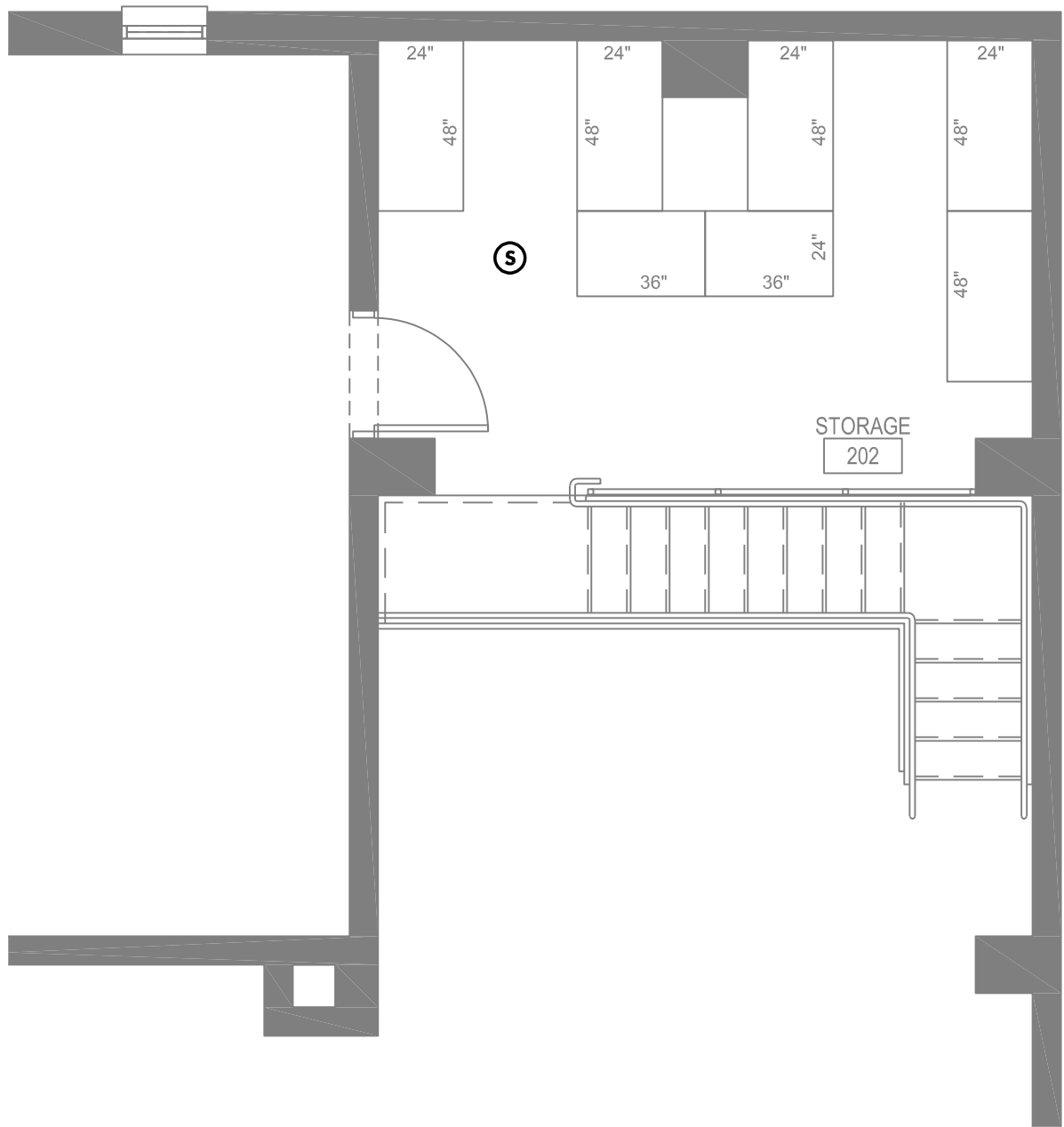
PART 2 - PRODUCTS (Not Used)

PART 3 - SCHEDULE OF ALTERNATES

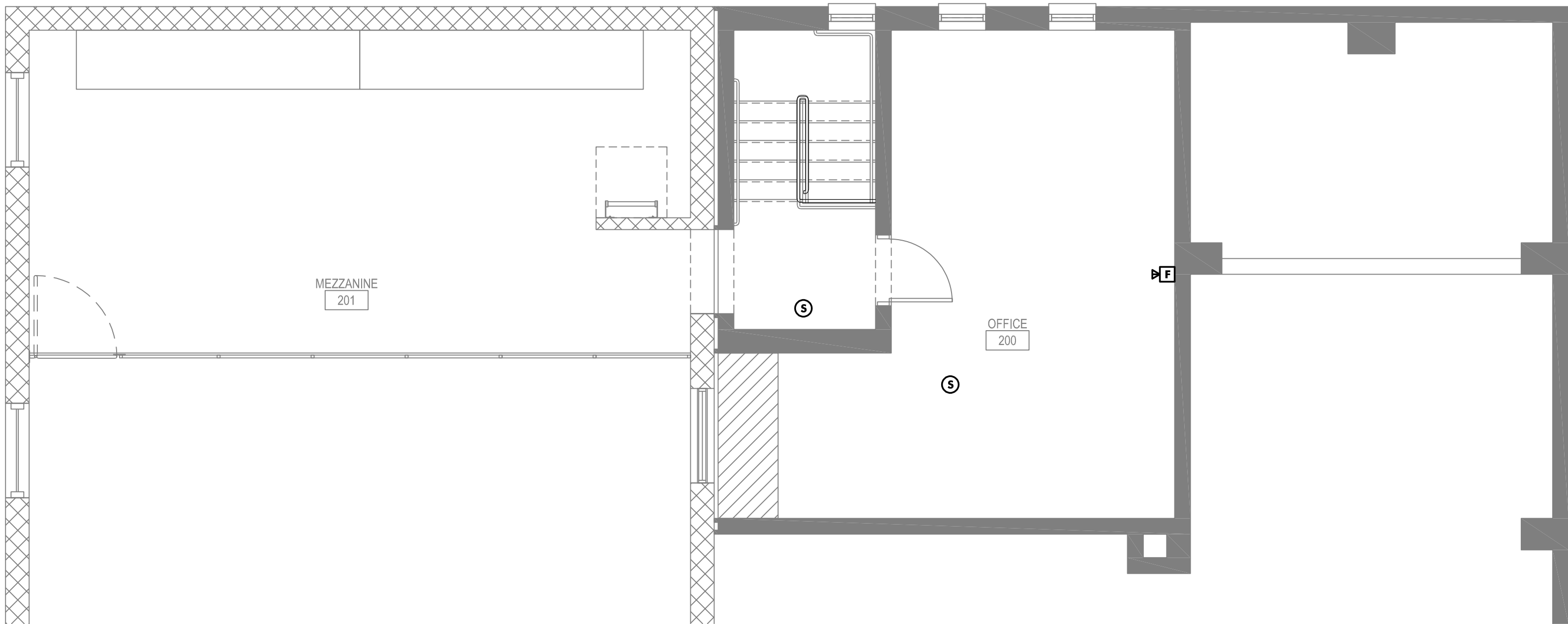
- A. Alternate 01: Mezzanine at Existing Building
 - 1. Alternate shall include all material and labor to construct mezzanine including but not limited to:
 - a. Steel stair and rails, demolition of existing slab and construction of new at lower elevation, concrete second floor, Door 202.2, and second floor shelving. Base scope shall include probes/exploration for subsurface obstructions.

END OF SECTION 012300

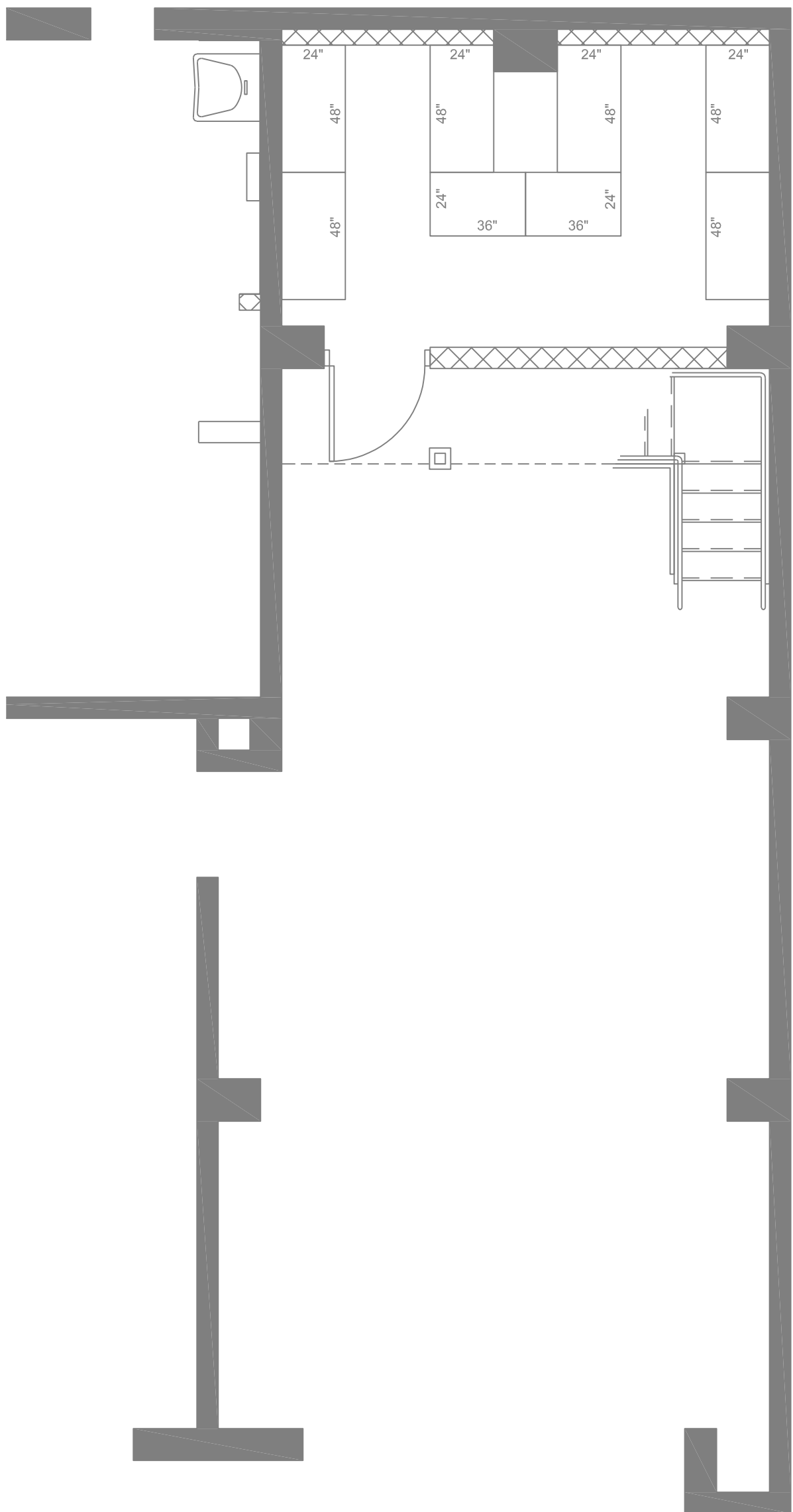
PAGE INTENTIONALLY BLANK



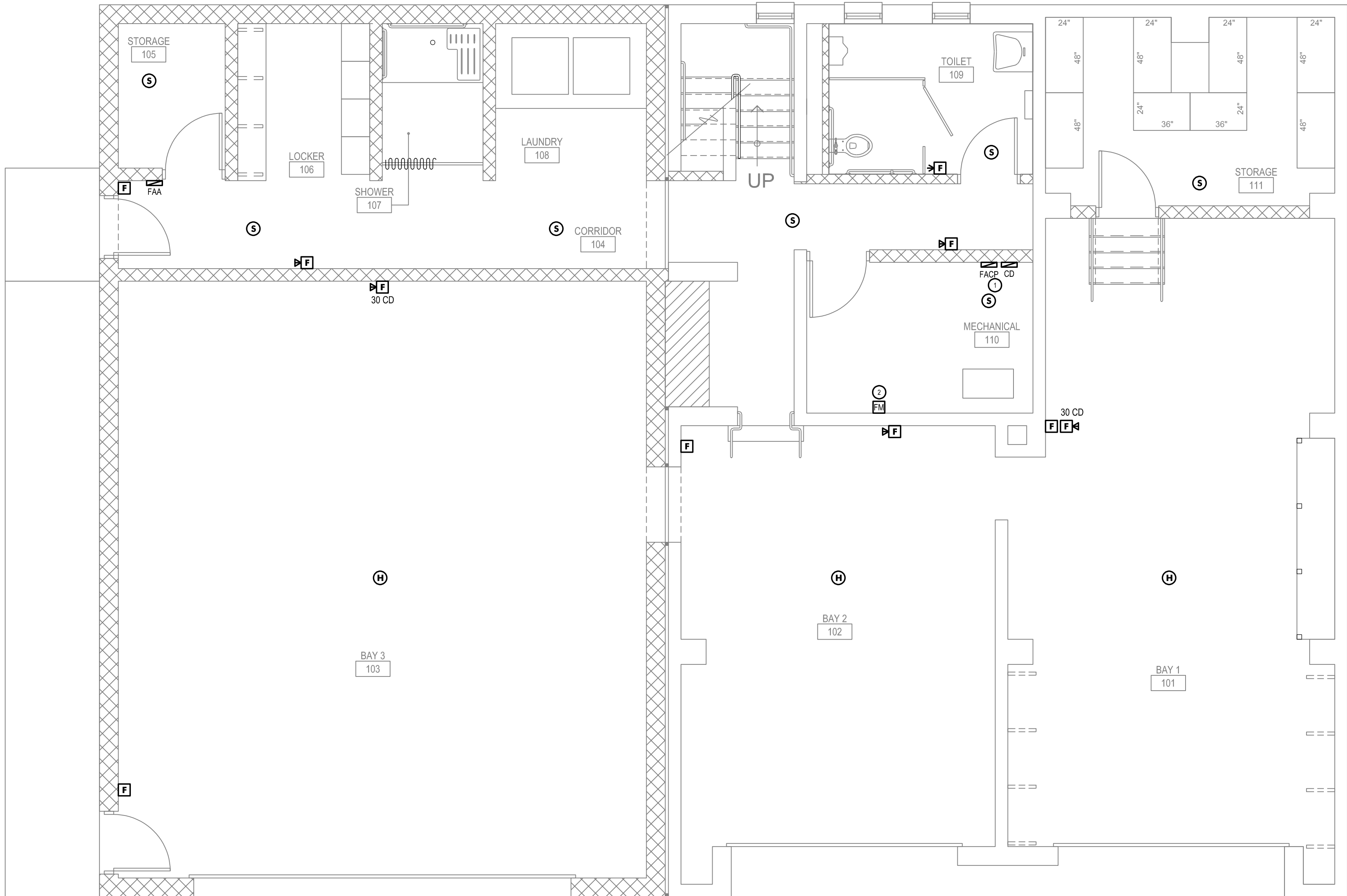
MEZZANINE FIRE ALARM PLAN - ALTERNATE 4
1/4" = 1'-0"



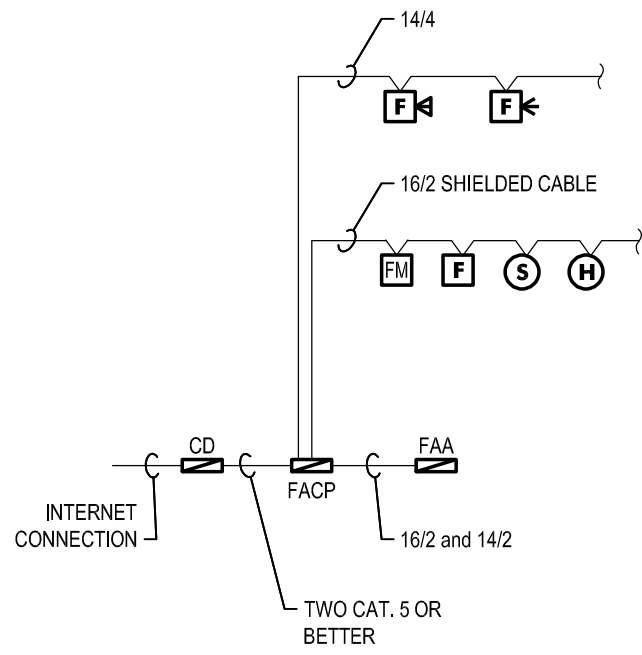
MEZZANINE FIRE ALARM PLAN - BASE BID 2
1/4" = 1'-0"



FIRST FLOOR FIRE ALARM PLAN - ALTERNATE 3
1/4" = 1'-0"



FIRST FLOOR FIRE ALARM PLAN - BASE BID 1
1/4" = 1'-0"



FIRE ALARM LEGEND

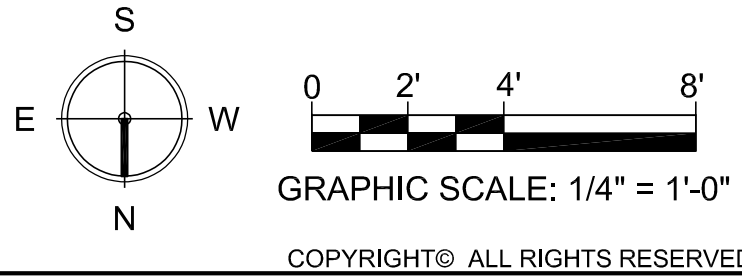
ALL FIRE ALARM DEVICES ARE FURNISHED & PROGRAMMED BY THE OWNER THROUGH PERFECTION DETECTION SECURITY SYSTEMS, INC. CONTACT TONY ARINIELLO AT (914) 576-8563.

CONTRACTOR TO PROVIDE ALL WIRING, INSTALL AND TERMINATE ALL FIRE ALARM DEVICES.

- FAA FIRE ALARM ANNUNCIATOR
-FIRELITE/HONEYWELL #ANN-80
- FACP FIRE ALARM CONTROL PANEL
-FIRELITE/HONEYWELL #ES200x
- F FIRE ALARM MANUAL STATION - (48" AFF)
-FIRELITE/HONEYWELL #BG12
- F FIRE ALARM STROBE (WALL/CEILING MOUNT)
15 CANDELA UNLESS OTHERWISE NOTED
-SYSTEM SENSOR #SRL
- F FIRE ALARM HORN/STROBE (WALL MOUNT)
15 CANDELA UNLESS OTHERWISE NOTED
-SYSTEM SENSOR #P2RL
- S AREA TYPE SMOKE DETECTOR (ADDRESSABLE TYPE)
-FIRELITE/HONEYWELL #SD365 WITH B110LP BASE
- H HEAT DETECTOR (ADDRESSABLE TYPE)
-FIRELITE/HONEYWELL #H365 WITH B110LP BASE
- FM MONITOR MODULE
-FIRELITE/HONEYWELL #MM300
- CD FIRE COMMUNICATOR CELLULAR
-ANYNET/UPLINK #FD1000 OR EQUAL

FIRE ALARM NOTES

- CIRCUIT TO PANEL PP1 CIRCUIT 28. REFER TO DRAWING E-3 FOR PANEL LOCATION.
- NEW FIRE ALARM MONITOR MODULE TO MONITOR THE CARBON MONOXIDE CONTROL PANEL. REFER TO DRAWING E-3 FOR CO DETECTOR AND PANEL INFORMATION.



Project Title			

No	Date	Revision	By
4			
3			
2			
1			

Drawn By: ks
Checked By: ks
BDS Proj. #: 21-01
Date: June 3, 2022

Sheet Title
FIRE ALARM PLANS

Sheet No.
E-5
CONSTRUCTION DOCUMENTS