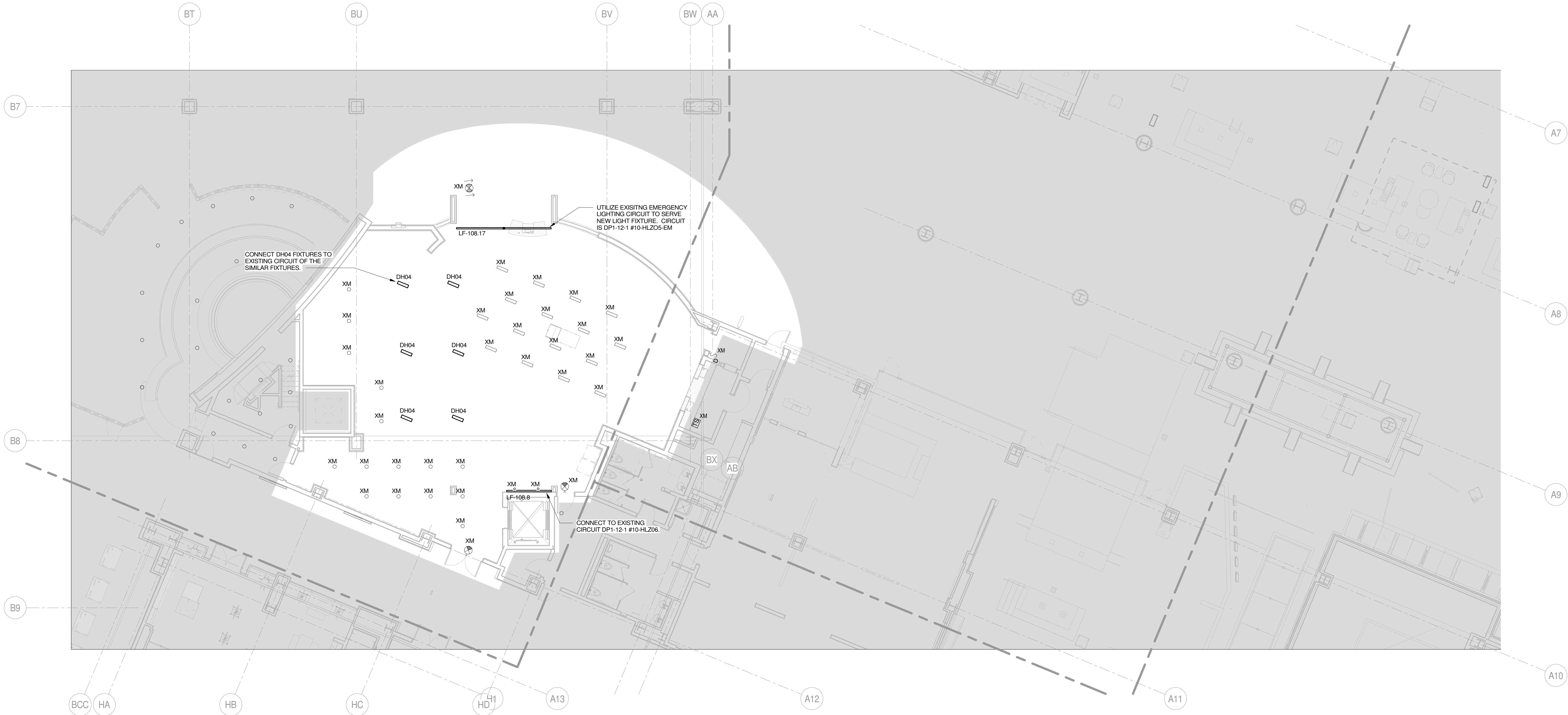


LIGHTING PLAN NOTES

- 1 FOR ELECTRICAL LEGEND AND GENERAL NOTES REFER TO DRAWING E-1.
- 2 FOR LIGHTING FIXTURE SCHEDULE REFER TO DRAWING E-22.
- 3 FOR EXACT LOCATIONS, QUANTITIES AND MOUNTING HEIGHTS OF ALL LIGHTING FIXTURES REFER TO ARCHITECT'S REFLECTED CEILING PLANS AND ELEVATIONS.
- 4 PROVIDE METAL BARRIERS IN ALL MULTI-GANG SWITCH LOCATIONS.
- 5 ALL EXIT SIGNS SHALL BE CONNECTED TO A CONSTANT, UNSWITCHED SOURCE ON THE EMERGENCY BRANCH.
- 6 CIRCUIT NUMBERS ARE FOR DESCRIPTIVE PURPOSES ONLY. EXACT NUMBERS SHALL BE DETERMINED IN THE FIELD.
- 7 ALL OCCUPANCY SENSOR LOCATIONS ARE APPROXIMATE. REFER TO MANUFACTURERS INSTALLATION INSTRUCTIONS PRIOR TO INSTALLATION.
- 8 ULTRASONIC CEILING MOUNT SENSORS SHALL BE LOCATED A MINIMUM OF SIX FEET FROM HVAC SUPPLY/RETURN VENTS.
- 9 CONTRACTOR IS RESPONSIBLE FOR: OCCUPANCY SENSOR PROPER SENSITIVITY & TIME DELAY SETTINGS (FOR NON-ADAPTIVE PRODUCTS) RECOMMENDED PLACEMENT, AND FIELD VERIFICATION OF CIRCUITS WITHIN RESPECT TO POWER PLACEMENT.
- 10 OCCUPANCY SENSORS MOUNTED OVER THE DOOR MUST BE PLACED ONE FOOT INSIDE THE THRESHOLD.
- 11 FOR LIGHTING IN MECHANICAL ROOMS AND BACK OF HOUSE AREAS PROVIDE LIGHTING GENERALLY AS SHOWN. LIGHTING SHALL BE SHIFTED AS REQUIRED AT MECHANICAL EQUIPMENT THAT REQUIRES SPACE FOR FILTERS, ETC. MOUNT LIGHTING AT 9'-0" MAXIMUM UNLESS DUCTWORK AND PIPING CANT BE AVOIDED WHERE A FIXTURE IS NEEDED. IN THIS INSTANCE, RAISE OR LOWER THE FIXTURE AS REQUIRED, (NOT LESS THAN 7'-6"). LIGHTING IN THE MECHANICAL ROOM SHALL BE SUSPENDED BY CHAIN, ALLOW (3") OF SLACK CHAIN AND FEEDER AT EACH FIXTURE TO PERMIT FUTURE ADJUSTMENT. DO NOT SUPPORT LIGHT FIXTURES FROM DUCT OR PIPING. PROVIDE UNISTRUT BELOW DUCTS WHERE FIXTURE LOCATIONS COINCIDE WITH DUCT RUNS. PROVIDE THREADED RODS FROM STRUCTURAL MEMBERS TO SUPPORT UNISTRUT.



1 FIRST FLOOR LIGHTING PLAN  
1/8" = 1'-0"