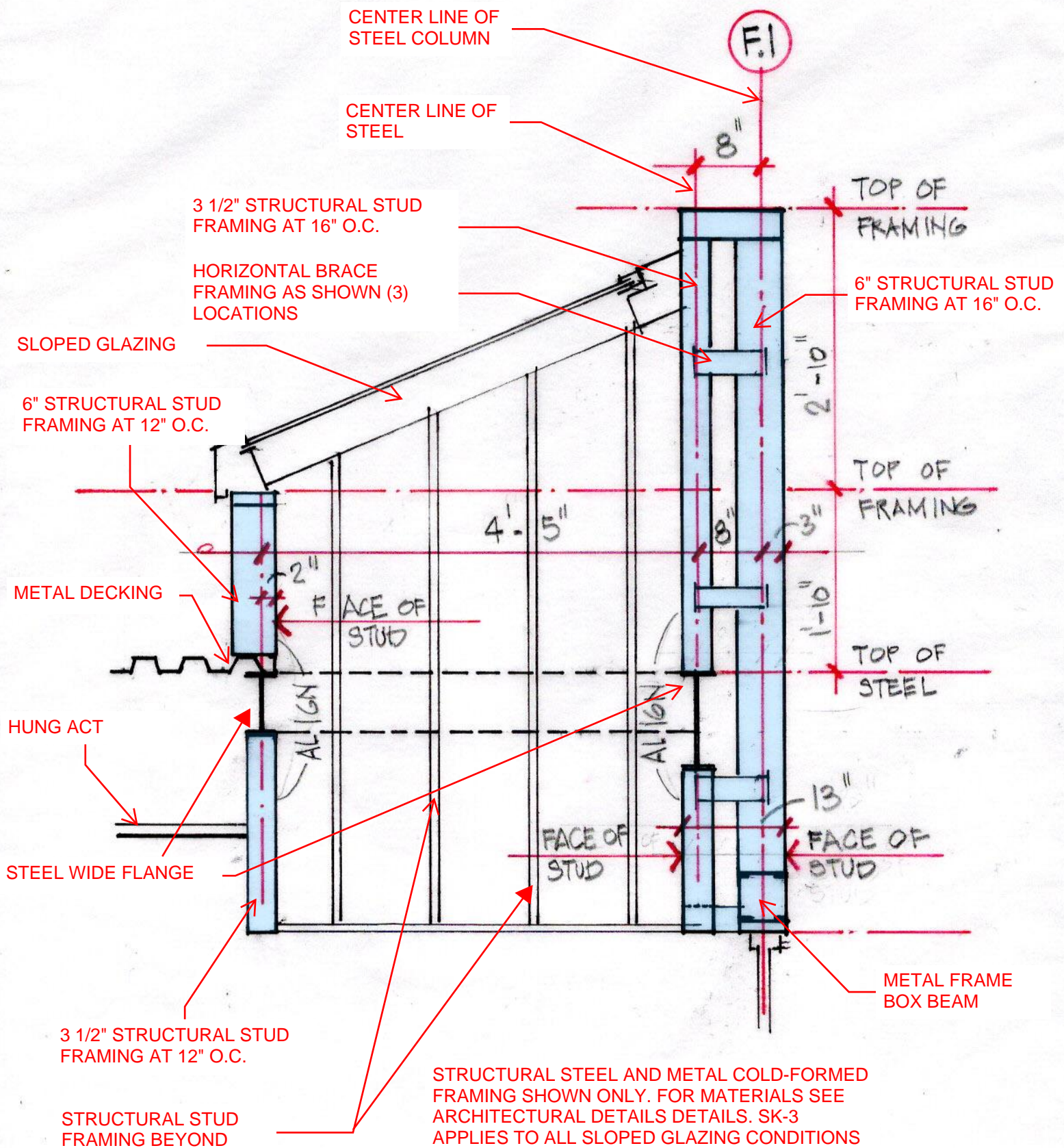


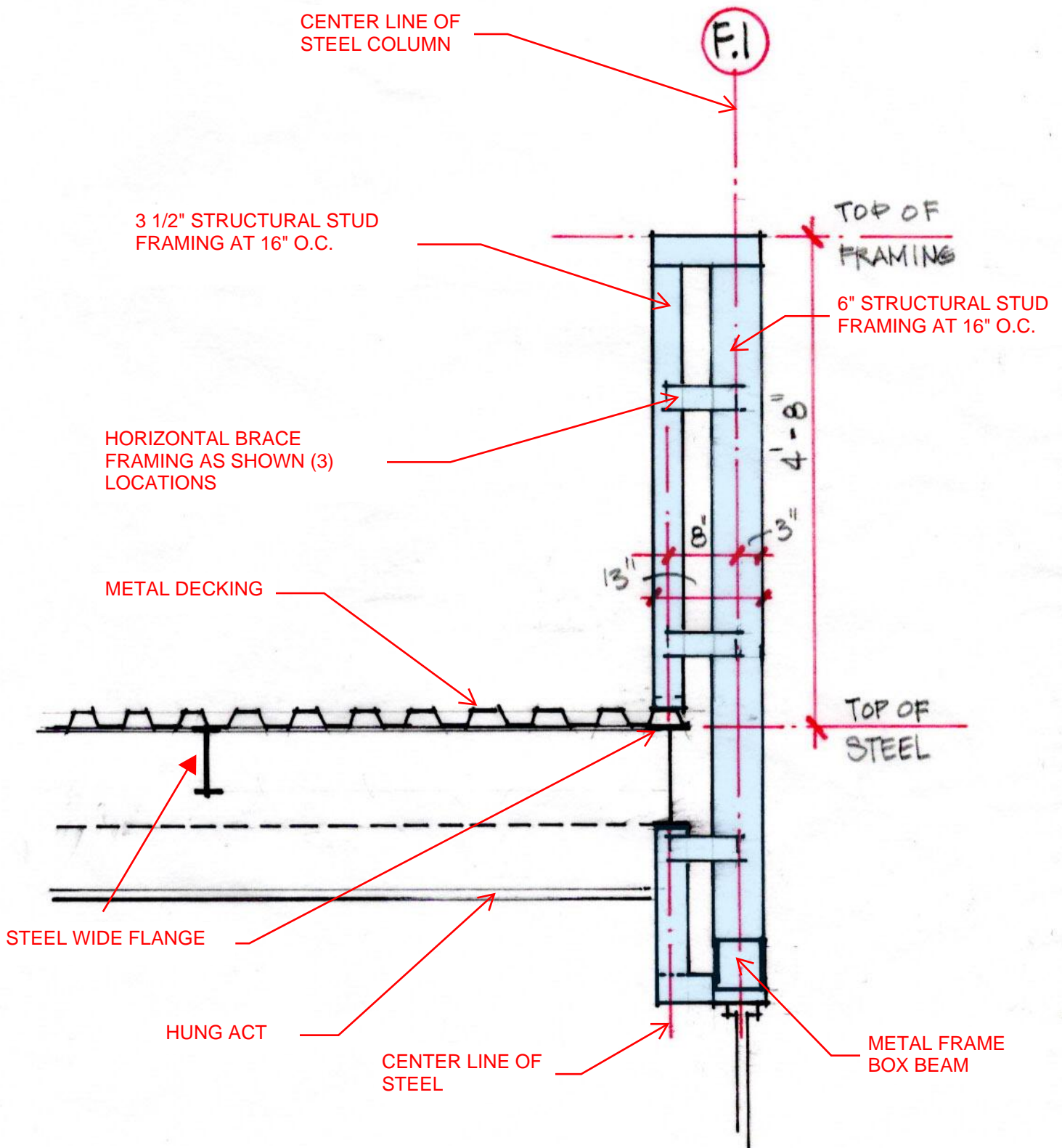
Additional SK documents

The construction documents show the sloped glazing and ceiling as a continuous light well. The drawings have been revised to show individual light wells at the Communal Cat Playrooms. A106 and A107 have been revised to show these conditions. SK3, SK-4, SK5 sections taken through the light wells at column line "F.1" show structural steel and metal stud framing of the sloped glazing and light wells. The framing shown on SK3, SK-4, SK5 shall supersede the framing shown on the architectural drawings only. Materials that are part of the architectural wall sections and details apply to the SK sections. The section keys SK3, SK-4, SK5 are shown on the revised roof plan A107.



SK-3

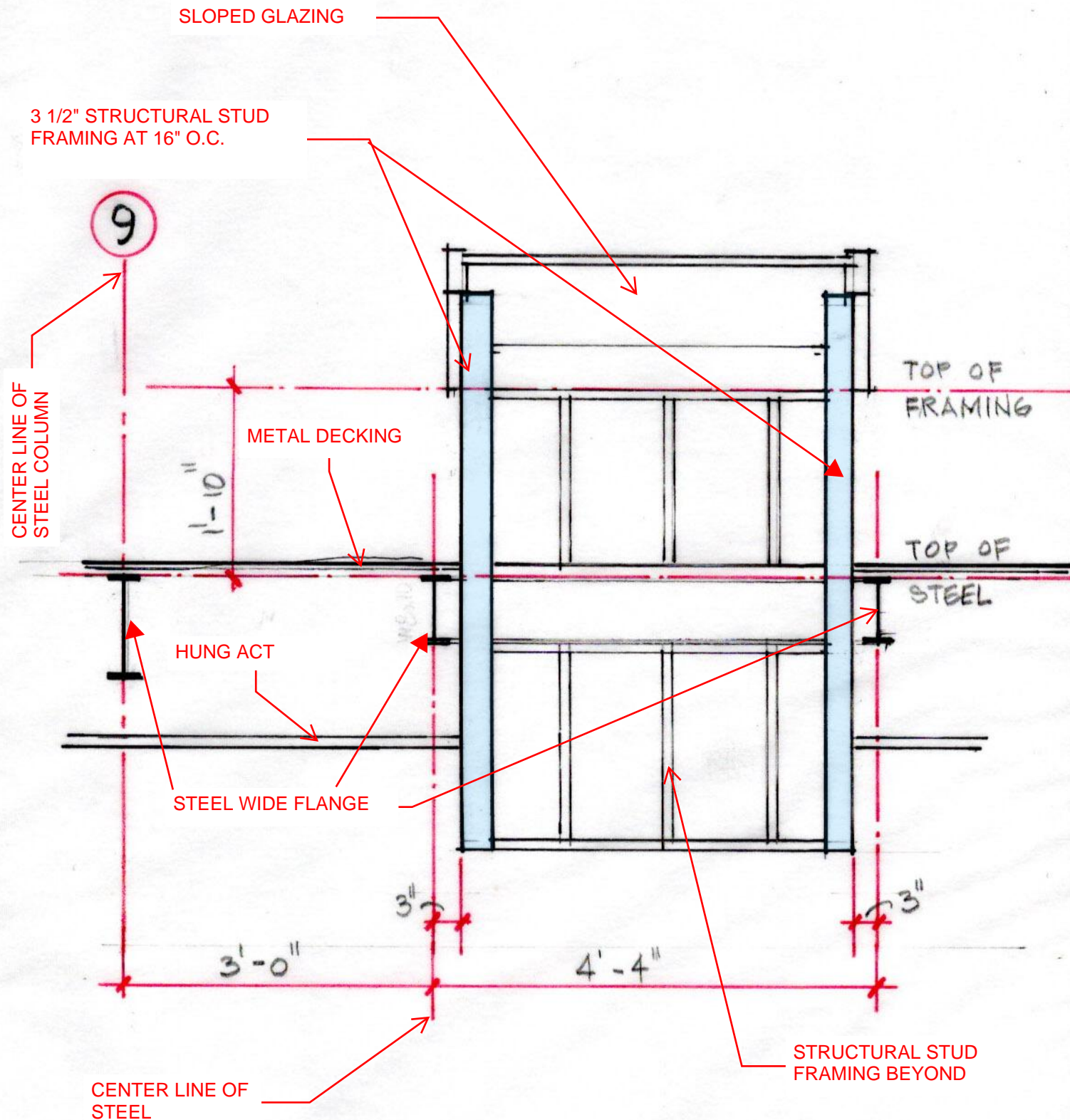
DT: 12-2-21
SC: 3/4" = 1'-0"



STRUCTURAL STEEL AND METAL COLD-FORMED FRAMING SHOWN ONLY. FOR MATERIALS SEE ARCHITECTURAL DETAILS DETAILS. SK-3 APPLIES TO ALL SLOPED GLAZING CONDITIONS

SK-4

DT: 12-2-21
SC: 3/4" = 1'-0"



STRUCTURAL STEEL AND METAL COLD-FORMED FRAMING SHOWN ONLY. FOR MATERIALS SEE ARCHITECTURAL DETAILS DETAILS. SK-3 APPLIES TO ALL SLOPED GLAZING CONDITIONS

SK-5

DT: 12-2-21
SC: 3/4" = 1'-0"