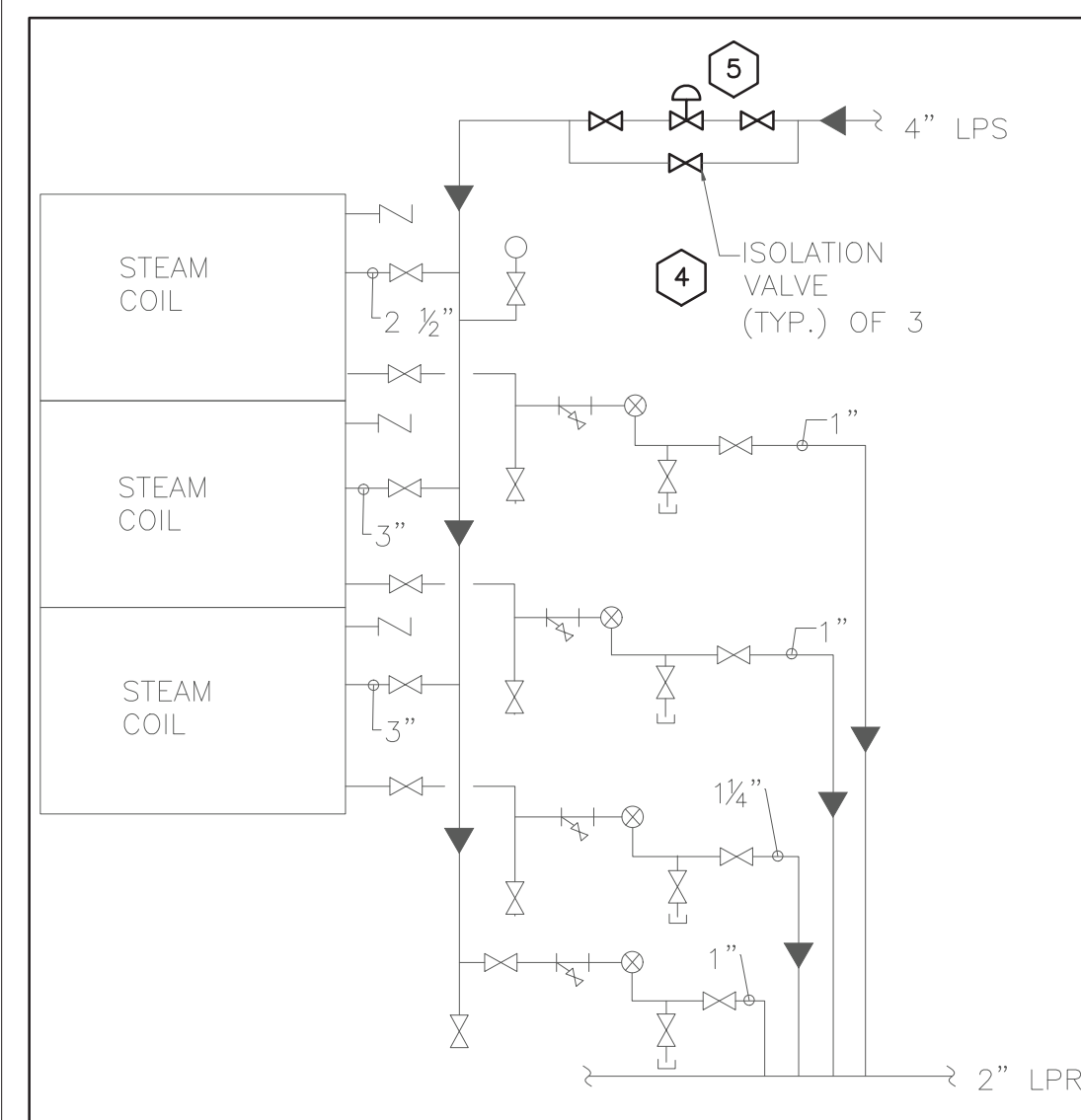
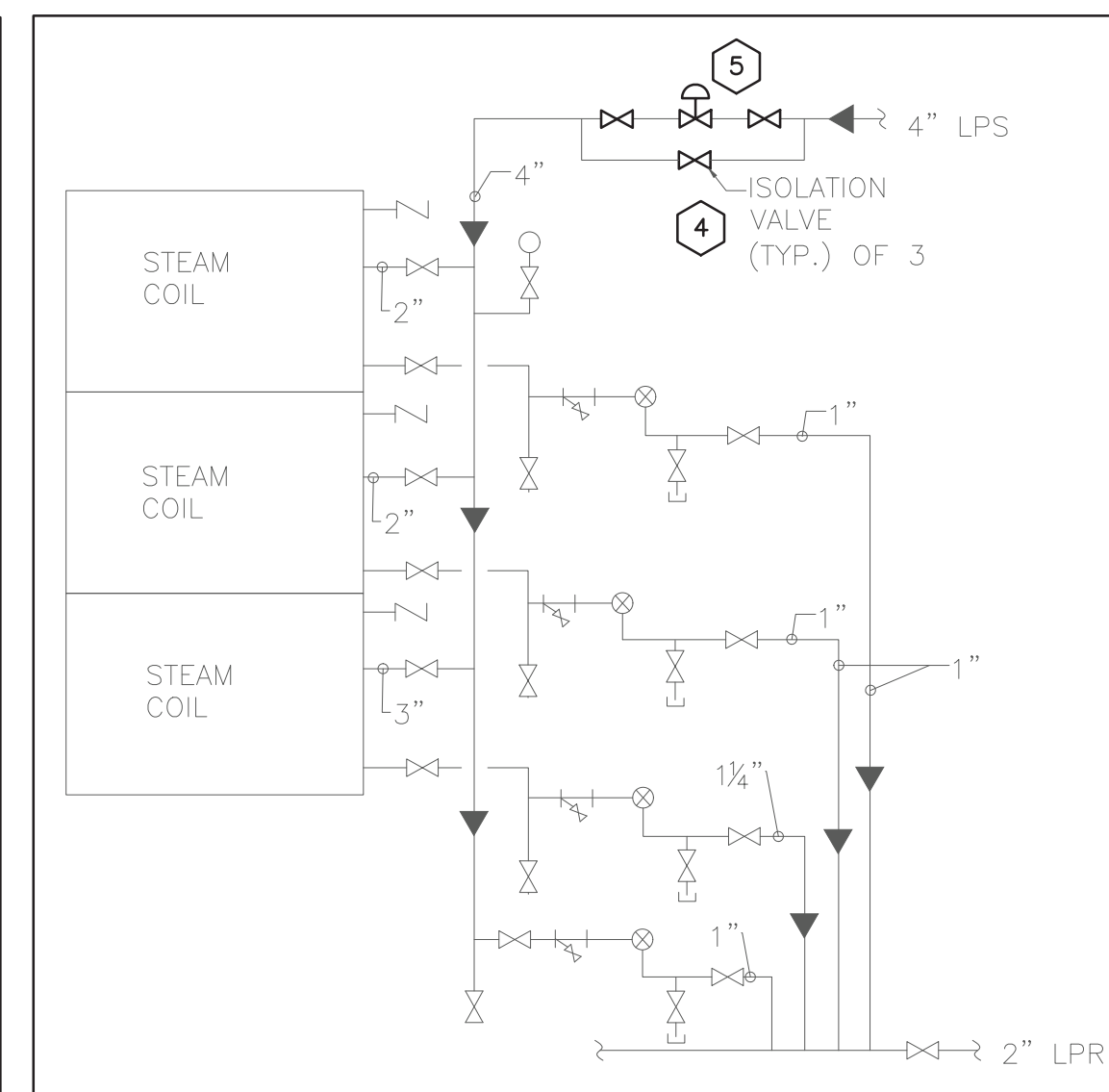


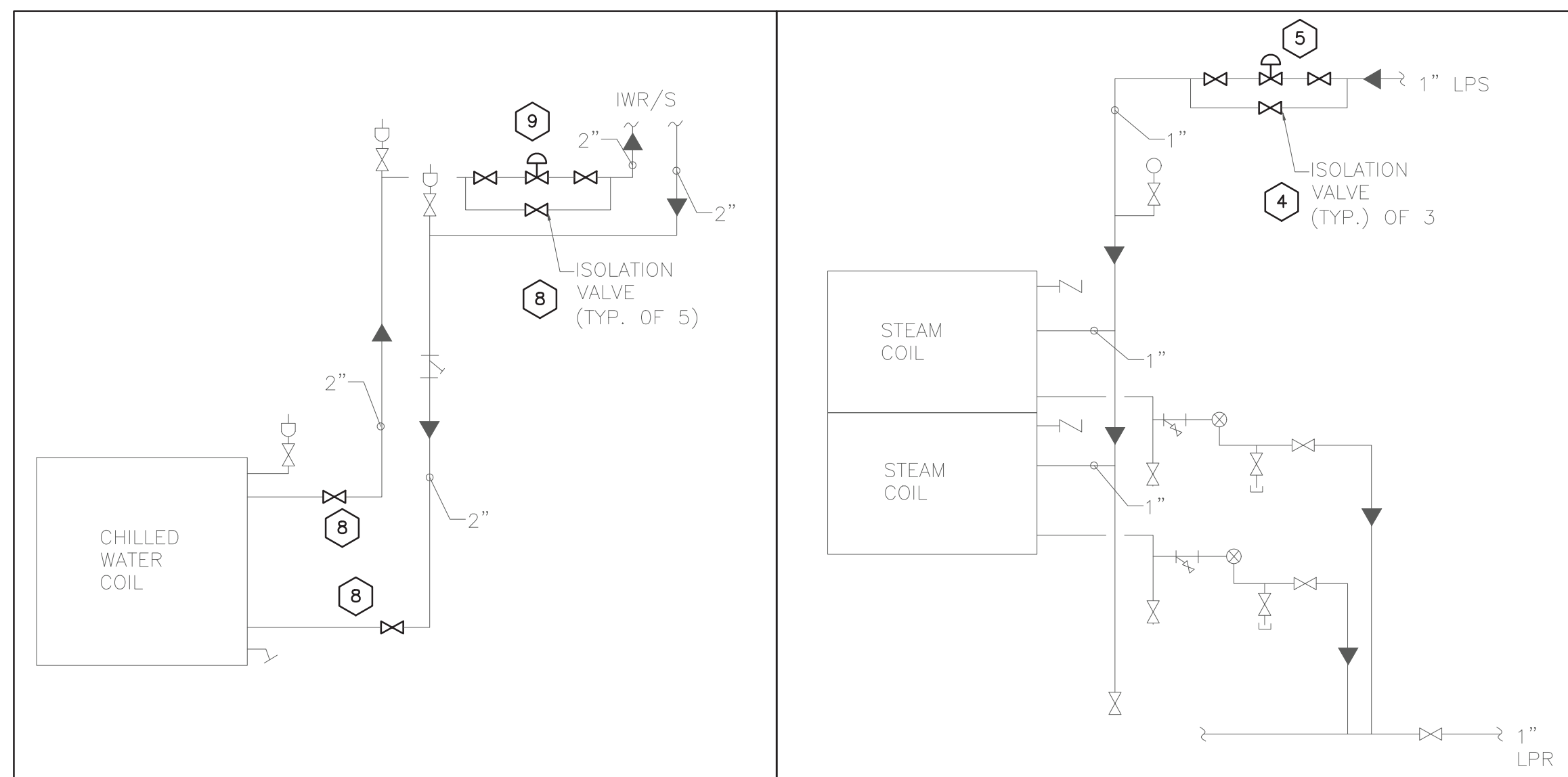
1 MECHANICAL ROOM 1 DEMOLITION PART PLAN
SCALE: 1/8"=1'-0"



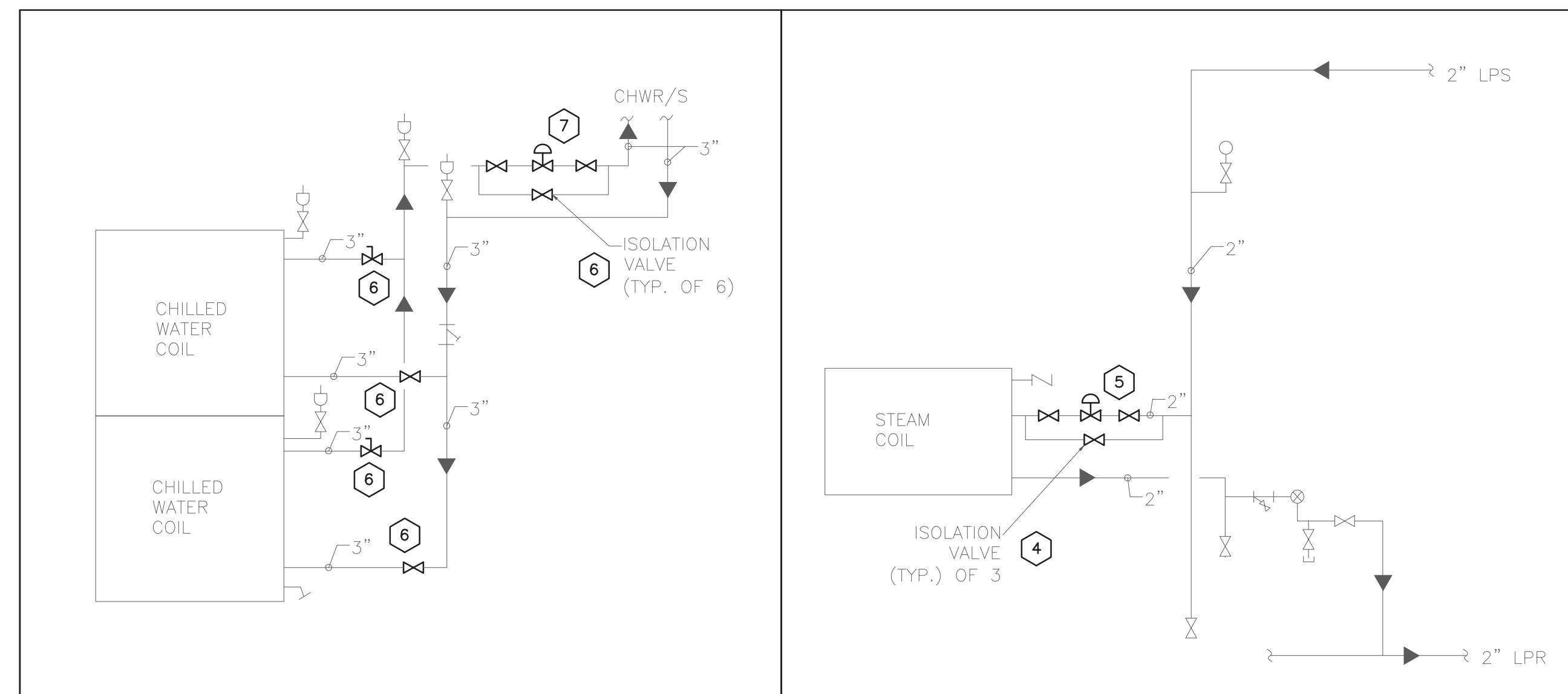
2 HV-1 DEMOLITION COIL DETAILS
SCALE: NOT TO SCALE



3 AC-1 DEMOLITION COIL DETAILS
SCALE: NOT TO SCALE



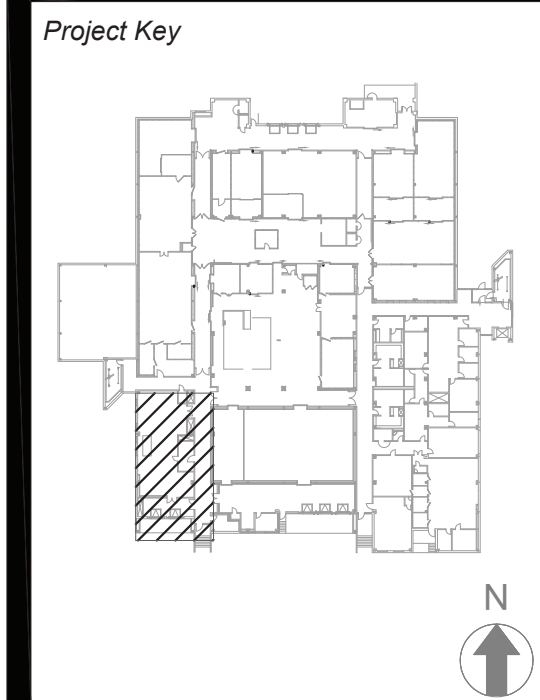
4 AC-5 DEMOLITION COIL DETAILS
SCALE: NOT TO SCALE



5 AC-4 DEMOLITION COIL DETAILS
SCALE: NOT TO SCALE

KEYED DEMOLITION NOTES

- 1 DISCONNECT AND REMOVE EXISTING CONTROLLERS, ENCLOSURES AND NETWORK WIRING. CONTROLLER TO BE REMOVED AFTER ALL EQUIPMENT CONTROL POINTS HAVE BEEN MIGRATED TO NEW CONTROLLER. NEW COMMUNICATIONS CABLING AND RACEWAYS SHALL BE INSTALLED PARALLEL TO EXISTING PRIOR TO REMOVING EXISTING CABLING AND WIRING.
- 2 DISCONNECT AND REMOVE EXISTING PNEUMATIC TEMPERATURE SENSOR. REMOVE PNEUMATIC POLY TUBING BACK ONE FOOT FROM WORK AREA AND PERMANENTLY CAP AND SEAL.
- 3 DISCONNECT AND REMOVE EXISTING DAMPER, PNEUMATIC ACTUATOR, AND P/E TRANSDUCER. PROVIDE PERMANENT CAP ON PNEUMATIC LINE.
- 4 DISCONNECT AND REMOVE EXISTING ISOLATION VALVES FROM LPS PIPING SERVING AHU HEATING COILS AND HEAT EXCHANGERS. REFER TO M-001 FOR PHASING PLAN AND COIL AND DETAILS FOR QUANTITIES AND SIZES.
- 5 ISOLATE LPS AND LPR PIPING UTILIZING NEW PAIR OF ISOLATION VALVES. DISCONNECT AND REMOVE PNEUMATIC CONTROL VALVE AND PROVIDE TEMPORARY CAPS AS NECESSARY ON ENDS OF PIPES REMAINING. REMOVE PNEUMATIC CONTROL LINE BETWEEN VALVE AND FORMER PNEUMATIC CONTROLLER.
- 6 DISCONNECT AND REMOVE EXISTING ISOLATION VALVES FROM CHWS AND CHWR PIPING SERVING AHU COOLING COILS. REFER TO M-001 FOR PHASING PLAN AND COIL AND DETAILS FOR QUANTITIES AND SIZES.
- 7 ISOLATE CHWS AND CHWS PIPING UTILIZING NEW PAIR OF ISOLATION VALVES. DISCONNECT AND REMOVE PNEUMATIC CONTROL VALVE AND PROVIDE TEMPORARY CAPS AS NECESSARY ON ENDS OF PIPES REMAINING. REMOVE PNEUMATIC CONTROL LINE BETWEEN VALVE AND FORMER PNEUMATIC CONTROLLER.
- 8 DISCONNECT AND REMOVE EXISTING ISOLATION VALVES FROM IWS AND IWR PIPING SERVING AHU COOLING COILS. REFER TO M-001 FOR PHASING PLAN AND COIL AND DETAILS FOR QUANTITIES AND SIZES.
- 9 ISOLATE IWS AND IWS PIPING UTILIZING NEW PAIR OF ISOLATION VALVES. DISCONNECT AND REMOVE PNEUMATIC CONTROL VALVE AND PROVIDE TEMPORARY CAPS AS NECESSARY ON ENDS OF PIPES REMAINING. REMOVE PNEUMATIC CONTROL LINE BETWEEN VALVE AND FORMER PNEUMATIC CONTROLLER.
- 10 DISCONNECT AND REMOVE EXISTING PNEUMATIC DAMPER ACTUATOR AND P/E TRANSDUCER. PROVIDE PERMANENT CAP ON PNEUMATIC LINE. LUBRICATE AND CLEAN MOVEABLE PARTS ON DAMPER.



REVISIONS		
Rev No	Description	Date

Client
NEW YORK STATE OF OPPORTUNITY **Office of Mental Health**
44 HOLLAND AVENUE
ALBANY, NY 12229
Project Title
BMS REPLACEMENT
COOK CHILL PRODUCTION CENTER
145 OLD ORANGEBURG ROAD
ORANGEBURG, NY 10962

Drawing Title
MECHANICAL ROOM 1
DEMOLITION
PART PLAN

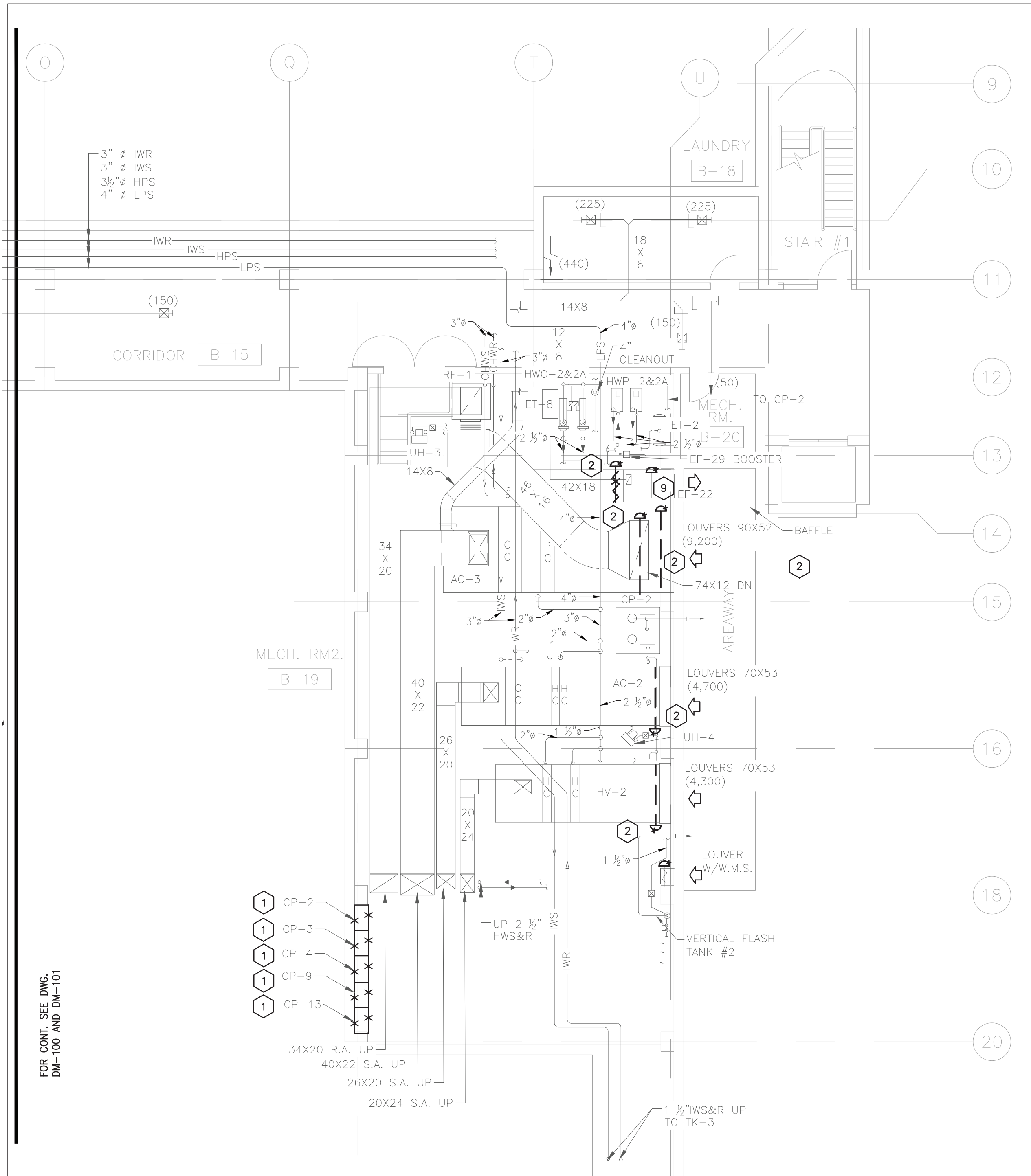
Phase
BID DOCUMENTS

Drawn By: **Checked By:** **Date:**
10/15/2021

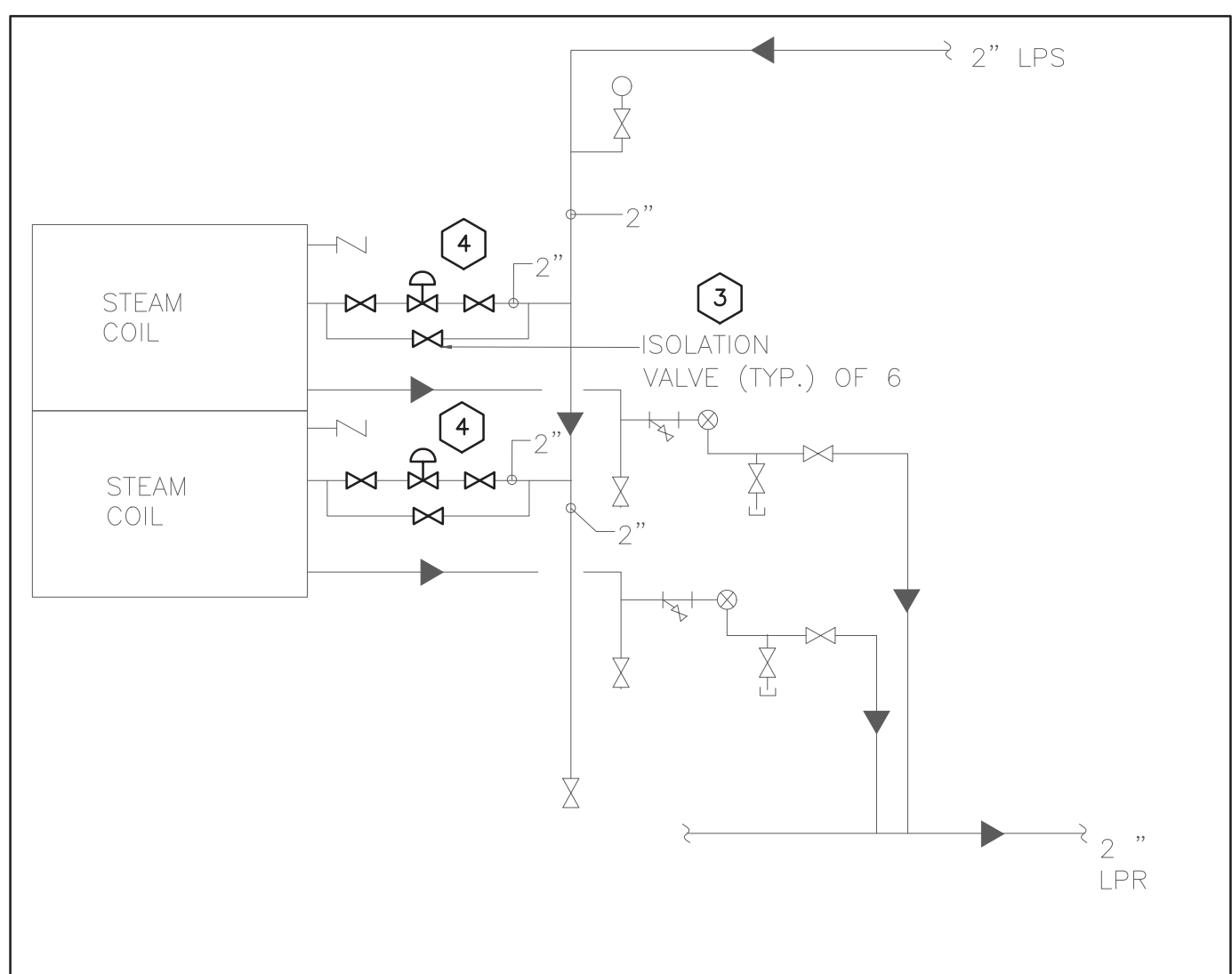
Seal & Signature **DASNY Project No:**
360880

Drawing Number
DM-101

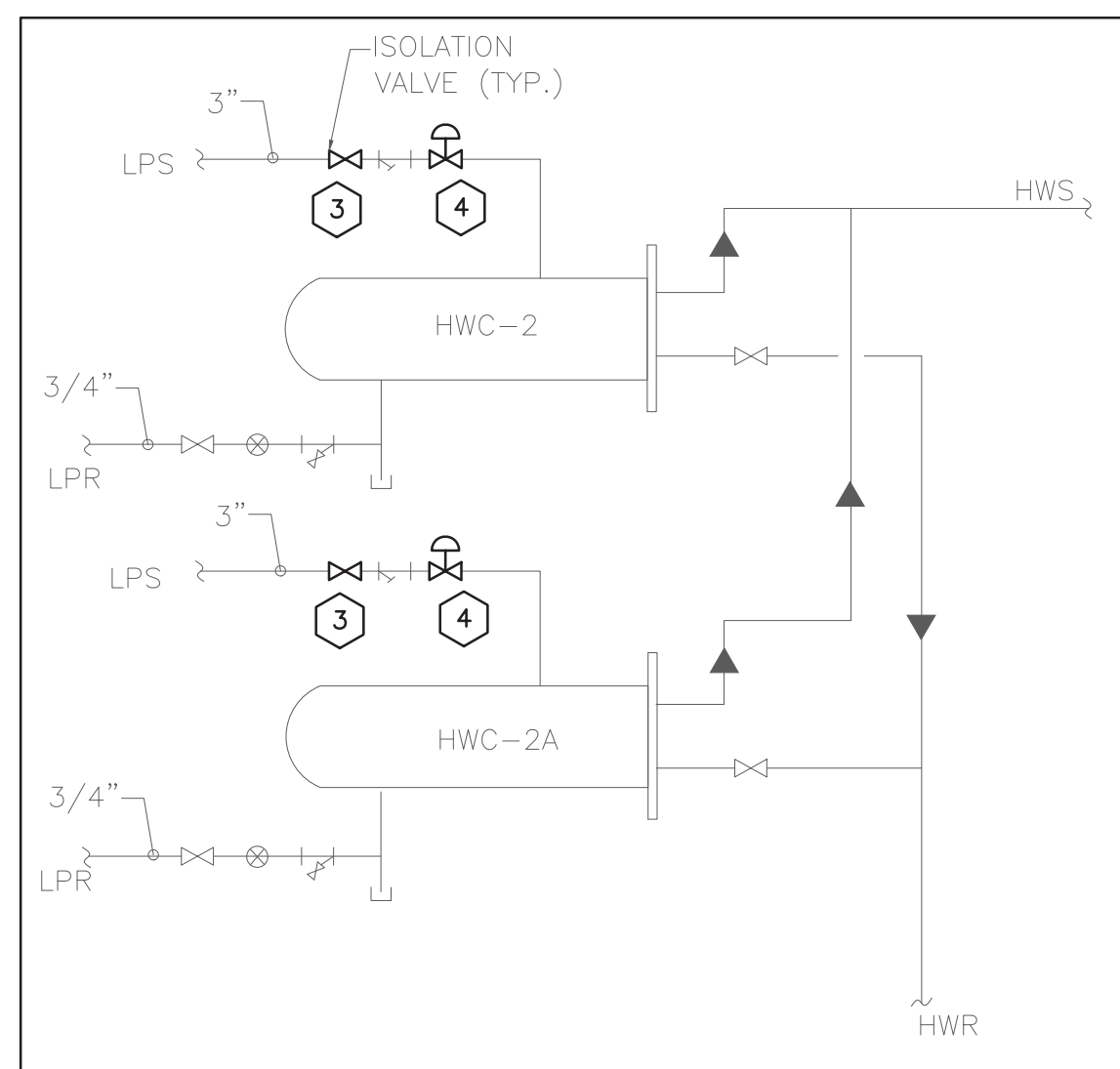
Drawing
5 of 30



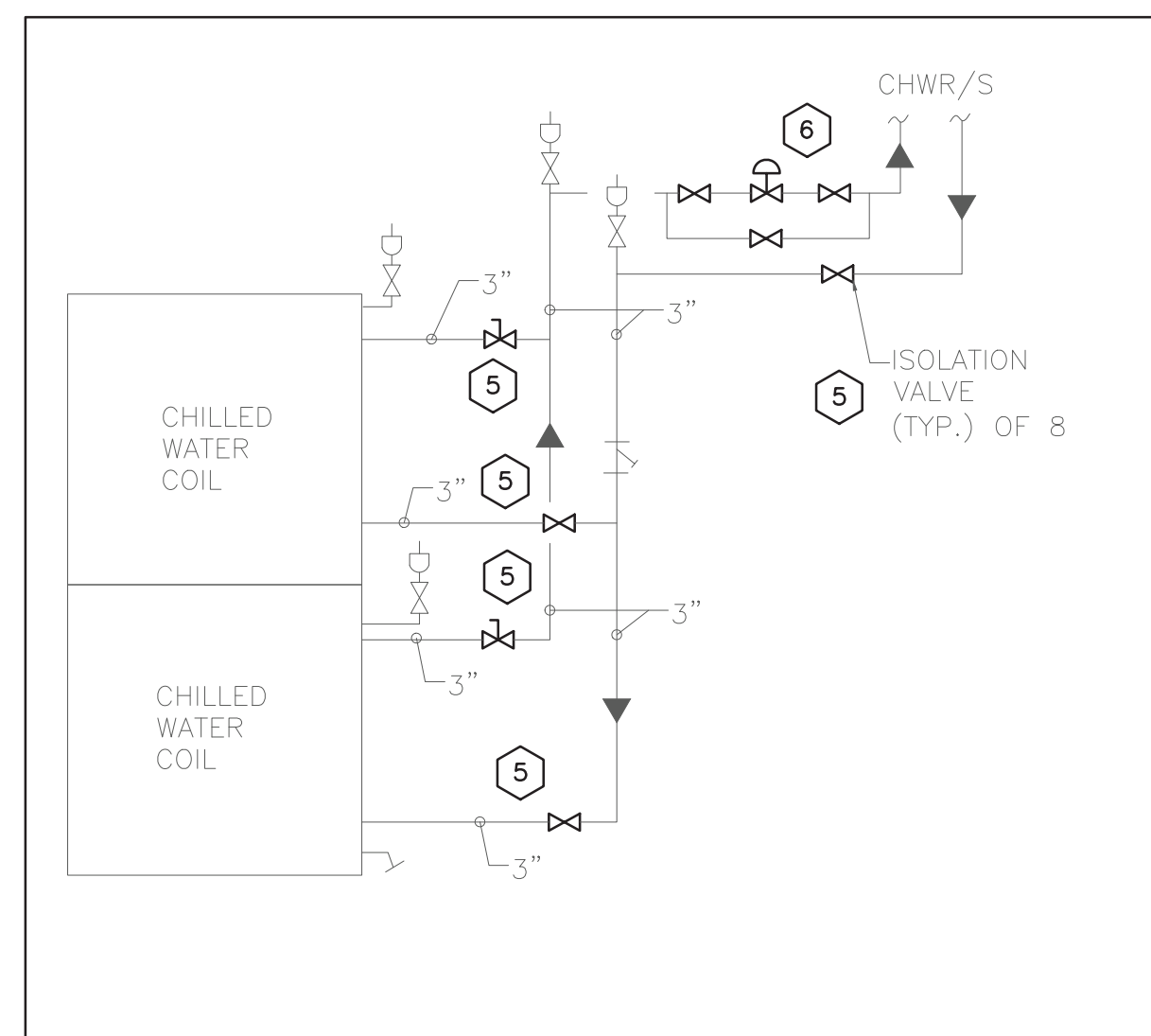
1 MECHANICAL ROOM 2 DEMOLITION PART PLAN
SCALE: 1/8"=1'-0"



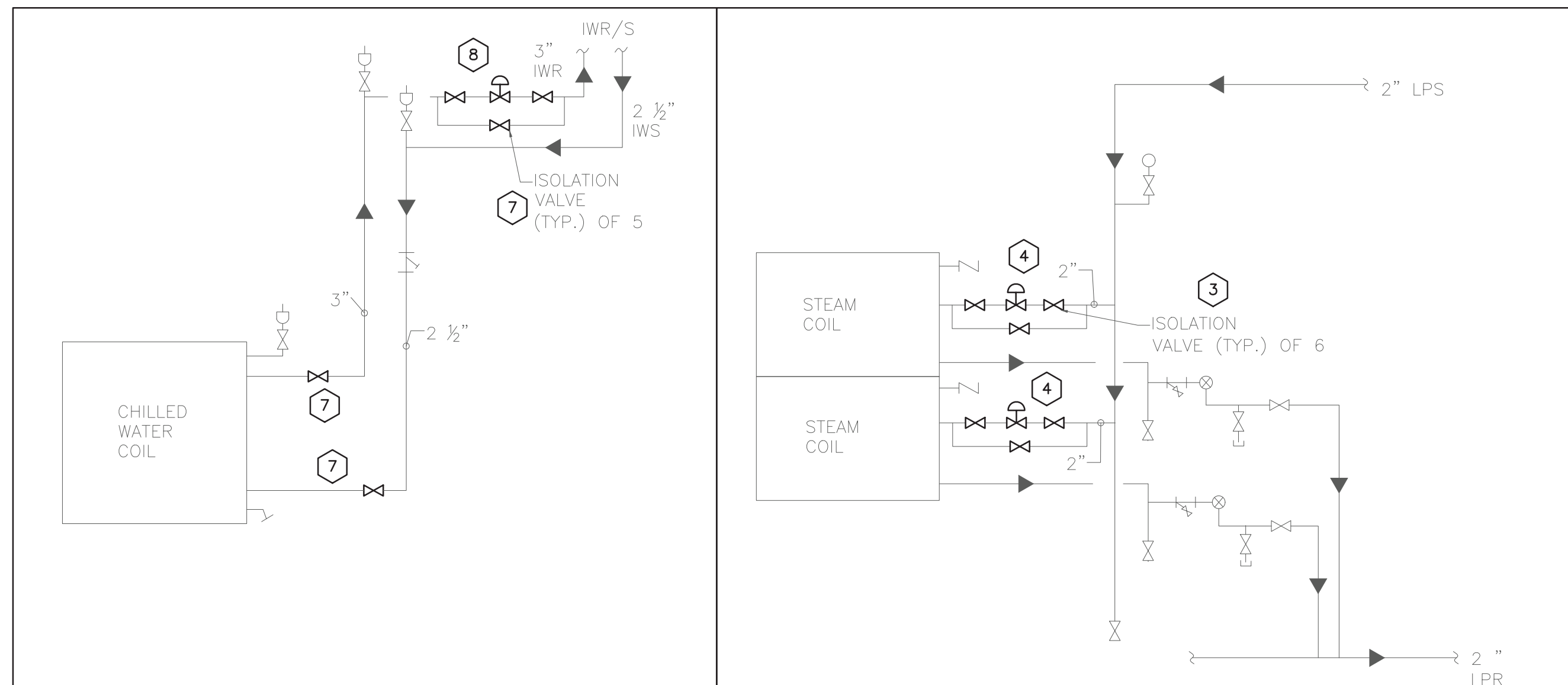
3 HV-2 DEMOLITION COIL DETAILS
SCALE: NOT TO SCALE



4 HVC-2&2A DEMOLITION COIL DETAILS
SCALE: NOT TO SCALE



5 AC-3 DEMOLITION COIL DETAILS
SCALE: NOT TO SCALE



2 AC-2 DEMOLITION COIL DETAILS
SCALE: NOT TO SCALE

KEYED DEMOLITION NOTES

- 1 DISCONNECT AND REMOVE EXISTING CONTROLLERS, ENCLOSURES AND NETWORK WIRING. CONTROLLER TO BE REMOVED AFTER ALL EQUIPMENT CONTROL POINTS HAVE BEEN MIGRATED TO NEW CONTROLLER. NEW COMMUNICATIONS CABLING AND RACEWAYS SHALL BE INSTALLED PARALLEL TO EXISTING PRIOR TO REMOVING EXISTING CABLING AND WIRING.
- 2 DISCONNECT AND REMOVE EXISTING DAMPER, PNEUMATIC ACTUATOR, AND P/E TRANSDUCERS. PROVIDE PERMANENT CAP ON PNEUMATIC LINE.
- 3 DISCONNECT AND REMOVE EXISTING ISOLATION VALVES FROM LPS PIPING SERVING AHU HEATING COILS AND HEAT EXCHANGERS. REFER TO M-001 FOR PHASING PLAN AND COIL AND DETAILS FOR QUANTITIES AND SIZES.
- 4 ISOLATE LPS AND LPR PIPING UTILIZING NEW PAIR OF ISOLATION VALVES. DISCONNECT AND REMOVE PNEUMATIC CONTROL VALVE AND PROVIDE TEMPORARY CAPS AS NECESSARY ON ENDS OF PIPES REMAINING. REMOVE PNEUMATIC CONTROL LINE BETWEEN VALVE AND FORMER PNEUMATIC CONTROLLER.
- 5 DISCONNECT AND REMOVE EXISTING ISOLATION VALVES FROM CHWS AND CHWR PIPING SERVING AHU COOLING COILS. REFER TO M-001 FOR PHASING PLAN AND COIL AND DETAILS FOR QUANTITIES AND SIZES.
- 6 ISOLATE CHWS AND CHWS PIPING UTILIZING NEW PAIR OF ISOLATION VALVES. DISCONNECT AND REMOVE PNEUMATIC CONTROL VALVE AND PROVIDE TEMPORARY CAPS AS NECESSARY ON ENDS OF PIPES REMAINING. REMOVE PNEUMATIC CONTROL LINE BETWEEN VALVE AND FORMER PNEUMATIC CONTROLLER.
- 7 DISCONNECT AND REMOVE EXISTING ISOLATION VALVES FROM IWS AND IWR PIPING SERVING AHU COOLING COILS. REFER TO M-001 FOR PHASING PLAN AND COIL AND DETAILS FOR QUANTITIES AND SIZES.
- 8 ISOLATE IWS AND IWS PIPING UTILIZING NEW PAIR OF ISOLATION VALVES. DISCONNECT AND REMOVE PNEUMATIC CONTROL VALVE AND PROVIDE TEMPORARY CAPS AS NECESSARY ON ENDS OF PIPES REMAINING. REMOVE PNEUMATIC CONTROL LINE BETWEEN VALVE AND FORMER PNEUMATIC CONTROLLER.
- 9 DISCONNECT AND REMOVE EXISTING PNEUMATIC DAMPER ACTUATOR AND P/E TRANSDUCERS. PROVIDE PERMANENT CAP ON PNEUMATIC LINE. LUBRICATE AND CLEAN MOVEABLE PARTS ON DAMPER.

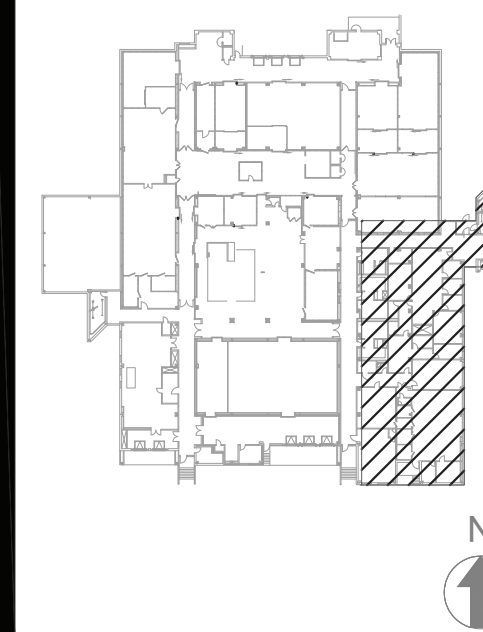
Consultants:



EME Group
Consulting Engineers
129 West 27th Street
New York, NY, 10001
(212) 529-5969

292 Washington Ave Ext
Albany, NY, 12203
(518) 862-0882

Project Key



REVISIONS

Rev No	Description	Date:

Client

NEW YORK STATE OF OPPORTUNITY **Office of Mental Health**
44 HOLLAND AVENUE
ALBANY, NY 12229

Project Title

BMS REPLACEMENT
COOK CHILL PRODUCTION CENTER
145 OLD ORANGEBURG ROAD
ORANGEBURG, NY 10962

Drawing Title

MECHANICAL ROOM 2
DEMOLITION
PART PLAN

Phase

BID DOCUMENTS

Drawn By:
Checked By:
Date: 10/15/2021

Seal & Signature
DASNY Project No: 360880

Drawing Number
DM-102

Drawing 6 of 30