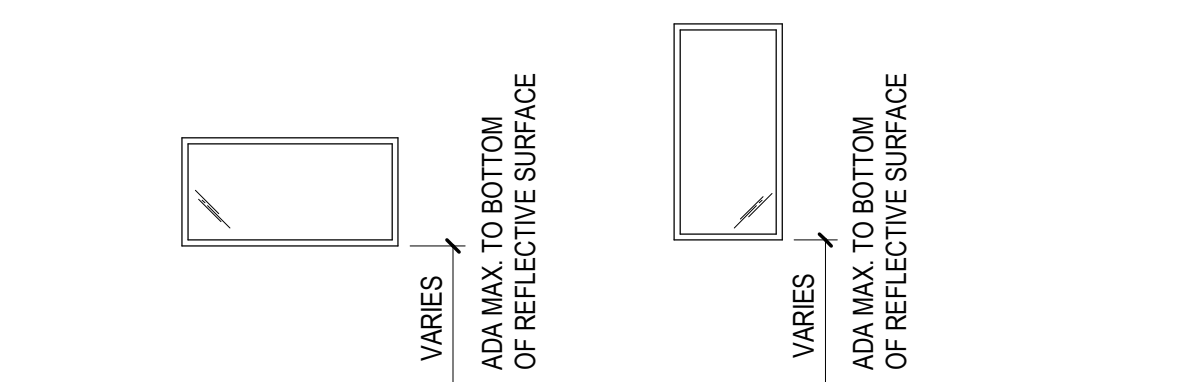


TYPICAL CHILD TOILET MOUNTING HEIGHTS

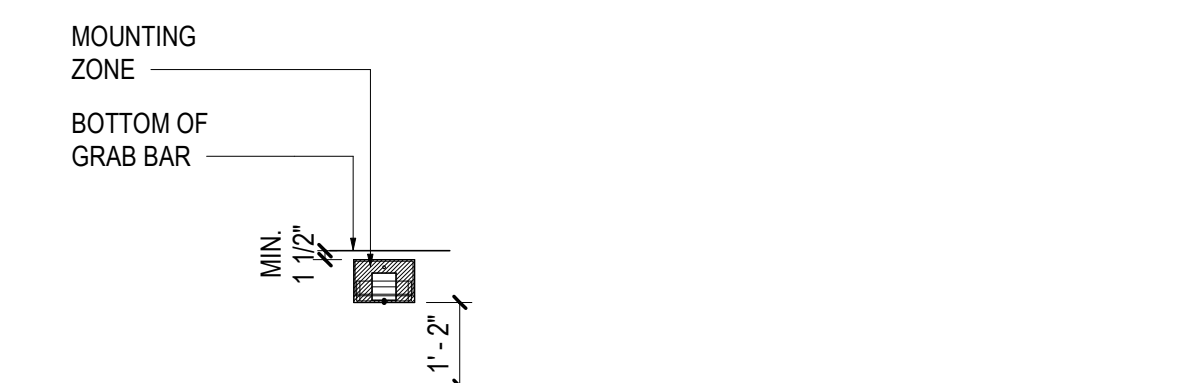
- GENERAL NOTES:
1. SEE ARCHITECT'S DRAWINGS FOR PLAN LOCATIONS
 2. ALIGN DEVICES VERTICALLY WHEN IN 4'-0" PROXIMITY
 3. FOR DEVICES ON WALLS UP TO 3'-0" WIDE, CENTER DEVICES SIMILAR TO COLUMN PLACEMENT SHOWN.
 4. FOR NON-DIMENSIONED DEVICES ON WALLS LONGER THAN 3'-0" LAYOUT DEVICES VERTICALLY ON ONE SIDE OF WALL. REFER TO PLANS FOR SIDE LOCATION OF WALL.
 5. FOR LOCATIONS WHERE MULTIPLE DEVICES ARE SCHEDULED AT SAME HEIGHT, DEVICES TO BE 2" APART.
 6. DEVICES ABOVE MILLWORK OR FURNITURE TO BE 6" ABOVE COUNTER TOP. COORDINATE WITH SCHEDULED MILLWORK AND FURNITURE.



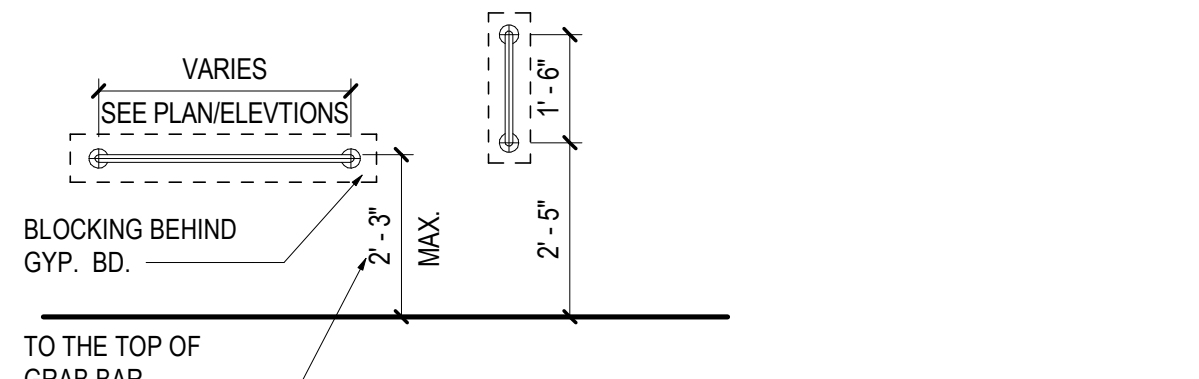
MIRROR ABOVE ART SINK/LAVATORY



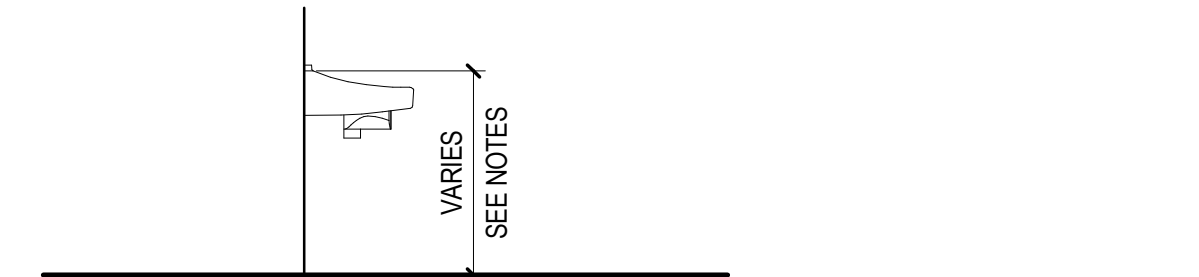
SOAP DISPENSER AND PAPER TOWEL DISPENSER



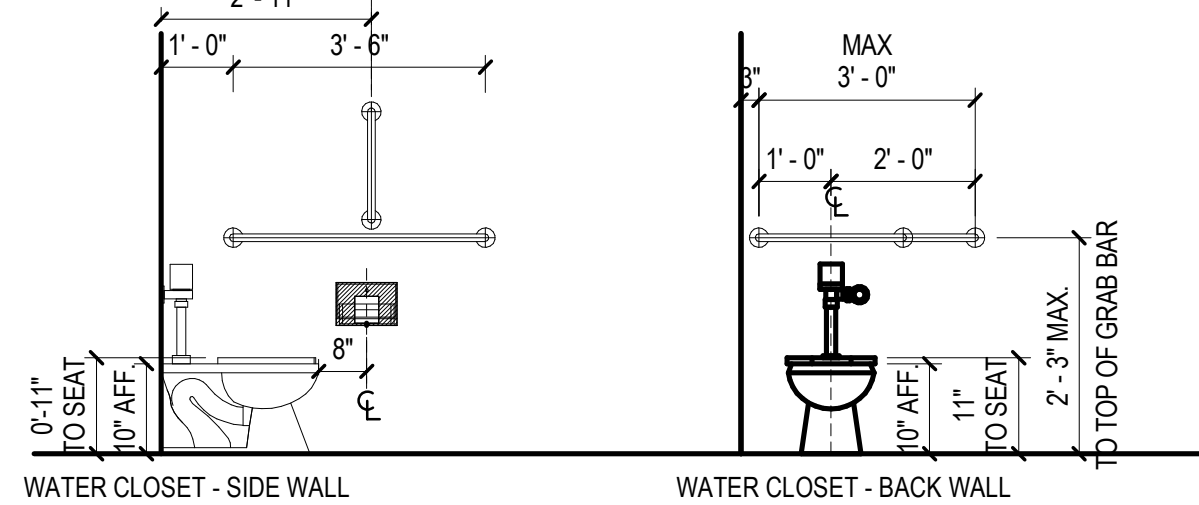
TOILET PAPER HOLDER



GRAB BARS



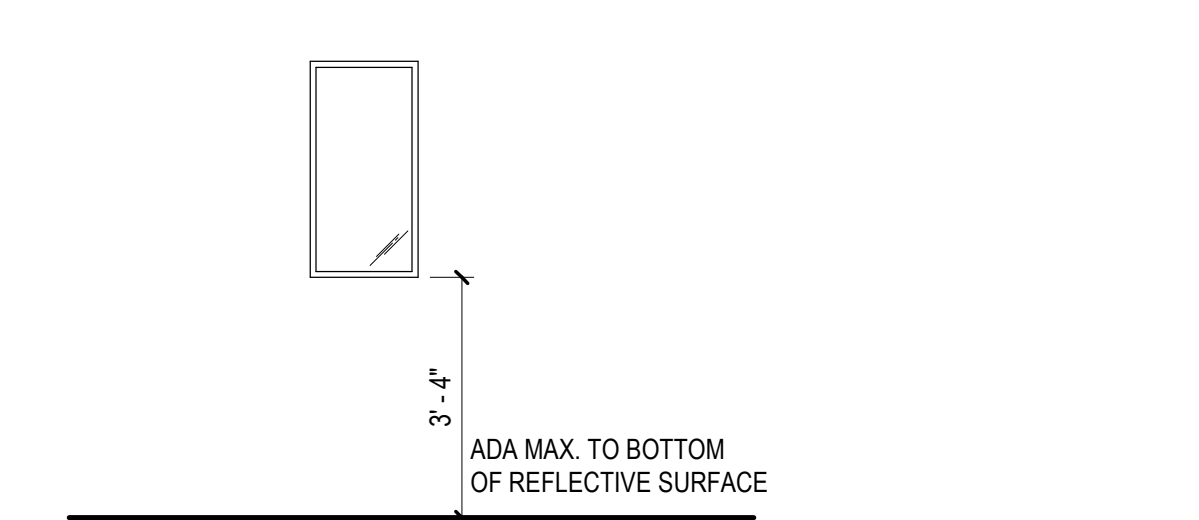
SINK



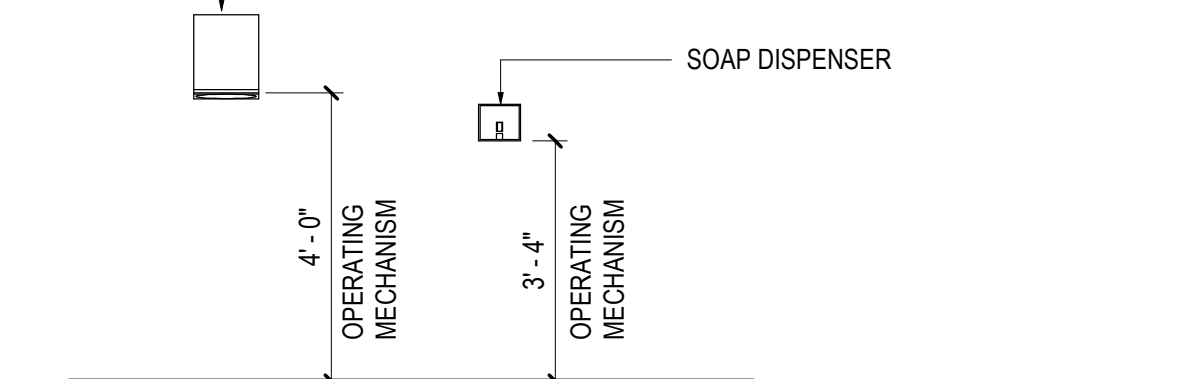
WATER CLOSET

TYPICAL ADULT TOILET MOUNTING HEIGHTS

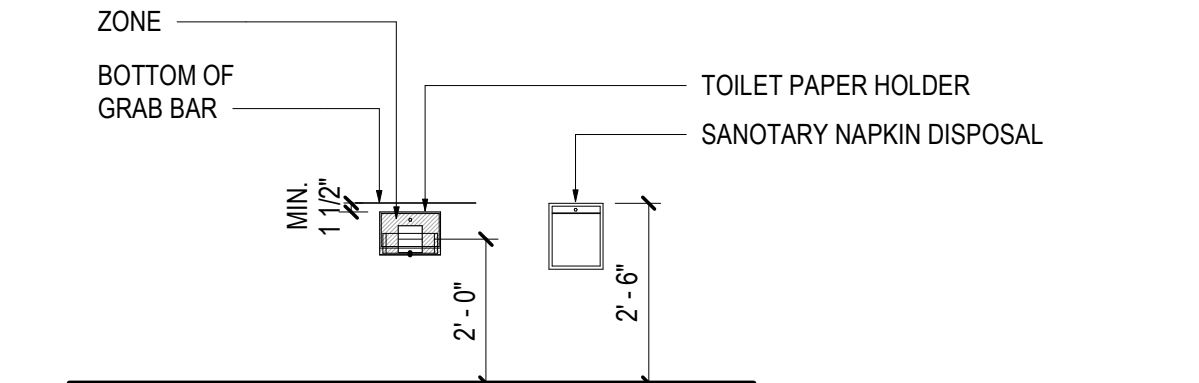
- GENERAL NOTES:
1. SEE ARCHITECT'S DRAWINGS FOR PLAN LOCATIONS
 2. ALIGN DEVICES VERTICALLY WHEN IN 4'-0" PROXIMITY
 3. FOR DEVICES ON WALLS UP TO 3'-0" WIDE, CENTER DEVICES SIMILAR TO COLUMN PLACEMENT SHOWN.
 4. FOR NON-DIMENSIONED DEVICES ON WALLS LONGER THAN 3'-0" LAYOUT DEVICES VERTICALLY ON ONE SIDE OF WALL. REFER TO PLANS FOR SIDE LOCATION OF WALL.
 5. FOR LOCATIONS WHERE MULTIPLE DEVICES ARE SCHEDULED AT SAME HEIGHT, DEVICES TO BE 2" APART.
 6. DEVICES ABOVE MILLWORK OR FURNITURE TO BE 6" ABOVE COUNTER TOP. COORDINATE WITH SCHEDULED MILLWORK AND FURNITURE.



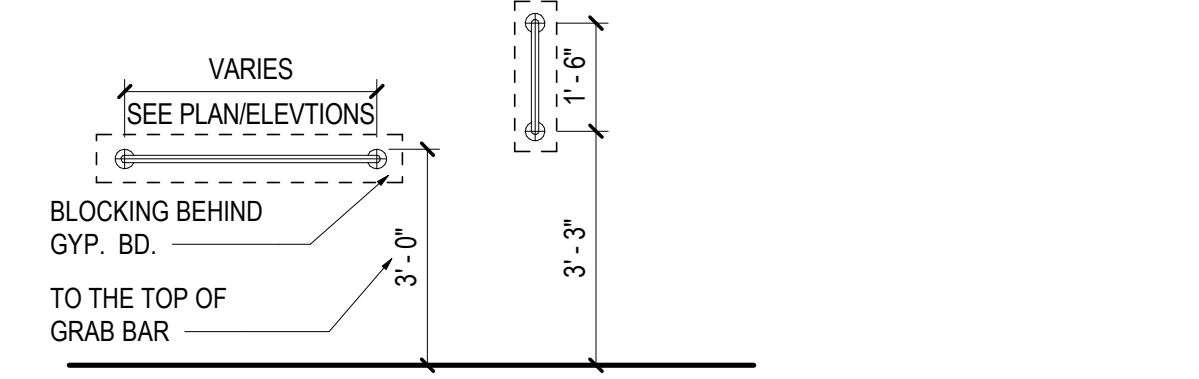
MIRROR ABOVE SINK/LAVATORY



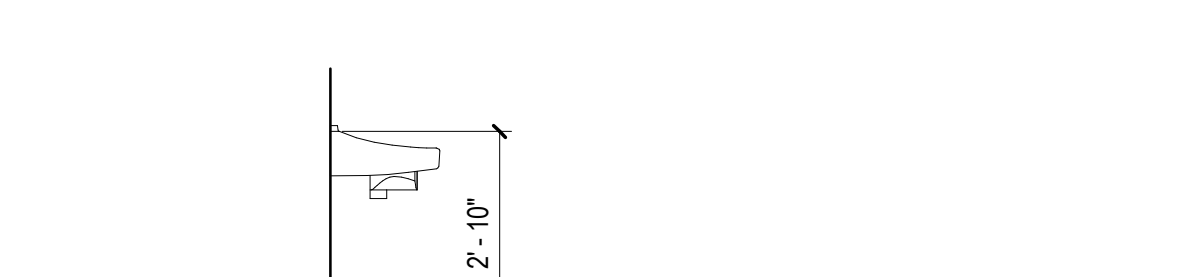
SOAP DISPENSER AND PAPER TOWEL DISPENSER



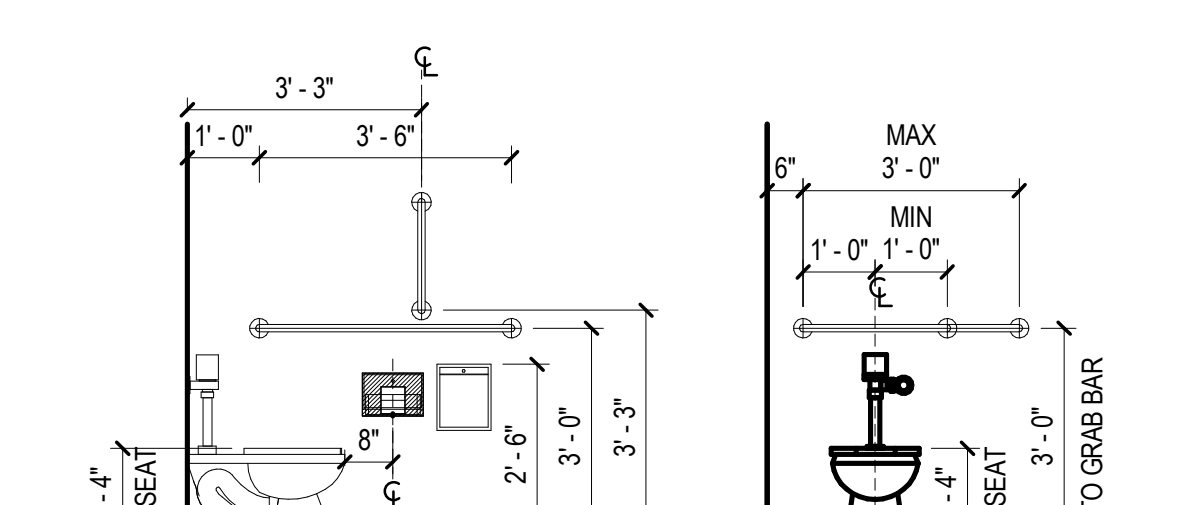
TOILET PAPER HOLDER AND SANITARY NAPKIN DISPOSAL UNIT



GRAB BARS



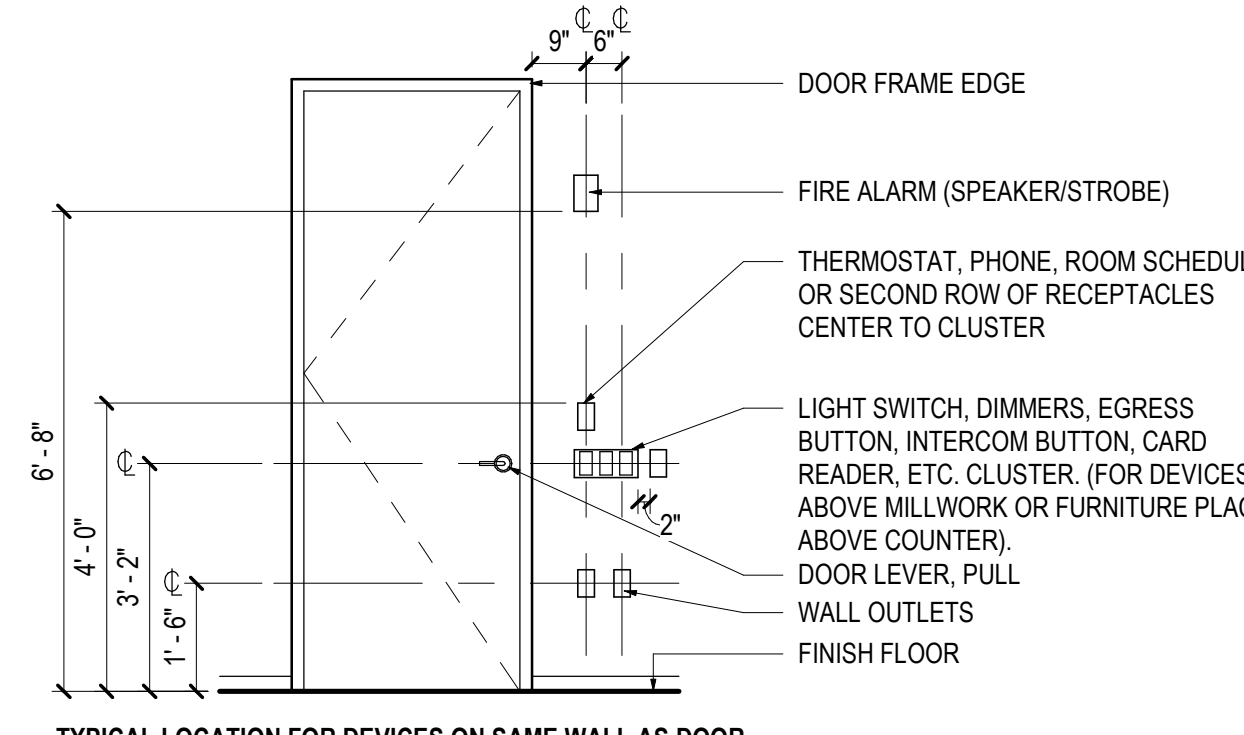
SINK



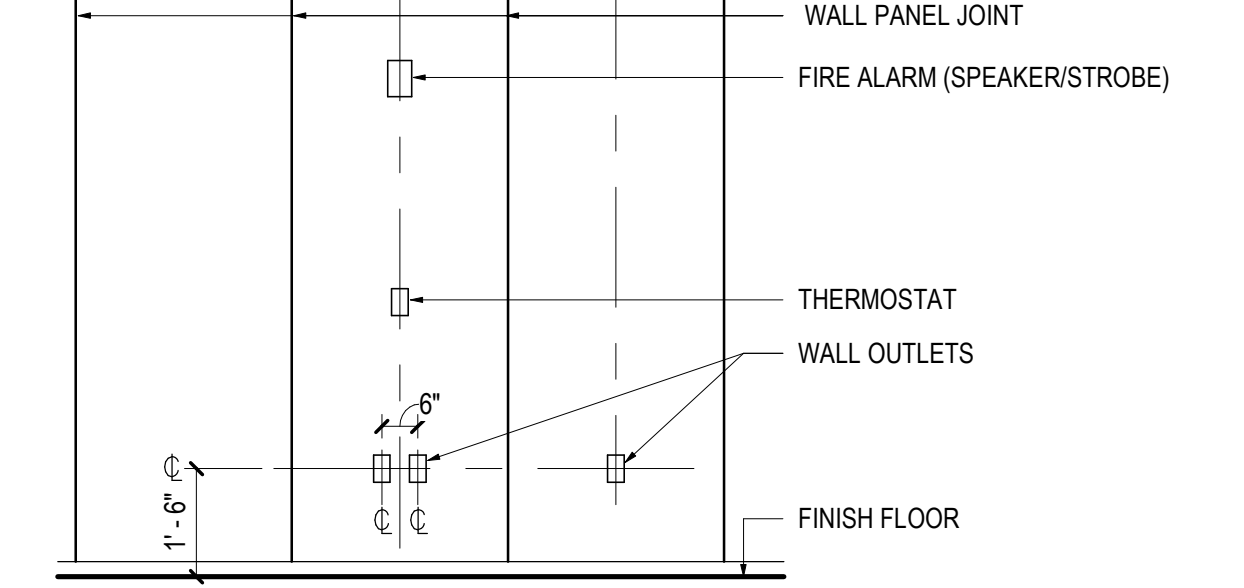
WATER CLOSET

TYPICAL MOUNTING HEIGHTS

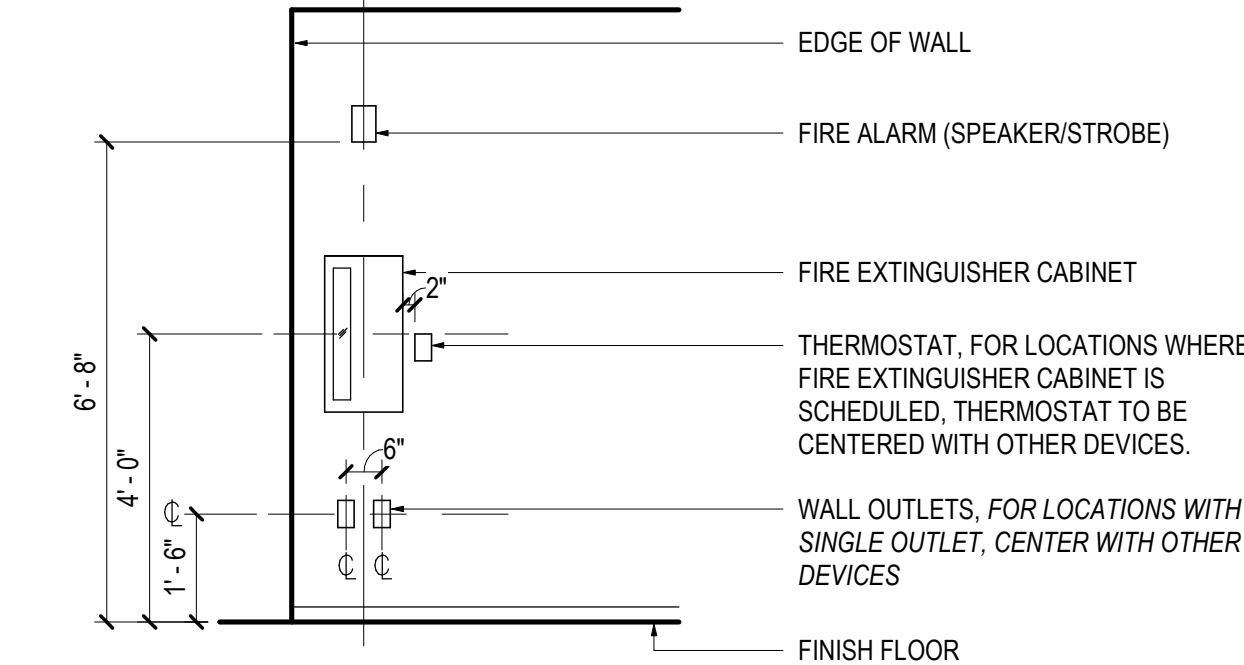
- GENERAL NOTES:
1. SEE ARCHITECT'S DRAWINGS FOR PLAN LOCATIONS
 2. ALIGN DEVICES VERTICALLY WHEN IN 4'-0" PROXIMITY
 3. FOR DEVICES ON WALLS UP TO 3'-0" WIDE, CENTER DEVICES SIMILAR TO COLUMN PLACEMENT SHOWN.
 4. FOR NON-DIMENSIONED DEVICES ON WALLS LONGER THAN 3'-0" LAYOUT DEVICES VERTICALLY ON ONE SIDE OF WALL. REFER TO PLANS FOR SIDE LOCATION OF WALL.
 5. FOR LOCATIONS WHERE MULTIPLE DEVICES ARE SCHEDULED AT SAME HEIGHT, DEVICES TO BE 2" APART.
 6. DEVICES ABOVE MILLWORK OR FURNITURE TO BE 6" ABOVE COUNTER TOP. COORDINATE WITH SCHEDULED MILLWORK AND FURNITURE.



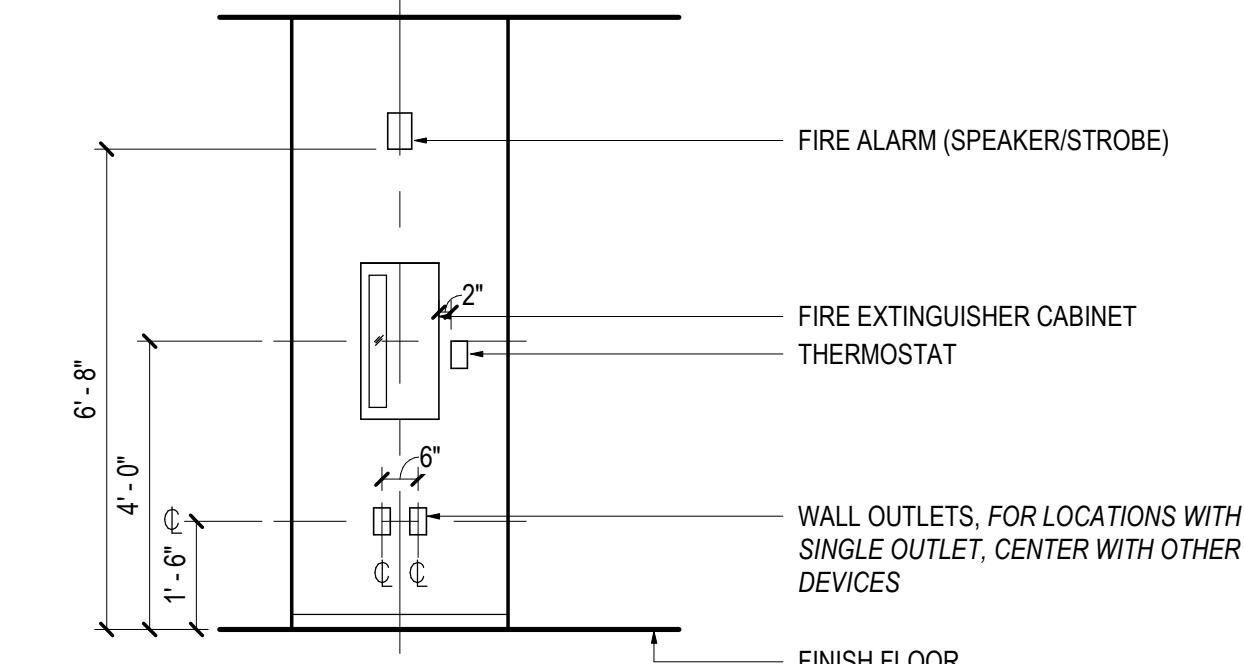
TYPICAL LOCATION FOR DEVICES ON SAME WALL AS DOOR



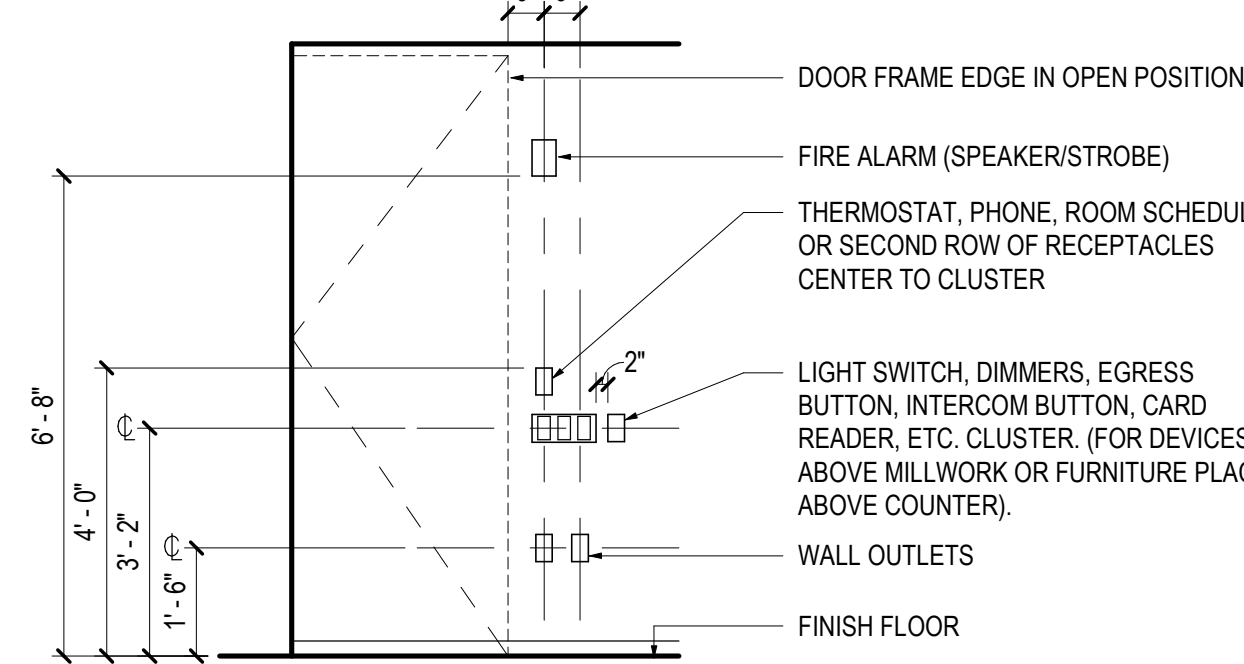
TYPICAL LOCATION FOR DEVICES AT WALL PANELS



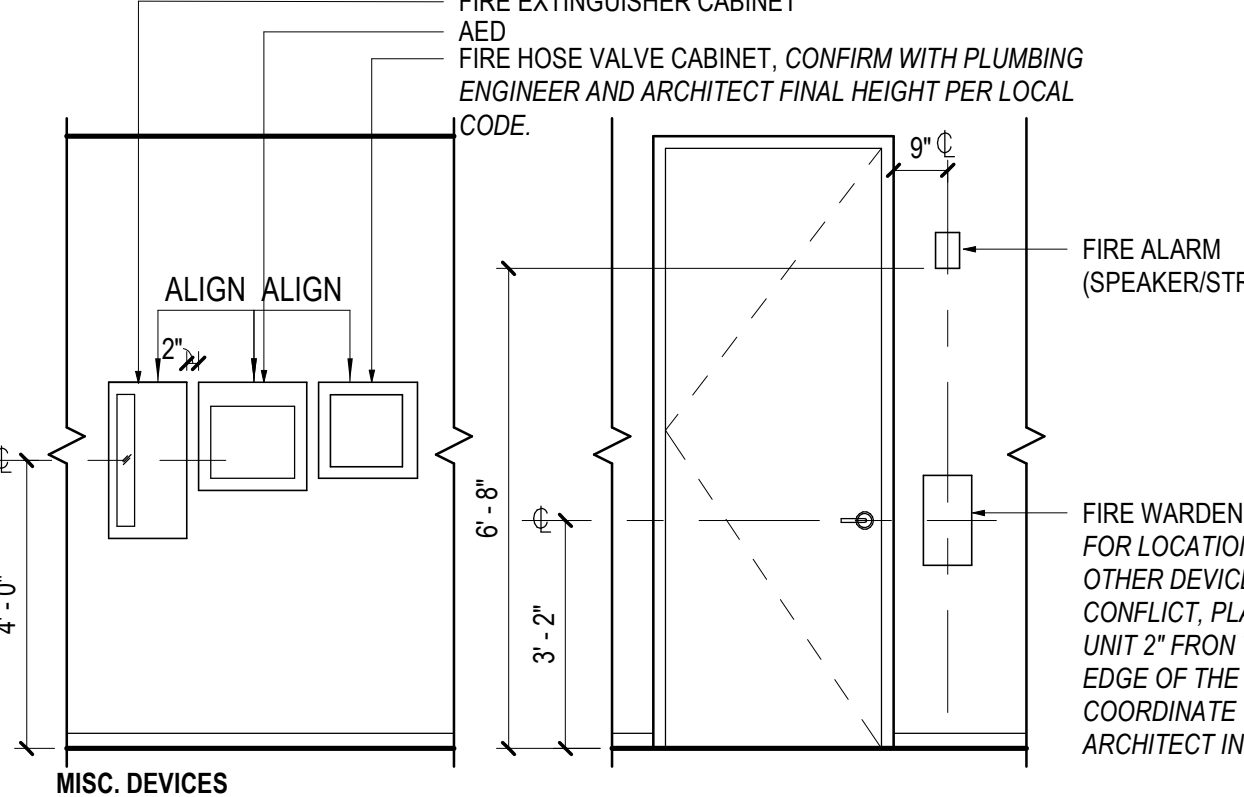
TYPICAL LOCATION FOR DEVICES AT END OF WALL



TYPICAL LOCATION FOR DEVICES AT COLUMNS



TYPICAL LOCATION FOR DEVICES ON WALL PERPENDICULAR TO DOOR



GENERAL NOTES

1. ALL WORK SHALL COMPLY WITH ALL LOCAL BUILDING CODES, LAWS, ORDINANCES, RULES AND REGULATIONS OF THE PUBLIC AUTHORITIES COVERING THE WORK.
2. OBTAIN AND PAY FOR ALL PERMITS, INSPECTIONS AND FINAL SIGN-OFFS REQUIRED BY THE PUBLIC AUTHORITIES COVERING THE WORK.
3. THE DRAWINGS AND SPECIFICATIONS ARE COMPLEMENTARY AND THEIR INTENT IS TO INCLUDE ALL ITEMS NECESSARY FOR THE PROPER EXECUTION AND COMPLETION OF THE WORK. THE CONTRACTOR IS RESPONSIBLE TO PROVIDE ALL LABOR, MATERIALS AND EQUIPMENT REQUIRED FOR THE CONSTRUCTION OF THE PROJECT. THE ORGANIZATION OF THE DRAWINGS AND PROJECT MANUAL SHALL NOT CONTROL. THE CONTRACTOR IN DIVIDING WORK AMONG THE SUBCONTRACTORS OR IN ESTABLISHING THE EXTENT OF WORK PERFORMED BY ANY TRADE, SHALL BE RESPONSIBLE FOR ALL COSTS TO COMPLETE THE WORK STATED IN ON THE CONTRACT DOCUMENTS BASED UPON THE OPTIMAL ESTABLISHED QUALITY STANDARD.
4. REVIEW DOCUMENTS, VERIFY DIMENSIONS AND FIELD CONDITIONS AND CONFIRM THAT WORK IS BUILDABLE AS SHOWN. THE CONTRACTOR SHALL REPORT ANY CONFLICTS AND/OR OMISSIONS TO THE ARCHITECT PRIOR TO PERFORMING ANY WORK IN QUESTION. OTHERWISE, THE CONTRACTOR SHALL BE RESPONSIBLE FOR ALL COSTS TO COMPLETE THE WORK STATED IN ON THE CONTRACT DOCUMENTS BASED UPON THE OPTIMAL ESTABLISHED QUALITY STANDARD.
5. SUBMIT REQUESTS FOR SUBSTITUTIONS, REVISIONS AND/OR CHANGES TO THE ARCHITECT, IN WRITING, FOR REVIEW PRIOR TO PURCHASE, FABRICATION OR INSTALLATION.
6. COORDINATE WORK WITH THE OWNER, INCLUDING SCHEDULING TIME AND LOCATIONS FOR DELIVERIES, BUILDING ACCESS, USE OF BUILDING SERVICES AND FACILITIES AND USE OF ELEVATORS AS TO MINIMIZE DISTURBANCES TO BUILDING FUNCTIONS AND OCCUPANTS.
7. OWNER WILL PROVIDE WORK NOTED AS "BY OTHERS" OR "NIC" UNDER SEPARATE CONTRACT. INCLUDE SCHEDULE REQUIREMENTS IN CONSTRUCTION PROGRESS SCHEDULE AND COORDINATE TO ASSURE PROPER SEQUENCE OF INSTALLATION.
8. MAINTAIN EXITS, EXIT LIGHTING, FIRE PROTECTIVE DEVICES AND ALARMS FOR DURATION OF WORK IN ACCORDANCE WITH APPLICABLE CODES AND ORDINANCES.
9. PROTECT AREA OF WORK AND ADJACENT AREAS FROM DAMAGE FOR DURATION OF WORK. ALL DAMAGE DUE TO IMPROPER PROTECTION SHALL BE REPAIRED AT NO ADDITIONAL COST TO THE OWNER.
10. MAINTAIN WORK AREAS SECURE AND LOCKABLE FOR THE DURATION OF WORK AND COORDINATE WITH OWNER/AND/OR TO ENSURE SECURITY.
11. PROVIDE A DULY AUTHORIZED FULL-TIME REPRESENTATIVE ON THE JOB SITE AT ALL TIMES FOR SUPERVISION OF CONSTRUCTION AS OUTLINED IN THE PROJECT MANUAL.
12. SUBMIT SAMPLES, DATA SHEETS AND SHOP DRAWINGS AS OUTLINED IN THE PROJECT MANUAL.
13. MAINTAIN THE CONSTRUCTION PREMISES IN A NEAT AND ORDERLY CONDITION AS OUTLINED IN THE PROJECT MANUAL.
14. DO NOT SCALE DRAWINGS. WRITTEN DIMENSIONS GOVERN. IN CASE OF CONFLICT, THE CONTRACTOR SHALL SUBMIT A WRITTEN REQUEST FOR CLARIFICATION OR INFORMATION TO THE ARCHITECT. TELEPHONE INQUIRIES WILL NOT BE PERMITTED.

CONSTRUCTION NOTES

1. ALL DIMENSIONS ARE DIMENSIONED FROM FINISH FACE TO FINISH FACE, UNLESS OTHERWISE NOTED. MAINTAIN DIMENSIONS MARKED "CLEAR" OR "HOLD." ALLOW FOR THICKNESS OF FINISHES.
2. COORDINATE AND PROVIDE BLOCKING WITHIN PARTITIONS FOR ALL MILLWORK AND ITEMS ATTACHED OR MOUNTED TO WALLS OR CEILINGS.
3. UNDERCUT OF DOORS TO CLEAR TOP OF FLOOR FINISHES BY 1/4" UNLESS OTHERWISE NOTED.
4. ALL INTERIOR GLAZING SHALL BE SAFETY GLAZING IN ACCORDANCE WITH APPLICABLE CODES.
5. MARK THE LOCATION OF ALL PARTITIONS ON THE SLAB FOR REVIEW BY THE ARCHITECT PRIOR TO INSTALLATION. REVIEW SHALL BE FOR DESIGN INTENT. CONTRACTOR TO VERIFY ALL CONDITIONS IN ORDER TO ENSURE PROPER FIT.
6. ALL PARTITIONS SHALL BE PERPENDICULAR OR PARALLEL TO BUILDING CORE WALLS, UNLESS OTHERWISE NOTED.
7. HINGE FACE OF ALL DOOR OPENINGS SHALL BE LOCATED 6" FROM ADJACENT PERPENDICULAR WALL, UNLESS OTHERWISE NOTED.

REFLECTED CEILING NOTES

1. ARCHITECTURAL DRAWINGS ONLY INDICATE LOCATIONS OF ELECTRICAL, MECHANICAL, FIRE PROTECTION, AUDIO-VISUAL, AND SECURITY DEVICES. FOR SPECIFICATIONS AND DESIGN OF THESE SYSTEMS REFER TO THE ENGINEERING AND/OR CONSULTANT DRAWINGS. ELECTRICAL CONTRACTOR SHALL BE RESPONSIBLE FOR VERIFYING ALL EXISTING CONDITIONS, FOR COMPLIING WITH ALL APPLICABLE CODES, FOR PROPER SIZING AND CIRCUITING OF WORK AND FOR PROVIDING RECORD "AS-BUILT" DRAWINGS.
2. VERIFY FIELD CONDITIONS AND LOCATIONS OF ALL PLUMBING, DUCTWORK, STRUCTURAL ELEMENTS AND OTHER APPLICABLE ITEMS. ARRANGE AND MODIFY NON-VISIBLE ITEMS TO INSURE ADEQUATE CLEARANCES FOR CEILING MOUNTED DEVICES AND FOR CEILING LAYOUT AS INDICATED.
3. MOUNT STANDARD SWITCHES AS INDICATED ON THE STANDARD MOUNTING HEIGHT ELEVATIONS, UNLESS OTHERWISE NOTED.
4. INDICATED DIMENSIONS ARE TO THE CENTERLINE OF A SINGLE SWITCH OR TO THE CENTERLINE OF A CLUSTER OF SWITCHES, UNLESS OTHERWISE NOTED.
5. INSTALL SWITCHES ON OPPOSITE SIDES OF PARTITIONS IN SEPARATE STUD CAVITIES, UNLESS OTHERWISE NOTED. DO NOT INSTALL BACK-TO-BACK.
6. PROVIDE MATCHING "LEVITON DECORA SERIES" TYPE COVER PLATES, SWITCHES AND RELATED ITEMS, COLOR: WHITE, UNLESS OTHERWISE NOTED. PROVIDE ALL DEVICES UNDER A COMMON FACEPLATE, UNLESS OTHERWISE NOTED.
7. ALL STROBE, SPEAKER/STROBE AND VISUAL ALARM DEVICE LOCATIONS INDICATED ON THE ARCHITECTURAL DRAWINGS ARE FOR DESIGN INTENT. SUBMIT "SHOP DRAWING" TO ARCHITECT AND ENGINEER FOR REVIEW PRIOR TO START OF WORK.
8. LOCATE HVAC DIFFUSERS/REGISTERS AND LIGHTING FIXTURES WITHIN GRID LINES, UNLESS OTHERWISE NOTED. LOCATE SPRINKLER HEADS, SPEAKERS, RECESSED LIGHT FIXTURES AND OTHER CEILING DEVICES IN THE CENTER OF ACoustICAL CEILING UNITS, UNLESS OTHERWISE NOTED.
9. FINISH OF HVAC DIFFUSERS/REGISTERS, LIGHT FIXTURE TRIM, DRAPERY POCKETS, SPEAKER GRILLES AND OTHER CEILING MOUNTED DEVICES TO MATCH CEILING GRID FINISH, UNLESS OTHERWISE NOTED.

FINISH NOTES

1. ENSURE SURFACES TO RECEIVE NEW FINISHES ARE CLEAN, TRUE AND FREE OF IRREGULARITIES. DO NOT PROCEED WITH WORK UNTIL UNSATISFACTORY CONDITIONS HAVE BEEN CORRECTED. STARTING OF WORK INDICATES INSTALLER'S ACCEPTANCE OF SUBSTRATE.
2. REPAIR EXISTING SURFACES SCHEDULED TO REMAIN AS REQUIRED FOR THE APPLICATION OF NEW FINISHES.
3. UNLESS OTHERWISE NOTED, PROVIDE MINIMUM THREE-COAT PAINT SYSTEMS FOR EACH SUBSTRATE.
4. PROVIDE STRAIGHT, FLUSH RESILIENT BASE AT CARPETED AREAS AND COVE, TOP SET RESILIENT BASE AT AREAS OF RESILIENT FLOORING, UNLESS OTHERWISE NOTED.
5. REFER TO PROJECT MANUAL FOR LEVEL OF FINISH FOR GYPSUM BOARD PARTITIONS/CEILINGS AS REQUIRED FOR SPECIFIED FINISHES.
6. ALL EXPOSED DUCTWORK, SPRINKLER PIPING, MISC. PIPING & CONDUIT IN AREAS OF NO FINISHED CEILING ARE TO BE PAINTED TO MATCH SLAB PAINT, U.O.C.

FURNITURE NOTES

1. FURNITURE IS INDICATED FOR INFORMATIONAL PURPOSES ONLY.
2. CONTRACTOR TO COORDINATE LAYOUT OF FURNITURE WITH FURNITURE MANAGER SUPPLIER PRIOR TO INSTALLATION OF WALL & FLOOR MOUNTED DEVICES.

POWER & COMMUNICATIONS NOTES

1. COORDINATE INSTALLATION OF TELECOMMUNICATIONS, DATA, AUDIO-VISUAL AND SECURITY SYSTEMS.
2. VERIFY EQUIPMENT SPECIFICATIONS, POWER AND INSTALLATION REQUIREMENTS WITH MANUFACTURER TO ENSURE PROPER FIT AND FUNCTION.
3. MOUNT STANDARD WALL OUTLETS, STROBES, THERMOSTATS AND OTHER DEVICES AS INDICATED ON THE STANDARD MOUNTING HEIGHT ELEVATIONS, UNLESS OTHERWISE NOTED. ALL LOCATIONS TO BE CONFIRMED BY THE ARCHITECT IN THE FIELD PRIOR TO INSTALLATION.
4. INDICATED DIMENSIONS ARE TO THE CENTERLINE OF AN INDIVIDUAL OUTLET OR TO THE CENTERLINE OF A CLUSTER OF OUTLETS, UNLESS OTHERWISE NOTED.
5. INSTALL OUTLETS ON OPPOSITE SIDES OF PARTITIONS IN SEPARATE STUD CAVITIES, UNLESS OTHERWISE NOTED. DO NOT INSTALL BACK-TO-BACK.
6. PROVIDE MATCHING "LEVITON DECORA SERIES" TYPE COVER PLATES, RECEPTACLES AND RELATED ITEMS, COLOR: WHITE, UNLESS OTHERWISE NOTED. PROVIDE ALL DEVICES UNDER A COMMON FACEPLATE, UNLESS OTHERWISE NOTED.
7. ARCHITECTURAL DRAWINGS ONLY INDICATE DEVICE LOCATIONS FOR ELECTRICAL, TELECOMMUNICATION, AUDIO-VISUAL AND SECURITY DEVICES. ELECTRICAL CONTRACTOR SHALL BE RESPONSIBLE FOR VERIFYING ALL EXISTING CONDITIONS, FOR COMPLIING WITH ALL APPLICABLE CODES, FOR PROPER SIZING AND CIRCUITING OF WORK AND FOR PROVIDING RECORD "AS-BUILT" DRAWINGS.
8. FOR ALL LOCATIONS OF CORE DRILLS, OUTLET DEVICES ARE TO BE FLUSH WITH FINISHED FLOOR, UNLESS OTHERWISE NOTED. PRIOR TO CORING OF SLAB, COORDINATE LAYOUT OF ALL FURNITURE ITEMS AND PARTITIONS ON THE SLAB. REVIEW ALL LOCATIONS WITH ARCHITECT AND COORDINATE LOCATIONS WITH OWNER/CLIENT.
9. FOR ALL LOCATIONS REQUIRING CHASING OF THE EXISTING FLOOR SLAB, OUTLET DEVICES ARE TO BE FLUSH WITH FINISHED FLOOR, UNLESS OTHERWISE NOTED. DEVICES SHALL BE FED THROUGH CONDUIT WITHIN THE SLAB AND TIED FROM THE NEAREST ADJACENT PARTITION. REFER TO ENGINEERING DRAWINGS FOR ADDITIONAL INFORMATION.
10. FURNITURE IS INDICATED FOR GENERAL REFERENCE ONLY.
11. ALL ELECTRIC LOCKSETS, ELECTRIC STRIKES AND/OR MAGNETIC LOCKS, IN THE PATH OF EGRESS, SHALL BE TIED TO THE BUILDING FIRE ALARM SYSTEM. REFER TO ENGINEERING DRAWINGS FOR ADDITIONAL INFORMATION.

ABBREVIATIONS

A		INT	INTERIOR
ACCESS	ACCESSORY	INFILTR	INFILTRATION
ACQ/IS	ACQUISITION	J	JANITOR
AF	ABOVE FINISHED FLOOR	K	KITCHEN
AL	ALUMINUM	L	LAVATORY
ALT	ALTERNATE	LB	LOAD BEARING
ANNOUNC	ANNUNCIATOR	E	EMBROIDERED
ANOD	ANODIZED	LT	LIGHT
APPL	APPLIANCE	LV/LG	LEVELING
ARCH	ARCHITECT(URAL)	LVT	LOUVER
AUTO	AUTOMATIC	M	MAXIMUM
AVG	AVERAGE	MAX	MANUFACTURED
AND	AND	MFR	MANUFACTURER
B		MECH	MECHANICAL
BLDG	BUILDING	MTL	METAL
BOLD	BOLLARD	MEMB	MEMBRANE
BD	BOARD	MEZZ	MEZZANINE
BLKG	BLOCKING	MIN	MINIMUM
BRODM	BROADLOOM	MISC	MISCELLANEOUS
BU	BUILT UP	MLWK	MILLWORK
C		MOIST	MOISTURE
CAB	CABINET	MOT	MOTORIZED
CPT	CARPET	MTD	MOUNTED
CEM	CEMENT(T/US)	N	NOT IN CONTRACT
CER	CERAMIC	NC	NO NUMBER
CLS	CEILING	NO	NOT TO SCALE
COATG	COATING	O	
COLG	COILING	ORNA	ORNAMENTAL
CONC	CONCRETE	OVFL	OVERFLOW
CONSTR	CONSTRUCTION	OVHD	OVERHEAD
CONT	CONTINUOUS(ATION)	OPNG	OPENING(S)
CONTR	CONTRACTOR	OPR	OPERABLE
COV	COVER	P	
CMU	CONCRETE MASONRY UNIT	PTN	PARTITION
D		PEDSTR	PEDESTRIAN
DBL	DOUBLE	PFD	PARTICLE BOARD
DEPT	DEPARTMENT	PNL	PANEL
DES	DESIGNED	POLYST	POLYSTYRENE
DTL	DETAIL	PORT	PORTABLE
DF	DRINKING FOUNTAIN	PREFIN	PREFINISHED
DIA	DIAMETER	PREFAB	PREFABRICATED
DIFF	DIFUSER	PLAM	PLASTIC LAMINATE
DM	DIMENSION	PLAS	PLASTER
DISP	DISPENSER	PLSTC	PLASTIC
DIV	DIVISION	PLYWOD	PLYWOOD
DN	DOWN	PRCTCN	PROTECTION
\$	DOLLAR (US CURRENCY)	R	
DR	DOOR	RDR	READER
DSCON	DISCONNECT	RECES	RECESSED
DWG	DRAWER	RECP	RECEPTACLE
E		REF	REFERENCE
ELAST	ELASTOMERIC	REFL	REFLECTED
ELEC	ELECTRICAL	REFR	REFRIGERATOR
EMBED	EMBEDDED(ING)	REQD	REQUIRED
ENGR	ENGINEER(ED)	RESIS	RESISTANT(IVE)
ENTR	ENTRANCE	REIN	REINFORCED(ING/MENT)
EQ	EQUAL	RESIL	RESILIENT
EQUIP	EQUIPMENT	RFG	ROOFING
EXIST	EXISTING	RM	ROOM
EXPJT	EXPANSION JOINT	RO	ROUGH OPENING
EXPS	EXPOSED	S	
EXT	EXTERIOR	SCR	SCORIE
F		SECUR	SECURITY
FAB	FABRICATION	SF	SQUARE FEET
FD	FLOOR DRAIN	SG	SINGLE
FE	FIRE EXTINGUISHER	SHORG	SHORING
FEKC	FIRE EXTINGUISHER AND CABINET	SM	SIMILAR
FHC		SST	STAINLESS STEEL
FHC	FIRE HOSE AND CABINET	STD	STANDARD
FIN	FINISH	STL	STEEL
FLDG	FOLDING	STRFR	STOREFRONT
FLC	FIREPLACE	STRUCT	STRUCTURAL
FR	FIRE RATING(ED)	SURF	SURFACE
FRMG	FRAMING	SUSP	SUSPENDED
FXD	FIXED	SYS	SYSTEMS
FXTR	FIXTURE	T	
FLR	FLOOR(ING)	THK	THICK
FURN	FURNITURE	TLT	TOILET
FURF	FURNITURE COVERING	TRAF	TRAFFIC
G		TRANS	TRANSPARENT
GA	GAUGE	TRTD	TREATED
GFRG	GLASS FIBER REINFORCED CONCRETE	TAG	TONGUE AND GROOVE
GFRG	GLASS FIBER REINFORCED GYPSUM	TYP	TYPICAL
GFRP	GLASS FIBER REINFORCED PLASTER	U	
GL	GLASS	UNDRLAY	UNDERLAYMENT
GR	GRADE(ING)	UTL	UTILITY
GYP	GYPSUM	UNO	UNLESS NOTED OTHERWISE
H		V	
HD	HEAD	VEH	VEHICLE
HDWD	HARDWOOD	VERT	VERTICAL
HWIE	HARDWARE	VIF	VERIFY IN FIELD
HM	HOLLOW METAL	W	
HORIZ	HORIZONTAL	WC	WITH
HVAC	HEATING VENTILATING AND AIR CONDITIONING	WD	WATER CLOSET
I		WDO	WOOD
INFO	INFORMATION	WOW	WINDOW
INSTRUM	INSTRUMENT(ATION)	WTC	WITHOUT
INSUL	INSULATION	WT	WEIGHT
INTLK	INTERLOCK(ING)	WTRPRF	WATERPROOFING