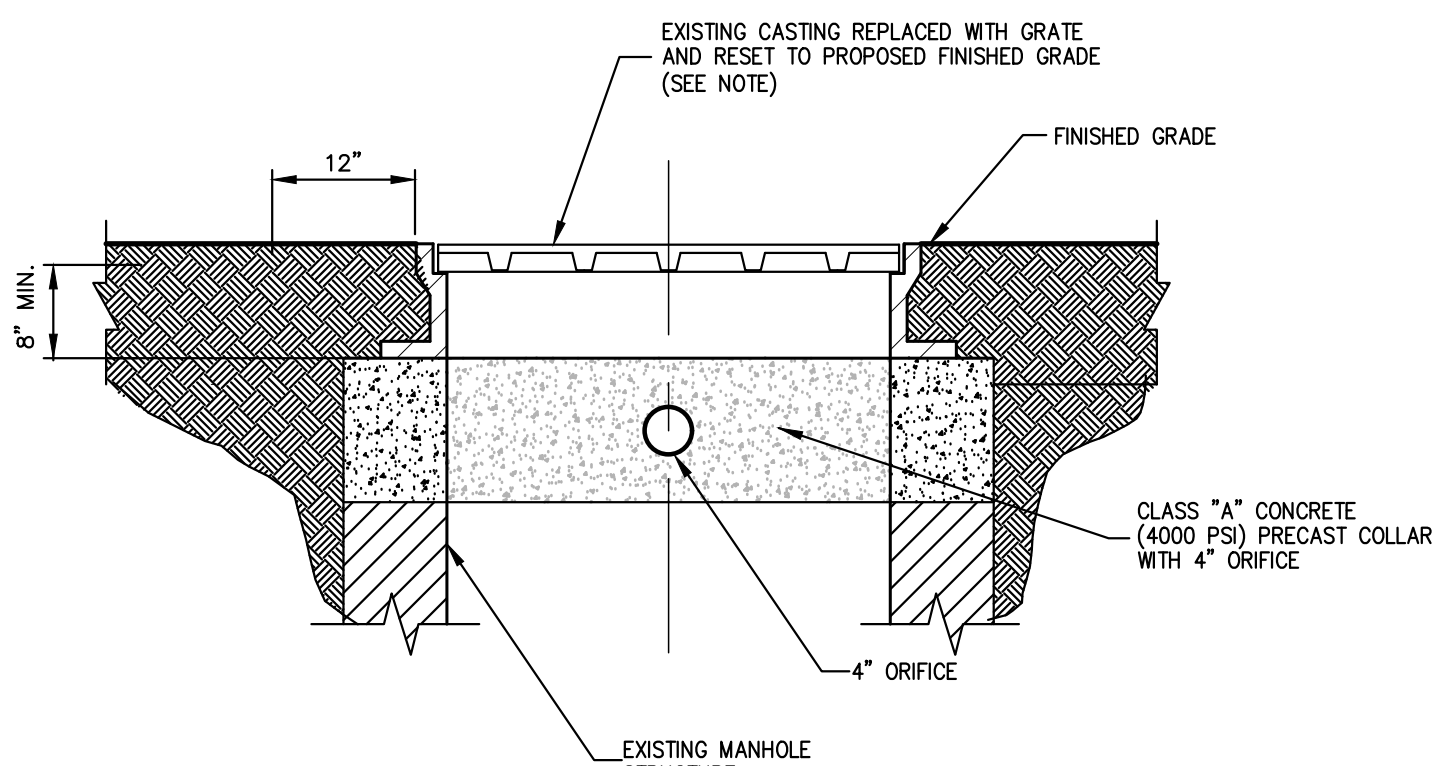
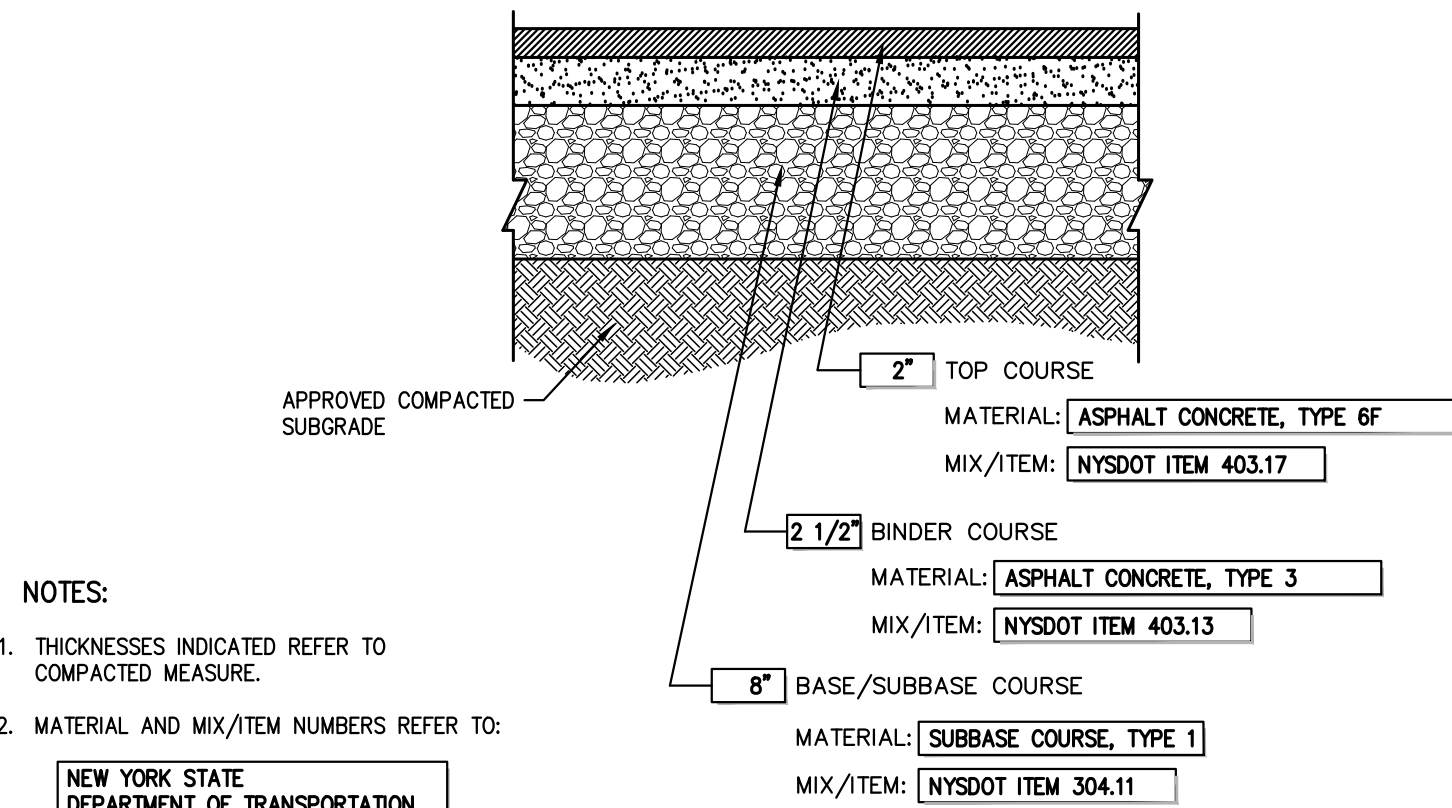


EXISTING STRUCTURE IN DRY SWALE

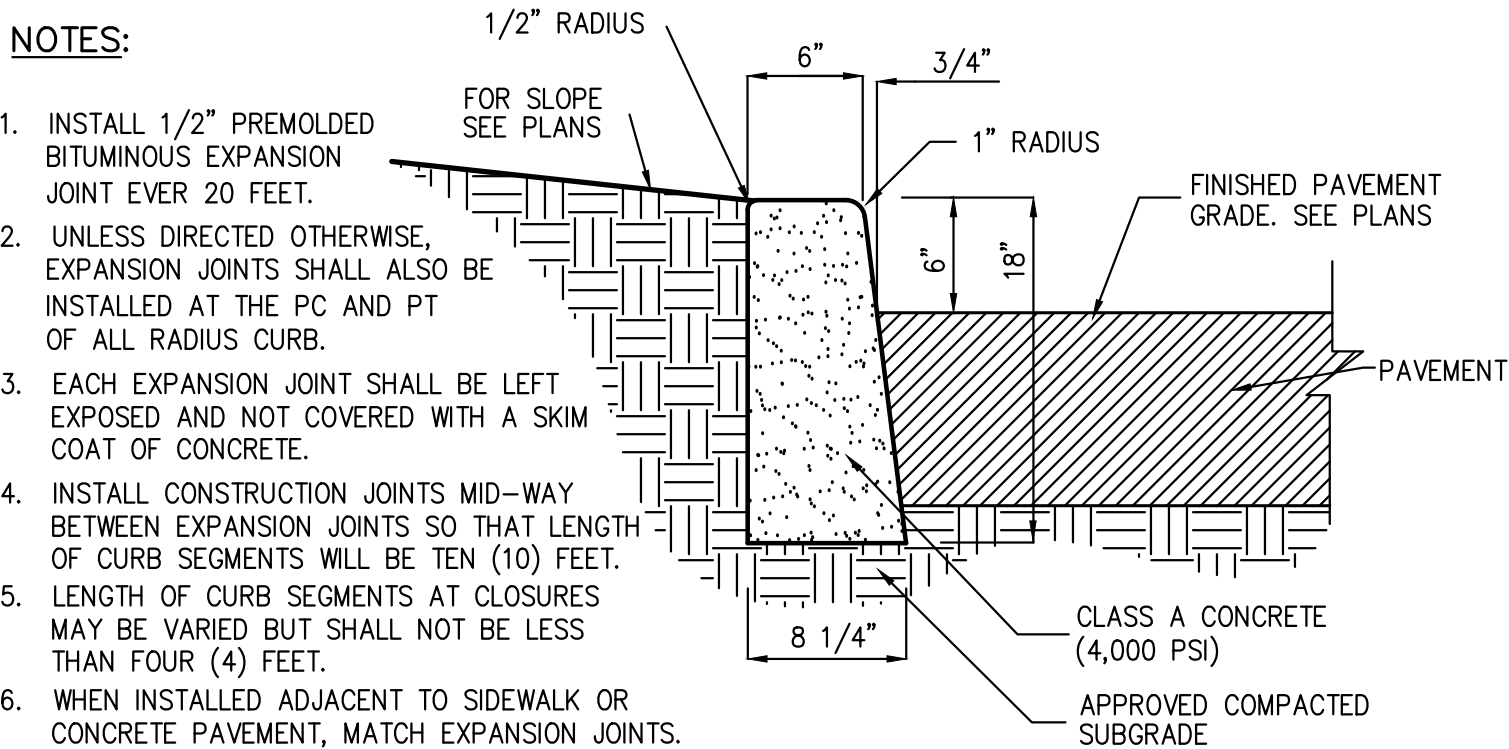


EXISTING STRUCTURE IN BIORETENTION BASIN

NOTE:
1. IF EXISTING CASTING IS UNFIT FOR RESETTING IN THE NEW CONSTRUCTION, AS DETERMINED BY THE OWNER'S FIELD REPRESENTATIVE, CONTRACTOR SHALL FLUSH AND SET NEW CASTING.

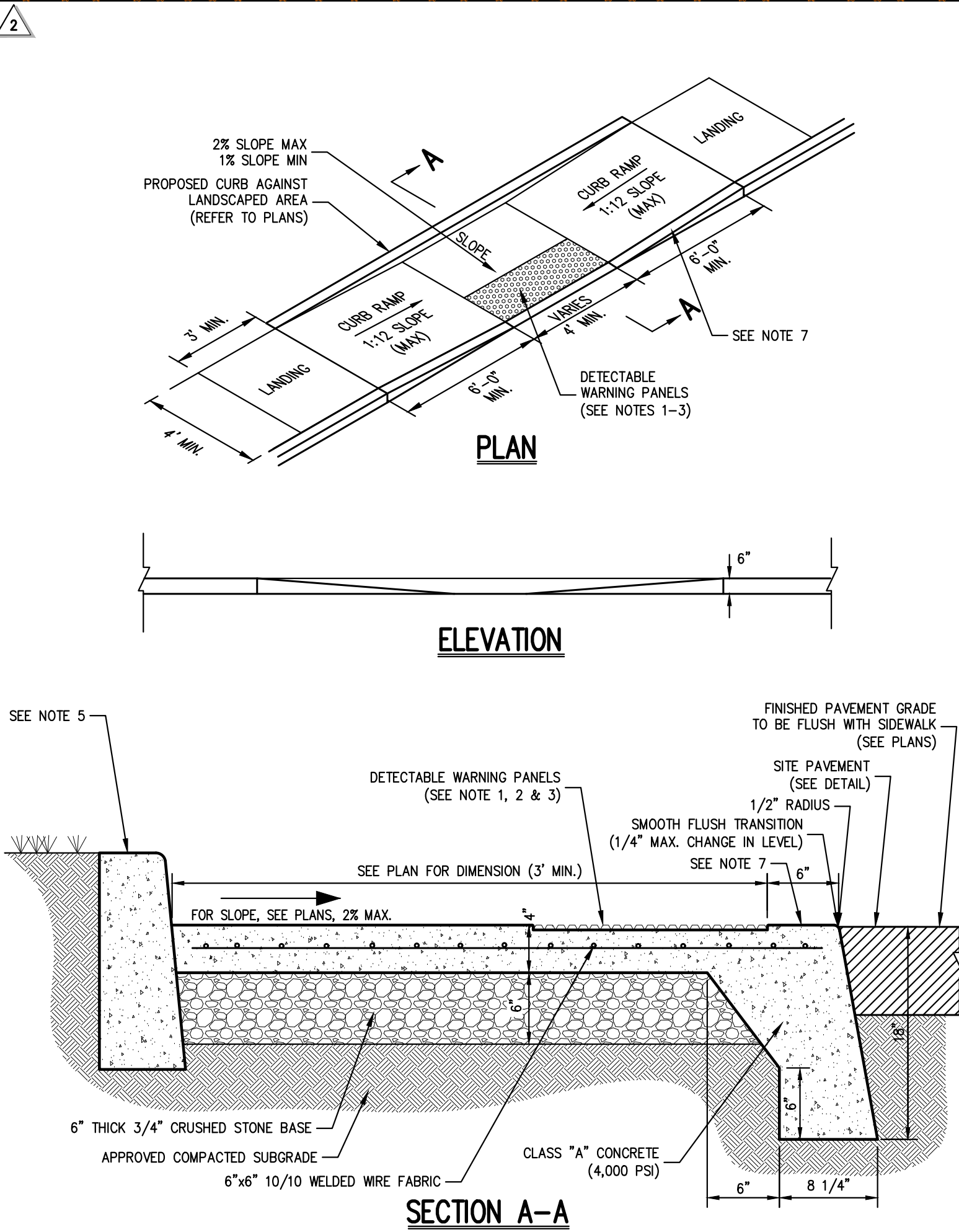


SITE PAVEMENT



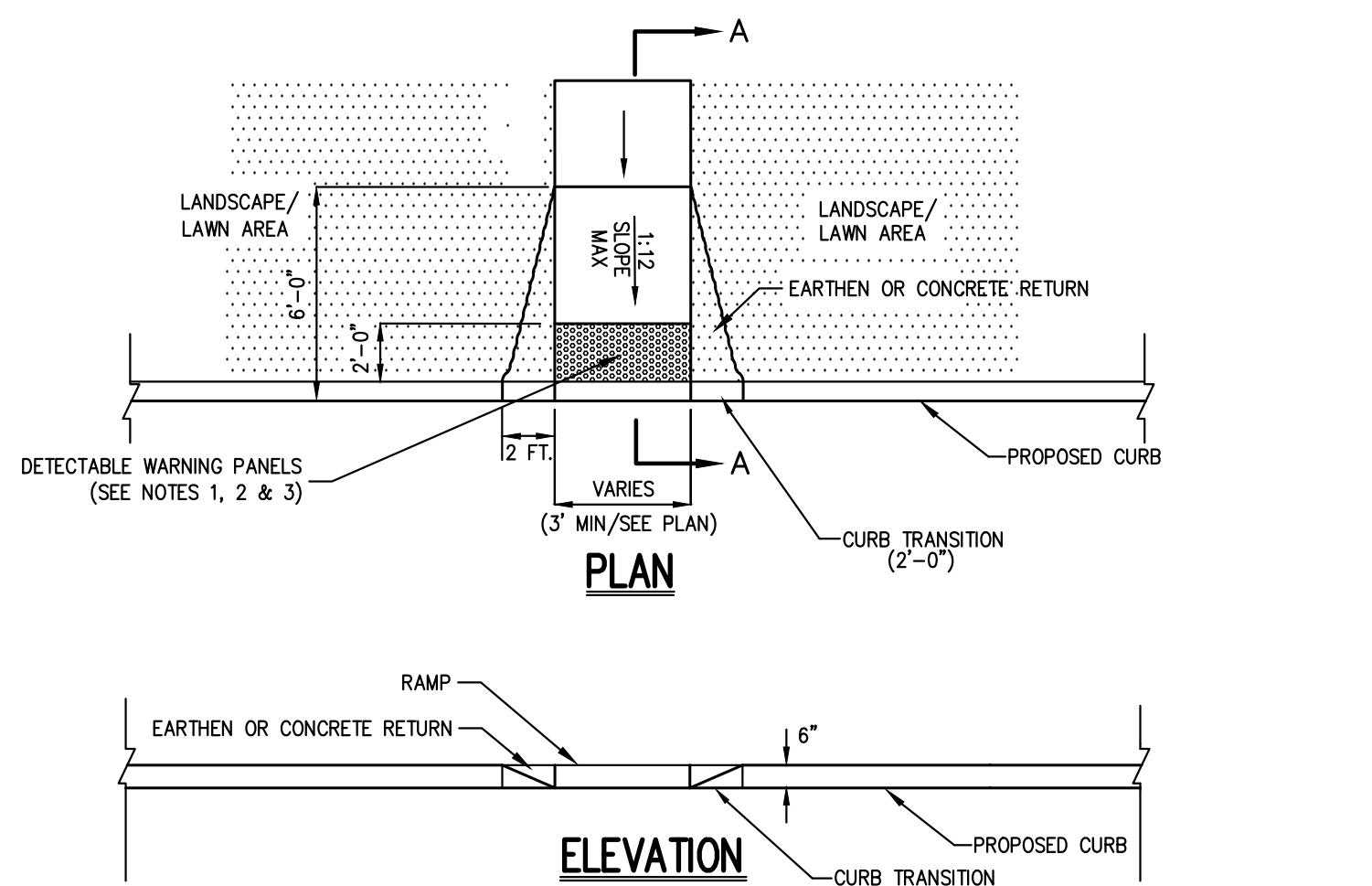
NOTES:
1. INSTALL 1/2" PREMOULDED BITUMINOUS EXPANSION JOINT EVERY 20 FEET.
2. UNLESS DIRECTED OTHERWISE, EXPANSION JOINTS SHALL ALSO BE INSTALLED AT THE PC AND PT OF ALL RADIUS CURB.
3. EACH EXPANSION JOINT SHALL BE LEFT EXPOSED AND NOT COVERED WITH A SKIM COAT OF CONCRETE.
4. INSTALL CONSTRUCTION JOINTS MID-WAY BETWEEN EXPANSION JOINTS SO THAT LENGTH OF CURB SEGMENTS WILL BE TEN (10) FEET.
5. LENGTH OF CURB SEGMENTS AT CLOSURES MAY BE VARIED BUT SHALL NOT BE LESS THAN FOUR (4) FEET.
6. WHEN INSTALLED ADJACENT TO SIDEWALK OR CONCRETE PAVEMENT, MATCH EXPANSION JOINTS.

24

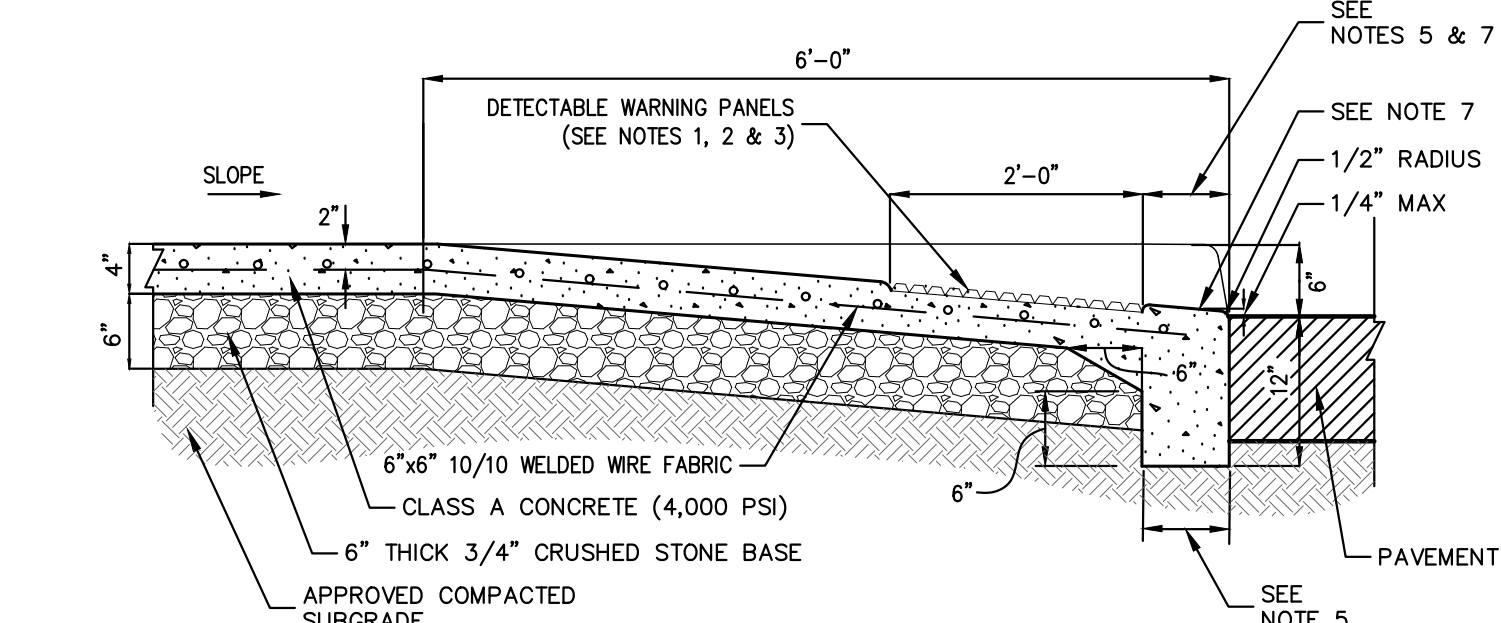


SECTION A-A

NOTES:
1. RAMP SHALL HAVE CAST IN PLACE DETECTABLE/TACTILE WARNING SURFACE TILES AS MANUFACTURED BY ARMOR-TILE AND SHALL CONSIST OF RAISED TRUNCATED DOMES WITH A DIAMETER OF NOMINAL 0.9 INCHES, A HEIGHT OF NOMINAL 0.2 INCHES AND A CENTER TO CENTER SPACING OF NOMINAL 1.07 INCHES (HTTPS://ARMOR-TILE.COM/CAST-IN-PLACE/) OR APPROVED EQUAL.
2. DETECTABLE WARNING PANELS SHALL CONTRAST VISUALLY WITH ADJOINING SURFACES, EITHER LIGHT-ON-DARK OR DARK-ON-LIGHT FOR CONCRETE SIDEWALK, COLOR SHALL BE DARK GRAY (ARMOR-TILE COLOR CODE "D0").
3. 2'-0" DEPTH OF PANELS TO BE INSTALLED DIRECTLY BEHIND CURB AND IN ACCORDANCE WITH MANUFACTURER'S SPECIFICATIONS.
4. A MINIMUM OF 3 FEET CLEAR SHALL BE MAINTAINED AT ANY PERMANENT OBSTACLE IN ACCESSIBLE ROUTE (I.E., HYDRANTS, UTILITY POLES, TREE WELLS, SIGNS, ETC.).
5. SEE CAST-IN-PLACE CURB DETAIL FOR DIMENSIONS.
6. RAMP, CURB AND ADJACENT PAVEMENTS SHALL BE GRADED TO PREVENT PONDING.
7. CONTRACTOR TO ENSURE TOP OF CURB MATCHES SLOPE OF RAMP.
8. PROVIDE JOINT SEALER & PREMOULDED EXPANSION JOINT AT ALL BLDG. WALLS, CONSTRUCTION JOINTS AND OTHER FIXED OBJECTS (HYDRANTS, LIGHT POLES, ETC.).
9. SIDEWALK SHALL HAVE LIGHT BROOM FINISH.
10. PROVIDE 1/2" PREMOULDED EXPANSION JOINTS AT 20 FOOT INTERVALS UNLESS OTHERWISE DIRECTED.
11. REINFORCEMENT SHALL NOT EXTEND THROUGH EXPANSION JOINTS.



SECTION A-A



DROP CURB & RAMP
(TYPE D/PARALLEL IN-LINE)

25

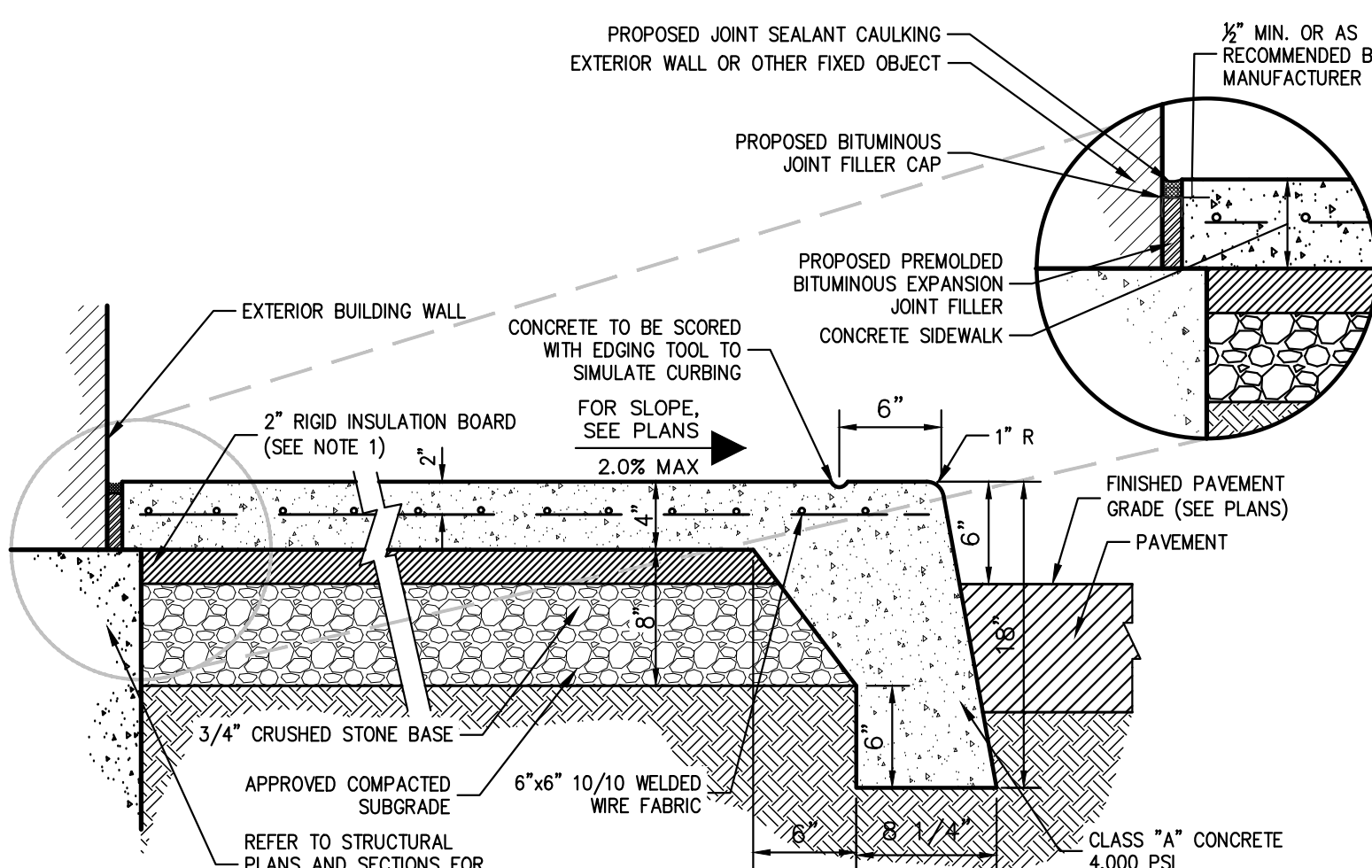
RAISE AND RESET MANHOLE CASTING

22

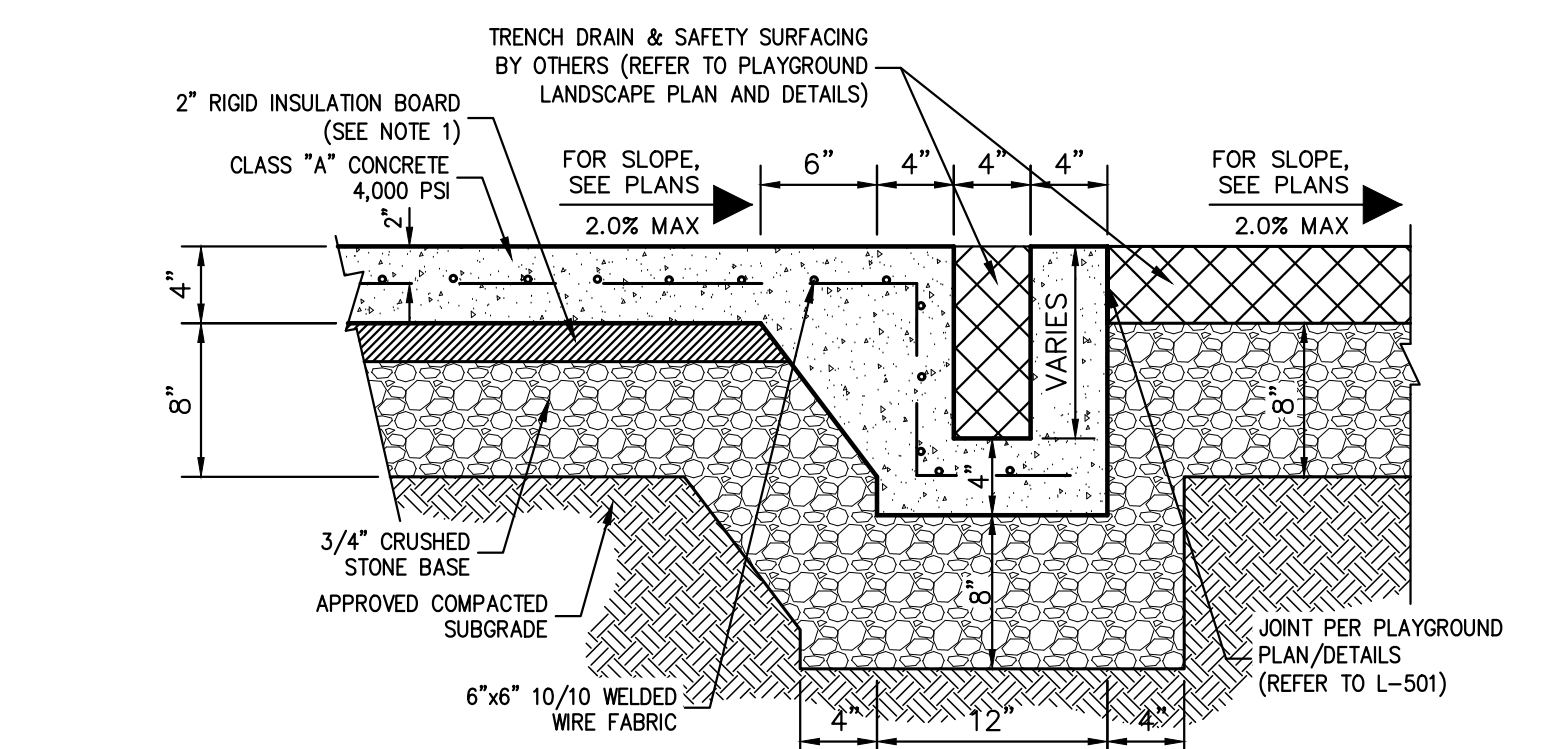
CAST-IN-PLACE CONCRETE CURB

23

DROP CURB & RAMP
(TYPE B/PERPENDICULAR)



BUILDING PERIMETER SIDEWALK AND MONOLITHIC CURB



BUILDING PERIMETER SIDEWALK AND PLAYGROUND

NOTES:
1. PROVIDE 2" RIGID INSULATION BOARD AT ALL DOORWAY OPENINGS AND EXTEND 8' MIN. IN ALL DIRECTIONS OR TO CONSTRUCTION/CONTRACTION JOINT, WHICHEVER IS GREATER.
2. JOINT SEALANT CAULKING SHALL BE SIKAFLEX-2C NS TO OR APPROVED EQUAL. COLOR SHALL BE GRAY AS APPROVED BY THE OWNER'S FIELD REPRESENTATIVE. PREMOULDED BITUMINOUS EXPANSION JOINT FILLER SHALL BE FLEXCELL OR APPROVED EQUAL.
3. PRIOR TO INSTALLING JOINT SEALANT, CONTRACTOR SHALL REMOVE TOP PORTION OF EXPANSION JOINT FILLER CAP AND THOROUGHLY CLEAN JOINT OF ANY DEBRIS.
4. PROVIDE JOINT SEALER & PREMOULDED EXPANSION JOINT AT ALL BLDG. WALLS, CONSTRUCTION JOINTS AND OTHER FIXED OBJECTS (HYDRANTS, LIGHT POLES, ETC.).
5. SIDEWALK SHALL HAVE LIGHT BROOM FINISH.
6. SIDEWALK CROSS SLOPE SHALL BE 1% MIN. 2% MAX.
7. FOR SIDEWALK WIDTH SEE PLAN. SIDEWALK SHALL HAVE A 3' MIN. WIDTH CLEAR FROM BACK OF CURBING.
8. CONTRACTION JOINTS SHALL BE EVERY 5' ON-CENTER WITH EXPANSION JOINTS EVERY 20' ON-CENTER.

BUILDING PERIMETER SIDEWALK

26

CONCRETE SIDEWALK

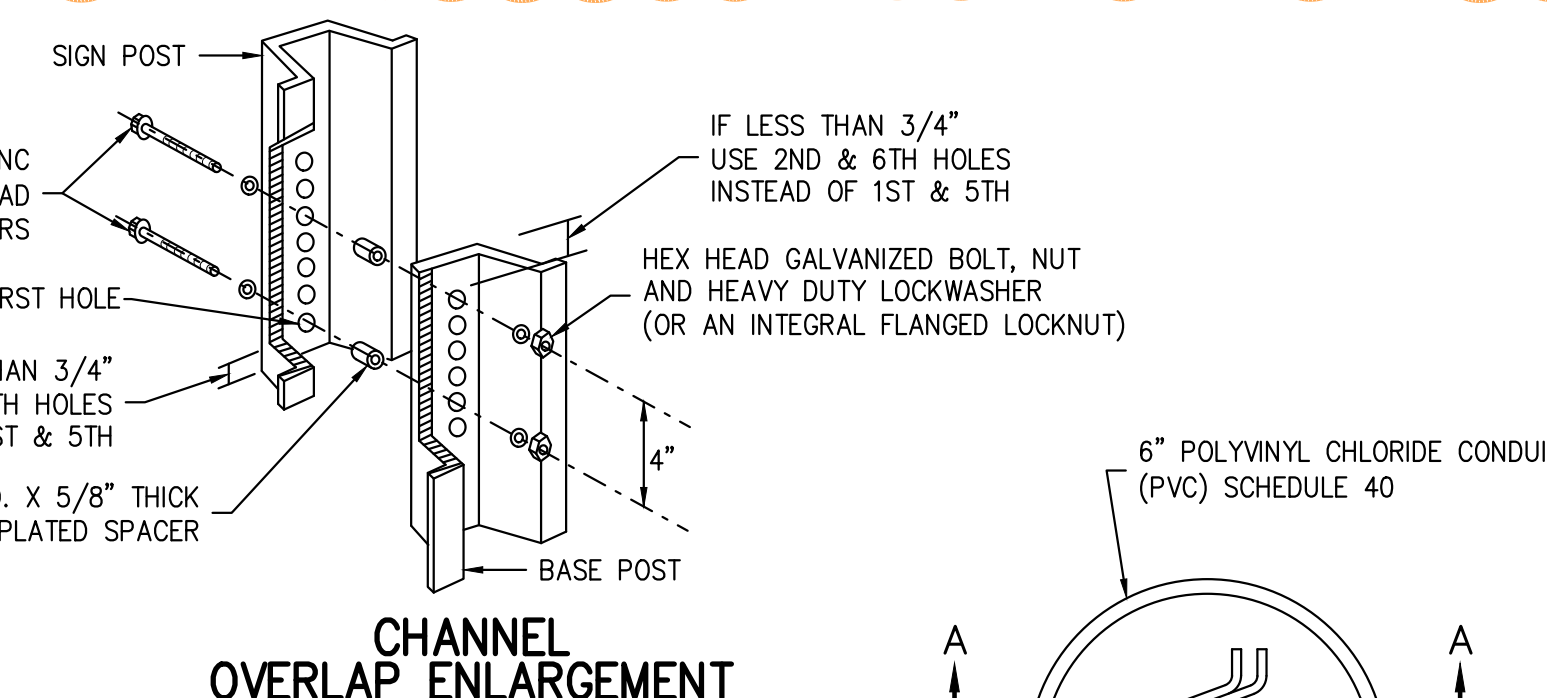
27

TRAFFIC SIGN POST
(BREAKAWAY STEEL CHANNEL)

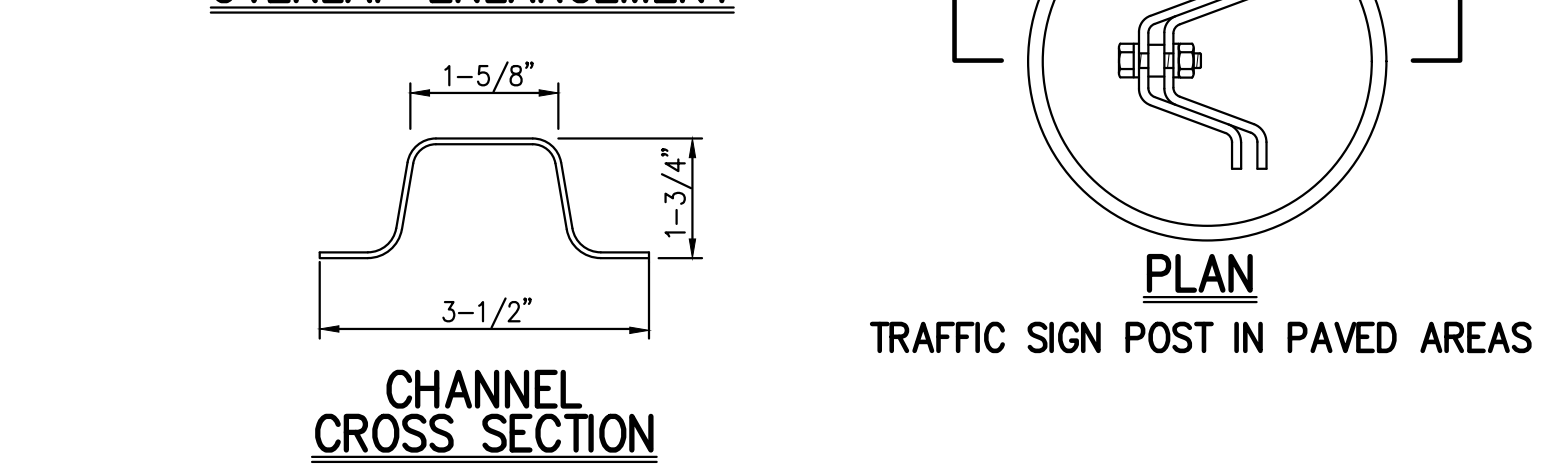
28

FINGER UNDERDRAIN

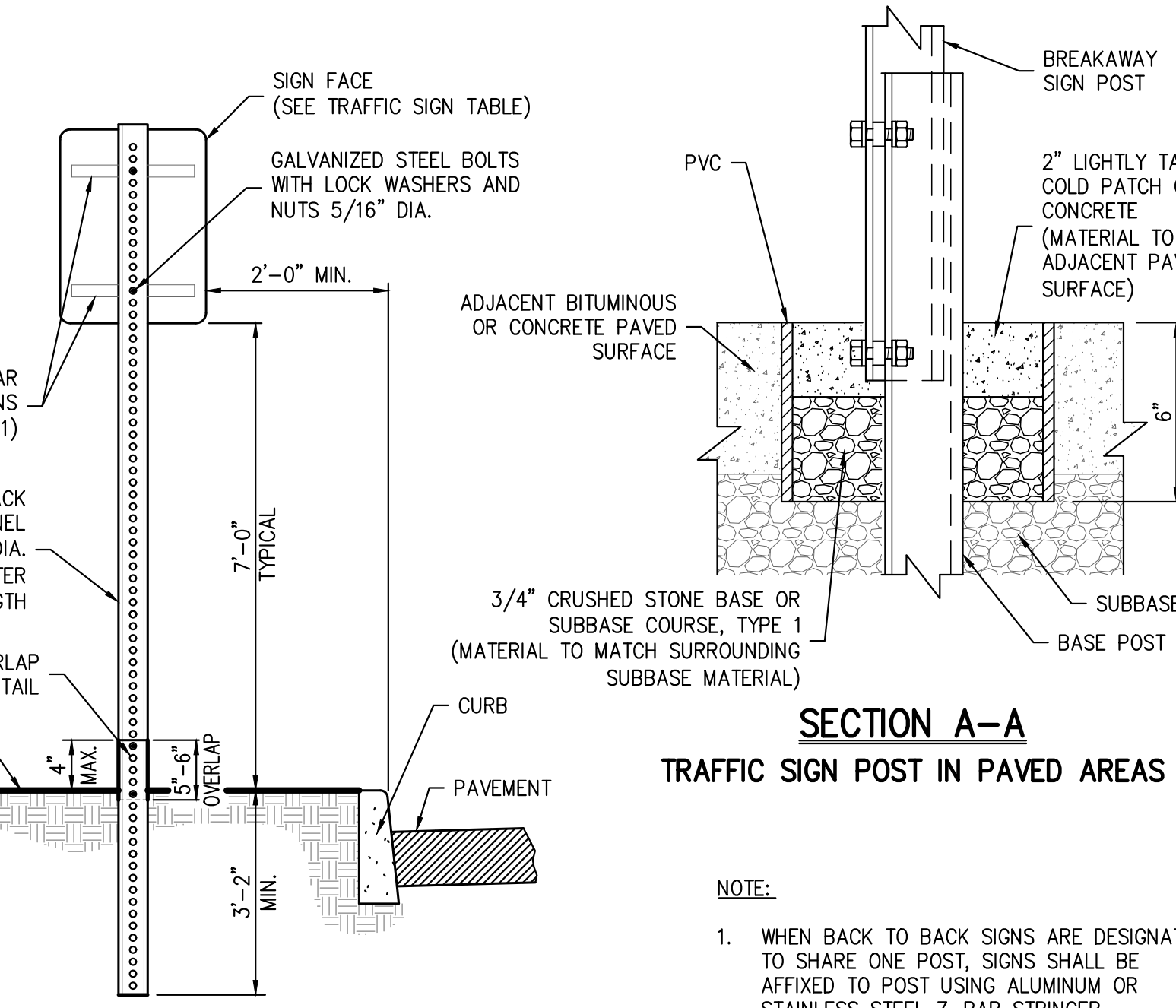
29



CHANNEL OVERLAP ENLARGEMENT



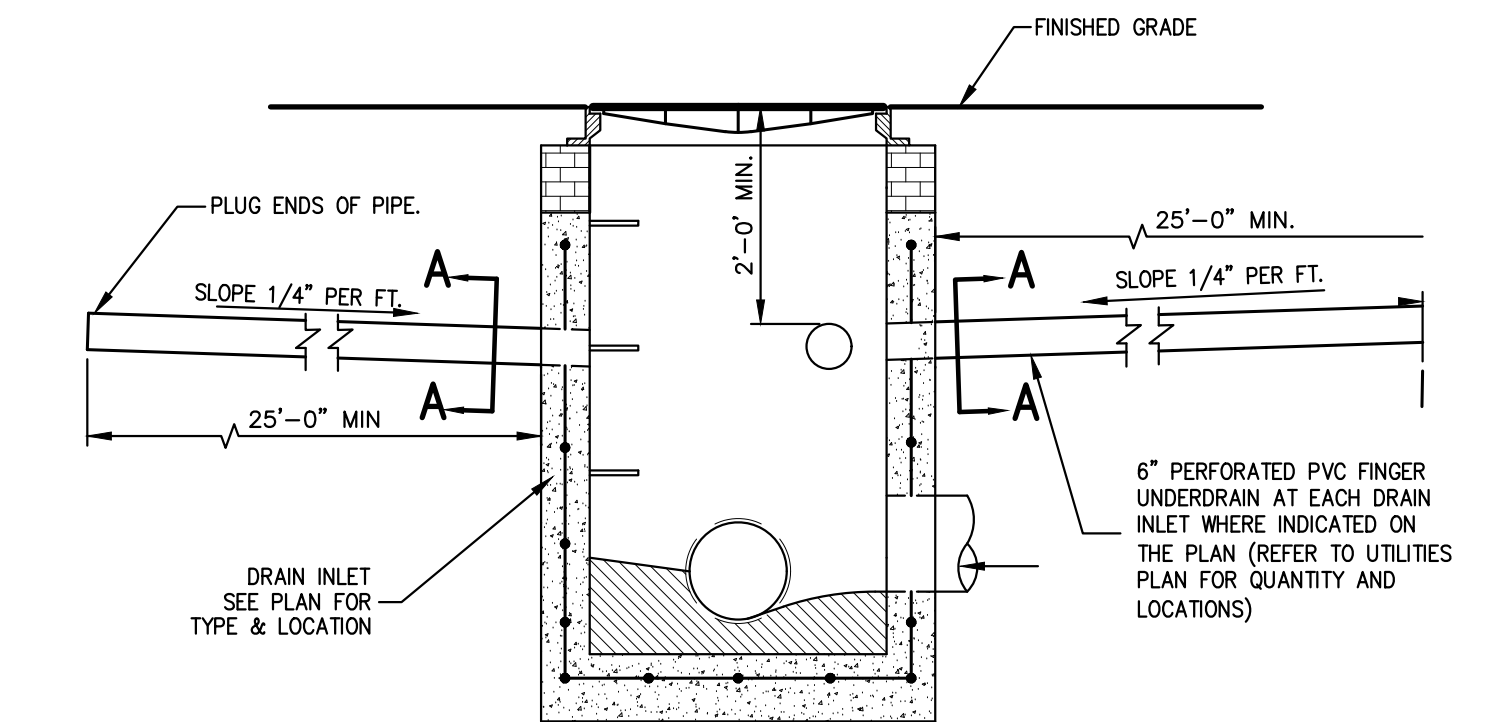
CHANNEL CROSS SECTION



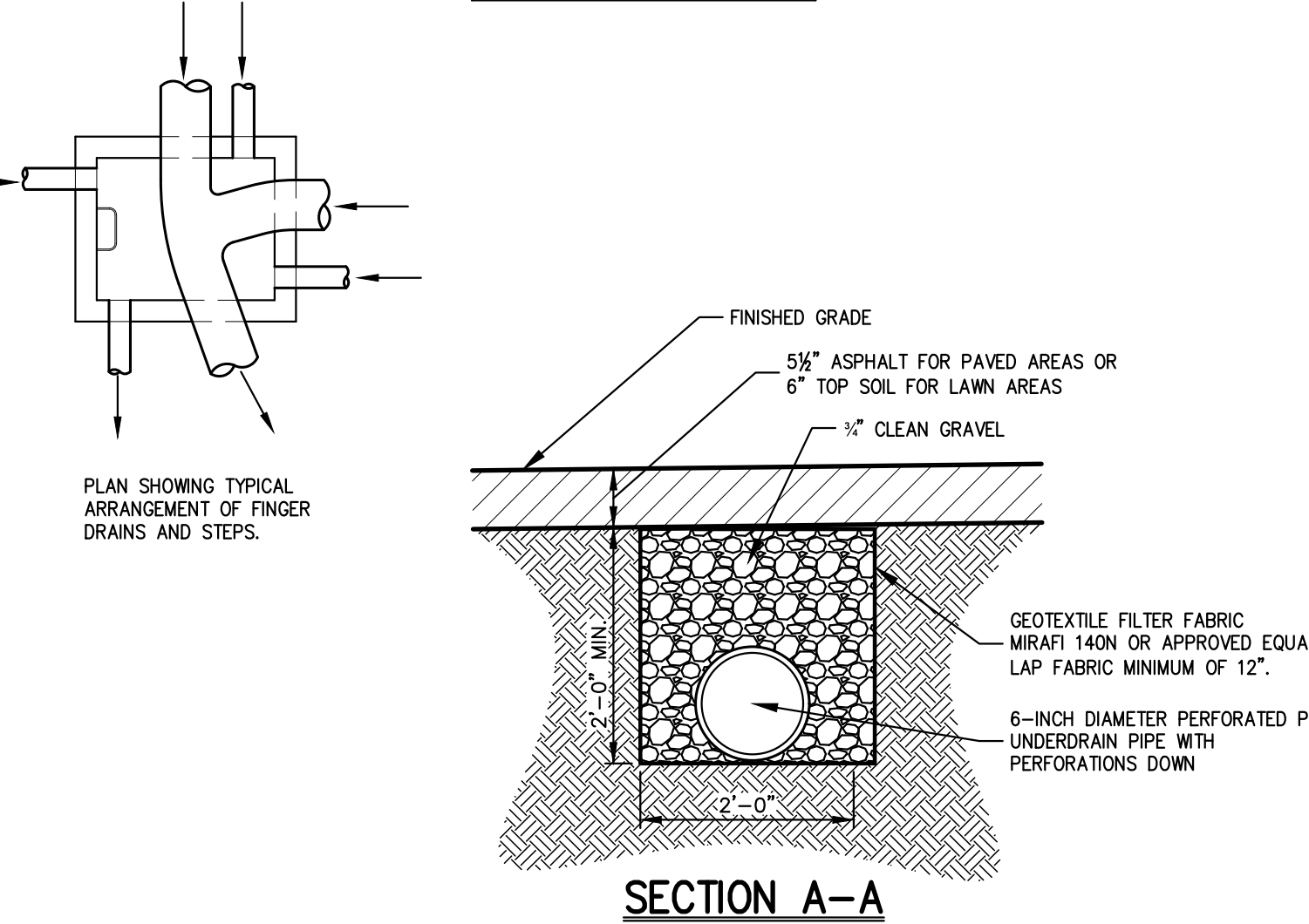
SECTION A-A

TRAFFIC SIGN POST IN PAVED AREAS

NOTES:
1. WHEN BACK TO BACK SIGNS ARE DESIGNATED TO SHARE ONE POST, SIGNS SHALL BE ATTACHED TO POST USING ALUMINUM OR STAINLESS STEEL Z-BAR STRINGER.
2. REFER TO GEOTECHNICAL DRAWINGS.



SECTION A-A



NOTES:
1. LOCATIONS OF FINGER DRAINS MAY VARY FROM THAT AS SHOWN DEPENDING UPON NUMBER AND SIZE OF STORM DRAIN LINES ENTERING AND EXITING THE STRUCTURE. REFER TO UTILITIES PLAN FOR LOCATION AND QUANTITY.
2. REFER TO GEOTECHNICAL DRAWINGS.

REGENERON
REAL ESTATE &
FACILITIES MANAGEMENT

777 Old Saw Mill River Road
Tarrytown, NY 10591-6707
T: 914.847.7400
F: 914.847.7991
www.regeneron.com

BUILDING #17
CAMPUS EXPANSION CHILD
DAY-CARE CENTER

899 OLD SAW MILL RIVER ROAD
MOUNT PLEASANT, NY 10591

Civil Engineer:

Site Development Consultants
120 Bedford Road
Armonk, NY 10504
914-273-5225
www.jmcpllc.com

Attorney:

DelBello Donnellan Weingarten Wise &
Wiederkehr, LLP
One North Lexington Avenue, 11th Floor
White Plains, New York 10601
Phone: (914) 681-0200

Geotechnical Engineer:

Carlin-Simpson & Associates
61 Main Street
Sayreville, NJ 08872
Phone: (732) 432-5757

Architect:

Gensler
1700 Broadway, Suite 400
New York, New York 10019
Phone: (212) 492-1400
Fax: (212) 492-1472

Landscape Architect (Playground):

Langan
21 Penn Plaza, 360 West 31st Street, 8th Floor
New York, New York 10001
Phone: (212) 479-5400
Fax: (212) 479-5444

MEP/IT/Security Engineer:

Cosentini Associates
498 Seventh Avenue
New York, New York 10018
Phone: (212) 615-3600
Fax: (212) 615-3700

No. Date Description

0 05/20/2022 ISSUED FOR PERMIT

1 06/20/2022 100% CONSTRUCTION DOCUMENTS

2 07/01/2022 100% CONSTRUCTION DOCUMENTS - 1

3 07/01/2022 100% CONSTRUCTION DOCUMENTS - 2

4 07/01/2022 100% CONSTRUCTION DOCUMENTS - 3

5 07/01/2022 100% CONSTRUCTION DOCUMENTS - 4

6 07/01/2022 100% CONSTRUCTION DOCUMENTS - 5

7 07/01/2022 100% CONSTRUCTION DOCUMENTS - 6

8 07/01/2022 100% CONSTRUCTION DOCUMENTS - 7

9 07/01/2022 100% CONSTRUCTION DOCUMENTS - 8

10 07/01/2022 100% CONSTRUCTION DOCUMENTS - 9

11 07/01/2022 100% CONSTRUCTION DOCUMENTS - 10

12 07/01/2022 100% CONSTRUCTION DOCUMENTS - 11

13 07/01/2022 100% CONSTRUCTION DOCUMENTS - 12

14 07/01/2022 100% CONSTRUCTION DOCUMENTS - 13

15 07/01/2022 100% CONSTRUCTION DOCUMENTS - 14

16 07/01/2022 100% CONSTRUCTION DOCUMENTS - 15

17 07/01/2022 100% CONSTRUCTION DOCUMENTS - 16

18 07/01/2022 100% CONSTRUCTION DOCUMENTS - 17

19 07/01/2022 100% CONSTRUCTION DOCUMENTS - 18

20 07/01/2022 100% CONSTRUCTION DOCUMENTS - 19

21 07/01/2022 100% CONSTRUCTION DOCUMENTS - 20

22 07/01/2022 100% CONSTRUCTION DOCUMENTS - 21

23 07/01/2022 100% CONSTRUCTION DOCUMENTS - 22

24 07/01/2022 100% CONSTRUCTION DOCUMENTS - 23

25 07/01/2022 100% CONSTRUCTION DOCUMENTS - 24

26 07/01/2022 100% CONSTRUCTION DOCUMENTS - 25

27 07/01/2022 100% CONSTRUCTION DOCUMENTS - 26

28 07/01/2022 100% CONSTRUCTION DOCUMENTS - 27

29 07/01/2022 100% CONSTRUCTION DOCUMENTS - 28

30 07/01/2022 100% CONSTRUCTION DOCUMENTS - 29

31 07/01/2022 100% CONSTRUCTION DOCUMENTS - 30

32 07/01/2022 100% CONSTRUCTION DOCUMENTS - 31

33 07/01/2022 100% CONSTRUCTION DOCUMENTS - 32

34 07/01/2022 100% CONSTRUCTION DOCUMENTS - 33

35 07/01/2022 100% CONSTRUCTION DOCUMENTS - 34

36 07/01/2022 100% CONSTRUCTION DOCUMENTS - 35

37 07/01/2022 100% CONSTRUCTION DOCUMENTS - 36

38 07/01/2022 100% CONSTRUCTION DOCUMENTS - 37

39 07/01/2022 100% CONSTRUCTION DOCUMENTS - 38

40 07/01/2022 100% CONSTRUCTION DOCUMENTS - 39

41 07/01/2022 100% CONSTRUCTION DOCUMENTS - 40

42 07/01/2022 100% CONSTRUCTION DOCUMENTS - 41

43 07/01/2022 100% CONSTRUCTION DOCUMENTS - 42

44 07/01/2022 100% CONSTRUCTION DOCUMENTS - 43

45 07/01/2022 100% CONSTRUCTION DOCUMENTS - 44

46 07/01/2022 100% CONSTRUCTION DOCUMENTS - 45

47 07/01/2022 100% CONSTRUCTION DOCUMENTS - 46

48 07/01/2022 100% CONSTRUCTION DOCUMENTS - 47

49 07/01/2022 100% CONSTRUCTION DOCUMENTS - 48

50 07/01/2022 100% CONSTRUCTION DOCUMENTS - 49

51 07/01/2022 100% CONSTRUCTION DOCUMENTS - 50

52 07/01/2022 100% CONSTRUCTION DOCUMENTS - 51

53 07/01/2022 100% CONSTRUCTION DOCUMENTS - 52

54 07/01/2022 100% CONSTRUCTION DOCUMENTS - 53

55 07/01/2022 100% CONSTRUCTION DOCUMENTS - 54

56 07/01/2022 100% CONSTRUCTION DOCUMENTS - 55

57 07/01/2022 100% CONSTRUCTION DOCUMENTS - 56

58 07/01/2022 100% CONSTRUCTION DOCUMENTS - 57

59 07/01/2022 100% CONSTRUCTION DOCUMENTS - 58

60 07/01/2022 100% CONSTRUCTION DOCUMENTS - 59

61 07/01/2022 100% CONSTRUCTION DOCUMENTS - 60

62 07/01/2022 100% CONSTRUCTION DOCUMENTS - 61

63 07/01/2022 100% CONSTRUCTION DOCUMENTS - 62

64 07/01/2022 100% CONSTRUCTION DOCUMENTS - 63

65 07/01/2022 100% CONSTRUCTION DOCUMENTS - 64

66 07/01/2022 100% CONSTRUCTION DOCUMENTS - 65

67 07/01/2022 100% CONSTRUCTION DOCUMENTS - 66

68 07/01/2022 100% CONSTRUCTION DOCUMENTS - 67

69 07/01/2022 100% CONSTRUCTION DOCUMENTS - 68

70 07/01/2022 100% CONSTRUCTION DOCUMENTS - 69

71 07/01/2022 100% CONSTRUCTION DOCUMENTS - 70

72 07/01/2022 100% CONSTRUCTION DOCUMENTS - 71

73 07/01/2022 100% CONSTRUCTION DOCUMENTS - 72

74 07/01/2022 100% CONSTRUCTION DOCUMENTS - 73

75 07/01/2022 100% CONSTRUCTION DOCUMENTS - 74

76 07/01/2022 100% CONSTRUCTION DOCUMENTS - 75

77 07/01/2022 100% CONSTRUCTION DOCUMENTS - 76

78 07/01/2022 100% CONSTRUCTION DOCUMENTS - 77

79 07/01/2022 100% CONSTRUCTION DOCUMENTS - 78

80 07/01/2022 100% CONSTRUCTION DOCUMENTS - 79

81 07/01/2022 100% CONSTRUCTION DOCUMENTS - 80

82 07/01/2022 100% CONSTRUCTION DOCUMENTS - 81

83 07/01/2022 100% CONSTRUCTION DOCUMENTS - 82

84 07/01/2022 100% CONSTRUCTION DOCUMENTS - 83

85 07/01/2022 100% CONSTRUCTION DOCUMENTS - 84

86 07/01/2022 100% CONSTRUCTION DOCUMENTS - 85

87 07/01/2022 100% CONSTRUCTION DOCUMENTS - 86

88 07/01/2022 100% CONSTRUCTION DOCUMENTS - 87

89 07/01/2022 100% CONSTRUCTION DOCUMENTS - 88

90 07/01/2022 100% CONSTRUCTION DOCUMENTS - 89

91 07/01/2022 100% CONSTRUCTION DOCUMENTS - 90

92 07/01/2022 100% CONSTRUCTION DOCUMENTS - 91

93 07/01/2022 100% CONSTRUCTION DOCUMENTS - 92

94 07/01/2022 100% CONSTRUCTION DOCUMENTS - 93

95 07/01/2022 100% CONSTRUCTION DOCUMENTS - 94

96 07/01/2022 100% CONSTRUCTION DOCUMENTS - 95

97 07/01/2022 100% CONSTRUCTION DOCUMENTS - 96

98 07/01/2022 100% CONSTRUCTION DOCUMENTS - 97

99 07/01/2022 100% CONSTRUCTION DOCUMENTS - 98

100 07/01/2022 100% CONSTRUCTION DOCUMENTS - 99

101 07/01/2022 100% CONSTRUCTION DOCUMENTS - 100

102 07/01/2022 100% CONSTRUCTION DOCUMENTS - 101

103 07/01/2022 100% CONSTRUCTION DOCUMENTS - 102

104 07/01/2022 100% CONSTRUCTION DOCUMENTS - 103

105 07/01/2022 100% CONSTRUCTION DOCUMENTS - 104

106 07/01/2022 100% CONSTRUCTION DOCUMENTS - 105

107 07/01/2022 100% CONSTRUCTION DOCUMENTS - 106

108 07/01/2022 100% CONSTRUCTION DOCUMENTS - 107

109 07/01/2022 100% CONSTRUCTION DOCUMENTS - 108

110 07/01/2022 100% CONSTRUCTION DOCUMENTS - 109

111 07/01/2022 100% CONSTRUCTION DOCUMENTS - 110

112 07/01/2022 100% CONSTRUCTION DOCUMENTS - 111

113 07/01/2022 100% CONSTRUCTION DOCUMENTS - 112

114 07/01/2022 100% CONSTRUCTION DOCUMENTS - 113

115 07/01/2022 100% CONSTRUCTION DOCUMENTS - 114

116 07/01/2022 100% CONSTRUCTION DOCUMENTS - 115

117 07/01/2022 100% CONSTRUCTION DOCUMENTS - 116

118 07/01/2022 100% CONSTRUCTION DOCUMENTS - 117

119 07/01/2022 100% CONSTRUCTION DOCUMENTS - 118

120 07/01/2022 100% CONSTRUCTION DOCUMENTS - 119

121 07/01/2022 100% CONSTRUCTION DOCUMENTS - 120

122 07/01/2022 100% CONSTRUCTION DOCUMENTS - 121

123 07/01/2022 100% CONSTRUCTION DOCUMENTS - 122

124 07/01/2022 100% CONSTRUCTION DOCUMENTS - 123

125 07/01/2022 100% CONSTRUCTION DOCUMENTS - 124

126 07/01/2022 100% CONSTRUCTION DOCUMENTS - 125

127 07/01/2022 100% CONSTRUCTION DOCUMENTS - 126

128 07/01/2022 100% CONSTRUCTION DOCUMENTS - 127

129 07/01/2022 100% CONSTRUCTION DOCUMENTS - 128

130 07/01/2022 100% CONSTRUCTION DOCUMENTS - 129

131 07/01/2022 100% CONSTRUCTION DOCUMENTS - 130

132 07/01/2022 100% CONSTRUCTION DOCUMENTS