

777 Old Saw Mill River Road  
Tarrytown, NY 10591-6707  
T: 914.847.7400  
F: 914.847.7991  
www.regeneron.com

BUILDING #17  
CAMPUS EXPANSION CHILD  
DAY-CARE CENTER

899 OLD SAW MILL RIVER ROAD  
MOUNT PLEASANT, NY 10591

Civil Engineer:  
JMC Site Development Consultants  
120 Bedford Road  
Armonk, NY 10504  
914-273-5225  
www.jmccplc.com

Attorney:  
DeBello Donnellan Weingarten Wise &  
Wiederkehr, LLP  
One North Lexington Avenue, 11th Floor  
White Plains, New York 10601  
Phone: (914) 681-0200

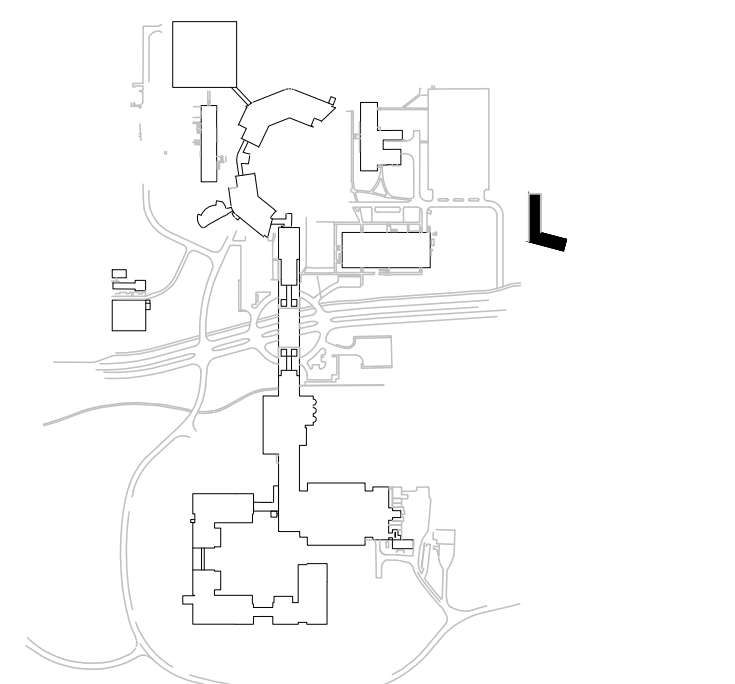
Geotechnical Engineer:  
Carlin-Simpson & Associates  
61 Main Street  
Sayreville, NJ 08872  
Phone: (732) 432-5757

Architect:  
Gensler  
1700 Broadway, Suite 400  
New York, New York 10019  
Phone: (212) 492-1400  
Fax: (212) 492-1472  
Landscape Architect (Playground):  
Langan  
21 Penn Plaza, 360 West 31st Street, 8th Floor  
New York, New York 10001  
Phone: (212) 479-5400  
Fax: (212) 479-5444

MEP/IT/Security Engineer:

Cosentini Associates  
498 Seventh Avenue  
New York, New York 10018  
Phone: (212) 615-3600  
Fax: (212) 615-3700

No. Date Description



No.	Date	Description
0	05/20/2022	ISSUED FOR PERMIT
1	06/20/2022	100% CONSTRUCTION DOCUMENTS
2	07/01/2022	100% CONSTRUCTION DOCUMENTS - 1

ALL DRAWINGS AND WRITTEN MATERIALS REPRESENTED ON THIS SHEET CONSTITUTE THE  
COPYRIGHTED WORK AND ARE THE SOLE PROPERTY OF REGENERON PHARMACEUTICALS.  
THIS SHEET MAY NOT BE REPRODUCED OR COPIED IN WHOLE OR IN PART, NOR MAY ANY OF  
THE DRAWINGS OR WRITTEN MATERIALS APPEARING WITHIN, BE REPRODUCED INTO  
ANOTHER WORK FOR ANY REASON WITHOUT THE WRITTEN CONSENT OF REGENERON  
PHARMACEUTICALS. THIS SHEET MUST BE RETURNED UPON THE REQUEST OF REGENERON  
PHARMACEUTICALS.

Professional Seal and Signature

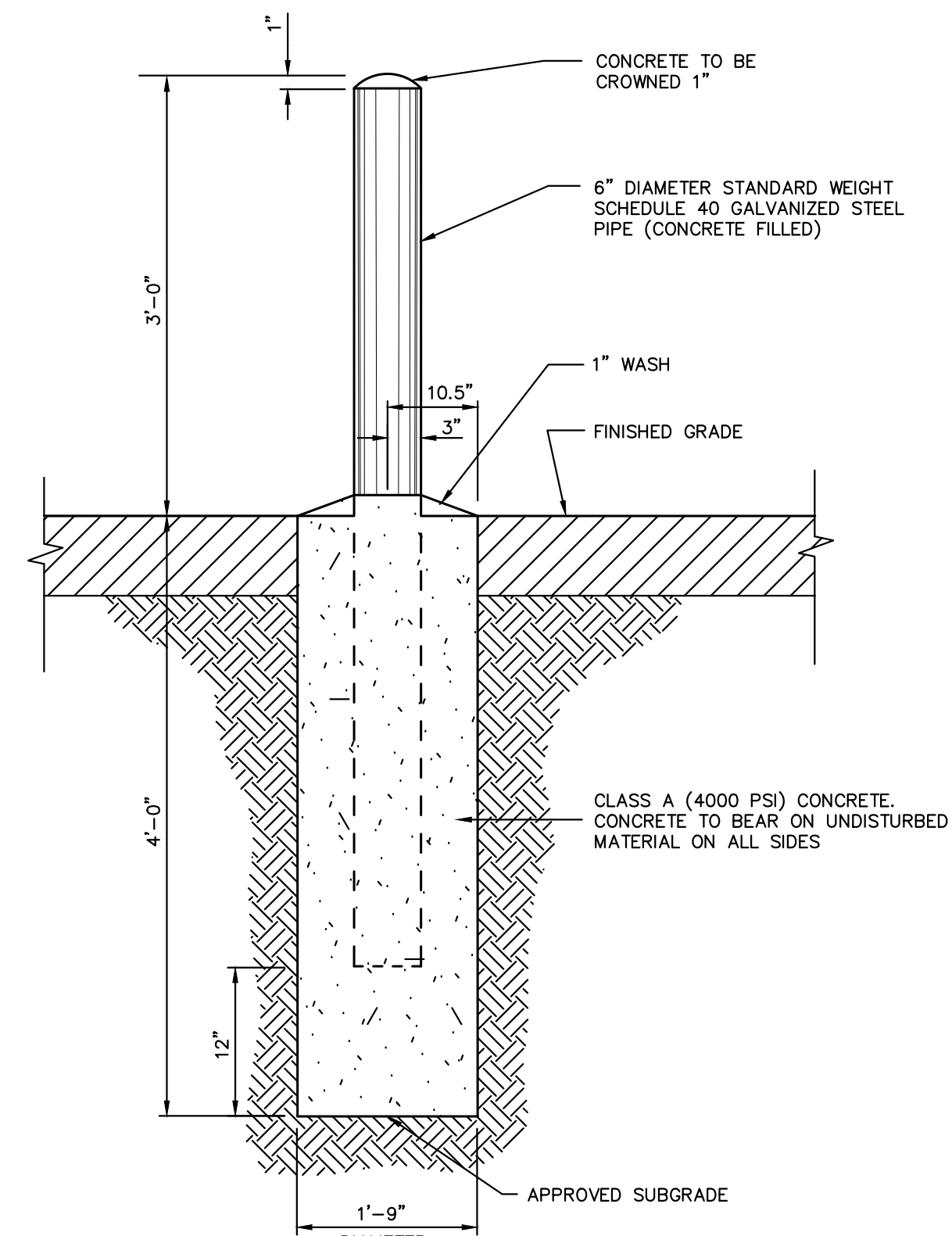
ANY ALTERATION OF PLANS,  
SPECIFICATIONS, PLATS AND  
REPORTS BEARING THE SEAL  
OF A LICENSED PROFESSIONAL  
ENGINEER OR LICENSED LAND  
SURVEYOR IS A VIOLATION OF  
SECTION 7209 OF THE NEW  
YORK STATE EDUCATION LAW,  
EXCEPT AS PROVIDED FOR BY  
SECTION 7209, SUBSECTION 2.

Vendor Name: JMC, PLLC  
Vendor Project No.: 20090-3  
Discipline: Civil Drawn By: TC  
Drawing Title:

CONSTRUCTION DETAILS

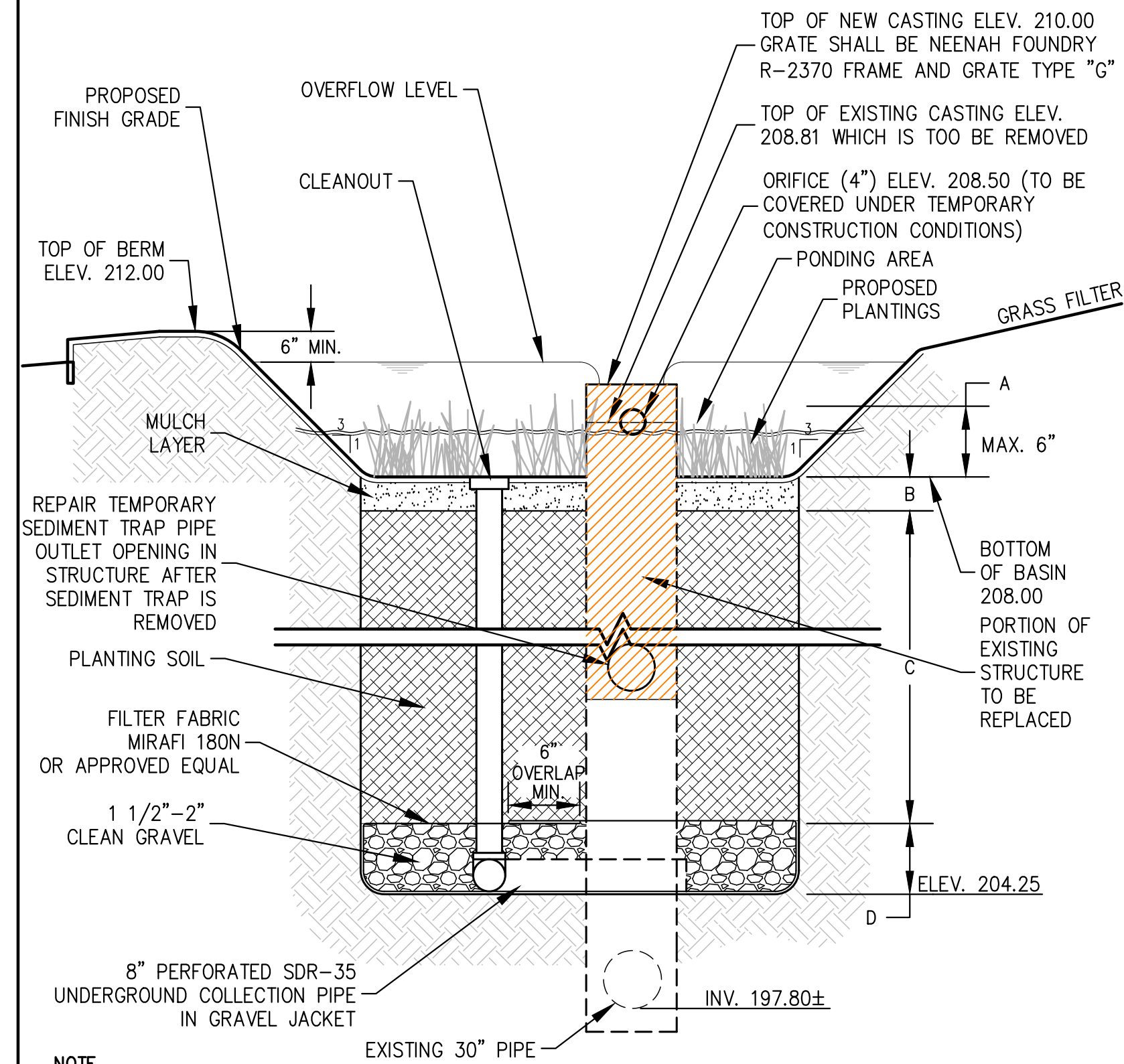
Scale: N.T.S.

C-904



- NOTES:
1. WHEN PROTECTION POSTS ARE TO BE USED FOR PROTECTION OF HANDICAP PARKING SIGNS OR OTHER TRAFFIC SIGNS, SIGN SUPPORTING POSTS SHALL BE IMBEDDED A MINIMUM OF THREE (3) FEET INTO THE CONCRETE.
  2. POST FOR HANDICAP PARKING STALLS SHALL BE PAINTED BLUE AS FOLLOWS:  
A. SOLVENT CLEAN TO REMOVE OIL, GREASE AND OTHER CONTAMINANTS.  
B. APPLY METAL PRIMER FOR GALVANIZED SURFACES.  
C. APPLY TWO (2) FINISH COATS OF APPROVED EXTERIOR PAINT FOR METAL SURFACES.

BOTTOM OF BASIN ELEVATION	ORIFICE ELEVATION	OVERFLOW RISER TOP ELEVATION	SURFACE AREA REQ'D S.F.	SURFACE AREA PROV'D S.F.	TOP BERM ELEV.	PONDING A	MULCH B	PLANTING SOIL C	GRAVEL D
208.00	208.50 (4")	210.00	2,700	2,854	212.00	6"	3"	30"	12"



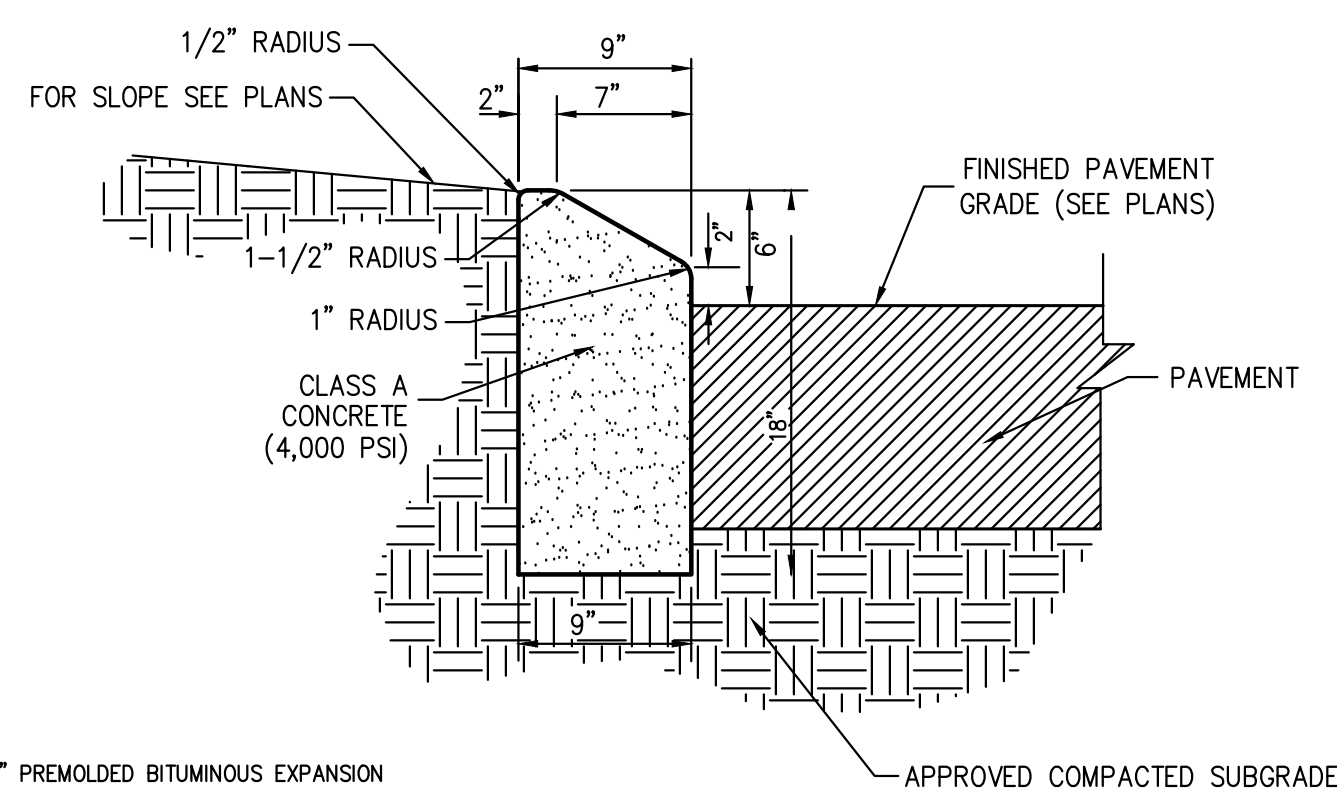
- NOTE
1. SEE PLAN FOR ELEVATIONS OF BIORETENTION AREA.
  2. PRIOR TO CONSTRUCTION REMOVE EXISTING CASTING AND CONFIRM TOP ELEVATION OF EXISTING STRUCTURE.
  3. A NEW CONCRETE COLLAR IS TO BE FABRICATED WITH ORIFICE AND NEW GRATE TO BE PLACED ON TOP.

## BIORETENTION BASIN

31

## EXPOSED CONCRETE CURB

35



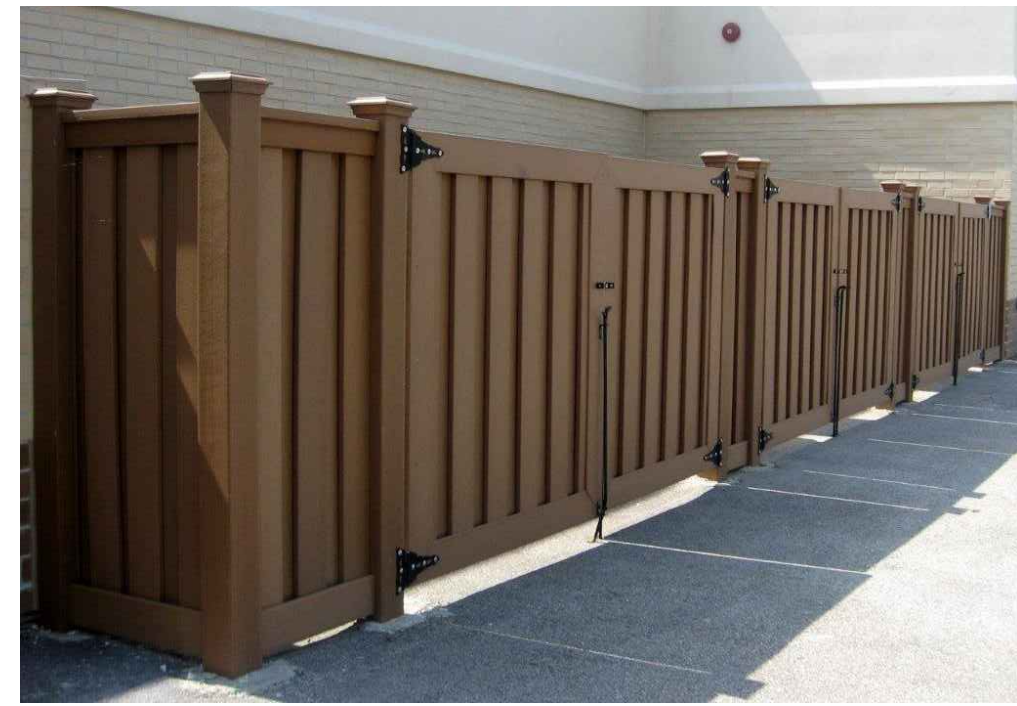
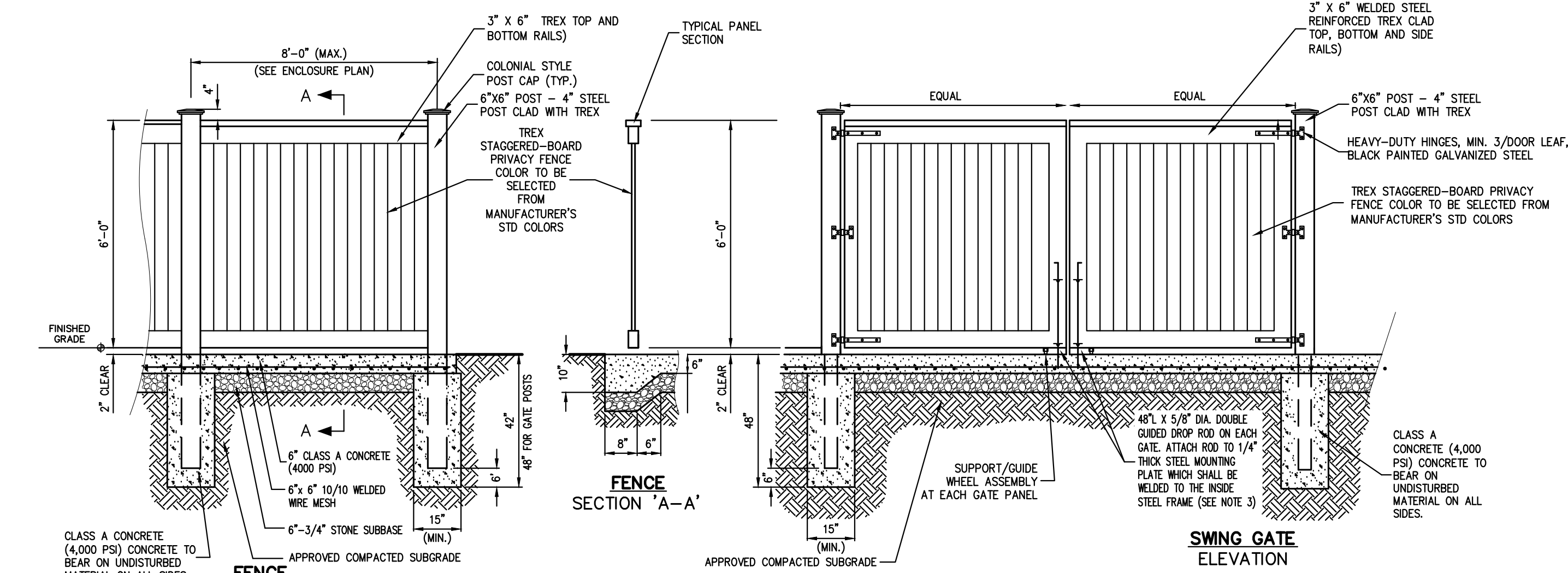
- NOTES:
1. INSTALL 1" PREMOLDED BITUMINOUS EXPANSION JOINT EVERY 20 FEET.
  2. INSTALL CONSTRUCTION JOINTS MID-WAY BETWEEN EXPANSION JOINTS SO THAT THE LENGTH OF CURB SEGMENTS WILL BE TEN (10) FEET.
  3. LENGTH OF CURB SEGMENTS AT CLOSURES MAY BE VARIED BUT SHALL NOT BE LESS THAN FOUR (4) FEET.
  4. WHEN INSTALLED ADJACENT TO SIDEWALK OR CONCRETE PAVEMENT, MATCH EXPANSION JOINTS.

## MOUNTABLE CONCRETE CURB (NYSDOT TYPE M150 PROFILE)

36

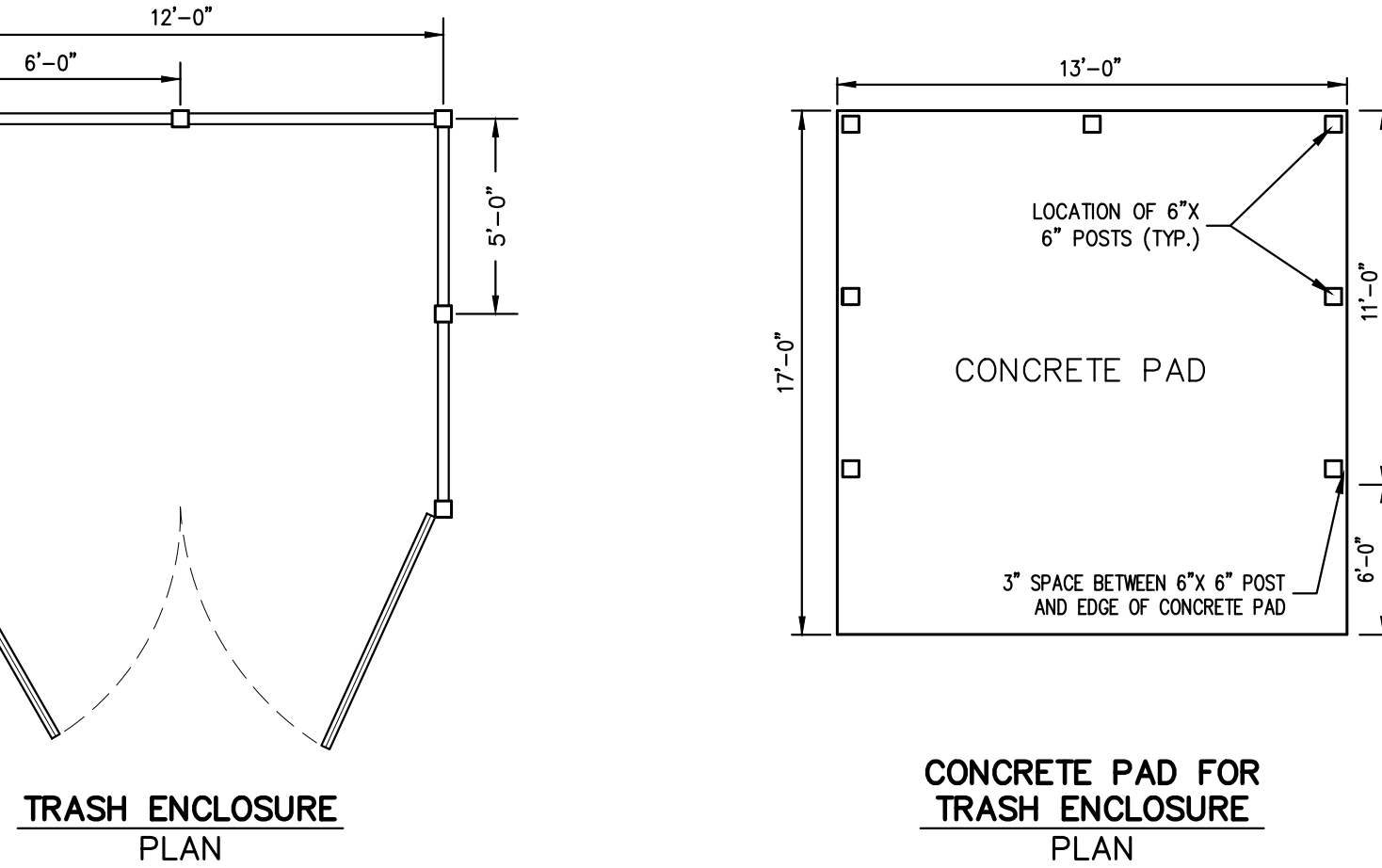
## CONCRETE CURB ENDING

38



TYPICAL FENCE IMAGE (FOR REFERENCE ONLY)

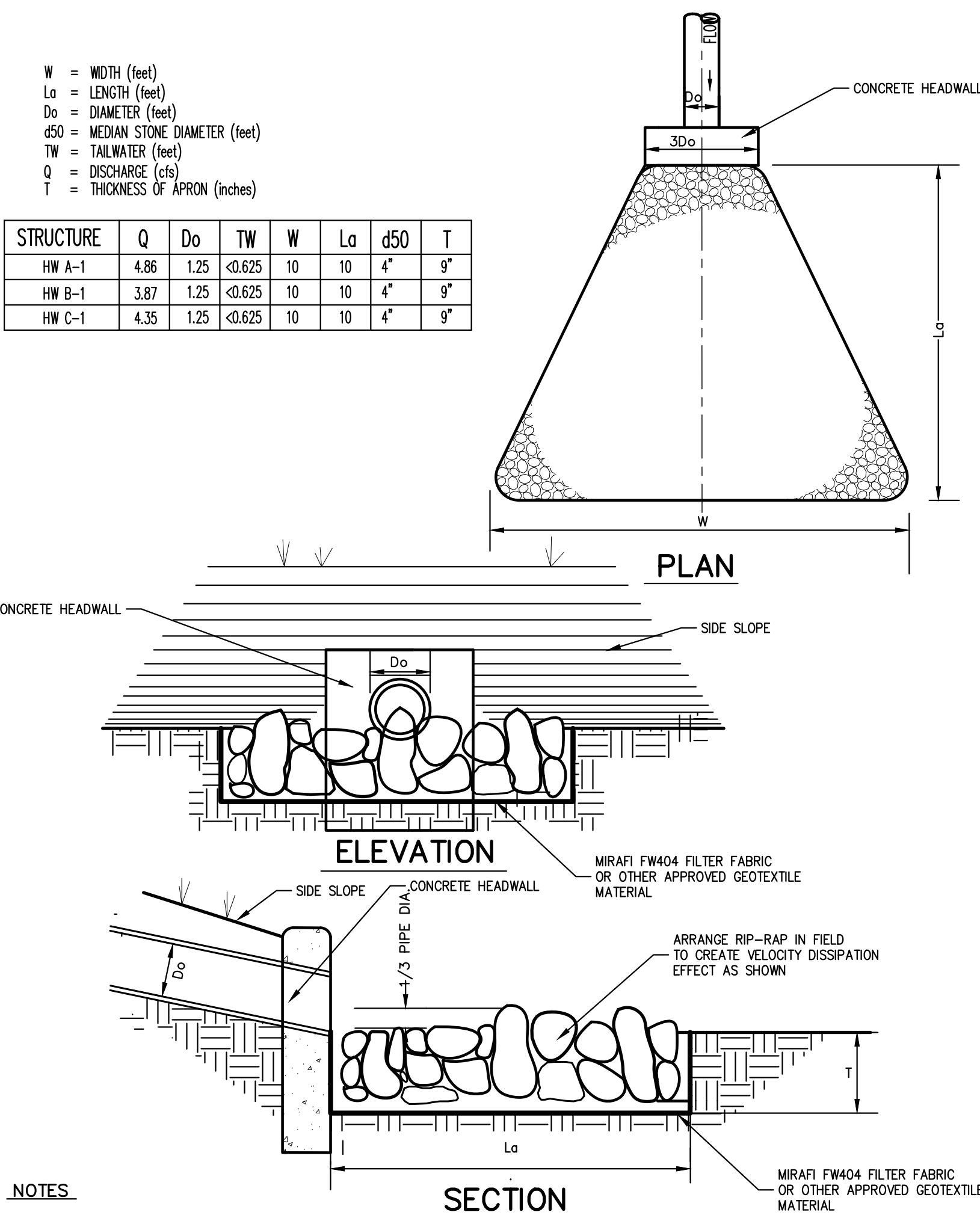
- NOTES:
1. METAL FLANGES, CLEATS, BOLTS, SCREWS, ETC. SHALL BE STAINLESS STEEL OR GALVANIZED STEEL.
  2. SEE SITE LAYOUT PLANS FOR LOCATION. REFER TO ELECTRICAL PLANS FOR EXACT DIMENSIONS OF GENERATOR ENCLOSURE. CONCRETE PADS FOR GENERATOR BY OTHERS.
  3. CONTRACTOR SHALL DRILL TWO (2) HOLES IN THE CONCRETE TO ALLOW FOR DROP RODS TO HOLD GATES IN THE OPEN AND CLOSED POSITION.



## GENERATOR ENCLOSURE / TRASH ENCLOSURE WITH CONCRETE PAD

30

STRUCTURE	Q	Do	TW	W	Lo	d50	T
HW A-1	4.86	1.25	Ø.625	10	10	4"	9"
HW B-1	3.87	1.25	Ø.625	10	10	4"	9"
HW C-1	4.35	1.25	Ø.625	10	10	4"	9"



- NOTES:
1. STONE OBTAINED FROM THE SITE EXCAVATION WHICH CONFORMS TO THE SPECIFICATIONS MAY BE USED AS RIP-RAP.
  2. REFER TO HEADWALL DETAIL FOR ADDITIONAL INFORMATION.

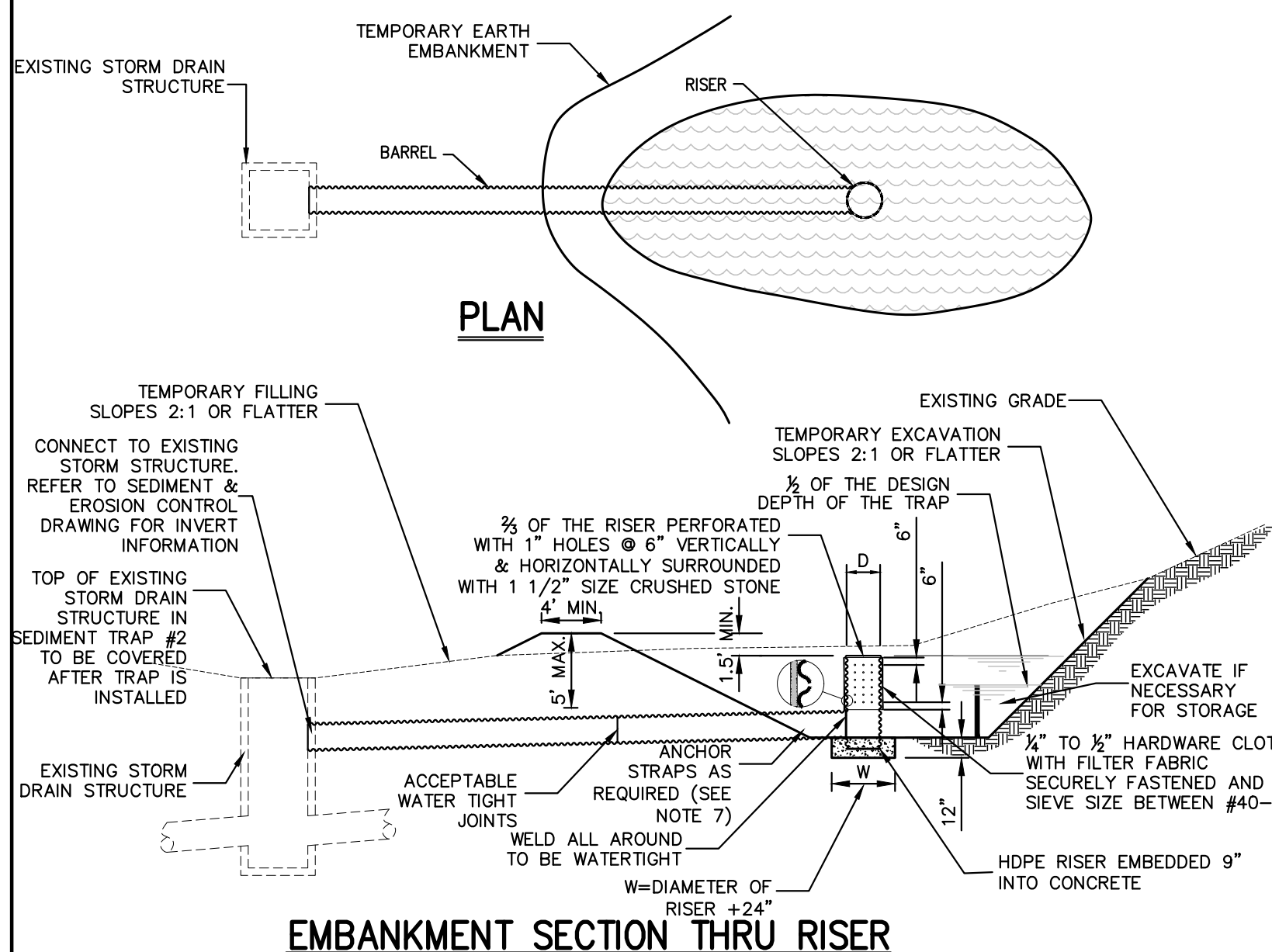
## RIP-RAP APRON/ENERGY DISSIPATOR HEADWALL

## PIPE OUTLET SEDIMENT TRAP: ST-I

34

SEDIMENT TRAP INFORMATION						
TRAP DRAINAGE AREA (ACRES)	STORAGE REQUIRED (CU YD)	STORAGE PROVIDED (CU YD)	OUTLET LENGTH OR PIPE SIZE	STORAGE DEPTH BELOW OUTLET OR CLEANOUT ELEVATION (FEET)	RISER/OUTLET ELEVATION	EMBANKMENT HEIGHT AND ELEVATION
1. 2.1	7,560	10,356 ELEV. 211.00	24" DIA. RISER, 18" DIA. BARREL	3	211.00	4', 212.00
2. 2.2	7,820	8,275 ELEV. 209.00	24" DIA. RISER, 18" DIA. BARREL	3	209.00	4.5', 210.50

SEDIMENT SHALL BE REMOVED AND THE TRAP RESTORED TO THE ORIGINAL DIMENSIONS WHEN THE SEDIMENT HAS ACCUMULATED TO 3/4 OF THE DESIGN DEPTH OF TRAP #1 AND 1/3 THE DEPTH FOR TRAP #2. SEDIMENT REMOVED FROM THE TRAP SHALL BE DEPOSITED IN A PROTECTED AREA AND IN SUCH A MANNER THAT IT WILL NOT ERODE.



- NOTES:
1. MAXIMUM DRAINAGE AREA 5 ACRES.
  2. W = DIAMETER OF RISER + 24"
  3. FOR THE RISER DIAMETER 18", THE NUMBER OF ORIFICE BY ROW WILL BE 8.
  4. REFER TO EROSION & SEDIMENT CONTROL PLANS FOR SPECIFIC INFORMATION ON EACH SEDIMENT TRAP.
  5. ALL SIDE SLOPES SHALL BE STABILIZED WITH SEED, MULCH, STONE, HYDROSEED OR OTHER ACCEPTABLE MEASURE TO PROJECT ENGINEER.
  6. RISER AND OUTLET PIPES FOR TRAPS SHALL BE WATER-TIGHT HDPE PIPE.
  7. ANCHOR STRAPS ARE REQUIRED IF MORE THAN 7 FEET OF PIPE IS EXPOSED IN BOTH DIRECTIONS. STRAPS SHALL BE EMBEDDED IN 36"x36"x8" CONCRETE PAD.