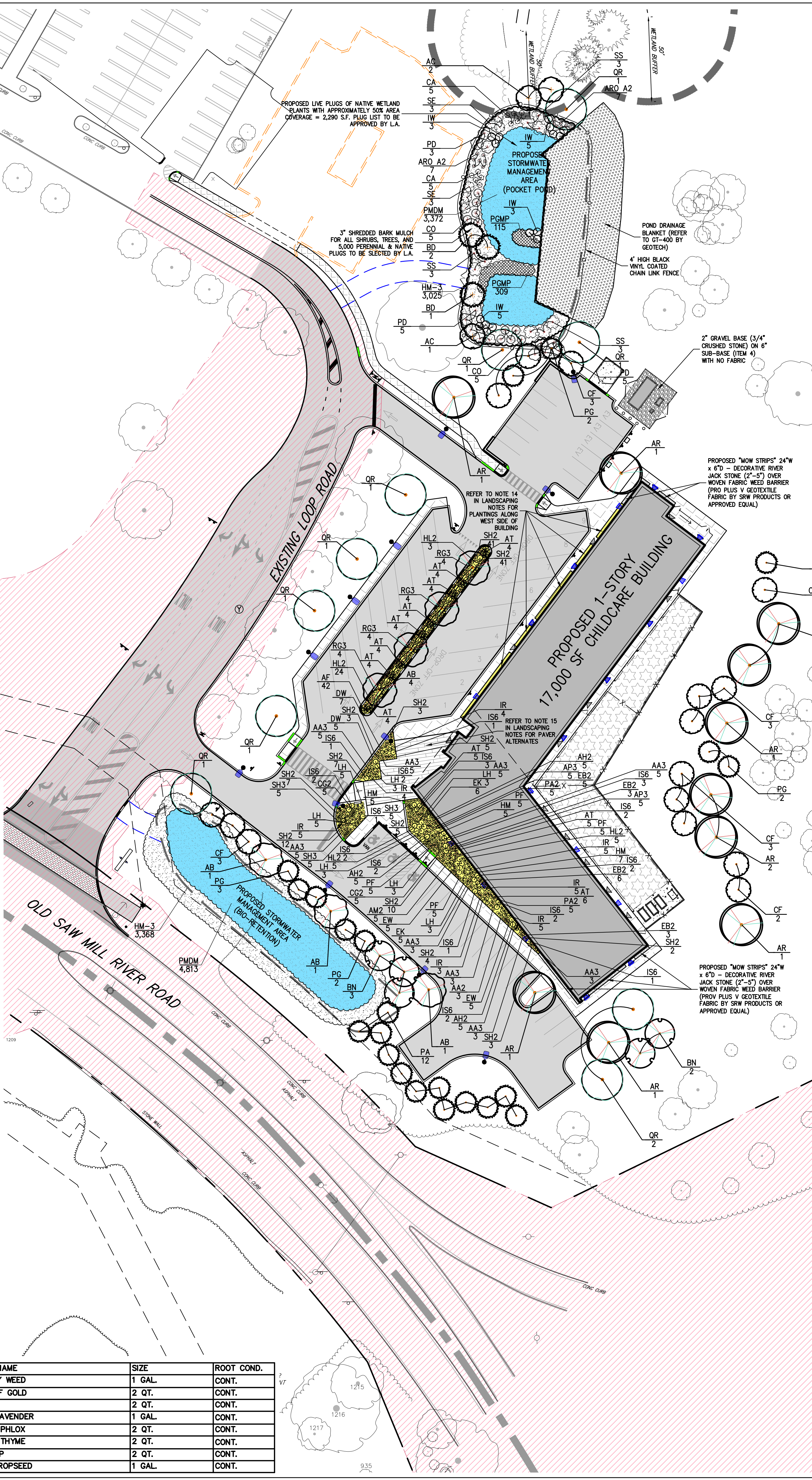


20090-3-LAND.dwg LAND:ISS: J.LAND:JLF

LANDSCAPING NOTES:

1. ALL PLANT MATERIAL SHALL BE FIRST QUALITY NURSERY STOCK, CERTIFIED TRUE TO THEIR GENUS, SPECIES AND VARIETY, AND SHALL CONFORM TO THE "AMERICAN STANDARD FOR NURSERY STOCK," PUBLISHED BY AMERICAN HORT (AND 2001), LATEST EDITION.
2. ALL AREAS OF THE SITE NOT OCCUPIED BY BUILDING OR PAVEMENT AND NOT SPECIFIED AS BEING PLANTED WITH TREES, SHRUBS OR GROUND COVER SHALL BE LAWN.
3. ALL PLANTING BEDS SHALL BE MULCHED WITH 3" OF CLEAN, NON-DYED, TOXIC FREE, ORGANIC MATERIAL, CONSISTING OF SHREDDED HARDWOOD, ROTTEN MUCK, SHREDDED CEDAR OR BARK CHIPS.
4. PLANT MATERIALS AS SPECIFIED ON THE DRAWINGS AND DELIVERED TO THE SITE SHALL BE NURSERY GROWN AND CERTIFIED TRUE TO THEIR GENUS, SPECIES AND VARIETY. SUBSTITUTIONS ARE NOT PERMITTED WITHOUT THE WRITTEN APPROVAL OF THE PROJECT LANDSCAPE ARCHITECT.
5. ALL LANDSCAPING SHALL CONTINUE TO BE MAINTAINED IN A HEALTHY GROWING CONDITION THROUGHOUT THE DURATION OF THE PROJECT. ANY PLANTING NOT SO MAINTAINED SHALL BE REPLACED WITH NEW PLANTS AT THE BEGINNING OF THE NEXT, IMMEDIATELY FOLLOWING, GROWING SEASON.
6. ALL TREES AND SHRUBS SHALL BE PRUNED AND SHAPED AND BE SUBJECT TO THE APPROVAL OF THE PROJECT LANDSCAPE ARCHITECT AND ALL AUTHORITIES HAVING JURISDICTION.
7. PLANTING STOCK SHALL BE WELL-BRANCHED AND WELL-FORMED, SOUND, VIGOROUS, HEALTHY, FREE FROM DISEASE, SUN-SCALE, WINDBURN, ABRASION, AND HARMFUL INSECTS OR INSECT EGGS, AND SHALL HAVE HEALTHY, NORMAL UNBROKEN ROOT SYSTEMS. DECIDUOUS TREES AND SHRUBS SHALL BE SYMMETRICALLY DEVELOPED, OF UNIFORM HABIT OF GROWTH, WITH STRAIGHT TRUNKS OR STEMS, AND FREE FROM OBJECTIONABLE DISFIGURING DEFECTS. EVERGREEN TREES AND SHRUBS SHALL HAVE WELL-DEVELOPED SYMMETRICAL TOPS WITH TYPICAL SPREAD OF BRANCHES FOR EACH PARTICULAR SPECIES OR VARIETY. ONLY VINES AND GROUND COVER PLANTS WELL ESTABLISHED IN REMOVAL CONTAINERS, INTEGRAL CONTAINERS, OR FORMED HOMOGENEOUS SOIL SECTIONS SHALL BE USED. PLANTS SHALL BE GROWN UNDER CLIMATIC CONDITIONS SIMILAR TO THOSE IN THE LOCALITY OF THE PROJECT.
8. PLANTS SHALL BE GROWN UNDER CLIMATIC CONDITIONS SIMILAR TO THOSE IN THE LOCALITY OF THE PROJECT. SOURCES OF ALL PLANT MATERIAL SHALL BE DISCLOSED TO PROJECT LANDSCAPE ARCHITECT AND OWNER PRIOR TO DELIVERY.
9. ALL STOCK SHALL BE BALLED AND BURLAPPED OR CONTAINER GROWN STOCK, UNLESS OTHERWISE SPECIFIED. BAREROOT STOCK OF ANY KIND IS UNACCEPTABLE UNLESS SPECIFIED. SOIL WITHIN ALL PLANTING BEDS SHALL BE PREPARED AS DIRECTED IN THE PLANTING DETAILS AND PROJECT SPECIFICATIONS PRIOR TO INSTALLATION OF PLANT MATERIAL.
10. ALL PLANTING BEDS, LAWNS AND LANDSCAPED AREAS SHALL RECEIVE A MINIMUM 4" THICK LAYER OF TOPSOIL, UNLESS OTHERWISE SPECIFIED.
11. ALL DISTURBED AREAS THAT ARE NOT IDENTIFIED WITH A SPECIFIC SEED MIX, SHALL BE A DROUGHT TOLERANT LAWN MIX TO BE APPROVED BY THE LANDSCAPE ARCHITECT.
12. ALL AREAS DISTURBED OR DAMAGED DURING THE COURSE OF THE CONTRACTOR'S WORK SHALL BE REPAIRED OR RESTORED TO ORIGINAL OR CONSTRUCTED CONDITION AT NO ADDITIONAL COST TO THE OWNER.
13. PERENNIALS AND ORNAMENTAL GRASSES @ 1 GAL. EACH TO COVER 1,072 S.F. ALONG THE SOUTHWEST FACE OF THE BUILDING @ 2" TO 3" SPACING FOR A TOTAL OF 500 1-GALLON PLANTS TO BE SELECTED BY THE L.A. - SEE PLANS.
14. PLUGS IN POCKET POND SHALL BE @ 1' SPACING FOR A TOTAL OF 2,900 PLUGS, LIST TO BE APPROVED BY L.A. PRIOR TO ORDERING.
15. PAVEMENT ALTERNATES:
 - 15.1. ALTERNATE ONE: CONCRETE PAVERS SHALL BE UNLOCK ARTLINE PAVERS, WITH A 50% MIX OF WINTER MARBLE AND FRENCH GREY IN UNBROKEN FINISH.
 - 15.2. ALTERNATE TWO: CONCRETE PAVEMENT ALTERNATIVE SHALL BE POURED CONCRETE PAVEMENT - ROMANIAN SANDSCAPE FINISH, MIX OF NICOLE GREY AND FRENCH GREY - WITH SAWCUT SCORING IN 3-FT WIDE BY 9-FT LONG PLANKS.
16. THE CONTRACTOR SHALL SUPPLY THE FOLLOWING PLANT MATERIAL TO BE PLACED IN THE FIELD BY THE LANDSCAPE ARCHITECT AS FOLLOWS:

QTY	BOTANICAL NAME	COMMON NAME	SIZE	ROOT COND.
15	ASCLEPIAS TUBEROSA	BUTTERFLY WEED	1 GAL.	CONT.
25	AURINIA SAXATILIS 'COMPACTA'	BASKET OF GOLD	2 QT.	CONT.
25	DIANTHUS FIREWITCH	PINKS	2 QT.	CONT.
10	LA VANDULA HIDECOTE	ENGLISH LAVENDER	1 GAL.	CONT.
25	PHLOX STOLONIFERA	CREEPING PHLOX	2 QT.	CONT.
35	THYMUS SERPYLLUM	CREEPING THYME	2 QT.	CONT.
35	SEDUM TERNATUM	STONECROP	2 QT.	CONT.
30	SPOROBOLUS HETEROLEPIS	PRAIRIE DROPSEED	1 GAL.	CONT.



LEGEND	
	PROPOSED DECIDUOUS TREE
	PROPOSED ORNAMENTAL/FLOWERING TREE
	PROPOSED EVERGREEN TREE
	PROPOSED SHRUBS
	PROPOSED PERENNIAL AND ORNAMENTAL GRASS PLANTS 1 GAL. EACH
	PRAIRIE MOON DETENTION BASIN SEED MIX WITH SEED ENHANCEMENT FOR WETTER SOILS (PMDM)
	PROPOSED HM-3 MIX
	AREA OF DRP IRRIGATION

TREE REPLACEMENT CALCULATIONS	
DENSITY FACTOR FOR SITE: DFC = 5.10 AC * 15 = 76.50	
EXISTING DENSITY FACTOR: EDF = (TWELVE 10" TREES * 0.6) + (EIGHT 12" TREES * 0.8) + (SEVEN 14" TREES * 1.1) + (TEN 16" TREES * 1.4) + (TEN 18" TREES * 1.8) + (SIX 20" TREES * 2.2) + (EIGHT 22" TREES * 2.6) + (NINE 24" TREES * 3.1) + (TWO 26" TREES * 3.7) + (THREE 28" TREES * 4.3) + (THREE 30" TREES * 4.8) + (THREE 32" TREES * 5.5) + (THREE 36" TREES * 7.0) + (THREE 38" TREES * 7.5) + (THREE +40" TREES * 8.0) = 234.20	
REQUIRED REPLACEMENT DENSITY FACTOR: RDF = 76.50 - 234.20 = -157.70	
PROPOSED REPLACEMENT DENSITY FACTOR: PDF = (6 PA * 0.7) + (10 PG * 0.7) + (7 AB * 0.7) + (9 AR * 0.5) + (6 BN * 0.7) + (15 CF * 0.7) + (8 QR * 0.5) = 39.3	

SEED MIX NOTES:

PMDM DETENTION BASIN SEED MIX (80% - 9.39 LBS/AC) WITH SEED MIX ENHANCEMENT FOR WETTER SOILS (20% - 2.03 LBS/AC) BY PRAIRIE MOON NURSERY, WINONA, MN (888) 417-8156. FOR A COVER CROP USE ONE OF THE FOLLOWING:
- GRAIN RYE (SEP-APR; 30 LBS/AC),
- JAPANESE MILLET (MAY-AUG; 10 LBS/AC), OR
- BARNYARD GRASS (MAY-AUG; 10 LBS/AC),
AND/OR AS PER THE MANUFACTURER'S RECOMMENDATION FOR AN APPROPRIATE COVER CROP.

HM-3 NYSDEC STORMWATER BASIN MIX #3 [HERBACEOUS] (20-40 LBS/ACRE OR 1 LB PER 1,000 SF)
ELYMUS RIPARIUS (RIVERBANK WILD RICE)(20%)
ELYMUS VIRGINICUS (VIRGINIA WILD RYE)(20%)
POA PALUSTRIS (FOWL BLUEGRASS)(20%)
Panicum CANADENSE (Oxeye Tongue)(10%)
Panicum VIRGATUM (SWITCHGRASS)(10%)
Senna HEBECARPA (WILD SENNA)(10%)
ANDROPOGON GERARDI (BIG BLUESTEM)(2%)
DESCHAMPSIA CAESPITOSA (TUFTED HAIRGRASS)(2%)
GLYCERIA STRIATA (FOWL MANNAGRASS)(2%)
LOBELIA CARDINALIS (CARDINAL FLOWER)(2%)
JUNCUS EFFUSUS (SOFT RUSH)(1%)
POLYGONUM SPP. (SMARTWEED)(1%)

- WETLAND BUFFER MITIGATION NOTES**
1. INSTALL EROSION CONTROL MEASURES.
 2. REMOVE ALL TRASH, DEBRIS, AND DEAD/OVERGROWN VEGETATION.
 3. EVANS ASSOCIATES WILL IDENTIFY AND TAG INVASIVE PLANTS TO BE REMOVED FROM WITHIN THE BUFFER AREA.
 4. REMOVE INVASIVE PLANTS. REMOVAL TO INCLUDE ENTIRE PLANT AND ROOT SYSTEM.
 5. ALL INVASIVE PLANTS SHALL BE A CUT STUMP APPLICATION OF NYSDEC APPROVED ORGANIC HERBICIDE IMMEDIATELY AFTER CUTTING. CUT STUMP TREATMENTS SHOULD BE CONDUCTED DURING THE GROWING SEASON AFTER FULL LEAF EXPANSION WHEN NUTRIENTS ARE ACTIVELY BEING TRANSPORTED TO THE ROOTS. DELAY IN APPLICATION AFTER CUTTING MAY RESULT IN REDUCED EFFECTIVENESS. SPECIAL AQUATIC FORMULATIONS ARE REQUIRED FOR ALL WETLAND ZONES. THE CONTRACTOR SHALL BE REQUIRED TO HAVE A STATE ISSUED PESTICIDE APPLICATOR LICENSE WHEN APPLYING THE ORGANIC CHEMICAL AND PERMITS AS REQUIRED.
 6. IF INVASIVE VINES ARE TWINING AROUND OTHER HOST SHRUBS OR TREES, AVOID APPLYING HERBICIDE TO THE PLANT.
 7. DISPOSAL: REMOVE ALL PLANT PARTS FROM SITE IN COVERED TRUCK PER NYSDEC APPROVED DISPOSAL METHODS. DISPOSAL OF IN APPROVED LANDFILL OR INCINERATE WITH APPROPRIATE PERMITS.
 8. SANITATION: CLEAN ALL CLOTHING, BOOTS, AND EQUIPMENT TO PREVENT SPREAD OF SEED.
 9. INVASIVE PLANT MATERIALS TO BE DISCARDED OFF SITE.
 10. INSTALL PLANT MATERIALS AS PER APPROVED PLAN AND PLANT SCHEDULE.
 11. CONTRACTOR TO REMOVE ALL EXISTING INVASIVE VEGETATION FROM WITHIN THE DISTURBED BUFFER AREAS. SURFACE AREA TO BE ROUGH-GRADED AS PER PLAN. REMOVE ALL ROOTS WITHIN 6-12 INCHES OF SURFACE. ENTIRE SURFACE AREA TO BE POWER RAKED AND FIRST (6) INCHES OF SOIL TILLED AND ANY WEEDY MATERIAL OF ROOTS TO BE REMOVED.
 12. ENGINEER OR ENVIRONMENTAL CONSULTANT TO RENEW AND APPROVE ROUGH GRADES PRIOR TO HERBICIDE TREATMENT AND PLANTING.
 13. ONCE ROUGH GRADES ARE APPROVED, THE ENTIRE SURFACE AREA WILL BE SPRAYED WITH AN APPROVED GLYPHOSATE BASED HERBICIDE FOR WETLAND USE (I.E. RODEO OR ACCORD). AREA TO SIT FOR TWO WEEKS PRIOR TO PLANTINGS FOR SEEDING.
 14. SEED AREA AS PER PLANS AND RATES AFTER TWO WEEKS MINIMUM FROM INITIAL SPRAYING OF HERBICIDE.
 15. HAND BROADCASTING SEED METHODS AS FOLLOWS: WILDFLOWER AND GRASS SEED MIXES AS NOTED ON PLANS (APPLIED AT A RATE OF 40 LBS/ACRE) TO INCLUDE A NURSE CROP OF ANNUAL RYE GRASS AT A RATE OF 1 LB PER 5,000 SQ.FT. MIX ALL SEED WITH A CARRIER TO CONSIST OF SLIGHTLY DAMPENED SAWDUST OR VERMICULITE (APPROXIMATELY TWO BUSHEL BASKETS OF SAWDUST PER 1,000 SQ.FT.).
 - 15.1. THE SEED CARRIER MIXTURE TO BE DAMPENED WITH WATER, JUST UNTIL IT IS SLIGHTLY DAMP TO THE TOUCH. THE WATER IS NECESSARY SO THE SEED ADHERES TO THE CARRIER, WHICH AIDS IN EVEN DISTRIBUTION OF THE SEED.
 - 15.2. AFTER MIXING YOUR SEED INTO THE CARRIER, DIVIDE THIS MIXTURE INTO TWO EQUAL PARTS.
 - 15.3. HAND BROADCAST ONE HALF OF THE SEED MIXTURE OVER THE ENTIRE SITE (I.E. IN A NORTH TO SOUTH DIRECTION).
 - 15.4. HAND BROADCAST THE SECOND HALF OF THE SEED OVER THE SITE, WALKING PERPENDICULAR TO THE DIRECTION YOU SEED IN THE FIRST HALF. THIS "CROSS PATTERN" SEEDING ENSURES EVEN SEED DISTRIBUTION.
 - 15.5. RAKE OR DRAG THE AREA WITH 1/4"-1/2" OF SOIL. (DO NOT BRING IN TOPSOIL TO ACHIEVE THIS, AS THIS WILL POTENTIALLY INTRODUCE MORE WEED SEED ON SITE).
 - 15.6. FIRM THE SEEDING AREA BY ROLLING THE SITE WITH A HAND ROLLER. WILDFLOWER SEED AND GRASSES REQUIRES FIRM SEED TO SOIL CONTACT FOR GOOD GERMINATION.
 - 15.7. MULCH THE PLANTING AREA WITH APPROXIMATELY 1" OF WEEP FREE STRAW. MULCH CAN BE LAID BY HAND OR BLOWN INTO THE SITE, MECHANICALLY.

PLANT SCHEDULE					
TREES	QTY	BOTANICAL NAME	COMMON NAME	SIZE	ROOT COND. REMARKS
BD	4	Betula Nigra	Dura Heat River Birch	8' - 10' HT.	B & B
EVERGREEN TREES					
PA	12	Picea Abies	Norway Spruce	8'-10' HT	B & B
PG	10	Picea Glauca	White Spruce	8'-10' HT	B & B
DECIDUOUS TREES					
AB	7	Acer rubrum 'Bowhall'	Bowhall Red Maple	6'-8" HT.	B & B
AR	10	Acer Rubrum 'Red Sunset'	Red Maple	3" - 3 1/2" Cal.	B & B
AC	4	Amelanchier Canadensis	Shadblow Serviceberry	6'-10' HT.	B & B
BN	5	Betula Nigra 'Heritage'	Heritage River Birch	7'-8" HT.	B & B
CF	11	Cornus Florida	Flowering Dogwood	6'-8" HT.	B & B
QR	15	Quercus Rubra	Red Oak	2.5-3"	B & B
ANNUALS/PERENNIALS					
AA2	3	Alchemilla mollis	Lady's Mantle	1 gal.	CONT.
AM2	5	Allium x 'Millenium'	Millenium Ornamental Onion	1 gal.	CONT.
AH2	15	Amonia tubrichtii	Arkansas Bluestar	1 gal.	CONT.
AA3	37	Aronia melanocarpa 'Moundscape'	Dwarf Chokeberry	2 gal.	CONT.
AT	48	Asclepias tuberosa	Butterfly Milkweed	1 gal.	CONT.
AP3	10	Aster 'Purple Dome'	Fall Blooming Aster	1 gal.	CONT.
CO	21	Cephalanthus Occidentalis	Buttonbush	5 GAL.	CONT.
CG2	10	Coreopsis grandiflora	Tickseed	5 gal.	CONT.
CA	15	Cornus Amomum	Silky Dogwood	3 GAL.	CONT.
DW	12	Dianthus gratianopolitanus 'Firewitch'	Firewitch Pink	1 gal.	CONT.
EW	10	Echinacea purpurea 'White Swan'	White Swan Coneflower	1 gal.	CONT.
EB2	17	Eupatorium dubium 'Baby Joe'	Baby Joe Joe-Pye Weed	2 gal.	CONT.
HM	17	Heuchera americana	Coral Bells	1 gal.	CONT.
HL2	37	Hydrangea paniculata 'Little Lamb'	Little Lamb Hydrangea	5 gal.	CONT.
IS6	27	Ilex crenata 'Soft Touch'	Soft Touch Japanese Holly	5 gal.	CONT.
IR	31	Itea virginica 'Fizzy Mizzy'	Dwarf Sweetpire	3 gal.	CONT.
LH	25	Lavandula angustifolia 'Hidcote'	English Lavender	1 gal.	CONT.
PF	20	Pennisetum alopecuroides 'Foxrot'	Foxrot Fountain Grass	1 gal.	CONT.
PA2	10	Perovskia abrotanoides	Russian Sage	5 gal.	CONT.
PD	21	Physocarpus Opulifolius 'Diablo'	Diablo Ninebark	5 GAL.	CONT.
SS	9	Salix Sericea	Silky Willow	3 GAL.	CONT.
SE	14	Sambucus Canadensis	Elderberry	5 GAL.	CONT.
SH2	143	Sporobolus heterolepis	Prairie Dropseed	1 gal.	CONT.
SH3	15	Stachys byzantina 'Helen von Stein'	Lamb's Ear	1 gal.	CONT.
EK	11	Echinacea purpurea 'Kim's Knee High' TM	Purple Coneflower	1 gal.	CONT.
AF	42	Agastache x 'Blue Fortune'	Blue Fortune Anise Hyssop	1 gal.	CONT.
AF					
DECIDUOUS SHRUBS					
ARO A2	33	Aronia Arbutifolia 'Brilliantissima'	Brilliant Red Chokeberry/Red Chokeberry	3 GAL.	CONT.
IW	16	Ilex Verticillata 'Winter Red'	Winter Red Holly	5 GAL.	CONT.
GROUND COVERS					
HM-3	7,721	NYSDEC Stormwater Basin Mix #3	Highest Zone	seed	
PGMP	424	Perennial and Grass Mix Plugs		Plug	2" PLUG
PMDM	9,394	Prairie Moon Detention Basin Seed Mix	Lowest Zone	seed	

REGENERON
REAL ESTATE & FACILITIES MANAGEMENT

777 Old Saw Mill River Road
Tarrytown, NY 10591-6707
T: 914.847.7400
F: 914.847.7991
www.regeneron.com

BUILDING #17
CAMPUS EXPANSION CHILD DAY-CARE CENTER

899 OLD SAW MILL RIVER ROAD
MOUNT PLEASANT, NY 10591

Civil Engineer:
JMC Site Development Consultants
120 Bedford Road
Armonk, NY 10504
914-273-5225
www.jmcpllc.com

Attorney:
DeiBello Donnellan Weingarten Wise & Wiederkehr, LLP
One North Lexington Avenue, 11th Floor
White Plains, New York 10601
Phone: (914) 681-0200

Geotechnical Engineer:
CS Carlin-Simpson & Associates
61 Main Street
Sayreville, NJ 08872
Phone: (732) 432-5757

Architect:
Gensler
1700 Broadway, Suite 400
New York, New York 10019
Phone: (212) 492-1400
Fax: (212) 492-1472
Landscape Architect (Playground):
Langan
21 Penn Plaza, 360 West 31st Street, 8th Floor
New York, New York 10001
Phone: (212) 479-5400
Fax: (212) 479-5444

MEP/IT/Security Engineer:
Cosentini Associates
498 Seventh Avenue
New York, New York 10018
Phone: (212) 615-3600
Fax: (212) 615-3700

No. Date Description

0	05/20/2022	ISSUED FOR PERMIT
1	06/20/2022	100% CONSTRUCTION DOCUMENTS
2	07/01/2022	100% CONSTRUCTION DOCUMENTS - 1

ALL DRAWINGS AND WRITTEN MATERIALS REPRESENTED ON THIS SHEET CONSTITUTE THE COPYRIGHTED WORK AND ARE THE SOLE PROPERTY OF REGENERON PHARMACEUTICALS. THIS SHEET MAY NOT BE REPRODUCED OR COPIED IN WHOLE OR IN PART, NOR MAY ANY OF THE DRAWINGS OR WRITTEN MATERIALS APPEARING WITHIN BE INCORPORATED INTO ANOTHER WORK FOR ANY REASON WITHOUT THE WRITTEN CONSENT OF REGENERON PHARMACEUTICALS. THIS SHEET MUST BE RETURNED UPON THE REQUEST OF REGENERON PHARMACEUTICALS.

Professional Seal and Signature

ANY ALTERATION OF PLANS, SPECIFICATIONS, PLATS AND REPORTS BEARING THE SEAL OF A LICENSED PROFESSIONAL ENGINEER OR LICENSED LAND SURVEYOR IS A VIOLATION OF SECTION 7209 OF THE NEW YORK STATE EDUCATION LAW, EXCEPT AS PROVIDED FOR BY SECTION 7209, SUBSECTION 2.

Vendor Name: JMC, PLLC
Vendor Project No.: 20090-3
Discipline: Civil
Drawn By: TC
Drawing Title:

LANDSCAPING PLAN

Scale: 1" = 30'

L-100