

NOTES:

- SEE GENERAL NOTES FOR CONCRETE COMPRESSIVE STRENGTH
- T/FOOTING = EL -2'-6" BELOW FF ELEVATION, UON
- TOP OF SLAB EL +217'-3" UON THUS:
X" X" - INDICATES CHANGE IN STRUCTURAL SLAB ELEVATION
- SLAB TO BE 6" THICK NORMALWEIGHT CONCRETE SLAB ON GRADE, UON.
REINFORCED WITH WWF6X8-W2.9XW2.9
- SEE GENERAL NOTES FOR CONCRETE COMPRESSIVE STRENGTH
- FOR ADDITIONAL INFORMATION REFER TO THE FOLLOWING DRAWINGS:
DRAWING LISTS, GENERAL NOTES S0 SERIES DRAWINGS
AND LOADING DIAGRAMS
TYPICAL FOUNDATION DETAILS S2 SERIES DRAWINGS
LATERAL SYSTEM ELEVATIONS, CONNECTION FORCES AND DETAILS S3 SERIES DRAWINGS
STEEL SUPERSTRUCTURE SCHEDULES AND DETAILS S5 SERIES DRAWINGS

7. INDICATES LGMF LOAD BEARING WALL (BY OTHERS)
 INDICATES LGMF SHEAR WALL (BY OTHERS)

REFER TO ARCHITACTURAL DRAWINGS FOR FINAL WALL LAYOUTS, LOCATIONS AND GEOMETRY. GC TO COORDINATE WITH LGMF SUB-CONTRACTOR

8. SEE CIVIL DRAWINGS FOR UNDERSLAB DRAINAGE PIPING. ELEVATIONS RANGE FROM EL 215' TO 215.5'. GC TO CONFIRM/COORDINATE. PROVIDE PENETRATIONS THRU. KNEE WALLS WHERE REQUIRED. SEE 3/S-202 FOR WALL PENETRATION DETAILS

9. SEE MEP DRAWINGS FOR UNDERSLAB PIPING INFORMATION. ELEVATIONS RANGE FROM EL 215.5' TO 216'. GC TO CONFIRM/COORDINATE. PROVIDE VERTICAL PENETRATIONS THRU. SLABS (REF. 6/S-201) AND HORIZONTAL PENETRATIONS THRU. KNEE WALLS (REF. 3/S-202). VERTICAL PENETRATIONS THRU. KNEE WALLS ARE NOT PERMITTED.

10. EXTERIOR WALL FOOTING TO STEP WHERE REQUIRED TO ACCOMMODATE SEWER AND STORMWATER TIE-ING. SEE PLANS FOR LOCATIONS. GC TO COORDINATE. REF. 3/S-200 FOR STEPPED WALL FOOTING DETAILS.

ISOLATED FOOTING SCHEDULE

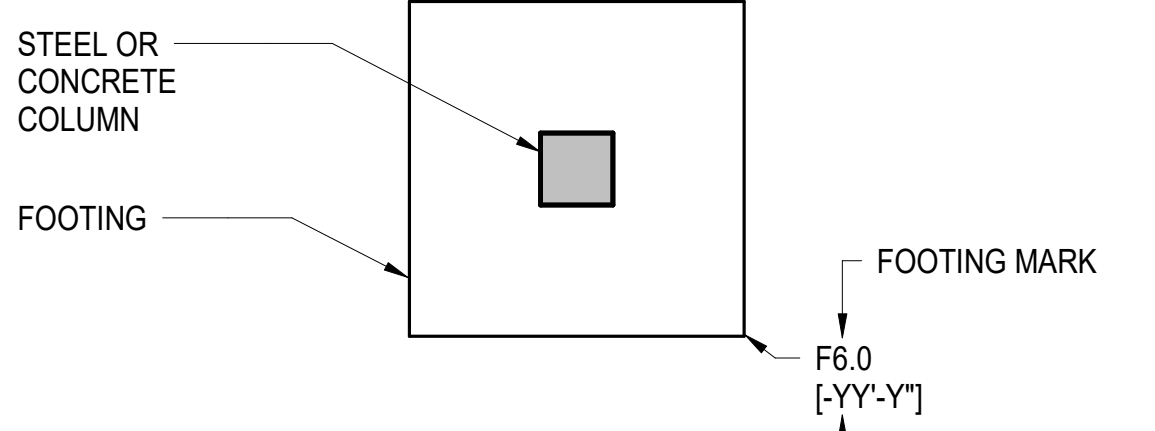
Fc = SEE GENERAL NOTES

MARK	SIZE			REINFORCEMENT		REMARKS
	L	W	H	BOTTOM (SHORT)	TOP BARS	
F3	3'-0"	3'-0"	1'-6"	6#5 E.W.	-	-
F4	4'-0"	4'-0"	1'-6"	9#5 E.W.	-	-
F5	5'-0"	5'-0"	1'-6"	8#5 E.W.	-	-

NOTES:

1. REINFORCEMENT SHALL NOT BE SPLICED WITHOUT PRIOR WRITTEN APPROVAL FROM SER.

ISOLATED FOOTING LEGEND



NOTES:

- T/FOOTING EL SEE SHEET NOTES
- SEE TYPICAL ISOLATED FOOTING SCHEDULE AND DETAILS
- SEE PLAN FOR FOOTING ORIENTATION

2 ISOLATED FOOTING LEGEND

SCALE: 12" = 1'-0"

BASE PLATE SCHEDULE

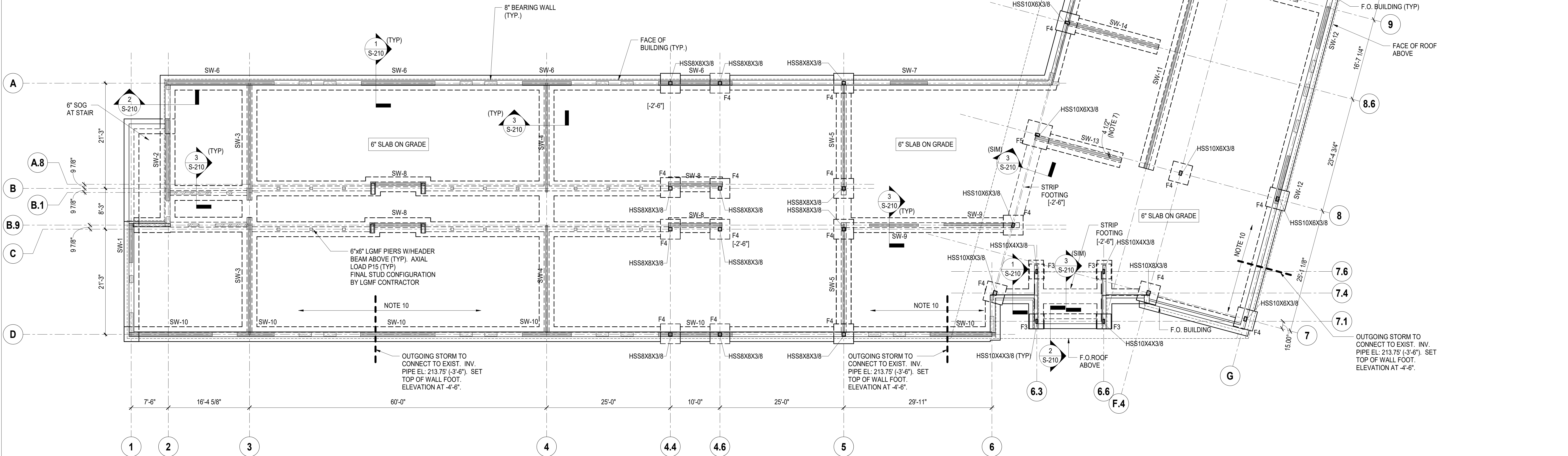
COLUMN SIZE	BASE PLATE SIZE	ANCHOR ROD MARK
HSS10X6	3/4" X 18" X 18"	1
HSS10X8	3/4" X 16" X 16"	1
HSS8X8	3/4" X 16" X 16"	1
HSS10X4	3/4" X 18" X 18"	1

SEE S-500 FOR COLUMN BASE DETAILS

LGMF BEARING WALL SCHEDULE

BEARING WALL	LOCATION	MAX WALL HEIGHT (FT)	STUD SIZE	MIN. STUD SIZE
EXTERIOR	WEST WING	12'-0"	8" @ 16" O.C.	800S162-43
EXTERIOR	EAST WING	14'-0"	8" @ 16" O.C.	800S162-64
INTERIOR	WEST WING	12'-0"	6" @ 16" O.C.	600S162-33
INTERIOR	EAST WING	16'-0"	6" @ 16" O.C.	600S200-43
EXTERIOR	EAST WING - GRID 14	SLOPES 19'-0" AT GRID E.	12"	1200S
EXTERIOR	EAST WING - GRID E B.T.W. 13/14	19'-0"	12"	1200S

NOTE: FINAL STUD SIZE AND SPACING TO BE VERIFIED BY SUB-CONTRACTOR BASED ON INFORMATION PROVIDED AND PROJECT LOADING CRITERIA NOTE IN S-500 SERIES. MINIMUM DEPTH OF STUDS TO BE AS NOTED IN TABLES ABOVE



1 GROUND FLOOR FRAMING PLAN

SCALE: 1/8" = 1'-0"

REGENERON
REAL ESTATE &
FACILITIES MANAGEMENT

777 Old Saw Mill River Road
Tarrytown, NY 10591-6707
T: 914.847.7400
F: 914.847.7991
www.regeneron.com

Building #17
Campus Expansion Child
Day-care Center

777 Old Saw Mill River Road
Mount Pleasant, NY 10591
Project No. B17-DAYCARE

Architect
Gensler

1700 Broadway, Suite 400
New York, NY 10019
(212) 492-1400 Phone
(212) 492-1472 Fax

Structural Engineer

Thornton Tomasetti
120 Broadway, 15th Floor
New York, NY 10271
(917) 661-7800 Phone
(917) 661-7801 Fax

MEP / IT / Security Engineer

Cosentini Associates
498 Seventh Avenue
New York, NY 10018
(212) 615-3600 Phone
(212) 615-3700 Fax

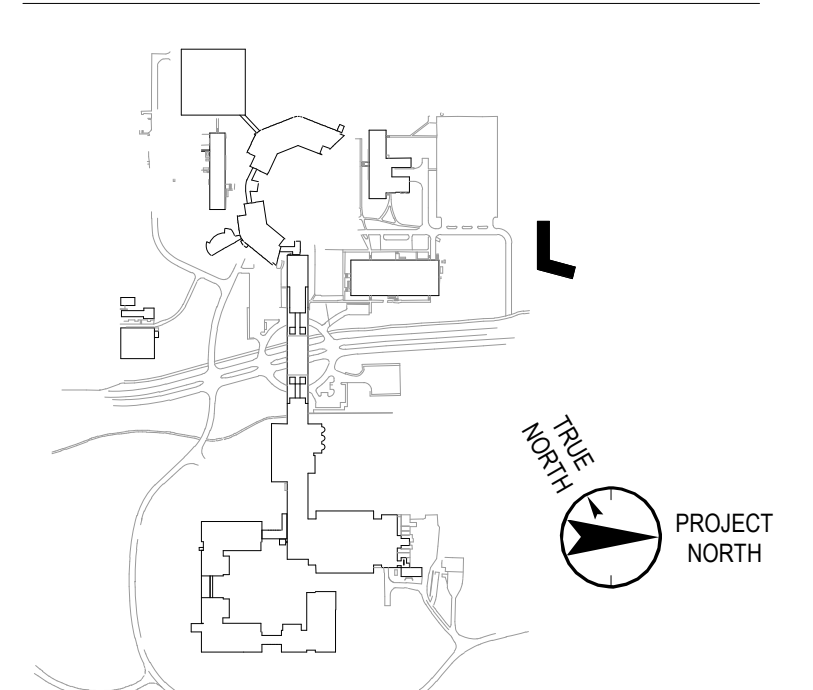
Civil Engineer

JMC
120 Bedford Road
Armonk, NY 10504
(914) 273-5225 Phone
(914) 273-2102 Fax

Landscape Architect

Langan
21 Penn Plaza, 360 West 31st Street, 8th Floor
New York, NY 10001
(212) 479-5400 Phone
(212) 479-5444 Fax

Key Plan



No. Date Description

05.20.2022 ISSUED FOR PERMIT
06.20.2022 100% CONSTRUCTION DOCUMENTS
07.01.2022 100% CONSTRUCTION DOCUMENT - 1

Plot Date: 10/29/21

ALL DRAWINGS AND WRITTEN MATERIALS REPRESENTED ON THIS SHEET CONSTITUTE THE
COPYRIGHTED WORK AND ARE THE SOLE PROPERTY OF REGENERON PHARMACEUTICALS.
THIS SHEET MAY NOT BE REPRODUCED OR COPIED IN WHOLE OR IN PART, NOR MAY ANY
OF THE DRAWINGS OR WRITTEN MATERIALS BE REPRODUCED OR COPIED IN WHOLE OR IN PART,
WITHOUT THE WRITTEN CONSENT OF REGENERON PHARMACEUTICALS. ANY REPRODUCTION
OF THIS SHEET WITHOUT THE WRITTEN CONSENT OF REGENERON PHARMACEUTICALS
CONSTITUTES A VIOLATION OF THE COPYRIGHT AND TRADE SECRET LAWS OF THE UNITED STATES
AND MAY BE SUBJECT TO CIVIL AND CRIMINAL PENALTIES. REGENERON PHARMACEUTICALS
RESERVES THE RIGHT TO MODIFY OR WITHDRAW ANY OF THE DRAWINGS OR WRITTEN MATERIALS
AT ANY TIME WITHOUT NOTICE. REGENERON PHARMACEUTICALS IS NOT RESPONSIBLE FOR
ANY ERRORS OR OMISSIONS IN THIS SHEET. REGENERON PHARMACEUTICALS IS NOT
RESPONSIBLE FOR ANY CONSTRUCTION DEFECTS OR DAMAGES TO THE PROJECT OR TO THE
PROPERTY OF ANY OTHER PARTY. REGENERON PHARMACEUTICALS IS NOT RESPONSIBLE FOR
ANY CONSTRUCTION DEFECTS OR DAMAGES TO THE PROJECT OR TO THE PROPERTY OF ANY
OTHER PARTY. REGENERON PHARMACEUTICALS IS NOT RESPONSIBLE FOR ANY CONSTRUCTION
DEFECTS OR DAMAGES TO THE PROJECT OR TO THE PROPERTY OF ANY OTHER PARTY.

Professional Seal and Signature

Vendor Name: GENSLER
Vendor Project No. 006.3608.000
Discipline: Drawn By: Author
GROUND FLOOR PLAN

Scale: As indicated Floor:

S-100