

777 Old Saw Mill River Road
Tarrytown, NY 10591-6707
T: 914.847.7400
F: 914.847.7991
www.regeneron.com

Building #17
Campus Expansion Child
Day-care Center

777 Old Saw Mill River Road
Mount Pleasant, NY 10591
Project No. B17-DAYCARE

Architect
Gensler

1700 Broadway, Suite 400
New York, NY 10019
(212) 492-1400 Phone
(212) 492-1472 Fax

Structural Engineer

Thornton Tomasetti
120 Broadway, 15th Floor
New York, NY 10271
(917) 661-7800 Phone
(917) 661-7801 Fax

MEP / IT / Security Engineer

Cosentini Associates
498 Seventh Avenue
New York, NY 10018
(212) 615-3600 Phone
(212) 615-3700 Fax

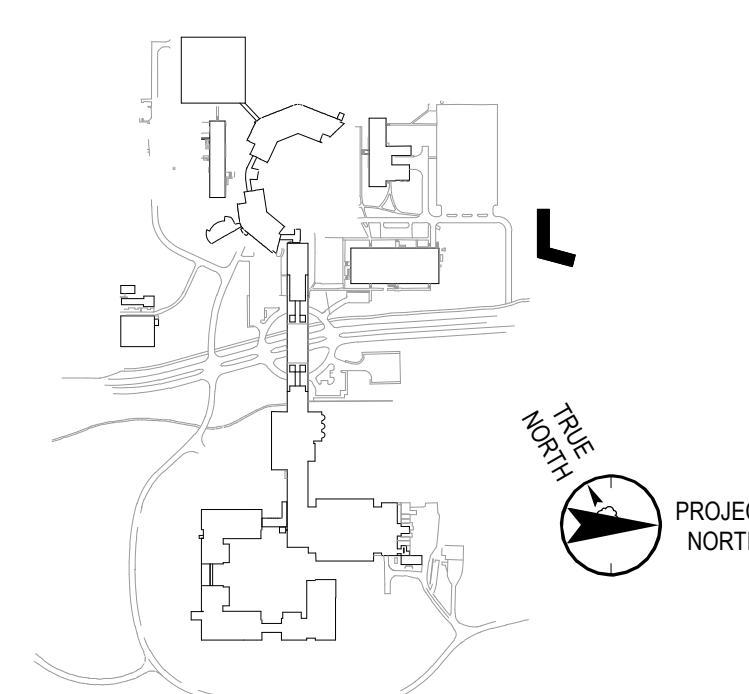
Civil Engineer

JMC
120 Bedford Road
Armonk, NY 10504
(914) 273-5225 Phone
(914) 273-2102 Fax

Landscape Architect

Langan
21 Penn Plaza, 360 West 31st Street, 8th Floor
New York, NY 10001
(212) 479-5400 Phone
(212) 479-5444 Fax

Key Plan



No. Date Description

05.20.2022	ISSUED FOR PERMIT
06.20.2022	100% CONSTRUCTION DOCUMENTS
07.01.2022	100% CONSTRUCTION DOCUMENT-1

Plot Date: 04/19/10

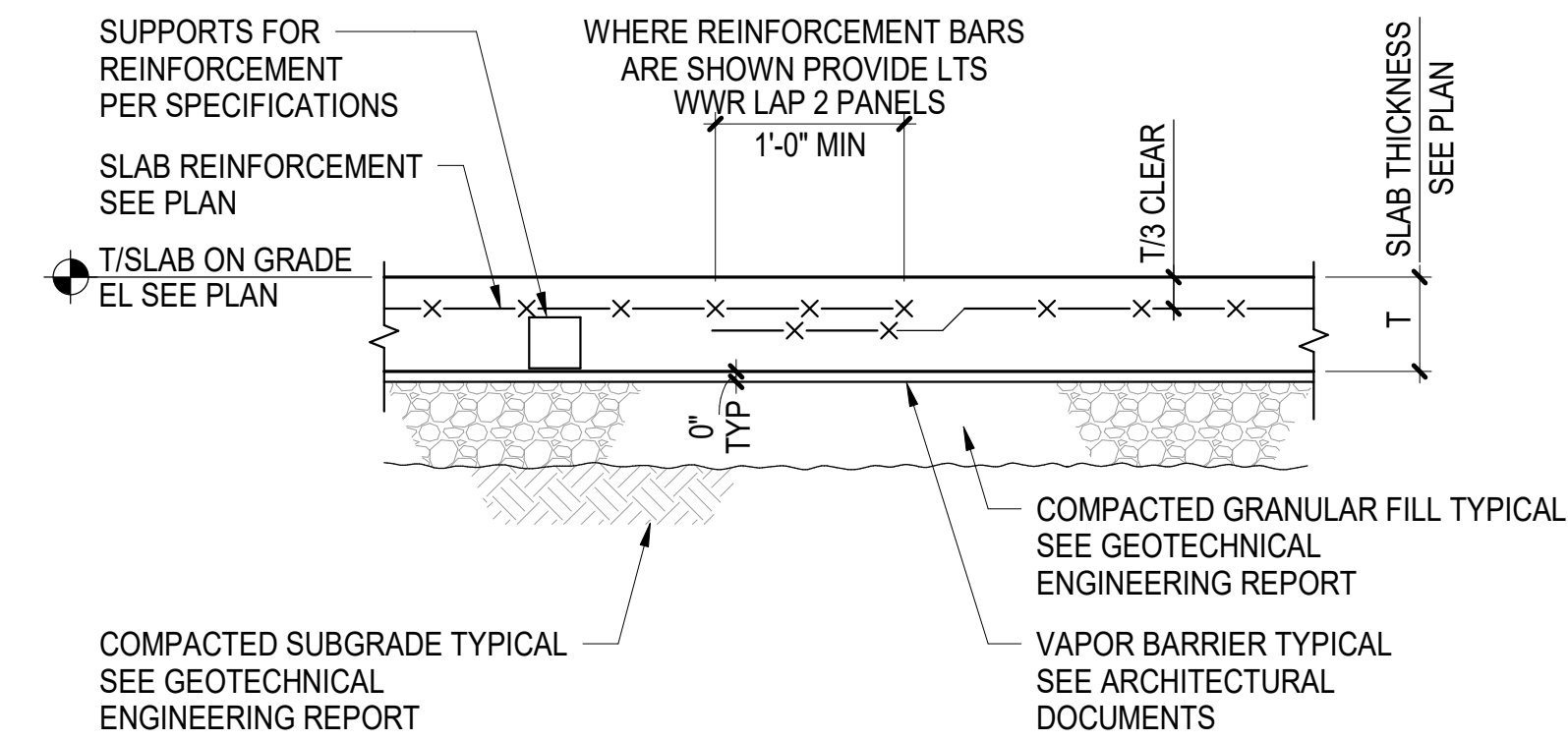
ALL DRAWINGS AND WRITTEN MATERIALS REPRESENTED ON THIS SHEET CONSTITUTE THE
COPYRIGHTED WORK AND ARE THE SOLE PROPERTY OF REGENERON PHARMACEUTICALS.
THIS SHEET MAY NOT BE REPRODUCED OR COPIED IN WHOLE OR IN PART, NOR MAY ANY
OF THE DRAWINGS OR WRITTEN MATERIALS BE REPRODUCED, COPIED, OR INCORPORATED INTO
ANOTHER WORK FOR ANY REASON WITHOUT THE WRITTEN CONSENT OF REGENERON
PHARMACEUTICALS. IF REGENERON NAMES OR AUTHORIZES REUSE OF ANY
SUCH DOCUMENTS OR INFORMATION PRODUCED BY A DESIGN PROFESSIONAL OUTSIDE OF
THE PROJECT WITHOUT THE EXPRESS WRITTEN CONSENT OF DESIGN PROFESSIONAL,
REGENERON ASSUMES FULL RESPONSIBILITY FOR ANY AND ALL RISKS INVOLVED IN SUCH
REUSE.

Professional Seal and Signature

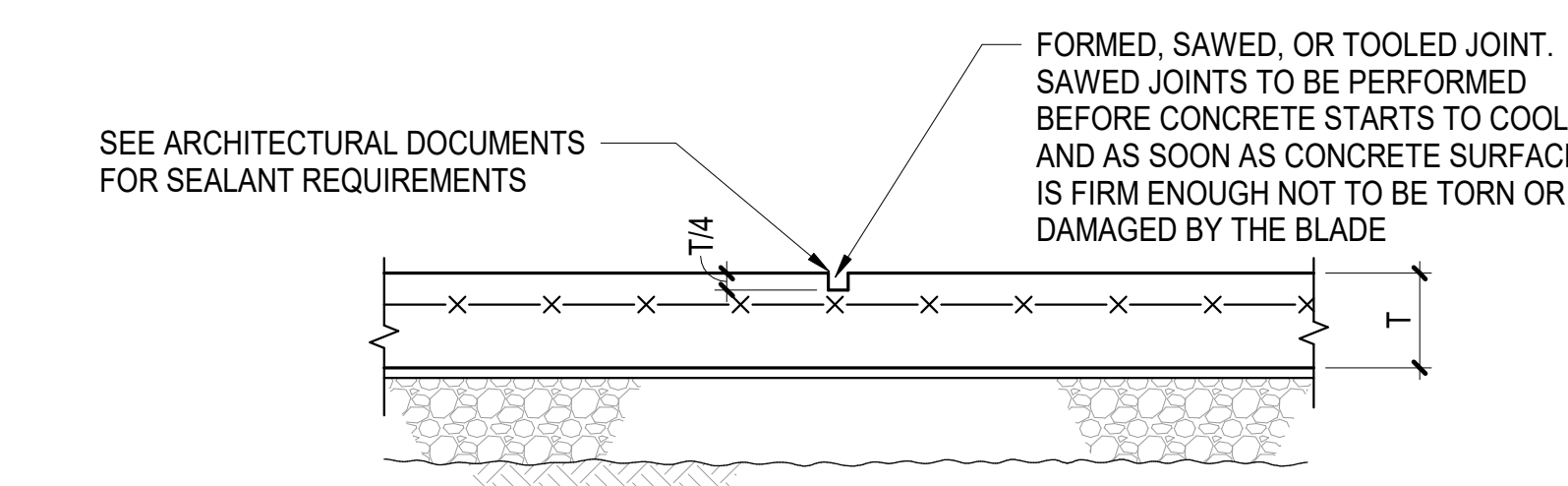
Vendor Name: GENSLER
Vendor Project No.: 006.3608.000
Discipline: Drawn By: Author
**TYPICAL SLAB ON GRADE
DETAILS**

Scale: As indicated Floor:

S-201



A SLAB ON GRADE



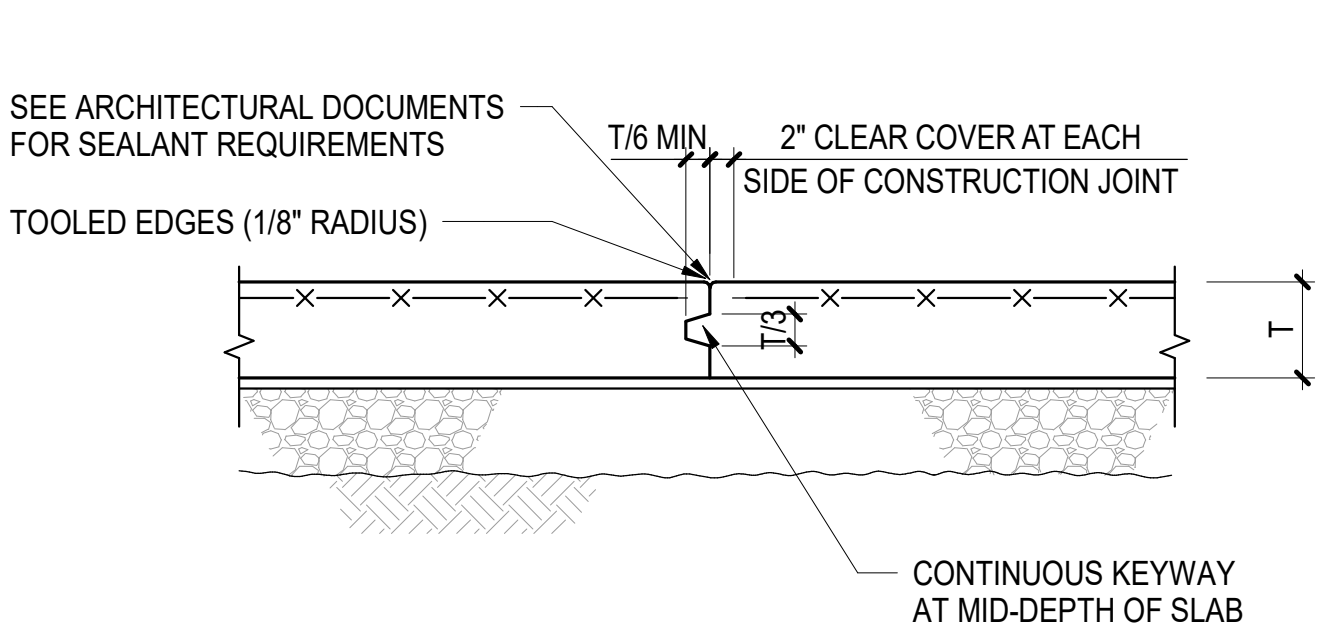
C CONTRACTION JOINT

NOTES:

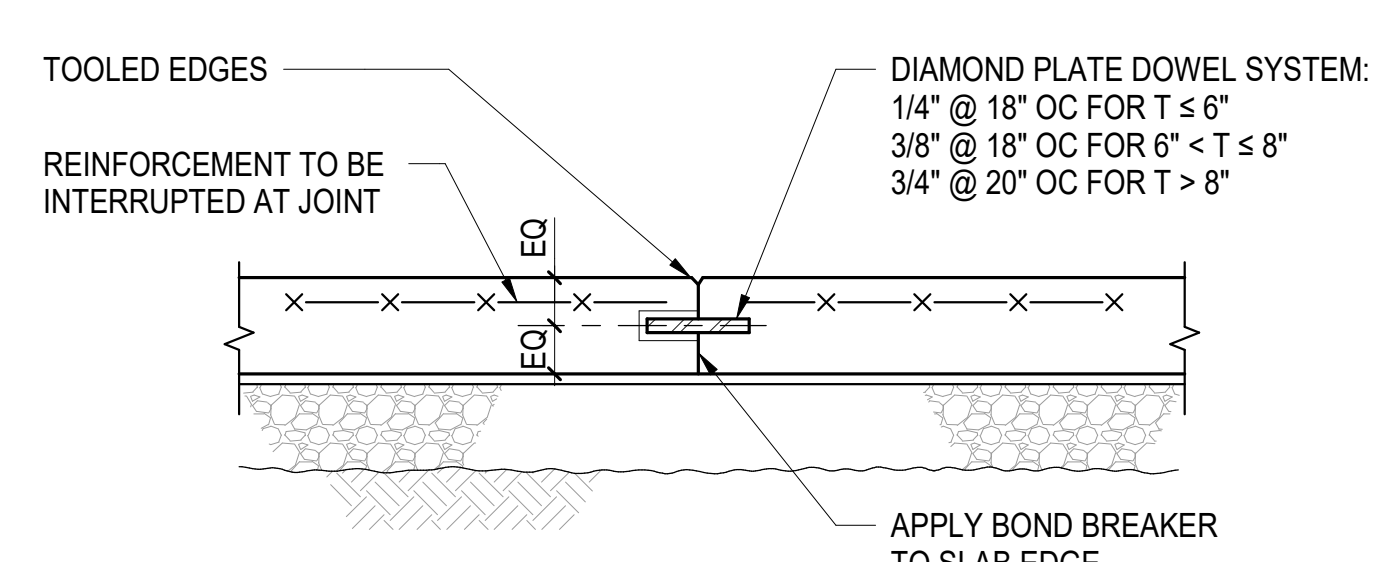
- WHERE NOT INDICATED ON DRAWINGS PROVIDE JOINTS AT COLUMN CENTERLINES AND BETWEEN COLUMN CENTERLINES WITH SPACING OF JOINTS NOT TO EXCEED 36 TIMES THE SLAB THICKNESS (T-INCHES)

1 TYPICAL SLAB ON GRADE DETAILS

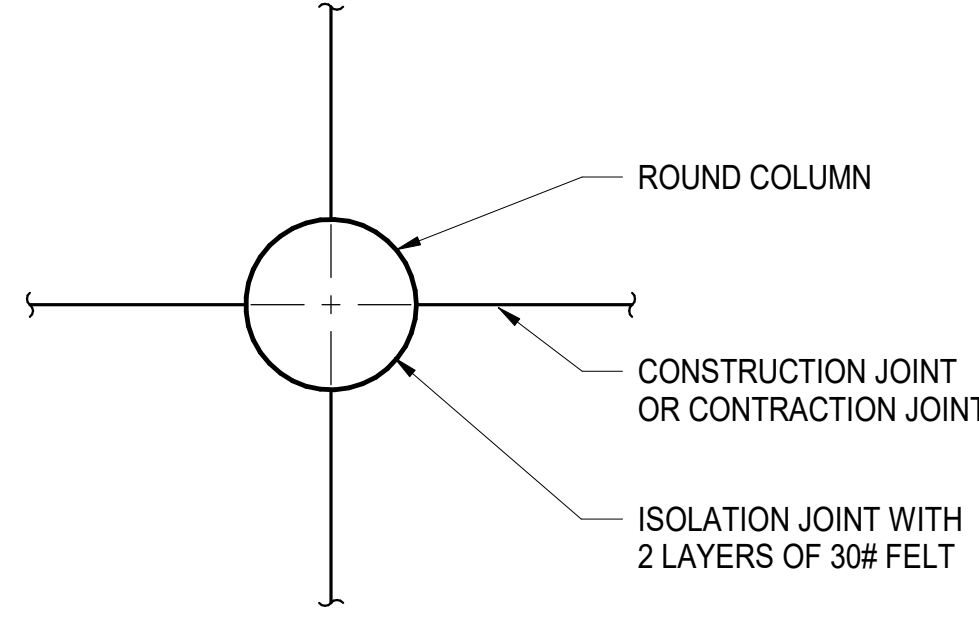
NOT TO SCALE



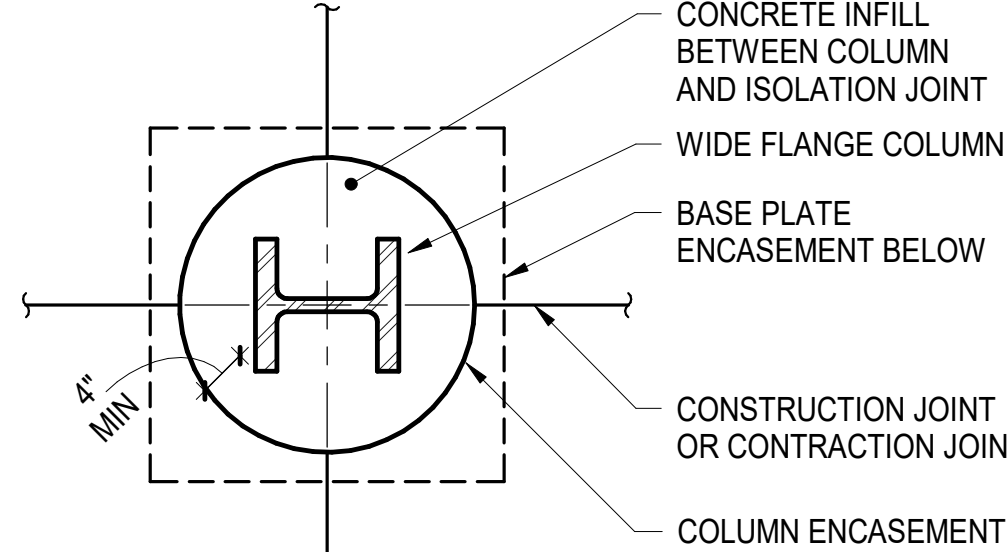
B CONSTRUCTION JOINT / CONTRACTION JOINT



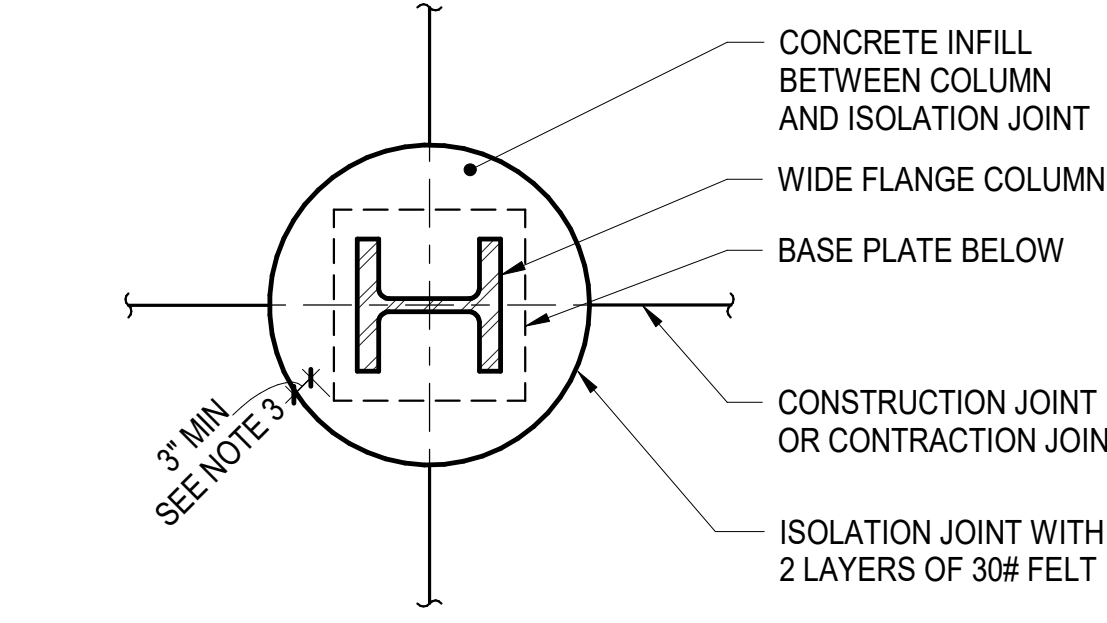
D DOWELED CONSTRUCTION JOINT (WHERE INDICATED ON PLAN)



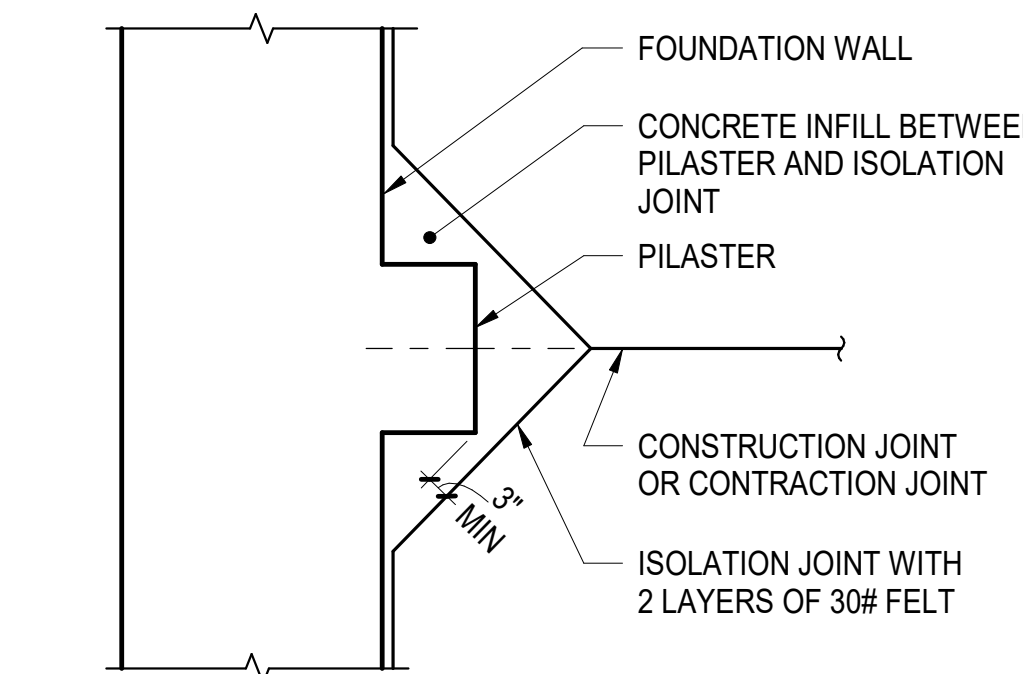
A ROUND COLUMN



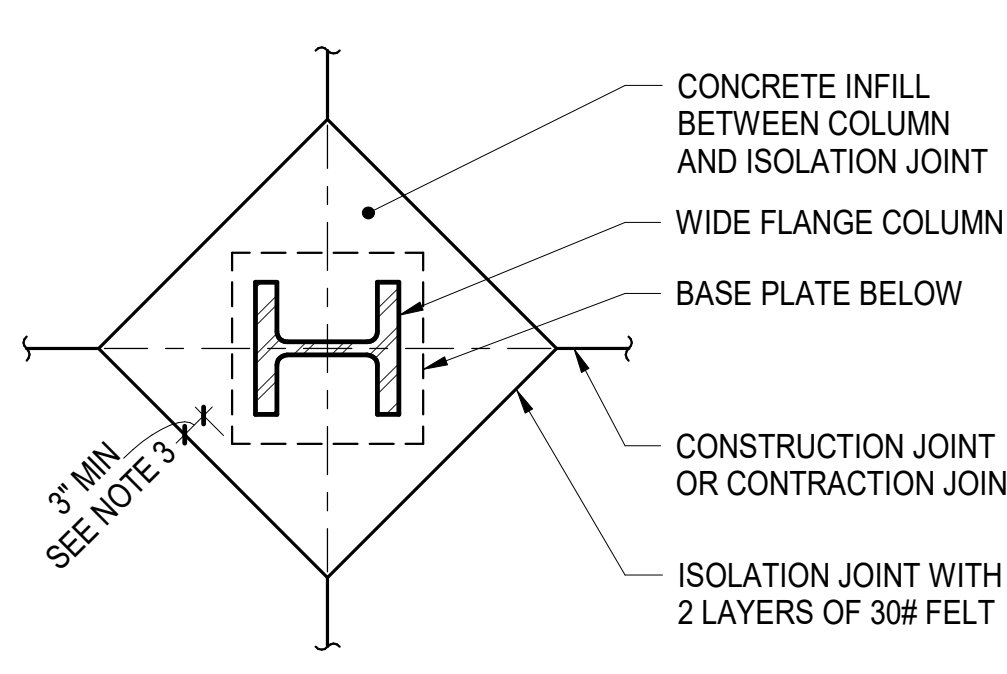
B CONCRETE ENCASE COLUMN AND BASE PLATE WHERE INDICATED ON PLAN



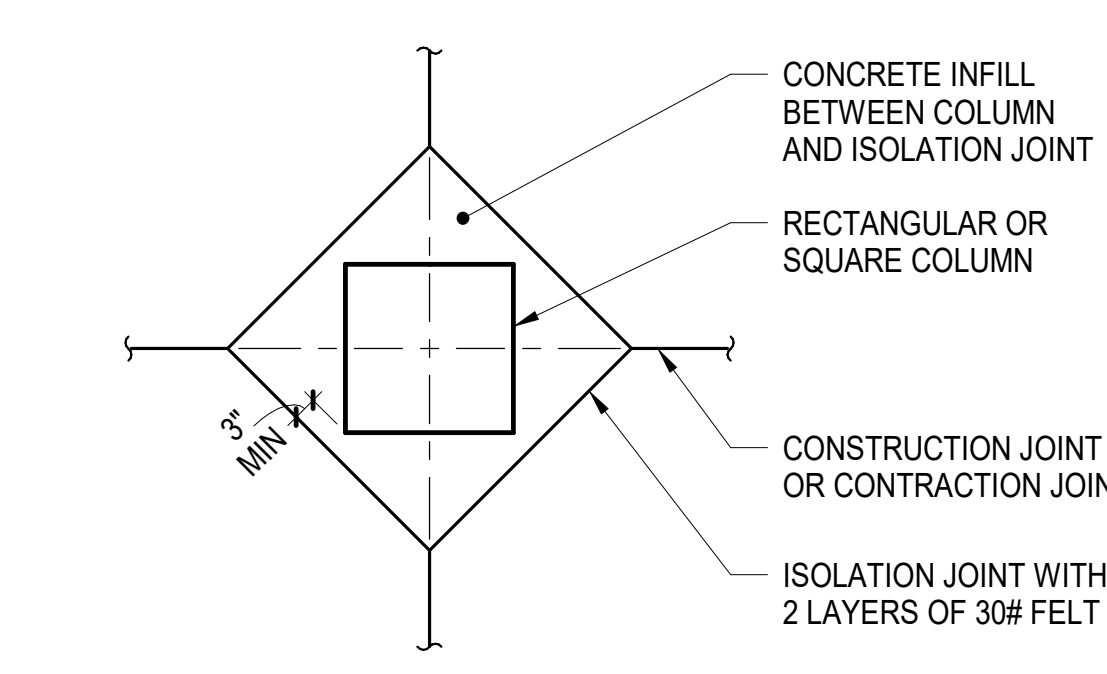
C TYPICAL BASE PLATE WITHIN CONCRETE INFILL (ROUND ISOLATION JOINT OPTION)



D PILASTER



E TYPICAL BASE PLATE WITHIN CONCRETE INFILL UNLESS OTHERWISE NOTED



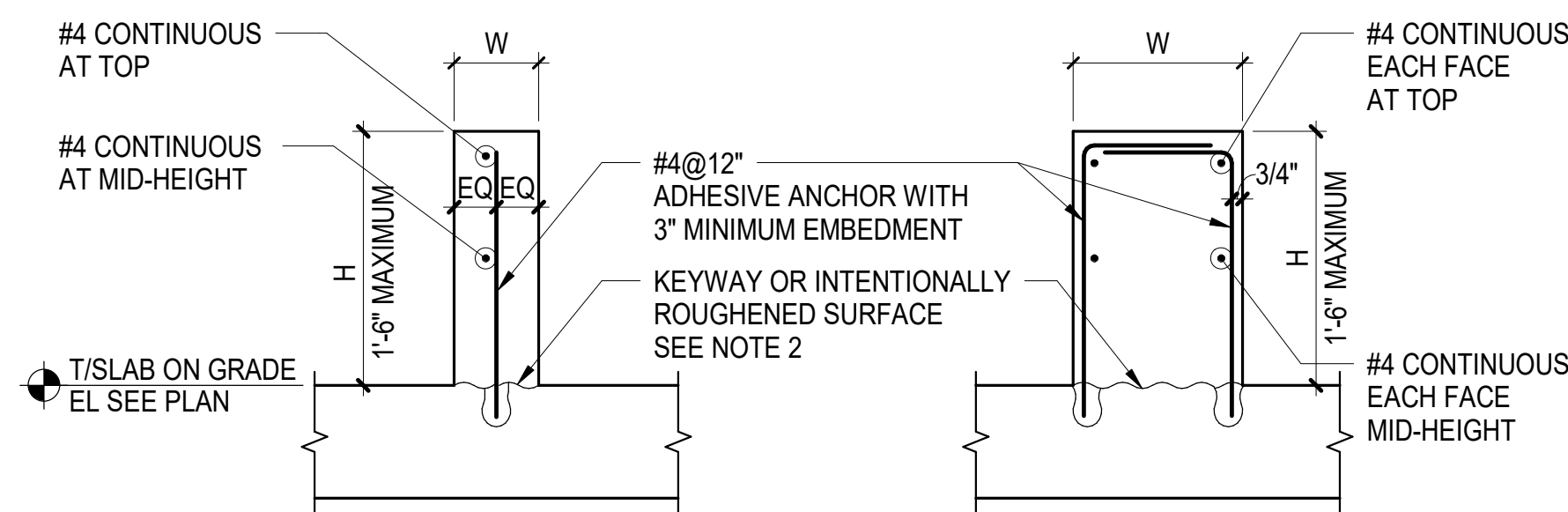
F RECTANGULAR OR SQUARE COLUMN

NOTES:

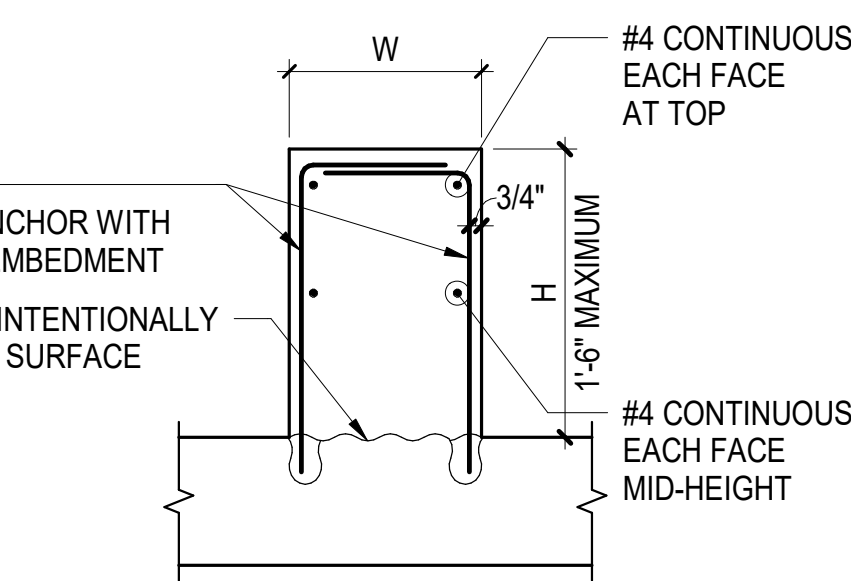
- SEE TYPICAL SLAB ON GRADE DETAILS FOR JOINT SPACING REQUIREMENTS
- CONCRETE INFILL BETWEEN COLUMN AND ISOLATION JOINT TO BE POURED AFTER ALL THE SLABS SUPPORTED BY THE COLUMN HAVE BEEN POURED
- PROVIDE ADDITIONAL CLEARANCE AS REQUIRED TO ENSURE 3" MINIMUM CONCRETE COVER OVER BASE PLATE AND ANCHOR RODS BELOW.

2 TYPICAL ISOLATION JOINT DETAILS AT SLAB ON GRADE

NOT TO SCALE



A NARROW CURB - 4" ≤ W ≤ 8"



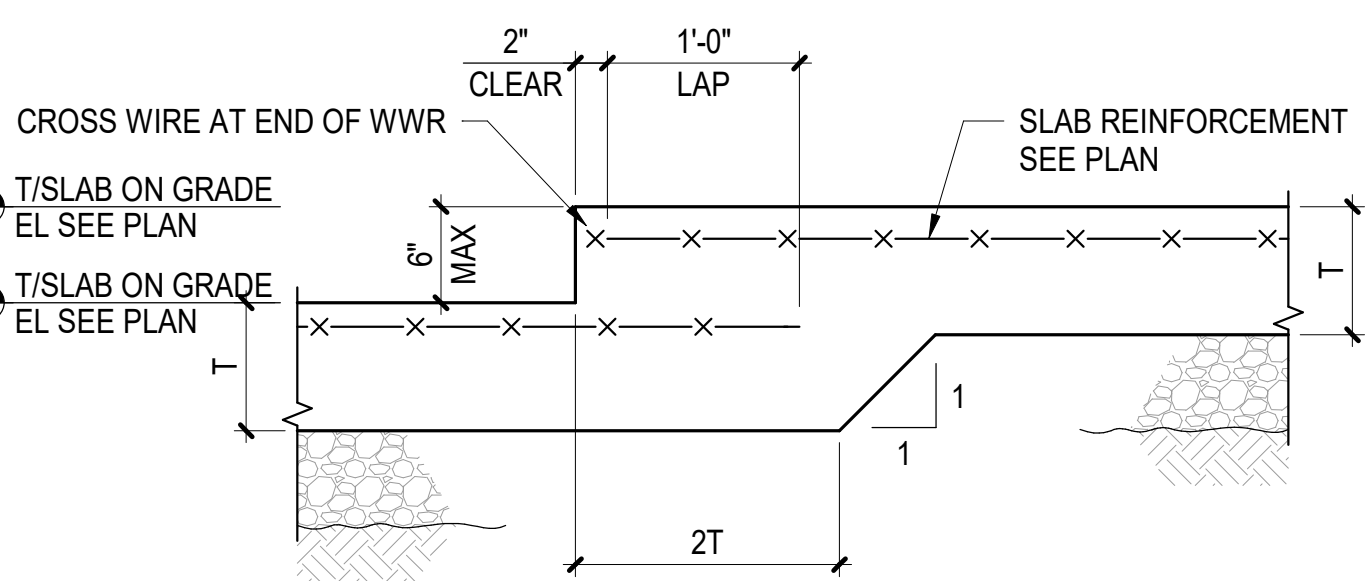
B WIDE CURB - W ≥ 8"

NOTES:

- FOR SIZE AND LOCATION SEE ARCHITECTURAL, MEP, OR STRUCTURAL DRAWINGS
- ROUGHEN SURFACE OF SLAB TO 1/4" AMPLITUDE, CLEAN THOROUGHLY AND APPLY BONDING AGENT IMMEDIATELY BEFORE CASTING CURB
- THIS DETAIL IS APPLICABLE AT CURBS FOR NON-STRUCTURAL ELEMENTS SUCH AS SKYLIGHTS, INTERIOR PARTITIONS, AND INTERIOR RAILINGS
- SEE ARCHITECTURAL DRAWINGS FOR EMBEDDED PLATES AND BLOCKOUTS REPLACE REINFORCEMENT INTERRUPTED BY BLOCKOUTS
- CORING AND/OR CUTTING OF REINFORCEMENT IS NOT PERMITTED USE EMBED PLATES FOR ATTACHMENT TO CURBS

5 TYPICAL CURB DETAILS AT INTERIOR

SCALE: NOT TO SCALE

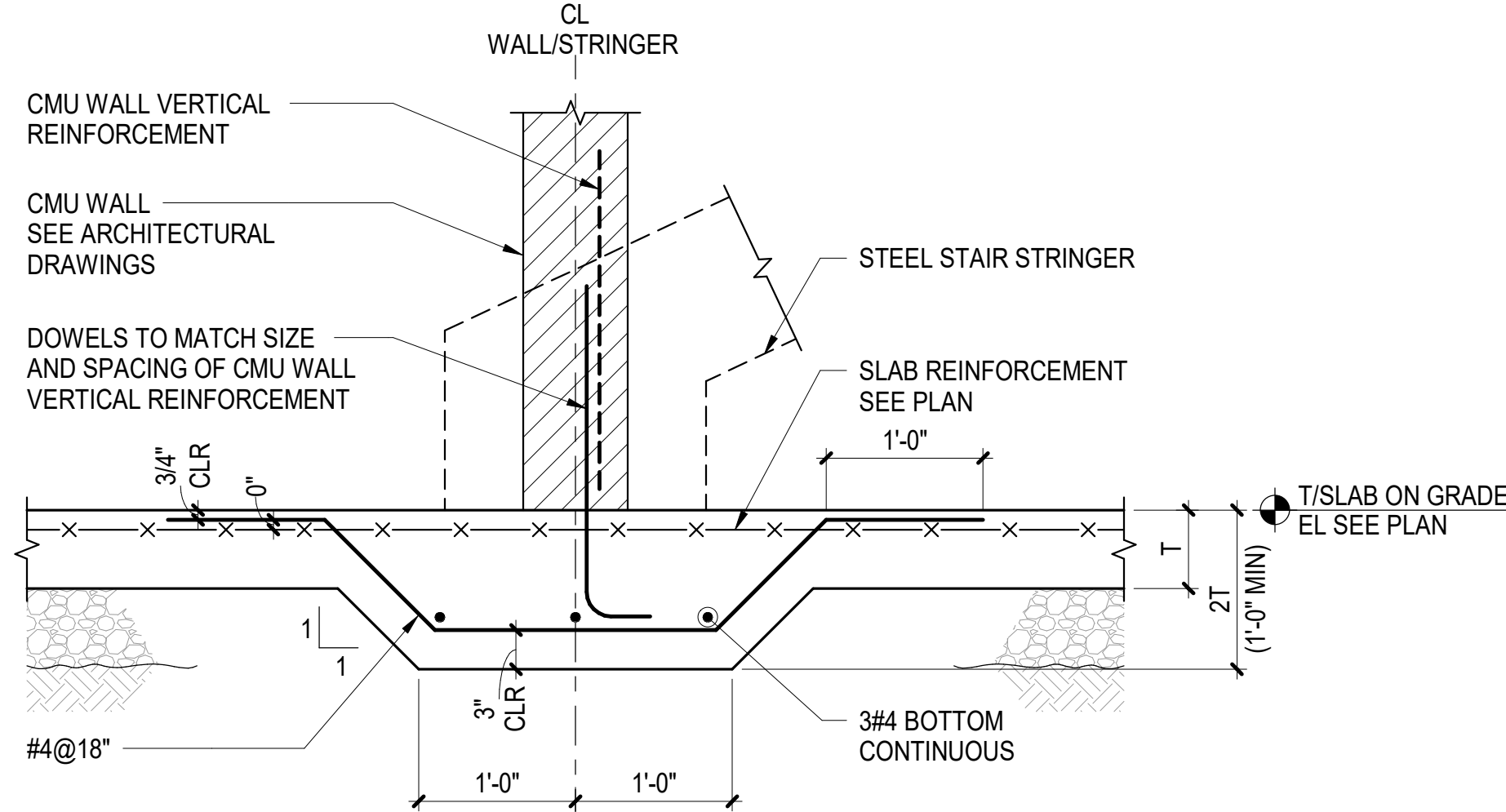


3 TYPICAL SLAB ON GRADE STEP 6" MAXIMUM

NOT TO SCALE

NOTES:

- SEE TYPICAL SLAB ON GRADE DETAILS FOR ADDITIONAL INFORMATION

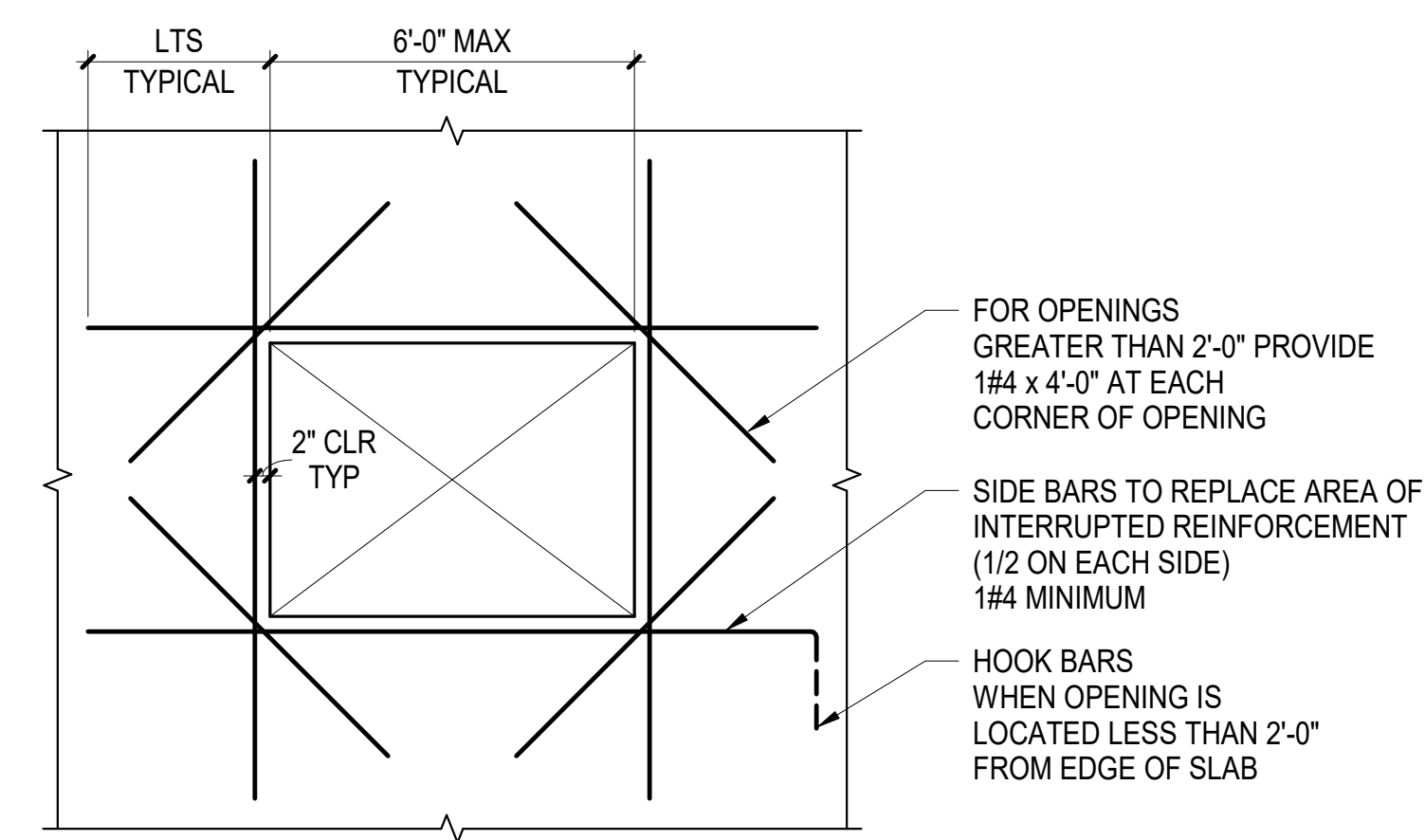


4 TYPICAL THICKENED SLAB ON GRADE AT NON-BEARING CMU WALL OR STAIR STRINGER

NOT TO SCALE

NOTES:

- SEE ARCHITECTURAL DRAWINGS FOR LOCATIONS OF WALLS AND STAIRS
- SEE TYPICAL SLAB ON GRADE DETAILS FOR MORE INFORMATION



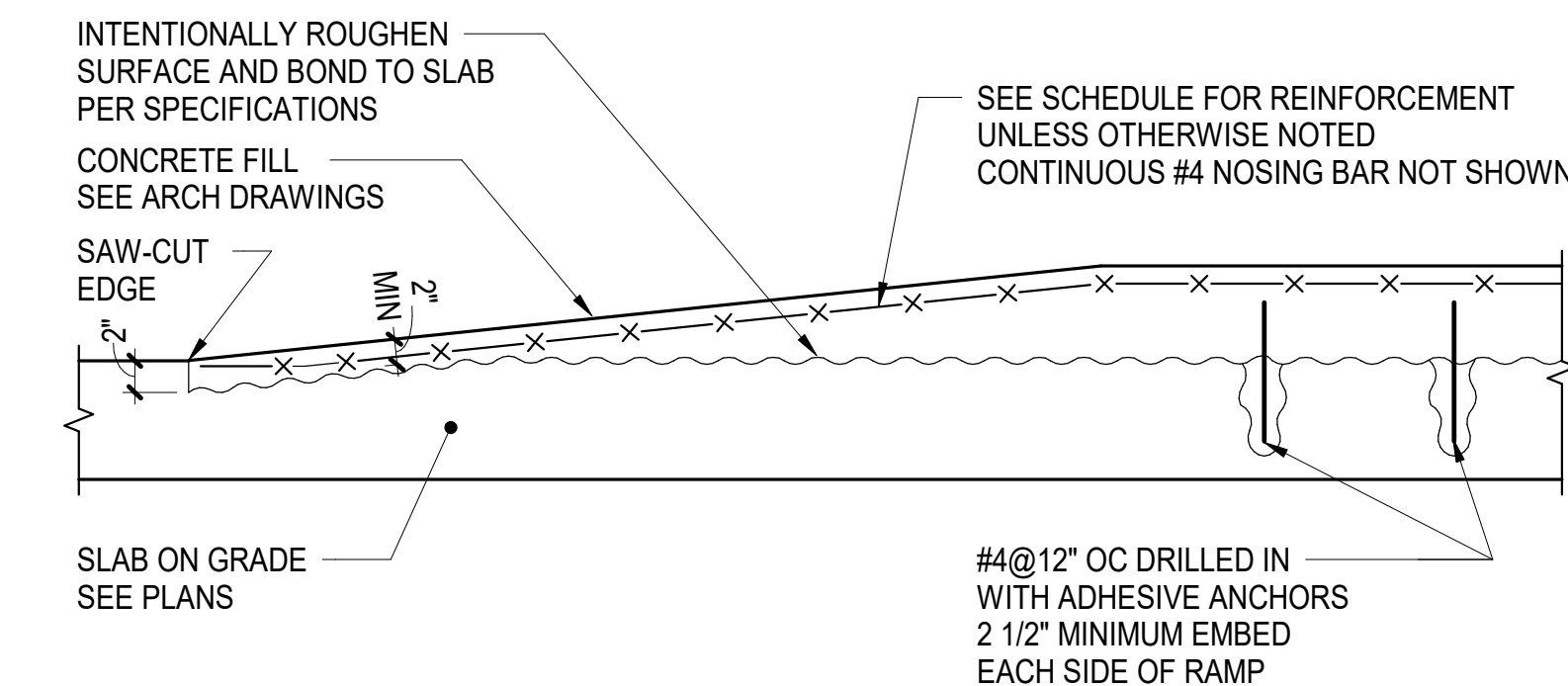
A PLAN

NOTES:

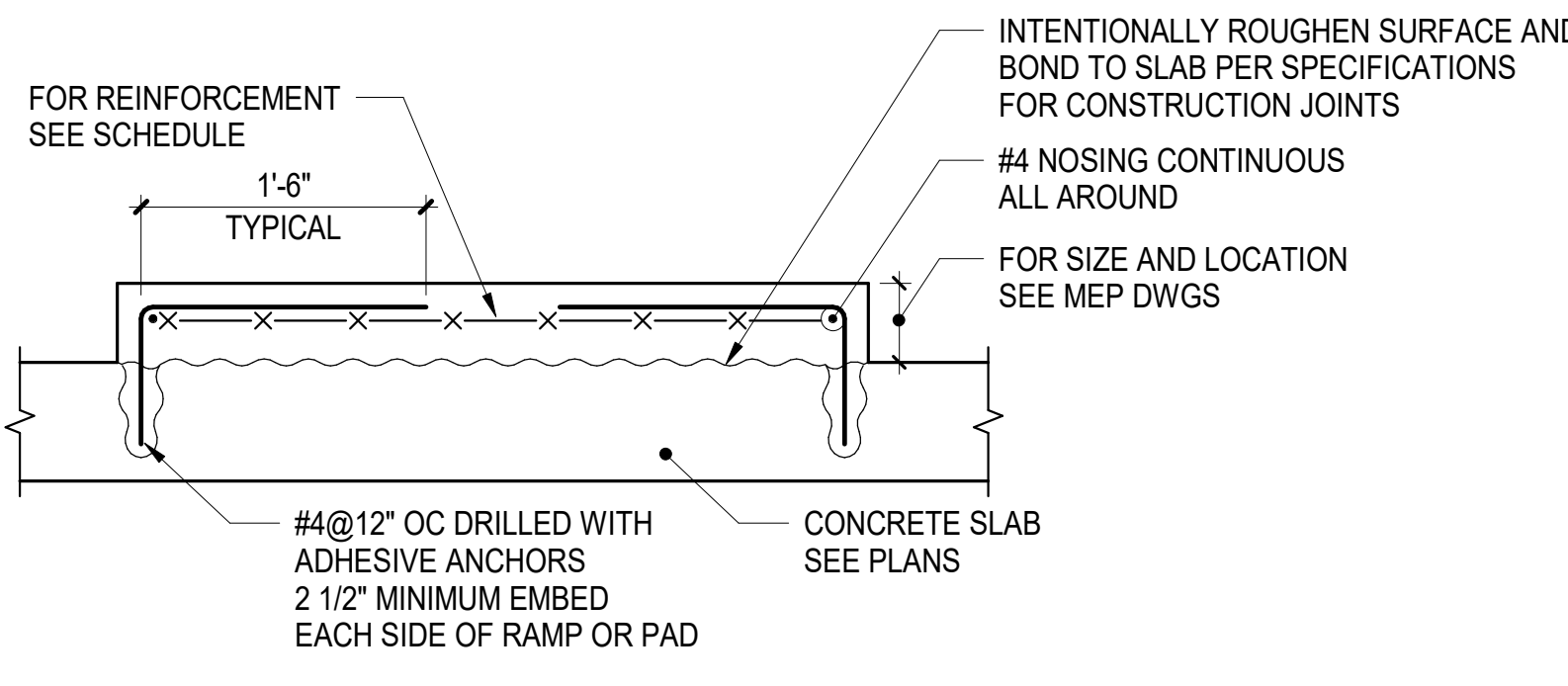
- FOR SIZE OF OPENINGS SEE ARCHITECTURAL DRAWINGS
- ADDITIONAL REINFORCEMENT IS NOT REQUIRED AT OPENINGS THAT DO NOT INTERRUPT THE TYPICAL REINFORCEMENT

6 TYPICAL SLAB ON GRADE DETAIL OF ADDITIONAL REINFORCEMENT AT ANY OPENINGS OR AT STEP GREATER THAN 6" UP TO 3'-0"

NOT TO SCALE



A DETAIL AT RAMP



B SECTION AT RAMP OR PAD

THICKNESS	REINFORCEMENT
≤ 3"	WWR 6x6 - W2.9xW2.9
≤ 4"	WWR 6x6 - W4.0xW4.0
≤ 6"	#4 @ 12" TOP EACH WAY
≤ 12"	#4 @ 12" TOP & BOTTOM EACH WAY

NOTES:

- THIS DETAIL IS NOT APPLICABLE TO GENERAL RAISED SLAB AREA HIGHER THAN 4" OTHER THAN MECHANICAL PADS AND HOUSEKEEPING PADS

7 TYPICAL DETAIL OF CONCRETE FILL HOUSEKEEPING PAD / MECHANICAL PAD / RAMP

NOT TO SCALE