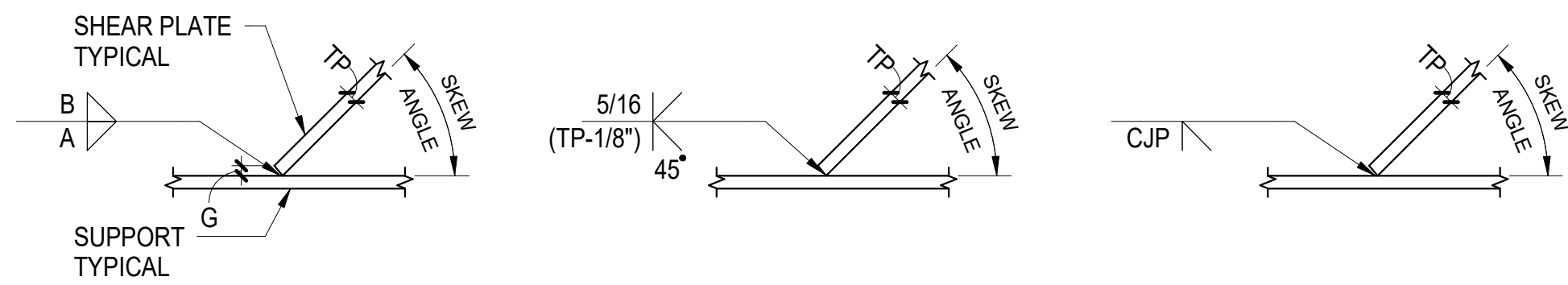


P:\E-BM-360-0006-3608-000-Regeneron_Day_Care_Facility_Tarrytown\21270-02-Regeneron_Day_Care_Facility.dgn PLOTTED: ON:06/12/18

NOTES:

- ALL SHEAR CONNECTIONS PROVIDED ON THIS SHEET ARE COMPLETELY DESIGNED REFER TO STRUCTURAL GENERAL NOTES FOR ADDITIONAL REQUIREMENTS
- ALL CONNECTION CAPACITIES PROVIDED IN SCHEDULES ARE STRENGTH LEVEL PER AISC LOAD AND RESISTANCE FACTOR DESIGN. SELECT CONNECTION CAPACITY BASED ON FACTORED SHEAR REACTIONS SHOWN ON PLAN AND REQUIREMENTS OF DETAILS.
- SINGLE PLATE, SINGLE ANGLE, OR DOUBLE ANGLE SHEAR ONLY CONNECTIONS MAY BE USED AT THE CONTRACTOR'S OPTION UNLESS OTHERWISE NOTED IN THE CONSTRUCTION DOCUMENTS
- ALL CONNECTIONS SHOWN ARE DESIGNED UTILIZING BOLTS INDICATED
- THE FOLLOWING MINIMUM BOLT EDGE DISTANCES AND SPACING SHALL BE USED:
HORIZONTAL EDGE DISTANCE = 2 x BOLT DIAMETER
VERTICAL EDGE DISTANCE = 1-1/2"
SPACING = 3"
- ALL CONNECTIONS SHOWN ARE DESIGNED UTILIZING PLATE MATERIAL CONFORMING TO ASTM A572 OR A529 GRADE 50
- PROVIDE STANDARD HOLES IN BEAM. STANDARD OR HORIZONTAL SHORT SLOTTED HOLES ARE PERMITTED IN THE SINGLE PLATE
- TYPICAL SINGLE PLATE SHEAR CONNECTION DETAILS SHOWN ARE FOR PERPENDICULAR FRAMING CONDITIONS.
AT SKEWED FRAMING CONDITIONS, PROVIDE WELDS AS INDICATED IN TYPICAL SKEWED SINGLE PLATE WELD DETAILS.



A FILLET WELD

B PJP WELD

C CJP WELD

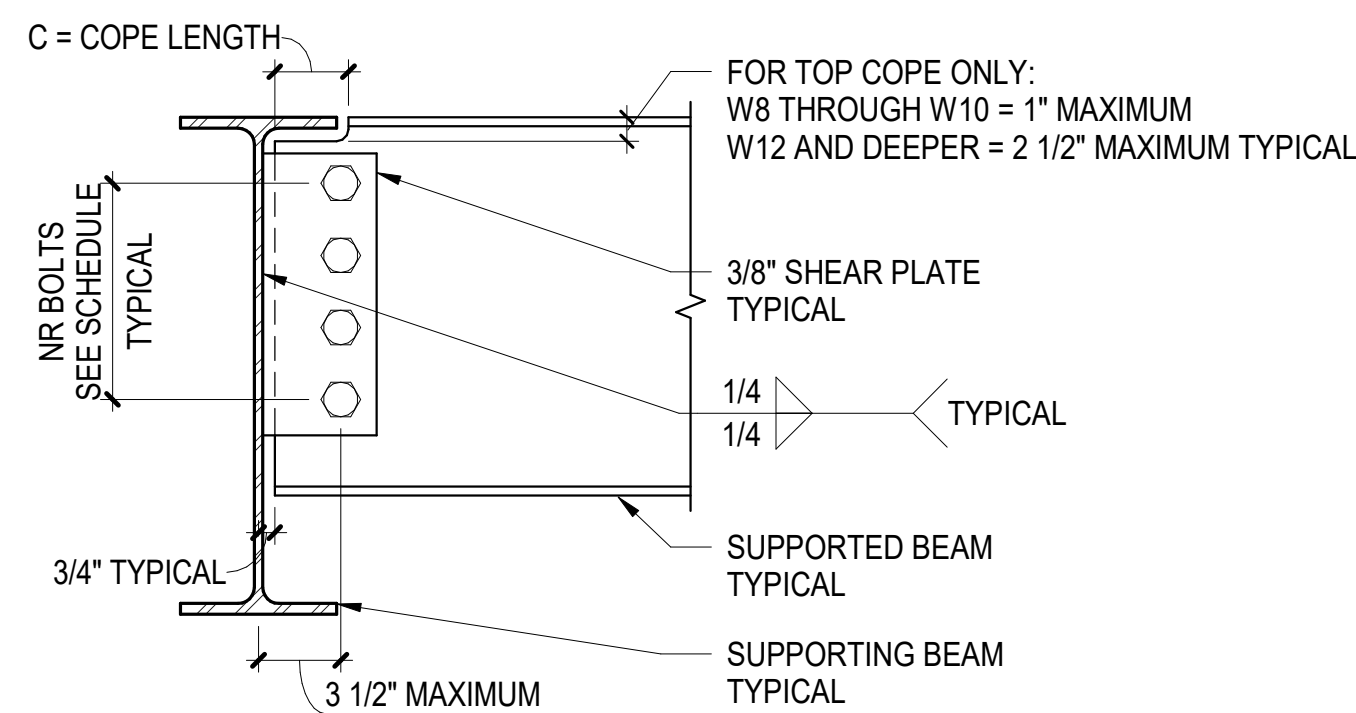
SKEWED SINGLE PLATE WELD SCHEDULE		
SKEW ANGLE (DEGREES)	WELD A	WELD B
≤ 30	CJP WELD	
> 30 - 45	PJP WELD	
> 45 - 50	D + 1/8"	(D*1.31) + G
> 50 - 55	D + 1/8"	(D*1.28) + G
> 55 - 60	D + 1/8"	(D*1.25) + G
> 60 - 65	D	(D*1.23) + G
> 65 - 70	D	(D*1.19) + G
> 70 - 75	D	(D*1.16) + G
> 75 - 80	D	(D*1.12) + G
> 80 - 85	D	(D*1.08) + G
> 85 - 90	D	D + G

NOTES:

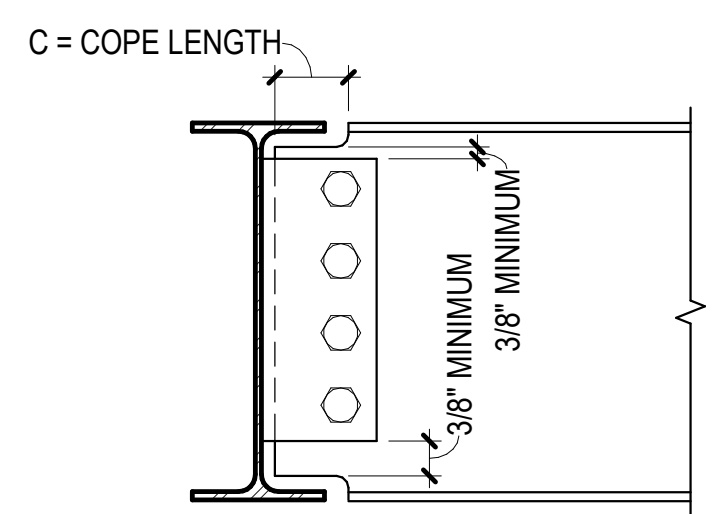
- DETAIL NOTATIONS:
TP INDICATES THICKNESS OF PLATE
D INDICATES FILLET WELD SIZE AS SPECIFIED FOR PERPENDICULAR FRAMING CONDITION (OTHER DETAILS THIS SHEET)
G INDICATES GAP IF SQUARE CUT PLATE IS USED
- FILLET WELDS:
FOR G ≤ 3/16" USE SQUARE CUT PLATE
FOR G > 3/16": BEVEL PLATE SUCH THAT G = 0 (TOLERANCE = +1/16", -0)
FOR (D + G) > 3/4", BEVEL PLATE SUCH THAT G = 0 (TOLERANCE = +1/16", -0)
- PJP AND CJP WELDS:
WELD PREPARATIONS NOT SHOWN

1 SINGLE PLATE SHEAR CONNECTION NOTES

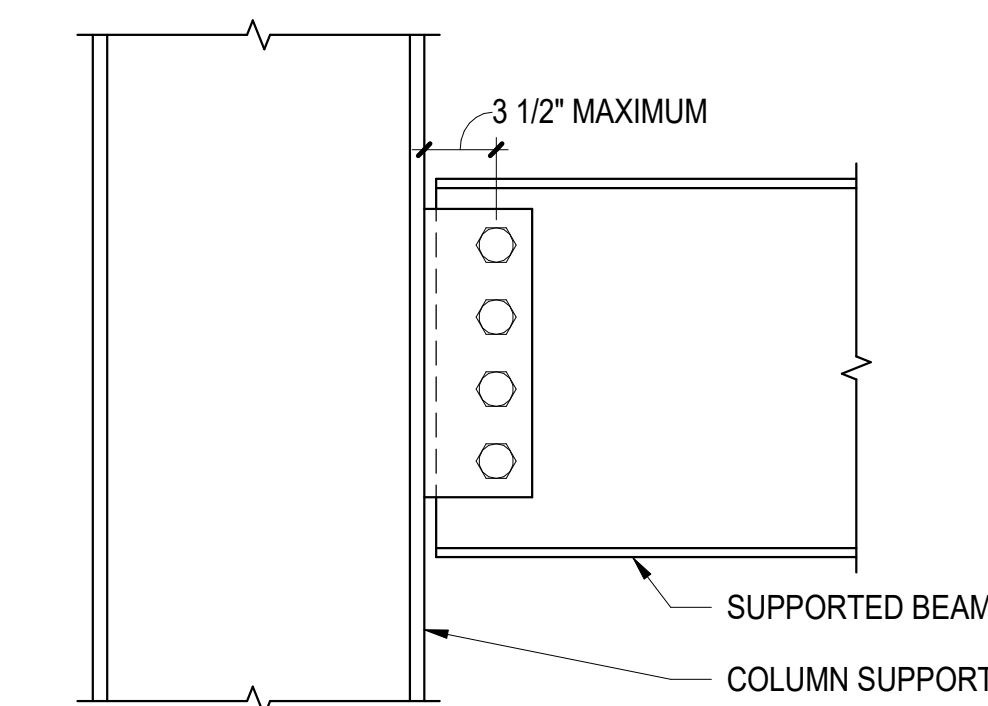
2 TYPICAL SKEWED SINGLE PLATE WELD DETAILS
NOT TO SCALE



A TOP COPE ONLY (TC)



B TOP AND BOTTOM COPE (TBC)
SEE NOTE 3



C BEAM TO COLUMN FLANGE (NO COPE)

NOTES:

- SEE TYPICAL SINGLE PLATE SHEAR CONNECTION GENERAL NOTES FOR ADDITIONAL INFORMATION
- SELECT CONNECTION CAPACITY BASED ON COPED CONDITION OF BEAM
- TBC VALUES IN TABLE ALSO APPLY TO BOTTOM COPE ONLY CONDITION

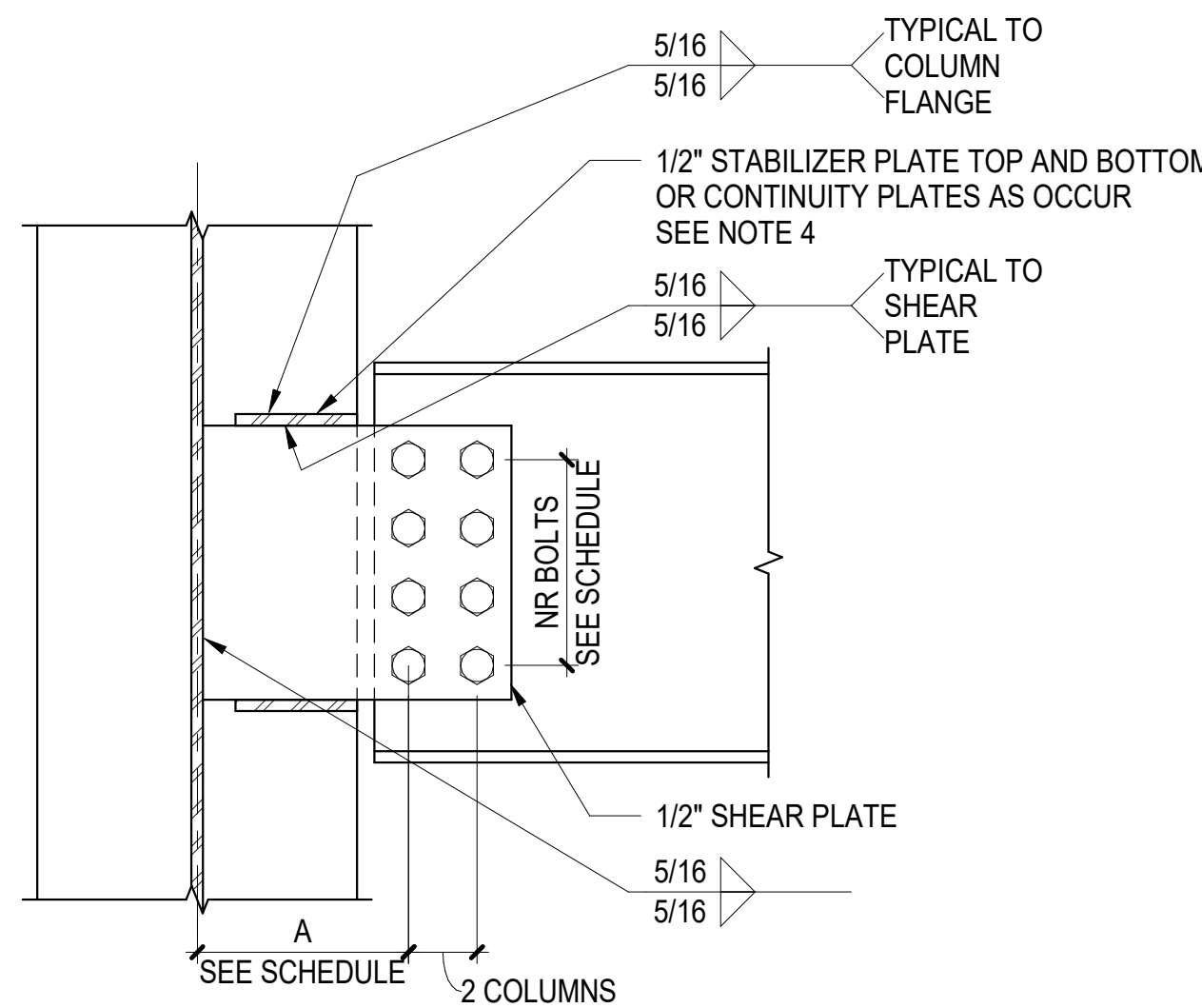
3 TYPICAL SINGLE PLATE SHEAR CONNECTION AT BEAM OR COLUMN FLANGE (TYPE SP1)
NOT TO SCALE

BEAM SIZE		CONNECTION CAPACITY (KIPS)									
		NR BOLTS	NO. COPE	C = 4"				C = 6"			
				TC	TBC	TC	TBC	TC	TBC	TC	TBC
W8	x10	2	23	20	9	14	6	11	4		
	x13-24	2	23	23	13	19	9	14	7		
	x28+	2	23	23	16	23	11	20	9		
W10	x12	2	23	23	11	23	7	19	5		
	x15-26	2	23	23	13	23	9	23	7		
	x30+	2	23	23	17	23	12	23	9		
W12	x14-16	2	23	23	11	23	8	20	6		
		3	42	40	25	28	16	20	11		
	x19-30	2	23	23	13	23	9	23	7		
W14	x34+	3	42	42	30	37	20	28	14		
		2	23	23	17	23	12	23	9		
	x35+	3	42	42	38	42	27	41	20		
W16	x22-30	3	42	42	29	42	19	37	14		
	x34-48	3	42	42	36	42	26	42	19		
	x53+	3	42	42	42	42	33	42	26		
W18	x26-31	3	42	42	32	42	22	42	16		
	x36-40	3	42	42	38	42	27	42	20		
	x45+	4	62	62	62	62	47	62	33		
W21	x35-50	3	42	42	38	42	27	42	20		
		4	62	62	62	62	55	62	42		
	x55+	3	42	42	42	42	35	42	27		
W24 - 4 MIN	x44-63	4	62	62	62	62	56	62	43		
		5	81	81	81	81	81	81	64		
	x68+	6	85	85	85	85	85	85	85		
W27, W30 - 5 MIN		4	62	62	62	62	62	62	53		
		5	81	81	81	81	81	81	81		
		6	85	85	85	85	85	85	85		
W33-W40 - 7 MIN		7	104	104	104	104	104	104	104		
		8	123	123	123	123	123	123	123		
		7	104	104	104	104	104	104	104		
W36-W44		8	123	123	123	123	123	123	123		
		9	142	142	142	142	142	142	142		
		10	161	161	161	161	161	161	161		

NOTES:

- SEE TYPICAL SINGLE PLATE SHEAR CONNECTION GENERAL NOTES FOR ADDITIONAL INFORMATION
- SELECT CONNECTION CAPACITY BASED ON DETAILING DIMENSION "A"
- MINIMUM COLUMN WEB THICKNESS SHALL BE 0.29" (INCLUDES: W8x31+, W10x33+, W12x40+, W14x43+)
- STABILIZER PLATES ONLY REQUIRED FOR SHADED CAPACITY CASES
- SEE TYPICAL DETAIL FOR ADDITIONAL INFORMATION ON SINGLE PLATE CONNECTIONS TO COLUMN WEB WHEN STIFFENERS FROM OTHER CONNECTIONS ARE PRESENT

4 TYPICAL SINGLE PLATE SHEAR CONNECTION AT COLUMN WEB (TYPE SP2)
NOT TO SCALE



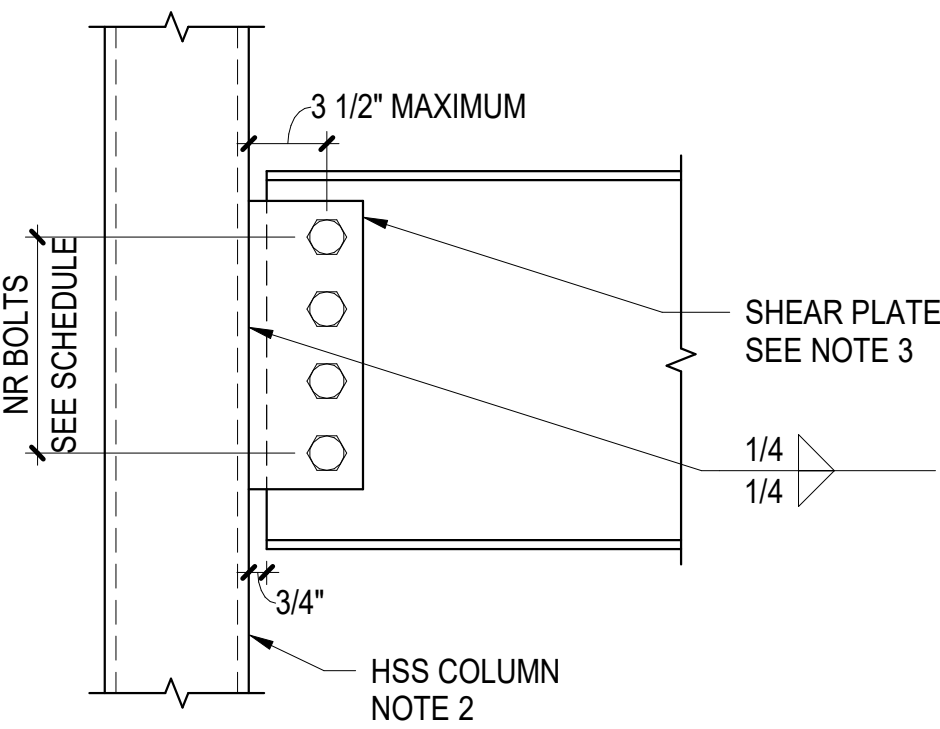
TYPE SP2 SINGLE PLATE SHEAR CONNECTION SCHEDULE: 3/4" DIAMETER ASTM F3125-N BOLTS GRADES A325 OR F1852					
BEAM SIZE	NR BOLTS	CONNECTION CAPACITY (KIPS)			
		A ≤ 6"	A ≤ 8"	A ≤ 10 1/2"	A ≤ 12"
W8 - W12	2	13	10	8	8
W12 - W18	3	30	24	20	18
W16 - W24	4	54	44	36	32
W18 - W30	5	80	66	54	48
W21 - W40	6	110	91	75	68
W27 - W44	7	142	120	99	89
W30 - W44	8	177	151	125	114
W33 - W44	9	214	184	154	140
W36 - W44	10	251	219	186	169

TYPE SP3 SINGLE PLATE SHEAR CONNECTION SCHEDULE: 3/4" DIAMETER ASTM F3125-N BOLTS GRADES A325 OR F1852			
BEAM SIZE	NR BOLTS	CONNECTION CAPACITY (KIPS)	
		HSS WALL THICKNESS ≥ 3/8" SHEAR PLATE THICKNESS = 3/8"	HSS WALL THICKNESS = 1/4" or 5/16" SHEAR PLATE THICKNESS = 1/4"
W8 - W12	2	23	23
W12 - W18	3	42	42
W16 - W24	4	62	62
W18 - W30	5	81	78
W21 - W40	6	85	85
W27 - W44	7	104	104
W30 - W44	8	123	123
W33 - W44	9	142	142
W36 - W44	10	161	161

NOTES:

- SEE TYPICAL SINGLE PLATE SHEAR CONNECTION GENERAL NOTES FOR ADDITIONAL INFORMATION
- DETAIL APPLIES TO SQUARE, RECTANGULAR, OR ROUND HSS COLUMNS
- SINGLE PLATE THICKNESS BASED ON HSS WALL THICKNESS PER SCHEDULE

5 TYPICAL SINGLE PLATE SHEAR CONNECTION AT HSS COLUMN (TYPE SP3)
NOT TO SCALE



777 Old Saw Mill River Road
Tarrytown, NY 10591-6707
T: 914.847.7400
F: 914.847.7991
www.regeneron.com

Building #17
Campus Expansion Child
Day-care Center

777 Old Saw Mill River Road
Mount Pleasant, NY 10591

Project No. B17-DAYCARE

Architect

Gensler

1700 Broadway, Suite 400
New York, NY 10019
(212) 492-1400 Phone
(212) 492-1472 Fax

Structural Engineer

Thornton Tomasetti
120 Broadway, 15th Floor
New York, NY 10271
(917) 661-7800 Phone
(917) 661-7801 Fax

MEP / IT / Security Engineer

Cosentini Associates
498 Seventh Avenue
New York, NY 10018
(212) 615-3600 Phone
(212) 615-3700 Fax

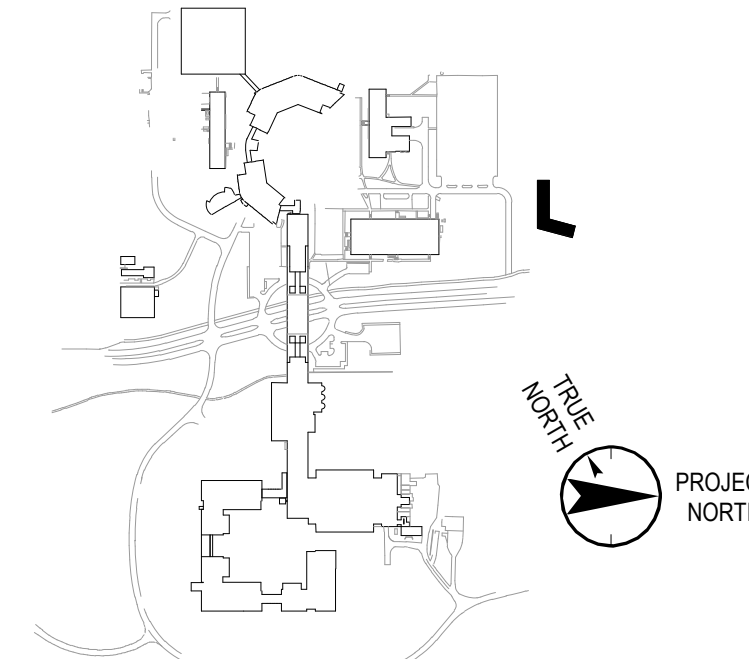
Civil Engineer

JMC
120 Bedford Road
Armonk, NY 10504
(914) 273-5225 Phone
(914) 273-2102 Fax

Landscape Architect

Langan
21 Penn Plaza, 360 West 31st Street, 8th Floor
New York, NY 10001
(212) 479-5400 Phone
(212) 479-5444 Fax

Key Plan



No. Date Description

05.20.2022 ISSUED FOR PERMIT
06.20.2022 100% CONSTRUCTION DOCUMENTS
07.01.2022 100% CONSTRUCTION DOCUMENT - 1

Plot Date: 09/13/18

ALL DRAWINGS AND WRITTEN MATERIALS REPRESENTED ON THIS SHEET CONSTITUTE THE
COPYRIGHTED WORK AND ARE THE SOLE PROPERTY OF REGENERON PHARMACEUTICALS.
THIS SHEET MAY NOT BE REPRODUCED OR COPIED IN WHOLE OR IN PART, NOR MAY ANY
OF THE DRAWINGS BE WRITTEN MATERIALS, OR INFORMATION, BE REPRODUCED OR
ANY OTHER WORK FOR ANY REASON WITHOUT THE WRITTEN CONSENT OF REGENERON
PHARMACEUTICALS. THIS SHEET MUST BE RETURNED UPON THE REQUEST OF
REGENERON PHARMACEUTICALS. IF REGENERON NAMES OR AUTHORIZES REUSE OF ANY
SUCH DOCUMENTS OR INFORMATION, REGENERON SHALL BE SOLELY RESPONSIBLE FOR THE
PROJECT WITHOUT THE EXPRESS WRITTEN CONSENT OF REGENERON PHARMACEUTICALS.
REGENERON ASSUMES FULL RESPONSIBILITY FOR ANY AND ALL RISKS INVOLVED IN SUCH
REUSE.

Professional Seal and Signature

Vendor Name: GENSLER
Vendor Project No.: 006.3608.000
Discipline: Drawn By: TLL
TYPICAL STEEL BEAM SHEAR
CONNECTIONS 3/4"
DIAMETER BOLTS

Scale: As indicated Floor:

S-510