

777 Old Saw Mill River Road  
Tarrytown, NY 10591-6707  
T: 914.847.7400  
F: 914.847.7991  
www.regeneron.com

Building #17  
Campus Expansion Child  
Day-care Center

777 Old Saw Mill River Road  
Mount Pleasant, NY 10591

Project No. B17-DAYCARE

Architect

**Gensler**  
1700 Broadway, Suite 400  
New York, NY 10019  
(212) 492-1400 Phone  
(212) 492-1472 Fax

Structural Engineer

Thornton Tomasetti  
120 Broadway, 15th Floor  
New York, NY 10271  
(917) 661-7800 Phone  
(917) 661-7801 Fax

MEP / IT / Security Engineer

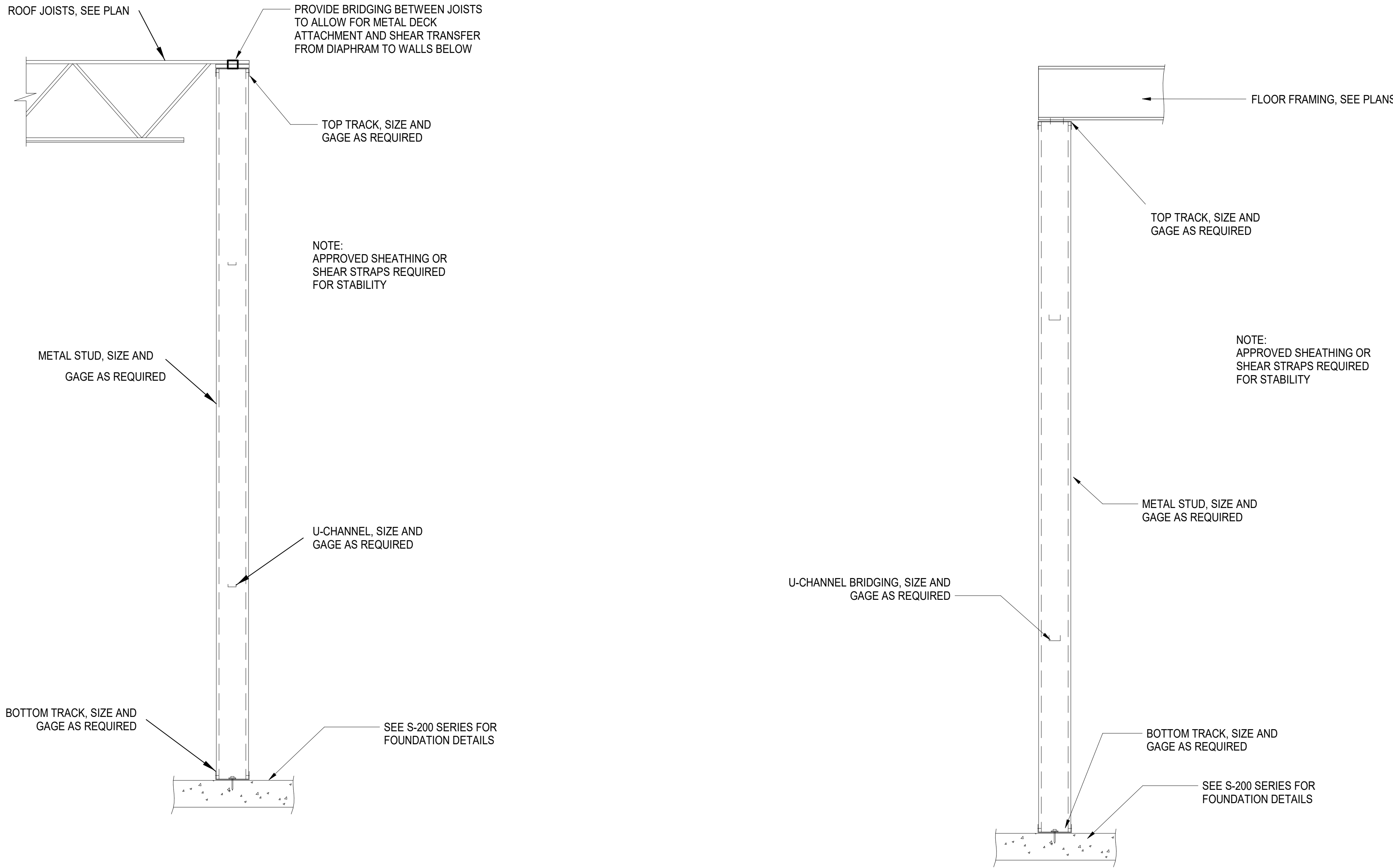
Cosentini Associates  
498 Seventh Avenue  
New York, NY 10018  
(212) 615-3600 Phone  
(212) 615-3700 Fax

Civil Engineer

JMC  
120 Bedford Road  
Armonk, NY 10504  
(914) 273-5225 Phone  
(914) 273-2102 Fax

Landscape Architect

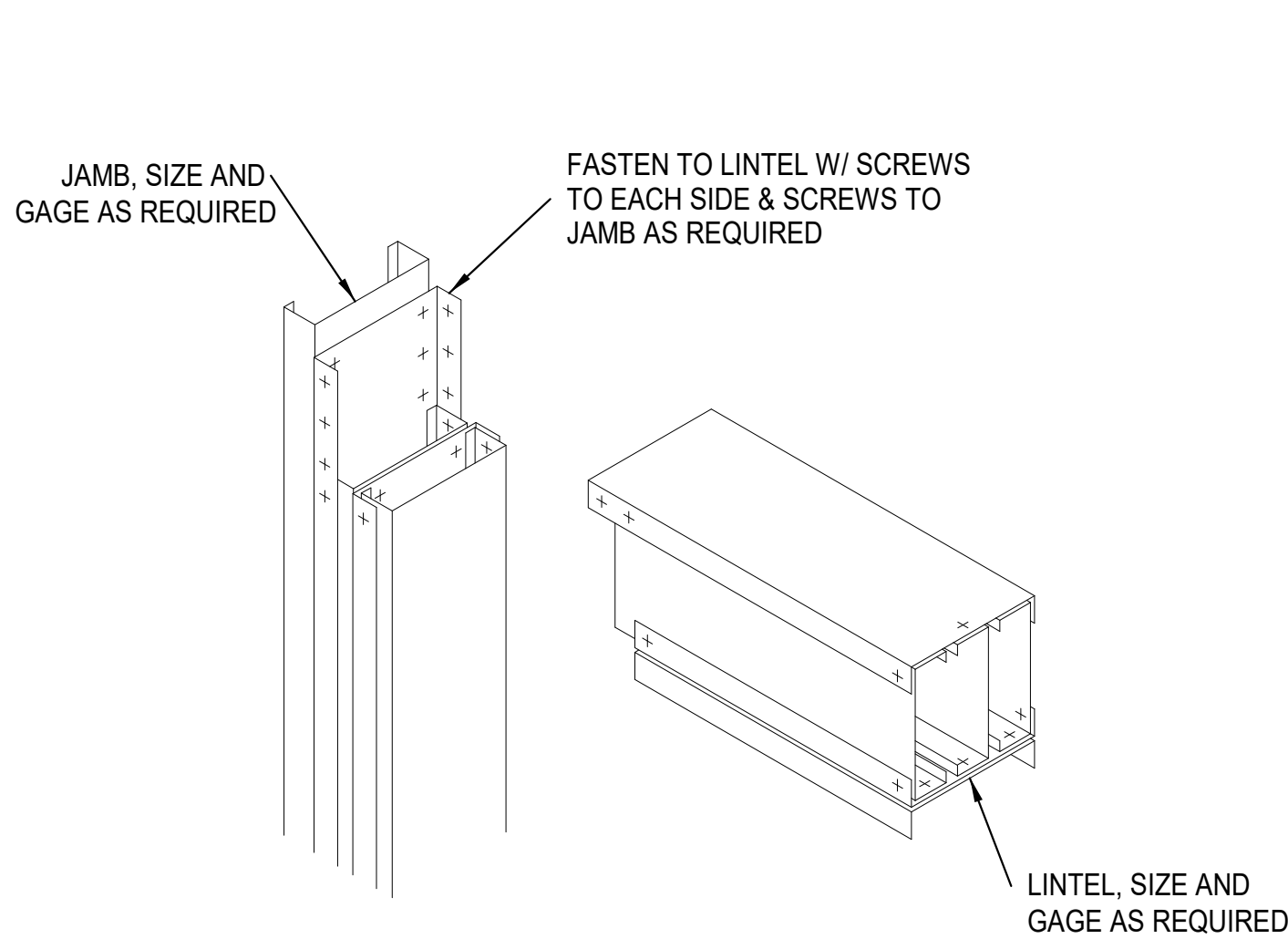
Langan  
21 Penn Plaza, 360 West 31st Street, 8th Floor  
New York, NY 10001  
(212) 479-5400 Phone  
(212) 479-5444 Fax



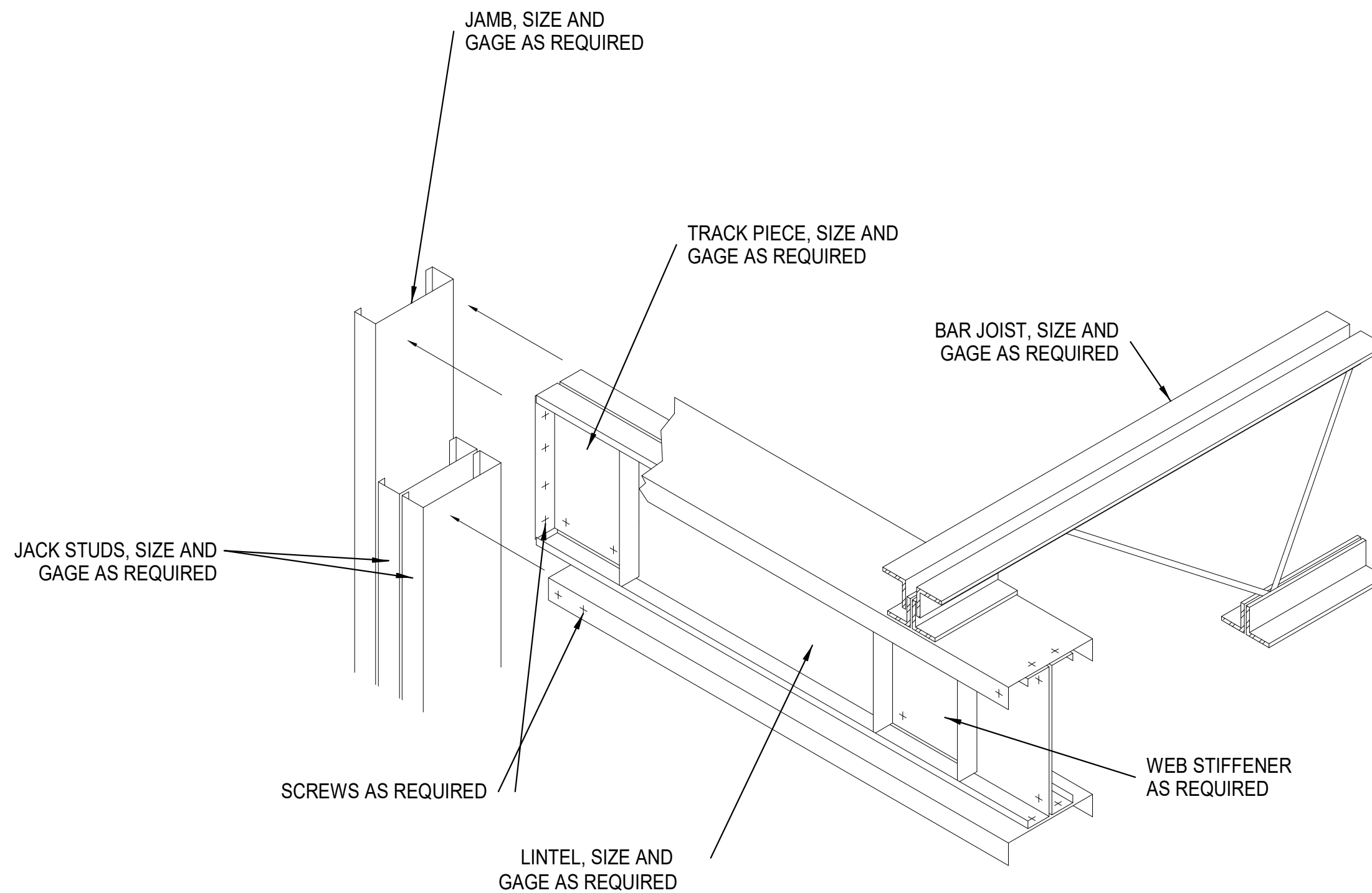
1 LOAD BEARING WALL WITH JOIST  
SCALE: 1 1/2" = 1'-0"

2 LOAD BEARING WALL WITH W-SHAPE  
SCALE: 1 1/2" = 1'-0"

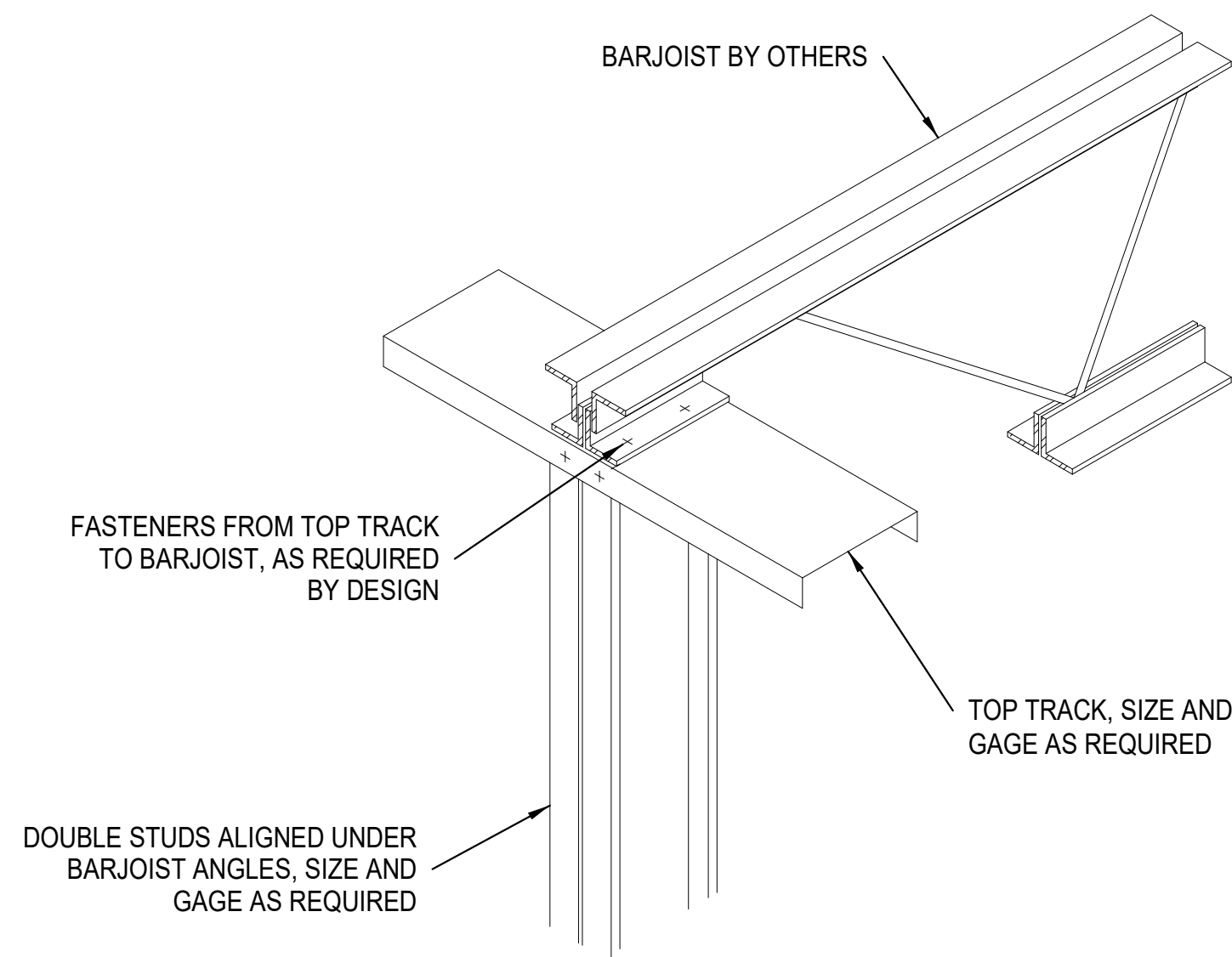
3 TYPICAL LOAD BEARING WINDOW OPENING  
ELEVATION  
SCALE: 1" = 1'-0"



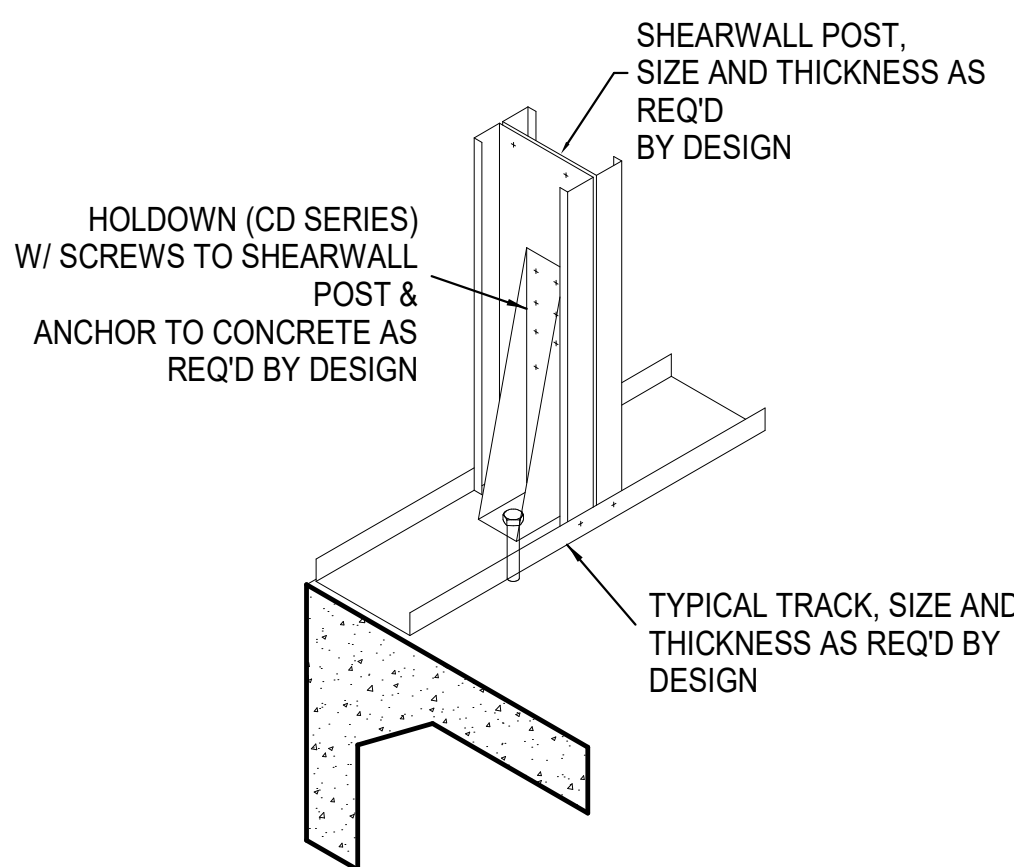
4 TYPICAL LOAD BEARING BOX HEADER LINTEL  
SCALE: 1" = 1'-0"



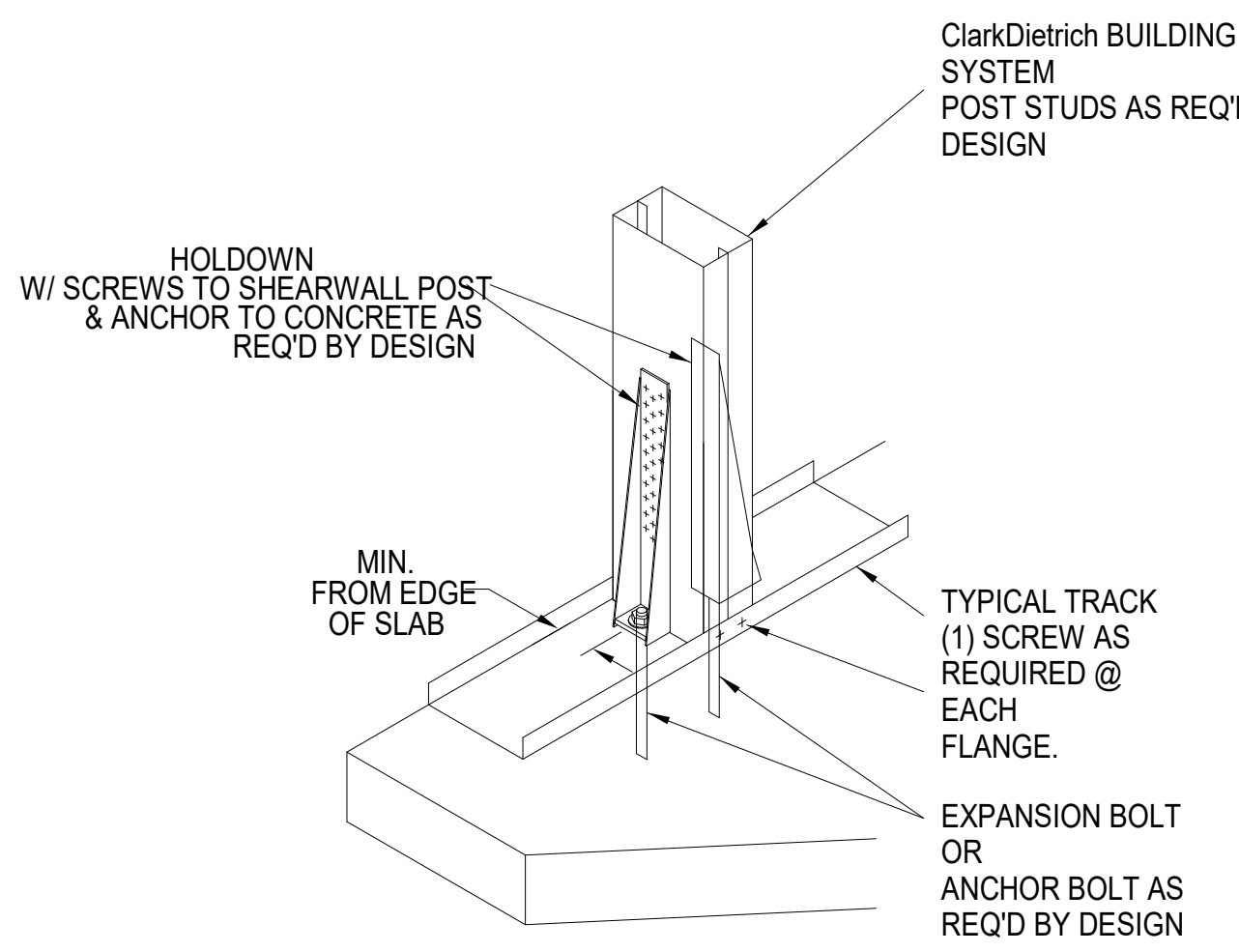
5 TYPICAL LOAD BEARING LINTEL AT BAR JOIST  
SCALE: 1" = 1'-0"



6 LOAD BEARING POST AT BAR JOIST  
SCALE: 1" = 1'-0"

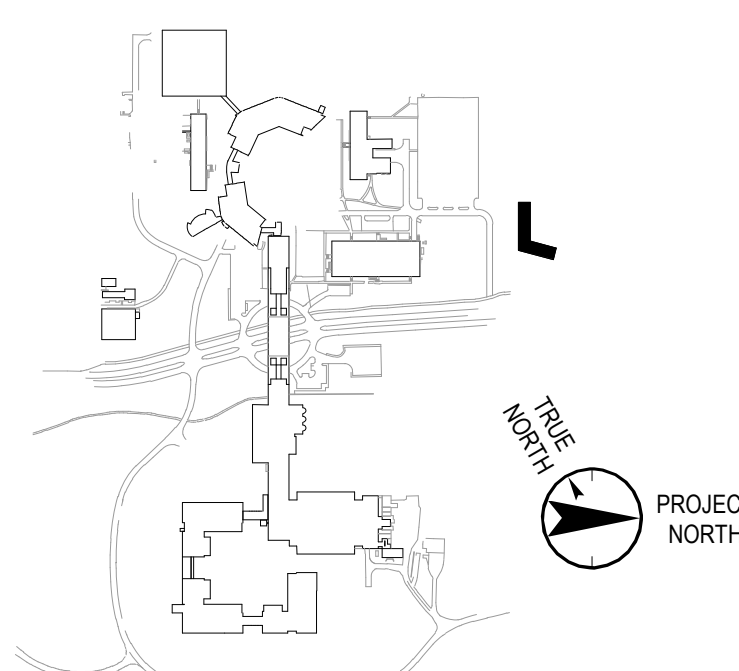


7 TYP. HOLD DOWN DETAIL I  
SCALE: 3/4" = 1'-0"



8 TYP. HOLD DOWN DETAIL II  
SCALE: 3/4" = 1'-0"

Key Plan



No.	Date	Description
	05.20.2022	ISSUED FOR PERMIT
	06.20.2022	100% CONSTRUCTION DOCUMENTS
	07.01.2022	100% CONSTRUCTION DOCUMENT-1

Plot Date: 03/08/22

ALL DRAWINGS AND WRITTEN MATERIALS REPRESENTED ON THIS SHEET CONSTITUTE THE COPYRIGHTED WORK AND ARE THE SOLE PROPERTY OF REGENERON PHARMACEUTICALS. THIS SHEET MAY NOT BE REPRODUCED OR COPIED IN WHOLE OR IN PART, NOR MAY ANY OF THE DRAWINGS OR WRITTEN MATERIALS BE REPRODUCED OR COPIED IN WHOLE OR IN PART WITHOUT THE WRITTEN CONSENT OF REGENERON PHARMACEUTICALS. REGENERON PHARMACEUTICALS, IF REGENERON NAMES OR AUTHORIZES REUSE OF ANY SUCH DOCUMENTS OR INFORMATION PRODUCED BY A DESIGN PROFESSIONAL, OUTSIDE OF THE PROJECT WITHOUT THE EXPRESS WRITTEN CONSENT OF DESIGN PROFESSIONAL, REGENERON ASSUMES FULL RESPONSIBILITY FOR ANY AND ALL RISKS INVOLVED IN SUCH REUSE.

Professional Seal and Signature

Vendor Name: GENSLER  
Vendor Project No.: 006.3608.000  
Discipline: LGMF BEARING WALL  
DETAILS  
Drawn By: Author

Scale: As indicated Floor:

S-600