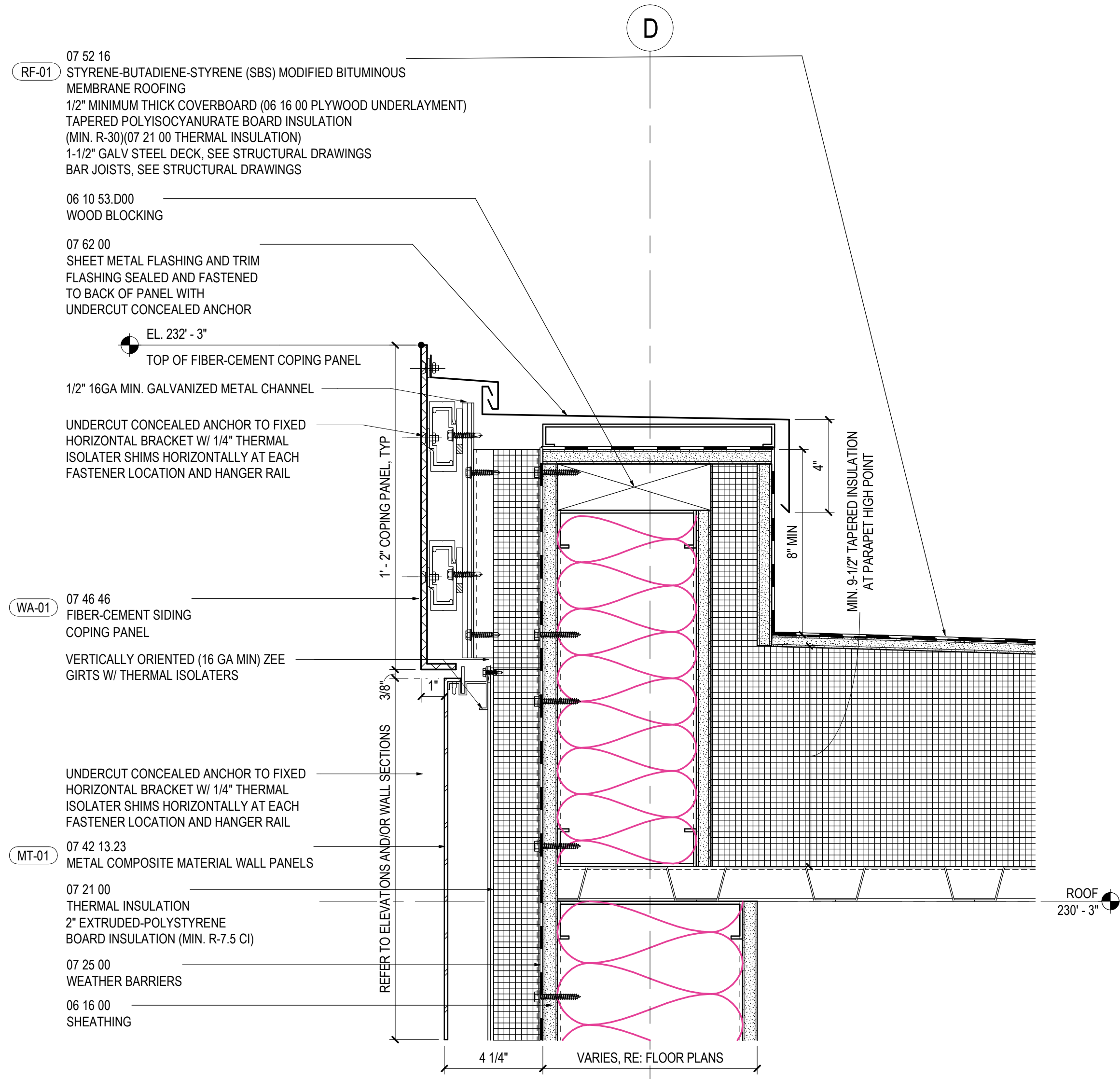
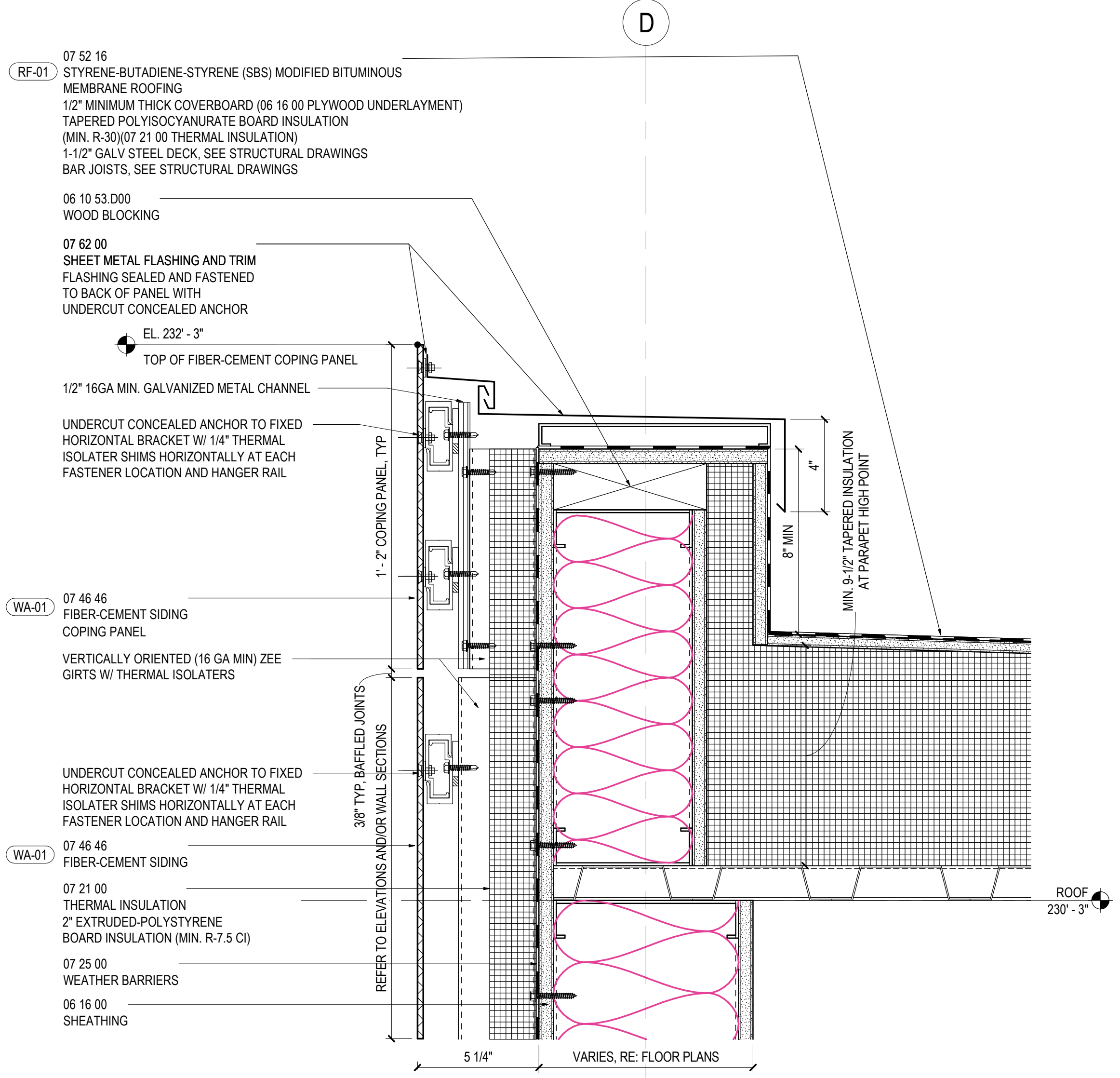


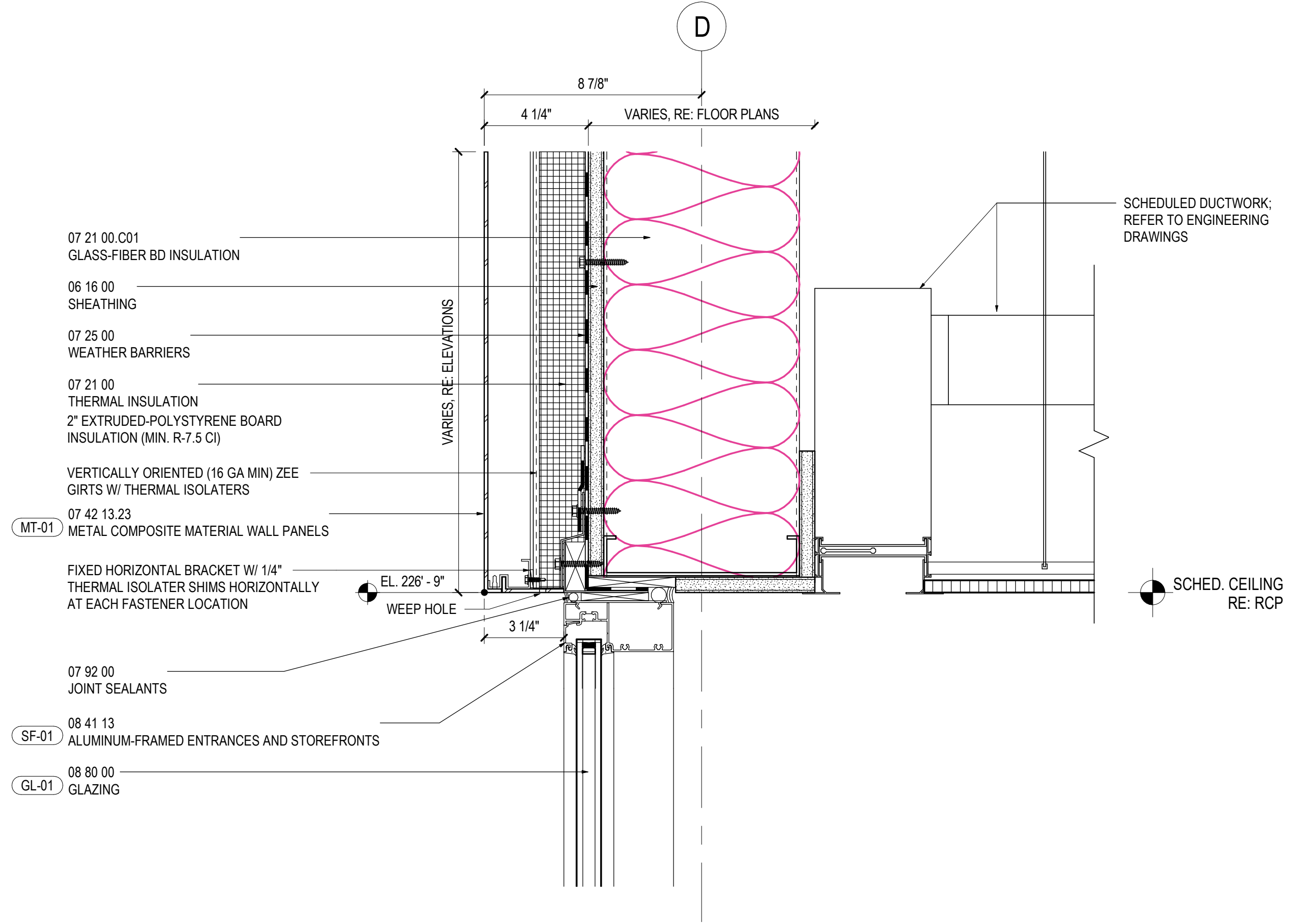
06 TYP ROOF DRAIN AND VENT STACK - NORTH WING
SCALE: 1/16" = 1'-0"



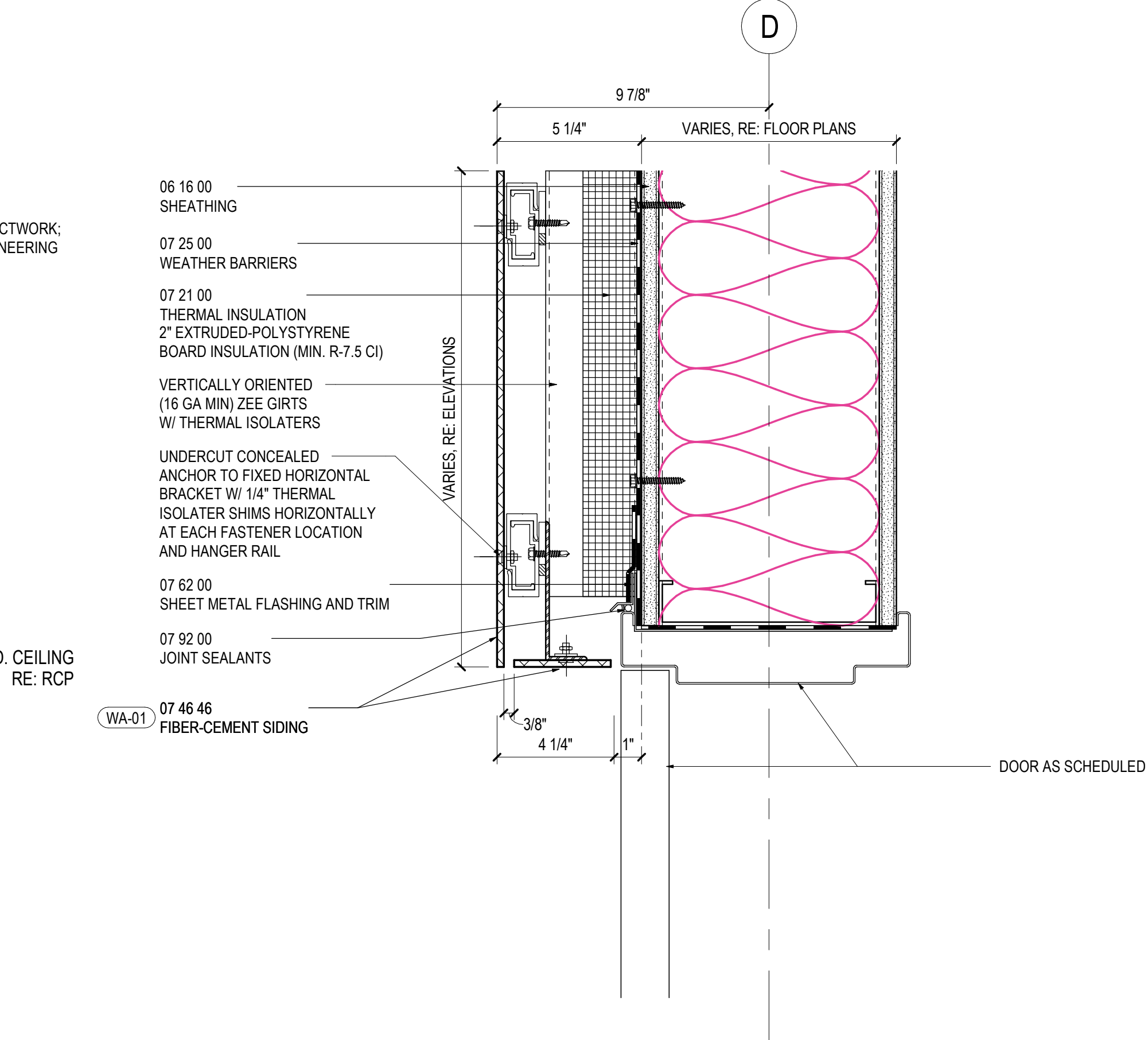
04 TYP PARAPET AT METAL PANEL SPANDREL - NORTH WING
SCALE: 3/8" = 1'-0"



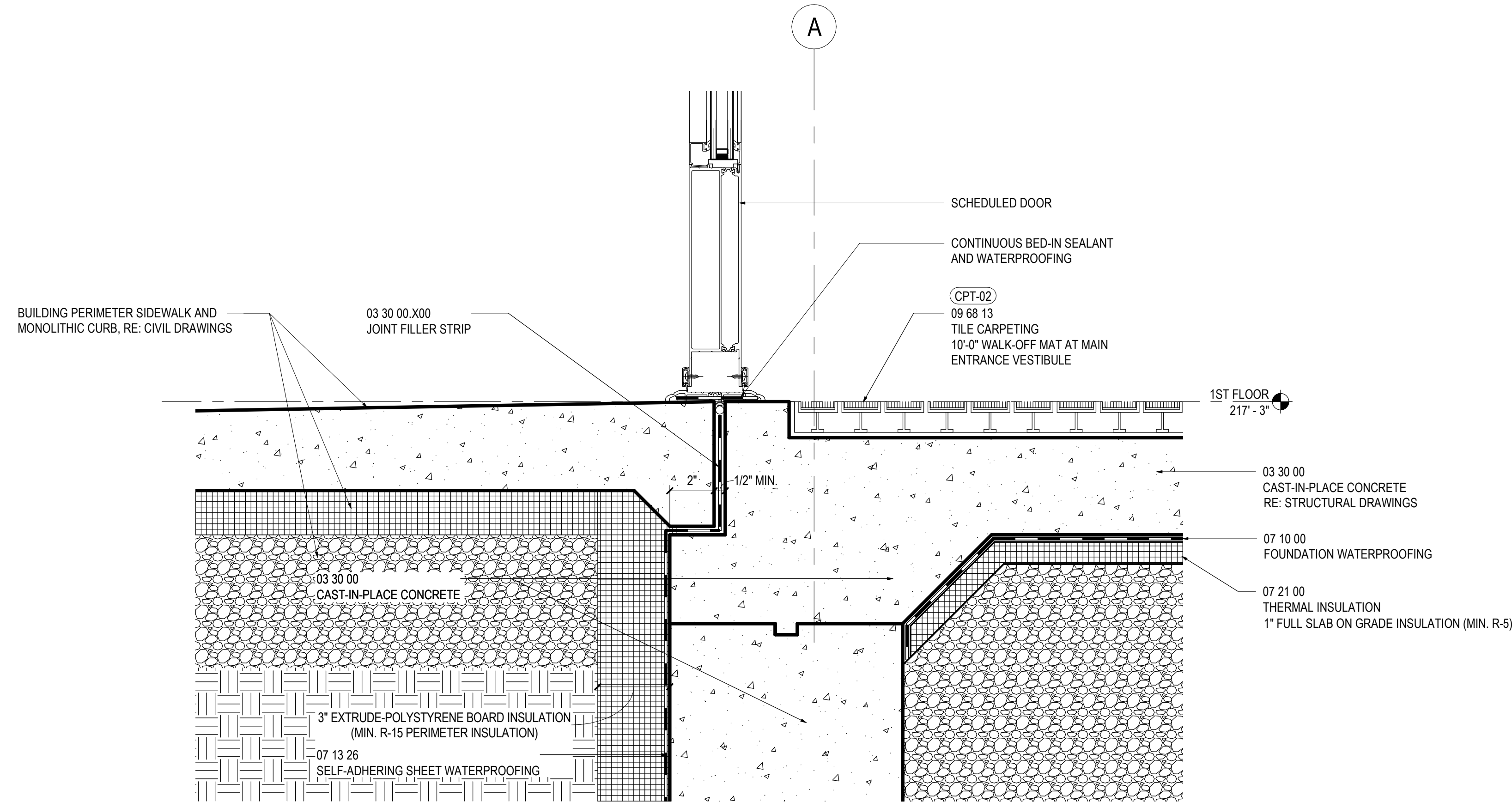
01 TYP PARAPET - NORTH WING
SCALE: 3/8" = 1'-0"



05 METAL PANEL SPANDREL AT STOREFRONT HEADER - NORTH WING
SCALE: 3/8" = 1'-0"



02 FIBER CEMENT SIDING AT DOOR HEADER - NORTH WING
SCALE: 3/8" = 1'-0"



03 TYPICAL STOREFRONT ENTRANCE SILL
SCALE: 3/8" = 1'-0"

777 Old Saw Mill River Road
Tarrytown, NY 10591-6707
T: 914.847.7400
F: 914.847.7991
www.regeneron.com

Building #17
Campus Expansion Child
Day-care Center

899 Old Saw Mill River Road
Mount Pleasant, NY 10591

Project No. B17-DAYCARE

Architect
Gensler

1700 Broadway, Suite 400
New York, NY 10019
(212) 492-1400 Phone
(212) 492-1472 Fax

Structural Engineer

Thornton Tomasetti
120 Broadway, 15th Floor
New York, NY 10019
(917) 661-7800 Phone
(917) 661-7801 Fax

MEP / IT / Security Engineer

Cosentini Associates
498 Seventh Avenue
New York, NY 10018
(212) 615-3600 Phone
(212) 615-3700 Fax

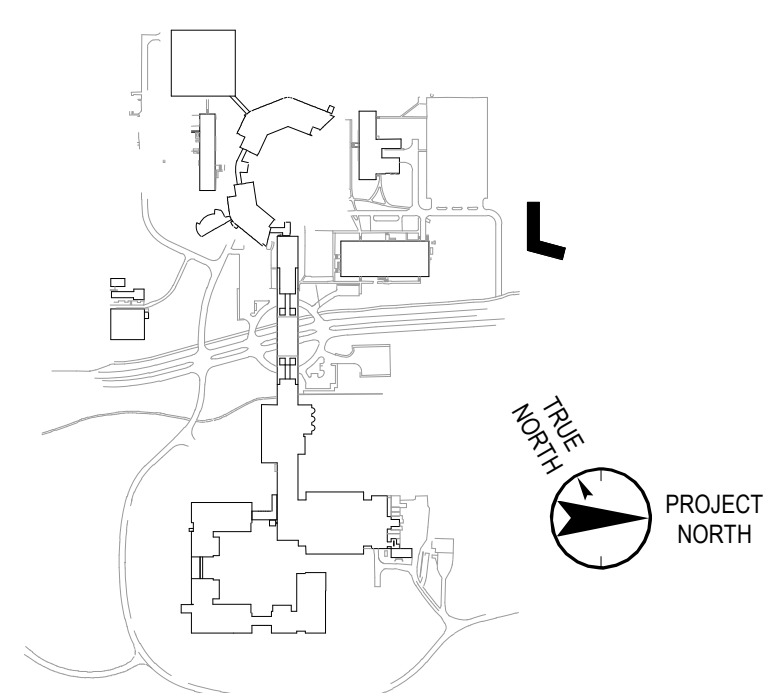
Civil Engineer

JMC
120 Bedford Road
Armonk, NY 10504
(914) 273-5225 Phone
(914) 273-2102 Fax

Landscape Architect

Langan
21 Penn Plaza, 360 West 31st Street, 8th Floor
New York, NY 10001
(212) 479-5400 Phone
(212) 479-5444 Fax

Key Plan



No.	Date	Description
0	05.20.2022	ISSUED FOR PERMIT
1	06.20.2022	100% CONSTRUCTION DOCUMENTS
2	07.01.2022	100% CONSTRUCTION DOCUMENTS-1

Plot Date: 07.01.2022

ALL DRAWINGS AND WRITTEN MATERIALS REPRESENTED ON THIS SHEET CONSTITUTE THE COPYRIGHTED WORK AND ARE THE SOLE PROPERTY OF REGENERON PHARMACEUTICALS. THIS SHEET MAY NOT BE REPRODUCED OR COPIED IN WHOLE OR IN PART, NOR MAY ANY OF THE DRAWINGS OR WRITTEN MATERIALS BE REPRODUCED OR COPIED IN WHOLE OR IN PART WITHOUT THE WRITTEN CONSENT OF REGENERON PHARMACEUTICALS. THIS SHEET MUST BE RETURNED TO THE ARCHITECT UPON THE COMPLETION OF THE PROJECT WITHOUT THE EXPRESS WRITTEN CONSENT OF THE ARCHITECT. REGENERON PHARMACEUTICALS ASSUMES FULL RESPONSIBILITY FOR ANY AND ALL RISKS INVOLVED IN SUCH REUSE.

Professional Seal and Signature

Vendor Name: GENSLER
Vendor Project No.: 006.3608.000
Discipline: ARCHITECTURE Drawn By: GENSLER
EXTERIOR WALL DETAILS -
NORTH WING

Scale: As indicated Floor:

A-360