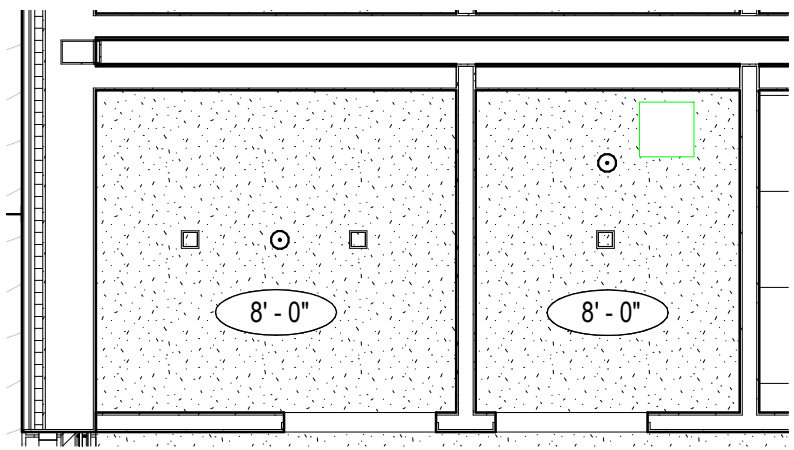
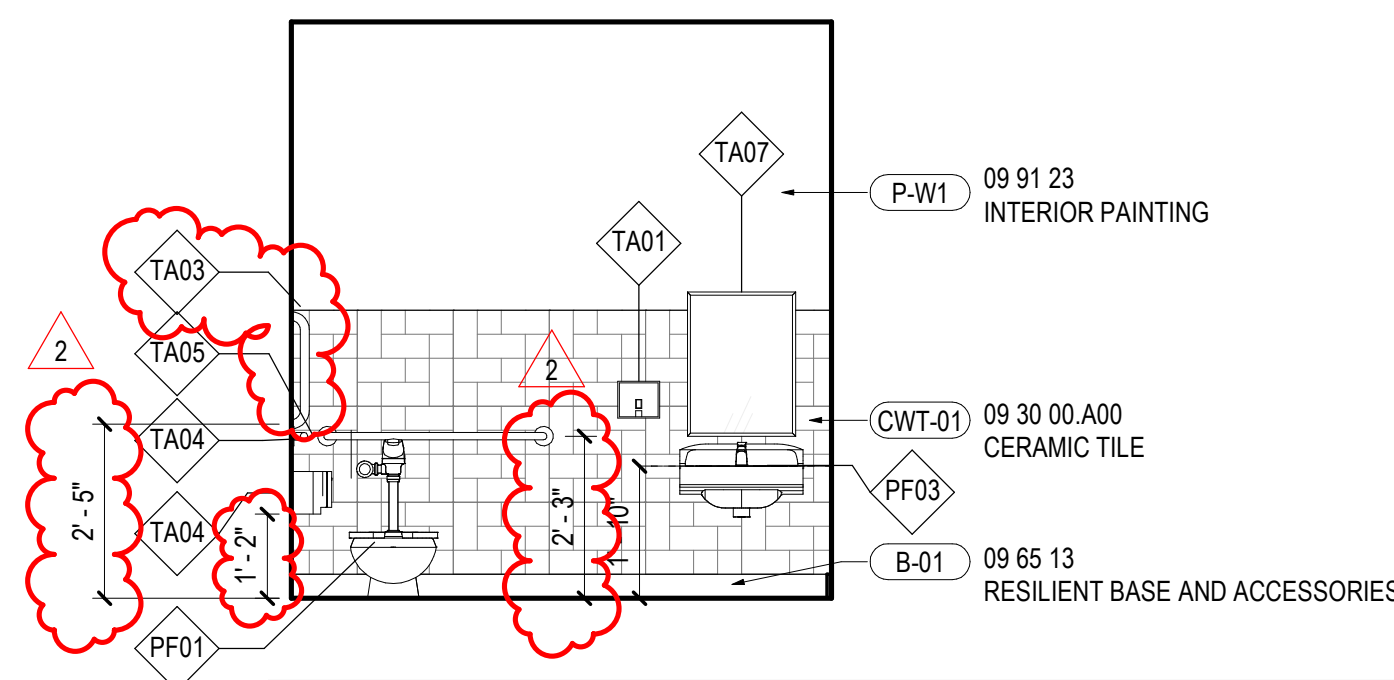


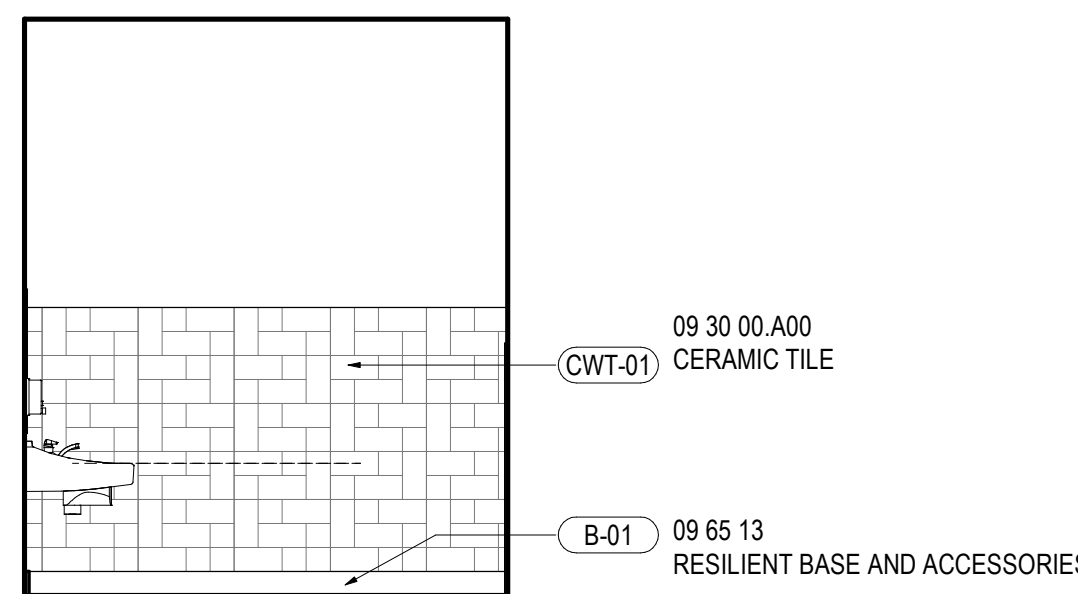
15 ENLARGED PLAN - K-PREP/PRESCHOOL BATHROOM
SCALE: 1/4" = 1'-0"



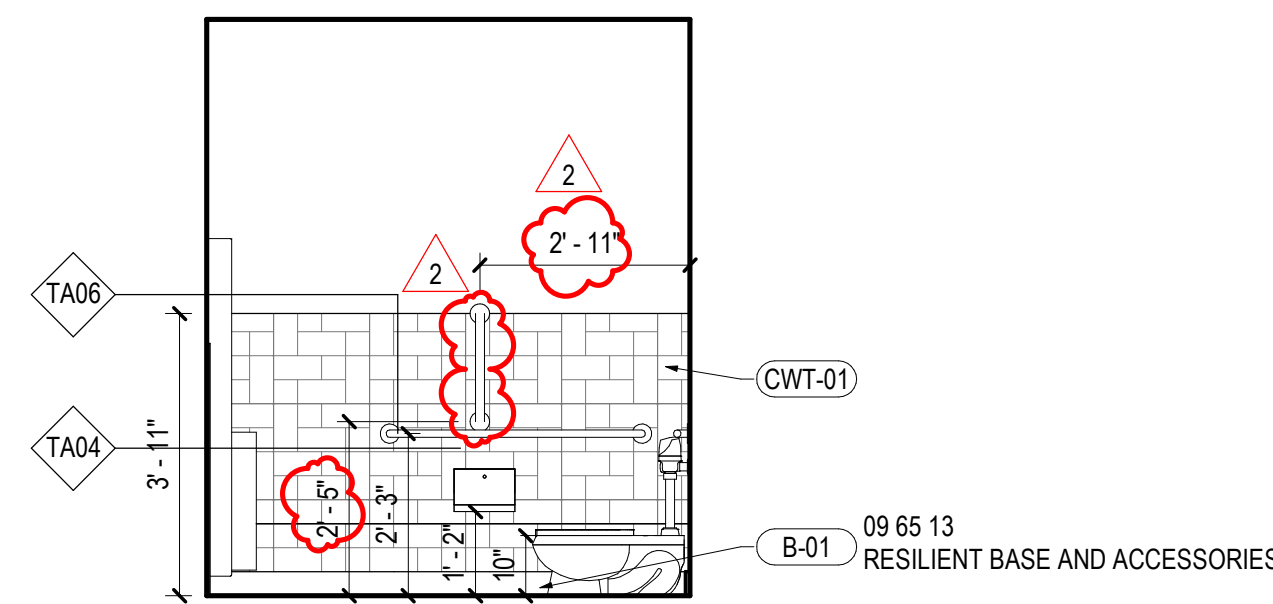
16 RCP - K-PREP/PRESCHOOL BATHROOMS
SCALE: 1/4" = 1'-0"



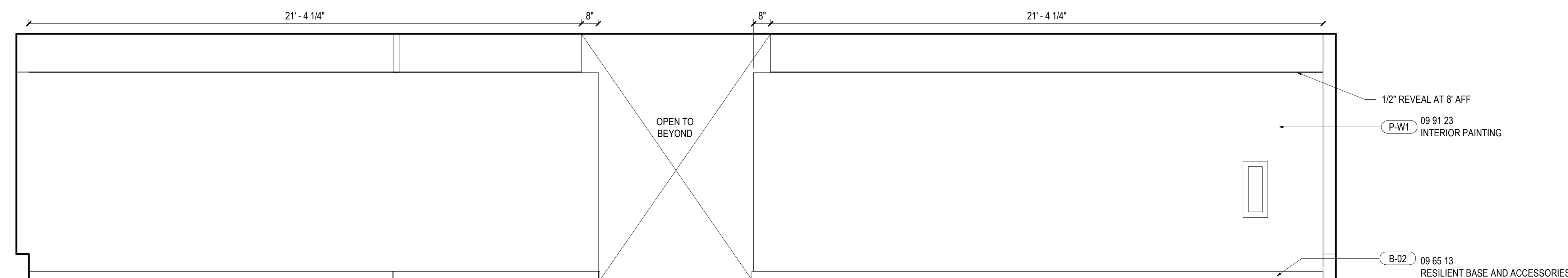
17 ELEVATION - K-PREP/PRESCHOOL BATHROOM A
SCALE: 3/8" = 1'-0"



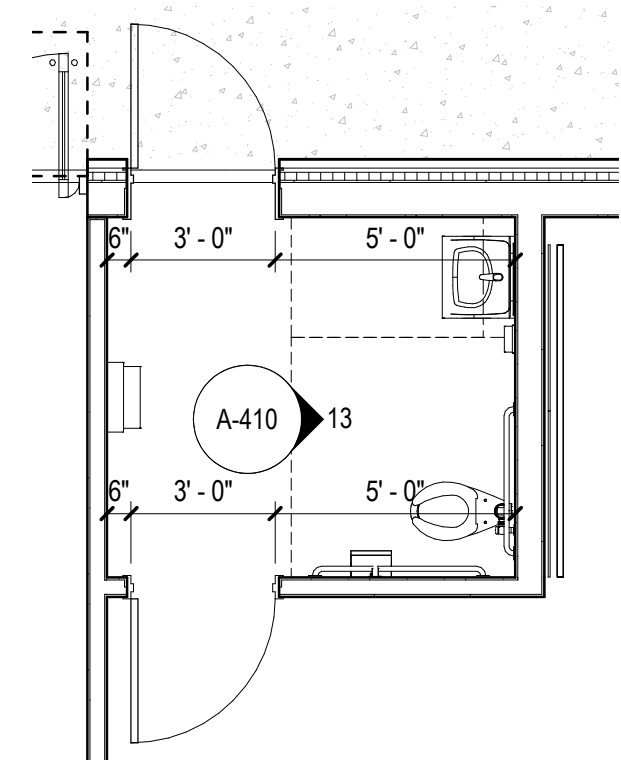
18 ELEVATION - K-PREP/PRESCHOOL BATHROOM B
SCALE: 3/8" = 1'-0"



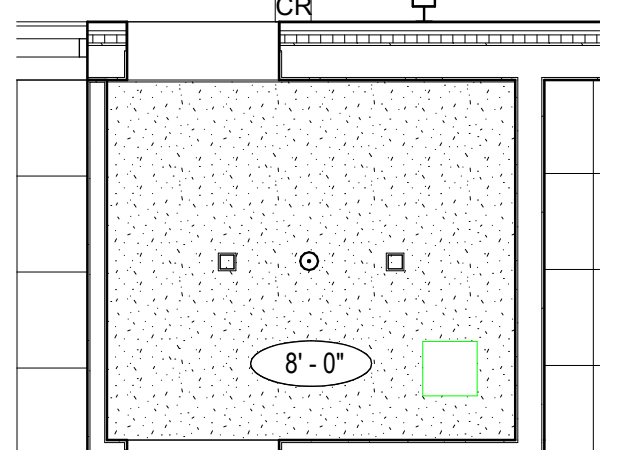
19 ELEVATION - K-PREP/PRESCHOOL BATHROOM C
SCALE: 3/8" = 1'-0"



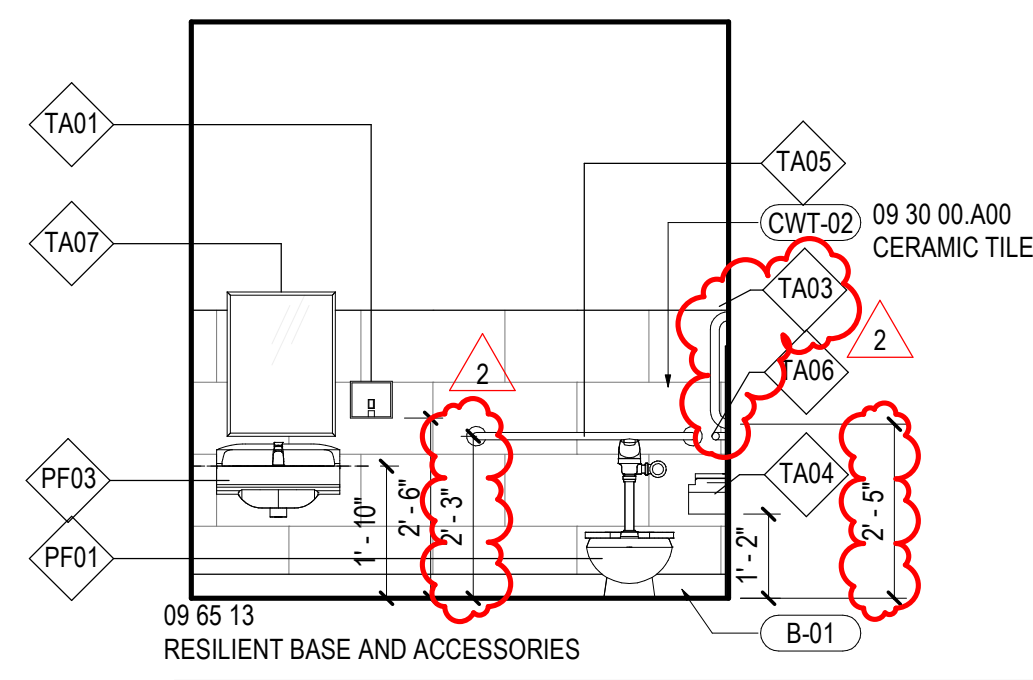
20 ELEVATION - INFANT/TODDLER CORRIDOR EAST
SCALE: 3/8" = 1'-0"



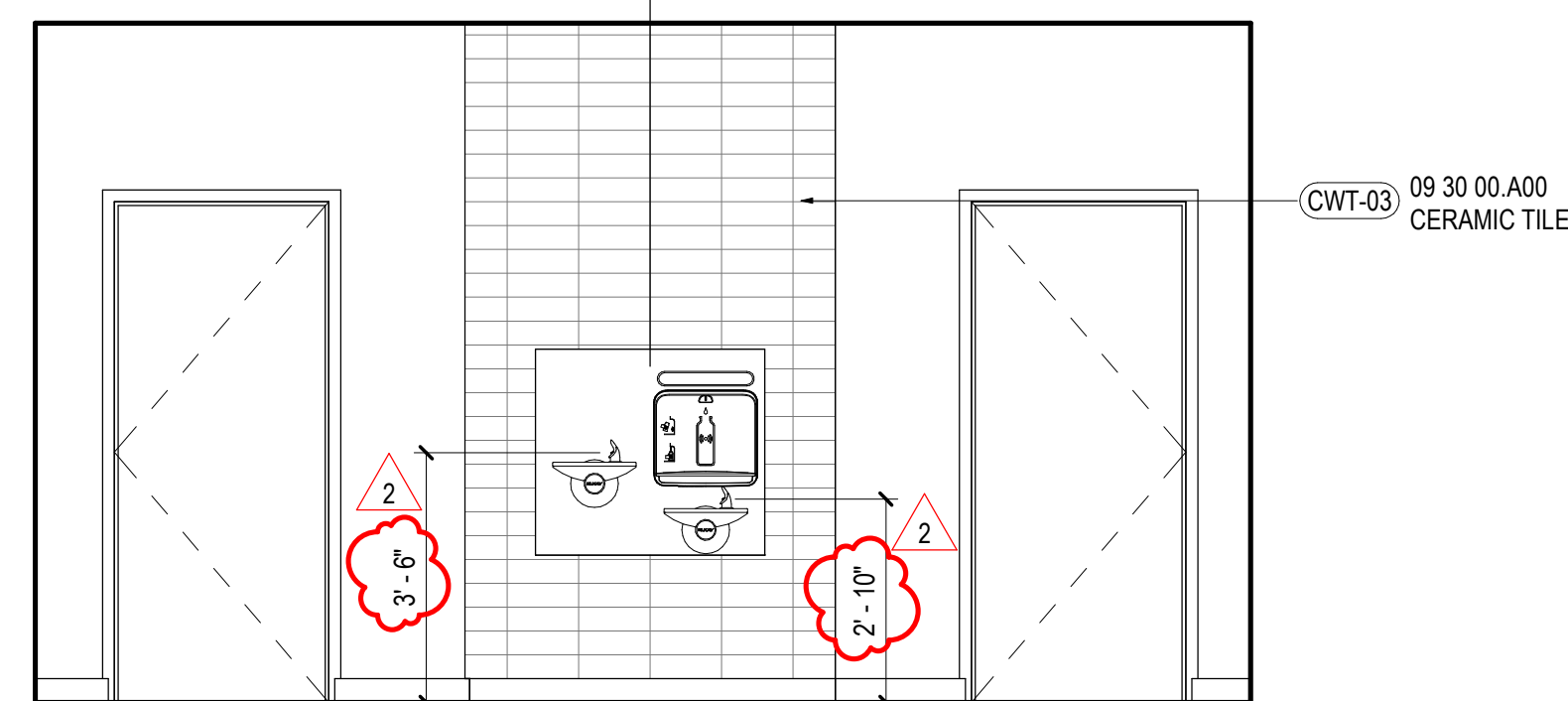
11 ENLARGED PLAN - MOVEMENT ROOM BATHROOM
SCALE: 1/4" = 1'-0"



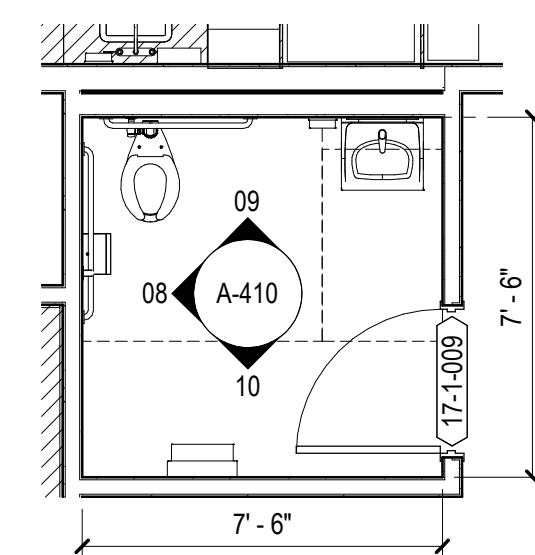
12 RCP - MOVEMENT ROOM BATHROOM
SCALE: 1/4" = 1'-0"



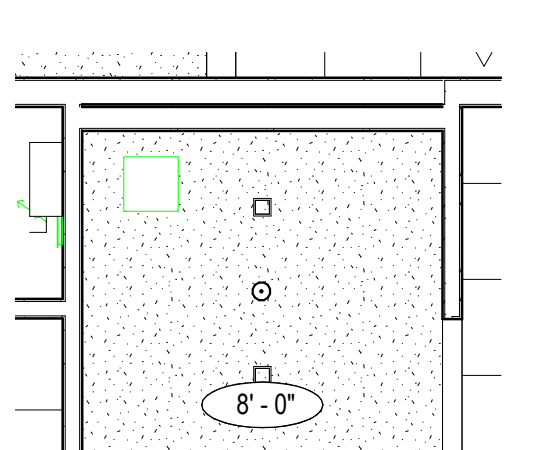
13 ELEVATION - MOVEMENT ROOM BATHROOM A
SCALE: 3/8" = 1'-0"



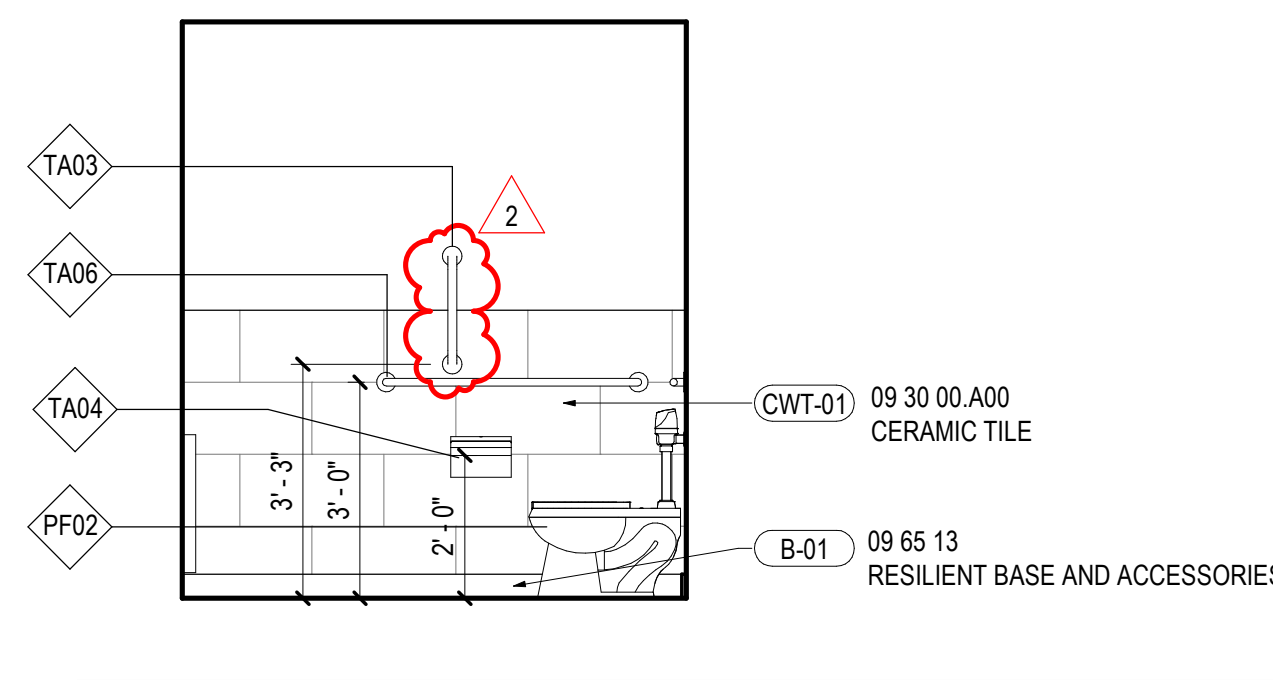
14 ELEVATION - DRINKING FOUNTAIN
SCALE: 3/8" = 1'-0"



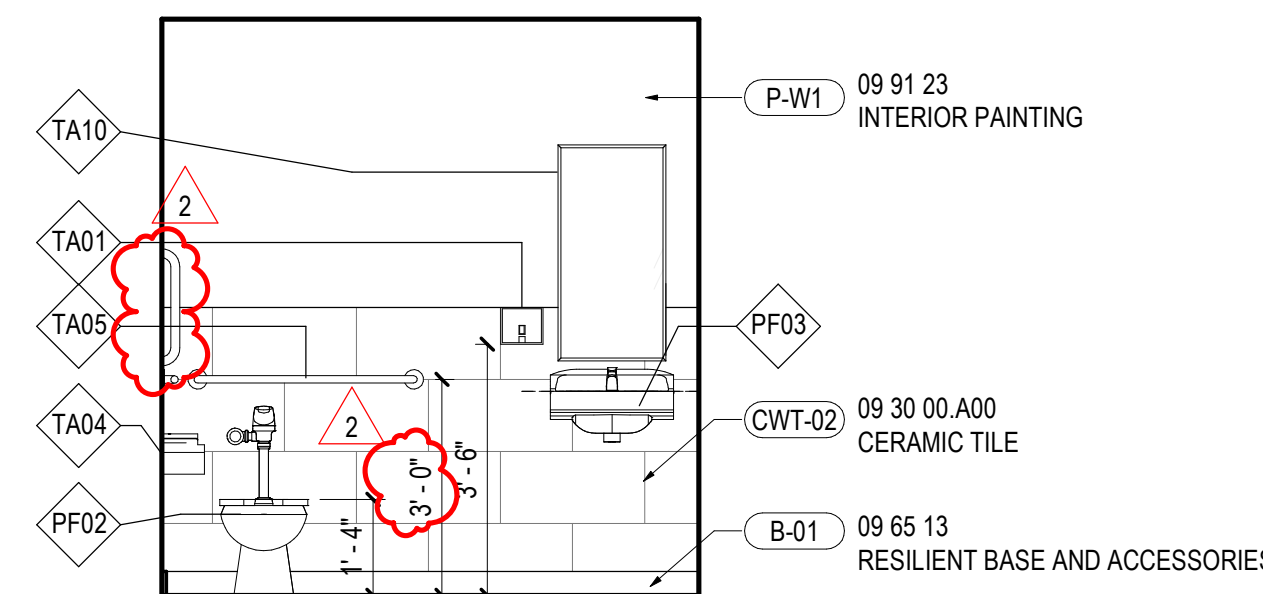
06 ENLARGED PLAN - STAFF BATHROOM
SCALE: 1/4" = 1'-0"



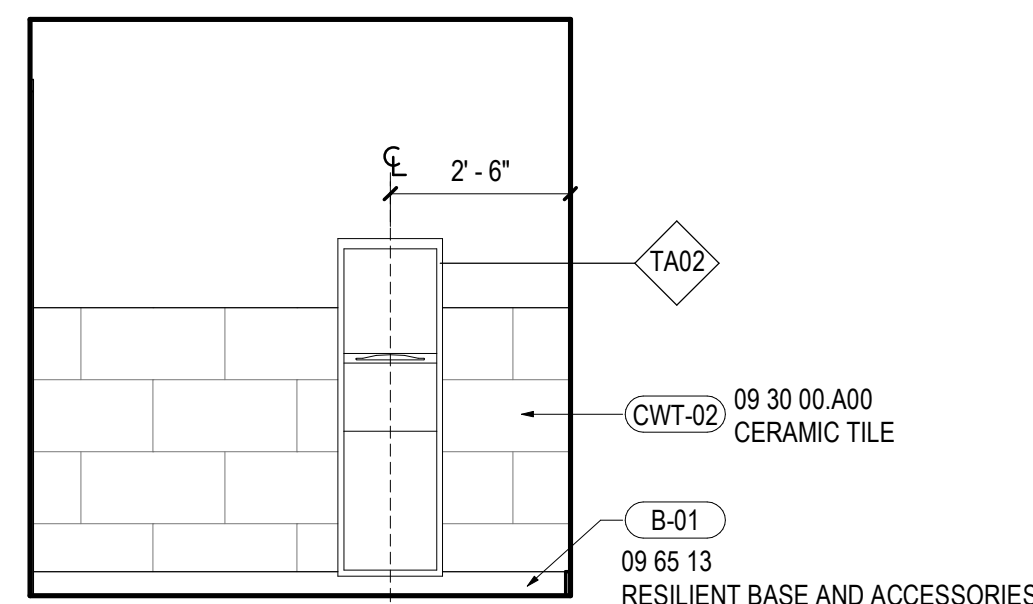
07 RCP - STAFF BATHROOM
SCALE: 1/4" = 1'-0"



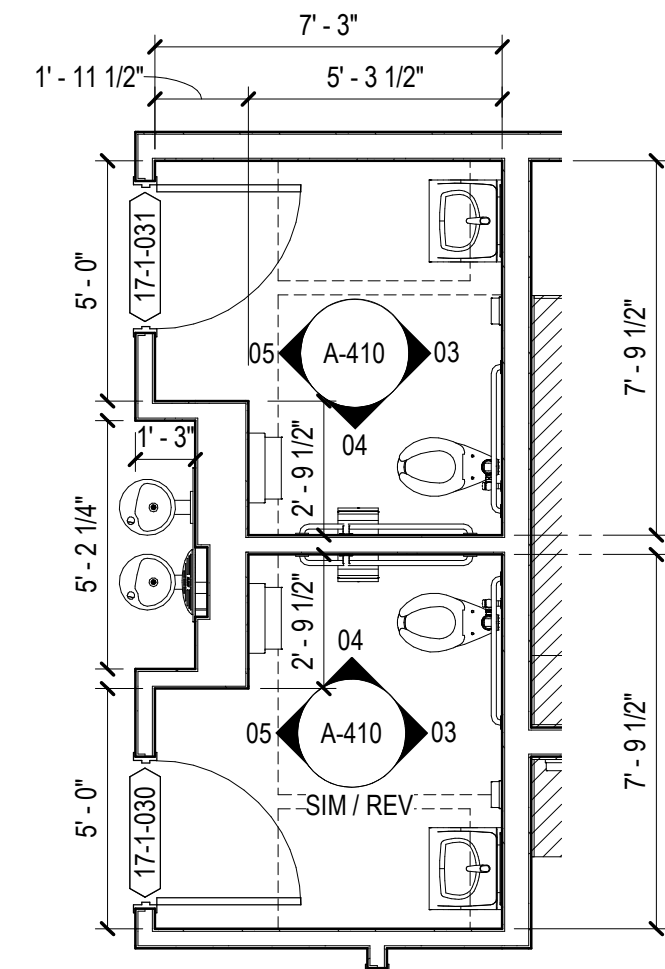
08 ELEVATION - STAFF BATHROOM A
SCALE: 3/8" = 1'-0"



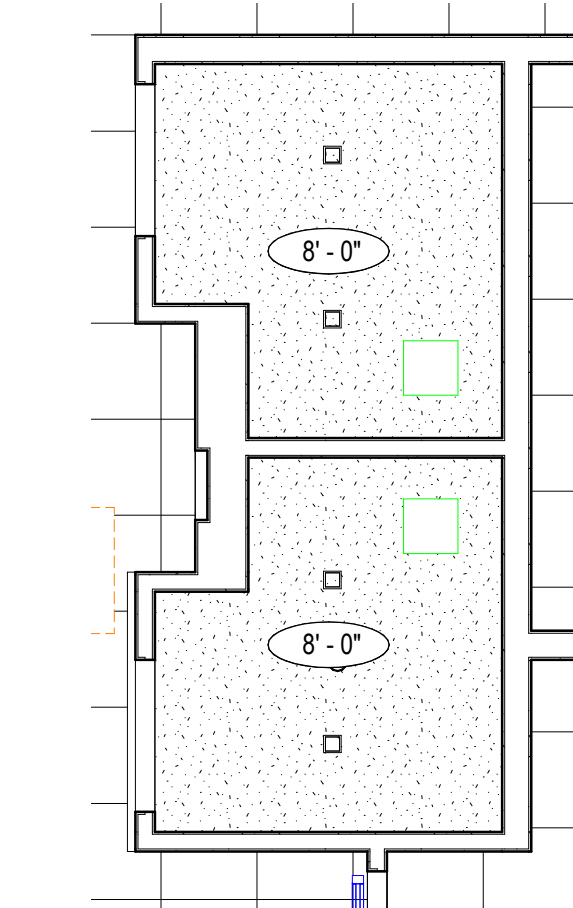
09 ELEVATION - STAFF BATHROOM B
SCALE: 3/8" = 1'-0"



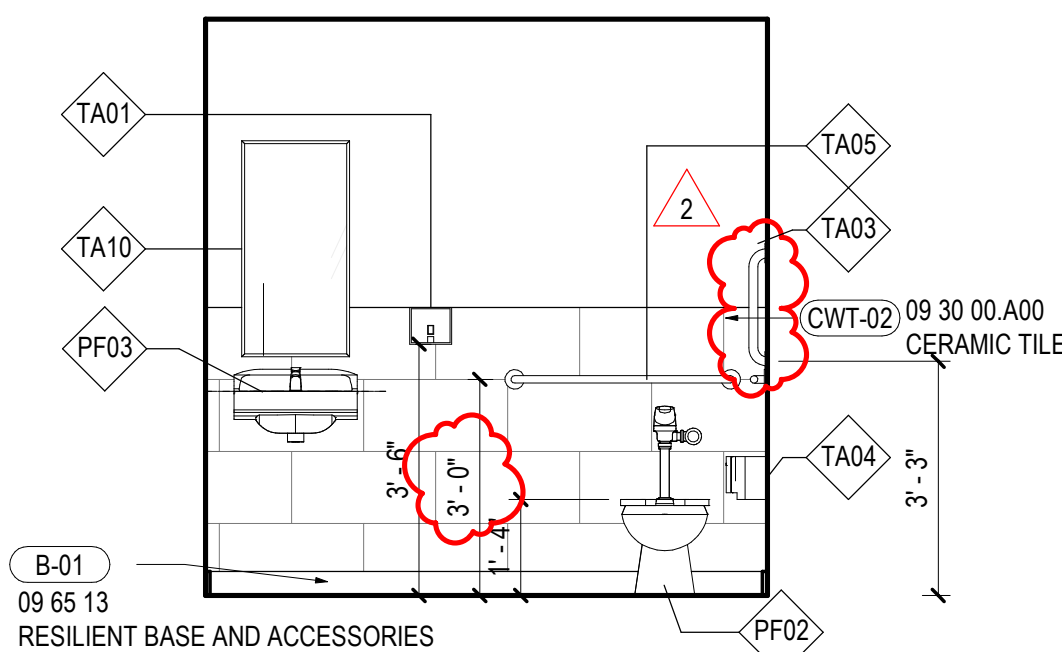
10 ELEVATION - STAFF BATHROOM C
SCALE: 3/8" = 1'-0"



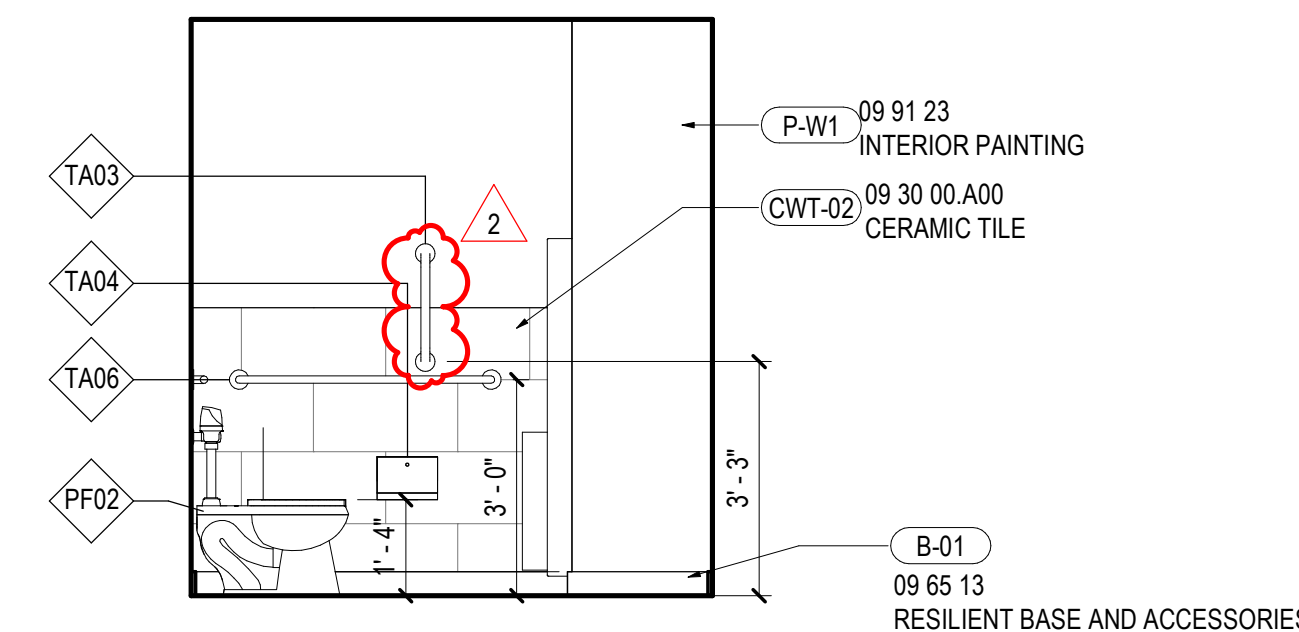
01 ENLARGED PLAN - PUBLIC BATHROOM
SCALE: 1/4" = 1'-0"



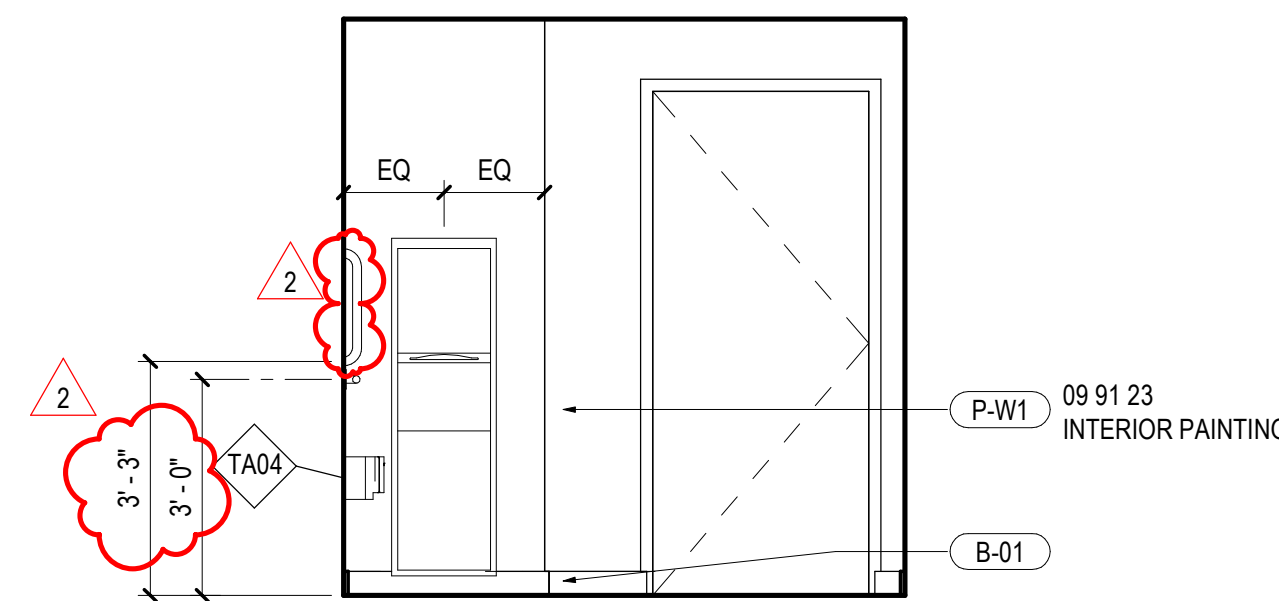
02 RCP - PUBLIC BATHROOM
SCALE: 1/4" = 1'-0"



03 ELEVATION - PUBLIC BATHROOM A
SCALE: 3/8" = 1'-0"



04 ELEVATION - PUBLIC BATHROOM B
SCALE: 3/8" = 1'-0"



05 ELEVATION - PUBLIC BATHROOM C
SCALE: 3/8" = 1'-0"

GENERAL NOTES

1. REFER TO PROJECT MANUAL AND FINISH SCHEDULE FURTHER INFORMATION.
2. CONTINUE SCHEDULED FLOORING UNDER MILLWORK UNO.
3. SEALANT AND CAULKING SHALL MATCH FLOOR ADJACENT FINISHES. GO TO REVIEW WITH ARCHITECT PRIOR INSTALLATION.
4. PAINT FINISHES (TYP UNO); WALLS: EGGSHELL; DOOR/FRAMES: SEMIGLOSS; BASE: SEMIGLOSS; CEILINGS: FLAT; TOILET ROOMS: SEMIGLOSS.
5. DO NOT APPLY RESILIENT BASE UNDER MILLWORK.
6. TYPICAL FINISHES UNO: ALL WALLS TO BE PAINTED P-W1.
7. TYPICAL FINISHES UNO: ALL FLOORS TO BE RSP-10.
8. TYPICAL FINISHES UNO: ALL BASE TO BE B-02.
9. TYPICAL MILLWORK FINISHES UNO: ALL CABINETS TO BE PL-01 WITH INTEGRATED BASE. ALL COUNTER SURFACES TO BE SS-01.
10. ALL CHILD TOILET ROOMS TO RECEIVE RSP-10 FLOORING WITH INTEGRATED COVE BASE UNO.
11. ALL INTERIOR GLAZING TO BE GL-01 UNO.
12. PROVIDE CHILD-SAFE CASEWORK AND COUNTERTOPS WITH EASED EDGES OF RADIUS NO LESS THAN 1/16".
13. ROUND OFF CORNERS OF COUNTERTOPS AND EXPOSED SHELVES TO RADIUS OF NO LESS THAN 1/4".
14. ALL GYPSUM BOARD TO BE WITH MOISTURE AND MOLD RESISTANT CORE AND FACING SURFACES.

SHEET NOTES

REGENERON REAL ESTATE & FACILITIES MANAGEMENT

777 Old Saw Mill River Road
Tarrytown, NY 10591-6707
T: 914.847.7400
F: 914.847.7991
www.regeneron.com

Building #17 Campus Expansion Child Day-care Center

899 Old Saw Mill River Road
Mount Pleasant, NY 10591

Project No. B17-DAYCARE

Architect

Gensler
1700 Broadway, Suite 400
New York, NY 10019
(212) 492-1400 Phone
(212) 492-1472 Fax

Structural Engineer

Thornton Tomasetti
120 Broadway, 15th Floor
New York, NY 10271
(917) 661-7800 Phone
(917) 661-7800 Fax

MEP / IT / Security Engineer

Cosentini Associates
498 Seventh Avenue
New York, NY 10018
(212) 615-3600 Phone
(212) 615-3700 Fax

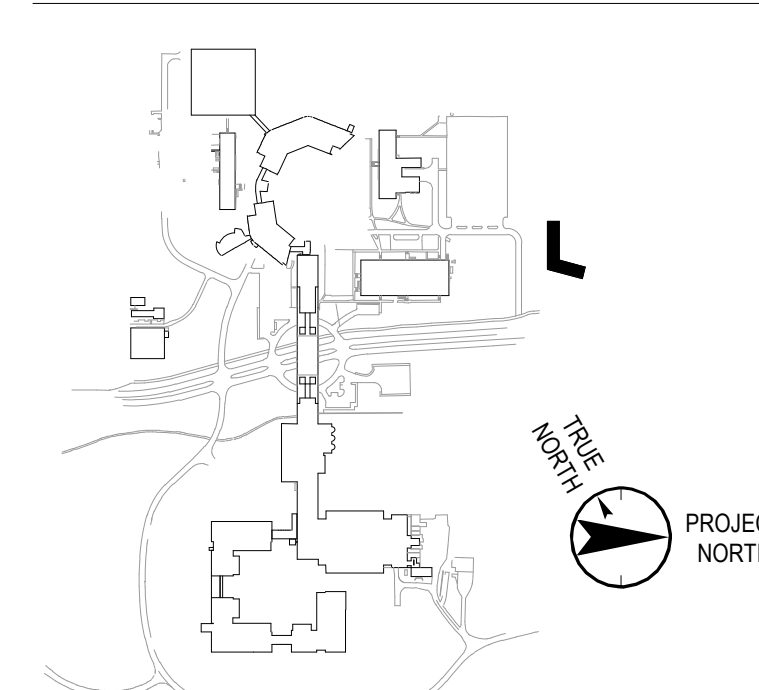
Civil Engineer

JMC
120 Bedford Road
Armonk, NY 10504
(914) 273-5225 Phone
(914) 273-2102 Fax

Landscape Architect

Langan
21 Penn Plaza, 360 West 31st Street, 8th Floor
New York, NY 10001
(212) 479-5400 Phone
(212) 479-5444 Fax

Key Plan



No. Date Description

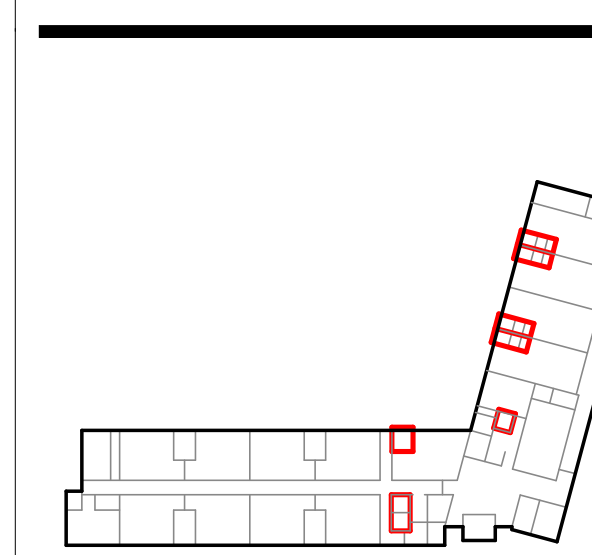
- | | | |
|---|------------|-------------------------------|
| 0 | 05.20.2022 | ISSUED FOR PERMIT |
| 1 | 06.20.2022 | 100% CONSTRUCTION DOCUMENTS |
| 2 | 07.01.2022 | 100% CONSTRUCTION DOCUMENTS-1 |

Plot Date: 07.01.2022

ALL DRAWINGS AND WRITTEN MATERIALS REPRESENTED ON THIS SHEET CONSTITUTE THE COPYRIGHTED WORK AND ARE THE SOLE PROPERTY OF REGENERON PHARMACEUTICALS. THIS SHEET MAY NOT BE REPRODUCED OR COPIED IN WHOLE OR IN PART, NOR MAY ANY OF THE DRAWINGS OR WRITTEN MATERIALS BE REPRODUCED, COPIED, OR INCORPORATED INTO ANY OTHER WORK FOR ANY REASON WITHOUT THE WRITTEN CONSENT OF REGENERON PHARMACEUTICALS. THIS SHEET MUST BE RETAINED UPON THE COMPLETION OF THE PROJECT WITHOUT THE EXPRESS WRITTEN CONSENT OF DESIGN PROFESSIONAL. REGENERON ASSUMES FULL RESPONSIBILITY FOR ANY AND ALL RISKS INVOLVED IN SUCH REUSE.

Professional Seal and Signature

KEY PLAN



Vendor Name: GENSLER
Vendor Project No.: 006.3608.000
Discipline: ARCHITECTURE Drawn By: GENSLER
ENLARGED PLANS AND ELEV - BATHROOMS

Scale: As indicated Floor: 1

A-410