

777 Old Saw Mill River Road
Tarrytown, NY 10591-6707
T: 914.847.7400
F: 914.847.7991
www.regeneron.com

Building #17
Campus Expansion Child
Day-care Center

899 Old Saw Mill River Road
Mount Pleasant, NY 10591

Project No. B17-DAYCARE

Architect
Gensler

1700 Broadway, Suite 400
New York, NY 10019
(212) 492-1400 Phone
(212) 492-1472 Fax

Structural Engineer

Thornton Tomasetti
120 Broadway, 15th Floor
New York, NY 10271
(917) 661-7800 Phone
(917) 661-7801 Fax

MEP / IT / Security Engineer

Cosentini Associates
498 Seventh Avenue
New York, NY 10018
(212) 615-3600 Phone
(212) 615-3700 Fax

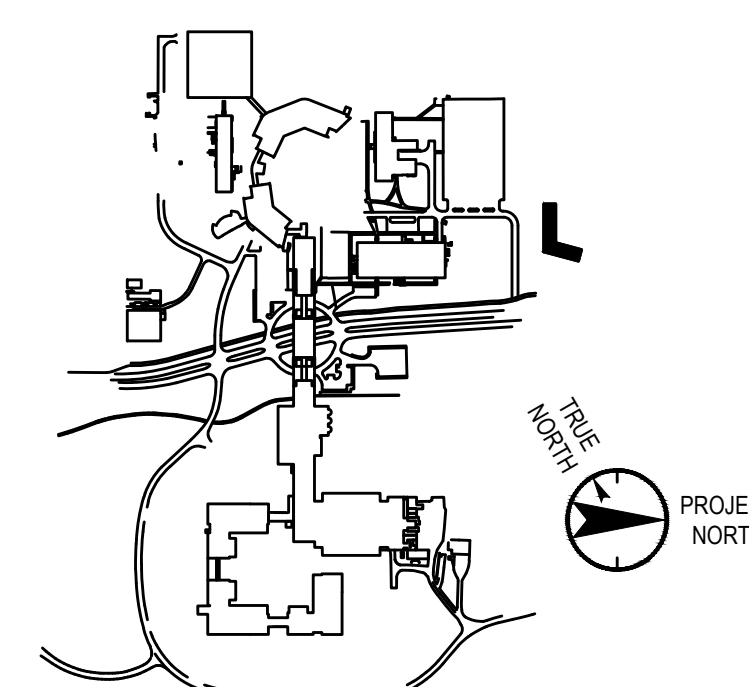
Civil Engineer

JMC
120 Bedford Road
Armonk, NY 10504
(914) 273-5225 Phone
(914) 273-2102 Fax

Landscape Architect

Langan
21 Penn Plaza, 360 West 31st Street, 8th Floor
New York, NY 10001
(212) 479-5400 Phone
(212) 479-5444 Fax

Key Plan



No. Date Description

- 0 05/20/2022 ISSUED FOR PERMIT
1 06/20/2022 100% CONSTRUCTION DOCUMENTS
2 07/01/2022 100% CONSTRUCTION DOCUMENTS-1

Plot Date: 07/01/2022

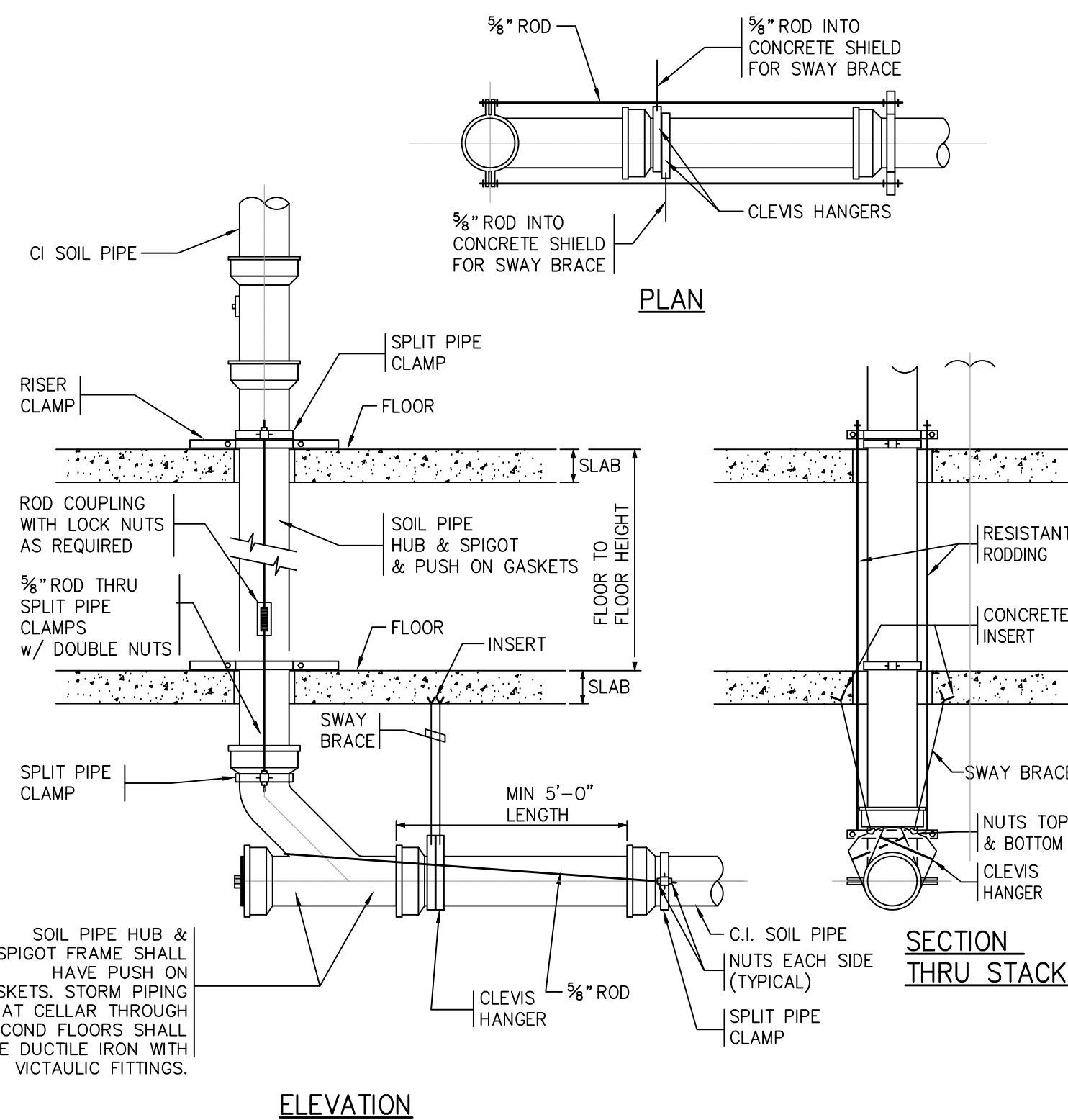
ALL DRAWINGS AND WRITTEN MATERIALS REPRESENTED ON THIS SHEET CONSTITUTE THE
COPYRIGHTED WORK AND ARE THE SOLE PROPERTY OF REGENERON PHARMACEUTICALS.
THIS SHEET MAY NOT BE REPRODUCED OR COPIED IN WHOLE OR IN PART, NOR MAY ANY
OF THE DRAWINGS OR WRITTEN MATERIALS APPEARING HEREIN BE REPRODUCED OR COPIED
IN ANY MANNER FOR ANY REASON WITHOUT THE WRITTEN CONSENT OF REGENERON
PHARMACEUTICALS. THE SHEET MAY BE REPRODUCED FOR THE EXCLUSIVE USE OF THE
REGENERON PHARMACEUTICALS. IF REGENERON PHARMACEUTICALS OR AUTHORIZED RESALE OF ANY
SUCH DOCUMENT OR INFORMATION RESULTS IN DESIGN PROFESSIONAL OUTSIDE OF
THE PROJECT WITHOUT THE EXPRESS WRITTEN CONSENT OF DESIGN PROFESSIONAL,
REGENERON ASSUMES FULL RESPONSIBILITY FOR ANY AND ALL ISSUES PREVIOUSLY IN SUCH
REUSE.

Professional Seal and Signature

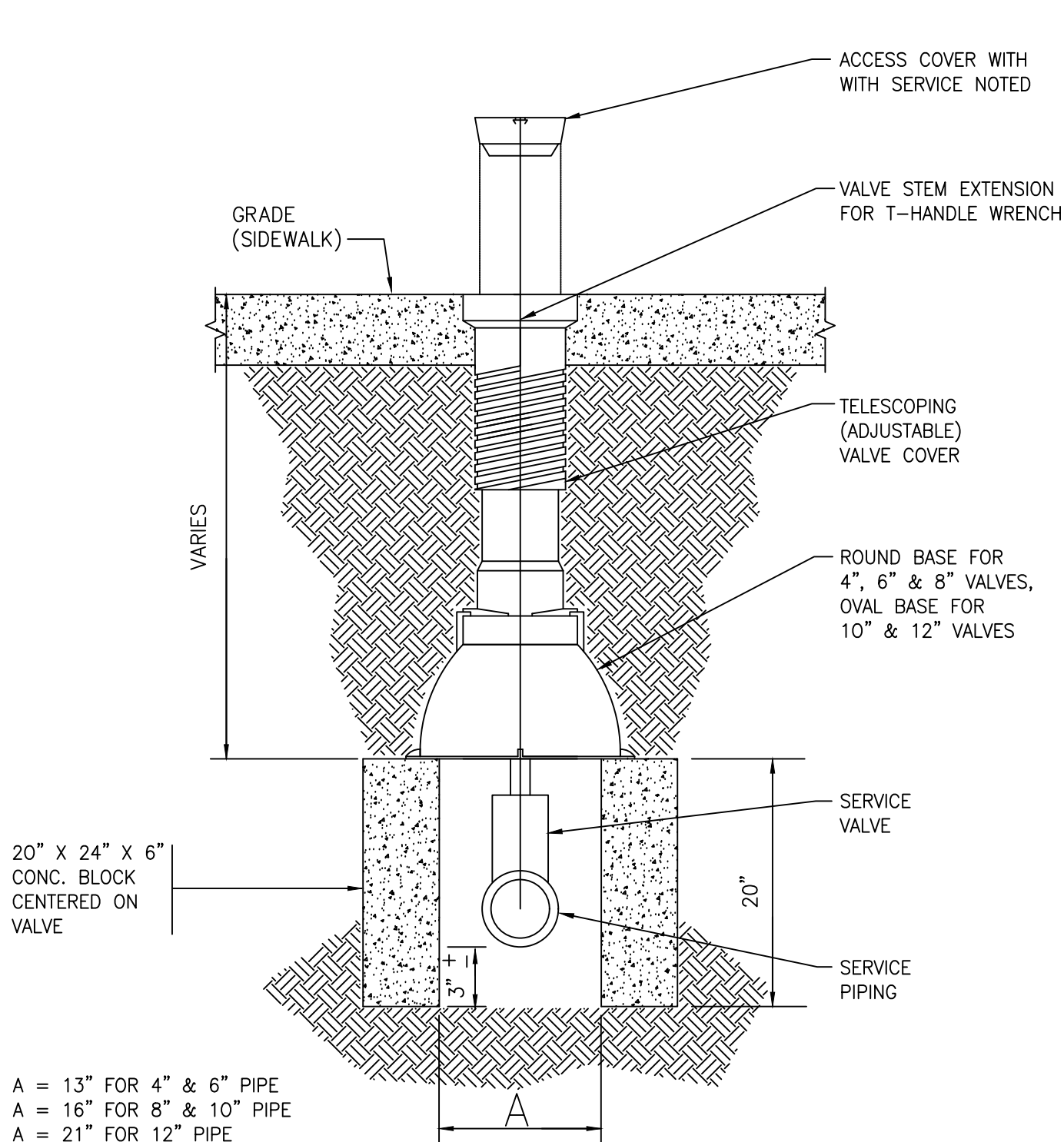
Vendor Name: COSENTINI
Vendor Project No.: 210104
Discipline: Plumbing Drawn By: DH
PLUMBING
DETAILS

Scale: NTS Floor: N/A

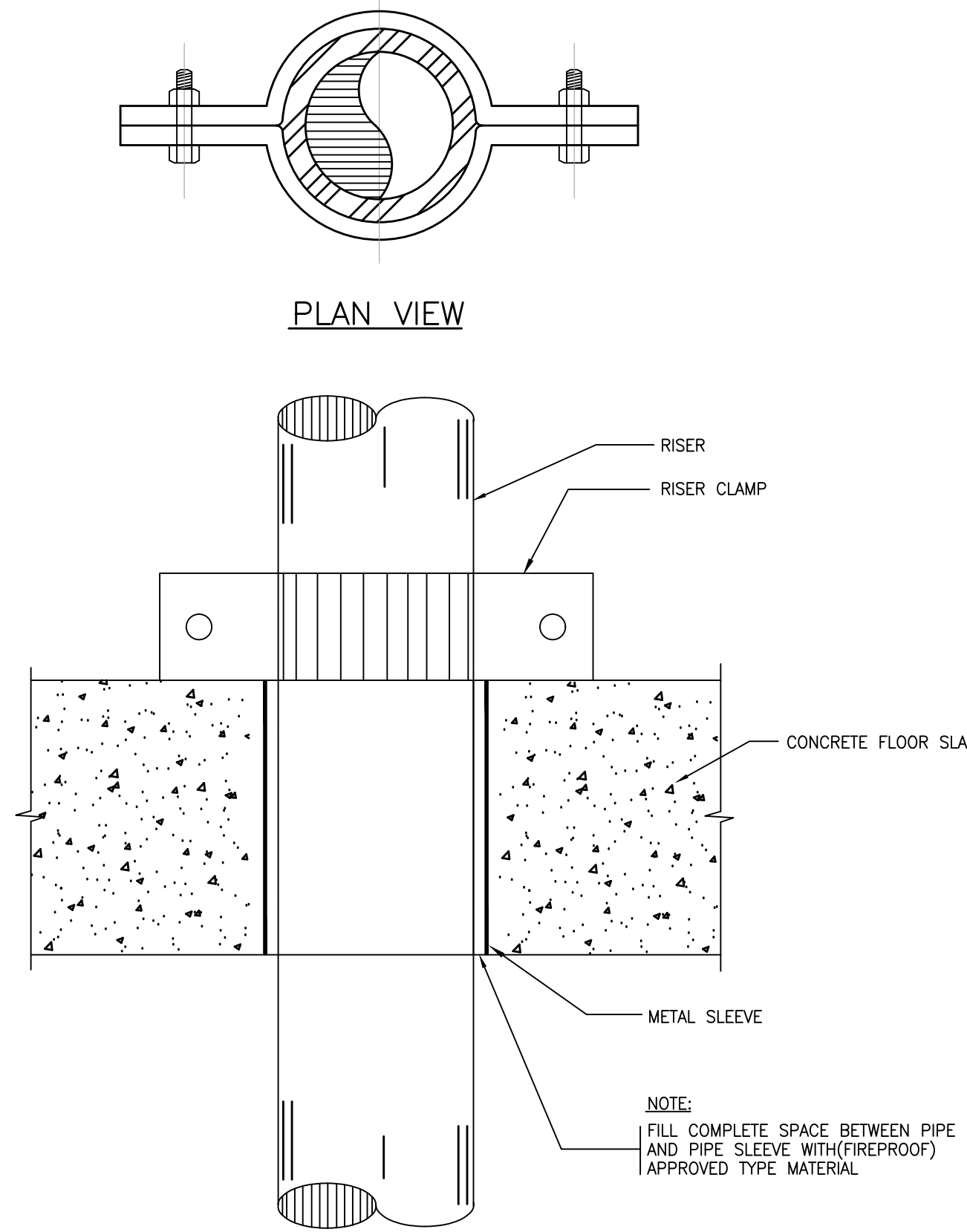
P-500



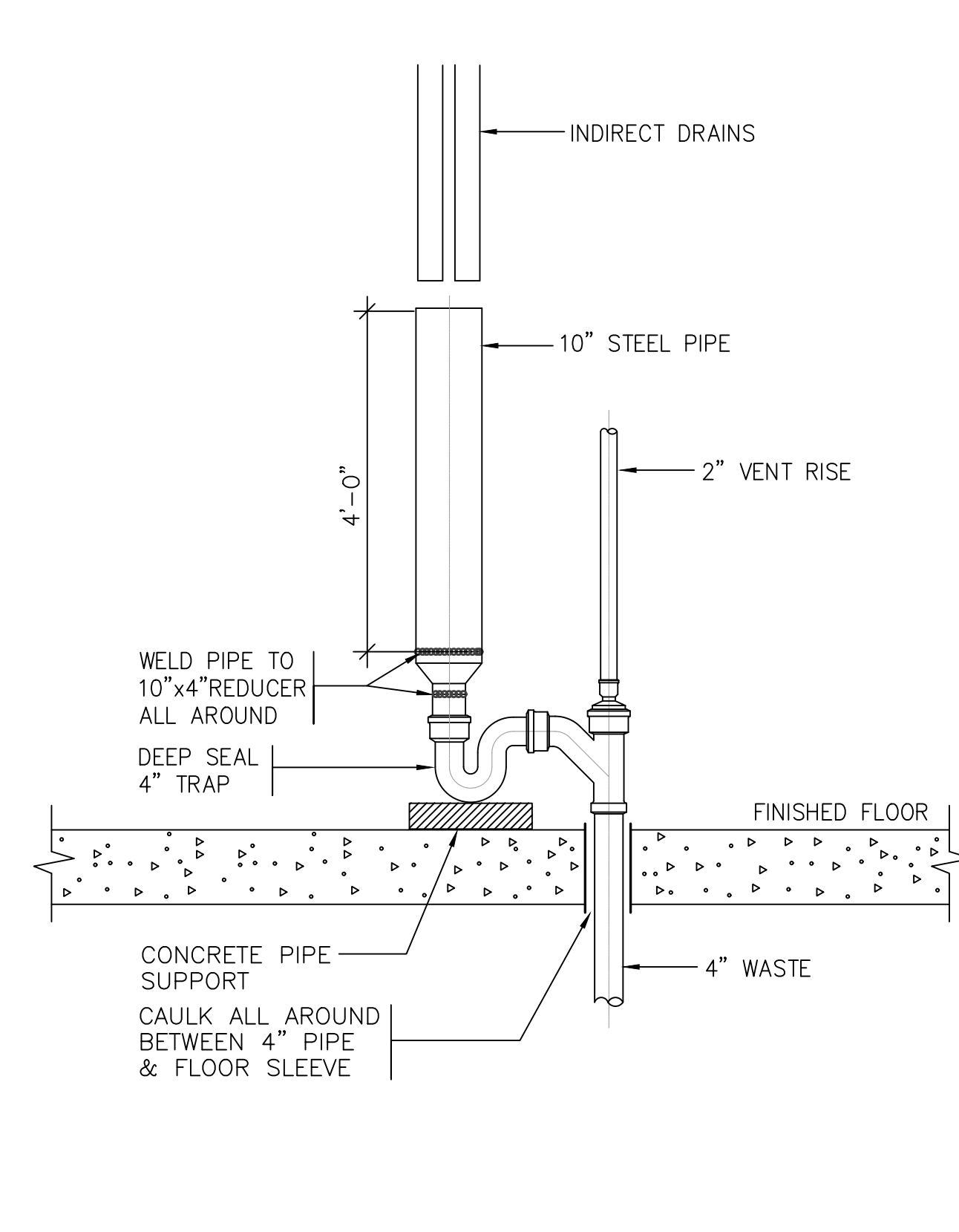
DETAIL OF PIPING AT BASE OF STACKS
BASE OF LEADERS SIMILAR
NO SCALE



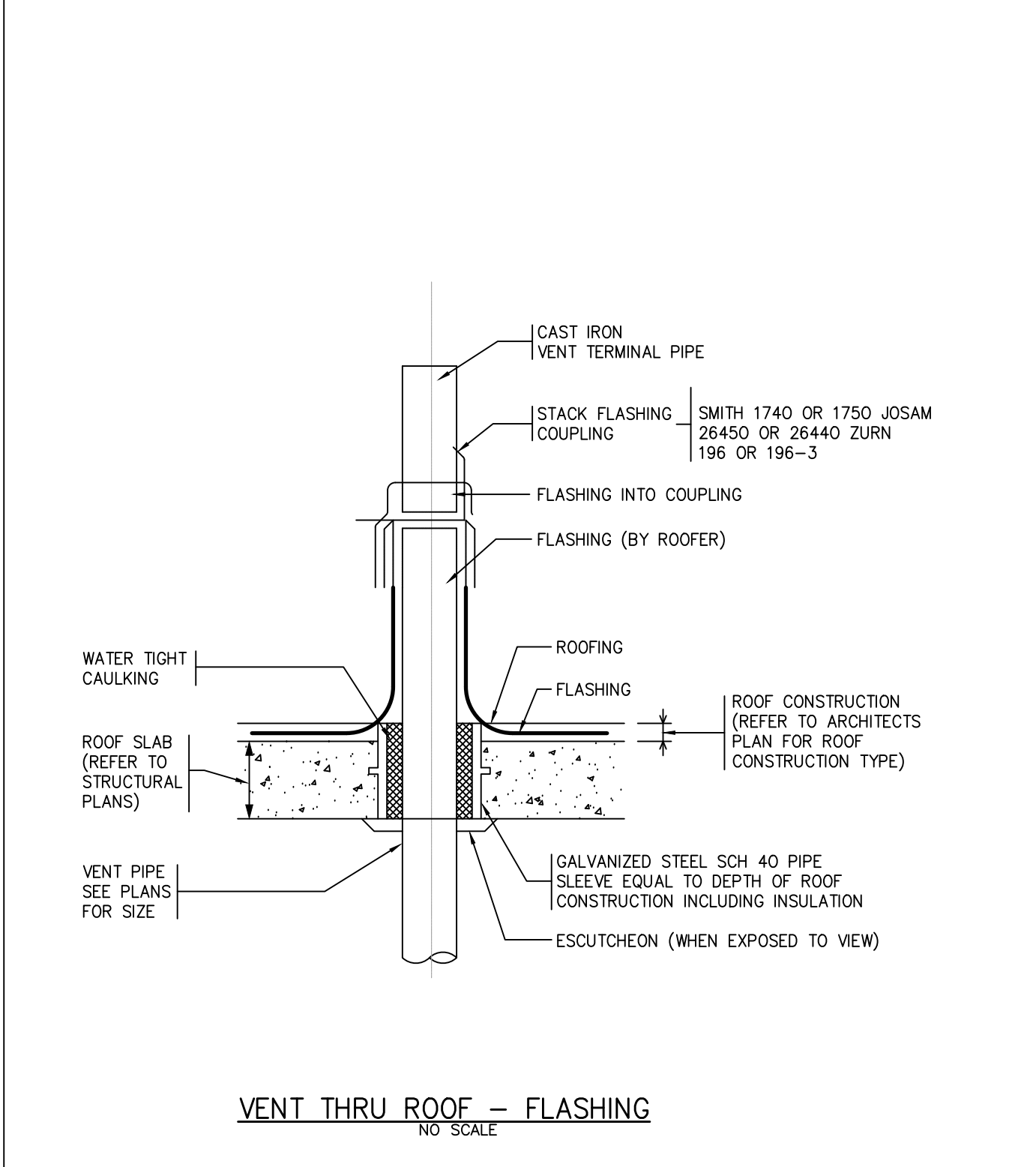
TYPICAL SERVICE VALVE BOX DETAIL
NOT TO SCALE



TYPICAL RISER ANCHOR DETAIL
NO SCALE



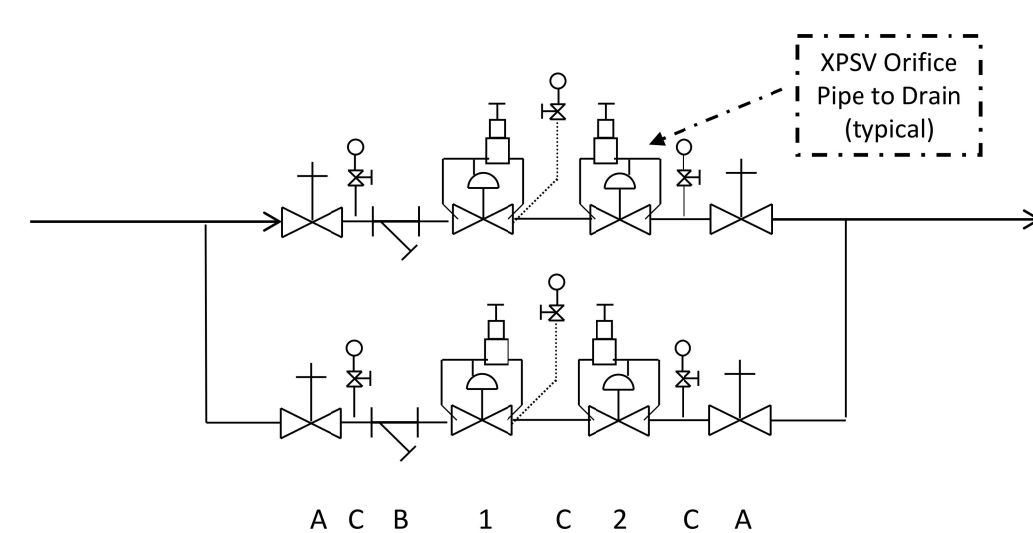
TYPICAL INDIRECT WASTE RECEPTOR
NO SCALE



VENT THRU ROOF - FLASHING
NO SCALE

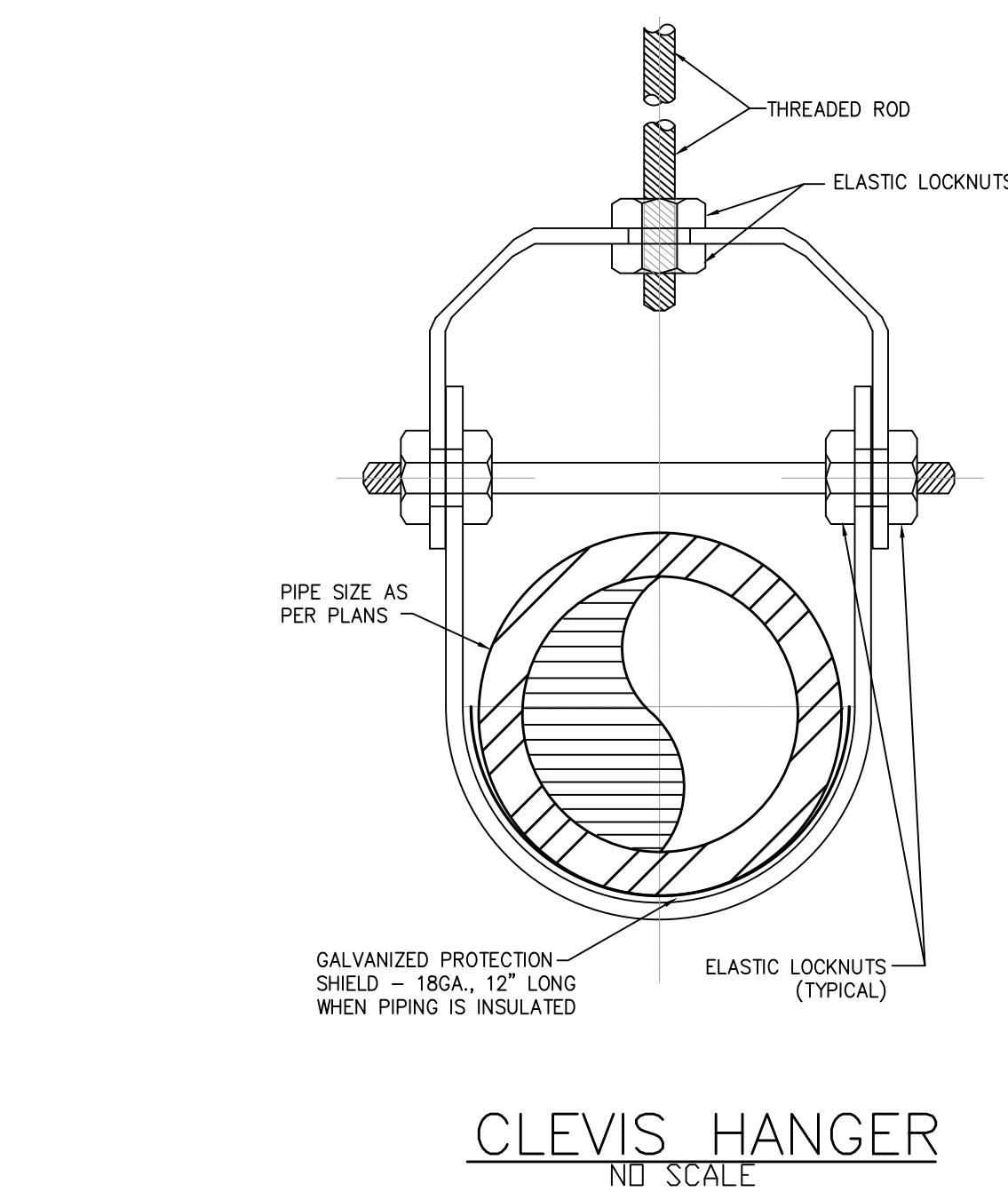


Project: Regeneron - Day Care Facility, Tarrytown NY
Engineer: Cosentini Associates, New York, NY
Equipment: Master Pressure Reducing Valve Stations - Domestic Water
Legend: 1 = PRV Pressure Reducing Valve, Cla-Val 90-02AS30KHCSI 150 lb Flanged LF Bronze Body SS Trim 30-300 psi EPDM
2 = XPSV Excess Pressure Safety Valve, Cla-Val 50G-330KHCSI 150 lb Flanged LF Bronze Body & Trim 20-200 psi EPDM
A = Isolation Valve, (Full Ported)
B = Y-Strainer, SS Body 150 lb Flanged Ends
C = Pressure Gauge, 4\"/>

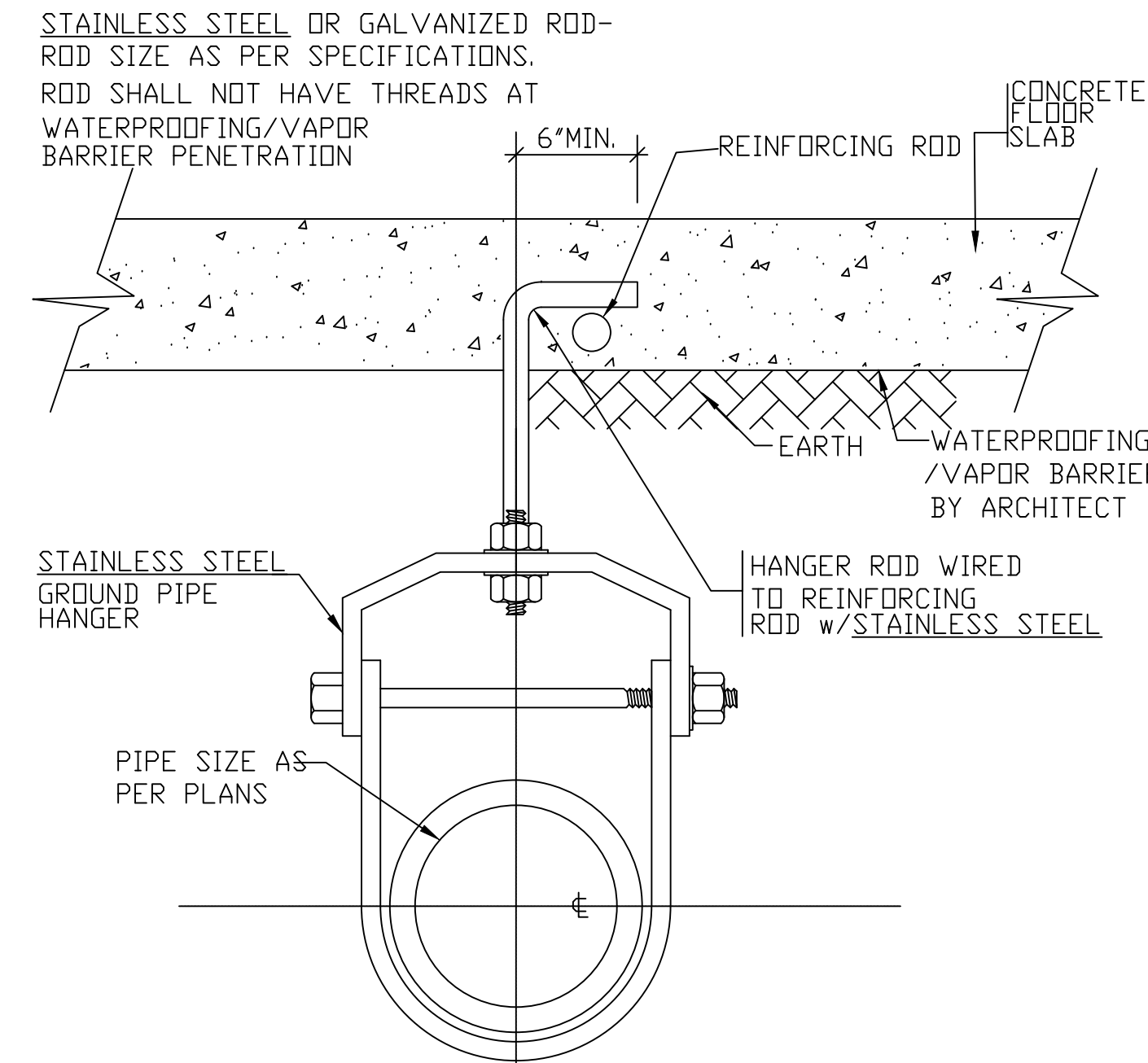


PRV Zone	Valve Size	Inlet PSI	PRV 1 Setpoint	XPSV 2 Setpoint	Design Capacity
Main Service	3.0"	164 psi	80 psi	95 psi	175 gpm

Harper Control Solutions, Inc. | 1010 Washington Blvd, Stamford, CT 06901 | T: 203.964.1900 | F: 203.964.4100 | F: 203.964.4800 | harpervalves.com



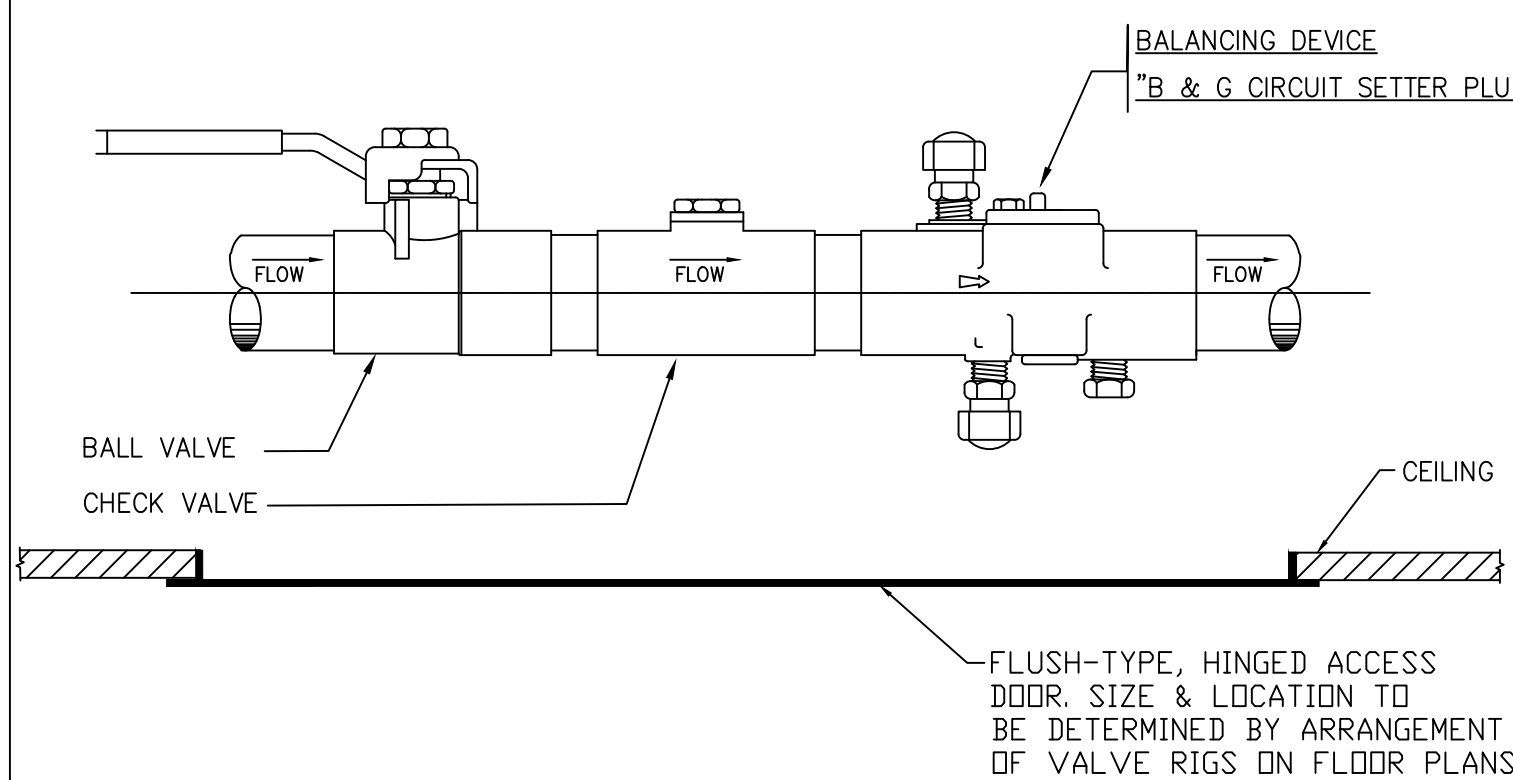
CLEVIS HANGER
NO SCALE



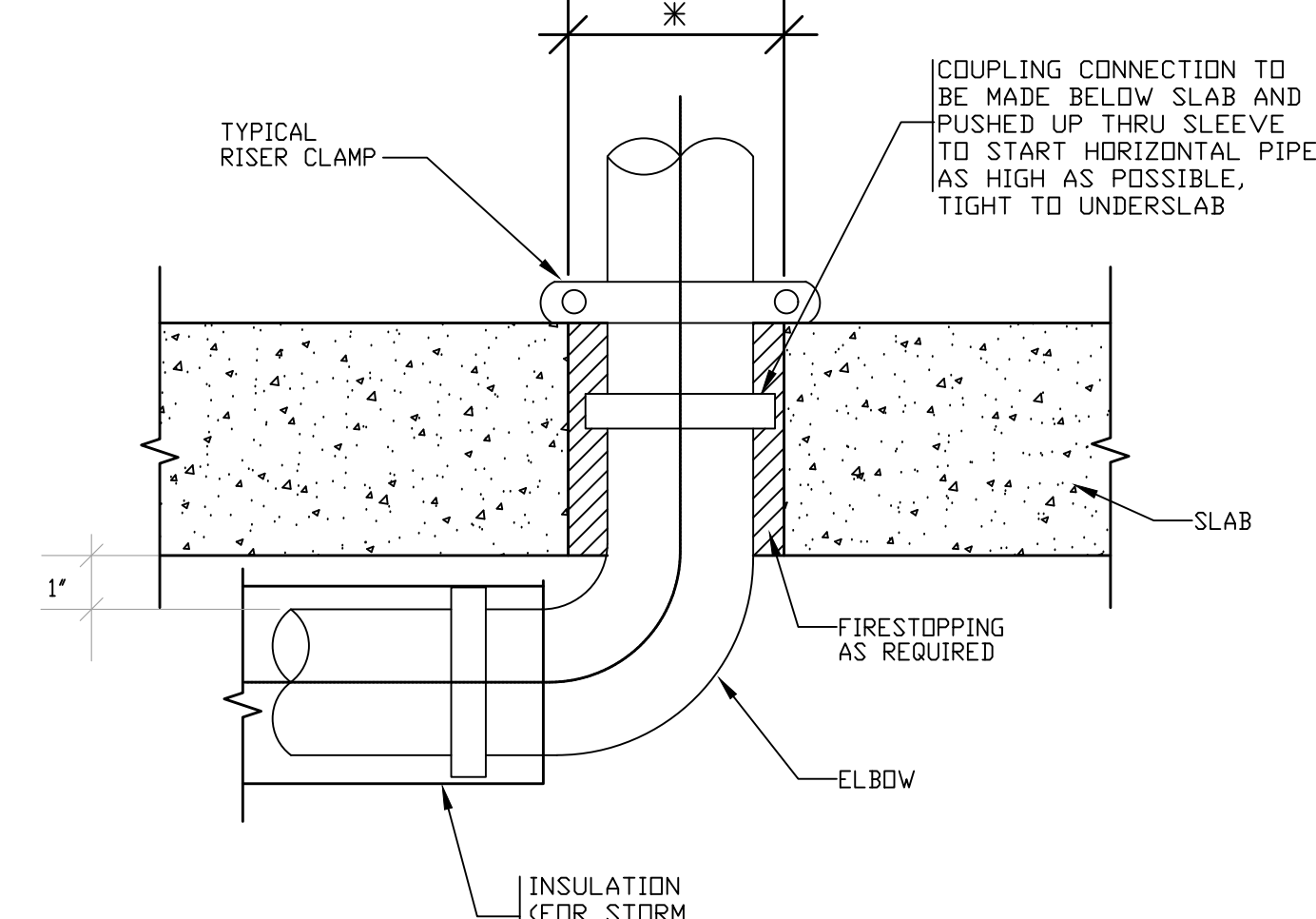
NOTES

1. ALL BURIED HANGER RODS, UNDERGROUND, SHALL BE COATED w/BITUMASTIC/ASPHALT - MINIMUM TWO COATS
2. ALL HANGERS, RODS, NUTS, BOLTS & ACCESSORIES OF STAINLESS STEEL.
3. IN CORROSIVE SOIL CONDITIONS, ALL PIPE AND FITTINGS SHALL BE COATED w/BITUMASTIC/ASPHALT - MINIMUM TWO COATS.

PIPE SUPPORT FOR
UNDERGROUND DRAINAGE PIPING
NOT TO SCALE

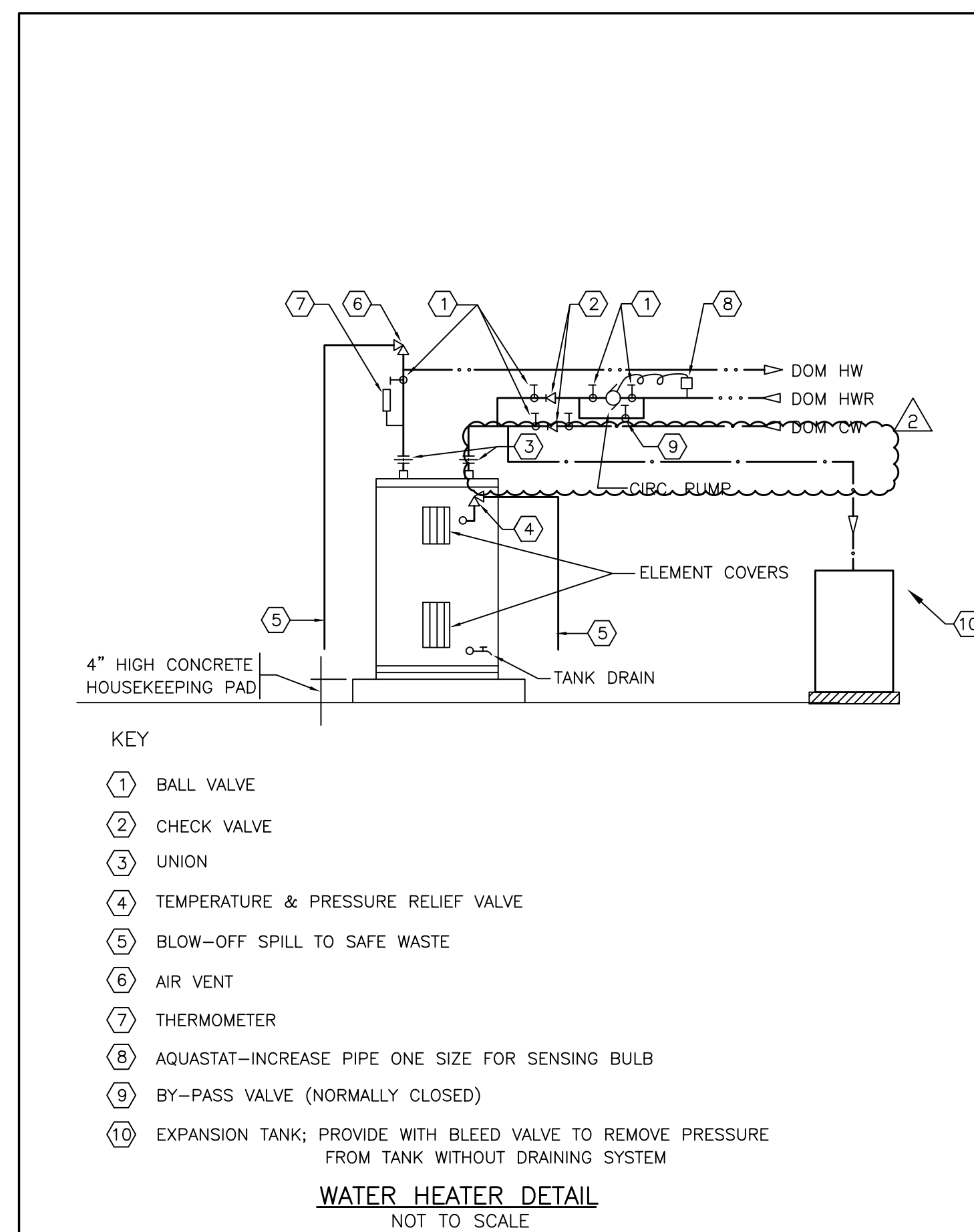


TYPICAL BALANCING VALVE RIG
NO SCALE

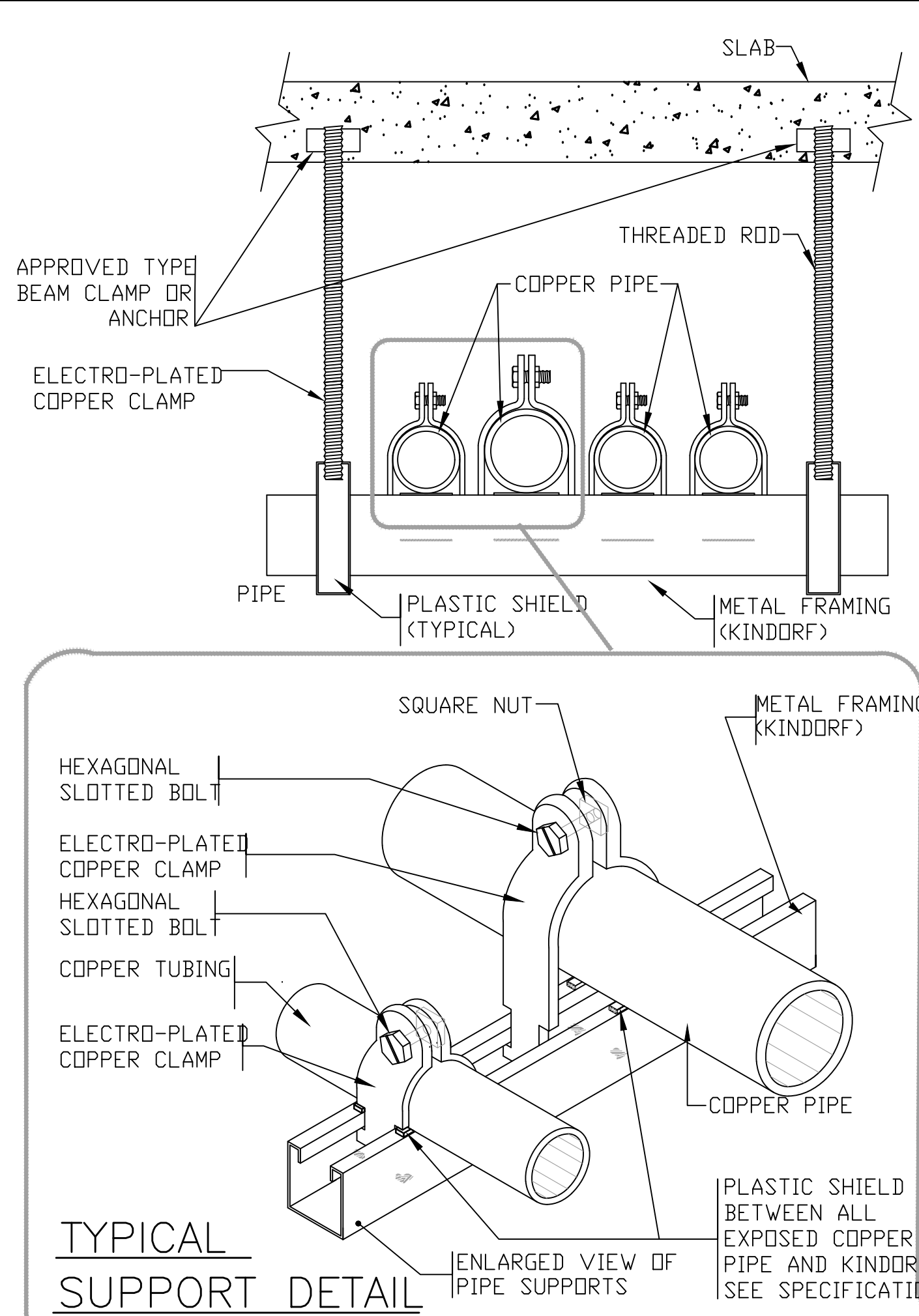


* SLEEVE SIZE TO ACCOMMODATE COUPLING

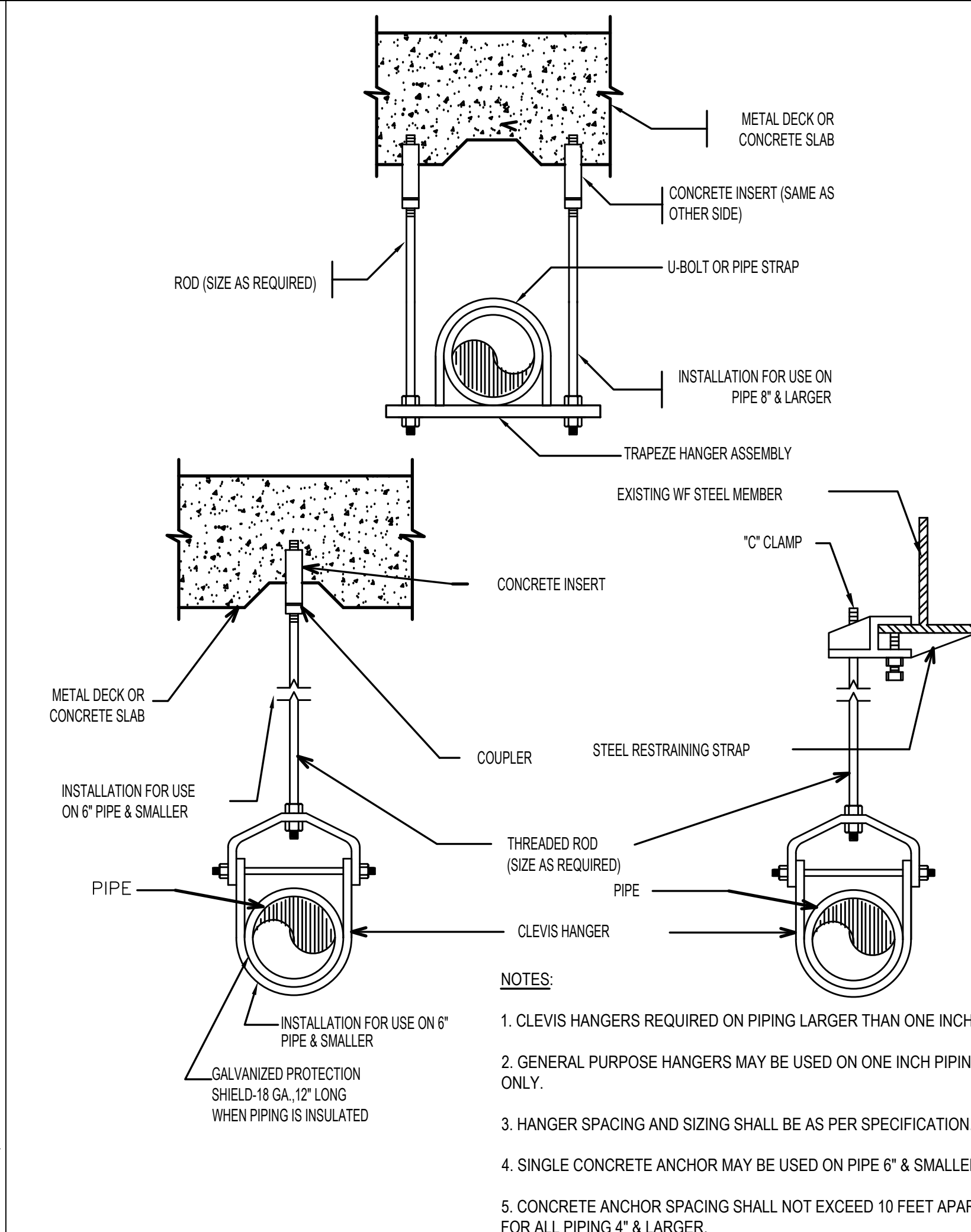
TYPICAL VERTICAL-TURN-HORIZONTAL
DRAIN PIPING DETAIL
NO SCALE



WATER HEATER DETAIL
NOT TO SCALE



TYPICAL
SUPPORT DETAIL
NOT TO SCALE



NOTES

1. CLEVIS HANGERS REQUIRED ON PIPING LARGER THAN ONE INCH.
2. GENERAL PURPOSE HANGERS MAY BE USED ON ONE INCH PIPING ONLY.
3. HANGER SPACING AND SIZING SHALL BE AS PER SPECIFICATION.
4. SINGLE CONCRETE ANCHOR MAY BE USED ON PIPE 6\"/>

TO THE BEST OF MY KNOWLEDGE, BELIEF AND PROFESSIONAL JUDGMENT, THESE PLANS AND SPECIFICATIONS ARE IN COMPLIANCE WITH THE 2020 ENERGY CONSERVATION CODE OF NYS

This plan is approved only for work indicated on the application specification sheet. All other matters shown are not to be relied upon, or to be considered as either being approved or in accordance with applicable codes.

Alterations or additions to this engineering document by an unlicensed person is a violation of Chapter 16, Title VIII, Article 145 § 7209.2 of the New York State Education Law.