

777 Old Saw Mill River Road
Tarrytown, NY 10591-6707
T: 914.847.7400
F: 914.847.7991
www.regeneron.com

Building #17
Campus Expansion Child
Day-care Center

899 Old Saw Mill River Road
Mount Pleasant, NY 10591

Project No. B17-DAYCARE

Architect

Gensler

1700 Broadway, Suite 400
New York, NY 10019
(212) 492-1400 Phone
(212) 492-1472 Fax

Structural Engineer

Thornton Tomasetti
120 Broadway, 15th Floor
New York, NY 10271
(917) 661-7800 Phone
(917) 661-7801 Fax

MEP / IT / Security Engineer

Cosentini Associates
498 Seventh Avenue
New York, NY 10504
(914) 273-5225 Phone
(212) 615-3700 Fax

Civil Engineer

JMC

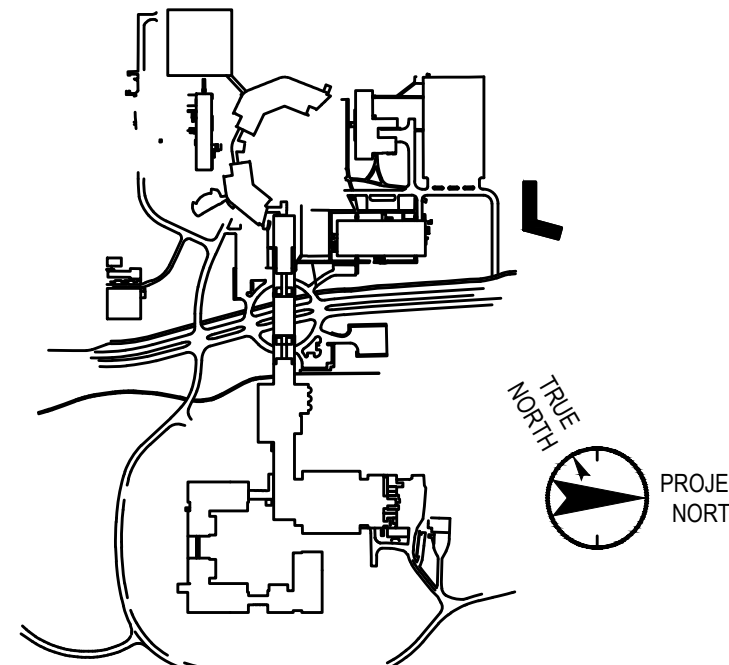
120 Bedford Road
Armonk, NY 10504
(914) 273-5225 Phone
(914) 273-2102 Fax

Landscape Architect

Langan

21 Penn Plaza, 360 West 31st Street, 8th Floor
New York, NY 10001
(212) 479-5400 Phone
(212) 479-5444 Fax

Key Plan



No. Date Description

0 06.20.2022 100% CONSTRUCTION DOCUMENTS
1 07.01.2022 100% CONSTRUCTION DOCUMENTS-1

Plot Date: 07.01.2022

ALL DRAWINGS AND WRITTEN MATERIALS REPRESENTED ON THIS SHEET CONSTITUTE THE COPYRIGHTED WORK AND ARE THE SOLE PROPERTY OF REGENERON PHARMACEUTICALS. THIS SHEET MAY NOT BE REPRODUCED OR COPIED IN WHOLE OR IN PART, NOR MAY ANY OF THE DRAWINGS OR WRITTEN MATERIALS APPEARING HEREON BE REPRODUCED INTO ANOTHER WORK FOR ANY REASON WITHOUT THE WRITTEN CONSENT OF REGENERON PHARMACEUTICALS. THIS SHEET IS THE PROPERTY OF REGENERON PHARMACEUTICALS. REGENERON PHARMACEUTICALS, IF REGENERON NAMES OR AUTHORIZES RELEASE OF ANY SUCH DOCUMENTS OR INFORMATION FOR PUBLIC USE, SHALL BE RESPONSIBLE FOR THE PROTECTION OF THE PROJECT WITHOUT THE EXPRESS WRITTEN CONSENT OF DESIGN PROFESSIONAL. REGENERON ASSUMES FULL RESPONSIBILITY FOR ANY AND ALL RISKS PROVIDED IN SUCH RELEASE.

Professional Seal and Signature

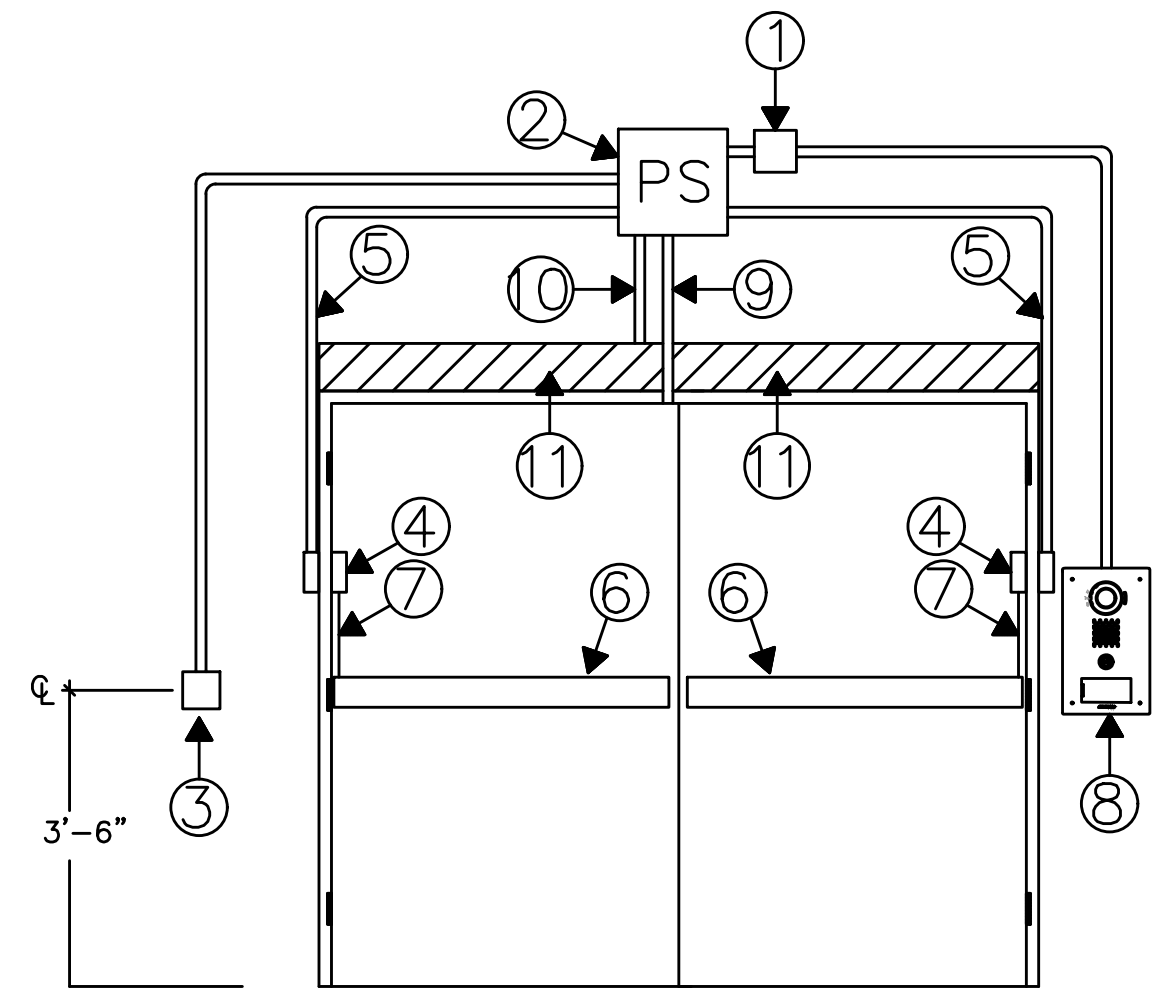
Vendor Name: COSENTINI
Vendor Project No.: 210104
Discipline: SECURITY Drawn By: PG

SECURITY DETAILS
SHEET #1

Scale: NTS

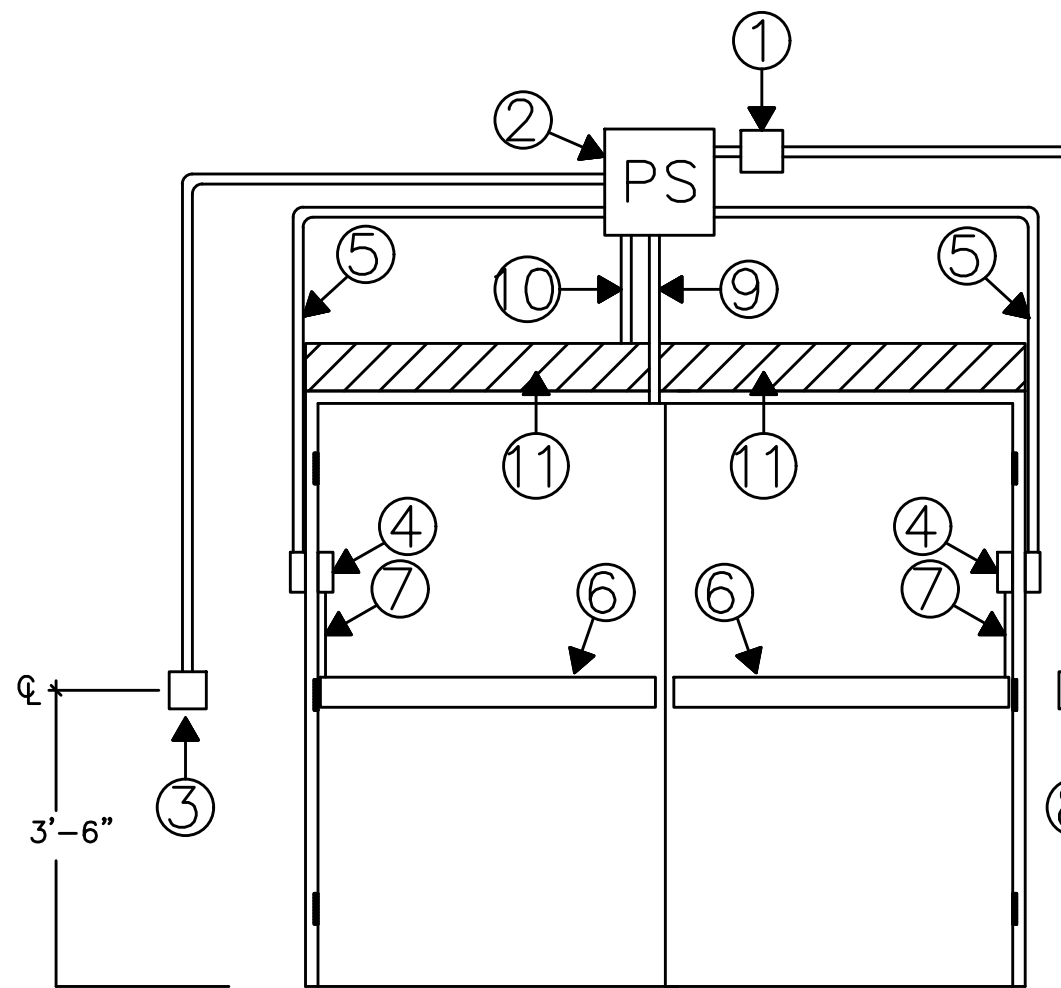
Foot:

TY-500



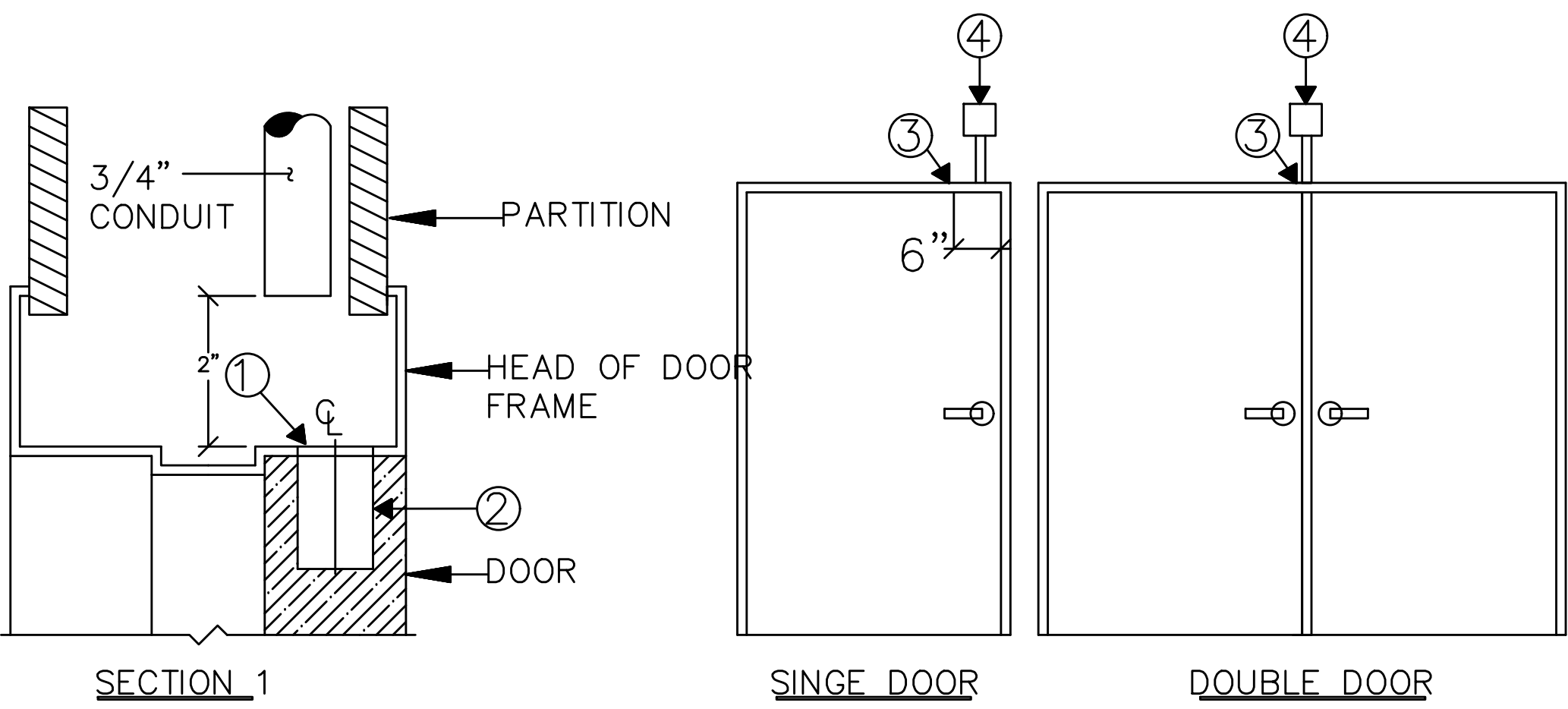
EXTERIOR DOUBLE DOOR WITH HANDICAP OPENER AND ELECTRIC LATCH RETRACTION

- 1 PROVIDE 5" X 5" X 2 7/8" DEEP JUNCTION BOX WITH BLANK COVER PLATE, SURFACE MOUNTED ABOVE DOOR, ABOVE ACCESSIBLE CEILING, ON SECURE SIDE OF DOOR.
- 2 POWER SUPPLY FOR ELECTRONIC PANIC BAR HARDWARE, PROVIDED BY OTHERS, SURFACE MOUNTED ABOVE DOOR, ABOVE ACCESSIBLE CEILING, ON SECURE SIDE OF DOOR. 120VAC REQUIRED
- 3 PROVIDE 4" X 4" X 2 1/8" DEEP BOX WITH RAISED DEVICE COVER FLUSH MOUNTED 3'-6" A.F.F. FOR HANDWAVE EXIT BUTTONS.
- 4 VON DUPRIN EPT-10 ELECTRIC POWER TRANSFER DEVICE, PROVIDED BY OTHER.'
- 5 PROVIDE 3/4" FLEXIBLE CONDUIT FROM ELECTRIC POWER TRANSFER DEVICE TO POWER SUPPLY FOR ELECTRONIC PANIC BAR HARDWARE.
- 6 VON DUPRIN ELECTRONIC PANIC BAR HARDWARE, PROVIDED BY OTHERS.
- 7 CABLE PATHWAY FOR ELECTRONIC PANIC BAR HARDWARE.
- 8 ALIPHONE SBX-IDVFA 11-11116" x 7" x 3-5 1/16" (top); 2-5 1/16" (bottom SURFACE MOUNT BOX) MOUNTED 3'-6" A.F.F. FOR CARD READER/INTERCOM ON UNSECURED SIDE OF DOOR.
- 9 STUB 1/2" CONDUIT INTO HEAD OF DOOR FRAME FOR CONCEALED DOOR POSITION SWITCH. SEE DETAIL 1 ON THIS PAGE.
- 10 PROVIDE CONDUIT INTO AUTOMATIC DOOR OPENER FOR LOW VOLTAGE CONNECTIONS
- 11 RECORD DOOR OPERATORS TO BE SUPPLIED AND INSTALLED BY LONG ISLAND AUTOMATIC DOORS 85 SOUTH TERMINAL DRIVE, PLAINVIEW, NY 11803. PHONE: 516-931-2273. SALES FAX: 516-575-0041. ATTN: ANDREW CARR. EMAIL: andrewc@locksmith.com. 1 -120VAC BREAKER REQUIRED FOR DOOR OPENER.



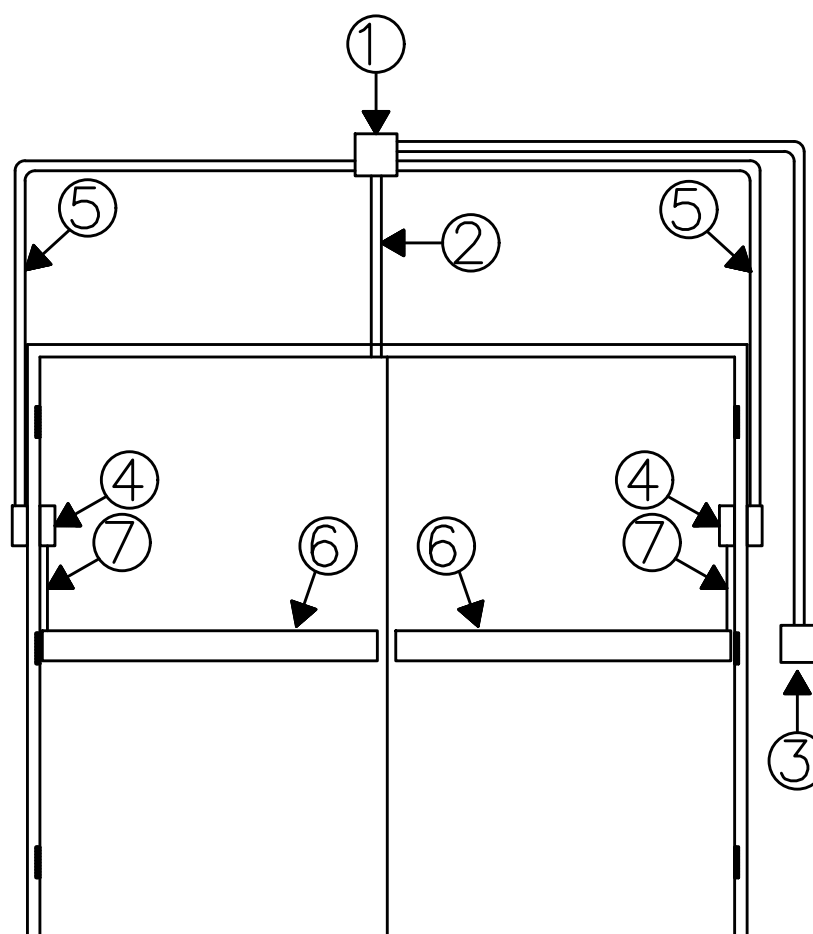
EXTERIOR DOUBLE DOOR WITH HANDICAP OPENER AND ELECTRIC LATCH RETRACTION

- 1 PROVIDE 5" X 5" X 2 7/8" DEEP JUNCTION BOX WITH BLANK COVER PLATE, SURFACE MOUNTED ABOVE DOOR, ABOVE ACCESSIBLE CEILING, ON SECURE SIDE OF DOOR.
- 2 POWER SUPPLY FOR ELECTRONIC PANIC BAR HARDWARE, PROVIDED BY OTHERS, SURFACE MOUNTED ABOVE DOOR, ABOVE ACCESSIBLE CEILING, ON SECURE SIDE OF DOOR. 120VAC REQUIRED
- 3 PROVIDE 4" X 4" X 2 1/8" DEEP BOX WITH RAISED DEVICE COVER FLUSH MOUNTED 3'-6" A.F.F. FOR HANDWAVE EXIT BUTTONS.
- 4 VON DUPRIN EPT-10 ELECTRIC POWER TRANSFER DEVICE, PROVIDED BY OTHER.'
- 5 PROVIDE 3/4" FLEXIBLE CONDUIT FROM ELECTRIC POWER TRANSFER DEVICE TO POWER SUPPLY FOR ELECTRONIC PANIC BAR HARDWARE.
- 6 VON DUPRIN ELECTRONIC PANIC BAR HARDWARE, PROVIDED BY OTHERS.
- 7 CABLE PATHWAY FOR ELECTRONIC PANIC BAR HARDWARE.
- 8 PROVIDE 4" X 4" X 2 1/8" DEEP BOX WITH SINGLE GANG DEVICE RING FLUSH MOUNTED 3'-6" A.F.F. FOR CARD READER ON UNSECURED SIDE OF DOOR.
- 9 STUB 1/2" CONDUIT INTO HEAD OF DOOR FRAME FOR CONCEALED DOOR POSITION SWITCH. SEE DETAIL 1 ON THIS PAGE.
- 10 PROVIDE CONDUIT INTO AUTOMATIC DOOR OPENER FOR LOW VOLTAGE CONNECTIONS
- 11 RECORD DOOR OPERATORS TO BE SUPPLIED AND INSTALLED BY LONG ISLAND AUTOMATIC DOORS 85 SOUTH TERMINAL DRIVE, PLAINVIEW, NY 11803. PHONE: 516-931-2273. SALES FAX: 516-575-0041. ATTN: ANDREW CARR. EMAIL: andrewc@locksmith.com. 1 -120VAC BREAKER REQUIRED FOR DOOR OPENER.



- 1 15/16" DIA. HOLE IN HEAD OF FRAME 6" FROM STRIKE SIDE OF FRAME FOR CONCEALED DOOR POSITION SWITCH
- 2 15/16" X 1 5/8" DEEP HOLE IN TOP OF DOOR FOR CONCEALED DOOR POSITION SWITCH MAGNET.
- 3 STUB 1/2" CONDUIT INTO HEAD OF DOOR FRAME ON CENTER FOR DOUBLE DOOR OR 6" FROM STRIKE SIDE OF FRAME FOR SINGLE DOORS. SECTION 1
- 4 PROVIDE 4" X 4" X 2 1/8" DEEP JUNCTION BOX SURFACE MOUNTED ABOVE DOOR, ABOVE ACCESSIBLE CEILING, ON SECURE SIDE OF DOOR.

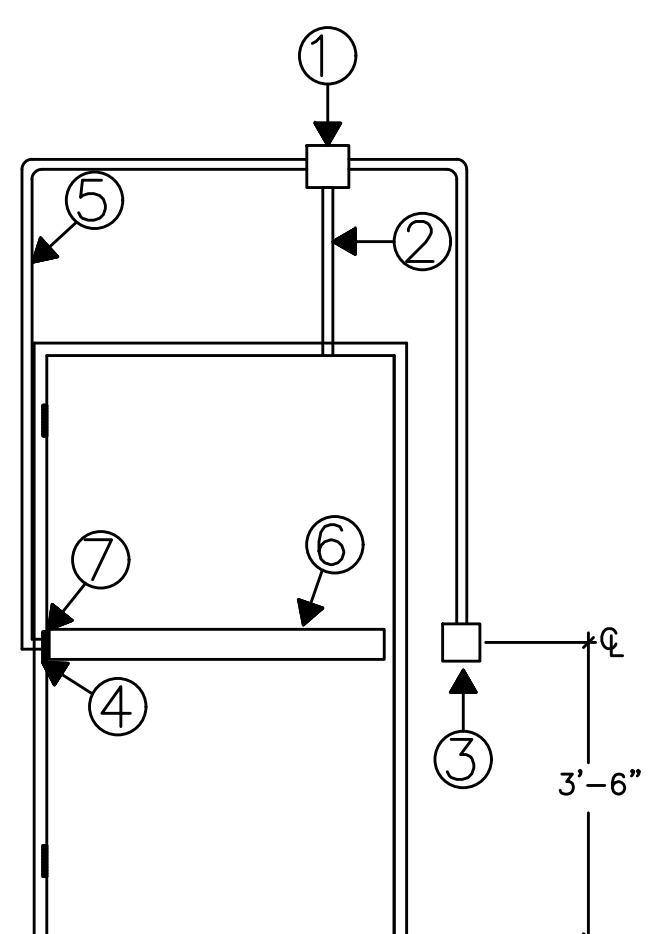
1 TYPICAL CONDUIT REQUIREMENTS FOR DOORS WITH CONCEALED DOOR POSITION SWITCH



DOUBLE DOOR WITH QEL LATCH RETRACTION

- 1 PROVIDE 5" X 5" X 2 7/8" DEEP JUNCTION BOX WITH BLANK COVER PLATE, SURFACE MOUNTED ABOVE DOOR, ABOVE ACCESSIBLE CEILING, ON SECURED SIDE OF DOOR.
- 2 STUB 1/2" CONDUIT INTO HEAD OF DOOR FRAME FOR CONCEALED DOOR POSITION SWITCH. SEE DETAIL 1 ON THIS PAGE.
- 3 PROVIDE 4" X 4" X 2 1/8" DEEP BOX WITH SINGLE GANG DEVICE RING FLUSH MOUNTED 3'-6" A.F.F. FOR CARD READER ON UNSECURED SIDE OF DOOR.
- 4 ELECTRIC POWER TRANSFER DEVICE, PROVIDED BY OTHERS.
- 5 PROVIDE 3/4" FLEXIBLE CONDUIT FROM ELECTRIC POWER TRANSFER DEVICE TO JUNCTION BOX.
- 6 VON DUPRIN ELECTRONIC PANIC BAR HARDWARE, PROVIDED BY OTHERS.
- 7 CABLE PATHWAY FOR ELECTRONIC PANIC BAR HARDWARE.

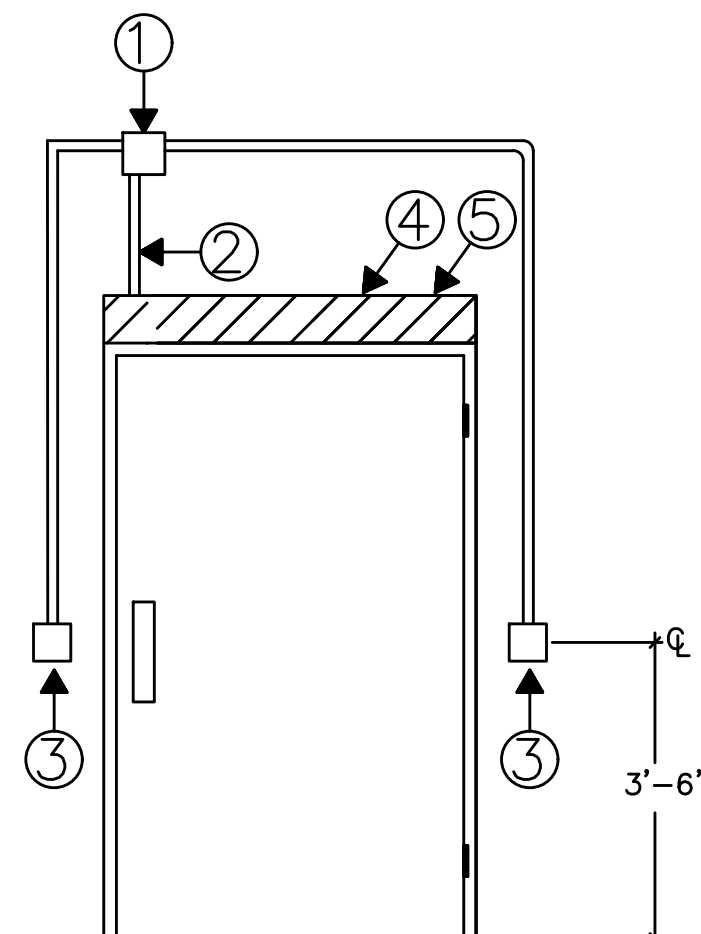
TYPICAL CONDUIT REQUIREMENTS EXTERIOR HANDICAP DOUBLE DOOR WITH ELECTRIC LATCH RETRACTION PANIC BAR HARDWARE, ELECTRIC TRANSFER DEVICE,CARD READER IN BOLLARD AND DOOR POSITION CONTACTS



SINGLE DOOR WITH QEL LATCH RETRACTION

- 1 PROVIDE 5" X 5" X 2 7/8" DEEP JUNCTION BOX WITH BLANK COVER PLATE, SURFACE MOUNTED ABOVE DOOR, ABOVE ACCESSIBLE CEILING, ON SECURED SIDE OF DOOR.
- 2 STUB 1/2" CONDUIT INTO HEAD OF DOOR FRAME FOR CONCEALED DOOR POSITION SWITCH. SEE DETAIL 1 ON THIS PAGE.
- 3 PROVIDE 4" X 4" X 2 1/8" DEEP BOX WITH SINGLE GANG DEVICE RING FLUSH MOUNTED 3'-6" A.F.F. FOR CARD READER ON UNSECURED SIDE OF DOOR.
- 4 ELECTRIC POWER TRANSFER DEVICE, PROVIDED BY OTHERS.
- 5 PROVIDE 3/4" FLEXIBLE CONDUIT FROM ELECTRIC POWER TRANSFER DEVICE TO JUNCTION BOX.
- 6 VON DUPRIN ELECTRONIC PANIC BAR HARDWARE, PROVIDED BY OTHERS.
- 7 CABLE PATHWAY FOR ELECTRONIC PANIC BAR HARDWARE.

5 TYPICAL CONDUIT REQUIREMENTS INTERIOR SINGLE DOOR WITH ELECTRIFIED OUTSIDE TRIM PANIC BAR HARDWARE, ELECTRIC TRANSFER DEVICE,CARD READER AND DOOR POSITION CONTACT



DOORS WITH AUTO OPENER

- 1 PROVIDE 5" X 5" X 2 7/8" DEEP JUNCTION BOX WITH BLANK COVER PLATE, SURFACE MOUNTED ABOVE DOOR, ABOVE ACCESSIBLE CEILING, ON SECURE SIDE OF DOOR.
- 2 PROVIDE CONDUIT INTO AUTOMATIC DOOR OPENER FOR LOW VOLTAGE CONNECTIONS
- 3 PROVIDE 3/4" CONDUIT AND 4" X 4" X 2 1/8" DEEP BOX WITH SINGLE GANG DEVICE RING FLUSH MOUNTED 3'-6" A.F.F. FOR HAND WAVE SENSOR.
- 4 RECORD DOOR OPERATORS TO BE SUPPLIED AND INSTALLED BY LONG ISLAND AUTOMATIC DOORS 85 SOUTH TERMINAL DRIVE, PLAINVIEW, NY 11803. PHONE: 516-931-2273. SALES FAX: 516-575-0041. ATTN: ANDREW CARR. EMAIL: andrewc@locksmith.com.
- 5 1 -120VAC BREAKER REQUIRED FOR DOOR OPENER.

6 TYPICAL CONDUIT REQUIREMENTS DOOR WITH AUTOMATIC OPENER, IN AND OUT HAND WAVE SENSORS.

TO THE BEST OF MY KNOWLEDGE, BELIEF AND PROFESSIONAL JUDGMENT, THESE PLANS AND SPECIFICATIONS ARE IN COMPLIANCE WITH THE 2020 ENERGY CONSERVATION CODE OF NYS

This plan is approved only for work indicated on the application specification sheet. All other matters shown are not to be relied upon, or to be considered as either being approved or in accordance with applicable codes.

Alterations or additions to this engineering document by an unlicensed person is a violation of Chapter 16, Title VIII, Article 145 § 7209.2 of the New York State Education Law.