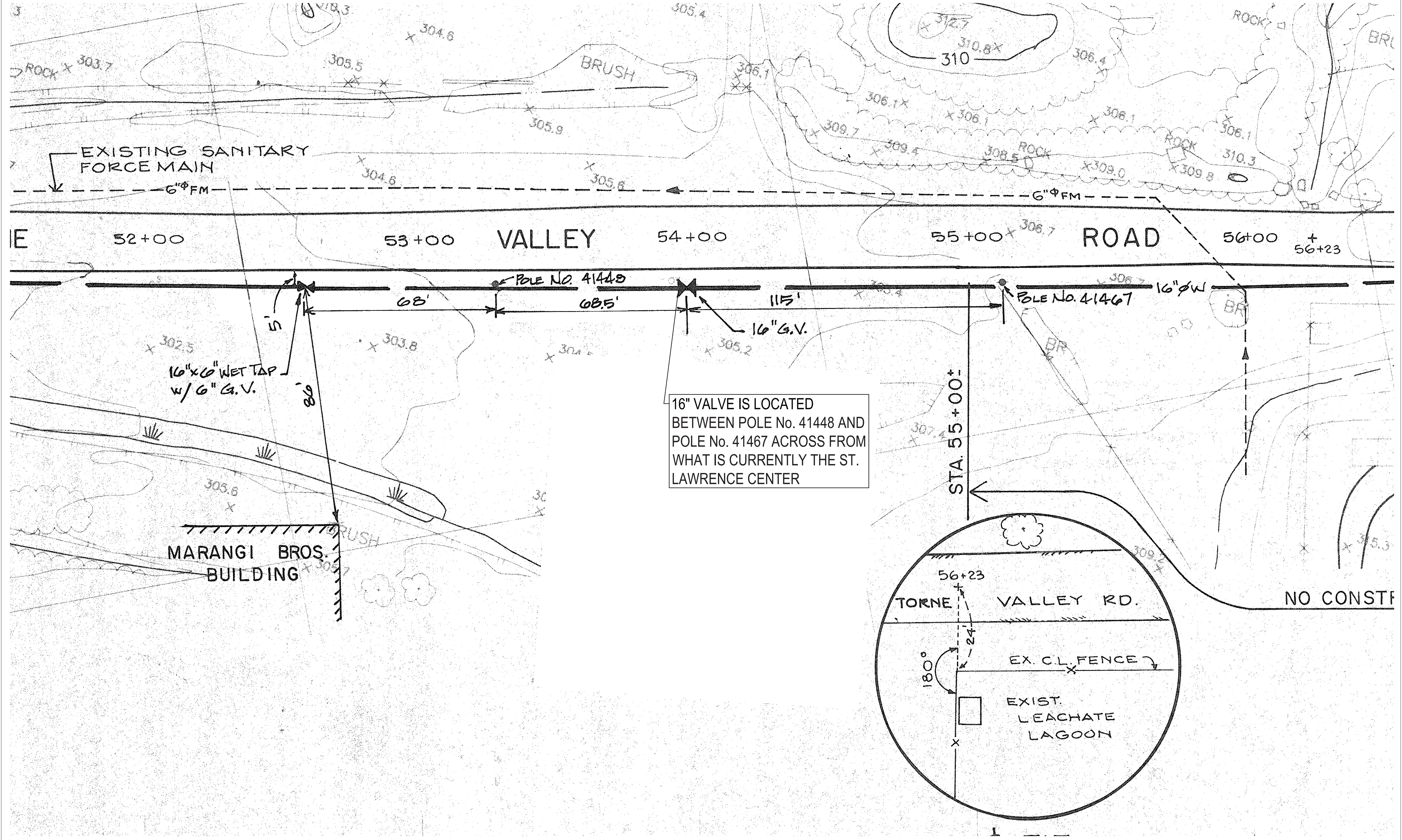


1/3/2008 Rockland GreenCatWorking DrawingsBooster Pump StationUTILITY LOCATION.dwg
Date Printed: 10/26/2022 3:56:38 PM
©2022 Environmental Design & Research, Landscape Architecture, Engineering, & Environmental Services, D.P.C.
The following is paraphrased from the New York Education Law, Article 145, Section 7209, and Chapter II, Section 79-1.4, and applies to this drawing: "It is a violation of this law for any person unless he is acting under the direction of a licensed professional engineer, licensed landscape architect or licensed land surveyor to alter an item in any way, if an item bearing the seal of an engineer, landscape architect or land surveyor is altered, the altering engineer, landscape architect or land surveyor shall affix to the item his seal and the notation "altered by" followed by his signature and the date of such alteration and a specific description of the alteration".



PROJECT TITLE: RFQ-2022-12 - BOOSTER PUMP STATION FACILITY UPGRADES		DRAWINGS ISSUED FOR / REVISIONS					EDR JOB#: 20098	
		NO.	DATE	ISSUED FOR / REVISION	BY	CHK	APP	DATE: SEPTEMBER 2022
PROJECT LOCATION: HILLBURN, NY		1	10/17/2022	FOR CONSTRUCTION	JTW	JHH	JHH	SCALE: AS NOTED
CLIENT: ROCKLAND GREEN		2	10/26/2022	PER BID ADDENDUM No. 01	JTW	JHH	JHH	DRAWN BY: JTW
DRAWING TITLE: EXISTING 16" DIAMETER ISOLATION VALVE IN ROADWAY PRIOR TO THE BOOSTER PUMP STATION		3						CHECKED BY: JHH
		4						DRAWING NUMBER:
		5						G-02
		6						