

RFQ# 2022-12
Request for Quotes
For the
Booster Pump Station Facility Upgrades

Addendum No. 1

Issued on October 27, 2022

Part 1 – Clarification Questions and Responses

The following sets forth the clarification questions submitted by potential Bidder(s) in response to the issuance of 'RFQ-2022-12' Booster Pump Station Facility Upgrades issued on October 19, 2022 (the "RFQ") and the responses of Rockland Green.

1. **Question:** In bid item A-1, Are we piping the air relief valve vent somewhere or just leaving it open?

Response: The new air relief valve shall be connected to the existing vent piping. All connections shall take place within the existing manhole structure.

2. **Question:** In bid item A-3, Calls for 4" steel pipe. is that schedule 40 or schedule 80 carbon steel? Or should it be ductile iron? Calls for (3) ½" stainless steel ball valves. Not sure what they are for?

Response: All pipe shall be ductile iron pipe, double cement lined and coated, that meets the standards for potable water with a minimum pressure rating of 250 psi. The stainless steel ball valves and piping are to be installed in conjunction with the replacement of the pressure gauge and appurtenances.

3. **Question:** In bid item A-4, spec calls for all new 316 SS pipe and fittings, drawing shows galvanized pipe. which is it?

Response: All new piping, valves, fittings, and appurtenance shall be 304 stainless steel. The existing vent line that shall be reused is galvanized. Contractor shall provide a dielectric fitting to prevent galvanic corrosion from dissimilar metals between the new and existing piping.

4. **Question:** In bid item A-5, is there a spec for the contractor furnished gate valves? Is it the same as the specified valve in A-3?

Response: In the lump sum items section there are specific ANSI and AWWA requirements that the valve must meet. The valve shall be intended for potable water and meet all requirements for potable water systems.

5. **Question:** How long is the water allowed to be shut off?

Response: The water must be restored at the end of each day and will be allowed to be taken offline the following morning. Due to multiple facilities relying on the booster pump station for fire protection, the water cannot be taken offline when the facilities are not being operated.

6. **Question:** Do the valves and fittings need to be painted after installation?

Response: The valves, and fittings shall be coated with a factory coating. Rockland Green will have the components painted under a separate contract.

7. **Question:** What is the pressure class of the pipe and fittings?

Response: The minimum pressure class for the pipes and fittings shall be a minimum of 250 psi.

Part 2 – Corrections and Modifications to the RFB

The following sets forth modifications and corrections to the issuance of 'RFQ-2022-12' Booster Pump Station Facility Upgrades issued on October 26, 2022. Please note that additions to the identified provision of the RFQ will be reflected as bold, underlined text and deletions will be reflected as stricken text.

1. **DELETE the following drawings:**

- Drawing C-01 – Mechanical Upgrades
- Drawing C-01 – Mechanical Upgrades – Details

Replace them with the following Drawings Revised 10/26/2022:

Drawing C-01 – Mechanical Upgrades

Drawing C-02 – Mechanical Upgrades - Details

2. **DELETE** the PRICE QUOTATION FORM and replace it with the **“PRICE QUOTATION FORM – REVISED”**
3. **DELETE** the Section 01026 – LUMP SUM ITEMS (BID ITEM DESCRIPTIONS) and replace with the revised **“Section 01026 – LUMP SUMP ITEMS (BID ITEM DESCRIPTIONS) - Revised”**

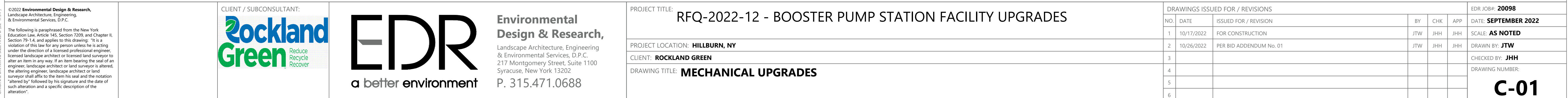
- The revised section 01026 includes added bid items No. A-7 and No. A-8
4. **ADD** drawing G-02 showing the location of the 16" gate valve located in Torne Valley Road between utility pole No. 41448 and No. 41467.

Part 3 – Changes in the Procurement Schedule

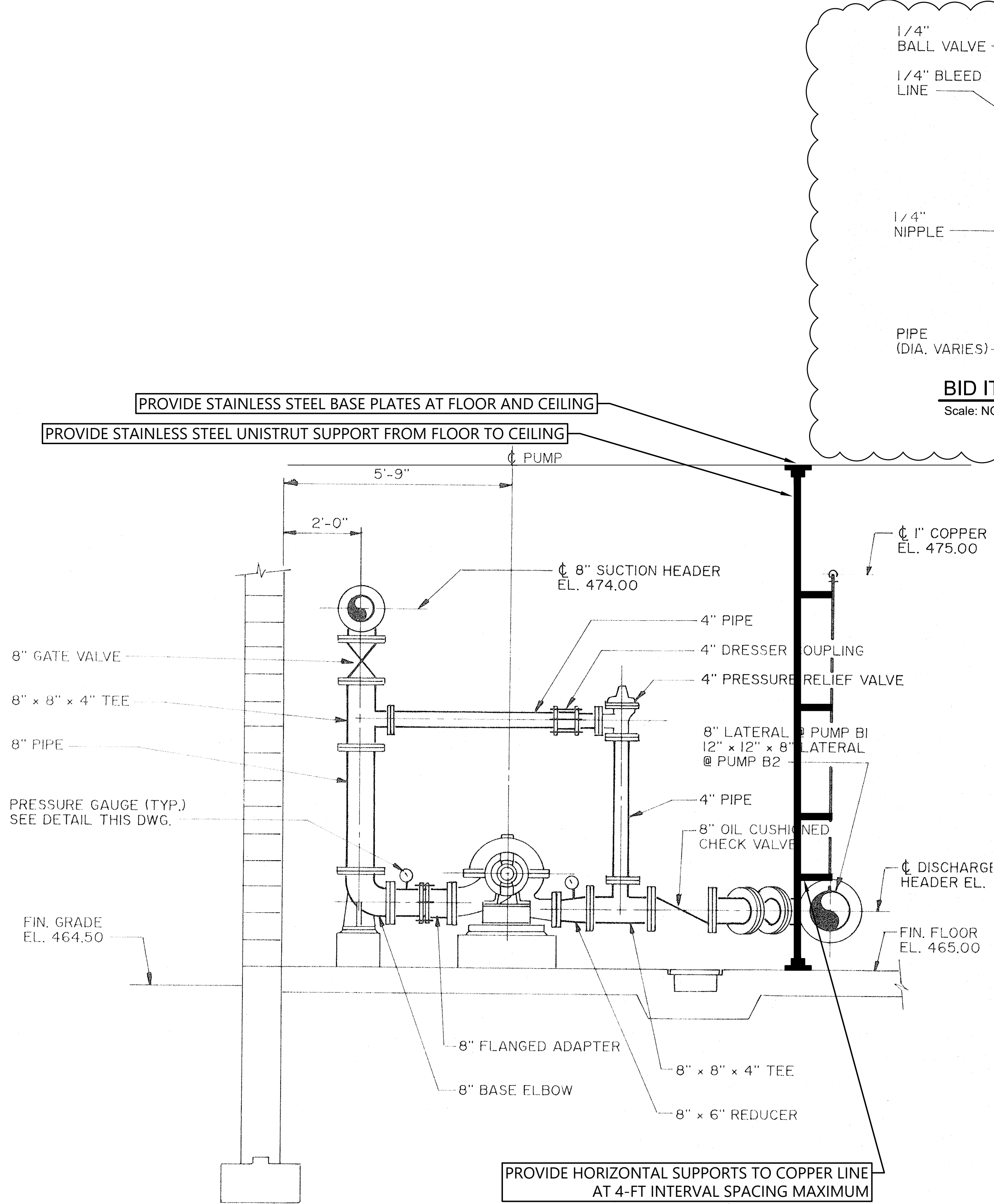
Procurement Schedule

RFQ – 2022 – 12

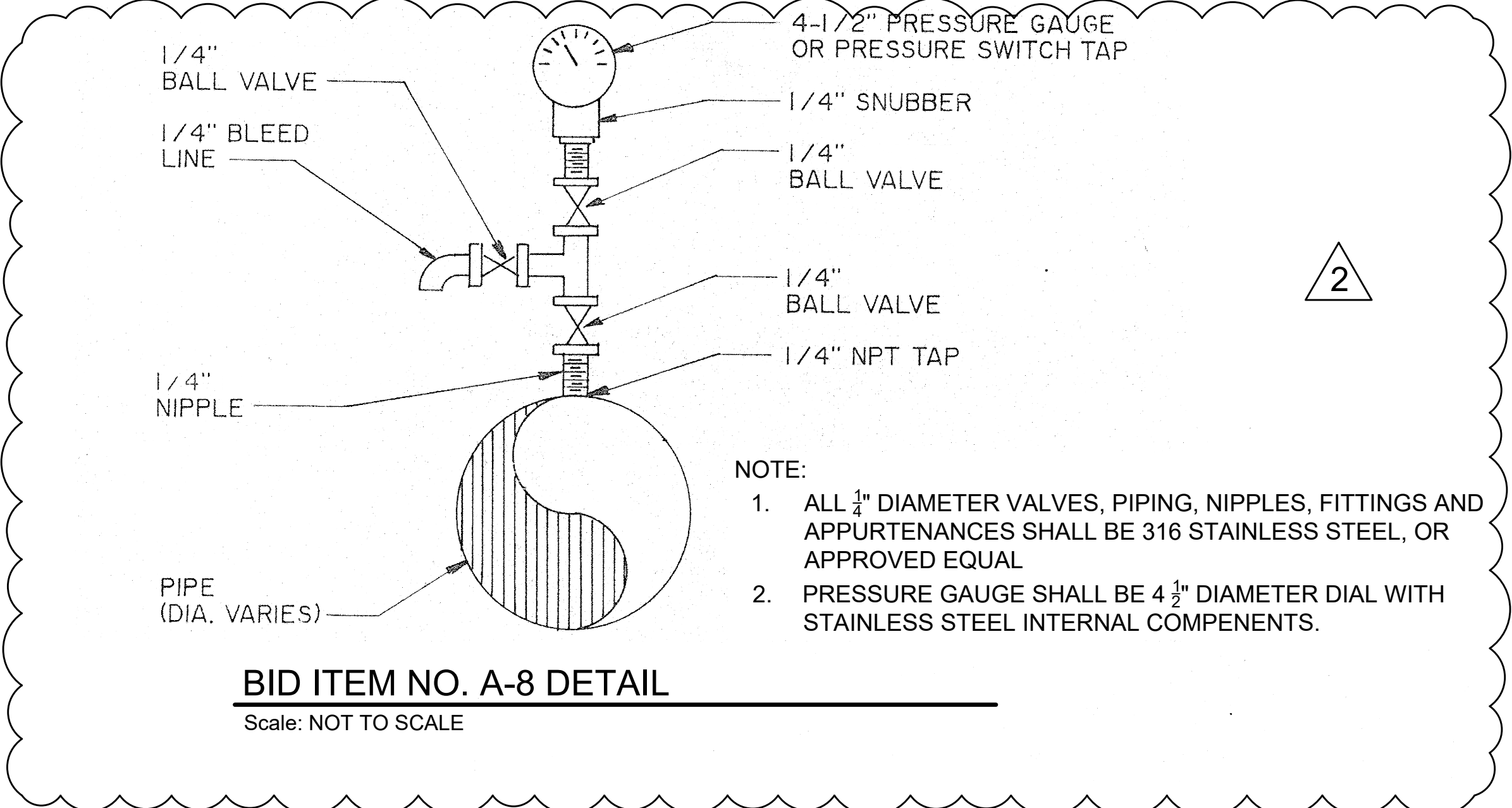
Availability of RFQ	Wednesday October 19, 2022
Mandatory Site Visit	Monday, October 24, 2022 @9:30am 300 Torne Valley Rd, Hillburn, NY 10931
Deadline for Receipt of Quotes	Friday October 28, 2022 @ 2pm Wednesday November 2, 2022 @ 2pm
Selection of Contractor	Friday October 28, 2022 Thursday November 3, 2022



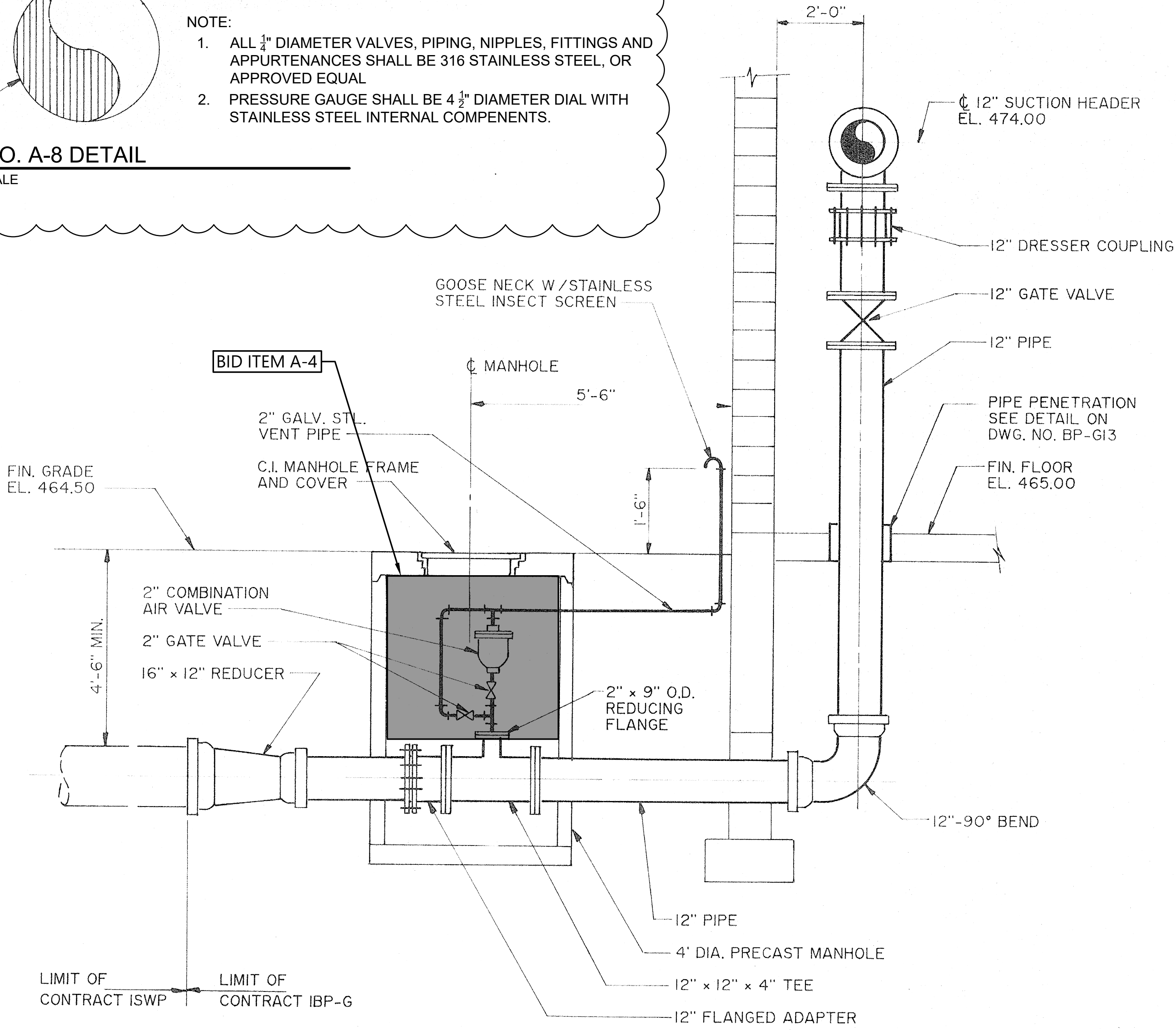
1/3/2008 Rockland GreenCatWorking DrawingsBooster Pump StationBooster Pump Layout.dwg
Date Printed: 10/26/2022 8:25:05 PM
ORIGINAL DRAWING SIZE: ANSI D (24" x 36")



BID ITEM NO. A-6 DETAIL
Scale: NOT TO SCALE



BID ITEM NO. A-8 DETAIL
Scale: NOT TO SCALE



BID ITEM NO. A-4 DETAIL
Scale: NOT TO SCALE

©2022 Environmental Design & Research, Landscape Architecture, Engineering, & Environmental Services, D.P.C.
The following is paraphrased from the New York Education Law, Article 145, Section 7209, and Chapter II, Section 79-1.4, and applies to this drawing: "It is a violation of this law for any person unless he is acting under the direction of a licensed professional engineer, licensed landscape architect or licensed land surveyor to alter an item in any way, if an item bearing the seal of an engineer, landscape architect or land surveyor is altered, the altering engineer, landscape architect or land surveyor shall affix to the item his seal and the notation 'altered by' followed by his signature and the date of such alteration and a specific description of the alteration."

CLIENT / SUBCONSULTANT:
Rockland Green
Reduce
Recycle
Recover

EDR
a better environment

Environmental Design & Research,
Landscape Architecture, Engineering
& Environmental Services, D.P.C.
217 Montgomery Street, Suite 1100
Syracuse, New York 13202
P. 315.471.0688

PROJECT TITLE: RFQ-2022-12 - BOOSTER PUMP STATION FACILITY UPGRADES
PROJECT LOCATION: HILLBURN, NY
CLIENT: ROCKLAND GREEN
DRAWING TITLE: MECHANICAL UPGRADES - DETIALS

DRAWINGS ISSUED FOR / REVISIONS				BY			APP	EDR JOB#: 20098	
NO.	DATE	ISSUED FOR / REVISION		JTW	JHH	JHH		DATE: SEPTEMBER 2022	SCALE: AS NOTED
1	10/17/2022	FOR CONSTRUCTION		JTW	JHH	JHH		DRAWN BY: JTJW	CHECKED BY: JHH
2	10/26/2022	PER BID ADDENDUM No. 01		JTW	JHH	JHH		DRAWING NUMBER:	
3									
4									
5									
6									

C-02

SECTION 01026

LUMP SUM ITEMS (BID ITEM DESCRIPTIONS) - Revised

RFQ-2022-12 – Booster Pump Station Facility Upgrades

PART 1 GENERAL

1.01. SECTION INCLUDES

- A. Price basis.
- B. Elements of Bid Item Description page.
- C. Lump sum item list.
- D. Bid Item Descriptions.

1.02. PRICE BASIS

- A. Lump sum prices bid by Contractor are deemed to be full compensation for all required labor, products, tools, equipment, plant, transportation, testing, inspection, services, incidentals, administrative, procedures, applicable taxes, permit fees, overhead, profit, and other miscellaneous expenses.

1.03. ELEMENTS OF BID ITEM DESCRIPTION PAGE

- A. Identification of lump sum item, as set forth in the Bid Form.
- B. Statement of work involved in the item.
- C. Listing of components of work which make-up the item including reference to the section(s) covering each component.
- D. Cross-references to associated work not included in the item.

1.04. LUMP SUM ITEMS - CONTRACT 1

Bid Item No.	Bid Item Description
A-1	Furnish and Install New 12-inch Diameter 4-Way Cross fitting and Air Relief Valve, Complete
A-2	Furnish and Install New 8-inch Diameter 45-degree Elbow Fitting, Complete
A-3	Furnish and Install New 4-inch Diameter Pipe and Gate Valve at the Existing Expansion Tank, Complete
A-4	Furnish and Install New Air Relief Valve in Existing Precast Manhole Structure, Complete
A-5	Furnish One and Install Two 8-inch Diameter Gate Valves, and Furnish and Install One 12-inch Diameter Gate Valve, Complete
A-6	Complete Modifications to the ½-inch Copper Tubing Serving the Existing Pressure Switches, Complete
<u>A-7</u>	<u>Furnish and Install New Hydropneumatic Tank level Sensor with Sensing Probes and Electrical Connections, Complete</u>
<u>A-8</u>	<u>Furnish and Install New Spool Piece and Pressure Gauge for the Inlet Piping on Fire Pump B-2, Complete</u>

1.06 BID ITEM DESCRIPTIONS

- A. Bid Item Description pages identified above are attached at the end of this section.

PART 2 PRODUCTS

Not used.

PART 3 EXECUTION

Not used.

(continued)

FURNISH AND INSTALL NEW 12-INCH DIAMETER 4-WAY CROSS FITTING AND AIR RELIEF VALVE,
COMPLETE

- A. DESCRIPTION Under this item, Contractor shall provide all labor, materials, and equipment (rented and owned) necessary to complete the removal of the existing 12" diameter ductile iron tee fitting and installation of a new 12" diameter 4-way cross ductile iron fitting, rated for public water use with a double cement lining or approved equal, complete with hardware, gaskets, tie rods, and touch up paint. Work shall include providing and installing a stainless-steel blind flange, stainless steel nipple, and stainless-steel air release valve on top of the new 4-way cross fitting. Fitting shall be painted to match existing color of water piping. All in accordance with the Terms and Conditions of the Agreement with Rockland Green and the Contract Drawings.
- B. WORK INCLUDED UNDER THIS ITEM
- Mobilization
 - Demobilization
 - All materials must be submitted and approved prior to installation. All materials in contact with the potable water must be rated for potable water use and meet the following requirements
 - ANSI A21.4/AWWA C104
 - ANSI A21.10/AWWA C110,
 - ANSI A21.11/AWWA C111
 - ANSI A21.50/AWWA C150
 - ANSI A21.51/AWWA C151
 - AWWA C600 & ASTM A126
 - Temporary Set-up and removal of rigging equipment for demolition and installation work
 - Remove existing 12" diameter ductile iron tee and hardware, gaskets, and appurtenances
 - Replace with new 12" diameter ductile iron 4-way cross fitting
 - Furnish and install new gaskets, new Tie-Rods, and all appurtenances for a complete replacement
 - Furnish and install a new 12" stainless steel blind flange on top of 4-way fitting
 - Furnish and install a 1" stainless steel thread-o-let, a 1" 316L stainless steel nipple, and a Model 920 Cast Iron body stainless steel float air relief valve.
- C. ASSOCIATED WORK NOT INCLUDED UNDER THIS ITEM All Other Bid Items
- D. METHOD OF PAYMENT Measurement shall be based on the completion of all activities including labor, equipment, and materials necessary to complete specified construction work. All material must be approved by the engineer prior to any payment. Payment for stored materials shall include backup for proof of purchase and must have been delivered to the site.

FURNISH AND INSTALL NEW 8-INCH DIAMETER 45 - DEGREE ELBOW FITTING, COMPLETE

- A. DESCRIPTION Under this item, Contractor shall provide all labor, materials, and equipment (rented and owned) necessary to complete the removal of the existing 8" diameter 45 degree fitting and provide and install a new 8" diameter 45 degree fitting, ductile iron rated for public water use with a double cement lining or approved equal. All in accordance with the Terms and Conditions of the Agreement with Rockland Green and the Contract Drawings.
- B. WORK INCLUDED UNDER THIS ITEM
- Mobilization
 - Demobilization
 - All materials must be submitted and approved prior to installation. All materials in contact with the potable water must be rated for potable water use and meet the following requirements
 - ANSI A21.4/AWWA C104
 - ANSI A21.10/AWWA C110,
 - ANSI A21.11/AWWA C111
 - ANSI A21.50/AWWA C150
 - ANSI A21.51/AWWA C151
 - AWWA C600 & ASTM A126
 - Installation of supports, rigging and/or shoring needed for the removal and installation of the new fitting, complete
 - remove existing 8" diameter ductile iron 45-degree fitting and hardware, gaskets, and appurtenances
 - replace with new 8" diameter ductile iron 45-degree fitting
 - install new gaskets and hardware & provide and install new Threaded Rods restraints, and all appurtenances for a complete replacement.
- C. ASSOCIATED WORK NOT INCLUDED UNDER THIS ITEM All work associated with remaining lump sum, unit price and add alternate bid items.
- D. METHOD OF PAYMENT Measurement shall be based on the completion of all activities including labor, equipment, and materials necessary to complete specified construction work. Payment for stored materials shall include backup for proof of purchase and must have been delivered to the site.

FURNISH AND INSTALL NEW 4-INCH DIAMETER PIPE AND GATE VALVE AT THE EXISTING EXPANSION
TANK, COMPLETE

- A. DESCRIPTION Under this item, Contractor shall provide all labor, materials, and equipment (rented and owned) necessary to complete the removal of the existing 4" diameter pipe and removal of existing valve, provide and install new spool piece complete with weld on flanges, pressure gauges, flanged gate valve, and gauge assemblies and appurtenances for a complete assembly. All in accordance with the Terms and Conditions of the Agreement with Rockland Green and the Contract Drawings.
- B. WORK INCLUDED UNDER THIS ITEM
- Mobilization
 - Demobilization
 - All materials must be submitted and approved prior to installation. All materials in contact with the potable water must be rated for potable water use and meet the following requirements
 - ANSI A21.4/AWWA C104
 - ANSI A21.10/AWWA C110,
 - ANSI A21.11/AWWA C111
 - ANSI A21.50/AWWA C150
 - ANSI A21.51/AWWA C151
 - AWWA C600 & ASTM A126
 - Furnish and install new 4" ductile iron pipe (32 1/16" in length), with 4" 350# slip-on flanges at each end, rated for potable water.
 - Furnish and install a 1/2" coupling to center of pipe, install a 0-200 PSI pressure reading, bottom mount 4 1/2" face pressure gauge with 1/2" 304L SS piping, 0.5 psi increments with an accuracy grade 3A 0.25%, complete
 - Furnish and install three stainless steel 1/2" ball valves (quarter-turn)
 - Remove existing 4" pipe from base of existing water tank and existing gate valve
 - Furnish and install new Matco Model 225W11, 4" 350 # Flanges gate valve, ductile iron rated for potable water, non-rising stem, hand-wheel, NSF-61, /NSF-372, AWWA C515-15, with new gaskets, hardware, and appurtenances
 - Furnish and install new fabricated gauge assembly and any ductile iron spool piece, double cement lined as needed for a complete assembly. All piping, valves and gauges shall be rated for potable water.
- C. ASSOCIATED WORK NOT INCLUDED UNDER THIS ITEM All work associated with remaining lump sum, unit price and add alternate bid items.
- D. METHOD OF PAYMENT Measurement shall be based on the completion of all activities including labor, equipment, and materials necessary to complete specified construction work. Payment for stored materials shall include backup for proof of purchase and must have been delivered to the site.

FURNISH AND INSTALL NEW AIR RELIEF VALVE IN EXISTING PRECAST MANHOLE STRUCTURE, COMPLETE

- | | |
|--------------------------------------------------------|-------------------------------------------------------------------------------------------------------------------------------------------------------------------------------------------------------------------------------------------------------------------------------------------------------------------------------------------------------------------------------------------------------------------------------------------------------------------------------------------------------------------------------------------------------------------------------------------------------------------------------------------------------------------------------------------------------------------------------------------------------------------------------------------------------------------------------------------------------------------------------------------------------------------------------------------------------------------------------------------------------------------------------------------------------------------------------------------------------------------------------------------------------------------------|
| A. <u>DESCRIPTION</u> | Under this item, Contractor shall provide all labor, materials, and equipment (rented and owned) necessary to complete the installation of a new air relief valve in the manhole structure outside the booster pump station, complete with connecting piping, valves, and materials for a complete system. All in accordance with the Terms and Conditions of the Agreement with Rockland Green and the Contract Drawings. |
| B. <u>WORK INCLUDED UNDER THIS ITEM</u> | <ul style="list-style-type: none"> • Mobilization • Demobilization • All materials must be submitted and approved prior to installation. All materials in contact with the potable water must be rated for potable water use and meet the following requirements <ul style="list-style-type: none"> ○ ANSI A21.4/AWWA C104 ○ ANSI A21.10/AWWA C110, ○ ANSI A21.11/AWWA C111 ○ ANSI A21.50/AWWA C150 ○ ANSI A21.51/AWWA C151 ○ AWWA C600 & ASTM A126 • Remove existing air relief valve, clean piping, install new Golden Anderson Model 945-T single Body Combination Air Valve, dual chamber cast iron body/cover, 316 S.S. floats and linkage, Buna N seat, 2" NPT inlet and outlet, • Connect 2" interconnecting piping to include all stainless steel 2" Tees, 2" unions, nipples 90-degree elbows and two 2" NPT 316 stainless steel ball valves to piping. • Furnish and install inlet compression fitting. Materials on pipe fitting shall be black pipe, fitting to bulkhead with 2" compression coupling. |
| C. <u>ASSOCIATED WORK NOT INCLUDED UNDER THIS ITEM</u> | All work associated with remaining lump sum, unit price and add alternate bid items. |
| D. <u>METHOD OF PAYMENT</u> | Measurement shall be based on the completion of all activities including labor, equipment, and materials necessary to complete specified construction work. Payment for stored materials shall include backup for proof of purchase and must have been delivered to the site. |

FURNISH ONE AND INSTALL TWO 8-INCH DIAMETER GATE VALVES, AND FURNISH AND INSTALL ONE 12-INCH DIAMETER GATE VALVE, COMPLETE

- A. DESCRIPTION Under this item, Contractor shall provide all labor, materials, and equipment (rented and owned) necessary to complete the supply, installation, and testing of one 8" diameter gate valve rated for potable water, one 12" diameter gate valve rated for potable water and the installation and testing of one existing 8" gate valve currently being stored at the booster pump station. All in accordance with the Terms and Conditions of the Agreement with Rockland Green and the Contract Drawings.
- B. WORK INCLUDED UNDER THIS ITEM
- Mobilization
 - Demobilization
 - All materials must be submitted and approved prior to installation. All materials in contact with the potable water must be rated for potable water use and meet the following requirements
 - ANSI A21.4/AWWA C104
 - ANSI A21.10/AWWA C110,
 - ANSI A21.11/AWWA C111
 - ANSI A21.50/AWWA C150
 - ANSI A21.51/AWWA C151
 - AWWA C600 & ASTM A126
 - Furnish the labor, material and equipment required to remove the existing 8" diameter gate valves and one 12" diameter gate valve including all rigging, temporary supports, dewatering, and appurtenances for a complete removal.
 - Furnish the labor, material and equipment required to install one 8" diameter gate valve provided by OWNER, one 8" diameter gate valve provided by contractor, and one 12" diameter gate valve provided by contractor. Installation includes all gaskets, mounting hardware, threaded rod supports, pipe supports, joint restraints, painting, and appurtenances for a complete installation.
 - Furnish and install all rigging, equipment, temporary supports, and specialty tools and equipment for the successful removal of the existing valves and installation of the new valves.
- C. ASSOCIATED WORK NOT INCLUDED UNDER THIS ITEM All work associated with remaining lump sum, unit price and add alternate bid items.
- D. METHOD OF PAYMENT Measurement shall be based on the completion of all activities including labor, equipment, and materials necessary to complete specified construction work. Payment for stored materials shall include backup for proof of purchase and must have been delivered to the site.

COMPLETE MODIFICATIONS TO THE 1/2-INCH COPPER TUBING SERVING THE EXISTING PRESSURE SWITCHES, COMPLETE

- A. DESCRIPTION Under this item, Contractor shall provide all labor, materials, and equipment (rented and owned) necessary to complete the modifications to the existing 1/2" copper tubing for the pressure switches which control the "B" pumps at the booster pump station. All in accordance with the Terms and Conditions of the Agreement with Rockland Green and the Contract Drawings.
- B. WORK INCLUDED UNDER THIS ITEM
- Mobilization
 - Demobilization
 - All materials must be submitted and approved prior to installation. All materials in contact with the potable water must be rated for potable water use and meet the following requirements
 - ANSI A21.4/AWWA C104
 - ANSI A21.10/AWWA C110,
 - ANSI A21.11/AWWA C111
 - ANSI A21.50/AWWA C150
 - ANSI A21.51/AWWA C151
 - AWWA C600 & ASTM A126
 - Furnish the labor, material and equipment required to remove the a 90-degree elbow and tubing to facilitate the installation of a "TEE" section and continuation of the 1/2-inch copper tubing.
 - Furnish the labor, material and equipment required to install one copper "TEE" fitting, 90-degree fitting, 1/2-inch copper tubing and a ball valve to extend the tubing down to the operator's level.
 - Furnish all rigging, equipment, temporary supports, and specialty tools and equipment for the removal of the existing tubing and fittings, and the installation of the new tubing and fittings.
 - Furnish the labor, material, and equipment to fabricate and install a pipe support stand using stainless steel Unistrut, including all mounting hardware, connection fittings and appurtenances.
- C. ASSOCIATED WORK NOT INCLUDED UNDER THIS ITEM All work associated with remaining lump sum, unit price and add alternate bid items.
- D. METHOD OF PAYMENT Measurement shall be based on the completion of all activities including labor, equipment, and materials necessary to complete specified construction work. Payment for stored materials shall include backup for proof of purchase and must have been delivered to the site.

FURNISH AND INSTALL NEW HYDROPNEUMATIC TANK LEVEL SENSOR WITH SENSING ELECTRODES AND ELECTRICAL CONNECTIONS, COMPLETE

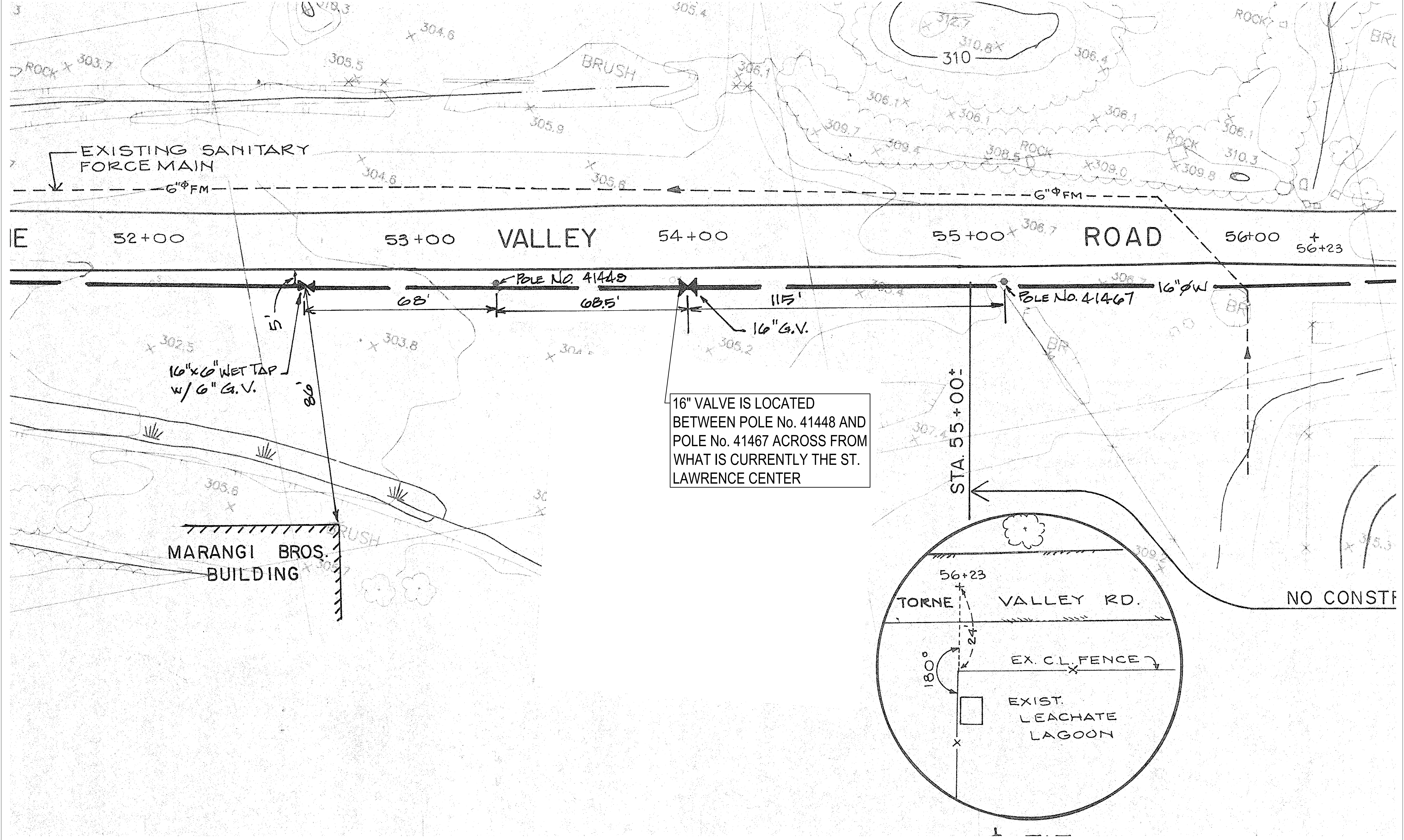
- A. DESCRIPTION Under this item, Contractor shall provide all labor, materials, and equipment (rented and owned) necessary to complete the supply, installation, and testing of one hydropneumatic tank level sensor complete with electrical connections to the existing power and control conductors. All in accordance with the Terms and Conditions of the Agreement with Rockland Green and the Contract Drawings.
- B. WORK INCLUDED UNDER THIS ITEM
- Mobilization
 - Demobilization
 - All materials must be submitted and approved prior to installation. All materials in contact with the potable water must be rated for potable water use and meet the following requirements
 - ANSI A21.4/AWWA C104
 - ANSI A21.10/AWWA C110,
 - ANSI A21.11/AWWA C111
 - ANSI A21.50/AWWA C150
 - ANSI A21.51/AWWA C151
 - AWWA C600 & ASTM A126
 - Furnish the labor and material required to remove the existing hydropneumatic tank level sensor, electrode holder and electrodes in the PVC pipe and electrical conduit. PVC Pipe and rigid conduit shall remain and be re-used for the new level sensing system.
 - Furnish the labor, material and equipment required to install **Warrick Model 3E4A** electrode holder, **Warrick Model 3W2** electrodes, and misc. conduit, connections and fittings for the hydropneumatic tank level sensor and connect to the existing conductors and electrical conduit and control wiring, complete including mounting hardware, fittings, connections and all appurtenances for a complete installation.
 - From as built drawings it appears that there are (4) four electrodes in the PVC pipe with varying lengths.
 - Contractor is responsible to field verify prior to shop drawing submittal, the quantity of electrodes and the length of electrodes that are to be replaced.
 - Furnish all rigging, equipment, temporary supports, and specialty tools and equipment for the removal of the existing level sensor and fittings, and the installation of the new level sensor and fittings.
- C. ASSOCIATED WORK NOT INCLUDED UNDER THIS ITEM All work associated with remaining lump sum, unit price and add alternate bid items.
- D. METHOD OF PAYMENT Measurement shall be based on the completion of all activities including labor, equipment, and materials necessary to complete specified construction work. Payment for stored materials shall include backup for proof of purchase and must have been delivered to the site.

FURNISH AND INSTALL NEW SPOOL PIECE AND PRESSURE GAUGE FOR THE INLET PIPING ON FIRE PUMP B-2, COMPLETE

- | | |
|--------------------------------------------------------|----------------------------------------------------------------------------------------------------------------------------------------------------------------------------------------------------------------------------------------------------------------------------------------------------------------------------------------------------------------------------------------------------------------------------------------------------------------------------------------------------------------------------------------------------------------------------------------------------------------------------------------------------------------------------------------------------------------------------------------------------------------------------------------------------------------------------------------------------------------------------------------------------------------------------------------------------------------------------------------------------------------------------------------------------------------------------------------------------------------------------------------------------------------------------------------------------------------------------------------------------------------------------------------------------------------------------------------------------------------------------------------------------------------------------------------------------------------------------------------------------------------------------------------------------------------------------------------------------------------------------------------------------------------------------------------------------------------------------------------------------------------------------|
| A. <u>DESCRIPTION</u> | Under this item, Contractor shall provide all labor, materials, and equipment (rented and owned) necessary to complete the supply, installation, and testing of one 8" diameter ductile iron spool piece between the 90-degree fitting on the main inlet header piping and the inlet to the fire pump B-2, complete with stainless steel piping and stainless steel ball valves, pressure gauge and all appurtenances. All in accordance with the Terms and Conditions of the Agreement with Rockland Green and the Contract Drawings. |
| B. <u>WORK INCLUDED UNDER THIS ITEM</u> | <ul style="list-style-type: none"> • Mobilization • Demobilization • All materials must be submitted and approved prior to installation. All materials in contact with the potable water must be rated for potable water use and meet the following requirements <ul style="list-style-type: none"> ○ ANSI A21.4/AWWA C104 ○ ANSI A21.10/AWWA C110, ○ ANSI A21.11/AWWA C111 ○ ANSI A21.50/AWWA C150 ○ ANSI A21.51/AWWA C151 ○ AWWA C600 & ASTM A126 • Furnish the labor, material and equipment required to remove the 8" diameter spool piece and threaded rod supports, complete. • Furnish the labor, material and equipment required to install new steel spool piece with 1/4" diameter tap for the pressure gauge, valves and piping, complete. • Furnish the labor, material and equipment required to install new 4-1/2" diameter, 1/4" NPT stainless steel pressure gauge, 1/4" diameter stainless steel ball valves, 1/4" diameter stainless steel pipe and fittings and all stainless-steel mounting hardware and appurtenances, complete. • Furnish all rigging, equipment, temporary supports, and specialty tools and equipment for the removal of the existing spool piece and gauges, and the installation of the new spool piece and gauges. • Pressure gauge shall have a 0 – 160 psi pressure reading range, 1.0 psi increments with an accuracy grade 3A 0.25%, with stainless steel internal components. • install new gaskets and hardware & provide and install new Stainless Steel Threaded Rods restraints, and all appurtenances for a complete replacement. |
| C. <u>ASSOCIATED WORK NOT INCLUDED UNDER THIS ITEM</u> | All work associated with remaining lump sum, unit price and add alternate bid items. |
| D. <u>METHOD OF PAYMENT</u> | Measurement shall be based on the completion of all activities including labor, equipment, and materials necessary to complete specified construction work. Payment for stored materials shall include backup for proof of purchase and must have been delivered to the site. |

END OF SECTION

1/20088 Rockland GreenCatWorking DrawingsBooster Pump StationUTILITY LOCATION.dwg
Date Printed: 10/26/2022 3:56:38 PM
©2022 Environmental Design & Research, Landscape Architecture, Engineering, & Environmental Services, D.P.C.
The following is paraphrased from the New York Education Law, Article 145, Section 7209, and Chapter II, Section 79-1.4, and applies to this drawing: "It is a violation of this law for any person unless he is acting under the direction of a licensed professional engineer, licensed landscape architect or licensed land surveyor to alter an item in any way, if an item bearing the seal of an engineer, landscape architect or land surveyor is altered, the altering engineer, landscape architect or land surveyor shall affix to the item his seal and the notation "altered by" followed by his signature and the date of such alteration and a specific description of the alteration".



16" VALVE IS LOCATED BETWEEN POLE No. 41448 AND POLE No. 41467 ACROSS FROM WHAT IS CURRENTLY THE ST. LAWRENCE CENTER

PROJECT TITLE: RFQ-2022-12 - BOOSTER PUMP STATION FACILITY UPGRADES				DRAWINGS ISSUED FOR / REVISIONS				EDR JOB#: 20098	
PROJECT LOCATION: HILLBURN, NY				NO.	DATE	ISSUED FOR / REVISION	BY	CHK	APP
CLIENT: ROCKLAND GREEN				1	10/17/2022	FOR CONSTRUCTION	JTW	JHH	JHH
DRAWING TITLE: EXISTING 16" DIAMETER ISOLATION VALVE IN ROADWAY PRIOR TO THE BOOSTER PUMP STATION				2	10/26/2022	PER BID ADDENDUM No. 01	JTW	JHH	JHH
				3					
				4					
				5					
				6					
								CHECKED BY: JHH	
								DRAWING NUMBER: G-02	

CLIENT / SUBCONSULTANT:



Environmental Design & Research,

Landscape Architecture, Engineering & Environmental Services, D.P.C.
217 Montgomery Street, Suite 1100
Syracuse, New York 13202
P. 315.471.0688

PRICE QUOTATION FORM – Revision 01

RFQ-2022-12 – Booster Pump Station Facility Upgrades

Proposer shall perform the Work in accordance with the Contract Documents for the prices shown in the Price Proposal Summary shown below.

Proposer acknowledges that Proposer's price(s) constitute Proposer's sole compensation for performing all Work required by the Contract Documents, and if a particular part of the Work is not listed specifically in the Price Quote Summary set forth below in Schedule A of this section, Proposer shall include that part of the Work in the Cost Item Description which it most logically belongs.

Schedule A: Lump Sum Cost Items:

Lump sum items include all Work in the Contract Documents, except items specifically identified as Unit Price Work.

Measurement and payment of Lump Sum Cost Items is defined in Section 01026, Lump Sum Items, of the Technical Specifications (if applicable) and Rockland Green's Contract Terms and Conditions.

Lump Sum Cost Items Table:

<u>Item No.</u>	<u>Estimated Quantity</u>	<u>Units</u>	<u>Description</u>	<u>Total Item Price (Figures in Dollars and Cents)</u>
A-1	1	LS	Furnish and Install New 12-inch Diameter 4-Way Cross fitting and Air Relief Valve, Complete: (See description of work included in specification section 01026)	
A-2	1	LS	Furnish and Install New 8-inch Diameter 45 - degree Elbow Fitting, Complete (See description of work included in specification section 01026)	
A-3	1	LS	Furnish and Install New 4-inch Diameter Pipe and Gate Valve at the Existing Expansion Tank, Complete (See description of work included in specification section 01026)	
A-4	1	LS	Furnish and Install New Air Relief Valve in Existing Precast Manhole Structure, Complete (See description of work included in specification section 01026)	

A-5	1	LS	Furnish One and Install Two 8-inch Diameter Gate Valves, and Furnish and Install One 12-inch Diameter Gate Valve, Complete (See description of work included in specification section 01026)	
A-6	1	LS	Complete Modifications to the ½-inch Copper Tubing Serving the Existing Pressure Switches, Complete (See description of work included in specification section 01026)	
<u>A-7</u>	<u>1</u>	<u>LS</u>	<u>Furnish and Install New Hydropneumatic Tank level Sensor with Sensing Electrodes and Electrical Connections, Complete</u> (See description of work included in specification section 01026)	
<u>A-8</u>	<u>1</u>	<u>LS</u>	<u>Furnish and Install New Spool Piece and Pressure Gauge for the Inlet Piping on Fire Pump B-2, Complete</u> (See description of work included in specification section 01026)	

Schedule B: Total Proposal Price:

Determination of the Total Proposal Price will be determined as follows.

- a. All mathematical errors will be corrected. In case of a discrepancy between unit prices and extended totals, unit prices will govern. In case of discrepancy between the correct sum of individual bid items and the (incorrectly) calculated sum, the correct sum of individual cost items will govern.

Proposer shall complete the shaded Total Proposed Price section in Schedule B. The shaded areas are used to delineate the total proposed price, which is the summation of all total unit cost prices shown in Schedule A.

<u>Schedule</u>	<u>Total Proposed Price – Summation of All Total Unit Price Items Identified in Schedule A</u> <u>(Figures in Dollars and Cents)</u>
<u>TOTAL PROPOSAL PRICE: (Sum of Schedule A)</u>	

Total Proposal Price (In Words):

Material Lead Time: (provide expected lead time for the purchase of the materials for Bid Item A-1 – Bid Item A-8)

Company Name:_____

Contact Name:_____

Signature:_____

Date:_____