

BOOSTER PUMP STATION - ISOLATION VALVES

- CONTRACTOR SHALL UTILIZE THE INLINE VALVES LABELED "VALVE No. 1" AND "VALVE No. 2" TO ISOLATE THE BOOSTER PUMP STATION DURING THE SCHEDULED REPAIR WORK.

©2022 Environmental Design & Research, Landscape Architecture, Engineering, & Environmental Services, D.P.C.

The following is paraphrased from the New York Education Law, Article 145, Section 7209, and Chapter II, Section 79-1.4, and applies to this drawing: "It is a violation of this law for any person unless he is acting under the direction of a licensed professional engineer, licensed landscape architect or licensed land surveyor to alter an item in any way, if an item bearing the seal of an engineer, landscape architect or land surveyor is altered, the altering engineer, landscape architect or land surveyor shall affix to the item his seal and the notation "altered by" followed by his signature and the date of such alteration and a specific description of the alteration".



**Environmental Design & Research,**

Landscape Architecture, Engineering & Environmental Services, D.P.C.  
217 Montgomery Street, Suite 1100  
Syracuse, New York 13202  
P. 315.471.0688

PROJECT TITLE: RFQ-2022-12 - BOOSTER PUMP STATION FACILITY UPGRADES

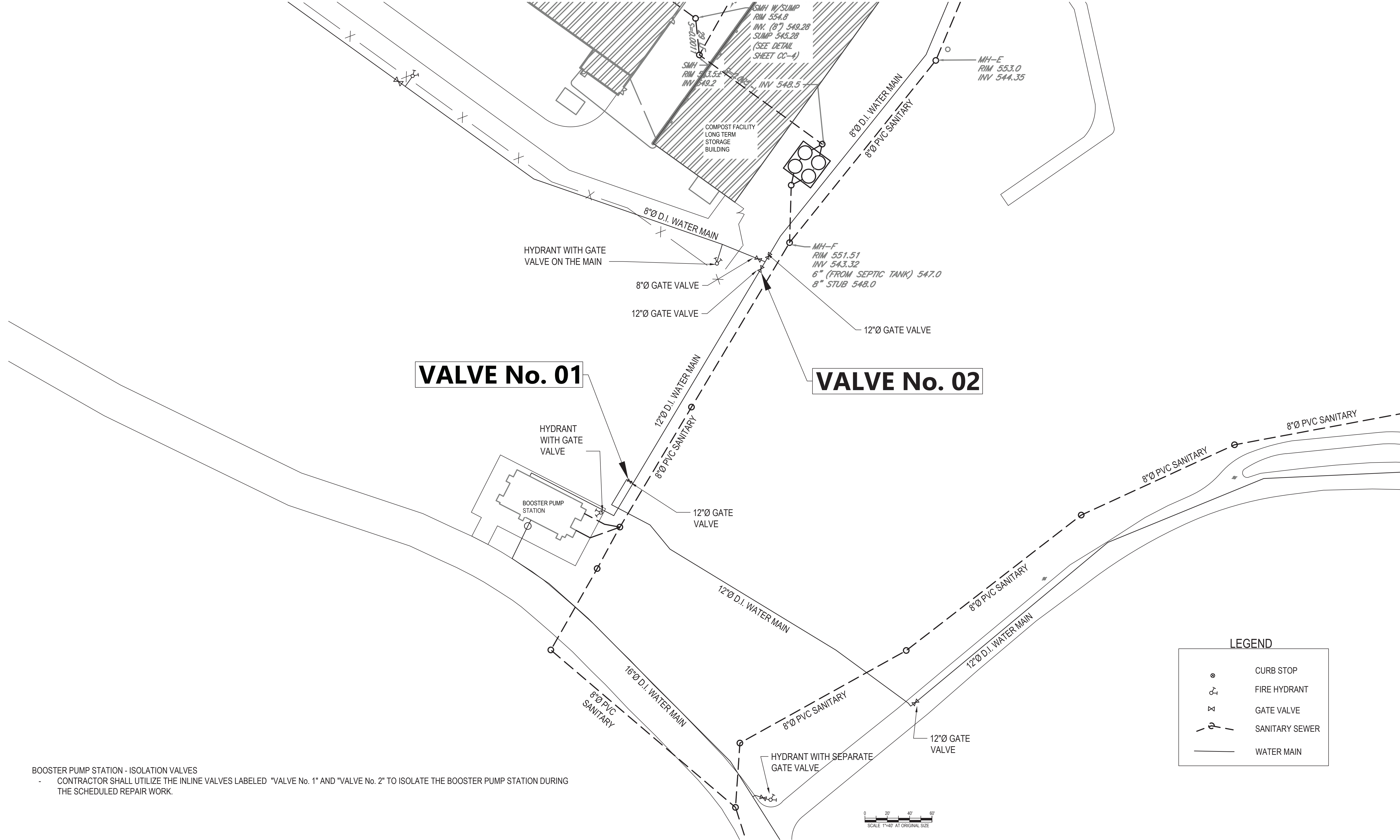
PROJECT LOCATION: **HILLBURN, NY**

CLIENT: **ROCKLAND GREEN**

DRAWING TITLE: **EXISTING ISOLATION VALVE LOCATIONS - EXTERIOR BOOSTER PUMP STATION**

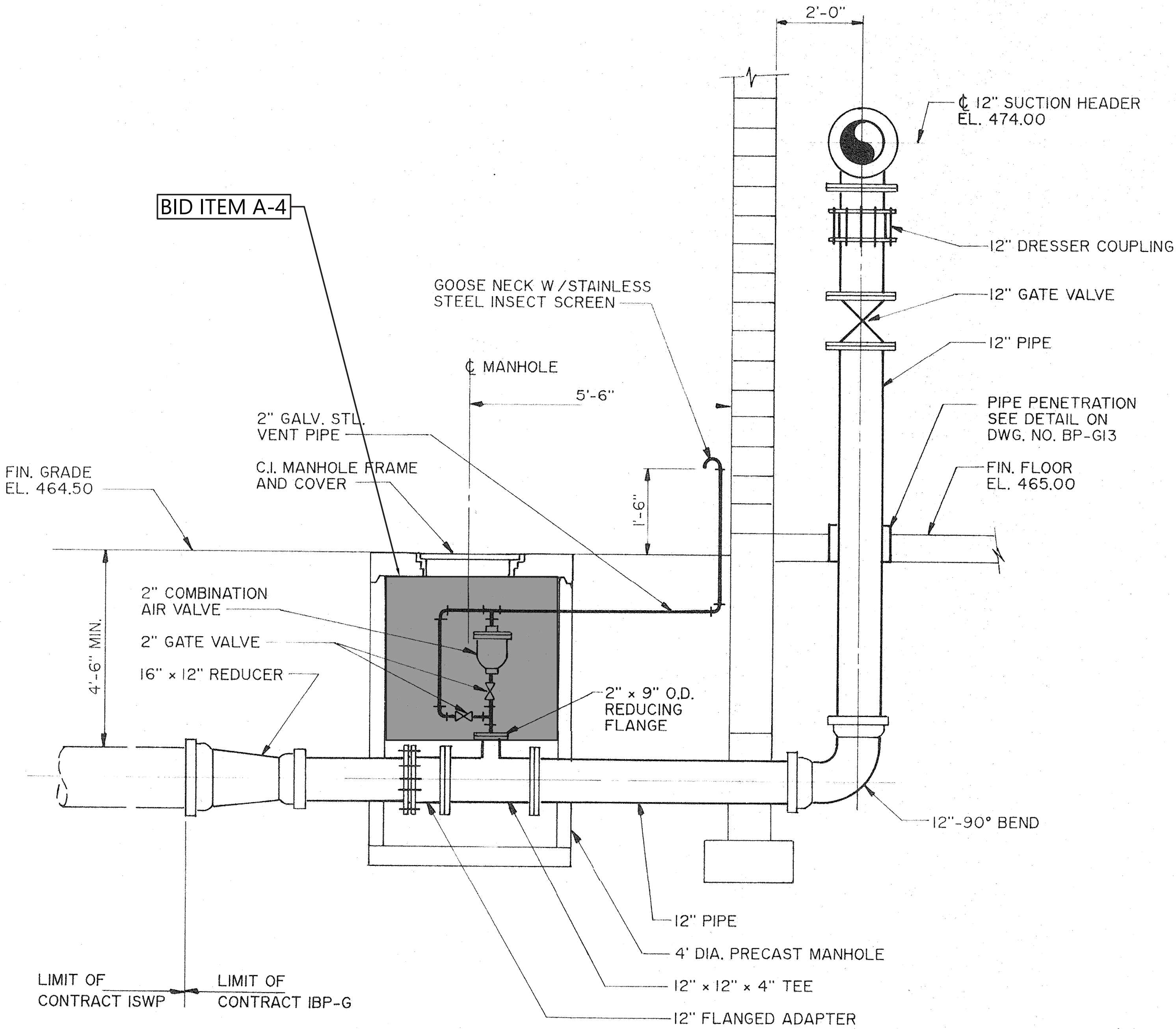
DRAWINGS ISSUED FOR / REVISIONS				BY			EDR JOB#: <b>20098</b>
NO.	DATE	ISSUED FOR / REVISION			CHK	APP	
1							
2							
3							
4							
5							DATE: <b>SEPTEMBER 2022</b>
6							
							SCALE: <b>AS NOTED</b>
							DRAWN BY: <b>JTW</b>
							CHECKED BY: <b>JHH</b>
							DRAWING NUMBER:

**G-01**

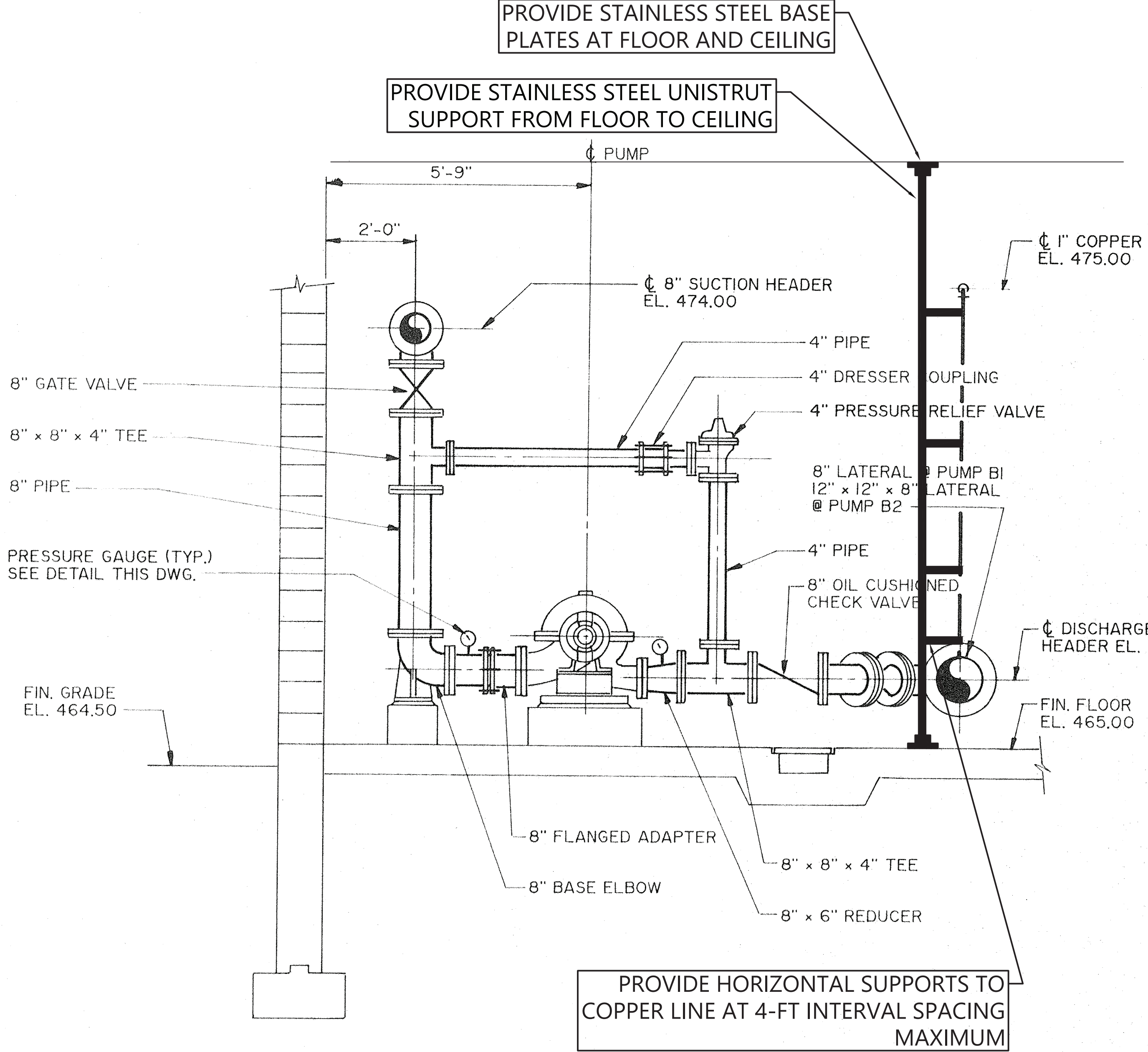




Date Printed: 10/17/2022 4:54:42 PM  
 J:\20088 Rockland Green\Working Drawings\Booster Pump Station\Booster Pump Layout.dwg  
 ©2022 Environmental Design & Research, Landscape Architecture, Engineering, & Environmental Services, D.P.C.  
 The following is paraphrased from the New York Education Law, Article 145, Section 7209, and Chapter II, Section 79-1.4, and applies to this drawing: "It is a violation of this law for any person unless he is acting under the direction of a licensed professional engineer, licensed landscape architect or licensed land surveyor to alter an item in any way, if an item bearing the seal of an engineer, landscape architect or land surveyor is altered, the altering engineer, landscape architect or land surveyor shall affix to the item his seal and the notation 'altered by' followed by his signature and the date of such alteration and a specific description of the alteration".



BID ITEM NO. A-4 DETAIL  
 Scale: NOT TO SCALE



BID ITEM NO. A-6 DETAIL  
 Scale: NOT TO SCALE



Environmental  
 Design & Research,  
 Landscape Architecture, Engineering  
 & Environmental Services, D.P.C.  
 217 Montgomery Street, Suite 1100  
 Syracuse, New York 13202  
 P. 315.471.0688

PROJECT TITLE: RFQ-2022-12 - BOOSTER PUMP STATION FACILITY UPGRADES  
 PROJECT LOCATION: HILLBURN, NY  
 CLIENT: ROCKLAND GREEN  
 DRAWING TITLE: MECHANICAL UPGRADES - DETIALS

DRAWINGS ISSUED FOR / REVISIONS							
NO.	DATE	ISSUED FOR / REVISION			BY	CHK	APP
1							
2							
3							
4							
5							
6							

C-01