

REQUEST FOR QUOTE

Please Find Enclosed Specifications For

RFQ-2022-12

Booster Pump Station Facility Upgrades

Torne Valley Rd Hillburn, NY

Whereas a quote on the above are currently being solicited, I would like to both invite and encourage your participation. The Authority encourages the fullest possible utilization of Minority and Women Owned Business Enterprises.

Should you care to participate, please be advised that all quotes are returnable to my office by 2:00PM on Friday October 28, 2022.

Thank you.

Purchasing Dept.
Rockland Green
Phone: 845-753-2200
Fax: 845-753-2281
Email: purchasing@rocklandgreen.com

Procurement Schedule**RFQ – 2022 – 12**

Availability of RFQ	Wednesday, October 19, 2022
Mandatory Site Visit	Monday, October 24, 2022 @ 9:30am <i>300 Torne Valley Rd, Hillburn, NY 10931</i>
Deadline for Receipt of Quotes	Friday October 28, 2022 @ 2pm
Selection of Contractor	Friday October 28, 2022

Please note: Any questions regarding this quote should be directed to
Ronnie Ludwig at 845-671-9399.

SCOPE OF WORK

RFQ #2022-12: Booster Pump Station Facility Upgrades

Project Background

The Rockland County Solid Waste Management Authority (d/b/a Rockland Green) owns and operates a private, potable water conveyance system that serves the Hillburn Solid Waste Facility campus. This includes a water (pressure) booster pump station on Torne Valley Road that provides potable water to the existing Biosolids Co-composting Facility, Materials Recovery Facility, and the Hillburn MSW Transfer Station. The purpose of the booster pump station is to increase water pressure to each of the facilities that are located at a higher elevation from the primary water supply on Torne Valley Road. The pump station provides normalized water pressure during average daily usage (through the "A" pumps) and increased pressures during high flow use for fire protection (through the "B" pumps). The existing booster pumps, controls, expansion tank, and associated mechanical systems are contained within a single building.

A valve within the pump station building can shut off the water supply to the pump station, but isolation of the pump station from backflow must be done using downstream valves (two) outside the pump station (refer to Drawing No.G-01).

The purpose of this RFQ is to solicit quotes for completing identified mechanical upgrades to the pump station, including replacement of an exterior air relief valve just outside the pump station.

III. Scope of Services Summary:

Rockland Green's objective is to issue a purchase order to a qualified mechanical contractor to provide the following services:

The scope of work listed below includes furnishing all equipment, materials, labor, rental equipment, and miscellaneous tools to satisfactorily complete the work to the acceptance of Rockland Green. All new fittings, valves, and materials shall be rated for use for potable water systems and in accordance with the attached plans and specifications.

1. Coordinate and temporarily shut down the booster pump station while repairs are underway. Shutdown time shall be minimized to the greatest extent possible, and Contractor shall submit a written plan and schedule for completing the work prior to the commencement of work. Note that replacement of the exterior air relief valve will require shut down of the primary 16-inch water main upstream of the pump station. All coordination with local Fire Control shall be the responsibility of the contractor, including personnel for fire watch during the system shutdown.
2. Furnish and install a new 12-inch diameter 4-way cross fitting and air relief valve as shown on the drawings.
3. Furnish and Install a new 8-inch diameter 300# 22 ½ degree elbow fitting.
4. Furnish and install a new 4-inch diameter pipe and gate valve at the existing expansion tank.
5. Furnish and install a new air relief valve in the existing precast manhole structure.

6. Furnish one and install two 8-inch diameter gate valves (Rockland Green will provide one of the 8-inch valves); and furnish and install one 12-inch diameter gate valve.
7. Install additional supports to the existing ½-inch copper tubing serving the existing pressure switches.

Coordination

1. All work activities shall be coordinated with Rockland Green. Adjustments or deviations to the daily work schedule can only be approved by Rockland Green.
2. Work shall not commence until all shop drawings have been approved and all fittings, valves, and associated materials have arrived on site. The goal is to perform work efficiently to minimize disruption to water service.

BOOSTER PUMP STATION - ISOLATION VALVES

- CONTRACTOR SHALL UTILIZE THE INLINE VALVES LABELED "VALVE No. 1" AND "VALVE No. 2" TO ISOLATE THE BOOSTER PUMP STATION DURING THE SCHEDULED REPAIR WORK.

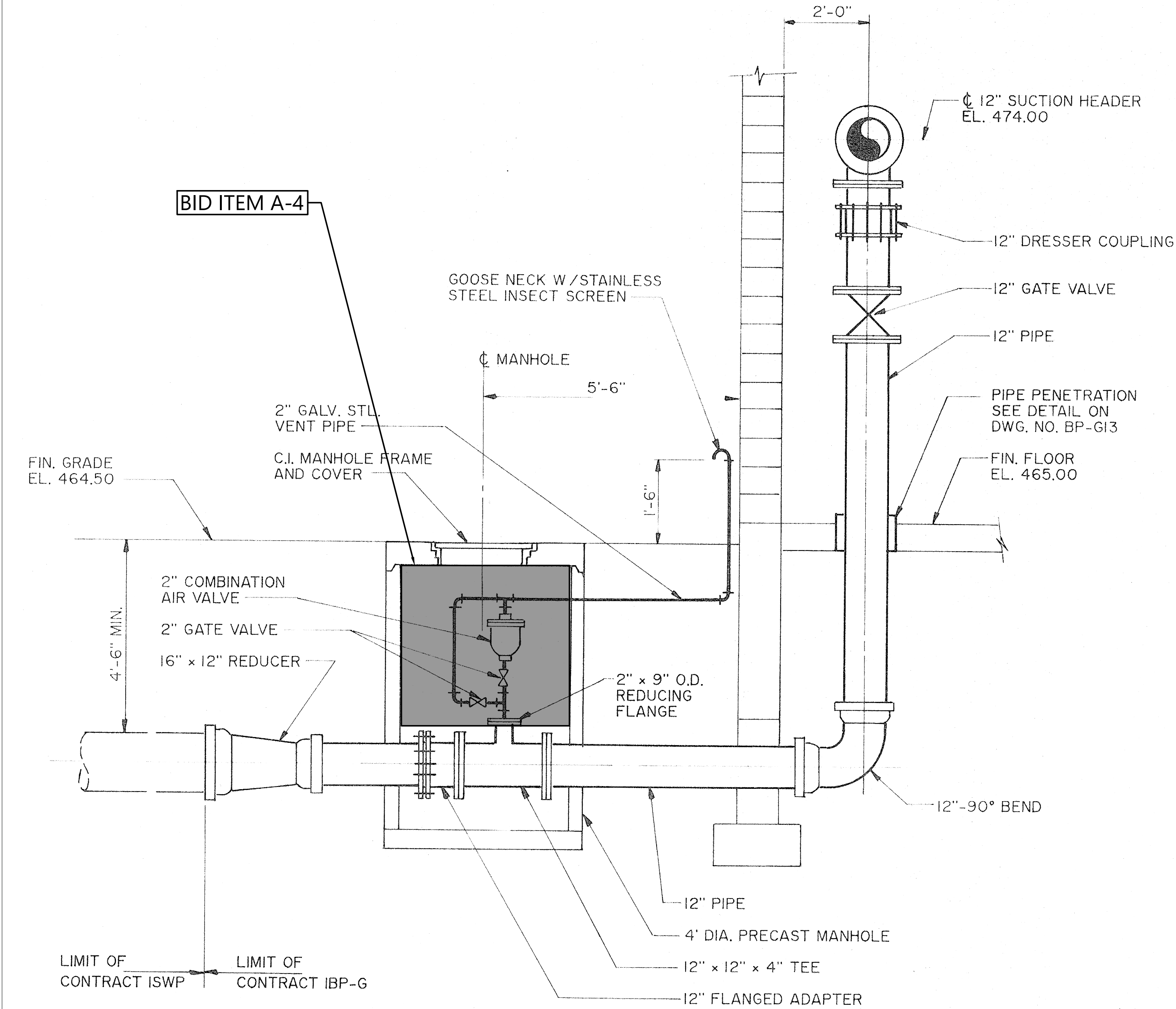
©2022 Environmental Design & Research, Landscape Architecture, Engineering, & Environmental Services, D.P.C.

The following is paraphrased from the New York Education Law, Article 145, Section 7209, and Chapter II, Section 79-1.4, and applies to this drawing: "It is a violation of this law for any person unless he is acting under the direction of a licensed professional engineer, licensed landscape architect or licensed land surveyor to alter an item in any way, if an item bearing the seal of an engineer, landscape architect or land surveyor is altered, the altering engineer, landscape architect or land surveyor shall affix to the item his seal and the notation "altered by" followed by his signature and the date of such alteration and a specific description of the alteration".



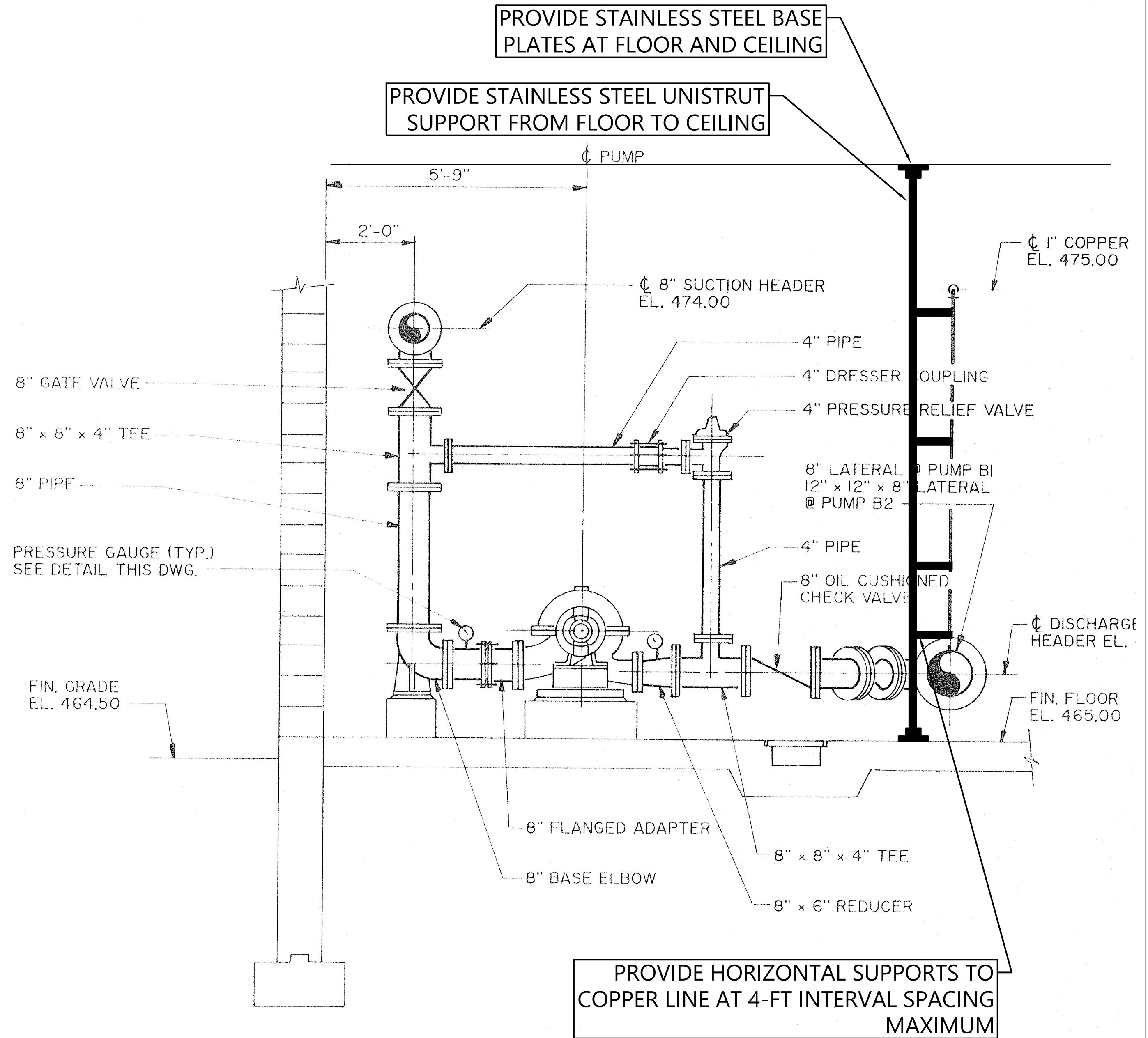
Environmental Design & Research,
Landscape Architecture, Engineering
& Environmental Services, D.P.C.
217 Montgomery Street, Suite 1100
Syracuse, New York 13202
P. 315.471.0688

PROJECT TITLE:		RFQ-2022-12 - BOOSTER PUMP STATION FACILITY UPGRADES				DRAWINGS ISSUED FOR / REVISIONS				EDR JOB#: 20098	
						NO.	DATE	ISSUED FOR / REVISION	BY	CHK	APP
						1					
						2					
						3					
PROJECT LOCATION: HILLBURN, NY						4					
CLIENT: ROCKLAND GREEN						5					
DRAWING TITLE: EXISTING ISOLATION VALVE LOCATIONS - EXTERIOR BOOSTER PUMP STATION						6					



BID ITEM NO. A-4 DETAIL

Scale: NOT TO SCALE



BID ITEM NO. A-6 DETAIL

Scale: NOT TO SCALE



Environmental Design & Research,
Landscape Architecture, Engineering & Environmental Services, D.P.C.
217 Montgomery Street, Suite 1100
Syracuse, New York 13202
P. 315.471.0688

PROJECT TITLE: RFQ-2022-12 - BOOSTER PUMP STATION FACILITY UPGRADES

PROJECT LOCATION: HILLBURN, NY

CLIENT: ROCKLAND GREEN

DRAWING TITLE: MECHANICAL UPGRADES - DETIALS

DRAWINGS ISSUED FOR / REVISIONS						EDR JOB#: 20098		
NO.	DATE	ISSUED FOR / REVISION	BY	CHK	APP	DATE: SEPTEMBER 2022		
1						SCALE: AS NOTED		
2						DRAWN BY: JTW		
3						CHECKED BY: JHH		
4						DRAWING NUMBER:		
5						C-01		
6								

SECTION 01026

LUMP SUM ITEMS (BID ITEM DESCRIPTIONS)

RFQ-2022-12 – Booster Pump Station Facility Upgrades

PART 1 GENERAL

1.01. SECTION INCLUDES

- A. Price basis.
- B. Elements of Bid Item Description page.
- C. Lump sum item list.
- D. Bid Item Descriptions.

1.02. PRICE BASIS

- A. Lump sum prices bid by Contractor are deemed to be full compensation for all required labor, products, tools, equipment, plant, transportation, testing, inspection, services, incidentals, administrative, procedures, applicable taxes, permit fees, overhead, profit, and other miscellaneous expenses.

1.03. ELEMENTS OF BID ITEM DESCRIPTION PAGE

- A. Identification of lump sum item, as set forth in the Bid Form.
- B. Statement of work involved in the item.
- C. Listing of components of work which make-up the item including reference to the section(s) covering each component.
- D. Cross-references to associated work not included in the item.

1.04. LUMP SUM ITEMS - CONTRACT 1

Bid Item No.	Bid Item Description
A-1	Furnish and Install New 12-inch Diameter 4-Way Cross fitting and Air Relief Valve
A-2	Furnish and Install New 8-inch Diameter 300# 22 ½ degree Elbow Fitting
A-3	Furnish and Install New 4-inch Diameter Pipe and Gate Valve at the Existing Expansion Tank
A-4	Furnish and Install New Air Relief Valve in Existing Precast Manhole Structure
A-5	Furnish One and Install Two 8-inch Diameter Gate Valves, and Furnish and Install One 12-inch Diameter Gate Valve
A-6	Complete Modifications to the ½-inch Copper Tubing Serving the Existing Pressure Switches, Complete

1.06 BID ITEM DESCRIPTIONS

- A. Bid Item Description pages identified above are attached at the end of this section.

PART 2 PRODUCTS

Not used.

PART 3 EXECUTION

Not used.

(continued)

FURNISH AND INSTALL NEW 12-INCH DIAMETER 4-WAY CROSS FITTING AND AIR RELIEF VALVE,
COMPLETE

- A. DESCRIPTION Under this item, Contractor shall provide all labor, materials, and equipment (rented and owned) necessary to complete the removal of the existing 12" diameter ductile iron tee fitting and installation of a new 12" diameter 4-way cross ductile iron fitting, rated for public water use with a double cement lining or approved equal, complete with hardware, gaskets, tie rods, and touch up paint. Work shall include providing and installing a stainless-steel blind flange, stainless steel nipple, and stainless-steel air release valve on top of the new 4-way cross fitting. Fitting shall be painted to match existing color of water piping. All in accordance with the Terms and Conditions of the Agreement with Rockland Green and the Contract Drawings.
- B. WORK INCLUDED UNDER THIS ITEM
- Mobilization
 - Demobilization
 - All materials must be submitted and approved prior to installation. All materials in contact with the potable water must be rated for potable water use and meet the following requirements
 - ANSI A21.4/AWWA C104
 - ANSI A21.10/AWWA C110,
 - ANSI A21.11/AWWA C111
 - ANSI A21.50/AWWA C150
 - ANSI A21.51/AWWA C151
 - AWWA C600 & ASTM A126
 - Temporary Set-up and removal of rigging equipment for demolition and installation work
 - Remove existing 12" diameter ductile iron tee and hardware, gaskets, and appurtenances
 - Replace with new 12" diameter ductile iron 4-way cross fitting
 - Furnish and install new gaskets, new Tie-Rods, and all appurtenances for a complete replacement
 - Furnish and install a new 12" stainless steel blind flange on top of 4-way fitting
 - Furnish and install a 1" stainless steel thread-o-let, a 1" 316L stainless steel nipple, and a Model 920 Cast Iron body stainless steel float air relief valve.
- C. ASSOCIATED WORK NOT INCLUDED UNDER THIS ITEM All Other Bid Items
- D. METHOD OF PAYMENT Measurement shall be based on the completion of all activities including labor, equipment, and materials necessary to complete specified construction work. All material must be approved by the engineer prior to any payment. Payment for stored materials shall include backup for proof of purchase and must have been delivered to the site.

FURNISH AND INSTALL NEW 8-INCH DIAMETER 300# 22 ½ DEGREE ELBOW FITTING, COMPLETE

- | | | |
|----|---|---|
| A. | <u>DESCRIPTION</u> | Under this item, Contractor shall provide all labor, materials, and equipment (rented and owned) necessary to complete the removal of the existing 8" diameter 22 ½ degree fitting and provide and install a new 8" diameter 22 ½ degree fitting, ductile iron rated for public water use with a double cement lining or approved equal. All in accordance with the Terms and Conditions of the Agreement with Rockland Green and the Contract Drawings. |
| B. | <u>WORK INCLUDED UNDER THIS ITEM</u> | <ul style="list-style-type: none"> • Mobilization • Demobilization • All materials must be submitted and approved prior to installation. All materials in contact with the potable water must be rated for potable water use and meet the following requirements <ul style="list-style-type: none"> ○ ANSI A21.4/AWWA C104 ○ ANSI A21.10/AWWA C110, ○ ANSI A21.11/AWWA C111 ○ ANSI A21.50/AWWA C150 ○ ANSI A21.51/AWWA C151 ○ AWWA C600 & ASTM A126 • Installation of supports, rigging and/or shoring needed for the removal and installation of the new fitting, complete • remove existing 8" diameter ductile iron 22 ½ degree fitting and hardware, gaskets, and appurtenances • replace with new 8" diameter ductile iron 22 1/2" degree fitting • install new gaskets and hardware & provide and install new Tie-Rods, and all appurtenances for a complete replacement. |
| C. | <u>ASSOCIATED WORK NOT INCLUDED UNDER THIS ITEM</u> | All work associated with remaining lump sum, unit price and add alternate bid items. |
| D. | <u>METHOD OF PAYMENT</u> | Measurement shall be based on the completion of all activities including labor, equipment, and materials necessary to complete specified construction work. Payment for stored materials shall include backup for proof of purchase and must have been delivered to the site. |

FURNISH AND INSTALL NEW 4-INCH DIAMETER PIPE AND GATE VALVE AT THE EXISTING EXPANSION TANK, COMPLETE

- A. DESCRIPTION Under this item, Contractor shall provide all labor, materials, and equipment (rented and owned) necessary to complete the removal of the existing 4" diameter pipe and removal of existing valve, provide and install new spool piece complete with weld on flanges, pressure gauges, flanged gate valve, and gauge assemblies and appurtenances for a complete assembly. All in accordance with the Terms and Conditions of the Agreement with Rockland Green and the Contract Drawings.
- B. WORK INCLUDED UNDER THIS ITEM
- Mobilization
 - Demobilization
 - All materials must be submitted and approved prior to installation. All materials in contact with the potable water must be rated for potable water use and meet the following requirements
 - ANSI A21.4/AWWA C104
 - ANSI A21.10/AWWA C110,
 - ANSI A21.11/AWWA C111
 - ANSI A21.50/AWWA C150
 - ANSI A21.51/AWWA C151
 - AWWA C600 & ASTM A126
 - Furnish and install new 4" steel pipe (32 1/16" in length), with 4" 150# slip-on flanges at each end,
 - Furnish and install a 1/2" coupling to center of pipe, install a 0-200 PSI bottom mount 4 1/2" face pressure gauge with 1/2" 304L SS piping, complete
 - Furnish and install three stainless steel 1/2" ball valves (quarter-turn)
 - Remove existing 4" pipe from base of existing water tank and existing gate valve
 - Furnish and install new Matco Model 225W11, 4" 150 # Flanges gate valve, ductile iron rated for potable water, non-rising stem, hand-wheel, NSF-61, /NSF-372, AWWA C515-15, with new gaskets, hardware, and appurtenances
 - Furnish and install new fabricated gauge assembly and any ductile iron spool pieces needed for a complete assembly. All piping, valves and gauges shall be rated for potable water.
- C. ASSOCIATED WORK NOT INCLUDED UNDER THIS ITEM All work associated with remaining lump sum, unit price and add alternate bid items.
- D. METHOD OF PAYMENT Measurement shall be based on the completion of all activities including labor, equipment, and materials necessary to complete specified construction work. Payment for stored materials shall include backup for proof of purchase and must have been delivered to the site.

FURNISH AND INSTALL NEW AIR RELIEF VALVE IN EXISTING PRECAST MANHOLE STRUCTURE,
COMPLETE

- | | |
|--|---|
| A. <u>DESCRIPTION</u> | Under this item, Contractor shall provide all labor, materials, and equipment (rented and owned) necessary to complete the installation of a new air relief valve in the manhole structure outside the booster pump station, complete with connecting piping, valves, and materials for a complete system. All in accordance with the Terms and Conditions of the Agreement with Rockland Green and the Contract Drawings. |
| B. <u>WORK INCLUDED UNDER THIS ITEM</u> | <ul style="list-style-type: none"> • Mobilization • Demobilization • All materials must be submitted and approved prior to installation. All materials in contact with the potable water must be rated for potable water use and meet the following requirements <ul style="list-style-type: none"> ○ ANSI A21.4/AWWA C104 ○ ANSI A21.10/AWWA C110, ○ ANSI A21.11/AWWA C111 ○ ANSI A21.50/AWWA C150 ○ ANSI A21.51/AWWA C151 ○ AWWA C600 & ASTM A126 • Remove existing air relief valve, clean piping, install new Golden Anderson Model 945-T single Body Combination Air Valve, dual chamber cast iron body/cover, 316 S.S. floats and linkage, Buna N seat, 2" NPT inlet and outlet, • Connect 2" interconnecting piping to include all stainless steel 2" Tees, 2" unions, nipples 90-degree elbows and two 2" NPT 316 stainless steel ball valves to piping. • Furnish and install inlet compression fitting. Materials on pipe fitting shall be black pipe, fitting to bulkhead with 2" compression coupling. |
| C. <u>ASSOCIATED WORK NOT INCLUDED UNDER THIS ITEM</u> | All work associated with remaining lump sum, unit price and add alternate bid items. |
| D. <u>METHOD OF PAYMENT</u> | Measurement shall be based on the completion of all activities including labor, equipment, and materials necessary to complete specified construction work. Payment for stored materials shall include backup for proof of purchase and must have been delivered to the site. |

FURNISH ONE AND INSTALL TWO 8-INCH DIAMETER GATE VALVES, AND FURNISH AND INSTALL ONE 12-INCH DIAMETER GATE VALVE, COMPLETE

- A. DESCRIPTION Under this item, Contractor shall provide all labor, materials, and equipment (rented and owned) necessary to complete the supply, installation, and testing of one 8" diameter gate valve rated for potable water, one 12" diameter gate valve rated for potable water and the installation and testing of one existing 8" gate valve currently being stored at the booster pump station. All in accordance with the Terms and Conditions of the Agreement with Rockland Green and the Contract Drawings.
- B. WORK INCLUDED UNDER THIS ITEM
- Mobilization
 - Demobilization
 - All materials must be submitted and approved prior to installation. All materials in contact with the potable water must be rated for potable water use and meet the following requirements
 - ANSI A21.4/AWWA C104
 - ANSI A21.10/AWWA C110,
 - ANSI A21.11/AWWA C111
 - ANSI A21.50/AWWA C150
 - ANSI A21.51/AWWA C151
 - AWWA C600 & ASTM A126
 - Furnish the labor, material and equipment required to remove the existing 8" diameter gate valves and one 12" diameter gate valve including all rigging, temporary supports, dewatering, and appurtenances for a complete removal.
 - Furnish the labor, material and equipment required to install one 8" diameter gate valve provided by OWNER, one 8" diameter gate valve provided by contractor, and one 12" diameter gate valve provided by contractor. Installation includes all gaskets, mounting hardware, threaded rod supports, pipe supports, joint restraints, painting, and appurtenances for a complete installation.
 - Furnish and install all rigging, equipment, temporary supports, and specialty tools and equipment for the successful removal of the existing valves and installation of the new valves.
- C. ASSOCIATED WORK NOT INCLUDED UNDER THIS ITEM All work associated with remaining lump sum, unit price and add alternate bid items.
- D. METHOD OF PAYMENT Measurement shall be based on the completion of all activities including labor, equipment, and materials necessary to complete specified construction work. Payment for stored materials shall include backup for proof of purchase and must have been delivered to the site.

COMPLETE MODIFICATIONS TO THE 1/2-INCH COPPER TUBING SERVING THE EXISTING PRESSURE SWITCHES, COMPLETE, COMPLETE

- A. DESCRIPTION Under this item, Contractor shall provide all labor, materials, and equipment (rented and owned) necessary to complete the modifications to the existing 1/2" copper tubing for the pressure switches which control the "B" pumps at the booster pump station. All in accordance with the Terms and Conditions of the Agreement with Rockland Green and the Contract Drawings.
- B. WORK INCLUDED UNDER THIS ITEM
- Mobilization
 - Demobilization
 - All materials must be submitted and approved prior to installation. All materials in contact with the potable water must be rated for potable water use and meet the following requirements
 - ANSI A21.4/AWWA C104
 - ANSI A21.10/AWWA C110,
 - ANSI A21.11/AWWA C111
 - ANSI A21.50/AWWA C150
 - ANSI A21.51/AWWA C151
 - AWWA C600 & ASTM A126
 - Furnish the labor, material and equipment required to remove the a 90-degree elbow and tubing to facilitate the installation of a "TEE" section and continuation of the 1/2-inch copper tubing.
 - Furnish the labor, material and equipment required to install one copper "TEE" fitting, 90-degree fitting, 1/2-inch copper tubing and a ball valve to extend the tubing down to the operator's level.
 - Furnish all rigging, equipment, temporary supports, and specialty tools and equipment for the removal of the existing tubing and fittings, and the installation of the new tubing and fittings.
 - Furnish the labor, material, and equipment to fabricate and install a pipe support stand using stainless steel Unistrut, including all mounting hardware, connection fittings and appurtenances.
- C. ASSOCIATED WORK NOT INCLUDED UNDER THIS ITEM All work associated with remaining lump sum, unit price and add alternate bid items.
- D. METHOD OF PAYMENT Measurement shall be based on the completion of all activities including labor, equipment, and materials necessary to complete specified construction work. Payment for stored materials shall include backup for proof of purchase and must have been delivered to the site.

END OF SECTION

PRICE QUOTATION FORM

RFQ-2022-12 – Booster Pump Station Facility Upgrades

Proposer shall perform the Work in accordance with the Contract Documents for the prices shown in the Price Proposal Summary shown below.

Proposer acknowledges that Proposer's price(s) constitute Proposer's sole compensation for performing all Work required by the Contract Documents, and if a particular part of the Work is not listed specifically in the Price Proposal Summary set forth below in Schedule A of this section, Proposer shall include that part of the Work in the Cost Item Description which it most logically belongs.

Schedule A: Lump Sum Cost Items:

Lump sum items include all Work in the Contract Documents, except items specifically identified as Unit Price Work.

Measurement and payment of Lump Sum Cost Items is defined in Section 01026, Lump Sum Items, of the Technical Specifications (if applicable) and Rockland Green's Contract Terms and Conditions.

Lump Sum Cost Items Table:

<u>Item No.</u>	<u>Estimated Quantity</u>	<u>Units</u>	<u>Description</u>	<u>Total Item Price (Figures in Dollars and Cents)</u>
A-1	1	LS	Furnish and Install New 12-inch Diameter 4-Way Cross fitting and Air Relief Valve: (See description of work included in specification section 01026)	
A-2	1	LS	Furnish and Install New 8-inch Diameter 300# 22 ½ degree Elbow Fitting (See description of work included in specification section 01026)	
A-3	1	LS	Furnish and Install New 4-inch Diameter Pipe and Gate Valve at the Existing Expansion Tank (See description of work included in specification section 01026)	
A-4	1	LS	Furnish and Install New Air Relief Valve in Existing Precast Manhole Structure. (See description of work included in specification section 01026)	

A-5	1	LS	Furnish One and Install Two 8-inch Diameter Gate Valves, and Furnish and Install One 12-inch Diameter Gate Valve (See description of work included in specification section 01026)	
A-6	1	LS	Complete Modifications to the ½-inch Copper Tubing Serving the Existing Pressure Switches, Complete (See description of work included in specification section 01026)	

Schedule B: Total Proposal Price:

Determination of the Total Proposal Price will be determined as follows.

- a. All mathematical errors will be corrected. In case of a discrepancy between unit prices and extended totals, unit prices will govern. In case of discrepancy between the correct sum of individual bid items and the (incorrectly) calculated sum, the correct sum of individual cost items will govern.

Proposer shall complete the shaded Total Proposed Price section in Schedule B. The shaded areas are used to delineate the total proposed price, which is the summation of all total unit cost prices shown in Schedule A.

<u>Schedule</u>	<u>Total Proposed Price – Summation of All Total Unit Price Items Identified in Schedule A</u> <u>(Figures in Dollars and Cents)</u>
<u>TOTAL PROPOSAL PRICE: (Sum of Schedule A)</u>	

Total Proposal Price (In Words):
