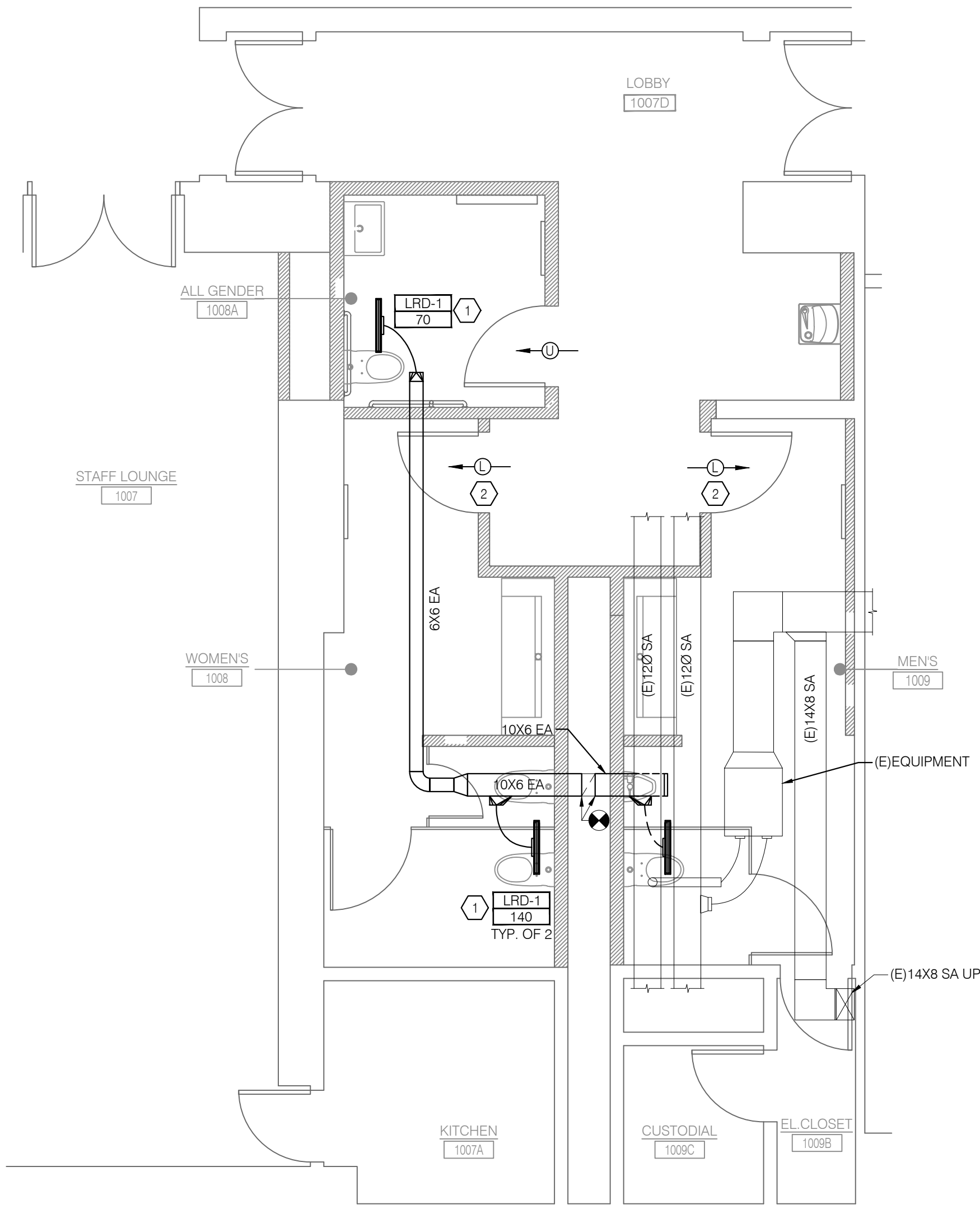


1
M-104.00

BASEMENT LEVEL PLAN - MECHANICAL REMOVALS

SCALE: 1/4" = 1'-0"



2
M-104.00

BASEMENT LEVEL PLAN - MECHANICAL NEW WORK

SCALE: 1/4" = 1'-0"

GENERAL NOTES

- EXISTING WORK SHOWN IS BASED ON AVAILABLE DOCUMENTATION AND SPOT CHECKS ON SURVEY. CONTRACTOR TO FIELD VERIFY EXISTING CONDITIONS AND COORDINATE WITH ENGINEER PRIOR TO PROCEEDING WITH WORK.
- THE DEMOLITION PLAN IS INTENDED TO PROVIDE THE CONTRACTOR WITH A GENERAL KNOWLEDGE OF THE EXISTING CONDITIONS WITHIN THE PROJECT AREA.
- CONTRACTOR SHALL SCHEDULE ALL WORK IN ACCORDANCE WITH OWNER'S REQUIREMENTS.
- CONTRACTOR TO FIELD COORDINATE ALL REMOVAL/STORAGE/DISPOSAL OF EXISTING EQUIPMENT WITH THE OWNER.
- CONTRACTOR TO COORDINATE WITH ARCHITECT AND STRUCTURAL ENGINEER TO PATCH AND REPAIR AREAS AFFECTED BY DEMOLITION WORK.
- CONTRACTOR TO REINSTALL ALL THERMOSTATS OR SENSORS AFFECTED BY DEMOLITION.

DEMOLITION KEY NOTES

- REMOVE EXISTING DUCTWORK AND ALL ASSOCIATED AIR DEVICES ACCESSORIES/FITTINGS, INSULATION, HANGERS, SUPPORTS, ETC., WITHIN THE WORK AREA SHOWN.
- (E)10x6 EA DUCT DN TO REMAIN.

SHEET KEY NOTES

- PROVIDE EXHAUST LINEAR DIFFUSER AT THE LOCATION SHOWN AND COORDINATE WITH ARCH. RCP. (TYP.).
- PROVIDE DOOR LOUVER OF 0.3 SQ FT WITH 100% FREE AREA.

RESTROOM RENOVATION
PURCHASE COLLEGE

STATE UNIVERSITY OF NEW YORK

735 Anderson Hill Rd.
Purchase, NY 10577

PHASE 2:

MUSIC BUILDING
DANCE BUILDING
PHYS. ED. BUILDING
LIBRARY

Conditions

ALL IDEAS, DESIGNS, ARRANGEMENTS AND PLANS INDICATED OR REPRESENTED BY THIS DRAWING ARE OWNED BY, AND THE PROPERTY OF RONNETTE RILEY ARCHITECT AND WERE CREATED, DEVELOPED AND DEVELOPED FOR THE USE OF, AND IN CONNECTION WITH THE NONE OF SUCH IDEAS, DESIGNS, ARRANGEMENTS OR PLANS SHALL BE USED BY OR DISCLOSED TO ANY PERSON, FIRM OR CORPORATION FOR ANY PURPOSE WHATSOEVER WITHOUT THE WRITTEN PERMISSION OF RONNETTE RILEY ARCHITECT.

© Copyright Ronnette Riley Architect 2020

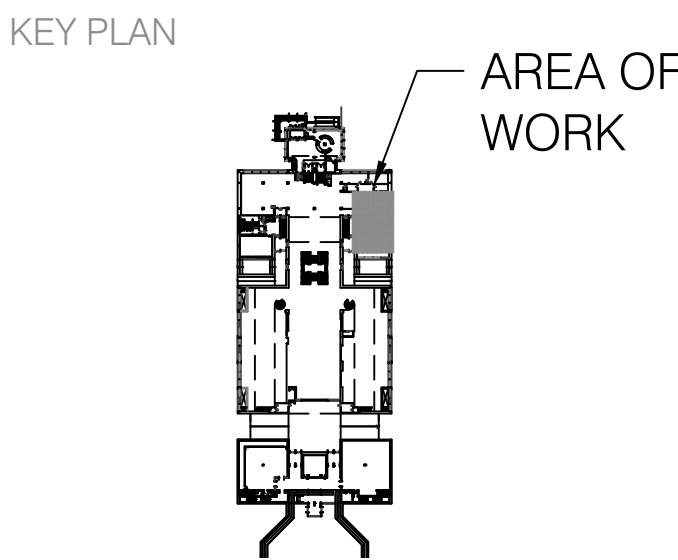
Ronnette Riley Architect

494 Eighth Avenue, 15th Floor
New York, NY 10001
T 212 594 4015
F 212 594 2868
www.ronnettenriley.com

MEP Engineer

SETTY & Associates, Ltd
149 W 36th Street, 8th floor
New York, NY 10018
T 646 253 9000
F 646 224 8497

Rev	Date	Issue
29 April 2022	Issue for Bid	



Title
LIBRARY BUILDING -
MECHANICAL PLANS

Date 01-16-2020
Project No. 1944
Drawing By AKV
CHK By BS
Scale AS NOTED

DOB Rev

M-104.00

