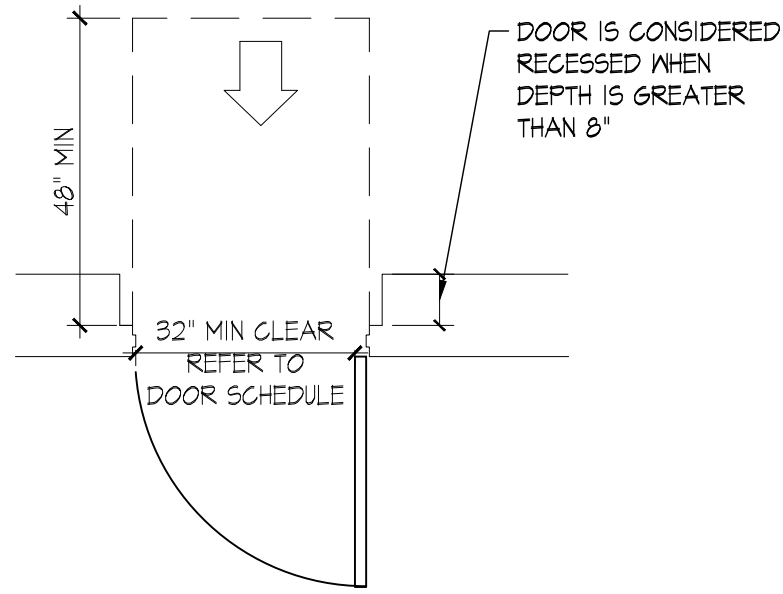
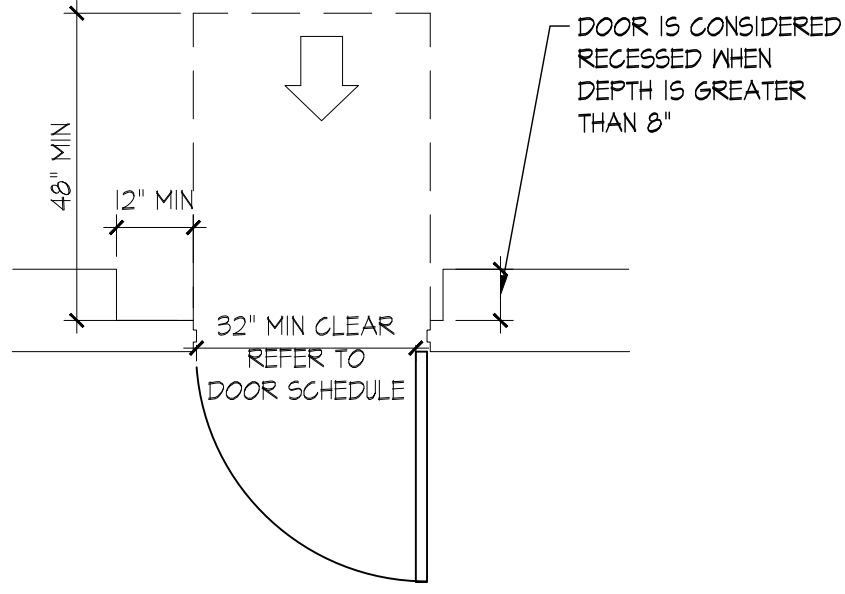


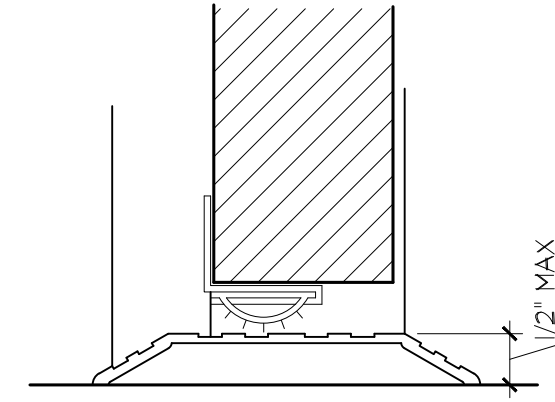
RECESSED DOOR
PULL SIDE, FRONT APPROACH
(WITH OR WITHOUT CLOSER)



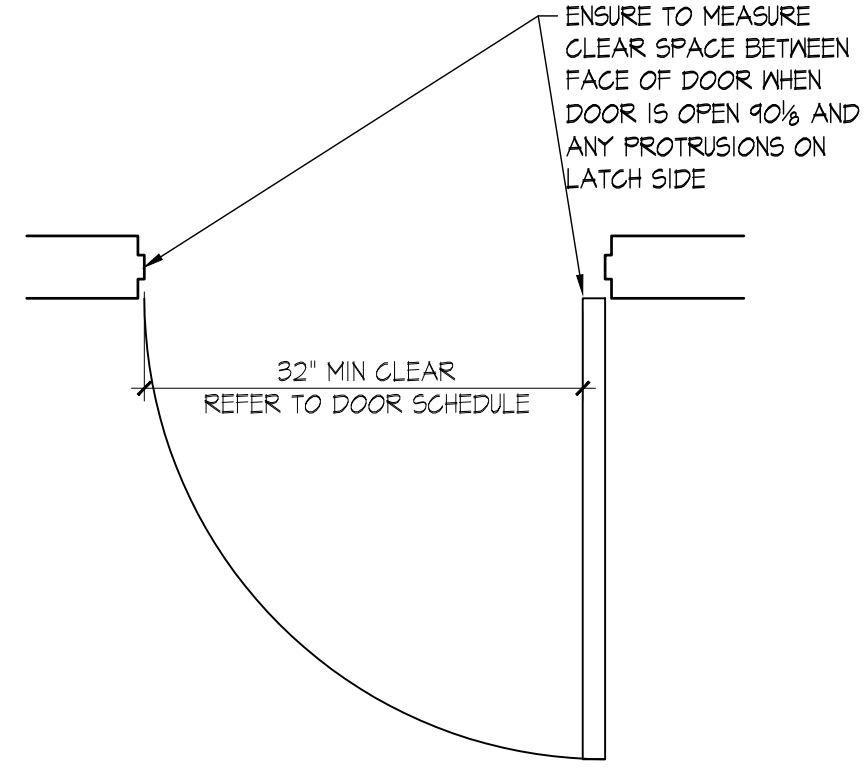
RECESSED DOOR
PUSH, FRONT APPROACH
(WITHOUT CLOSER)



RECESSED DOOR
PUSH, FRONT APPROACH
(WITH CLOSER)



THRESHOLD

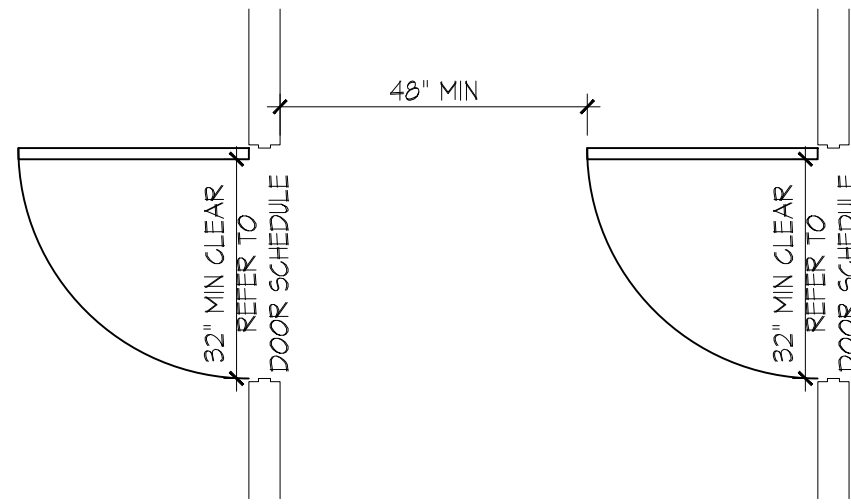


CLEARANCE THROUGH DOOR

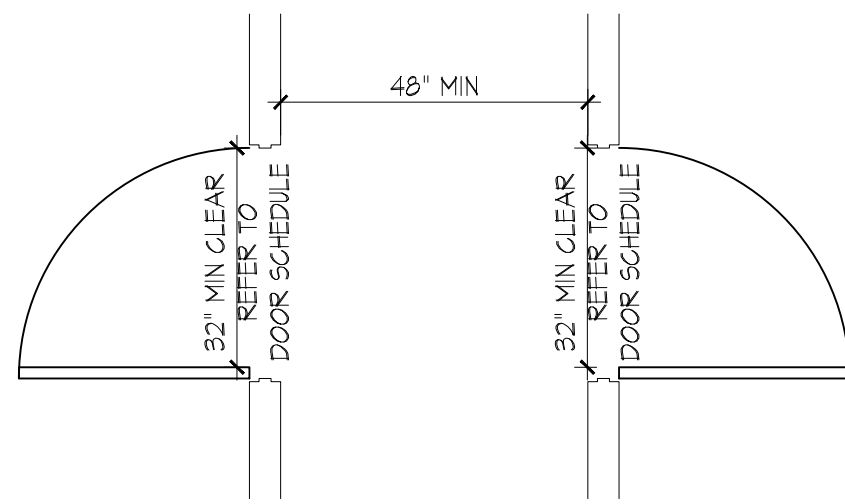
4 ADA RECESSED DOOR CLEARANCES
NOT TO SCALE

3 ADA THRESHOLD
NOT TO SCALE

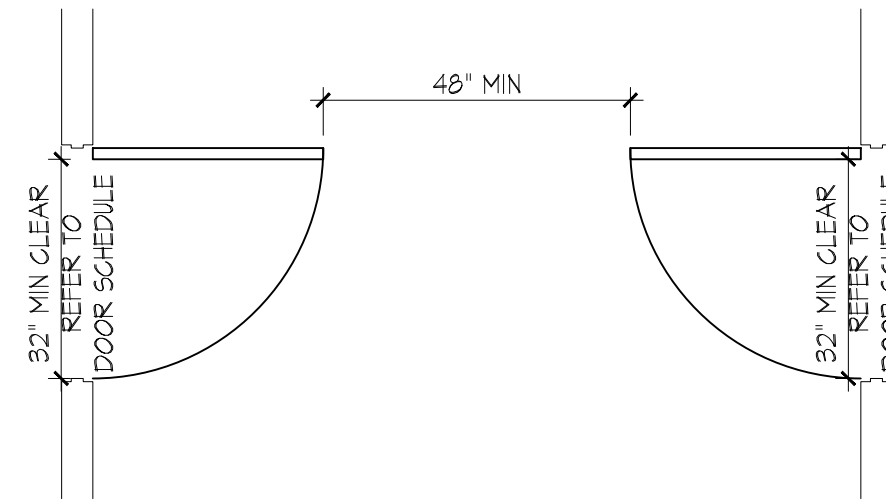
2 ADA DOOR WIDTH
NOT TO SCALE



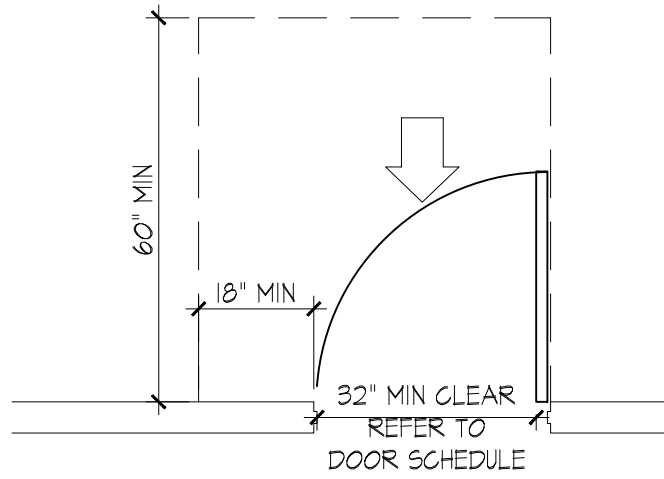
TWO DOORS IN SERIES CLEARANCES



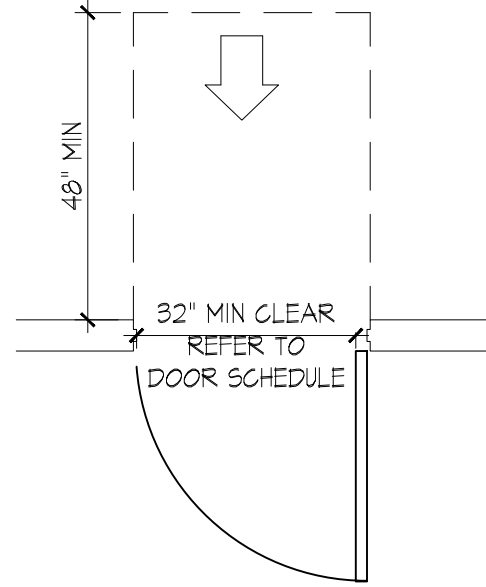
TWO DOORS IN SERIES CLEARANCES



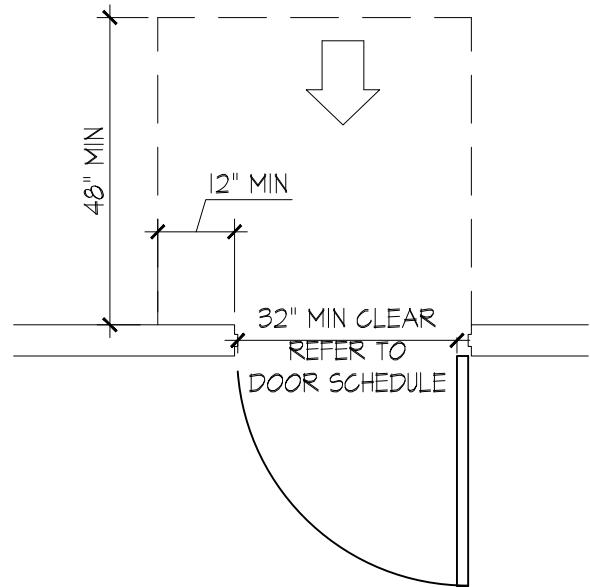
TWO DOORS IN SERIES CLEARANCES



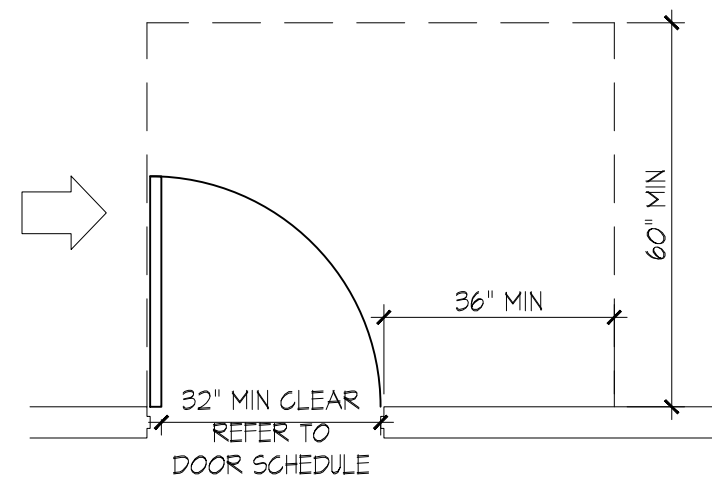
PULL SIDE, FRONT APPROACH
(WITH OR WITHOUT CLOSER)



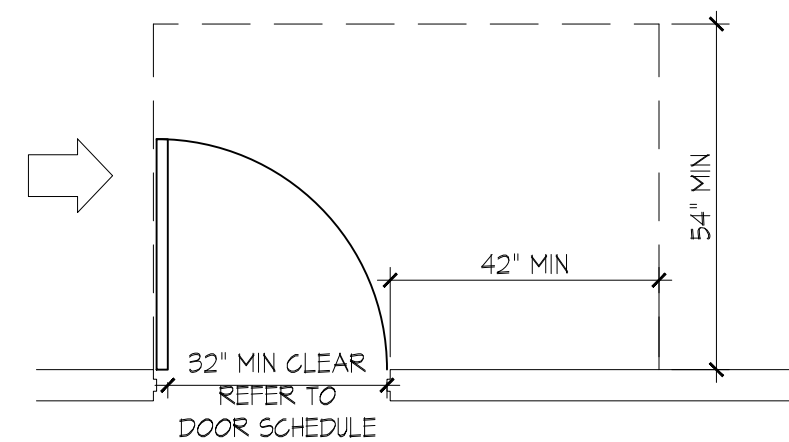
PUSH SIDE, FRONT APPROACH
(WITHOUT CLOSER)



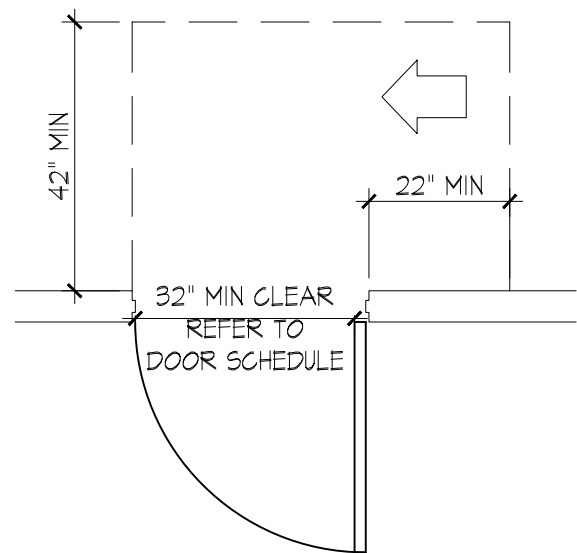
PUSH SIDE, FRONT APPROACH
(WITH CLOSER)



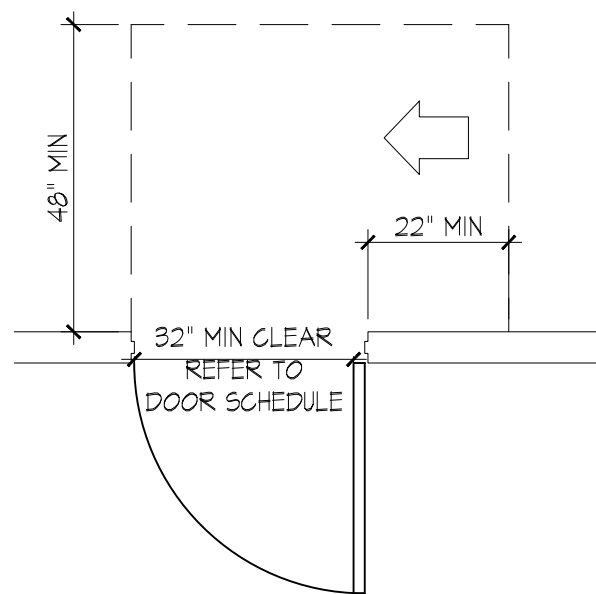
PULL SIDE, HINGE APPROACH -
ALTERNATE 1
(WITH OR WITHOUT CLOSER)



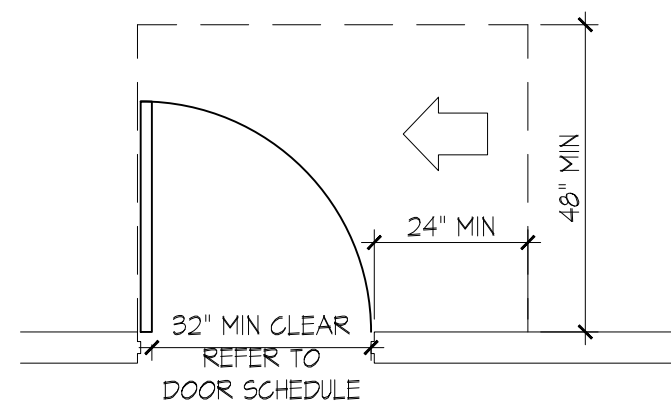
PULL SIDE, HINGE APPROACH -
ALTERNATE 2
(WITH OR WITHOUT CLOSER)



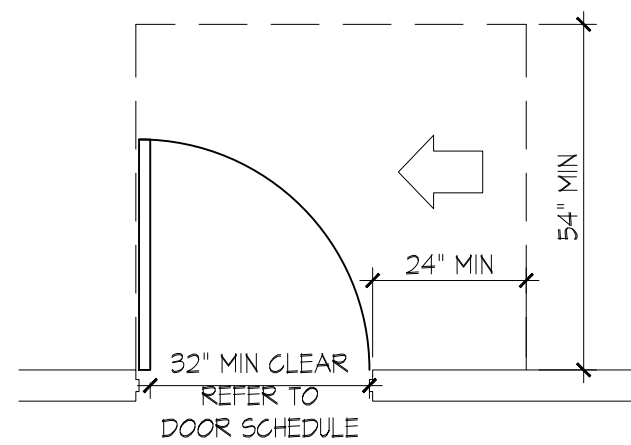
PUSH SIDE, HINGE APPROACH
(WITHOUT CLOSER)



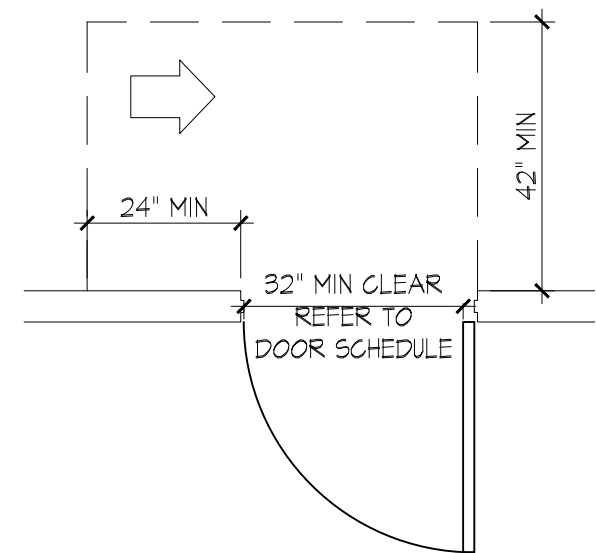
PUSH SIDE, HINGE APPROACH
(WITH CLOSER)



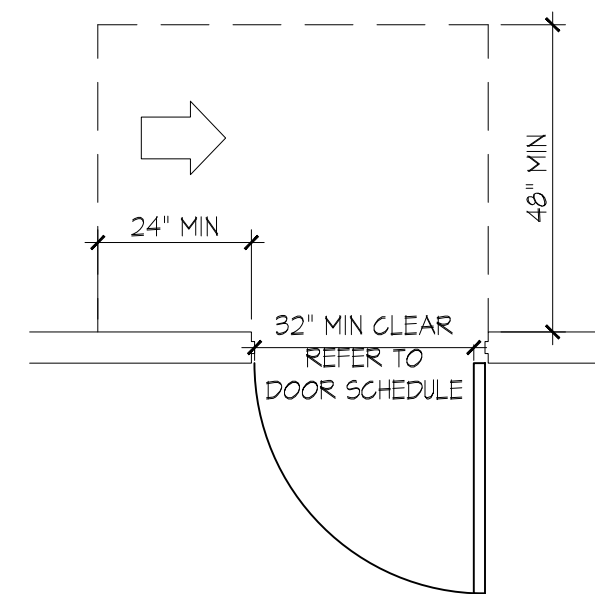
PULL SIDE, LATCH APPROACH
(WITHOUT CLOSER)



PULL SIDE, LATCH APPROACH
(WITH CLOSER)



PUSH SIDE, LATCH APPROACH
(WITHOUT CLOSER)



PUSH SIDE, LATCH APPROACH
(WITH CLOSER)

1 ADA DOOR CLEARANCES
NOT TO SCALE

RESTROOM RENOVATION PURCHASE COLLEGE

STATE UNIVERSITY OF NEW YORK

735 Anderson Hill Rd.
Purchase, NY 10577

PHASE 2:
MUSIC BUILDING
DANCE BUILDING
PHYS. ED. BUILDING
LIBRARY

Conditions

ALL IDEAS, DESIGNS, ARRANGEMENTS AND PLANS INDICATED OR REPRESENTED BY THIS DRAWING ARE OWNED BY, AND THE PROPERTY OF, RONNETTE RILEY ARCHITECT AND WERE CREATED, EVOLVED AND DEVELOPED FOR THE USE ON, AND IN CONNECTION WITH THE SPECIFIED PROJECT. NONE OF SUCH IDEAS, DESIGNS, ARRANGEMENTS OR PLANS SHALL BE USED BY OR DISCLOSED TO ANY PERSON, FIRM OR CORPORATION FOR ANY PURPOSE WHATSOEVER WITHOUT THE WRITTEN PERMISSION OF RONNETTE RILEY ARCHITECT.

© Copyright Ronnette Riley Architect 2020

Ronnette Riley Architect

494 Eighth Avenue, 15th Floor
New York, NY 10001
T 212 594 4015
F 212 594 2868
www.ronnetteriley.com

MEP Engineer

SETTY & Associates, Ltd
535 Eighth Avenue, Suite 215
New York, NY 10018
T 646 253 9000
F 646 224 8497

Rev	Date	Issue
29 April 2022	Issue for Bid	

ADA DOOR DETAILS

Date	01-16-2020
Project No.	1944
Drawing By	SJ, CQ
CHK By	SN
Scale	AS NOTED

DOB Rev

A-005.00
#