

- A. EXISTING WORK SHOWN IS BASED ON AVAILABLE DOCUMENTATION AND SPOT CHECKS ON SURVEY. CONTRACTOR TO FIELD VERIFY EXISTING CONDITIONS AND COORDINATE WITH ENGINEER PRIOR TO PROCEEDING WITH WORK.
- B. THE DEMOLITION PLAN IS INTENDED TO PROVIDE THE CONTRACTOR WITH A GENERAL KNOWLEDGE OF THE EXISTING CONDITIONS WITHIN THE PROJECT AREA.
- C. CONTRACTOR SHALL SCHEDULE ALL WORK IN ACCORDANCE WITH OWNER'S REQUIREMENTS.
- D. CONTRACTOR TO FIELD COORDINATE ALL REMOVAL/ STORAGE/DISPOSAL OF EXISTING EQUIPMENT WITH THE OWNER.
- E. CONTRACTOR TO COORDINATE WITH ARCHITECT AND STRUCTURAL ENGINEER TO PATCH AND REPAIR AREAS AFFECTED BY DEMOLITION WORK.
- F. CONTRACTOR TO REINSTALL ALL THERMOSTATS OR SENSORS AFFECTED BY DEMOLITION.

1. REMOVE EXISTING EXHAUST GRILLE AND ASSOCIATED DUCTWORK, ACCESSORIES, FITTINGS, HANGERS AND SUPPORTS FROM POINT OF DISCONNECTION SHOWN.
2. DISCONNECT AND RELOCATE EXISTING SUPPLY AIR GRILLE. CAP AND SEAL DUCT OPENING AIR TIGHT. SEE NEW WORK PLAN ON DWG. 2/M-101.00 FOR EXACT LOCATION.

1. PROVIDE EXHAUST LINEAR DIFFUSER AT THE LOCATION SHOWN AND COORDINATE WITH ARCH. RCP. (TYP.)
2. ALL UNUSED DUCT OPENINGS SHALL BE CAP AND SEALED AIR TIGHT.
3. TAB CONTRACTOR TO BALANCE RELOCATED SUPPLY AIR GRILLE TO AIRFLOW SHOWN ON PLANS.
4. PROVIDE DOOR LOUVER OF 0.4 SQ FT WITH 100% FREE AREA.

735 Anderson Hill Rd.
Purchase, NY 10577

MUSIC BUILDING
DANCE BUILDING
PHYS. ED. BUILDING
LIBRARY

Conditions

ALL IDEAS, DESIGNS, ARRANGEMENTS AND PLANS INDICATED OR REPRESENTED BY THIS DRAWING ARE OWNED BY, AND THE PROPERTY OF RONNETTE RILEY ARCHITECT AND WERE CREATED, EVOLVED AND DEVELOPED FOR THE USE ON, AND IN CONNECTION WITH THE SPECIFIED PROJECT.

NONE OF SUCH IDEAS, DESIGNS, ARRANGEMENTS OR PLANS SHALL BE USED BY OR DISCLOSED TO ANY PERSON, FIRM OR CORPORATION FOR ANY PURPOSE WHATSOEVER WITHOUT THE WRITTEN PERMISSION OF RONNETTE RILEY ARCHITECT.

© Copyright Ronnette Riley Architects 2020

494 Eighth Avenue, 15th Floor
New York, NY 10001
T 212 594 4015
F 212 594 2868
www.ronnetteriley.com

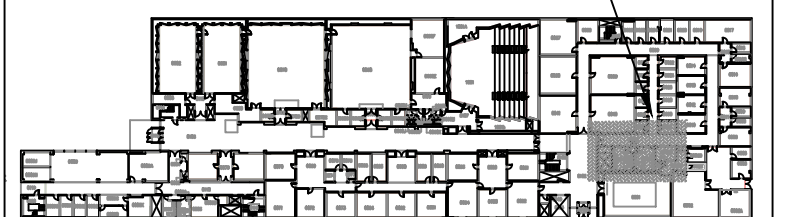
MEP Engineer

SETTY & Associates, Ltd
149 W 36th Street, 8th floor
New York, NY 10018
T 646 253 9000
F 646 224 8497

Rev	Date	Issue
	29 April 2022	Issue for Bid

KEY PLAN

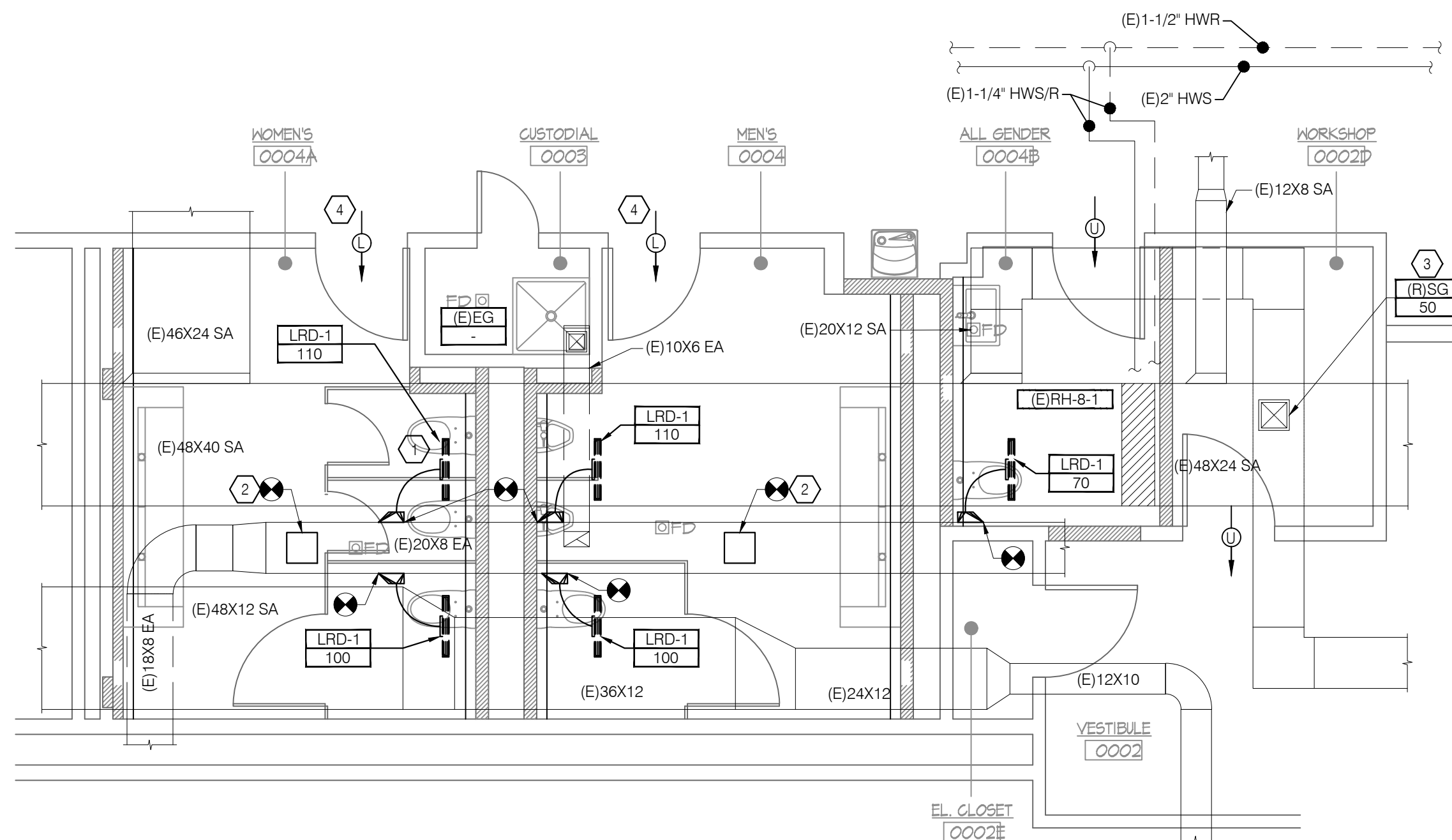
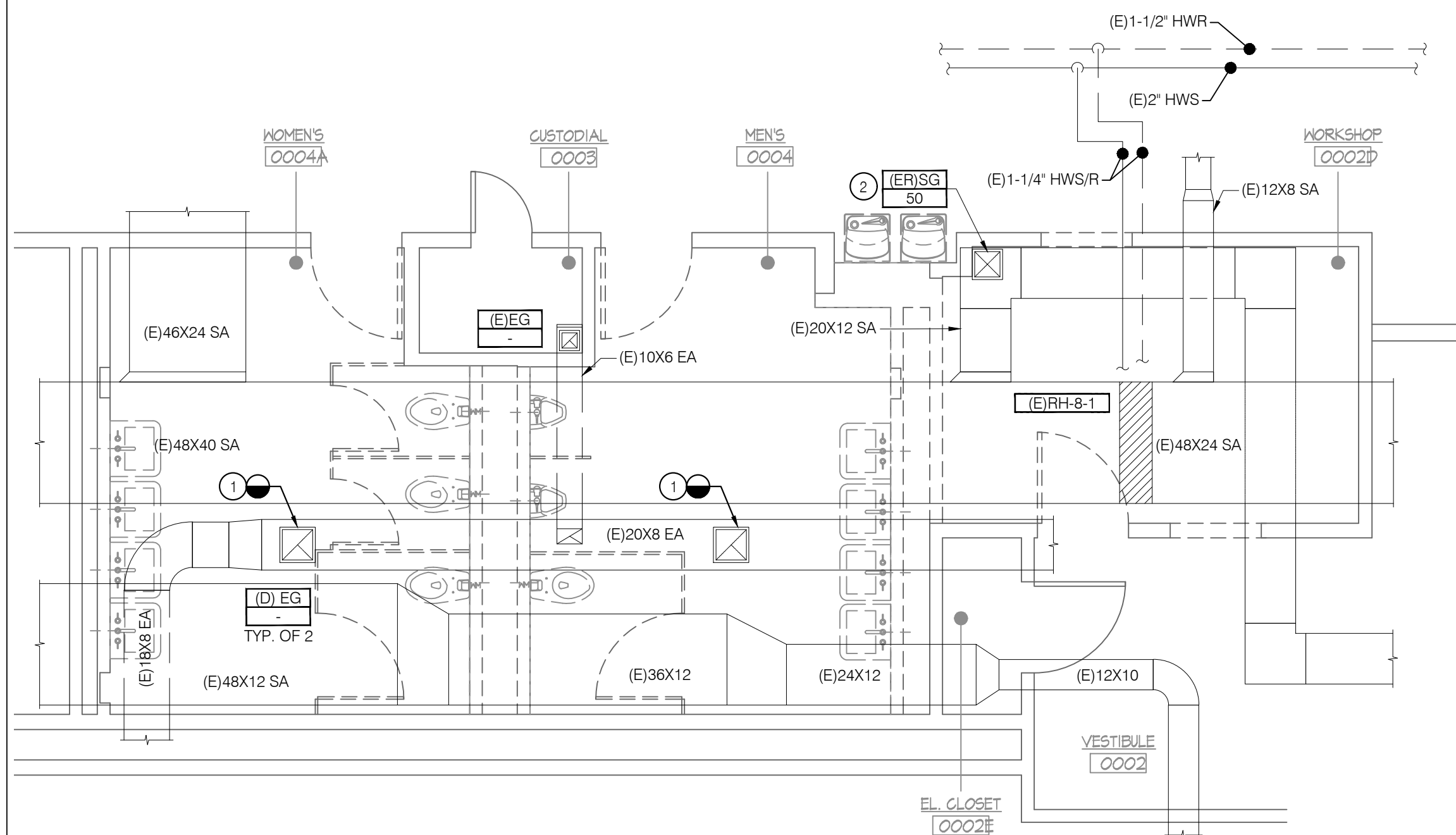
AREA OF WORK —



Title
MUSICAL INSTRUCTIONAL
FACILITIES - MECHANICAL
PLANS

Date	01-16-2020
Project No.	1944
Drawing By	AKV
CHK By	BS
Scale	AS NOTED

DOB Rev
M-101.00



1

BASEMENT LEVEL PLAN - MECHANICAL REMOVALS

M-101.00

SCALE: 1/4" = 1'-0"

2

BASEMENT LEVEL PLAN - MECHANICAL NEW WORK

M-101.00

SCALE: 1/4" = 1'-0"

