



## SHEET KEY NOTES

1. PROVIDE NEW GRATE FOR EXISTING FLOOR DRAIN.

## RESTROOM RENOVATION PURCHASE COLLEGE

STATE UNIVERSITY OF NEW YORK

735 Anderson Hill Rd.  
Purchase, NY 10577

### PHASE 2:

MUSIC BUILDING  
DANCE BUILDING  
PHYS. ED. BUILDING  
LIBRARY

#### Conditions

ALL IDEAS, DESIGNS, ARRANGEMENTS AND PLANS INDICATED OR REPRESENTED BY THIS DRAWING ARE OWNED BY, AND THE PROPERTY OF, RONNETTE RILEY ARCHITECT AND WERE CREATED, DEVELOPED AND DEVELOPED FOR THE USE OF, AND IN CONNECTION WITH THE NONE OF SUCH IDEAS, DESIGNS, ARRANGEMENTS OR PLANS SHALL BE USED BY OR DISCLOSED TO ANY PERSON, FIRM OR CORPORATION FOR ANY PURPOSE WHATSOEVER WITHOUT THE WRITTEN PERMISSION OF RONNETTE RILEY ARCHITECT.

© Copyright Ronnette Riley Architect 2020

#### Ronnette Riley Architect

494 Eighth Avenue, 15th Floor  
New York, NY 10001  
T 212 594 4015  
F 212 594 2868  
www.ronnetteriley.com

#### MEP Engineer

SETTY & Associates, Ltd  
149 W 36th Street, 8th floor  
New York, NY 10018  
T 646 253 9000  
F 646 224 8497

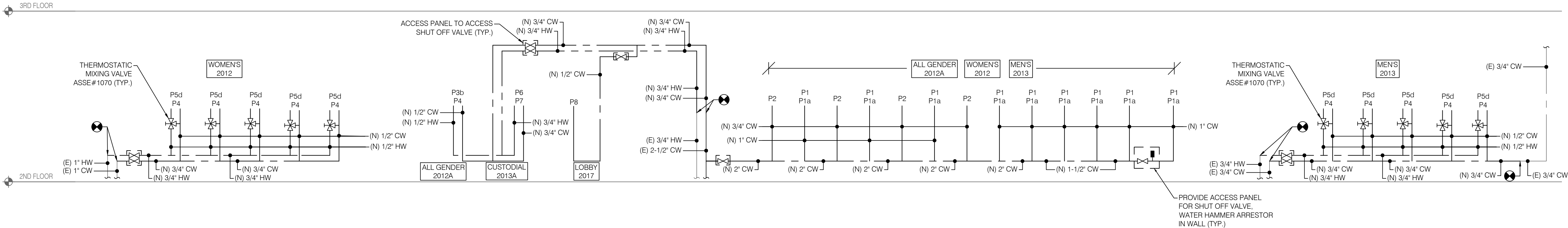
Rev Date Issue  
05 May 2022 Issue for Bid

## PHYSICAL EDUCATION - PLUMBING RISER DIAGRAMS

Date 01-16-2020  
Project No. 1944  
Drawing By CHS  
CHK By KB  
Scale AS NOTED

DOB Rev

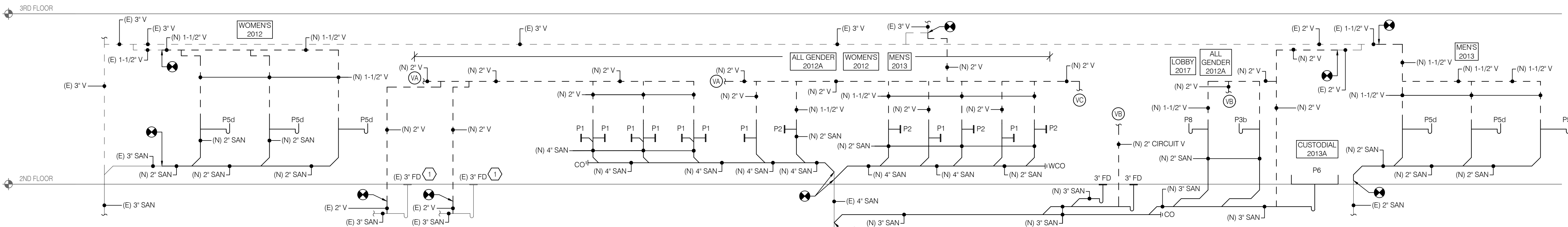
P-503.00



1

### PARTIAL WATER RISER DIAGRAM (PHYSICAL EDUCATION BUILDING)

SCALE: NOT TO SCALE



2

### PARTIAL SANITARY RISER DIAGRAM (PHYSICAL EDUCATION BUILDING)

SCALE: NOT TO SCALE