
ADDENDUM 1

All sketches and modifications are to be incorporated into final bid documents.
This Addendum consists of the following Parts:

| | | |
|--------|--|----------|
| Part 1 | Division #0, Bidding and Contract Requirements..... | Not Used |
| Part 2 | Technical Changes, Architectural, Structural and Civil | |
| Part 3 | Technical Changes, Mechanical and Electrical..... | Not Used |
| Part 4 | Drawing Changes, Architectural/Civil | |
| Part 5 | Drawing Changes, Structural..... | Not Used |
| Part 6 | Drawing Changes, Mechanical and Electrical..... | Not Used |
| Part 7 | Clarifications | |
| Part 8 | List of Included Documents | |

Part 2 Technical Changes, Architectural, Structural and Civil

1. Specification Section 004100 Proposal Form
 - a. Attachment #1 – Schedule of Alternate Proposals – Subsection C - Remove any reference to Alternate #3 – Removal & Replacement of Gymnasium Hardwood Flooring System. Alternates #4 & #5 are to remain as listed.
2. Specification Section 064020 Interior Architectural Woodwork
 - a. Part 1.1.B Millwork scope - Add the following scope:
 - i. Wood Monitor Wall Trim
 - ii. Trim at Vestibule Breakout Room
 - iii. Cafeteria and related Quartz wall cap at half-height wall.
3. Specification Section 093100 Ceramic Tiling
 - a. Part 2.3.D.6 – Ceramic Wall Tile T4 – Change Location to **CAFETERIA**
4. Specification Section 095113 – Acoustical Panel Ceilings
 - a. Part 2.2.B – ACT 1 – Change “Provide panels to match existing;” to read **Provide panels to match existing as scheduled in renovated areas.**
5. Specification Section 095429 – Wood Plank Ceiling Systems
 - a. Part 1.7.A.1 – Add to end of sentence **Cutting and custom adjustments to be included in base price.**
 - b. Part 2.2.A – Change “Flat Veneered Wood Planks System (ACTWD-3)” to read **Flat Veneered Wood Planks System (ACT-3)**
6. Specification Section 096813 – Tile Carpeting
 - a. Part 2.2.E Resilient Stair Nosing: Add **at Stair C and B. Color to be selected from manufacturers full line of colors.**
7. Specification Section 101000 – Visual Display Surfaces
 - a. Part 2.3.A – Change “for each markerboard provided” to read for **each TYPE GM-2 markerboard provided.** - at end of 2nd sentence.
 - b. Part 1.3.A.3 – change “Sizes: as indicated on Drawings” to read **Sizes: 4’-0” wide x 6’-8” high – set directly above scheduled base as field conditions allow and as located on Drawings**
8. Specification Section 122413 – Roller Window Shades
 - a. Part 2.3.A.2 – change “Location: Interior at Library and at Breakout Rooms” to read **Location: Interior at Library Breakout Rooms**

Part 4 Drawing Changes, Architectural/Civil

2. Drawing A102 Overall 2nd Floor Demolition Plan

-
- a. In Gymnasium #226, remove any reference to demolition notes 24, 25 & 26 and note that reads "Exist Perimeter Equip to Remain – Protect from Damage During all Phases of Construction – TYP.
 - b. Demolition Keynote Schedule – remove any reference to Demolition Keynotes 24, 25 & 26.
 3. Drawing A105 Enlarged Demolition Plans & Sections
 - a. Plan 1/A105 – extended saw cut trench from 12'-8" to 14'-8" – see attached ASK-01
 4. Drawing A401 Enlarged Plans
 - a. Removed 'H2' window from Media Center room # 263A – see attached ASK-03
 - b. Relocated Cafeteria half wall 2'-0" closer to columns – see attached ASK-01
 - c. Extended Cafeteria floor trench patch 2'-0" 1/A401– see attached ASK-01
 - d. Add Monitor Device Elevation – see attached ASK-04
 - e. Added Glass Marker Boards to Breakout Rooms SV-2, 3, 4 & 5 and V-101 – see attached ASK-02
 - f. 4/A401 Library Floor Plan – Existing Window Note along east wall of Library to read: EXISTING WINDOWS **AND ROLLER SHADES** TO REMAIN – PROTECT FROM DAMAGE DURING ALL PHASES OF CONSTRUCTION – TYP.
 - g. Added Roller Shade note to Breakout-1 Room SV-2 – see attached ASK-02
 5. Drawing A403 Vestibule and Library Elevations & Details
 - a. Remove 'H2' window from Elevation 6/A403 – see attached ASK-03
 6. Drawing A601 Enlarged RCPS
 - a. 1/A601 Cafeteria RCP – Relocated light fixture Type C in plan and added noted – see attached ASK-05
 - b. 2/A601 Partial Vestibule RCP – added (4) Type 'B' light fixtures to Breakout Space V-101
 7. Drawing A903 Interior Frame Types and AI Frame Types
 - a. Revised Window Elevation H3 – Media Center to show all dimensions – see attached ASK-04
 8. Drawings A101, A102, A104, A201, A202, A203, A251, A301, A302, A404, etc.
 - a. Add/Alternates note - Remove any reference to Alternate #3 – Removal & Replacement of Gymnasium Hardwood Flooring System.

Part 6 Drawing Changes, Mechanical and Electrical

1. Drawing E405 Fire Alarm Cafeteria and Library Part Plans
 - a. 1/E405 Fire Alarm Cafeteria Part Plan - Relocate wall mounted beam smoke detectors to a north /south position rather than the east /west position shown. Exact location to be approved by architect in the field.
 - b. 1/E405 Fire Alarm Cafeteria Part Plan – the fire alarm speaker/strobe notification device shown on the west wall inside the wrapped bench will be relocated north to be outside the booth. An additional unit will be needed. This new unit to be located on the south wall outside the wrapped bench.
 - c. 2/E405 Fire Alarm Library Office Part Plan - The fire alarm speaker/ strobe notification device conflicts with the wall mounted white boards, therefore these devices will be located in the corner of each room to the north of the current location
2. Drawing E601 Electrical Schedules
 - a. Lighting Fixture Schedule – Fixture Designation 'A' Catalog Number to read AAY7-DA30-D830-J308-~~K308~~-P4-CQ1-D1-F42-E2-WO-APOO and set for 3000k color temperature.
 - b. Lighting Fixture Schedule – Fixture Designation 'A1' Catalog Number to read AAY7-DA30-D830-J308-~~K308~~-P4-CQ1-D1-F42-E2-WO-APOO and set for 3000k color temperature.

Part 7 Clarifications

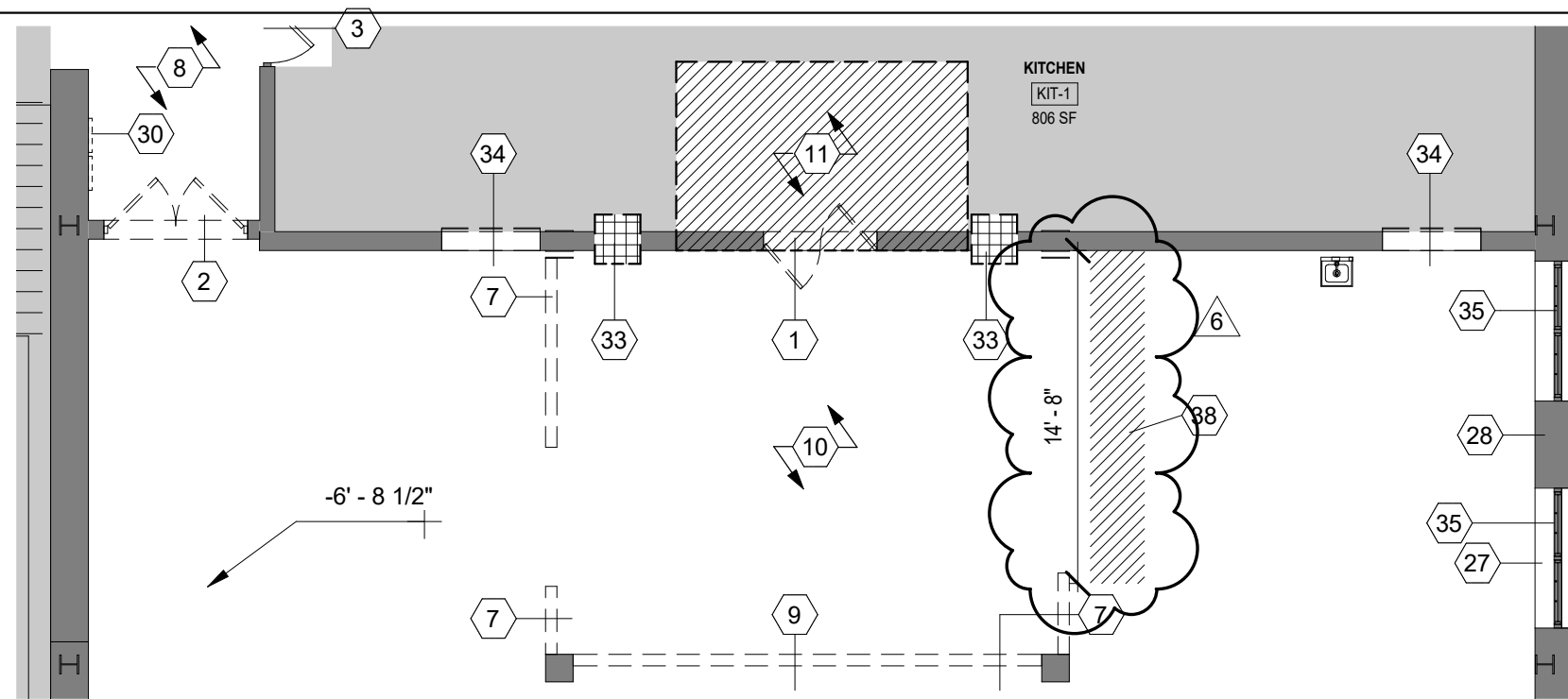
1. Question: Which contract is responsible for installing the structural steel for HVAC equipment?
 - a. Answer: Contract #1- General Contractor

-
2. Question: Which contractor is responsible for setting in place & installing the roof curbs, portals & supports for the HVAC equipment?
 - a. Answer: Contract #1 - General Contractor is responsible for cutting the roof system, providing supplemental steel and all flashings for curbs. Contract #2 HVAC is responsible for supplying, setting, and installing roof curbs, portals and supports for the HVAC equipment.
 3. Question: Which contractor is responsible for providing the required bonded roof work for HVAC contract?
 - a. Answer: Contract #1 – General Contractor
 4. Question: Is there a Spec Section 230548 Vibration Controls for this project.
 - a. Answer: There is not vibration isolation specification section. All DOAS and RTU curbs shall be vibration isolation curbs.
 5. Cutting and patching where openings are larger than 12" in width that will require a lintel shall be performed by the G.C. with rough patching and fire proofing by the trade contractor, finish patching and matching by GC. GC to furnish and install all required supplemental steel as noted in drawings.
 6. Question: There are no asbestos specifications or removal drawings included in the documents, only a report. Please confirm there is no asbestos abatement included in the scope of work.
 - a. Answer: The overall project has been tested by an Environmental Engineer and determined that no asbestos exists in the areas of work other than the gymnasium floor. Since this project was issued for bidding, the Tuckahoe Union Free School District has entered into an agreement with their insurance carrier to repair/replace the existing gymnasium floor system and perform any necessary abatement of the gymnasium floor system.

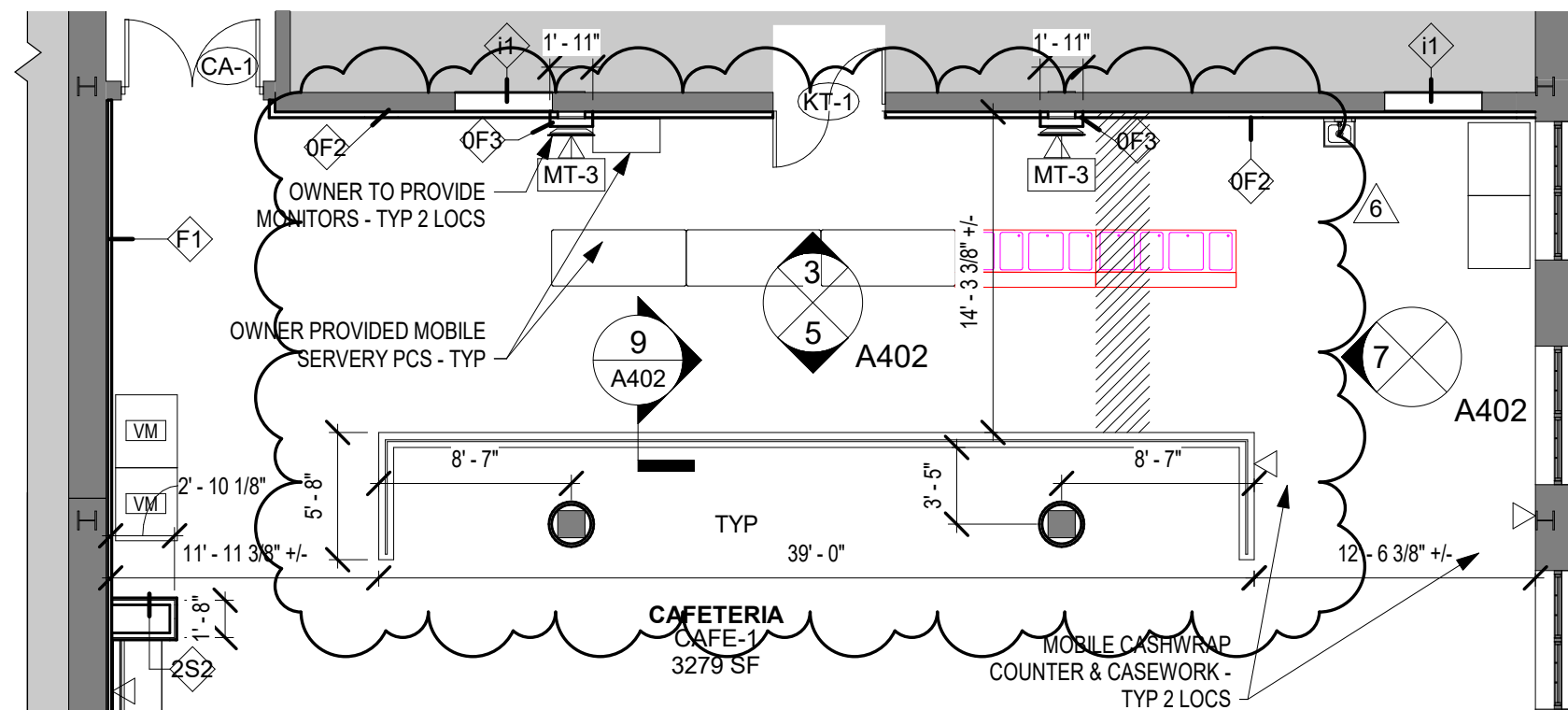
Part 8 List of Included Documents

| | |
|---|--------|
| Drawing ASK-01 – Revised Cafeteria Plans | 1 page |
| Drawing ASK-02 – Breakout Room Glass Marker Board Locations | 1 page |
| Drawing ASK-03 – Revised Library Plan & Elevation | 1 page |
| Drawing ASK-04 – Monitor & Device Elevations | 1 page |
| Drawing ASK-05 – Reflected Ceiling Plan Revisions | 1 page |

**** END OF ADDENDUM NO 1 ****



② PARTIAL CAFETERIA & PIPE ROOM DEMOLITION PLAN ASK-03
1/8" = 1'-0" SEE A105 FOR COMPLETE INFO



① PARTIAL CAFETERIA FLOOR PLAN ASK-03
1/8" = 1'-0" SEE A401 FOR COMPLETE INFO



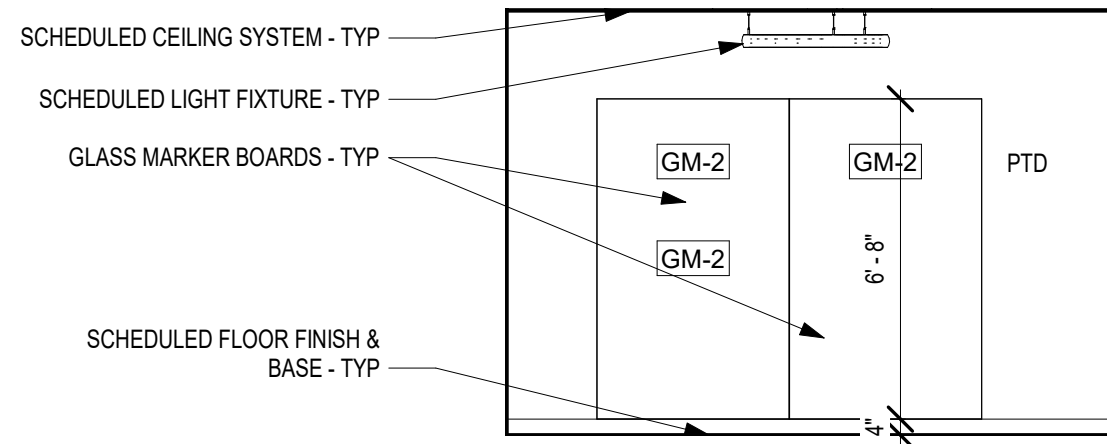
**TUCKAHOE MIDDLE/HIGH SCHOOL
ALTERATIONS**
TUCKAHOE UNION FREE SCHOOL DISTRICT

Sheet Title
REVISED CAFETERIA PLANS

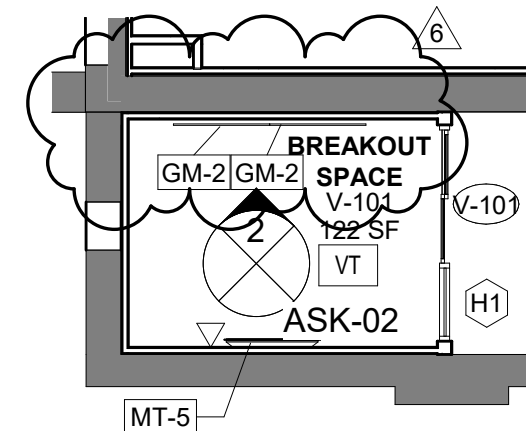
S.E.D. Control No. 66-03-02-03-0-002-024

Job No.
2021-1053
Date
04/19/2022
Scale
1/8" = 1'-0"
Drawn / Checked
Author

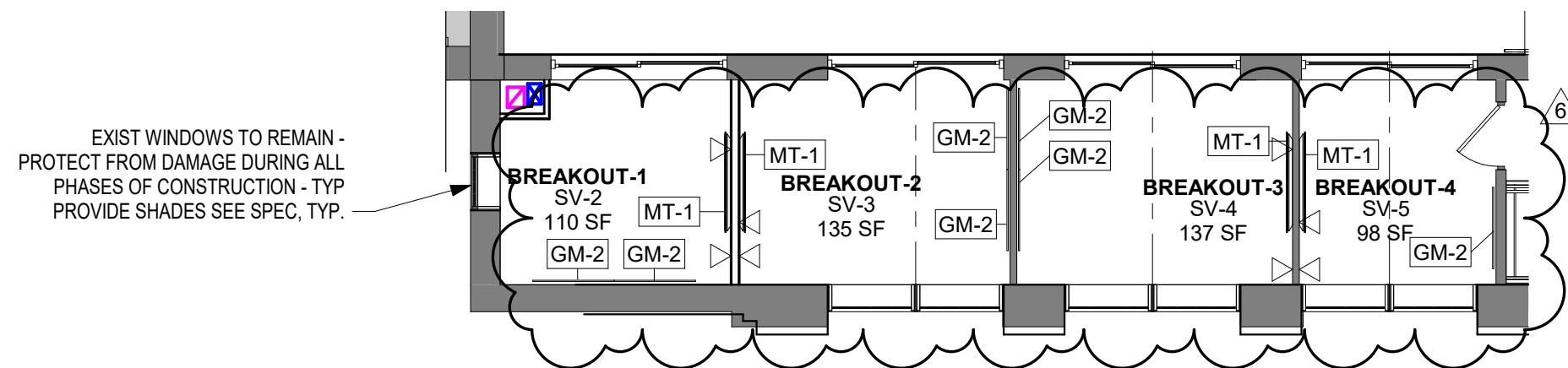
Sheet No.
ASK-01



③ BREAKOUT ROOM GLASS MARKER BOARD ELEVATION
1/4" = 1'-0"



② PARTIAL VESTIBULE BREAKOUT ROOM FLOOR PLAN
1/8" = 1'-0"



① PARTIAL BREAKOUT ROOM FLOOR PLAN ASK-02
1/8" = 1'-0"



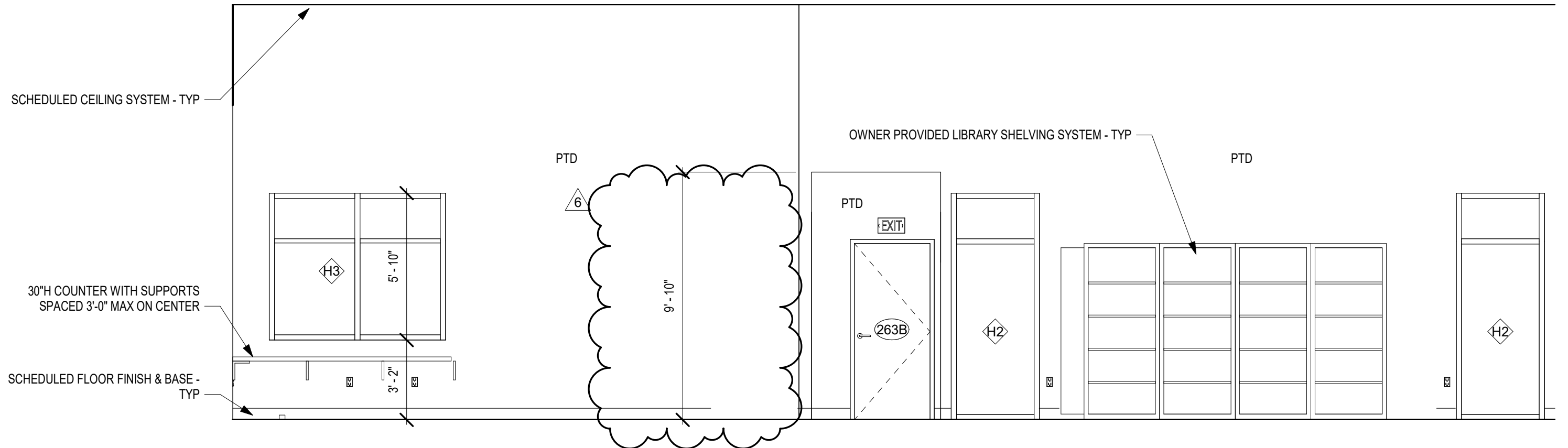
**TUCKAHOE MIDDLE/HIGH SCHOOL
ALTERATIONS**
TUCKAHOE UNION FREE SCHOOL DISTRICT

Sheet Title
**BREAKOUT ROOM GLASS
MARKER BOARD LOCATIONS**

S.E.D. Control No. 66-03-02-03-0-002-024

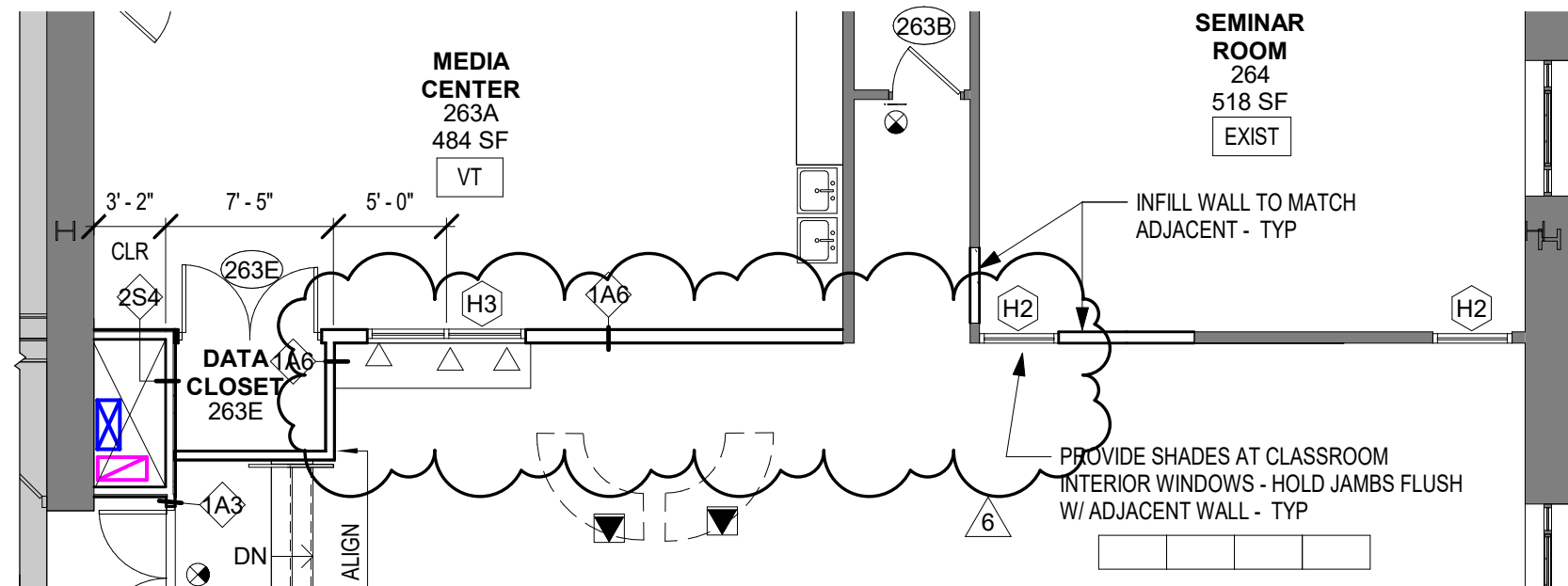
Job No.
2021-1053
Date
04/19/2022
Scale
As indicated
Drawn / Checked
Author

Sheet No.
ASK-02



2 LIBRARY NORTH WALL ELEVATION ASK-01
1/4" = 1'-0"

SEE A403 FOR COMPLETE INFO



1 PARTIAL LIBRARY FLOOR PLAN ASK-01
1/8" = 1'-0"

SEE A401 FOR COMPLETE INFO



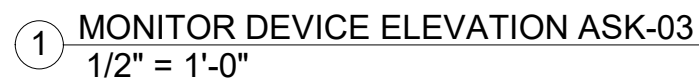
**TUCKAHOE MIDDLE/HIGH SCHOOL
ALTERATIONS**
TUCKAHOE UNION FREE SCHOOL DISTRICT

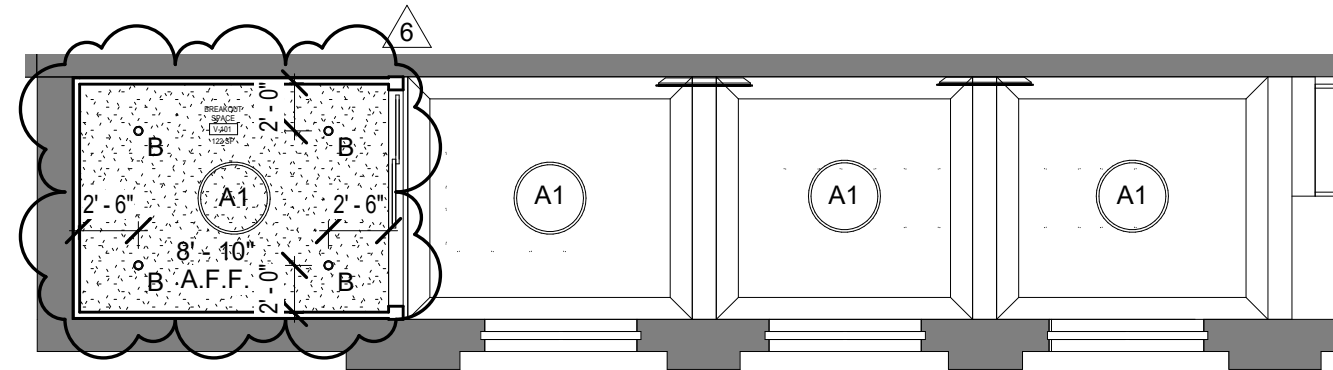
Sheet Title
**REVISED LIBRARY PLAN &
ELEVATION**

S.E.D. Control No. 66-03-02-03-0-002-024

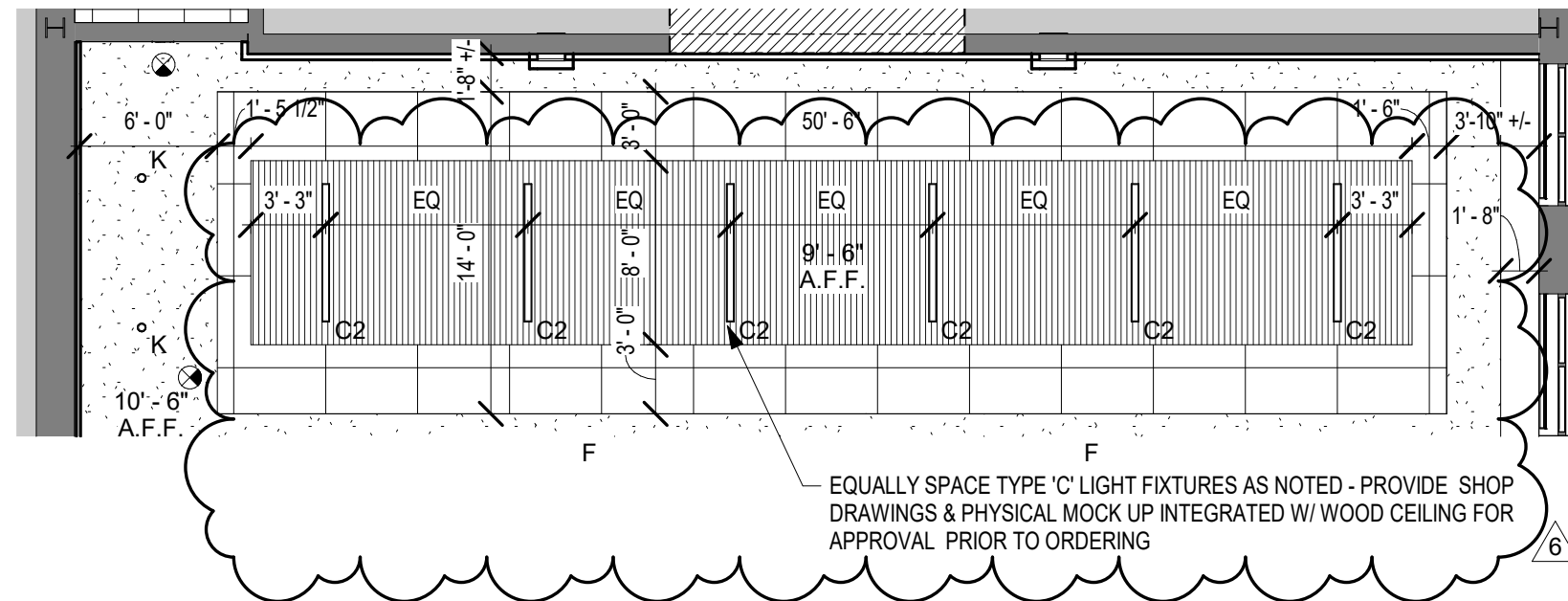
Job No.
2021-1053
Date
04/19/2022
Scale
As indicated
Drawn / Checked
Author

Sheet No.
ASK-03





② PARTIAL VESTIBULE RCP ASK-05
1/8" = 1'-0"



① CAFETERIA RCP ASK-05
1/8" = 1'-0"



TUCKAHOE MIDDLE/HIGH SCHOOL
ALTERATIONS
TUCKAHOE UNION FREE SCHOOL DISTRICT

Sheet Title
**REFLECTED CEILING PLAN
REVISIONS**

S.E.D. Control No. 66-03-02-03-0-002-024

Job No.
2021-1053
Date
04/19/2022
Scale
1/8" = 1'-0"
Drawn / Checked
Author

Sheet No.
ASK-05