

TUCKAHOE
MIDDLE/HIGH
SCHOOL
ALTERATIONS
TUCKAHOE UNION FREE
SCHOOL DISTRICT
65 SIWANOY BLVD
EASTCHESTER, N. Y. 10709



KG+D . ARCHITECTS PC
285 MAIN STREET MOUNT KISCO . NEW YORK . 10549
P-914.666.5900 KGDARCHITECTS.COM

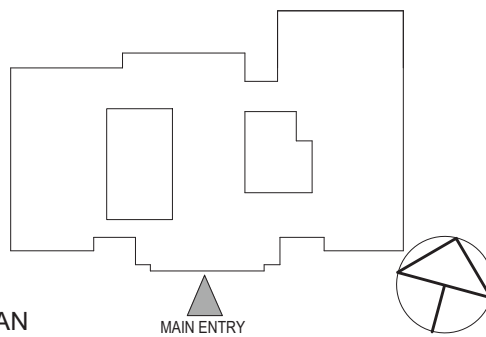


OLA Consulting Engineers
50 Broadway,
Hawthorne, NY 10532
914.747.2800
8 West 38th Street,
Suite 501
New York, NY 10018
646.849.4110
olace.com

NY SED PROJECT CONTROL NO.

66-03-02-03-0-002-024

CONSTRUCTION
DOCUMENTS



KEY PLAN
MAIN ENTRY
NOTE: ALL IDEAS, DESIGNS, ARRANGEMENTS AND PLANS INDICATED OR REPRESENTED BY THIS DRAWING ARE OWNED BY AND ARE THE PROPERTY OF KATYER, GARMENT & DAVIDSON ARCHITECTS, P.C. (KGD), AND WERE CREATED FOR USE ON THIS PROJECT. NONE OF SUCH IDEAS, DESIGNS, ARRANGEMENTS OR PLANS SHALL BE USED BY OR DISCLOSED TO ANY PURPOSE WHATSOEVER WITHOUT THE WRITTEN PERMISSION OF (KGD).

WRITTEN DIMENSIONS ON THIS DRAWING SHALL HAVE PRECEDENCE OVER SCALED DIMENSIONS. CONTRACTOR SHALL VERIFY ALL ACTUAL DIMENSIONS AND CONDITIONS ON THE JOB AND THE ARCHITECT MUST BE NOTIFIED OF ANY VARIATIONS FROM DIMENSIONS AND CONDITIONS SHOWN. SHOP DETAILS MUST BE SUBMITTED TO THIS OFFICE FOR APPROVAL BEFORE PROCEEDING WITH FABRICATION.

ALTERATIONS BY ANY PERSON, IN ANY WAY, OF ANY ITEM CONTAINED ON THIS DOCUMENT, UNLESS ACTING UNDER THE DIRECTION OF THE LICENSED ARCHITECT WHOSE PROFESSIONAL SEAL IS AFFIXED HERETO, IS A VIOLATION OF TITLE V.A. SECT. 60 (1) (b) OF NEW YORK STATE LAW. COPYRIGHT KATYER, GARMENT & DAVIDSON ARCHITECTS & ENGINEERS, P.C. ALL RIGHTS RESERVED.

Professional Seal



2	04/22/2022	BID ADDENDUM #2
1	03/31/2022	ISSUED FOR BID
No.	Date	Issue

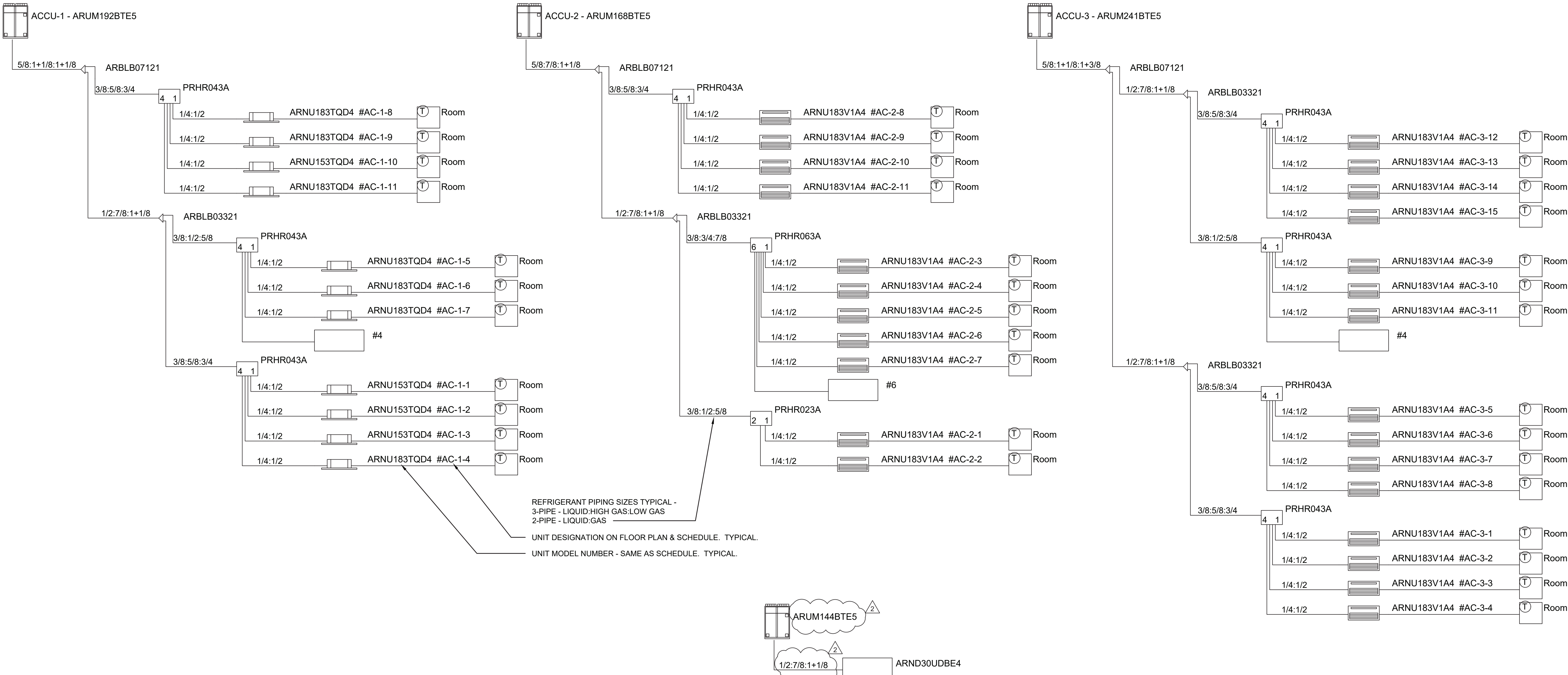
Sheet Title

VRF RISER
DIAGRAMS

Job No.	Date
NKGD0239.00	09/10/2021
Scale	Drawn / Checked
AS NOTED	NW / RS

Sheet Number

M501



NOTES:
1. CONTRACTOR SHALL FIELD MEASURE AND DEVELOP FULL VRF SYSTEM PIPING DIAGRAMS OF EACH OF THE SYSTEMS ABOVE INCLUDING LENGTHS WITH VENDOR FOR ENGINEER REVIEW.

ADD ALTERNATE NOTES

ADD ALTERNATE #1

THE CONTRACTOR SHALL PROVIDE AN ADD ALTERNATE PRICE FOR THE FULL INSTALLATION OF THE FOLLOWING SYSTEMS INCLUDING ALL RELATED INDOOR HEAT PUMP UNITS, REFRIGERANT AND CONDENSATE PIPING, DUCTWORK AND ACCESSORIES, REGISTERS, POWER, FIRE ALARM AND CONTROLS & ANY & ALL DEMOLITION & PATCHING. COORDINATE WITH ARCHITECTURAL AND ELECTRICAL PLANS.

- DOAS UNIT #3, #4, #5 AND ASSOCIATED ACCUs #6, #7, #8
- VRF SYSTEMS ACCUs #2 & #3 AND ALL ASSOCIATED INDOOR HEAT PUMP UNITS

ADD ALTERNATE #2

THE CONTRACTOR SHALL PROVIDE AN ADD ALTERNATE PRICE FOR THE FULL INSTALLATION OF THE FOLLOWING SYSTEMS INCLUDING ALL RELATED INDOOR HEAT PUMP UNITS, REFRIGERANT AND CONDENSATE PIPING, DUCTWORK AND ACCESSORIES, REGISTERS, POWER, FIRE ALARM AND CONTROLS & ANY & ALL DEMOLITION & PATCHING. COORDINATE WITH ARCHITECTURAL AND ELECTRICAL PLANS.

- DOAS UNIT #1 & #2 AND ASSOCIATED ACCUs #4 & #5
- VRF SYSTEM ACCU #1 AND ALL ASSOCIATED INDOOR HEAT PUMP UNITS

TUCKAHOE
MIDDLE/HIGH
SCHOOL
ALTERATIONS

TUCKAHOE UNION FREE
SCHOOL DISTRICT

65 SIWANOY BLVD
EASTCHESTER, N. Y. 10709



KG+D . ARCHITECTS PC

285 MAIN STREET MOUNT KISCO . NEW YORK . 10549

P:914.666.5900

KGDARCHITECTS.COM



OLA Consulting Engineers

50 Broadway,
Hawthorne, NY 10532
914.747.2800

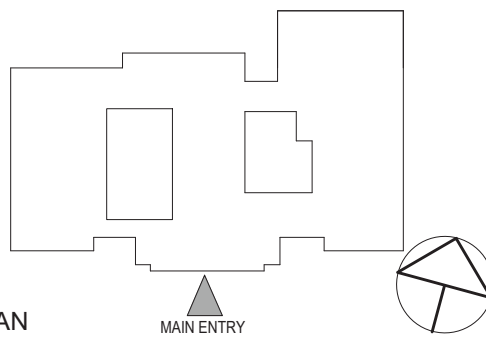
8 West 38th Street,
Suite 501
New York, NY 10018
646.849.4110

olace.com

NY SED PROJECT CONTROL NO.

66-03-02-03-0-002-024

CONSTRUCTION
DOCUMENTS



KEY PLAN

NOTE: ALL IDEAS, DESIGNS, ARRANGEMENTS AND PLANS INDICATED OR REPRESENTED BY THIS DRAWING ARE OWNED BY AND ARE THE PROPERTY OF KARTER, GARMENT & DAVIDSON ARCHITECTS, PC (KG&D), AND WERE CREATED FOR USE ON THIS PROJECT. NONE OF SUCH IDEAS, DESIGNS, ARRANGEMENTS OR PLANS SHALL BE USED BY OR DISCLOSED TO ANY PURPOSE WHATSOEVER WITHOUT THE WRITTEN PERMISSION OF (KG&D).

WRITTEN DIMENSIONS ON THIS DRAWING SHALL HAVE PRECEDENCE OVER SCALED DIMENSIONS. CONTRACTOR SHALL VERIFY ALL ACTUAL DIMENSIONS AND CONDITIONS ON THE JOB AND THE ARCHITECT MUST BE NOTIFIED OF ANY VARIATIONS FROM DIMENSIONS AND CONDITIONS SHOWN. SHOP DETAILS MUST BE SUBMITTED TO THIS OFFICE FOR APPROVAL BEFORE PROCEEDING WITH FABRICATION.

ALTERATIONS BY ANY PERSON, IN ANY WAY, OF ANY ITEM CONTAINED ON THIS DOCUMENT, UNLESS ACTING UNDER THE DIRECTION OF THE LICENSED ARCHITECT WHOSE PROFESSIONAL SEAL IS AFFIXED HERETO, IS A VIOLATION OF TITLE V.A. SECT. 60 (1) (b) OF NEW YORK STATE LAW. COPYRIGHT KARTER, GARMENT + DAVIDSON ARCHITECTS & ENGINEERS, PC. ALL RIGHTS RESERVED.

Professional Seal



2	04/22/2022	BID ADDENDUM #2
1	03/31/2022	ISSUED FOR BID
No.	Date	Issue

Sheet Title

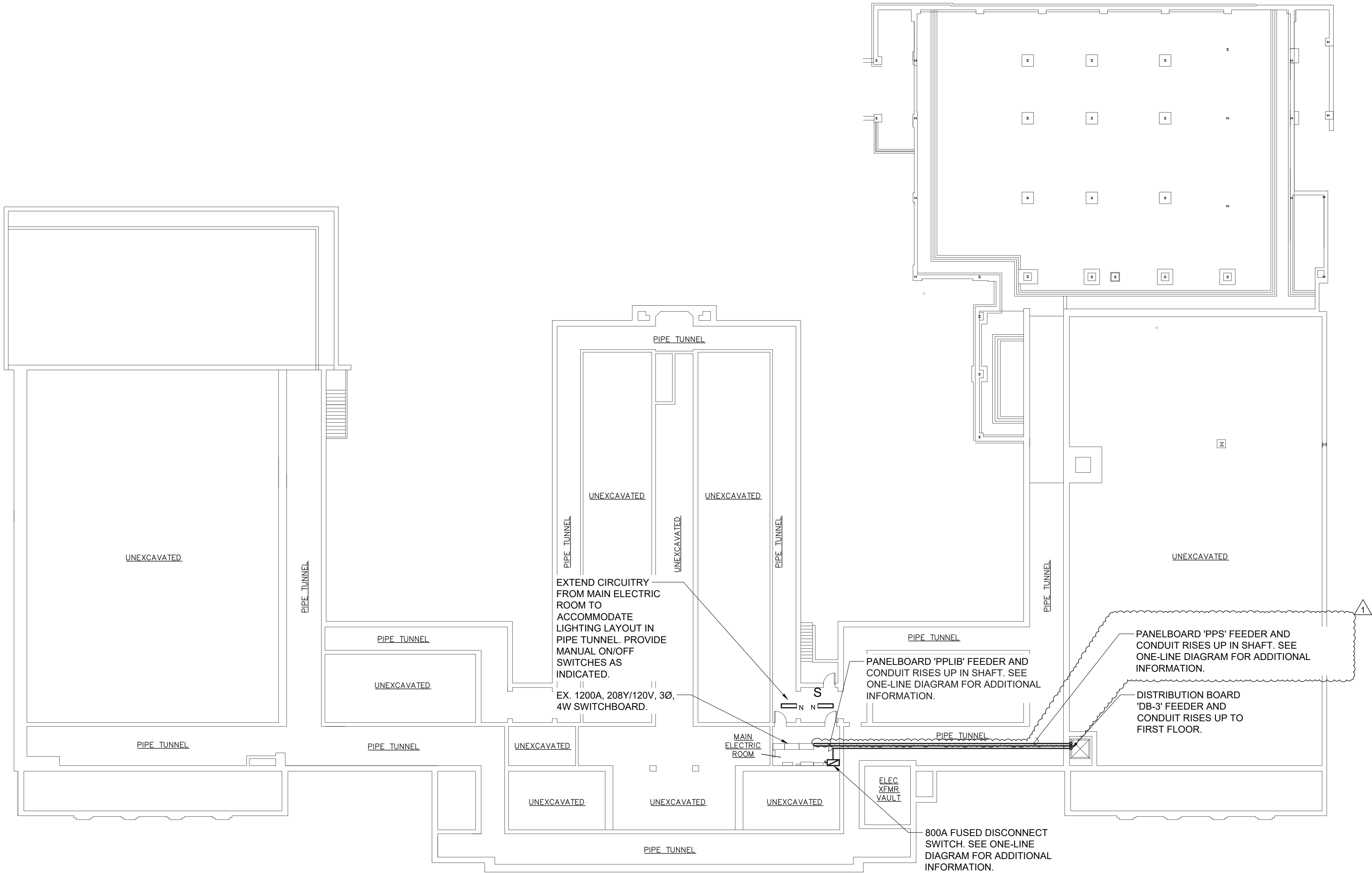
ELECTRICAL
BASEMENT POWER
PLAN

Job No. NKGD0239.00 Date 09/10/2021

Scale AS NOTED Drawn / Checked VB / ML

Sheet Number

E300



1

ELECTRICAL BASEMENT POWER PLAN

SCALE: 1/16" = 1'-0"

TUCKAHOE
MIDDLE/HIGH
SCHOOL
ALTERATIONS
TUCKAHOE UNION FREE
SCHOOL DISTRICT
65 SIWANOY BLVD
EASTCHESTER, N. Y. 10709



KG+D . ARCHITECTS PC
285 MAIN STREET MOUNT KISCO . NEW YORK . 10549
P:914.666.5900 KGDARCHITECTS.COM

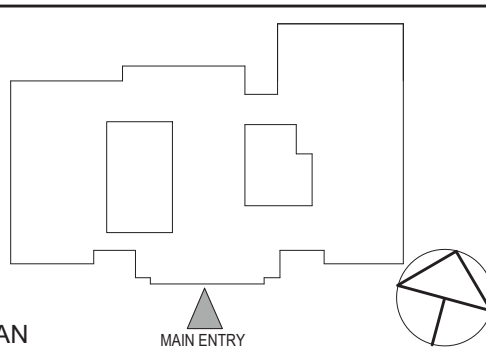


OLA Consulting Engineers
50 Broadway,
Hawthorne, NY 10532
914.747.2800
8 West 38th Street,
Suite 501
New York, NY 10018
646.849.4110
olace.com

NY SED PROJECT CONTROL NO.

66-03-02-03-0-002-024

CONSTRUCTION
DOCUMENTS



KEY PLAN
MAIN ENTRY
NOTE: ALL IDEAS, DESIGNS, ARRANGEMENTS AND PLANS INDICATED OR REPRESENTED BY THIS DRAWING ARE OWNED BY AND ARE THE PROPERTY OF KATZ, GARNETT & DAVIDSON ARCHITECTS, P.C. (KGD), AND WERE CREATED FOR USE ON THIS PROJECT. NONE OF SUCH IDEAS, DESIGNS, ARRANGEMENTS OR PLANS SHALL BE USED BY OR DISCLOSED TO ANY PURPOSE WHATSOEVER WITHOUT THE WRITTEN PERMISSION OF (KGD).

WRITTEN DIMENSIONS ON THIS DRAWING SHALL HAVE PRECEDENCE OVER SCALED DIMENSIONS. CONTRACTOR SHALL VERIFY ALL ACTUAL DIMENSIONS AND CONDITIONS ON THE JOB AND THE ARCHITECT MUST BE NOTIFIED OF ANY VARIATIONS FROM DIMENSIONS AND CONDITIONS SHOWN. SHOP DETAILS MUST BE SUBMITTED TO THIS OFFICE FOR APPROVAL BEFORE PROCEEDING WITH FABRICATION.

ALTERATIONS BY ANY PERSON, IN ANY WAY, OF ANY ITEM CONTAINED ON THIS DOCUMENT, UNLESS ACTING UNDER THE DIRECTION OF THE LICENSED ARCHITECT WHOSE PROFESSIONAL SEAL IS AFFIXED HERETO, IS A VIOLATION OF TITLE V.A. SECT. 60 (1) (b) OF NEW YORK STATE LAW. COPYRIGHT KATZ, GARNETT & DAVIDSON ARCHITECTS & ENGINEERS, P.C. ALL RIGHTS RESERVED.

Professional Seal



2 04/22/2022 BID ADDENDUM #2

1 03/31/2022 ISSUED FOR BID

No. Date Issue

Sheet Title

ELECTRICAL FIRST
FLOOR NEW WORK
PLAN

Job No. NKGD0239.00

Date 09/10/2021

Scale AS NOTED

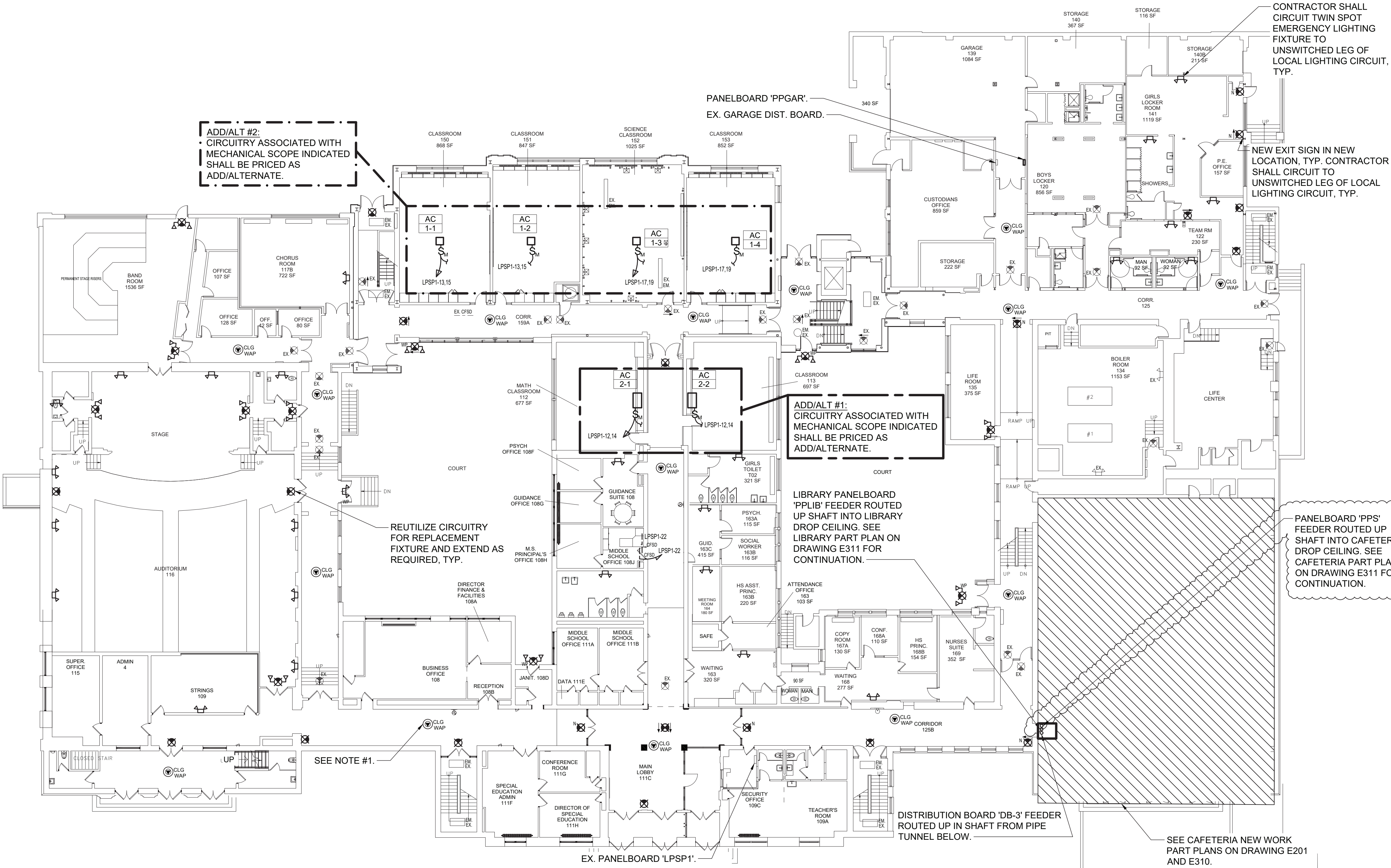
Drawn / Checked VB / ML

Sheet Number

E301

NOTES:

1.) ELECTRICAL CONTRACTOR SHALL WIRE (1) CAT6 CABLE TO EACH DATA POINT SHOWN FROM AN EXISTING DATA RACK IN DATA ROOM 214. SEE DRAWING E302 FOR LOCATION. CAT6 CABLE SHALL BE PLENUM RATED WITHIN PLENUM CEILINGS. ELECTRICAL CONTRACTOR SHALL PROVIDE (2) 48 PORT CAT6 PATCH PANELS FOR INSTALLATION IN EX. DATA RACKS. TERMINATIONS AT DATA POINT AND PATCH PANEL BY ELECTRICAL CONTRACTOR. RJ45 JACKS AND COVER PLATES TO BE PROVIDED BY THE ELECTRICAL CONTRACTOR. TEST AND LABEL EACH END OF CAT6 CABLE.



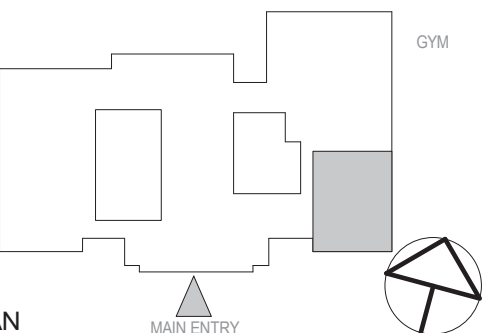
1 ELECTRICAL FIRST FLOOR NEW WORK PLAN
SCALE: 1/16" = 1'-0"

TUCKAHOE
MIDDLE/HIGH
SCHOOL
ALTERATIONS
TUCKAHOE UNION FREE
SCHOOL DISTRICT
65 SIWANOY BLVD
EASTCHESTER, N.Y. 10709

KG+D listen
imagine
build
KG+D . ARCHITECTS PC
285 MAIN STREET MOUNT KISCO . NEW YORK . 10549
P:914.666.5900 KGDARCHITECTS.COM

NY SED PROJECT CONTROL NO.

CONSTRUCTION
DOCUMENTS



NOTE: ALL IDEAS, DESIGNS, ARRANGEMENTS AND PLANS INDICATED OR REPRESENTED BY THIS DRAWING ARE OWNED BY AND ARE THE PROPERTY OF KAYEYER, GARMENT & DAVIDSON ARCHITECTS, P.C. (KGD), AND WERE CREATED FOR USE ON THIS PROJECT. NONE OF SUCH IDEAS, DESIGNS, ARRANGEMENTS OR PLANS SHALL BE USED BY OR DISCLOSED TO ANY PURPOSE WHATSOEVER WITHOUT THE WRITTEN PERMISSION OF KGD.

WRITTEN DIMENSIONS ON THIS DRAWING SHALL HAVE PRECEDENCE OVER SCALED DIMENSIONS. CONTRACTOR SHALL VERIFY ALL ACTUAL DIMENSIONS AND CONDITIONS ON THE JOB AND THE ARCHITECT MUST BE NOTIFIED OF ANY VARIATIONS FROM DIMENSIONS AND CONDITIONS SHOWN. SHOP DETAILS MUST BE SUBMITTED TO THIS OFFICE FOR APPROVAL BEFORE PROCEEDING WITH FABRICATION.

ALTERATIONS BY ANY PERSON, IN ANY WAY, OF ANY ITEM CONTAINED ON THIS DOCUMENT, UNLESS ACTING UNDER THE DIRECTION OF THE LICENSED ARCHITECT WHOSE PROFESSIONAL SEAL IS AFFIXED HERETO, IS A VIOLATION OF TITLE 16, SECT. 60.9 (b) OF NEW YORK STATE LAW.

Copyright 2022, KAYEYER, GARMENT & DAVIDSON ARCHITECTS & ENGINEERS, P.C. ALL RIGHTS RESERVED.

Professional Seal



2	04/19/2022	BID ADDENDUM #1
1	03/31/2022	ISSUED FOR BID
No.	Date	Issue

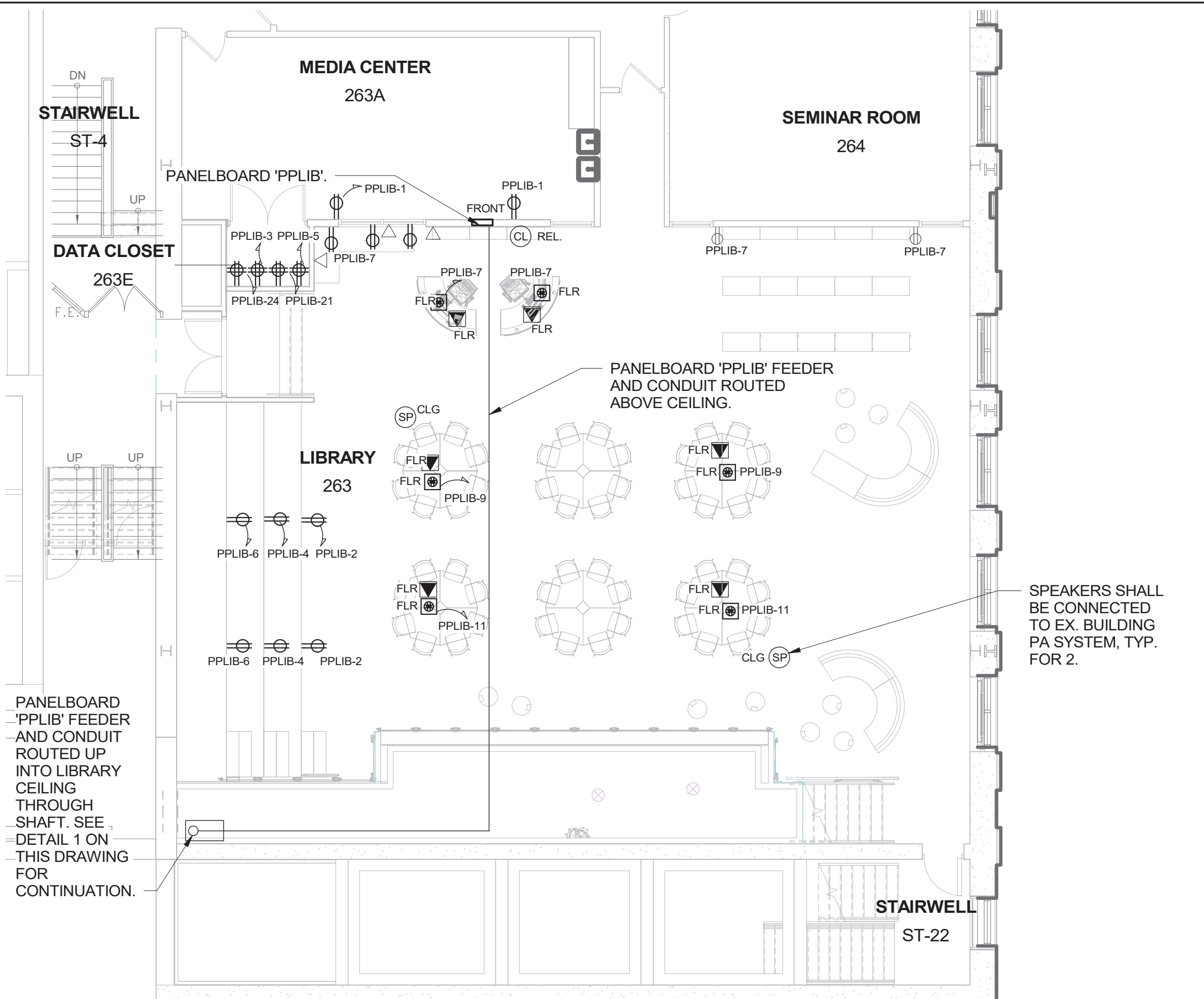
ELECTRICAL
CAFETERIA &
LIBRARY POWER
PART PLAN

Job No.	NKGD0239.00	Date	09/10/2021
Scale	AS NOTED	Drawn / Checked	Author Checker
Sheet Number			

E310

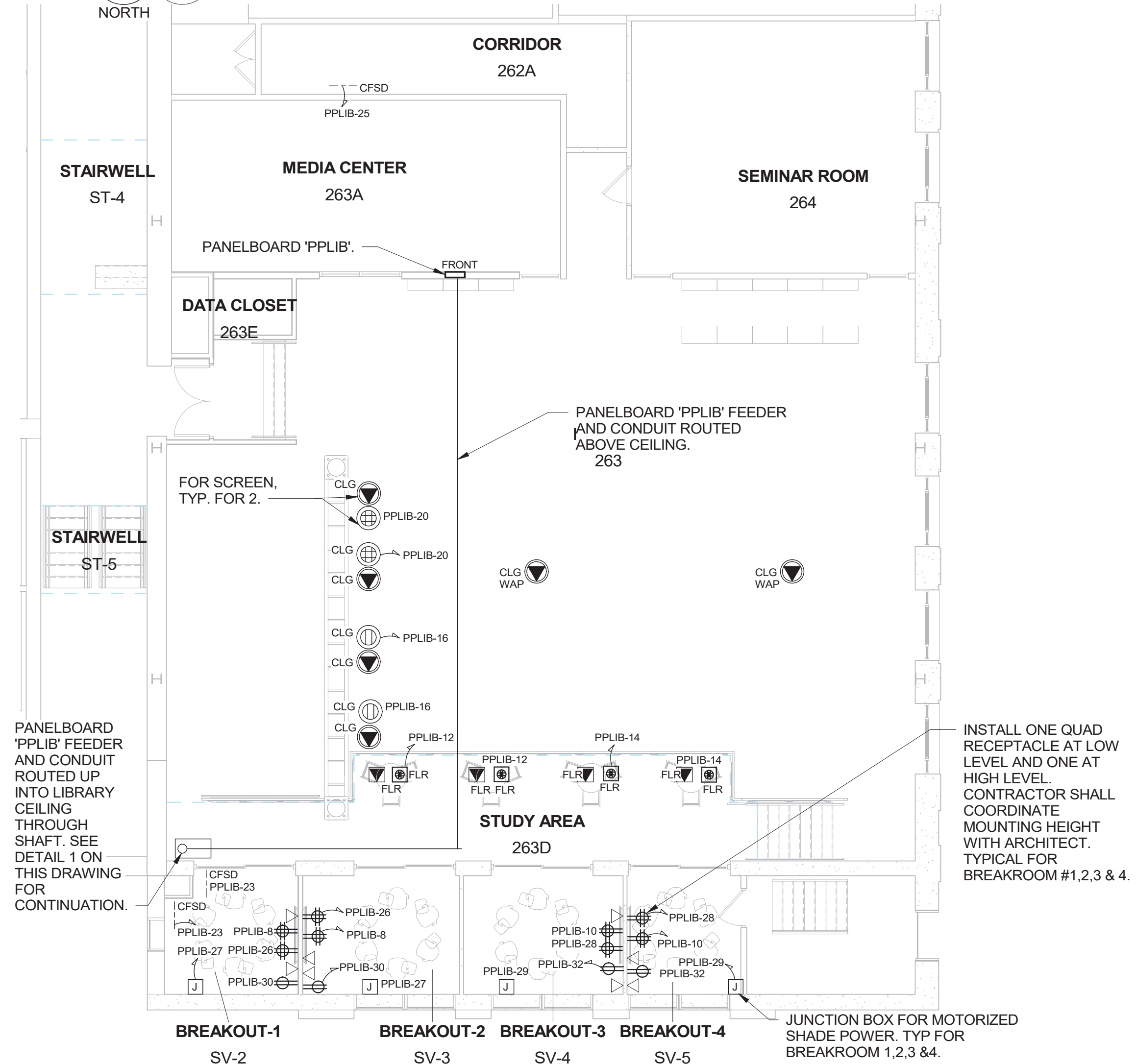
NOTES:

1. RECEPTACLES AT PERIMETER BENCH SHALL BE INSTALLED UNDER BENCH. COORDINATE HEIGHT WITH ARCHITECT. CONTRACTOR SHALL PROVIDE MOCKETT PCS82D (2 POWER, 1 USB-A, 1 USB-C RECEPTACLES) MOUNTED IN BOOTH DESKTOP. COORDINATE INSTALLATION WITH ARCHITECT.
- 2.) ELECTRICAL CONTRACTOR SHALL WIRE (1) CAT6 CABLE TO EACH DATA POINT SHOWN FROM AN EXISTING DATA RACK IN DATA ROOM 214. SEE DRAWING E302 FOR LOCATION. CAT6 CABLE SHALL BE PLENUM RATED WITHIN PLENUM CEILINGS. ELECTRICAL CONTRACTOR SHALL PROVIDE (2) 48 PORT CAT6 PATCH PANELS FOR INSTALLATION IN EX. DATA RACKS. TERMINATIONS AT DATA POINT AND PATCH PANEL BY ELECTRICAL CONTRACTOR. RJ45 JACKS AND COVER PLATES TO BE PROVIDED BY THE ELECTRICAL CONTRACTOR. TEST AND LABEL EACH END OF CAT6 CABLE.
- 3.) COORDINATE SERVERY EQUIPMENT LOCATIONS WITH ARCHITECT.
- 4.) COORDINATE RECEPTACLE NEMA CONFIGURATION WITH SERVERY EQUIPMENT PURCHASED.



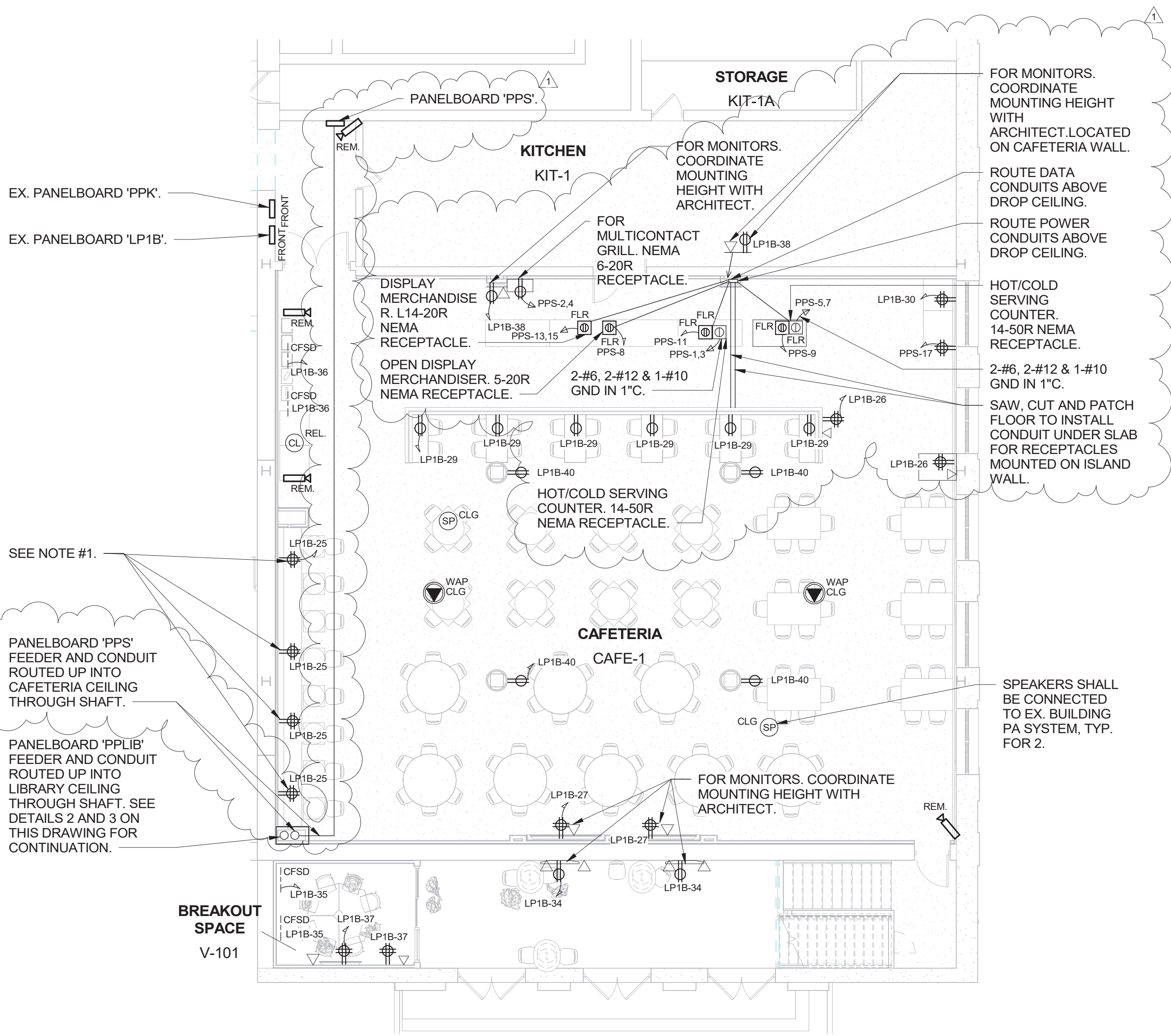
3 LOWER LIBRARY POWER PART PLAN

SCALE: 1/8" = 1'-0"



2 UPPER LIBRARY OFFICE POWER PART PLAN

SCALE: 1/8" = 1'-0"

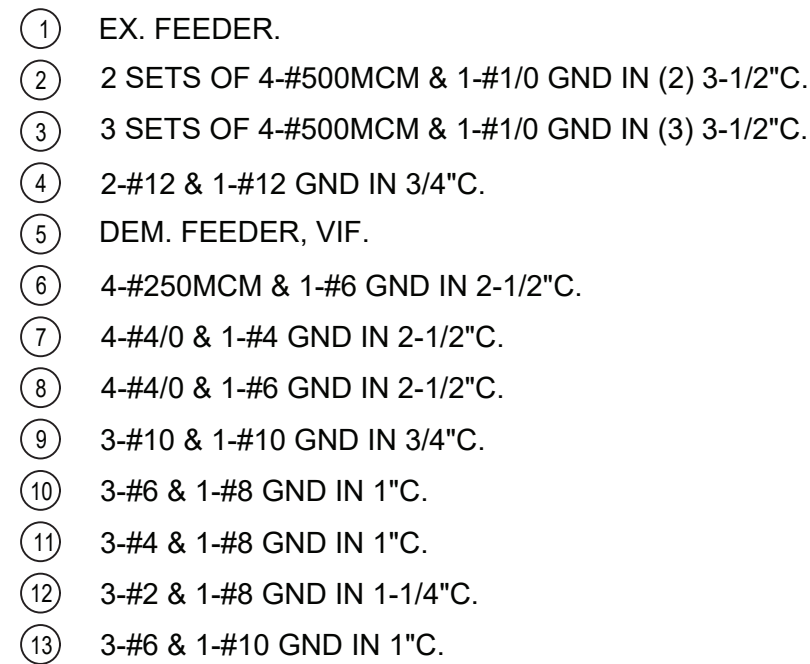


1 CAFETERIA POWER PART PLAN

SCALE: 1/8" = 1'-0"

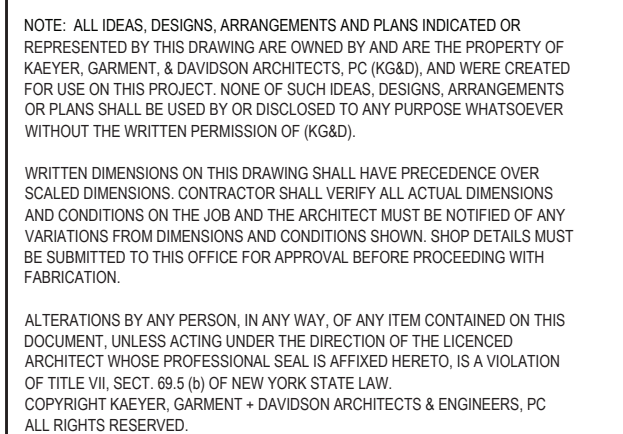
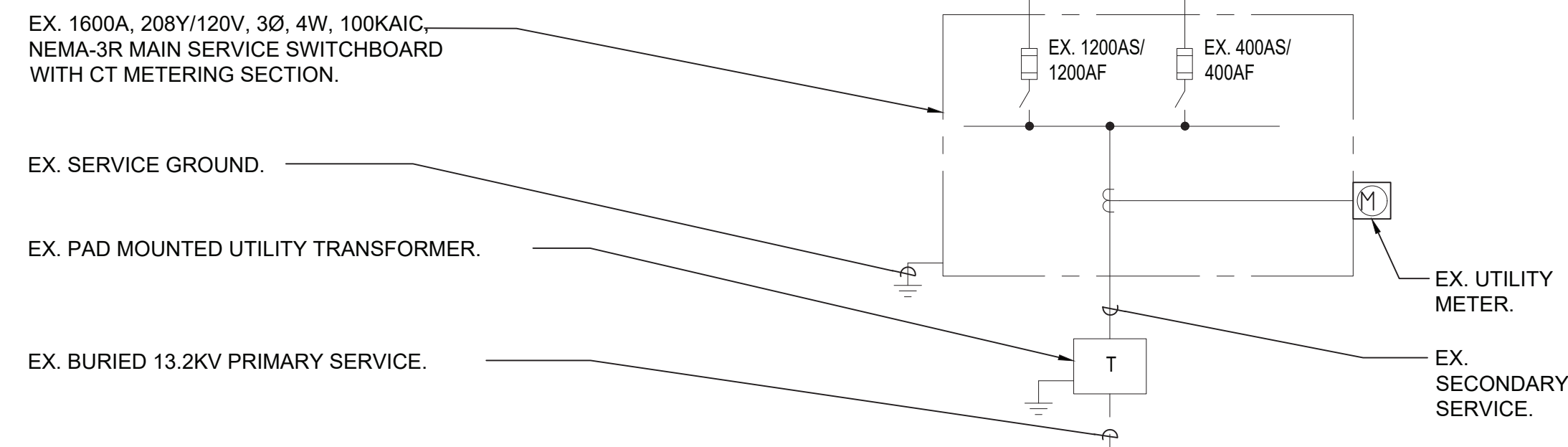
KG+D listen
imagine
build

KG+D . ARCHITECTS PC
285 MAIN STREET MOUNT KISCO, NEW YORK 10549
P:914.666.5900 KGDARCHITECTS.COM



NOTES:

1.) ALL CIRCUIT BREAKERS AND SWITCHES ARE 3 POLE, U.O.N



2	04/22/2022	BID ADDENDUM #2
1	03/31/2022	ISSUED FOR BID
No.	Date	Issue
Sheet Title		
ELECTRICAL ONE-LINE DIAGRAM		
Job No. NKGDD0239.00		Date 09/10/2021
Scale AS NOTED		Drawn / Checked VB / ML
Sheet Number		

E501

PP GAR PANEL SCHEDULE									
MAIN RATING: <u>225A</u>			MAIN C.B.: <u>225A</u>		KAIC RATING: <u>22KAIC</u>				
VOLTAGE: <u>208Y/120V</u>			PHASE: <u>3</u>		WIRE: <u>4</u>		MOUNTING: <u>SURFACE</u>		
CIRC. NO.	LOAD DESCRIPTION	BKR. AMPS	NO. OF POLES	NO. OF POLES	BKR. AMPS	LOAD DESCRIPTION	CIRC. NO.		
1	ACCU1	80	3	3	20	DOAS2	2		
3							4		
5							6		
7	ACCU4	70	3	1	20	REC - ROOF	8		
9				-	-	-	10		
11				-	-	-	12		
13	-	-	-	-	-	-	14		
15	-	-	-	-	-	-	16		
17	-	-	-	-	-	-	18		
19	-	-	-	-	-	-	20		
21	-	-	-	-	-	-	22		
23	SPARE	20	1	1	20	SPARE	24		
25	SPARE	20	1	1	20	SPARE	26		
27	SPARE	20	1	1	20	SPARE	28		
29	SPARE	20	1	1	20	SPARE	30		
LK - PROVIDE LOCKING TABS ON C.B.; GF - GFI TYPE C.B.; GP - GFP TYPE C.B.; AF - ARC FAULT TYPE C.B.; ST - SHUNT TRIP C.B.									
NOTES:									

ADD/ALT #2:
PANELBOARD, ASSOCIATED
FEEDERS AND BRANCH
CIRCUITRY INDICATED SHALL
BE PRICED AS ADD/ALTERNATE.

EX. 'LP1B' PANEL SCHEDULE									
MAIN RATING: 100A			MAIN C.B.: 100A						
VOLTAGE: 208Y/120V			PHASE: 3		WIRE: 4		MOUNTING: RECESSED		
CIRC. NO.	LOAD DESCRIPTION	BKR. AMPS	NO. OF POLES	NO. OF POLES	BKR. AMPS	LOAD DESCRIPTION	CIRC. NO.		
1	EX. LOAD	20	1	1	20	EX. LOAD	2		
3	EX. LOAD	20	1	1	20	EX. LOAD	4		
5	EX. LOAD	20	1	1	20	EX. LOAD	6		
7	EX. LOAD	20	1	1	20	EX. LOAD	8		
9	EX. LOAD	20	1	1	20	EX. LOAD	10		
11	EX. LOAD	20	1	1	20	EX. LOAD	12		
13	EX. LOAD	20	1	1	20	EX. LOAD	14		
15	EX. LOAD	20	1	1	20	EX. LOAD	16		
17	EX. LOAD	20	1	1	20	EX. LOAD	18		
19	EX. LOAD	20	1	1	20	EX. LOAD	20		
21	EX. LOAD	20	1	1	20	EX. LOAD	22		
23	EX. LOAD	20	1	1	20	EX. LOAD	24		
25	REC - CAFETERIA	20*	1	1	20*	REC - CAFETERIA CASH REGISTER	26		
27	REC - CAFETERIA MONITORS	20*	1	1	20*	REC - CAFETERIA MONITORS	28		
29	REC - CAFETERIA	20*	1	1	20*	REC - CAFETERIA	30		
31	LTG - CAFETERIA	20*	1	1	20*	LTG - CAFETERIA	32		
33	LTG - CAFETERIA	20*	1	1	20*	REC - TV MONITOR	34		
35	CFSD	20#	1	1	20#	CFSD	36		
37	BREAKOUT V-101	20#	1	1	20#	REC - CAF TV	38		
39	SPARE	20	1	1	20#	REC - CAF	40		
41	SPARE	20	1	1	20	SPARE	42		
LK - PROVIDE LOCKING TABS ON C.B.; GF - GFI TYPE C.B.									
NOTES:									
1. * - CONTRACTOR SHALL PROVIDE 1P-20A CB.									
2. # - CONTRACTOR SHALL REUTILIZE 1P-20A CB FOR LOAD INDICATED ON DRAWINGS.									

EX. LPSP1 PANEL SCHEDULE									
MAIN RATING: 125A			MAIN C.B.: 100A						
VOLTAGE: 208Y/120V			PHASE: 3		WIRE: 4		MOUNTING: RECESSED		
CIRC. NO.	LOAD DESCRIPTION	BKR. AMPS	NO. OF POLES	NO. OF POLES	BKR. AMPS	LOAD DESCRIPTION	CIRC. NO.		
1	EX. REC - SECURITY 109C	20	1	2	15	EX. ACC-1	2		
3	EX. LTG - SECURITY 109C	20	1				4		
5	EX. DOOR RELEASE VESTIBULE V-1	20	1				6		
7	EX. MOTORIZED DAMPER	15	1	1	20	EX. REC - BATHROOM 109D	8		
9	EX. JBOX - TEACHER'S ROOM	20	1	1	20	EX. REC - TEACHER'S ROOM	10		
11	EX. REC - TEACHER'S ROOM	20	1	2	15*	AC 2-1 & AC 2-2 - 1ST FLR	12		
13	AC 1-1 & AC 1-2 - 1ST FLR	15*	2	1	20#	HVAC CONTROLS	14		
15	AC 1-3 & AC 1-4 - 1ST FLR	15*	2				16		
17							1	20#	18
19				1	20#	20			
21	-	-	-	1	20#	CFSDS	22		
23	EX. SPARE	20	1	1	20	EX. SPARE	24		
25	EX. SPARE	20	1	1	20	EX. SPARE	26		
27	EX. SPARE	20	1	1	20	EX. SPARE	28		
29	EX. SPARE	20	1	1	20	EX. SPARE	30		
LK - PROVIDE LOCKING TABS ON C.B.; GF - GFI TYPE C.B.; AF - ARC FAULT TYPE C.B.; ST - SHUNT TRIP C.B.									
NOTES:									
1. * - CONTRACTOR SHALL PROVIDE 2P-15A CB.									
2. # - CONTRACTOR SHALL PROVIDE 1P-20A CB.									
3. CONTRACTOR SHALL EXTEND BRANCH CIRCUITRY TO NEW PANELBOARD LOCATION, UON.									

PPLIB PANEL SCHEDULE									
MAIN RATING: 225A			MAIN C.B.: 200A		KAIC RATING: 22KAIC				
VOLTAGE: 208Y/120V			PHASE: 3		WIRE: 4		MOUNTING: RECESSED		
CIRC. NO.	LOAD DESCRIPTION	BKR. AMPS	NO. OF POLES	NO. OF POLES	BKR. AMPS	LOAD DESCRIPTION	CIRC. NO.		
1	REC - RM 263A	20	1	1	20	REC - RM 263	2		
3	REC - DATA CLOSET 263C	20	1	1	20	REC - RM 263	4		
5	REC - DATA CLOSET 263C	20	1	1	20	REC - RM 263	6		
7	REC - RM 263	20	1	1	20	REC - RM SV-2/SV-3	8		
9	REC - RM 263	20	1	1	20	REC - RM SV-4/SV-5	10		
11	REC - RM 263	20	1	1	20	REC - STUDY AREA 263D	12		
13	LTG - SV-2/3/4/5	20	1	1	20	REC - STUDY AREA 263D	14		
15	LTG - RM 263/263D	20	1	1	20	REC - PROJECTOR	16		
17	LTG - RM 263	20	1	1	20	LTG - RM 263A	18		
19	LTG - RM 263	20	1	1	20	REC - PROJECTOR	20		
21	REC - DATA ROOM	20	1	1	20	REC - ROOF	22		
23	CFSD	20	1	1	20	REC - DATA CLOSER 263E	24		
25	CFSD	20	1	1	20	REC - BREAKROOM 1 & 2	26		
27	BREAKROOM MOTORIZED SHADES	20	1	1	20	REC - BREAKROOM 3 & 4	28		
29	BREAKROOM MOTORIZED SHADES	20	1	1	20	REC - BREAKROOM 1 & 2	30		
31	-	-	-	1	20	REC - BREAKROOM 3 & 4	32		
33	-	-	-	-	-	-	34		
35	SPARE	20	1	1	20	SPARE	36		
37	SPARE	20	1	1	20	SPARE	38		
39	SPARE	20	1	1	20	SPARE	40		
41	SPARE	20	1	1	20	SPARE	42		
LK - PROVIDE LOCKING TABS ON C.B.; GF - GFI TYPE C.B.; GP - GFP TYPE C.B.; AF - ARC FAULT TYPE C.B.; ST - SHUNT TRIP C.B.									
NOTES:									

PP3 PANEL SCHEDULE									
MAIN RATING: 225A			MAIN C.B.: 150A		KAIC RATING: 22KAIC				
VOLTAGE: 208Y/120V			PHASE: 3		WIRE: 4		MOUNTING: SURFACE		
CIRC. NO.	LOAD DESCRIPTION	BKR. AMPS	NO. OF POLES	NO. OF POLES	BKR. AMPS	LOAD DESCRIPTION	CIRC. NO.		
1	2ND FLR - AC 3-1/AC 3-2/AC 3-3/	15	2	2	15	3RD FLR - AC 1-8/AC 1-9/AC 1-10/	2		
3	AC 3-4					AC 1-11	4		
5	2ND FLR - AC 3-5/AC 3-6/AC 3-7/	15	2	2	15	3RD FLR - AC 2-8/AC 2-9/AC 2-10/	6		
7	AC 3-8					AC 2-11	8		
9	2ND FLR - AC 1-5/AC 1-6/ AC 1-7	15	2	2	15	3RD FLR - AC 3-9/AC 3-10/ AC 3-11	10		
11	AC 2-3						12		
13	2ND FLR - AC 2-4/AC 2-5/AC 2-6	15	2	2	15	3RD FLR - AC 3-12/AC 3-13/AC 3-14	14		
15	AC 2-7					AC 3-15	16		
17	HVAC CONTROLS	20	1	1	20	REC - ROOF	18		
19	HVAC CONTROLS	20	1	1	20	2ND FLR - CFSD	20		
21	HVAC CONTROLS	20	1	1	20	2ND FLR - CFSD	22		
23	HVAC CONTROLS	20	1	1	20	3RD FLR - CFSD	24		
25	HVAC CONTROLS	20	1	1	20	3RD FLR - CFSD	26		
27				2	25#	EX. LOAD	28		
29	EX. LOAD	30@	3				30		
31				1	20*	EX. LOAD	32		
33	EX. LOAD	25#	2	2	20#	EX. LOAD	34		
35							36		
37	EX. LOAD	20*	1	2	15#	EX. LOAD	38		
39	EX. LOAD	20*	1				40		
41	EX. LOAD	20*	1	1	15*	EX. LOAD	42		
43	EX. LOAD	15*	1	1	15*	EX. LOAD	44		
45	EX. LOAD	15*	1	1	15*	EX. LOAD	46		
47	EX. LOAD	15*	1	1	15*	EX. LOAD	48		
49	EX. LOAD	15*	1	-	-	-	50		
51	-	-	-	-	-	-	52		
53	SPARE	20	1	1	20	SPARE	54		
55	SPARE	20	1	1	20	SPARE	56		
57	SPARE	20	1	1	20	SPARE	58		
59	SPARE	20	1	1	20	SPARE	60		
LK - PROVIDE LOCKING TABS ON C.B.; GF - GFI TYPE C.B.									