

GENERAL NOTES

1. PROVIDE LABOR, MATERIALS, TOOLS, MACHINERY, EQUIPMENT, AND SERVICES NECESSARY TO COMPLETE THE WORK UNDER THIS CONTRACT. ALL SYSTEMS AND EQUIPMENT SHALL BE COMPLETE IN EVERY ASPECT AND ALL ITEMS OF MATERIAL, EQUIPMENT AND LABOR SHALL BE PROVIDED FOR A FULLY OPERATIONAL SYSTEM AND READY FOR USE. COORDINATE THE WORK WITH THE WORK OF THE OTHER TRADES IN ORDER TO RESOLVE ALL CONFLICTS WITHOUT IMPEDING THE JOB PROGRESS.
2. EXAMINE THE DRAWINGS AND OTHER DIVISIONS, AND SECTIONS OF THE SPECIFICATIONS IN ORDER TO DETERMINE THE EXTENT OF THE WORK REQUIRED TO BE COMPLETED UNDER THIS DIVISION. FAILURE TO EXAMINE ALL THE CONTRACT DOCUMENTS FOR THIS PROJECT WILL NOT RELIEVE THIS SECTION AND ANY OTHER SECTIONS OF THEIR RESPONSIBILITIES TO PERFORM THE WORK REQUIRED FOR A COMPLETE FULLY OPERATIONAL AND SATISFACTORY INSTALLATION.
3. THE WORK INCLUDES BUT IS NOT LIMITED TO THE FOLLOWING SYSTEMS, EQUIPMENT AND SERVICES, AS SPECIFIED HEREBY.
4. START-UP SERVICES SHALL BE INCLUDED IN THE BID.
5. ALL SYSTEMS, EQUIPMENT AND SERVICES SPECIFIED HEREIN SHALL BE PROVIDED COMPLETE AND READY FOR USE. ALL EQUIPMENT, PIPING, ARE NEW, FURNISHED AND INSTALLED BY THIS CONTRACTOR, UNLESS OTHERWISE NOTED.
6. INSTALL ACCESS FOR SERVICING AND MAINTENANCE. COORDINATE THE FINAL LOCATION OF CONCEALED EQUIPMENT AND DEVICES REQUIRING ACCESS WITH FINAL LOCATION OF ACCESS PANELS AND DOORS. ALLOW AMPLE SPACE FOR REMOVAL OF ALL PARTS THAT REQUIRE REPLACEMENT OR SERVICING.
7. VERIFY FINAL LOCATIONS FOR ROUGH WORK WITH FIELD MEASUREMENTS AND WITH THE REQUIREMENTS OF THE ACTUAL EQUIPMENT BEING CONNECTED.
8. PIPING ARE SHOWN DIAGRAMMATICALLY AND DOES NOT SHOW ALL OFFSETS, DROPS AND RISES OF RUNS. THE CONTRACTOR SHALL ALLOW IN HIS PRICE FOR ROUTING OF PIPING TO AVOID OBSTRUCTIONS. EXACT LOCATIONS ARE SUBJECT TO APPROVAL OF ARCHITECT. COORDINATION WITH THE EXISTING SERVICES, INCLUDING THOSE OF OTHER TRADES IS REQUIRED.

ABBREVIATIONS

- A.F.F.

A.H.J.

CL OR C

CLG.

COL.

CONN.

CONT.

DIA., Ø

DN.

DWG.

ELEV.

F.F./FIN. FLR.

FLR.

G.P.M.

G.P.H.

MAX.

MIN.

NC

N.I.C.

PRESS.

P.S.I.

S.F./SQ. FT.

STD.

TYP.

D

HP

OD

TYP.

V.I.F.

OC
- ABOVE FINISHED FLOOR

AUTHORITY HAVING JURISDICTION

CENTER LINE

CEILING

COLUMN

CONNECTION

CONTINUED

DIAMETER

DOWN

DRAWING

ELEVATION

FINISHED FLOOR

FLOOR

GALLONS PER MINUTE

GALLONS PER HOUR

MAXIMUM

MINIMUM

NORMALLY CLOSED

NOT IN CONTRACT

PRESSURE

POUNDS PER SQUARE INCH

SQUARE FEET

STANDARD

TYPICAL

DRAIN PIPE

HORSE POWER

OUTSIDE DIAMETER

TYPICAL

VERIFY IN FIELD

ON CENTER

LEGEND

- EXISTING TO BE REMOVED

EXISTING ABOVE GROUND PIPING

NEW ABOVE GROUND PIPING

GATE VALVE

CHECK VALVE

BALL VALVE

FLOW SENSOR/SWITCH

CONNECT TO EXISTING

PIPE DROPPING DOWN

PIPE RISING UP

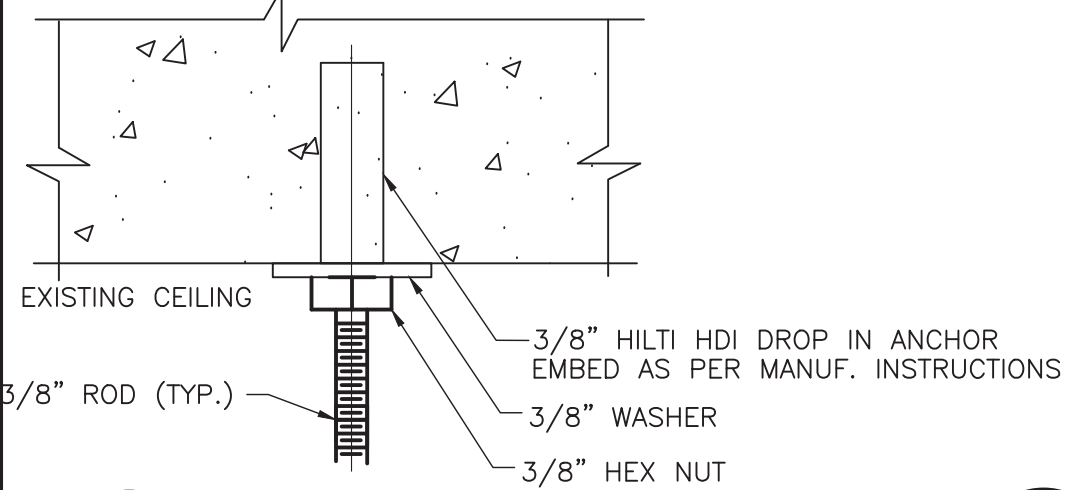
PIPE BOTTOM CONNECTION

PIPE TOP CONNECTION

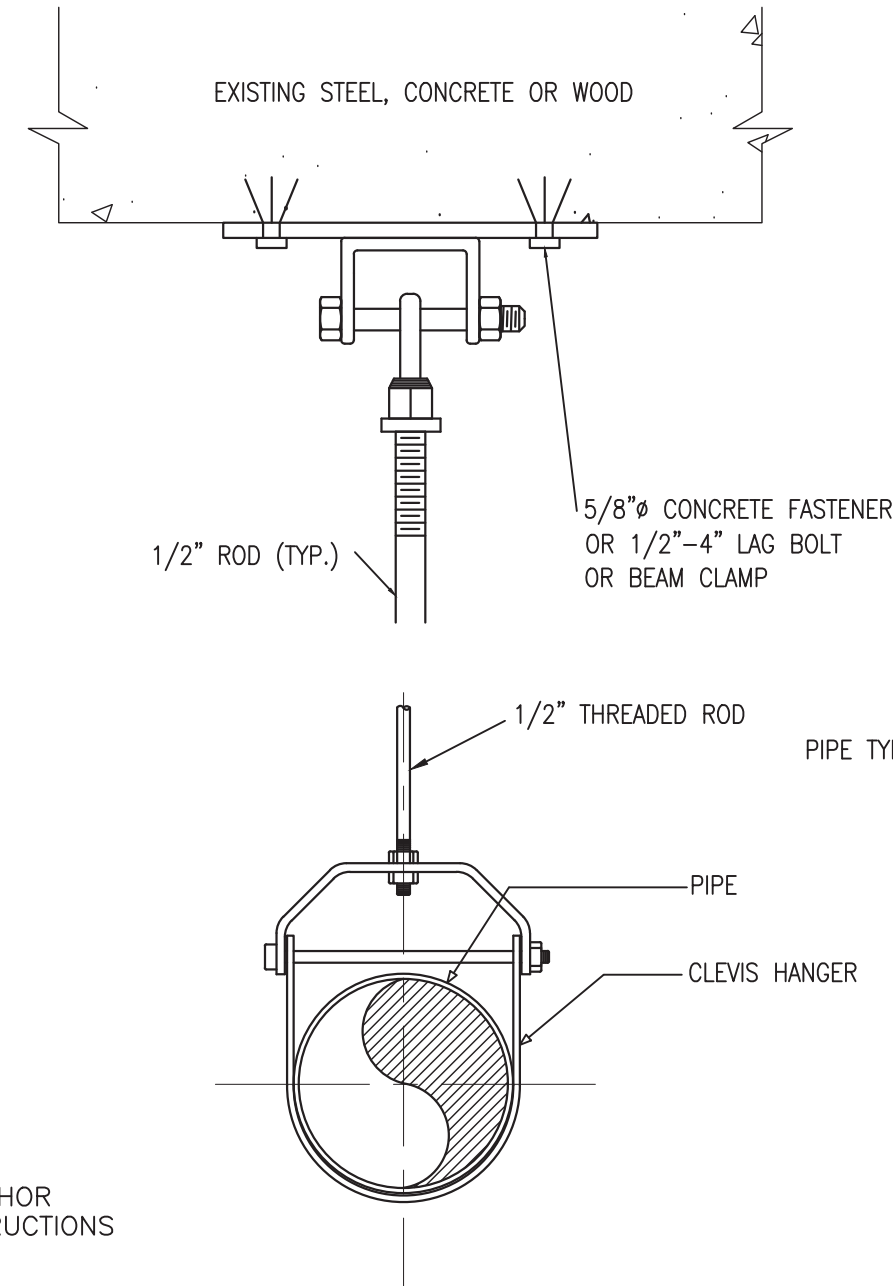
PUMP

DETAIL 3, DRAWING M-5

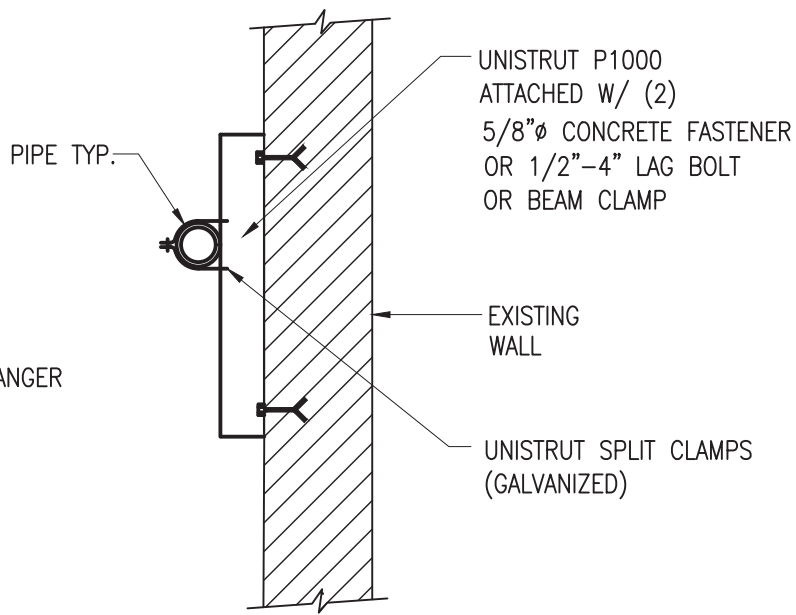
9. ARRANGE FOR CHASES, SLOTS, AND OPENINGS IN OTHER AND ALL COMPONENTS TO ALLOW FOR INSTALLATIONS.
10. COORDINATE THE INSTALLATION OF REQUIRED SUPPORTING DEVICES AND SIZE OF SLEEVES TO BE SET IN POURED CONCRETE AND OTHER STRUCTURAL COMPONENTS AS THEY ARE CONSTRUCTED.
11. COORDINATE THE INSTALLATION OF MATERIALS AND EQUIPMENT ABOVE GRADE WITH MECHANICAL AND SUPPRESSION SYSTEM, LIGHT FIXTURES, AND ALL OTHER INSTALLATIONS AND ACCESSORIES.
12. PROVIDE EQUIPMENT AND SYSTEMS THAT, AS DEFINED HEREIN, SHALL BE QUIET AND FREE OF APPARENT VIBRATION IN OPERATIONS.
13. OBTAIN EQUIPMENT THAT IS QUIET IN OPERATION AS COMPARED TO OTHER AVAILABLE EQUIPMENT OF ITS SIZE, CAPACITY, AND TYPE; INSTALL EQUIPMENT SO THAT A MINIMUM AMOUNT OF NOISE AND/OR VIBRATION IS TRANSMITTED TO THE BUILDING; AND FABRICATE THE DUCT SYSTEM SO THAT AIR NOISES GENERATED IN THE SYSTEM ARE HELD TO AN ABSOLUTE MINIMUM.
14. PROVIDE A COMPLETE SYSTEM OF VIBRATION ISOLATION FOR EACH ITEM OF HVAC EQUIPMENT AND APPARATUS AS SPECIFIED HEREIN, AS SHOWN ON THE DRAWINGS AND AS NEEDED FOR A COMPLETE AND PROPER INSTALLATION.
15. PROVIDE SEISMIC RESTRAINTS FOR ALL EQUIPMENT FURNISHED AS PART OF THIS CONTRACT. ANCHOR ALL EQUIPMENT FURNISHED BY OTHERS WHEN INSTALLATION IS CLAIMED BY THIS CONTRACT. DUCTWORK SHALL HAVE SUPPORTS, HANGERS, VIBRATION ISOLATORS, AND SHALL BE SEISMICALLY RESTRAINED IN ACCORDANCE WITH NYSBC.
16. INSTALL WORK SO AS TO BE READILY ACCESSIBLE FOR OPERATION, MAINTENANCE AND REPAIR. MINOR DEVIATIONS FROM DRAWINGS MAY BE MADE TO ACCOMPLISH THIS, BUT CHANGES INVOLVING EXTRA COST SHALL NOT BE MADE WITHOUT APPROVAL.
18. THE CONTRACTOR SHALL KEEP ALL EQUIPMENT AND MATERIALS, AND ALL PARTS OF THE BUILDING, EXTERIOR SPACE AND ADJACENT STREETS, SIDEWALKS AND PAVEMENTS, FREE FROM MATERIAL AND DEBRIS RESULTING FROM THE EXECUTION OF THIS WORK. EXCESS MATERIALS WILL NOT BE PERMITTED TO ACCUMULATE EITHER IN THE INTERIOR OR THE EXTERIOR.
19. SEAL OPENINGS AROUND PIPING THROUGH PARTITIONS, AND WALLS WITH MINERAL WOOL OR OTHER NONCOMBUSTIBLE MATERIAL.
20. ALL PRESENT MATERIAL, EQUIPMENT AND CONSTRUCTION DEBRIS TO BE REMOVED UNDER THIS CONTRACT SHALL BECOME THE PROPERTY OF THE CONTRACTOR WITH THE EXCEPTION OF SPECIFIC EQUIPMENT AND APPARATUS REQUESTED BY THE BUILDING REPRESENTATIVE, ARCHITECT OR AS NOTED TO BE RELOCATED ON THE DRAWINGS SHALL BE PROPERLY DISPOSED OF BY THIS CONTRACTOR.
21. THE FINAL ACCEPTANCE WILL BE MADE AFTER THE CONTRACTOR HAS ADJUSTED HIS EQUIPMENT, BALANCED THE VARIOUS SYSTEMS, DEMONSTRATED THAT IT FULFILLS THE REQUIREMENTS OF THE DRAWINGS AND SPECIFICATIONS AND HAS FURNISHED ALL THE REQUIRED CERTIFICATES OF INSPECTION AND APPROVAL.
22. CONTRACTOR TO COMPLY WITH THE 2010 NYS BUILDING CODE AND ADAPTED APPENDICES.
23. CONTRACTOR TO SUBMIT SHOP DRAWING FOR APPROVAL FOR ALL SYSTEMS
24. PUMP CONTROLS AND SET PINTS TO REMAIN THE SAME, CONNECT TO NEW HIGH AND LOW PRESSURE SENSORS.
25. PRESSURE TEST WATER SUPPLY SYSTEM 1 1/2 TIMES WORKING PRESSURE FOR 2 HR MIN.



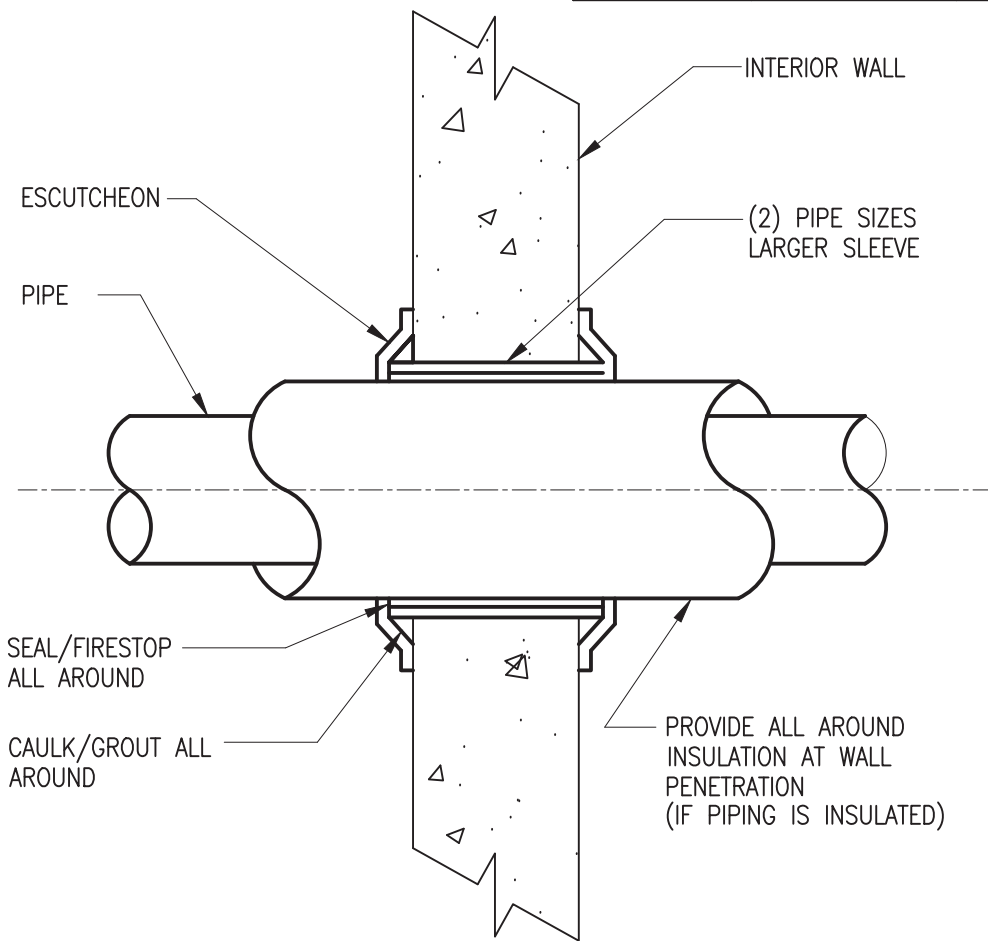
7 HANGER DETAIL
P-101 SCALE: NONE



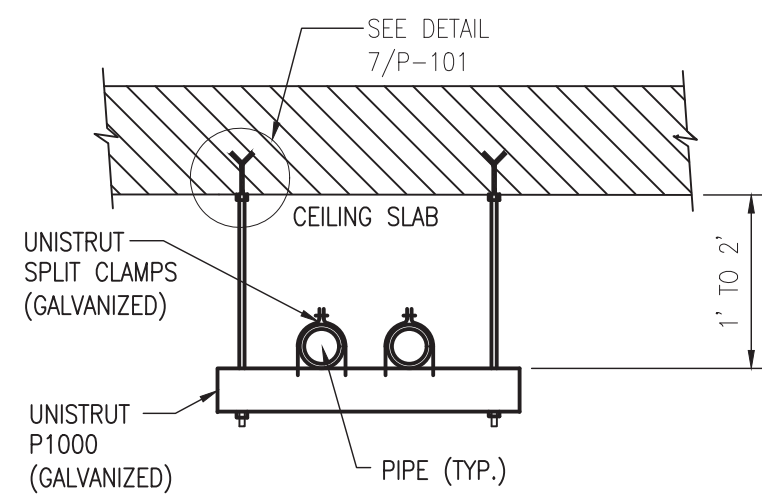
2 CLEVISES HANGER
P-101 SCALE: NONE



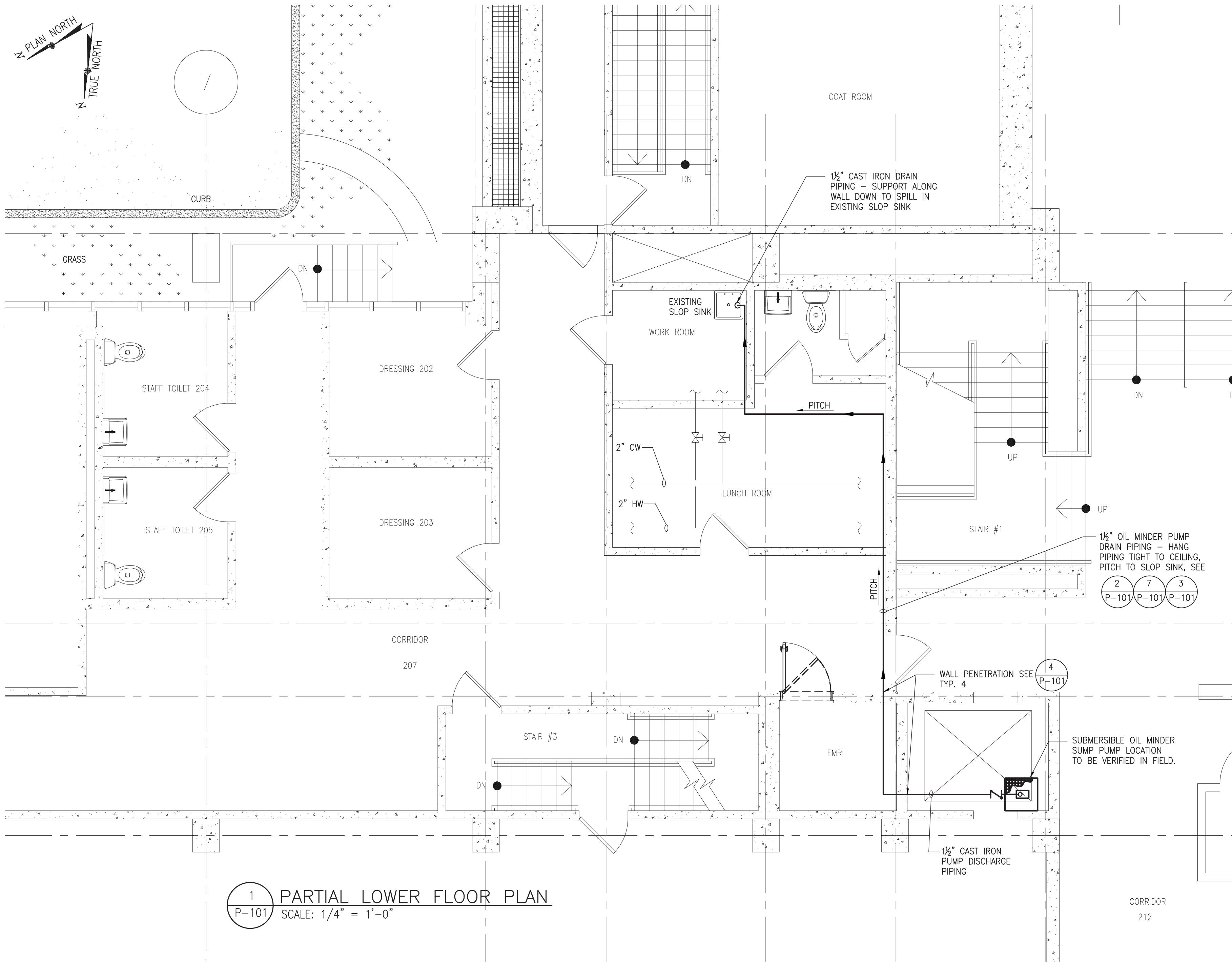
3 WALL SUPPORT
P-101 SCALE: NONE



4 TYPICAL WALL PENETRATION
P-101 SCALE: NONE



5 PIPING-CEILING SUPPORT DETAIL
P-101 SCALE: NONE



1 PARTIAL LOWER FLOOR PLAN
P-101 SCALE: 1/4" = 1'-0"

SUMP PUMP SCHEDULE											
PUMP #	LOCATION	TYPE	SERVICE	GPM	TDH	MOTOR DATA					REMARKS
						RPM	HP	PHASE	CYCLE	VOLTS	
P-1	ACADEMIC-1 ELEVATOR SHAFT PIT	SUBMERSIBLE WATER TIGHT SWITCH & FLOAT	ELEVATOR SHAFT	69 (MAX.)	38	1750	4/10	1	60	115	ZOELLER OIL GUARD MODEL N152 940-0006 SUBMERSIBLE EFFLUENT PUMP 4/10 HP, 115 VOLT 1 1/2" DISCHARGE, 69 GPM MAX.

0	BID SUBMISSION	06/29/2022	JDL
No.	Revision	Date	By
ALL DRAWINGS AND WRITTEN MATERIAL APPEARING HEREIN CONSTITUTE ORIGINAL AND UNPUBLISHED WORK OF THE ENGINEER AND MAY NOT BE DUPLICATED, USED OR DISCLOSED WITHOUT WRITTEN CONSENT OF THE ENGINEER.			

GPI

Engineering
Design
Planning
Construction Management

845.368.4050

GPI.NET.COM

Greenman-Pedersen, Inc.
2 Executive Boulevard, Suite 202
Suffern, NY 10901

Project WILL LIBRARY OF THE YONKERS PUBLIC LIBRARY ELEVATOR REHABILITATION 1500 CENTRAL PARK AVE., YONKERS, NY

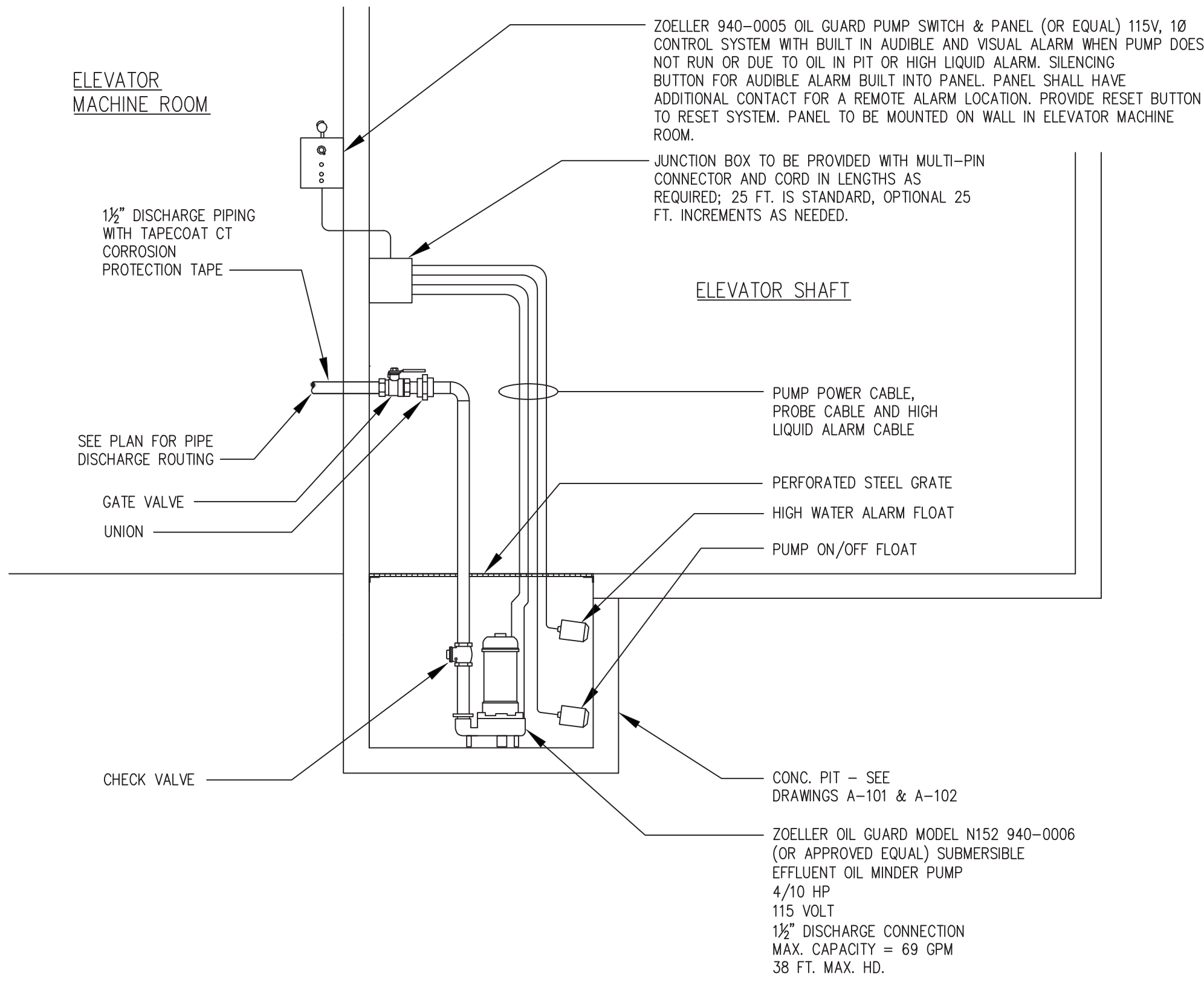
Drawing Title PLUMBING-DRAIN PLAN

Date	Scale	Designed By	Drawn By	Checked By
06/29/2022	AS SHOWN	JM	JM	MP

Seal	Project No.
	MNY-2200036.00

Drawing No.
P-101

Sheet 17 of 20



1
P-102
ELEVATOR OIL MINDER PUMP DETAIL
SCALE: NONE

0	BID SUBMISSION	06/29/2022	JDL
No.	Revision	Date	By

ALL DRAWINGS AND WRITTEN MATERIAL APPEARING HEREIN CONSTITUTE ORIGINAL AND UNPUBLISHED WORK OF THE ENGINEER AND MAY NOT BE DUPLICATED, USED OR DISCLOSED WITHOUT WRITTEN CONSENT OF THE ENGINEER.

GPI

Engineering
Design
Planning
Construction Management

845.368.4050

GPINET.COM

Greenman-Pedersen, Inc.
2 Executive Boulevard, Suite 202
Suffern, NY 10901

Project WILL LIBRARY OF
THE YONKERS PUBLIC LIBRARY
ELEVATOR REHABILITATION
1500 CENTRAL PARK AVE., YONKERS, NY

Drawing Title

PLUMBING DETAILS

Date 06/29/2022	Scale AS SHOWN	Designed By JM	Drawn By JM	Checked By MP
--------------------	-------------------	-------------------	----------------	------------------

Seal

Project No.
MNY-2200036.00

Drawing No.
P-102

Sheet 18 of 20