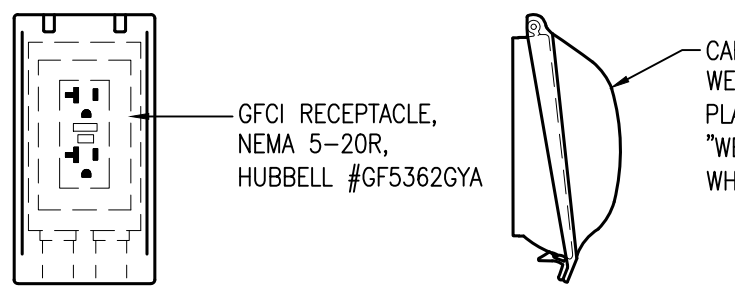


### TYPICAL ROOF PENETRATION DETAIL

SCALE: NONE

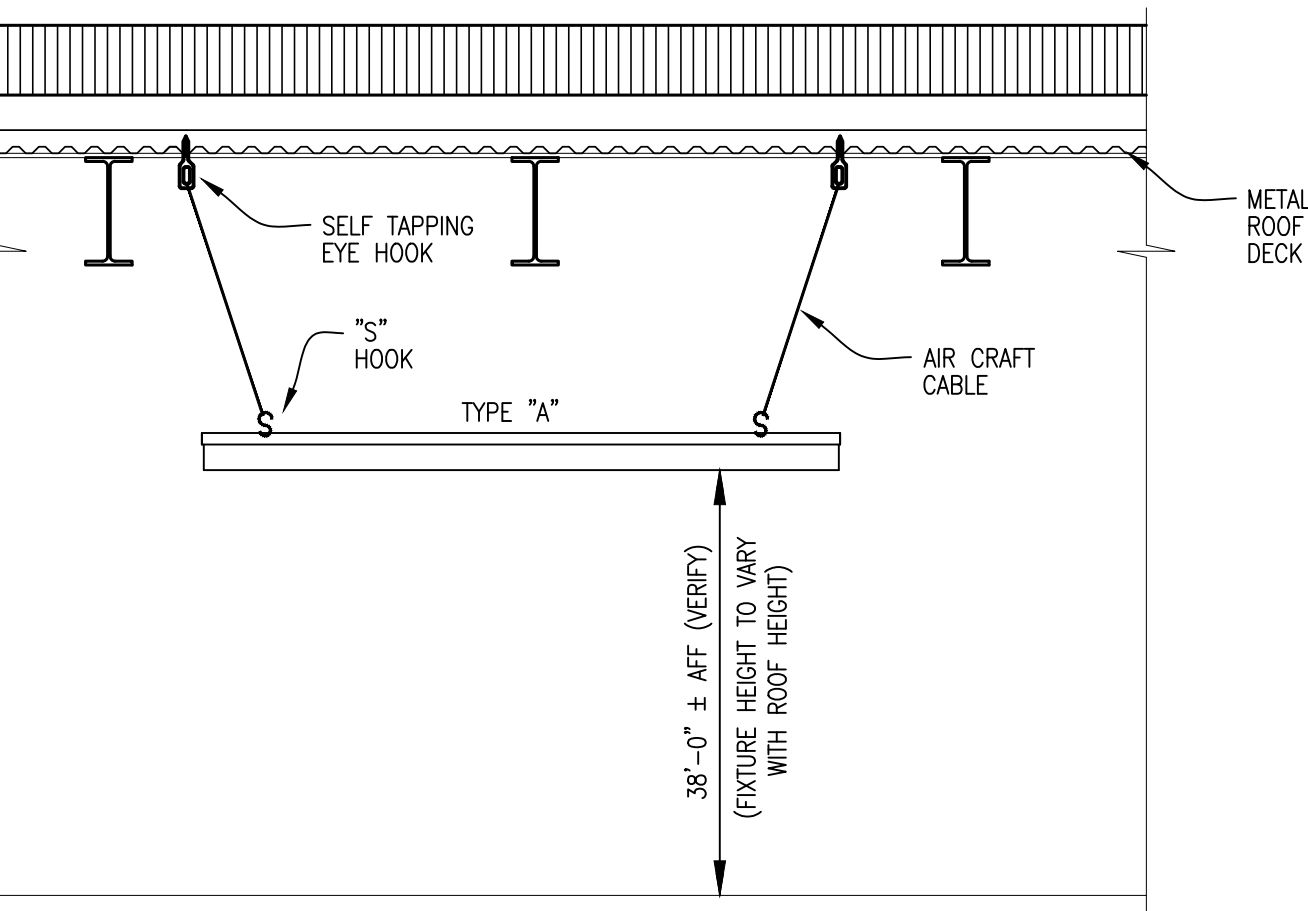
#### NOTES:

1. MAINTAIN A MINIMUM CLEARANCE OF 12" [308mm] ON ALL SIDES OF ROOF PENETRATION FROM WALLS, CURBS, AND OTHER PROJECTIONS TO FACILITATE PROPER FLASHING.
2. FLANGES OF ADJACENT FLASHINGS SHALL NOT BE CUT OR OVERLAPPED.
3. VERIFY ROOF & STRUCTURAL SYSTEM WITH ARCHITECT & STRUCTURAL ENGINEER.
4. COORDINATE FLASHING INSTALLATION WITH ROOFING CONTRACTOR TO ENSURE PROPER METHODS & MATERIALS ARE USED TO MAINTAIN ROOF WARRANTY.



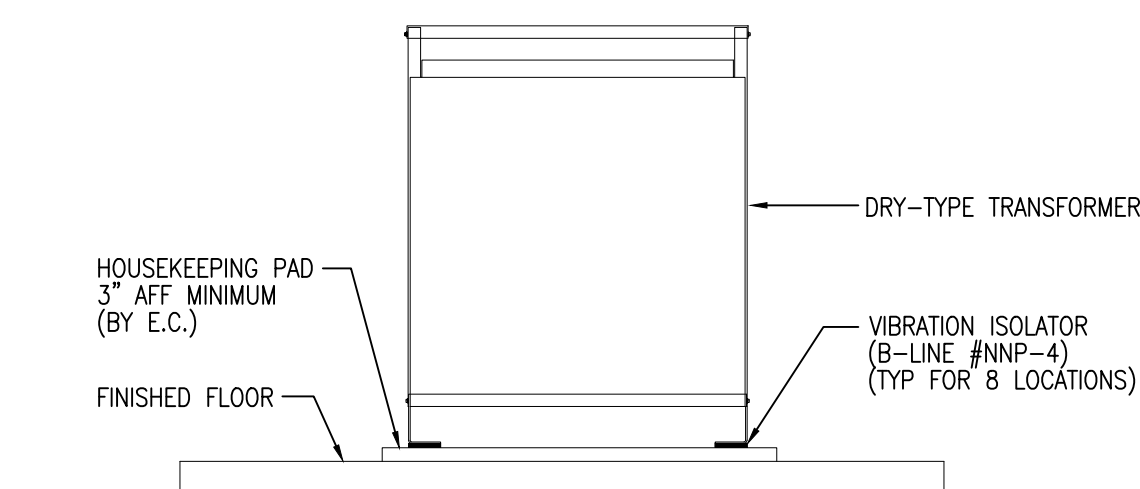
### EXTERIOR RECEPTACLE DETAIL

SCALE: NONE



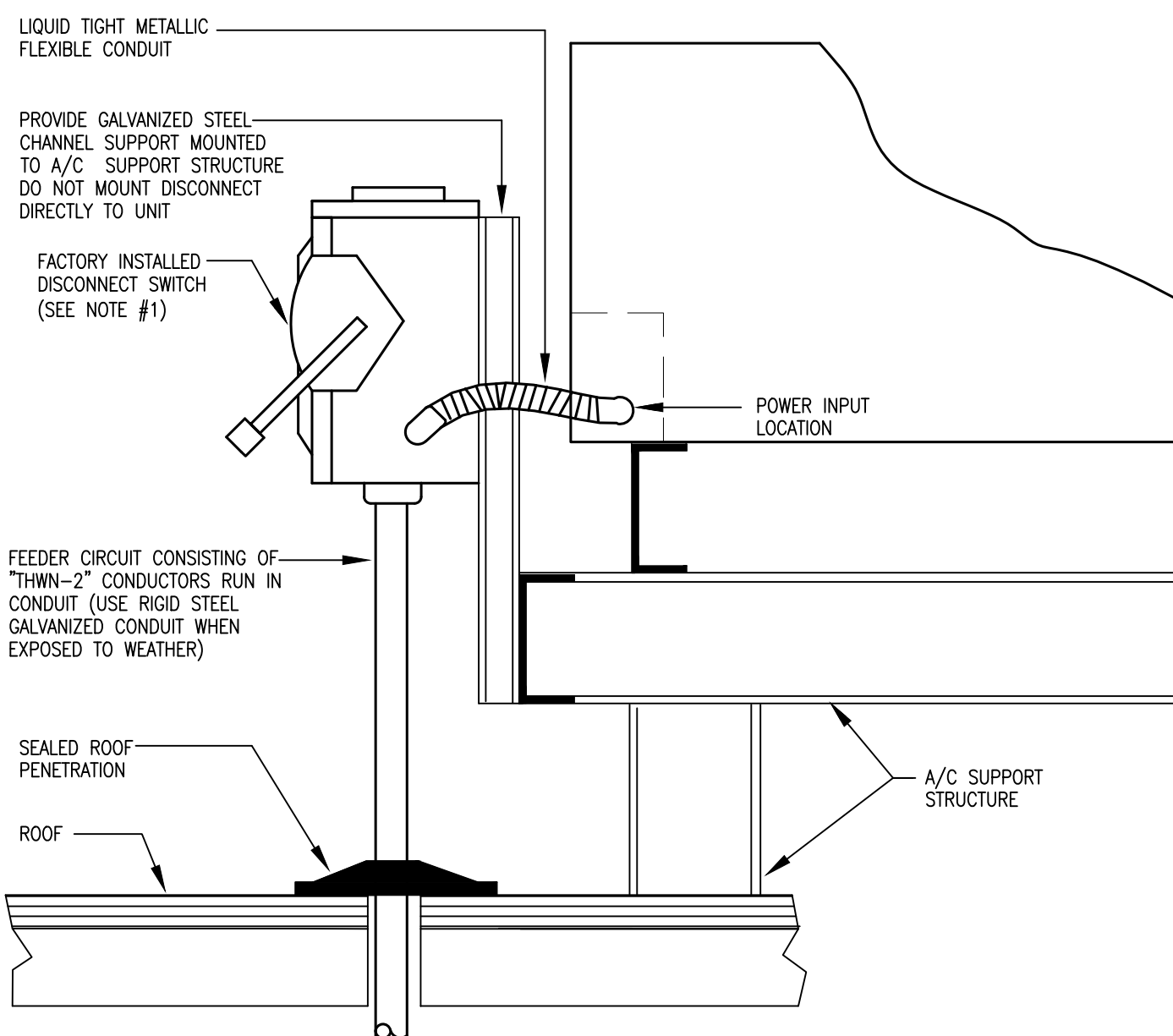
### FIXTURE TYPE "A" MOUNTING DETAIL

SCALE: NONE



### TRANSFORMER FLOOR MOUNTING DETAIL

SCALE: NONE

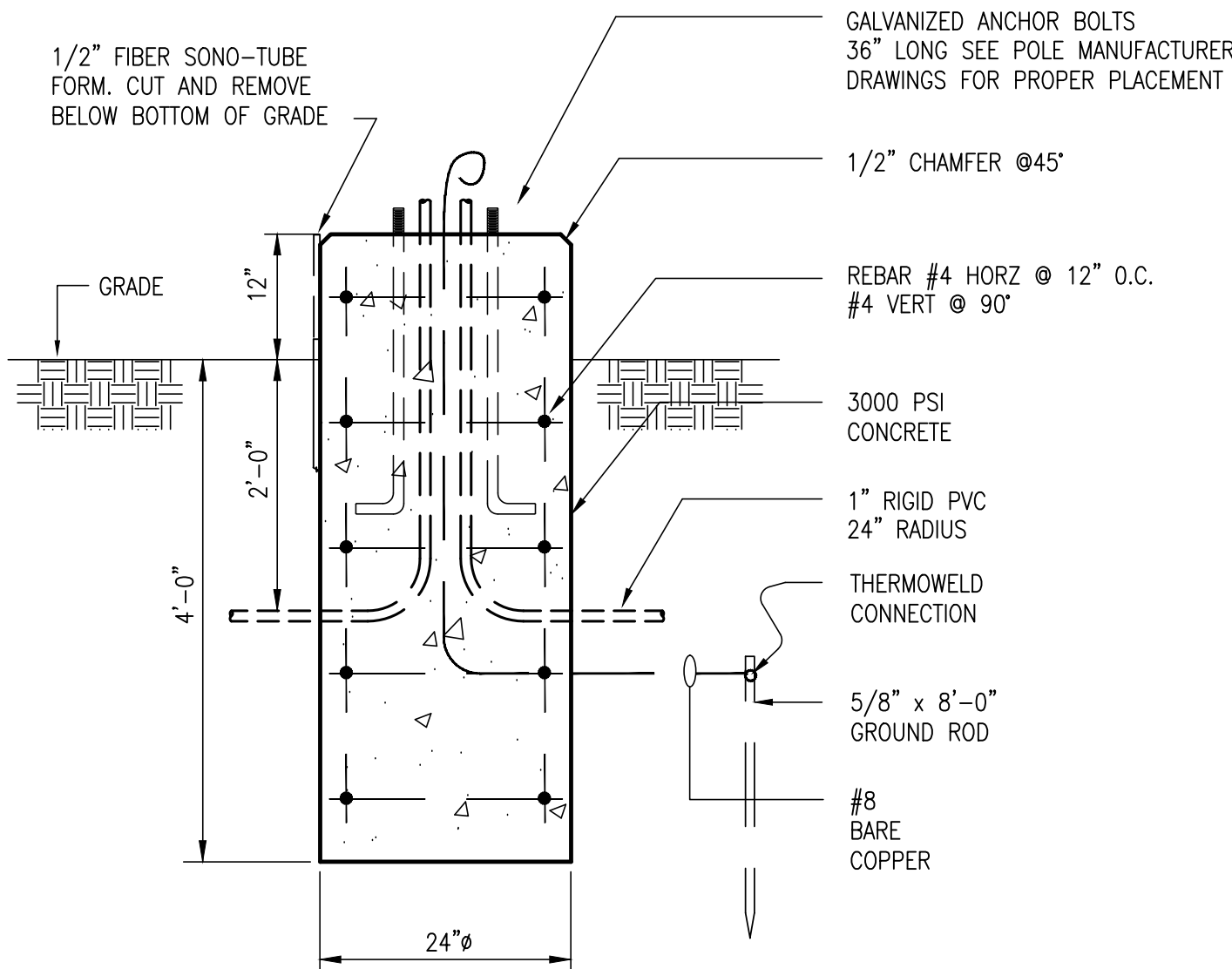


### HVAC EQUIPMENT INSTALLATION ON ROOF

SCALE: NONE

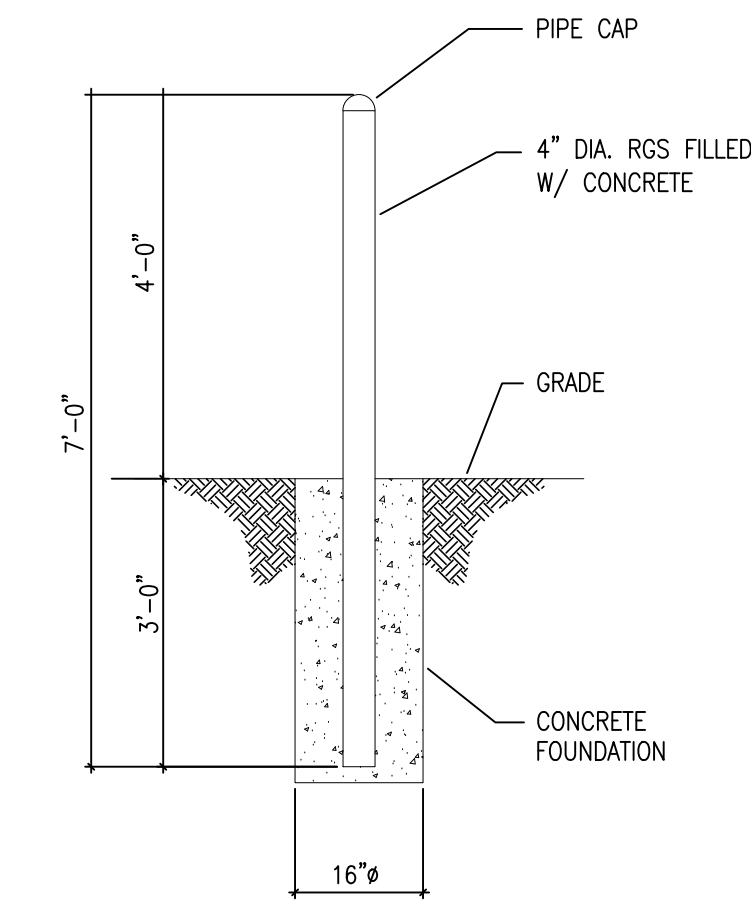
#### NOTES:

1. PROVIDE DISCONNECT SWITCHES FOR ALL HVAC EQUIPMENT UNLESS DISCONNECT IS FACTORY INSTALLED.
2. PROVIDE FUSED DISCONNECT SWITCH IF NAMEPLATE CALLS FOR FUSED OR HACR BREAKER AND HACR BREAKER IS NOT AVAILABLE IN THE REQUIRED AMPERE RATING.
3. VERIFY NAME PLATE ELECTRICAL REQUIREMENTS AND RATINGS ON ALL HVAC EQUIPMENT IN FIELD PRIOR TO INSTALLATION OF ASSOCIATED POWER FEEDERS, OVERCURRENT DEVICES AND SWITCHES.



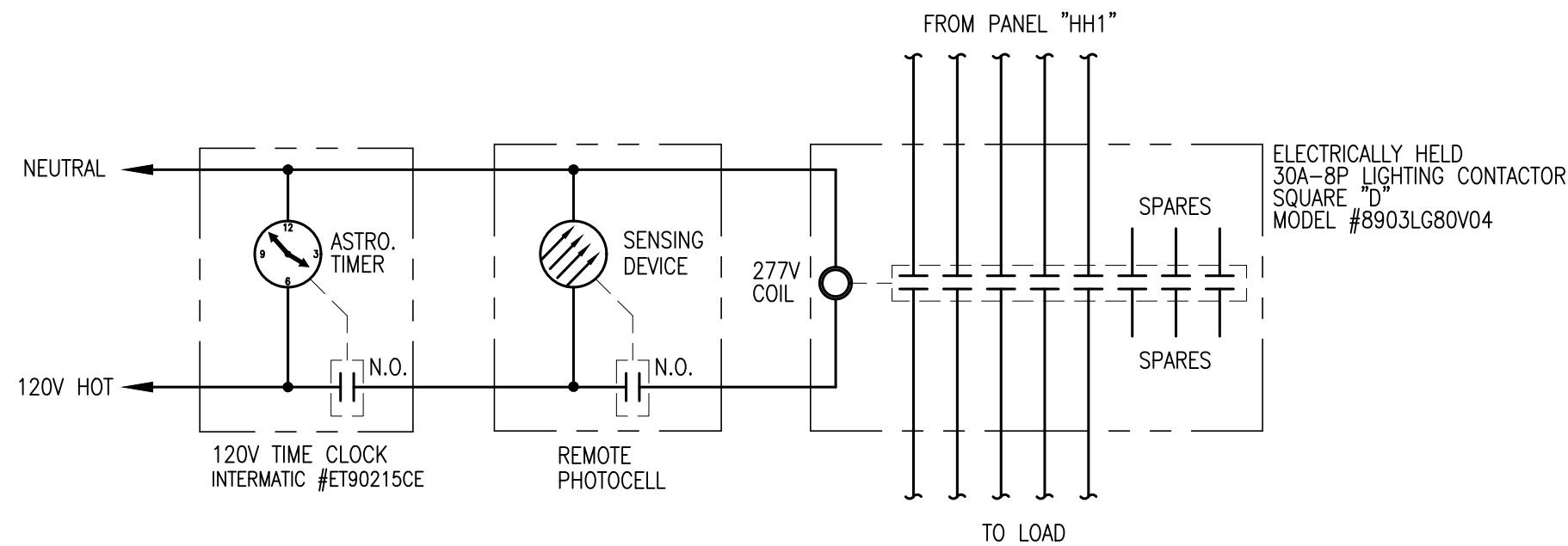
### POLE FOUNDATION DETAIL

SCALE: NONE



### EXTERIOR BOLLARD DETAIL

SCALE: NONE



### WAREHOUSE TIMECLOCK/PHOTOCELL SCHEMATIC DIAGRAM

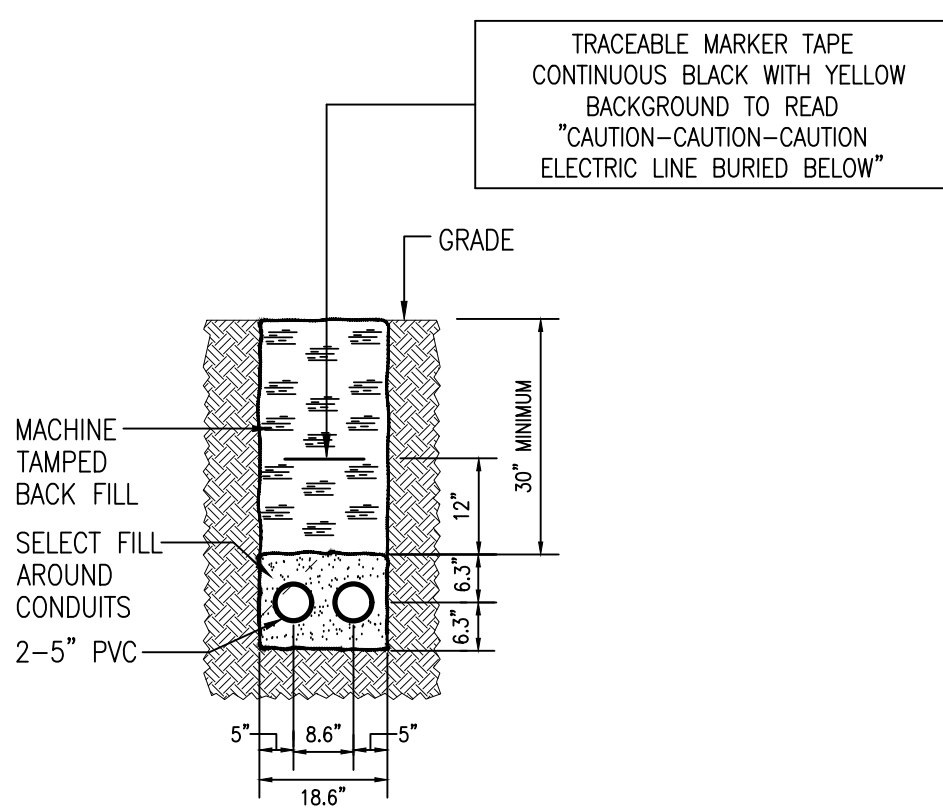
SCALE: NONE

#### NOTES:

1. LOCATE TIMECLOCK & LIGHTING CONTACTOR NEXT TO PANEL "HH1" COORDINATE LOCATION & ORIENTATION OF REMOTE PHOTOCELL DEVICE W/ ARCHITECT.
2. E.G. SHALL COORDINATE TIMECLOCK SETTINGS W/ OWNER AS PART OF A COMPLETE INSTALLATION.

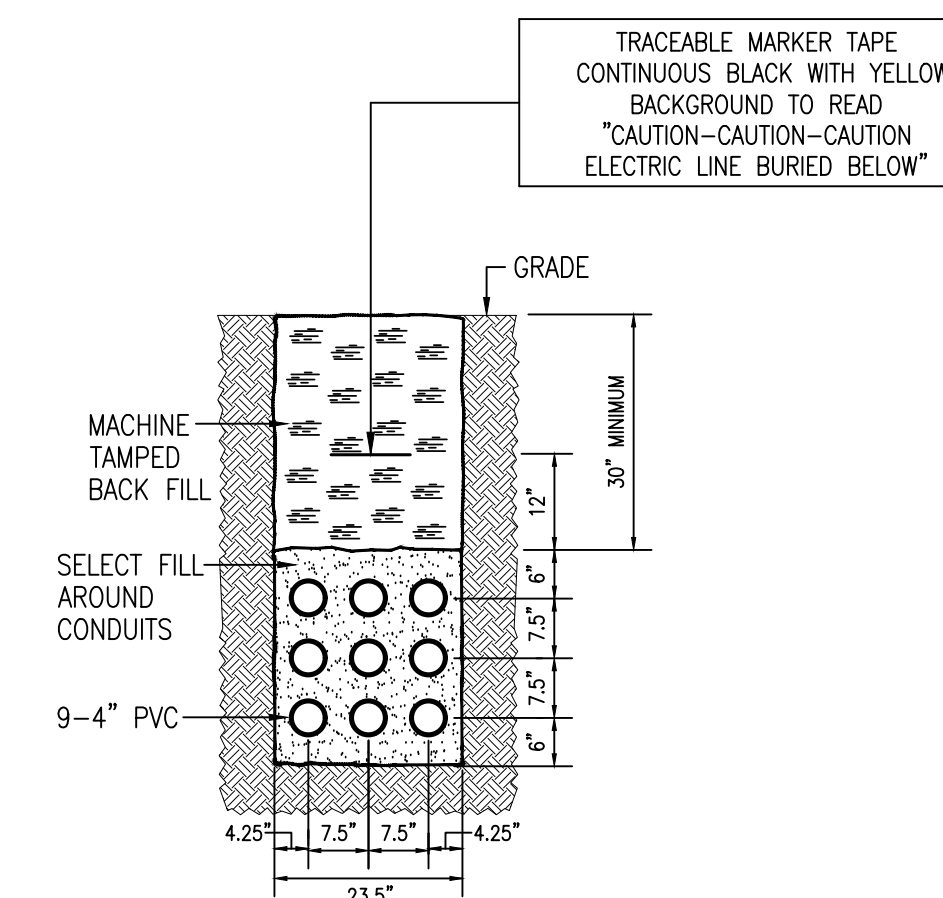
#### OPERATION

1. TIME CLOCK IS SET TO TURN LIGHTS OFF AT A TIME TO BE DETERMINED BY THE END USER. PHOTOCELL MAY STILL BE CLOSED BUT AN OPEN CONTACT IN THE TIMECLOCK KEEPS THE LOAD OFF.
2. TIME CLOCK IS SET TO GO "ON" AT A TIME TO BE DETERMINED BY THE END USER. THE CONTACT IN THE TIMECLOCK WILL CLOSE BUT THE PHOTOCELL CONTACT WILL BE OPEN, KEEPING THE LIGHTS OFF.
3. PHOTOCELL CONTACT WILL CLOSE AT DUSK COMPLETING THE CIRCUIT AND TURNING THE LOAD ON.
4. SEQUENCE BEGINS AGAIN.



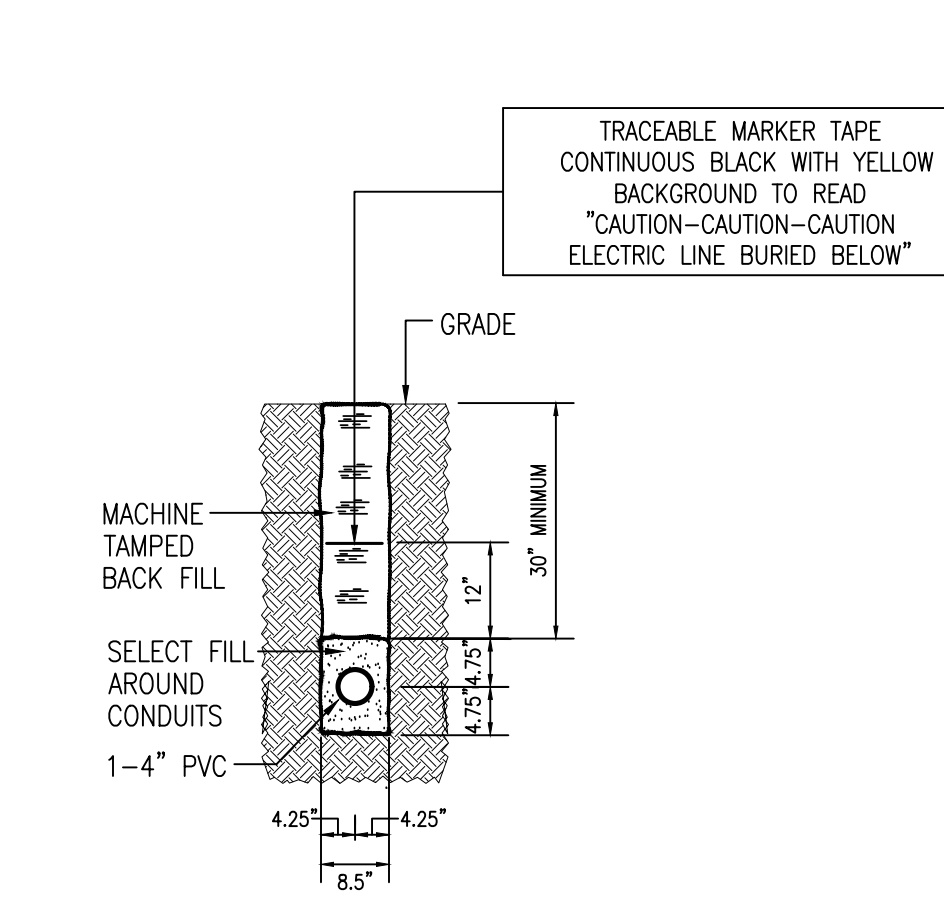
### SECTION "A-A" PRIMARY DUCT BANK DETAIL

SCALE: NONE



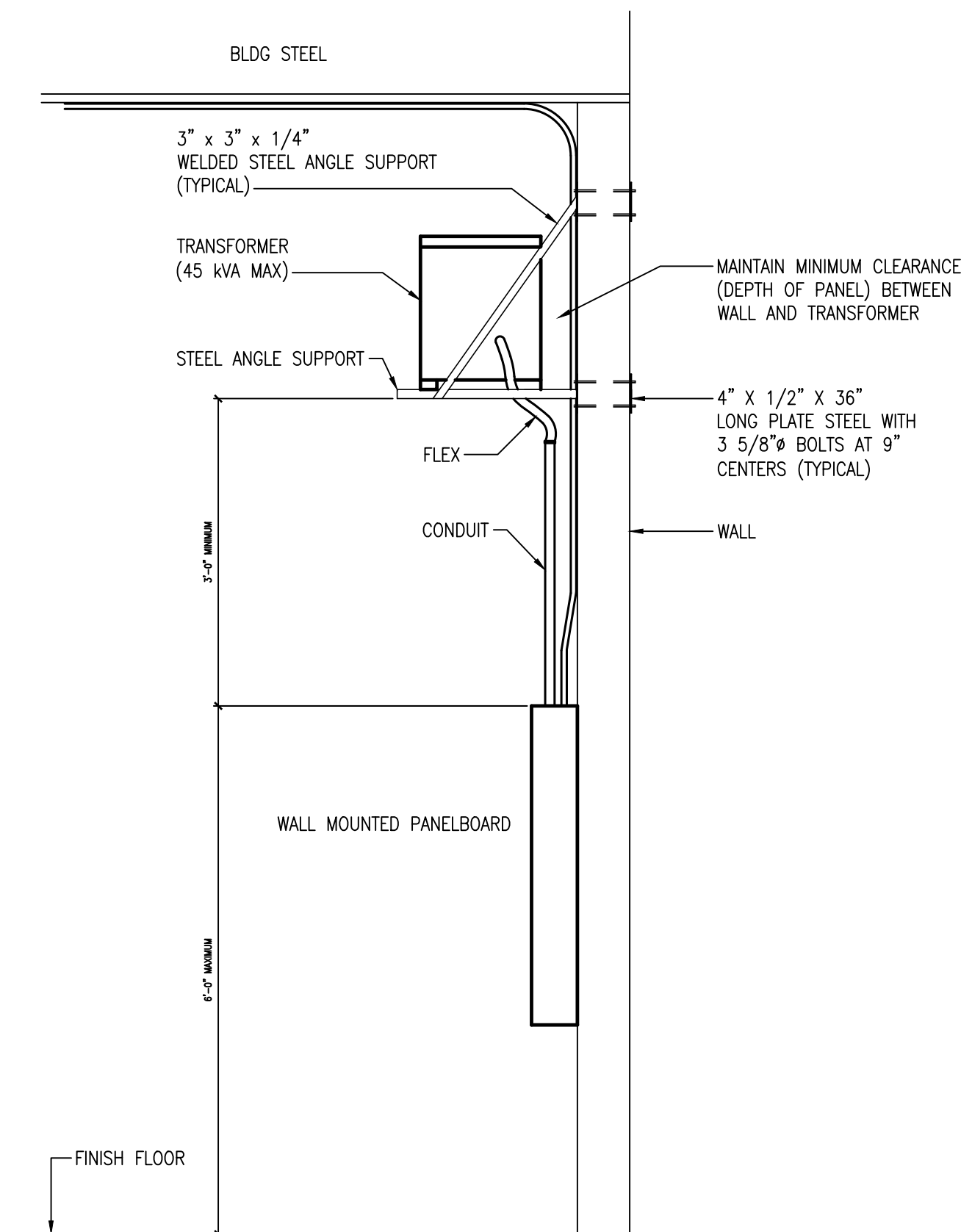
### SECTION "B-B" SECONDARY DUCT BANK DETAIL

SCALE: NONE



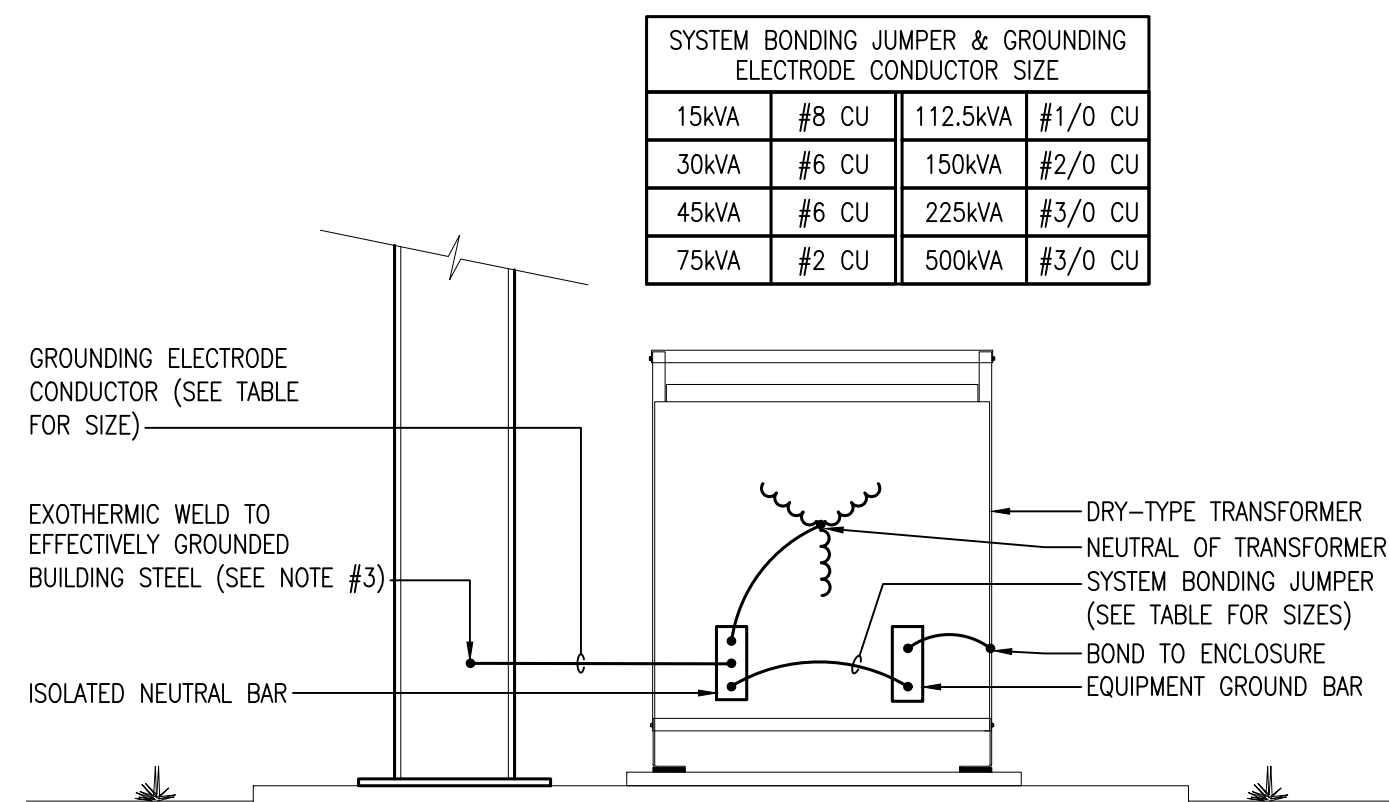
### SECTION "C-C" PRIMARY DUCT BANK DETAIL

SCALE: NONE



### TRANSFORMER WALL MOUNTING DETAIL

SCALE: NONE



### TRANSFORMER GROUNDING SCHEMATIC

SCALE: NONE

#### NOTES:

1. TRANSFORMER GROUNDING MUST COMPLY WITH NEC ARTICLE 250.
2. ALL GROUND CONNECTION AREAS SHALL BE PREPARED BY GRINDING OR WIRE BRUSH CLEANING. ALL SURFACES AFFECTED SHALL BE PAINTED WITH RUST INHIBITING PAINT AFTER WELDING IS COMPLETED.
3. IF EFFECTIVELY GROUNDING BUILDING STEEL IS NOT PRESENT DUE TO BUILDING CONSTRUCTION, PROVIDE CONNECTION TO EFFECTIVELY GROUND METAL WATER PIPE WITHIN 5'-0" OF POINT OF ENTRANCE OF PIPE.
4. SYSTEM BONDING JUMPER AND GROUNDING ELECTRODE CONDUCTOR SIZE TABLE IS ONLY APPLICABLE TO TRANSFORMERS WITH A 208/120V, 3Ø SECONDARY.
5. THIS DETAIL ONLY APPLIES TO DELTA / GROUND WYE STEP DOWN DRY TYPE TRANSFORMERS.

DESIGNER / BUILDER

**ARCO**  
DESIGN/BUILD  
INDUSTRIAL

44 SOUTH BROADWAY, SUITE 1003  
WHITE PLAINS, NY 10601  
P: 914.821.5535 F: 914.306.8010

**ADBI** DESIGN  
SERVICES

PROJECT TITLE

**LINCOLN  
EQUITIES -  
NY-131- BLDG A**

**NY-312 & PUGSLEY RD,  
SOUTHEAST, NY 10509**

ARCHITECT

ADBI / DESIGN SERVICES LLC  
44 SOUTH BROADWAY, SUITE 1003  
WHITE PLAINS, NY 10601

CIVIL ENGINEER

LANGAN ENGINEERING  
300 KIMBALL DRIVE  
PARSIPPANY, NJ 07054

STRUCTURAL ENGINEER

SMITH/ROBERTS AND ASSOCIATES, INC.  
6501 BLUFF RD.  
INDIANAPOLIS, INDIANA 46217

MECHANICAL ENGINEER

NATIONAL DESIGN/BUILD SERVICES  
11840 BORMAN DRIVE  
ST. LOUIS, MO 63146

ELECTRICAL ENGINEER

FXB ENGINEERING  
5 CHRISTY DRIVE, SUITE 307  
CHADDS FORD, PA 19317

PLUMBING ENGINEER

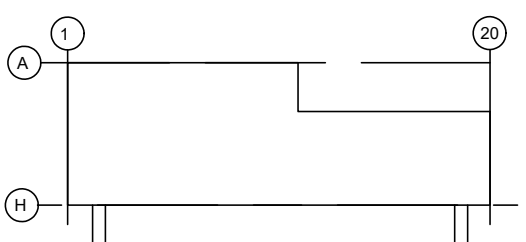
MCCARTHY ENGINEERING ASSOCIATES,  
INC.  
315 EAST SECOND STREET  
BOYERTOWN, PA 19512

FIRE PROTECTION ENGINEER

S A COMUNALE CO. INC.  
2900 NEWPARK DRIVE  
BARBERTON, OH 44203

SEAL

KEY PLAN



SUBMITTALS

| NO. | DATE     | DESCRIPTION      |
|-----|----------|------------------|
| A   | 05.27.22 | ISSUE FOR REVIEW |
| 0   | 06.10.22 | ISSUE FOR PERMIT |

PROJECT NO.

AS286-21 NY131

DRAWN BY

FXB

SHEET TITLE

**ELECTRICAL  
DETAILS**

SHEET NO.

**E6.0**