

LEGEND AND ABBREVIATIONS

- ----

—○—

—◐—

—

—○—

—◐—
- SANITARY PIPING (SAN)

SANITARY VENT PIPING (SV)

PIPE TURNING UP

PIPE TURNING DOWN
- P--

CONT

DFU

DWG

EQUIP

EW

FD

FF, EL

HTR

INV, EL

TYP

VTR

WTR

#
- FIXTURE REFERENCE NUMBER

CONTINUATION

DRAINAGE FIXTURE UNIT

DRAWING

EQUIPMENT

ELECTRIC WATER COOLER

FLOOR CLEANOUT

FLOOR DRAIN

FINISHED FLOOR ELEVATION

HEATER

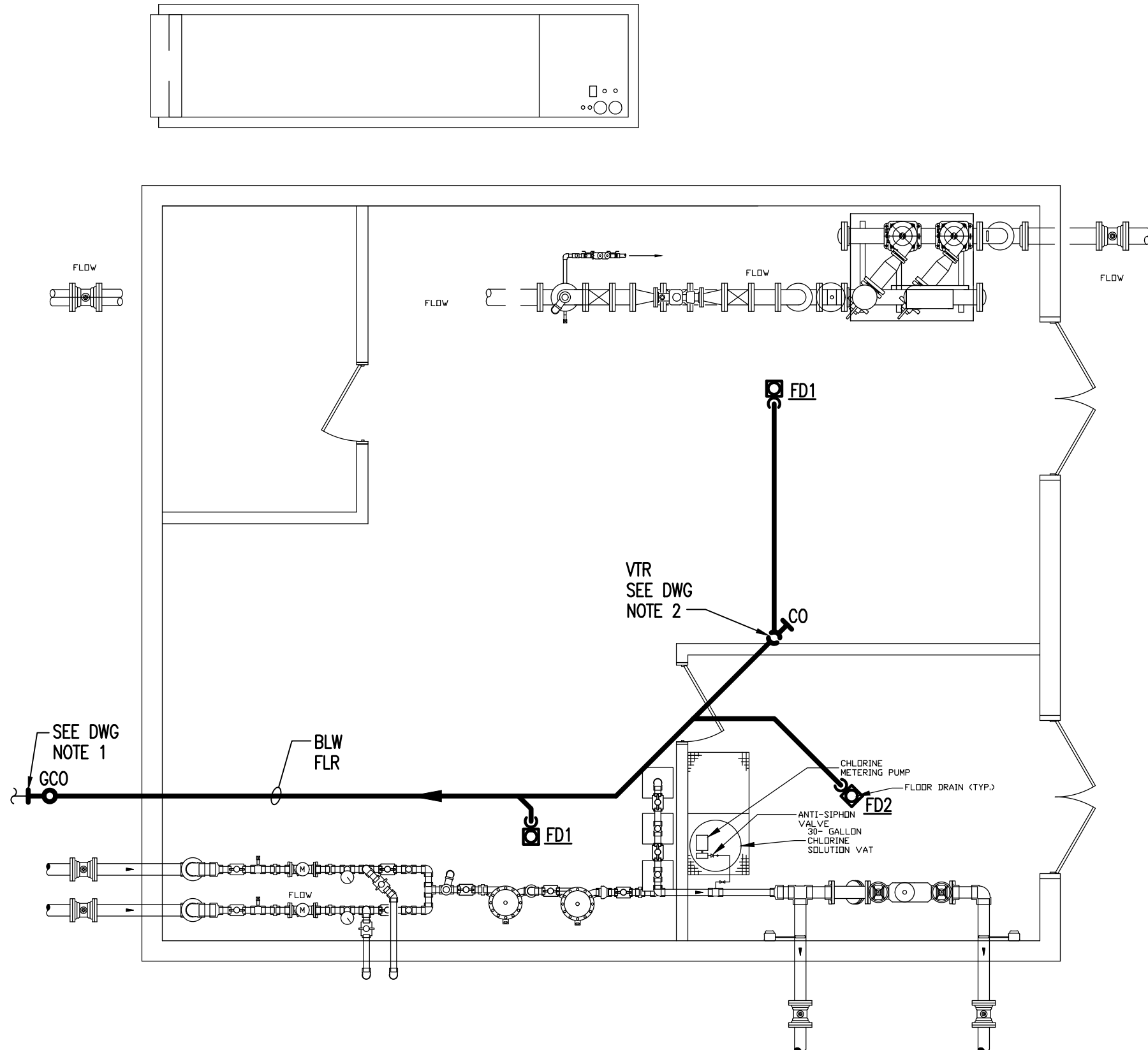
INVERT ELEVATION

TYPICAL

VENT THRU ROOF

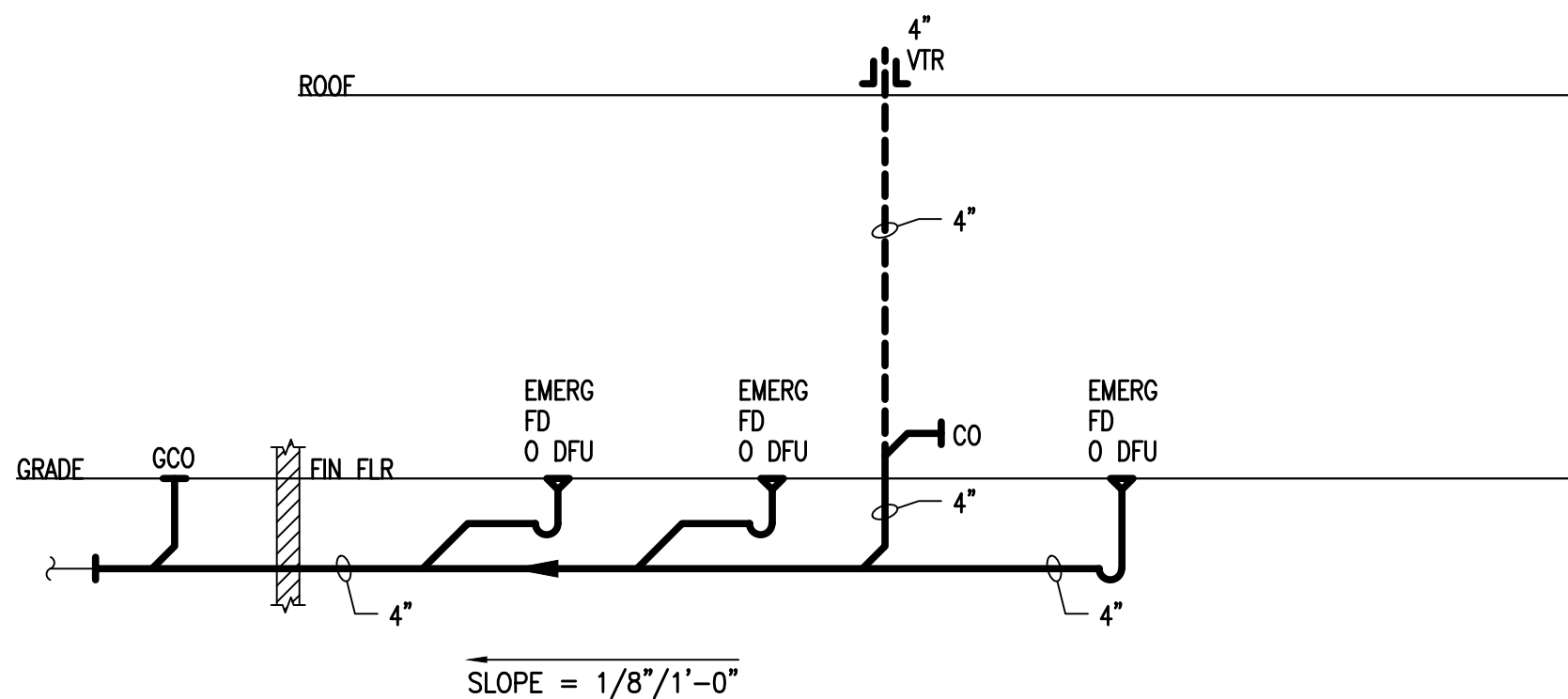
WATER

NUMBER



PLUMBING PUMP HOUSE PLAN – DRAINAGE & VENT PIPING
SCALE: 1/4" = 1'-0"

PLUMBING DRAINAGE SPECIALTIES SCHEDULE					
REF NO	DESCRIPTION	SAN (IN)	TRAP (IN)	VENT (IN)	REMARKS
FD1	FLOOR DRAIN, ASME A112.6.3 - TWELVE INCH ROUND STRAINER HEAVY DUTY DRAIN WITH CAST IRON TRACTOR GRATE, DUCO CAST IRON DEEP BODY AND FLASHING COLLAR AND A FOUR INCH BOTTOM OUTLET, MODEL 2141Y, MANUFACTURED BY JAY R. SMITH MFG. CO.	4	4	2	GENERAL AREA SEE NOTE 1
FD2	FLOOR DRAIN, ASME A112.6.3 - SHALL BE JAY R. SMITH MFG. CO. FIGURE NUMBER 2010C, DUCO CAST IRON BODY WITH FLASHING COLLAR, ADJUSTABLE SIX (6) INCH ROUND NICKEL BRONZE STRAINER AND VANDAL PROOF SCREWS	3	3	2	CHEMICAL ROOM SEE NOTE 1
NOTES: 1. PROVIDE WITH BARRIER TYPE FLOOR DRAIN TRAP SEAL PROTECTION DEVICE COMPLYING WITH ASSE 1072					



DRAINAGE RISER DIAGRAM
NO SCALE

GENERAL SANITARY RISER NOTES:

- ALL DRAINAGE PIPING LESS THAN 3" SHALL BE SLOPED AT 1/4"/1'-0". ALL SANITARY PIPING LARGER THAN 3" OR LARGER SHALL BE AT 1/8"/1'-0" (IN ACCORDANCE WITH THE PLUMBING CODE AND ALL LOCAL REQUIREMENTS).
- ALL DRAINAGE PIPING LOCATED BELOW THE FLOOR SLAB SHALL BE NO LESS THAN 2".
- ALL VENT THROUGH THE ROOF PENETRATIONS (VTR'S) SHALL BE LOCATED NO LESS THEN 10'-0" FROM ALL EXISTING OR NEW OUTSIDE AIR INTAKES. COORDINATE WITH MECHANICAL CONTRACTOR IN THE FIELD.

GENERAL NOTES:

- ALL PLUMBING WORK SHALL CONFORM TO THE NEW YORK UNIFORM CONSTRUCTION CODES, 2020 NEW YORK PLUMBING CODE (2019 INTERNATIONAL PLUMBING CODE) AND SUBSEQUENT AMENDMENTS THERETO AS ADOPTED BY TOWN OF SOUTHEAST, NEW YORK AND SUBSEQUENT AMENDMENTS THERETO.
- DRAWINGS ARE DIAGRAMMATIC. COORDINATE ALL FLOOR DRAIN LOCATIONS WITH PUMP HOUSE EQUIPMENT SUPPLIER AND PIPE ROUTING WITH OTHER TRADES AND ARCHITECTURAL DETAILS PRIOR TO INSTALLATION.
- THE PLUMBING CONTRACTORS UTILITY WORK SHALL INCLUDE, BUT NOT BE LIMITED TO, THE FOLLOWING:
DRAINAGE SYSTEM – CONNECT BUILDING DRAIN PIPING AS SHOWN TO THE BUILDING SEWER.

DRAWING NOTES:

- CONNECT BUILDING DRAINAGE PIPING AS SHOWN TO BUILDING SEWER. REFER TO SITE UTILITY PLANS FOR LOCATION. PRIOR TO THE START OF ANY NEW DRAINAGE SYSTEM WORK THIS CONTRACTOR IS RESPONSIBLE FOR VERIFICATION OF INVERT ELEVATION AT TIE-IN POINT AND ROUTING WITH BUILDING FOOTINGS.
- ROUTE VENT PIPING EXPOSED ON WALL AND CONNECT TO VENT THROUGH ROOF AS SHOWN ON DRAINAGE RISER DIAGRAM.

M

McCarthy

ENGINEERING ASSOCIATES, INC.

www.McCarthy-Engineering.com

2500 East High Street, Suite 600

Pottstown, PA 19464

Phone: 610.379.5001

Project No.

221001

DESIGNER / BUILDER

ARCO

DESIGN/BUILD INDUSTRIAL

44 SOUTH BROADWAY, SUITE 1003
WHITE PLAINS, NY 10601
P: 914.821.5535 F: 914.306.6010

ADBI / DESIGN SERVICES

PROJECT TITLE

LINCOLN
EQUITIES -
PUMP HOUSE

NY-312 & PUGSLEY RD,
SOUTHEAST, NY 10509

ARCHITECT

ADBI / DESIGN SERVICES LLC
44 SOUTH BROADWAY, SUITE 1003
WHITE PLAINS, NY 10601

CIVIL ENGINEER

LANGAN ENGINEERING
300 KIMBALL DRIVE
PARSIPPANY, NJ 07054

STRUCTURAL ENGINEER

SMITH/ROBERTS AND ASSOCIATES, INC.
6501 BLUFF RD
INDIANAPOLIS, INDIANA 46217

MECHANICAL ENGINEER

NATIONAL DESIGN/BUILD SERVICES
11840 BORMAN DRIVE
ST. LOUIS, MO 63146

ELECTRICAL ENGINEER

FAB ENGINEERING
6 CHRISTY DRIVE, SUITE 307
CHADDS FORD, PA 19317

PLUMBING ENGINEER

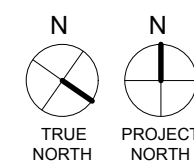
JAMES C. MCCARTHY, P.E.
315 EAST SECOND STREET
BOVETOWN, PA 19512

FIRE PROTECTION ENGINEER

S A COMMUNALE CO. INC.
2900 NEWPARK DRIVE
BARBERTON, OH 44203

SEAL

JOSEPH V. DIGIORGIO | NY: 042948



SUBMITTALS

NO.	DATE	DESCRIPTION
0	02 -- 2022	ISSUE FOR PERMIT

PROJECT NO.

AS286-21/ NY131

DRAWN BY

ZPC

SHEET TITLE

PLUMBING
PUMP HOUSE PLAN,
DIAGRAMS AND
SPECIFICATIONS

SHEET NO.

P-1.10

FINAL REVIEW 03/11/2022
NOT FOR CONSTRUCTION