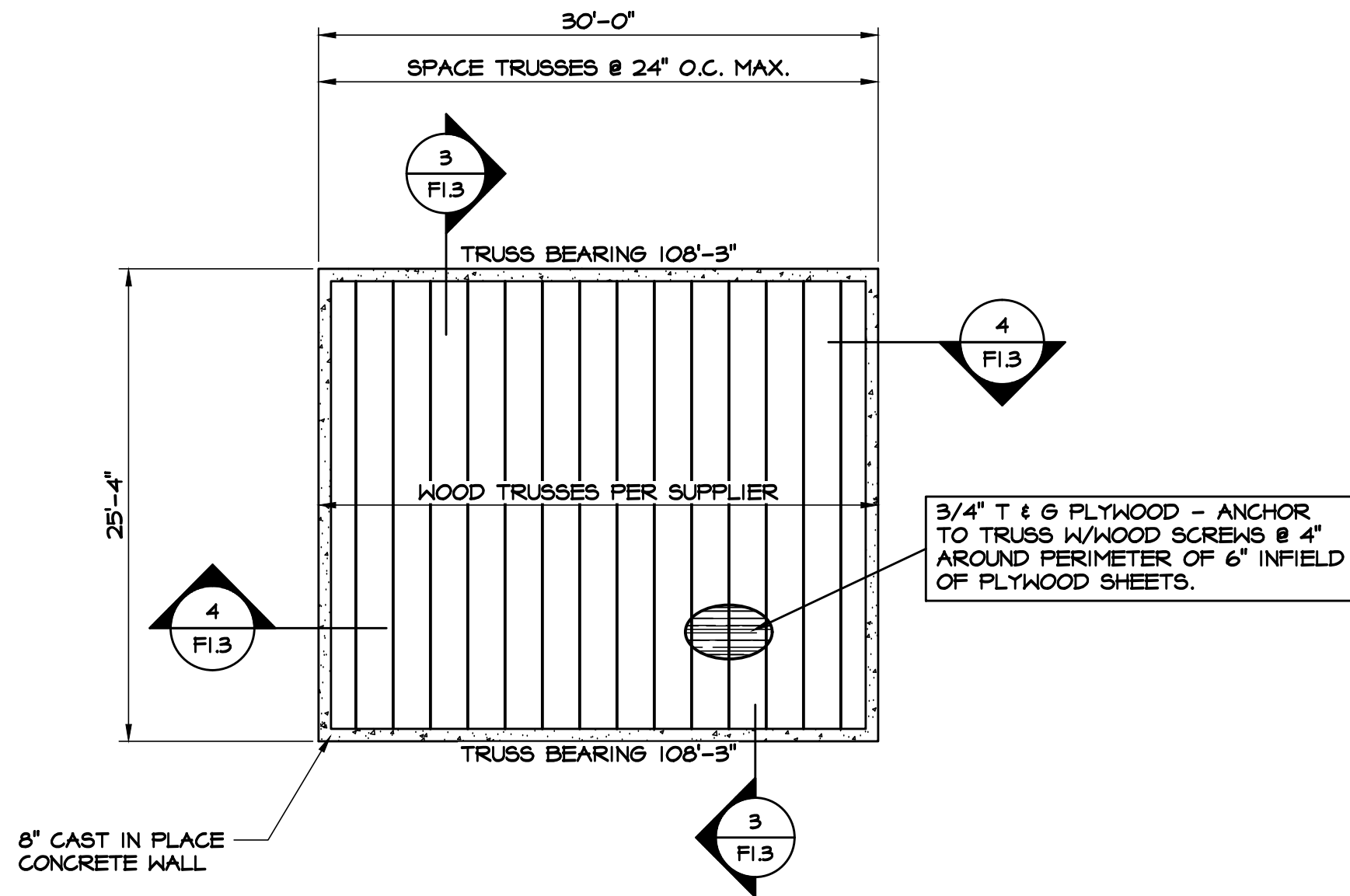


## PUMP HOUSE FOUNDATION PLAN

SCALE: 1/8" = 1'-0"

- NOTES:
1. FINISH FLOOR ELEVATION = 100'-0". (USGS PER CIVIL DWGS.)
  2. TOP OF FOOTING ELEVATION = 99'-0".
  3. SEE SITE PLAN FOR LOCATION OF PUMP HOUSE.
  4. C.J. INDICATES CONTROL JOINT IN CMU, FULL HEIGHT.

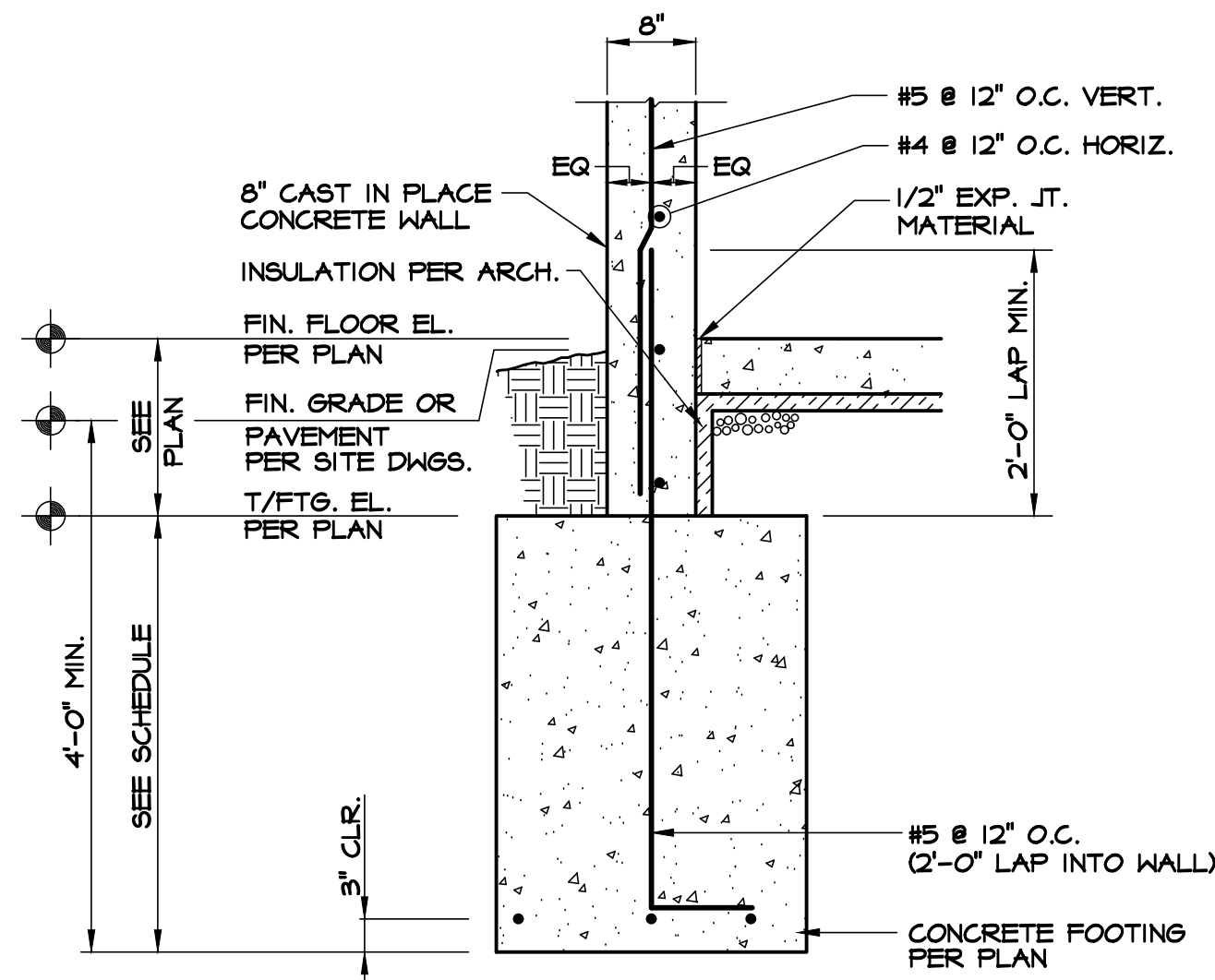
WALL FOOTING SCHEDULE		
MARK	FOOTING SIZE N x D	FOOTING REINFORCEMENT
WFI	2'-0"x3'-2"	2 - #4 CONT. BOTTOM



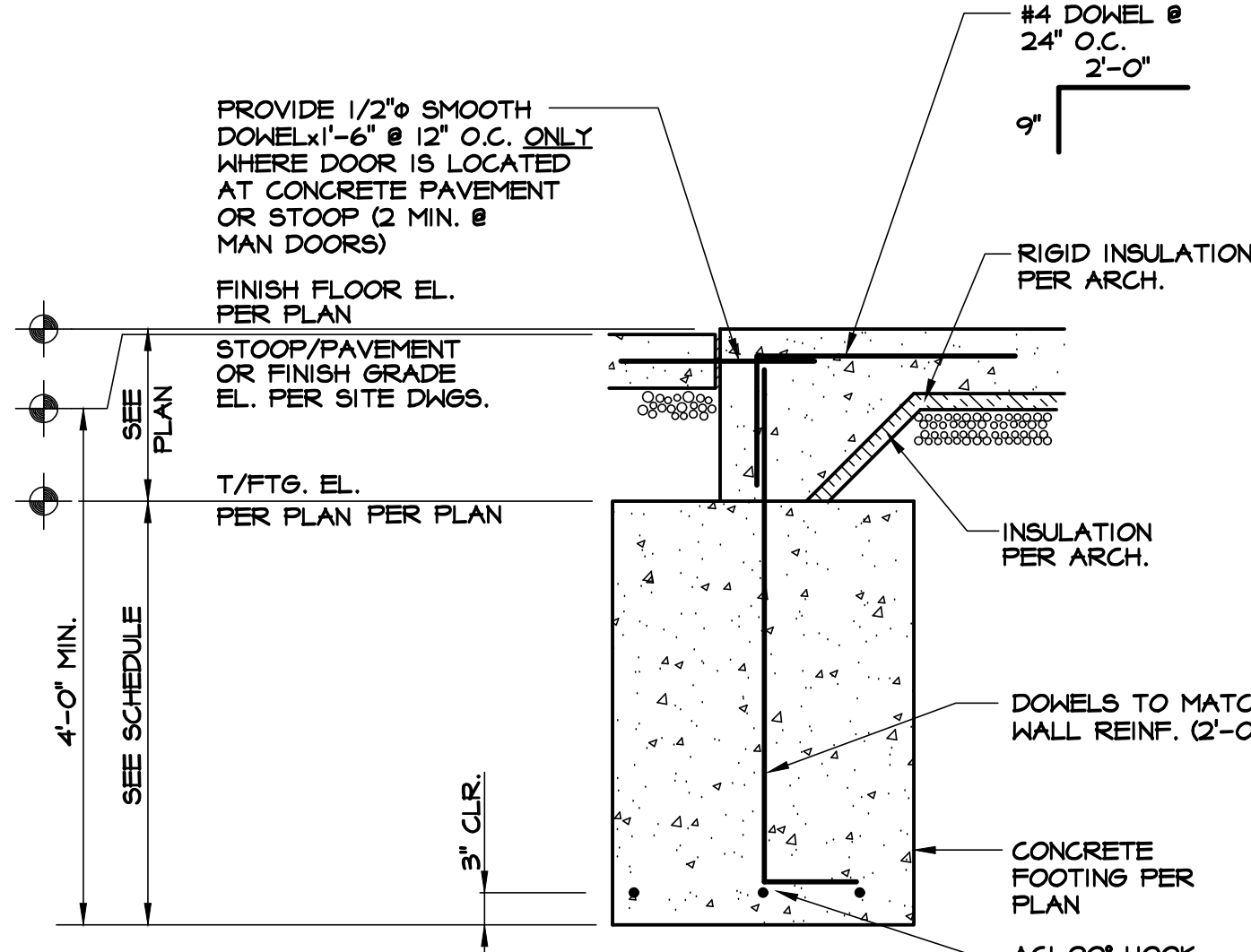
## PUMP HOUSE ROOF FRAMING PLAN

SCALE: 1/8" = 1'-0"

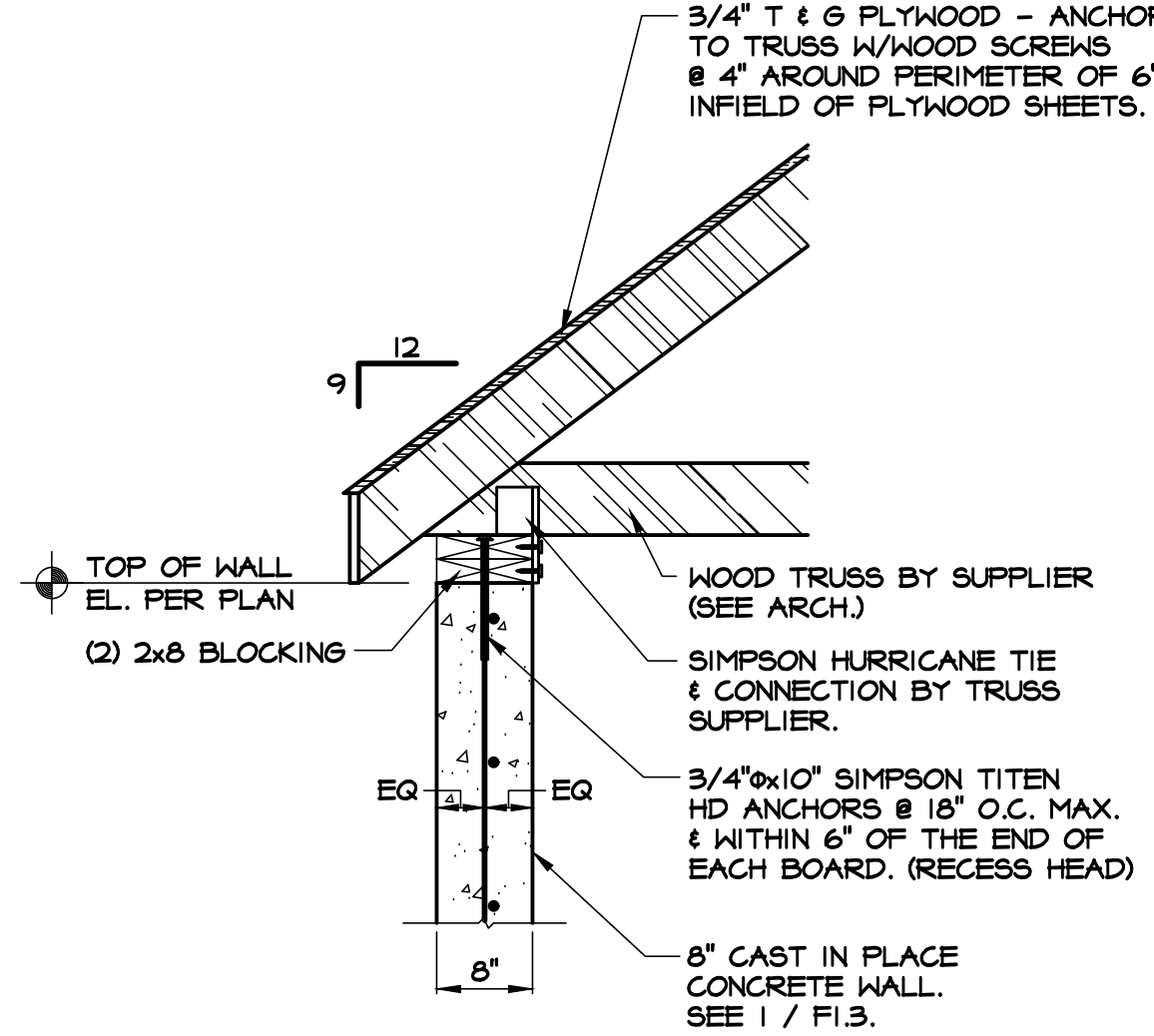
- NOTES:
1. TOP OF WALL ELEVATION = 108'-0".
  2. DEAD LOAD = 10 PSF
  3. LIVE LOAD = 20 PSF
  4. NET UPLIFT = 20 PSF



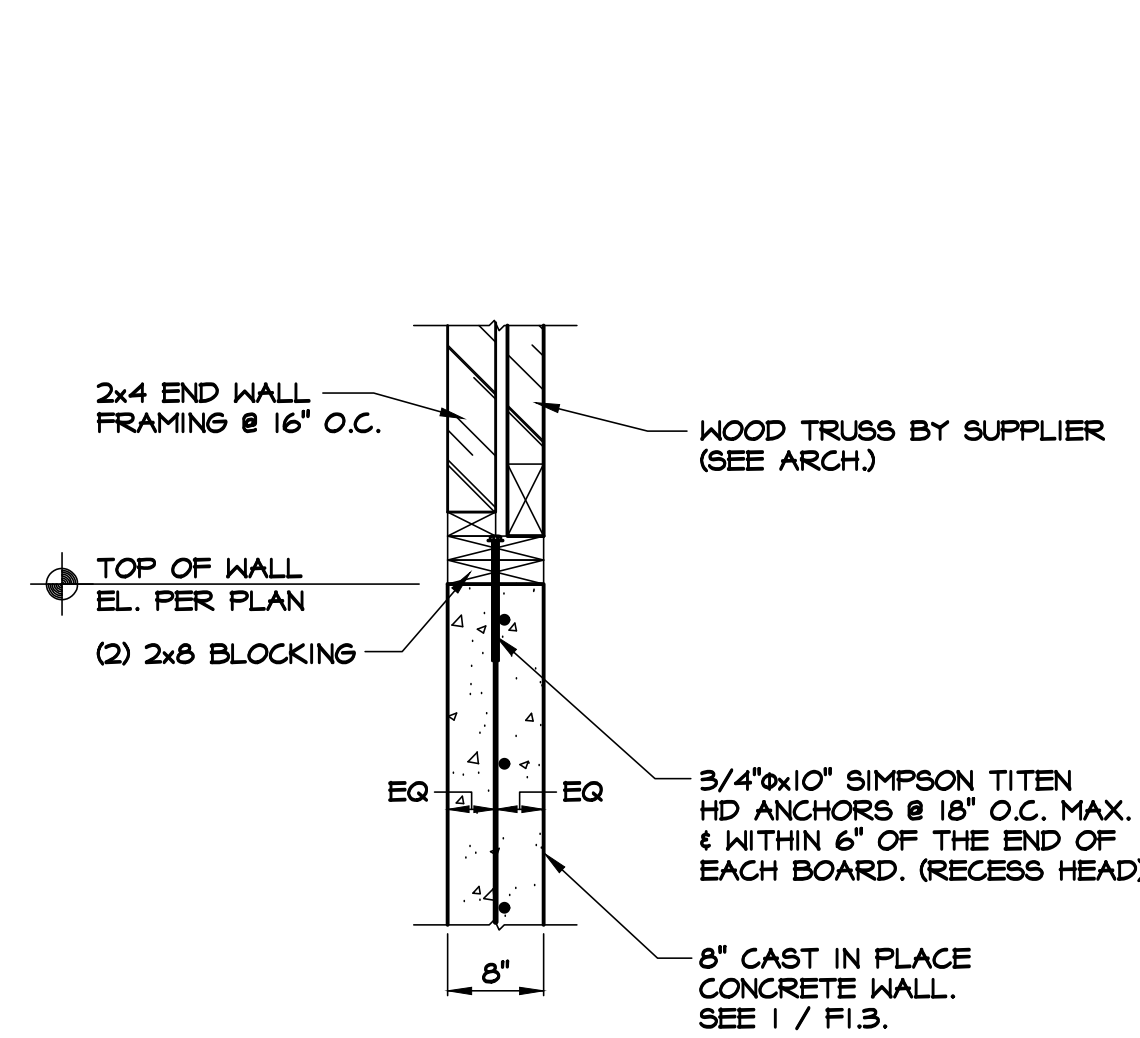
SECTION 1  
SCALE: 3/4" = 1'-0"



SECTION 2  
SCALE: 3/4" = 1'-0"



SECTION 3  
SCALE: 3/4" = 1'-0"



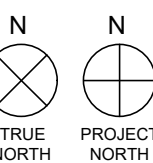
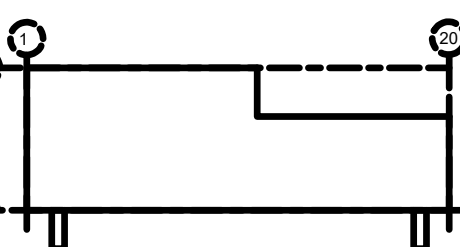
SECTION 4  
SCALE: 3/4" = 1'-0"

SEAL



THOMAS G. SMITH | NY: 042283

KEY PLAN



SUBMITTALS		
NO.	DATE	DESCRIPTION
12.08.21		PROGRESS
1.28.22		PROGRESS
2.28.22		95% PROGRESS
3.9.22		100% PROGRESS
5.24.22		PUMP HOUSE
6.9.22		PERMIT
7.8.22		FTG STEPS & JOIST SEAT @ A
8.10.23		PUMP HOUSE REVISION

PROJECT NO. AS286-21 | NY131 | 21-154

DRAWN BY DTC

SHEET TITLE  
**PUMP HOUSE  
FOUNDATION AND  
ROOF FRAMING  
PLANS**

SHEET NO.

**F1.3**