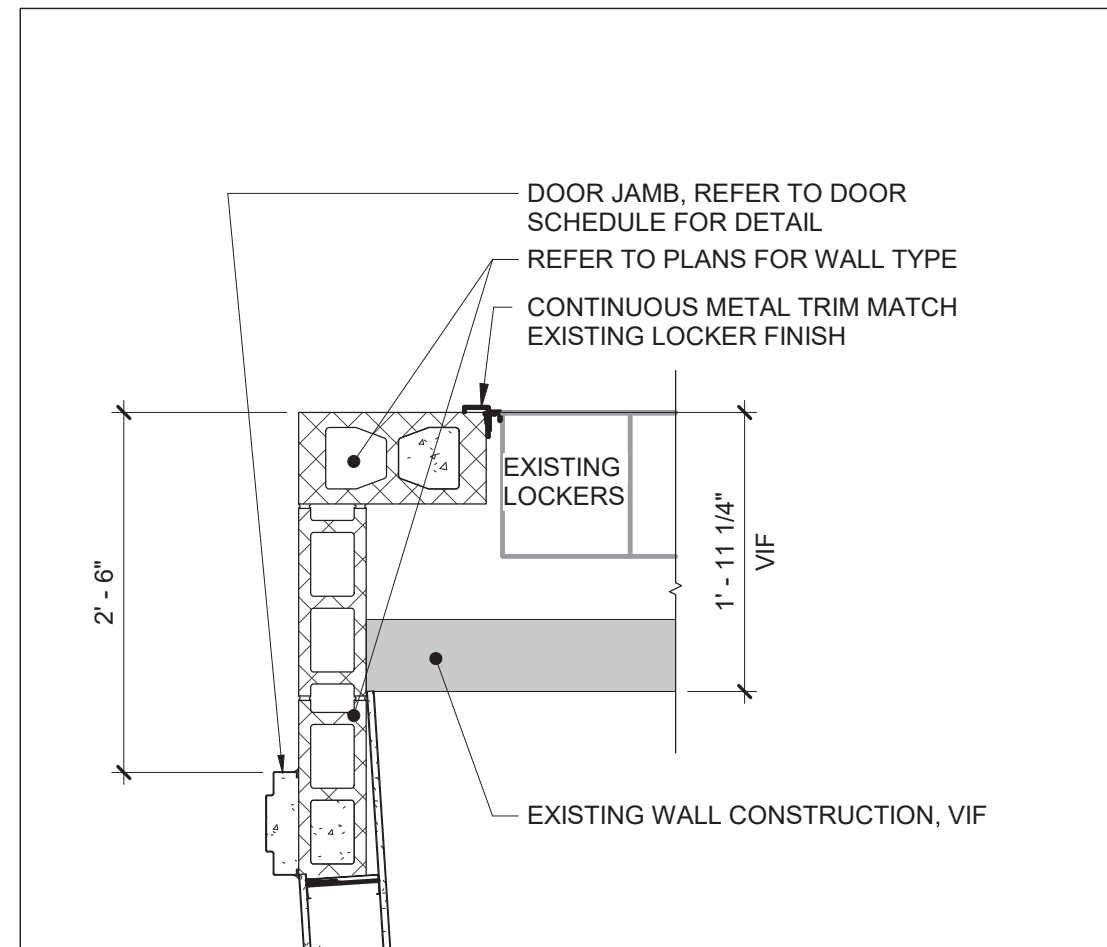
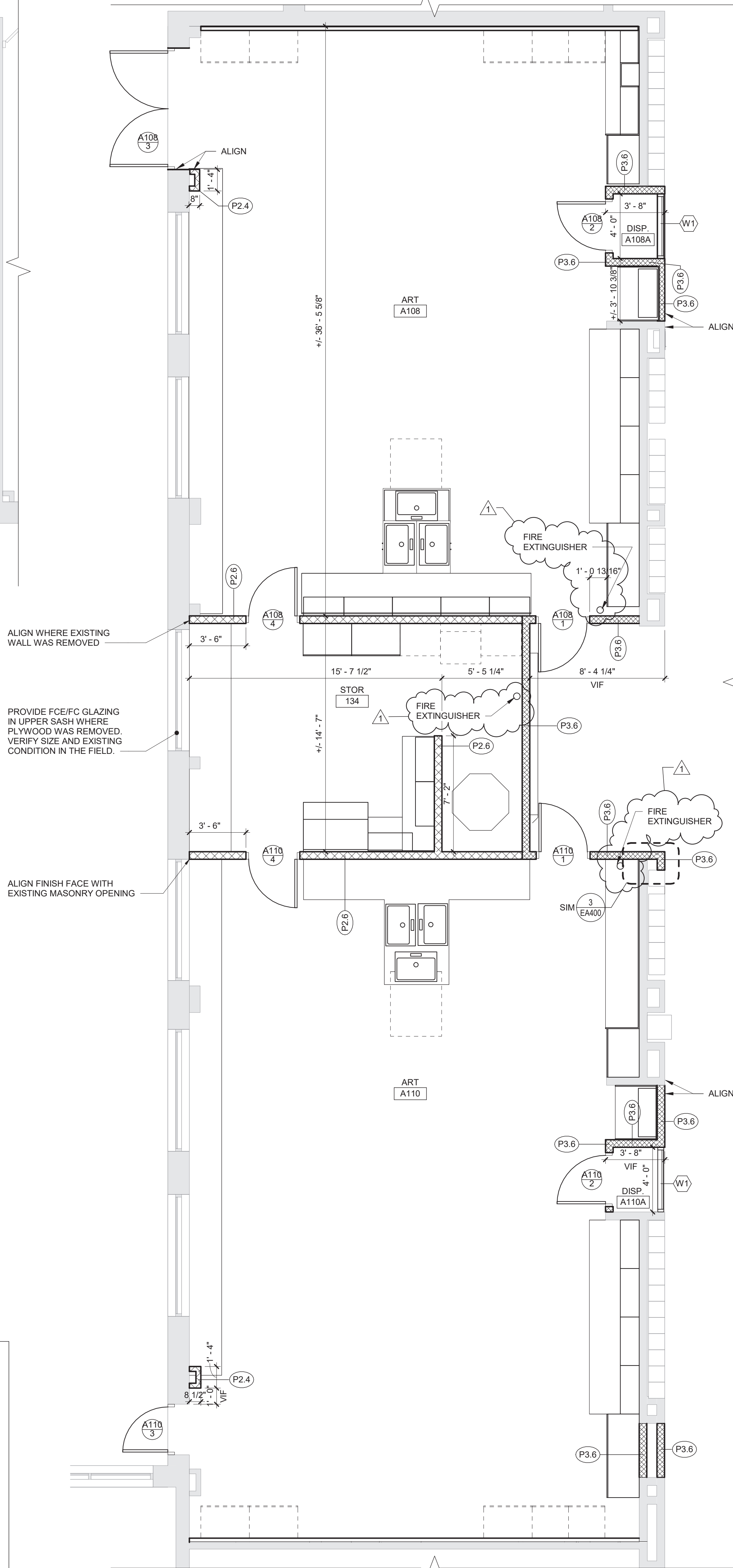


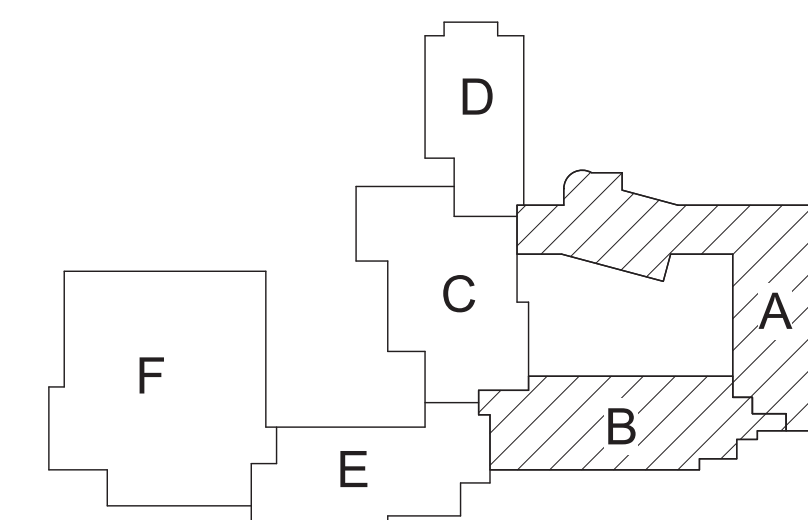
2 First Floor Area B Enlarged Science Rooms Plan
1/4" = 1'-0"



3 Locker Plan Detail
3/4" = 1'-0"



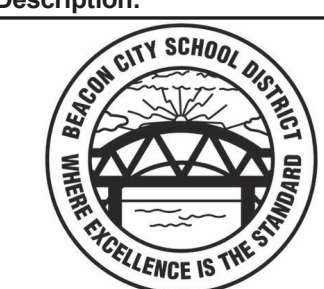
1 First Floor Area A Enlarged Art Rooms Plan
1/4" = 1'-0"



Key Plan
N.T.S.

S.E.D. Control No. 13-02-00-01-0-004-023

1 9/7/23 BID ADDENDUM NO. 3
Rev. No.: Date: Description:



complex world | CLEAR SOLUTIONS

Tetra Tech Engineers, Architects
& Landscape Architects, P.C.



Beacon City School District
Beacon, New York

Reconstruction to:
Rombout Middle School

Enlarged Plans and Details

Drawn By: TTAE Date: 10/28/2022 Drawing Number:
Project No.: 279180-22004
EA400