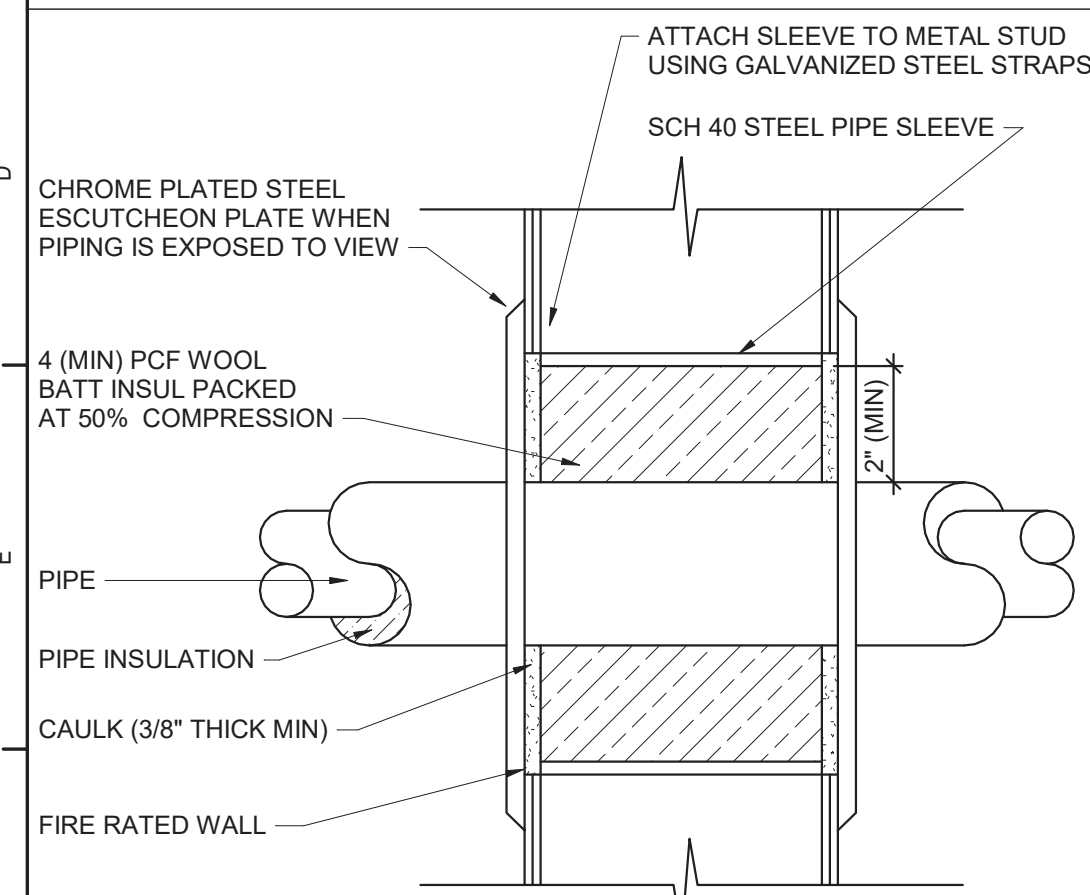


Plumbing Fixture Schedule

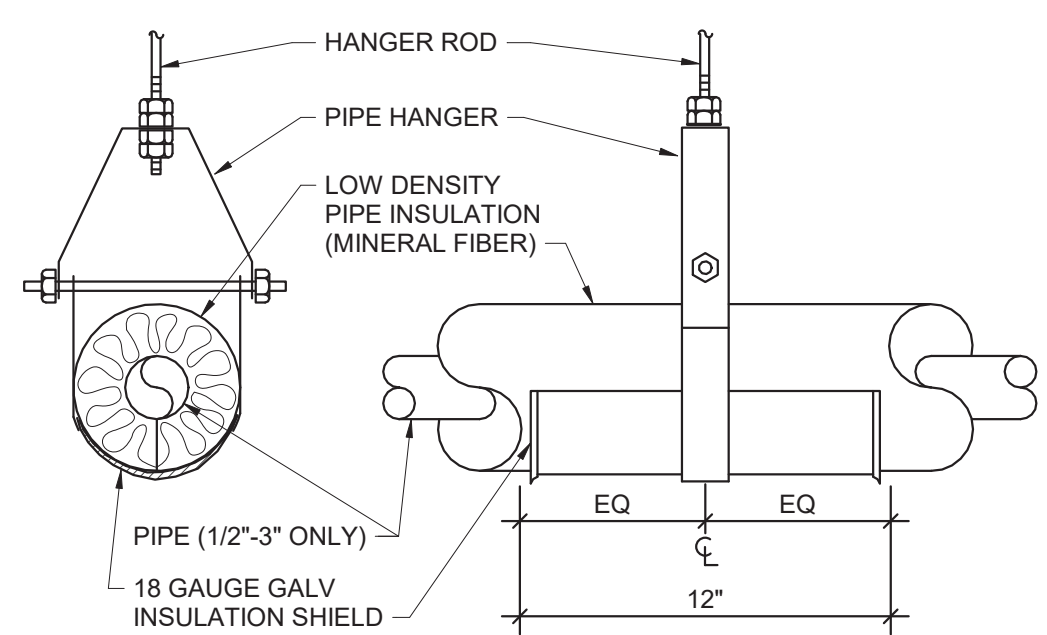
DWG LABEL	ROUGH-IN CONNECTION SIZE (INCHES)				BARRIER FREE	AGE GROUP	RIM HEIGHT	DESCRIPTION	NOTES
	SAN	VENT	CW	HW					
WC "A"	4	2	1	-	NO	ADULT	15"	VITREOUS CHINA, WALL MOUNTED WITH SUPPORT, TOP SPUD, MANUAL DUAL FLUSH VALVE AND SEAT.	1, 2
WC "B"	4	2	1	-	YES	ADULT	18"	ACCESSIBLE, VITREOUS CHINA, WALL MOUNTED WITH SUPPORT, TOP SPUD, MANUAL DUAL FLUSH VALVE AND SEAT.	1, 2
LAV "A"	1 1/2	1 1/2	1/2	1/2	NO	ADULT	31"	VITREOUS CHINA, WALL MOUNTED WITH MANUAL, HARD WIRED SENSOR FAUCET, SUPPLIES, TAILPIECE AND TRAP.	1, 2
LAV "B"	1 1/2	1 1/2	1/2	1/2	YES	ADULT	34"	ACCESSIBLE, VITREOUS CHINA, WALL MOUNTED WITH MANUAL, HARD WIRED SENSOR FAUCET, SUPPLIES, OFFSET TAILPIECE, TRAP, AND INSULATION KIT.	1, 2, 3
INT WH	-	-	3/4	-	-	-	-	CONCEALED OUTLET, SELF DRAINING MODERATE CLIMATE WALL HYDRANT.	

NOTES:

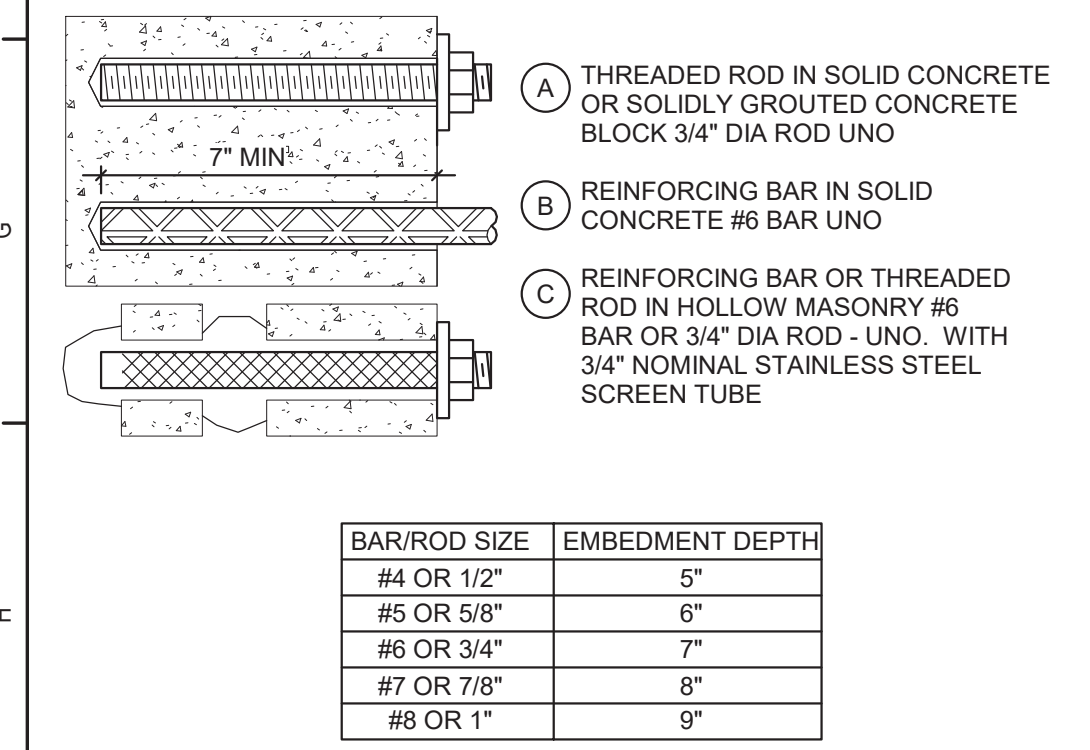
- REFER TO TOILET ROOM PLANS ON ARCHITECTURE DRAWINGS FOR FIXTURE CENTERLINE DIMENSIONS.
- SIZES INDICATED ARE MINIMUM. LARGER SIZES SPECIFICALLY INDICATED ON DRAWINGS SUPERCEDE MINIMUM SIZES INDICATED IN THIS SCHEDULE.
- REFER TO DETAIL 8/ BP130 FOR ADDITIONAL INFORMATION.



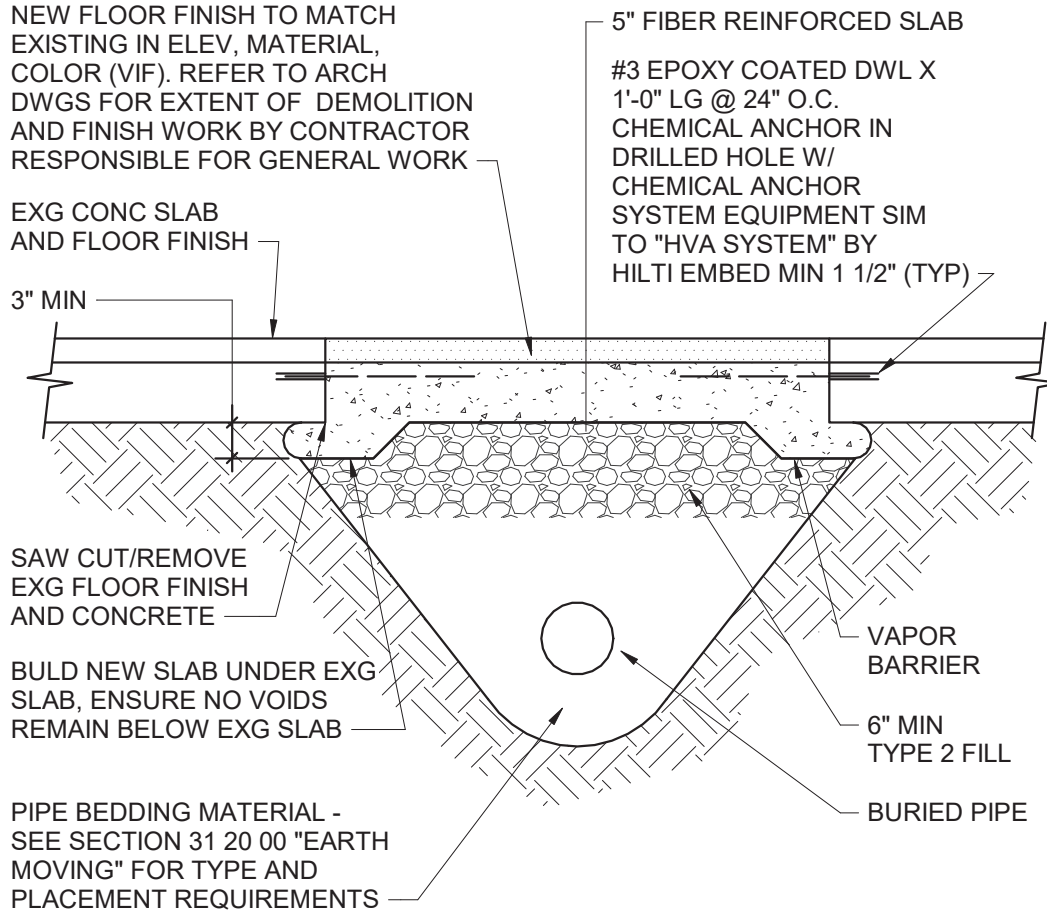
6 Fire Rated Metal Stud Wall Sleeve Detail  
NTS



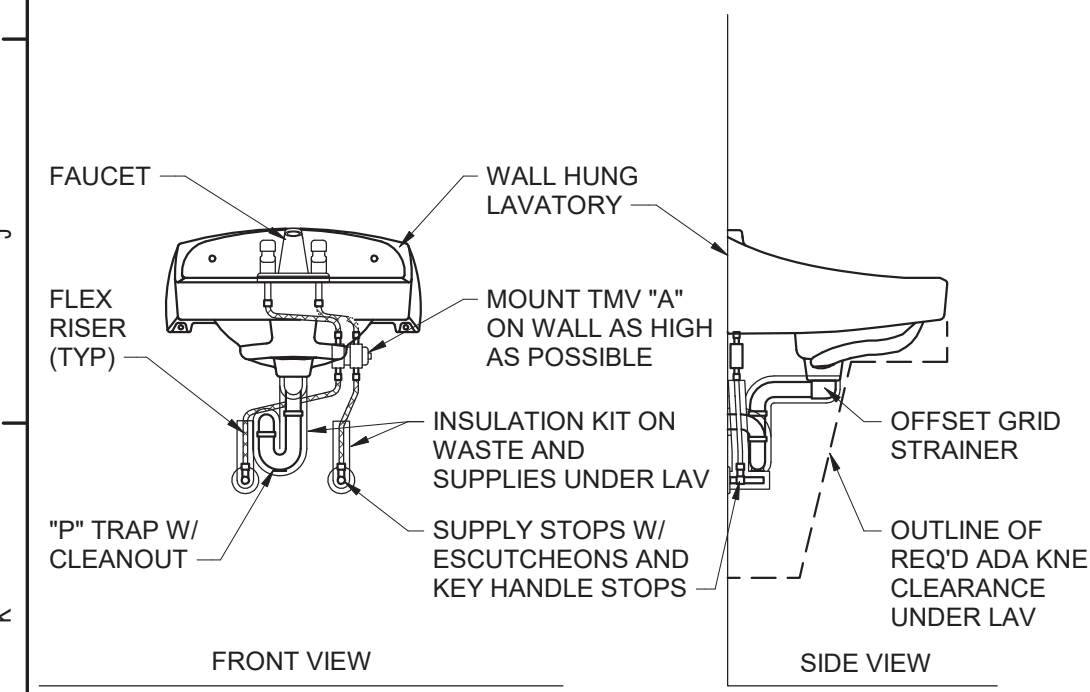
4 Insulation Shield Detail  
NTS



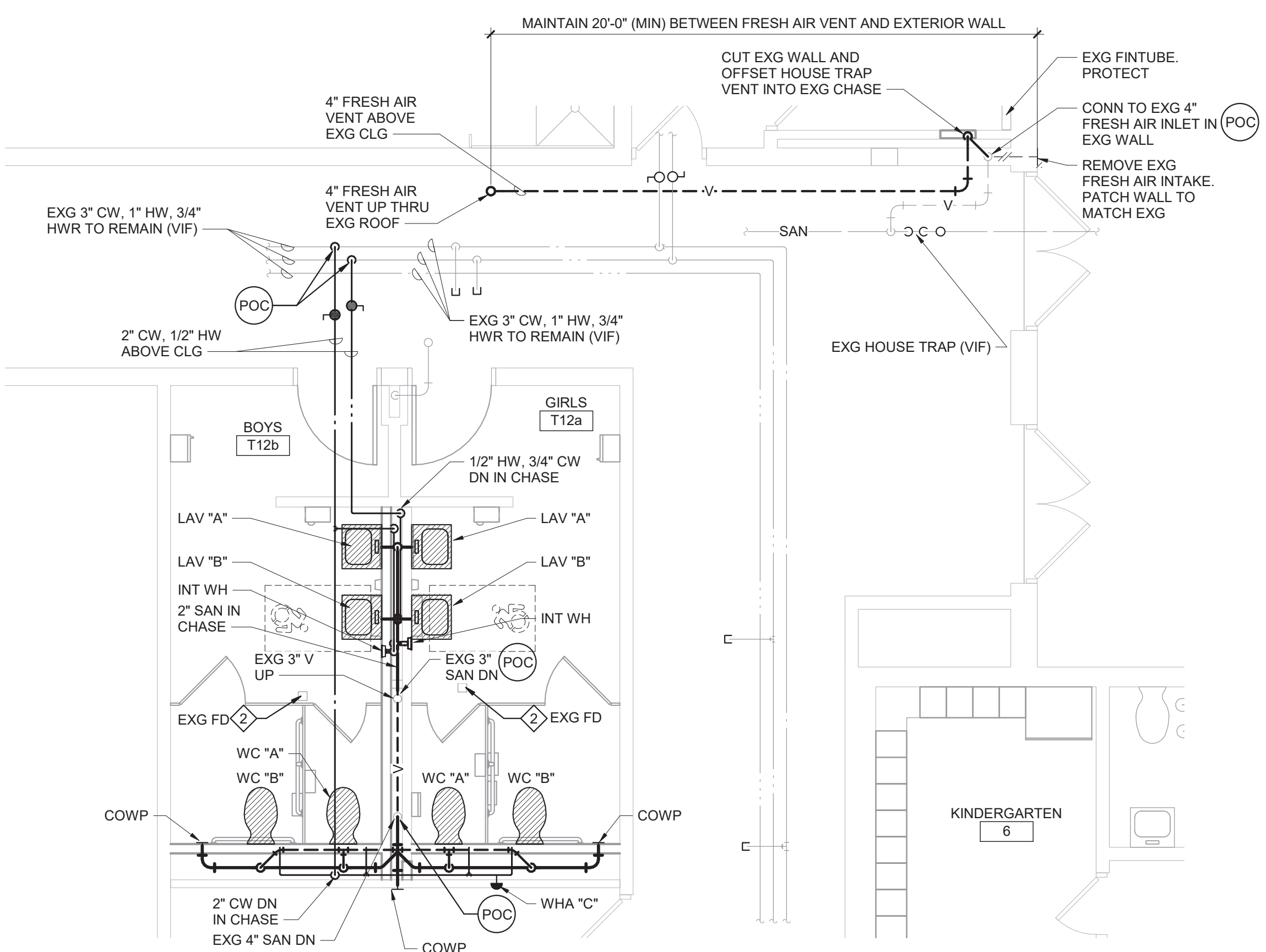
7 Typical Chemical Anchors  
NTS



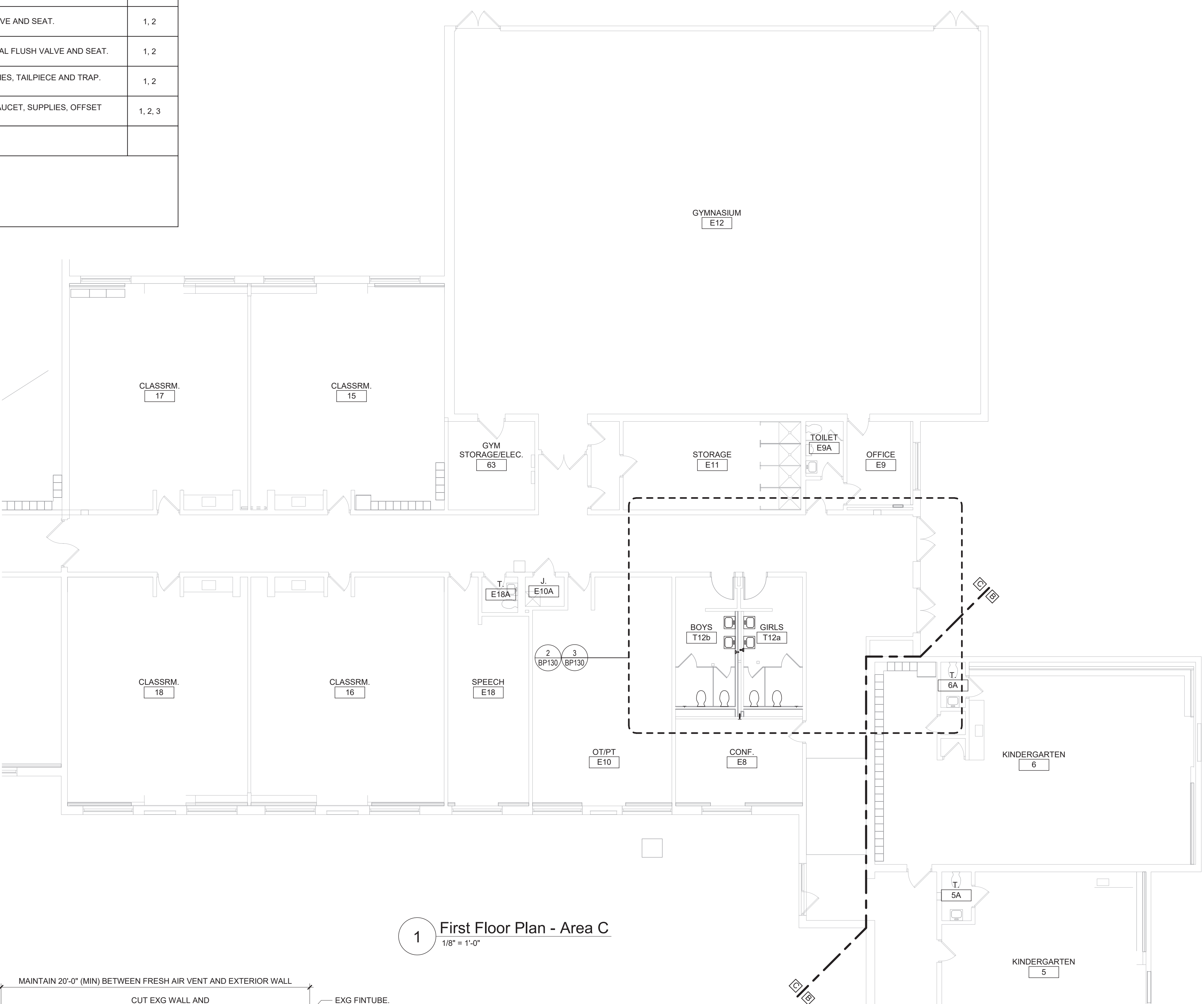
5 Trenching Below Existing Slab Detail  
NTS



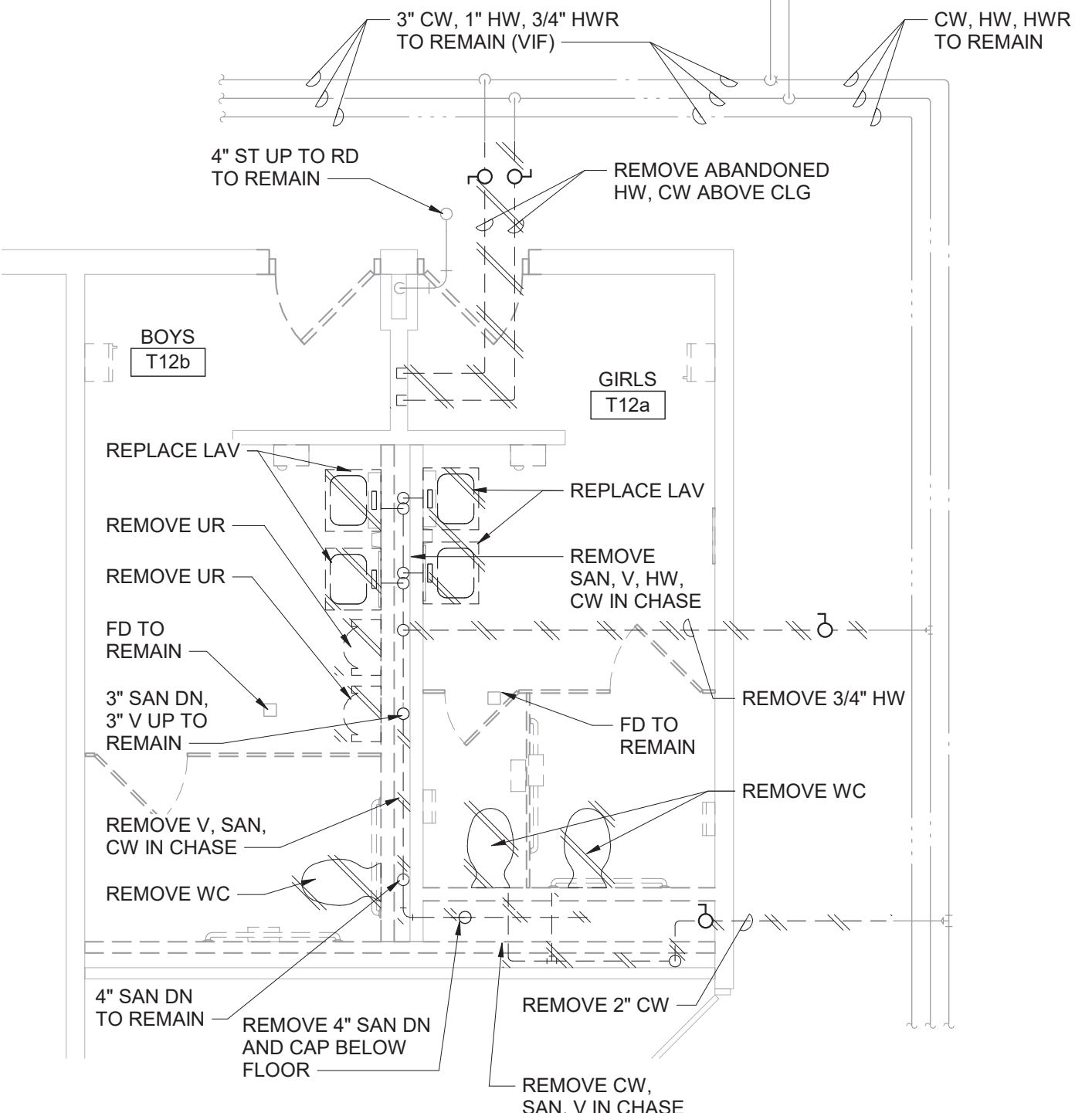
8 ADA Lavatory Rough-in Detail  
NTS



3 Toilet Rooms T12a and T12b Plan  
1/4\"/>



1 First Floor Plan - Area C  
1/8\"/>



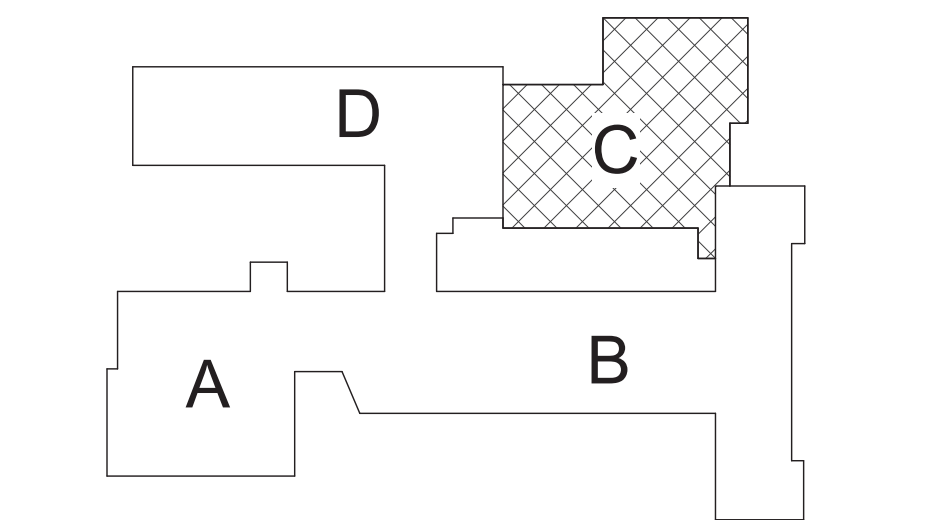
2 Toilet Rooms T12a and T12b Demolition Plan  
1/4\"/>

General Notes

- VERIFY ALL PIPING LOCATIONS, SIZES, AND ARRANGEMENTS IN FIELD PRIOR TO BID. NOTIFY ARCHITECT IN WRITING OF ANY DISCREPANCIES.
- VERIFY IN FIELD INVERT AND DIRECTION OF FLOW IN EXISTING SOIL PIPE WHERE NEW SOIL PIPE IS TO BE CONNECTED TO EXISTING SOIL PIPE.
- LEGALLY DISPOSE OF ALL DEMOLITION DEBRIS.
- INCLUDE TRENCHING, CUTTING AND PATCHING OF FLOORS, WALLS AND CEILINGS, INCLUDING CEILING TILE REMOVAL AND REPLACEMENT, WHEN REQUIRED FOR PLUMBING WORK. PATCH ABANDONED OPENINGS AND DISTURBED FINISHES TO MATCH EXISTING. TAKE PRECAUTIONS TO PROTECT STRUCTURAL INTEGRITY OF FLOOR OR WALLS WHEN TRENCHING OR CUTTING.
- MATERIALS FOR PLUMBING INSTALLATION SHALL BE NEW, UNLESS SPECIFICALLY NOTED OTHERWISE.
- PROVIDE THROUGH PENETRATION FIRESTOPPING FOR FIRE RATED WALLS AND FLOORS. PENETRATIONS THROUGH EXISTING WALLS AND FLOORS ARE CONSIDERED TWO-HOUR PARTITIONS UNLESS SPECIFICALLY NOTED OTHERWISE. REFER TO "A" SERIES OR CODE COMPLIANCE DRAWINGS FOR LOCATION OF FIRE RATED WALLS AND FLOORS.
- REMOVE PLUMBING FIXTURES INDICATED, INCLUDING ASSOCIATED PIPING, FASTENERS, SUPPORTS, ETC. BACK TO POINTS OF CONCEALMENT WITHIN OR BEHIND REMAINING WALLS, BELOW FLOORS OR ABOVE CEILINGS.
- REPLACE OR RELOCATE PLUMBING FIXTURE INDICATED. MODIFY AND EXTEND EXISTING PIPING AS REQUIRED TO MEET FIXTURE MFR'S ROUGH-IN RECOMMENDATIONS AND TO MAKE CONNECTIONS. CONCEAL PIPING WITHIN OR BEHIND WALLS, BELOW FLOORS OR ABOVE CEILINGS. PATCH DISTURBED FINISHES TO MATCH EXISTING UNLESS SPECIFICALLY NOTED OTHERWISE. REFER TO "A" SERIES DWGS FOR EXACT LOCATION AND RIM ELEVATION OF NEW OR RELOCATED FIXTURES.
- REMOVE ABANDONED ACCESSIBLE PIPING TO MAIN BRANCHES, STACKS OR RISERS AS REQUIRED TO ELIMINATE EXPOSED PIPING AND DEAD END PIPING RUNS LONGER THAN 1'-0\"/>

Plumbing Notes

- WORK IS PART OF ALTERNATE NO. 1.
- REPLACE STRAINER ON EXISTING FLOOR DRAIN.



Key Plan  
N.T.S.

S.E.D. Control No. 13-02-00-01-0-006-022

Rev. No.: Date: Description:



complex world | CLEAR SOLUTIONS

Tetra Tech Engineers, Architects & Landscape Architects, P.C.



Beacon City School District  
Beacon, New York

Additions and Alterations to:  
Glenham Elementary School

First Floor Plan - Area C, Details and Schedule

Drawn By: GPD/ sef Date: 10/28/2022 Drawing Number: 279180-22004

BP130