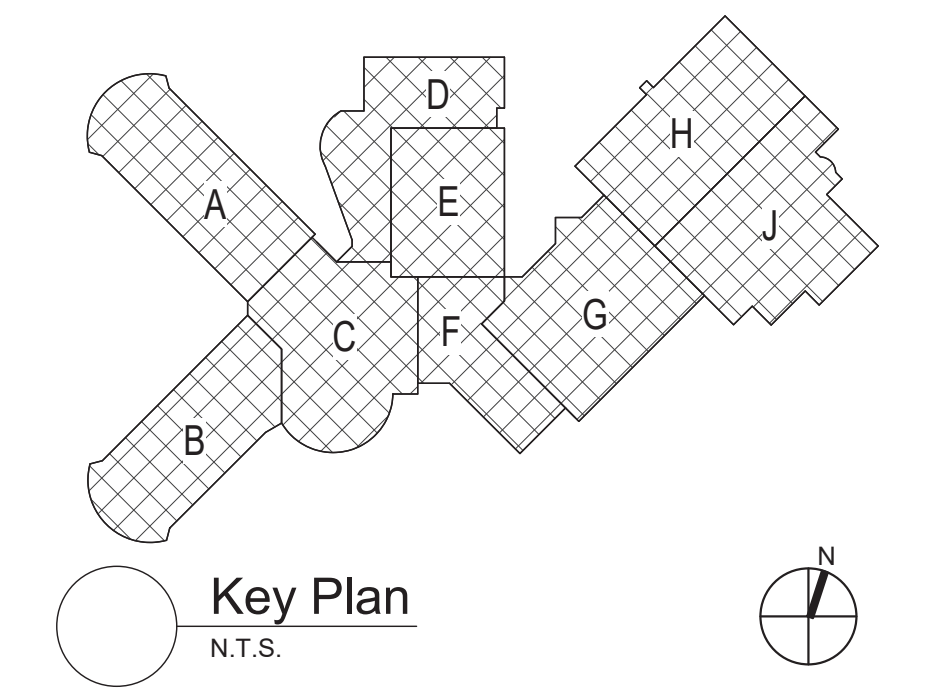


1 First Floor - Key Plan  
3/64" = 1'-0"

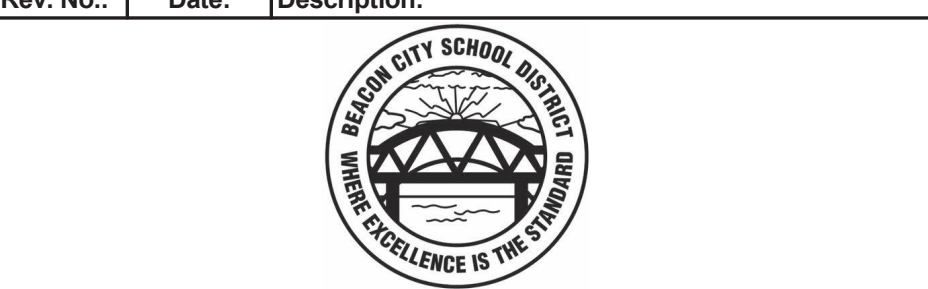
2 Partial Second Floor - Key Plan  
3/64" = 1'-0"

- General Notes**
- A. VERIFY ALL PIPING LOCATIONS, SIZES, AND ARRANGEMENTS IN FIELD PRIOR TO BID. NOTIFY ARCHITECT IN WRITING OF ANY DISCREPANCIES.
  - B. VERIFY IN FIELD INVERT AND DIRECTION OF FLOW IN EXISTING SOIL PIPE WHERE NEW SOIL PIPE IS TO BE CONNECTED TO EXISTING SOIL PIPE.
  - C. LEGALLY DISPOSE OF ALL DEMOLITION DEBRIS.
  - D. INCLUDE TRENCHING, CUTTING AND PATCHING OF FLOORS, WALLS AND CEILINGS, INCLUDING CEILING TILE REMOVAL AND REPLACEMENT, WHEN REQUIRED FOR PLUMBING WORK. PATCH ABANDONED OPENINGS AND DISTURBED FINISHES TO MATCH EXISTING. TAKE PRECAUTIONS TO PROTECT STRUCTURAL INTEGRITY OF FLOOR OR WALLS WHEN TRENCHING OR CUTTING.
  - E. MATERIALS FOR PLUMBING INSTALLATION SHALL BE NEW, UNLESS SPECIFICALLY NOTED OTHERWISE.
  - F. REFER TO DRAWING NO FP401. FOR FIXTURE ROUGH-IN SCHEDULE.
  - G. PROVIDE THROUGH PENETRATION FIRESTOPPING FOR FIRE RATED WALLS AND FLOORS. PENETRATIONS THROUGH EXISTING WALLS AND FLOORS ARE CONSIDERED TWO-HOUR PARTITIONS UNLESS SPECIFICALLY NOTED OTHERWISE. REFER TO "A" SERIES OR CODE COMPLIANCE DRAWINGS FOR LOCATION OF FIRE RATED WALLS AND FLOORS.



S.E.D. Control No. 13-02-00-01-0-020-012

Rev. No.	Date	Description



complex world  
CLEAR SOLUTIONS

Tetra Tech Engineers, Architects  
& Landscape Architects, P.C.

**BID SET**



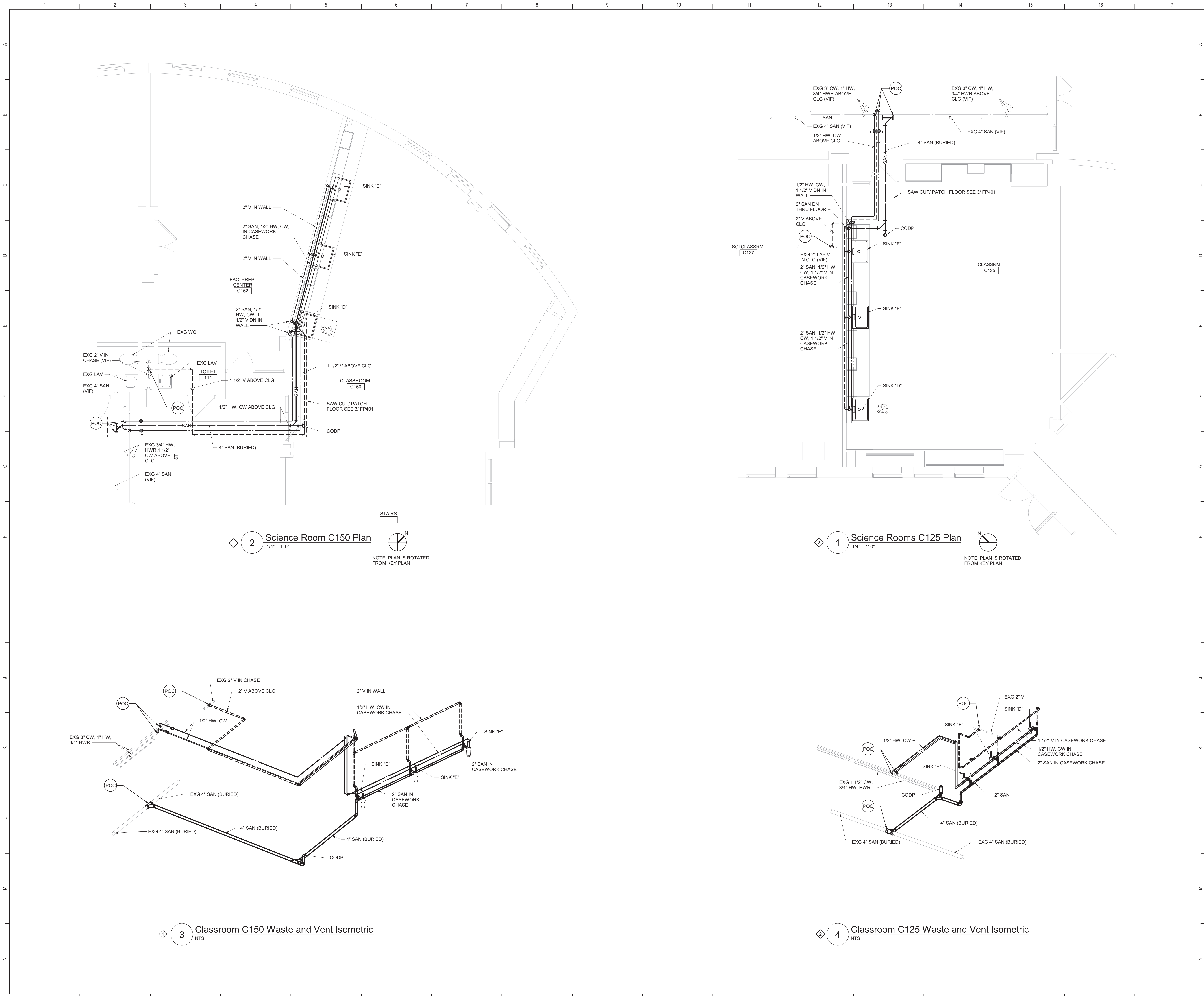
Beacon City School District  
Beacon, New York

Reconstruction to:  
Beacon City High School

First Floor Key Plan

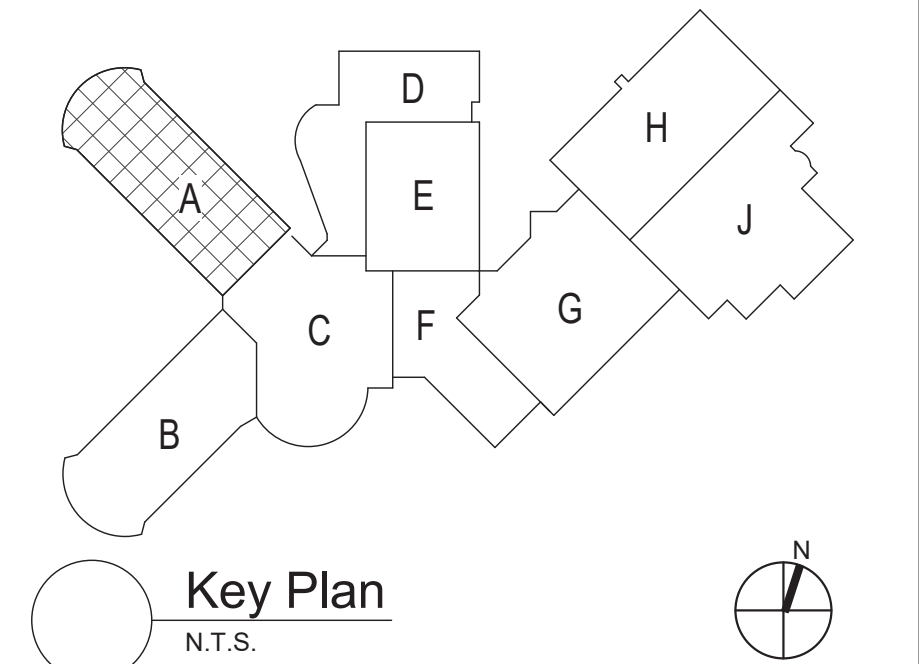
Drawn By: GPD/ sef	Date: 10/28/2022	Drawing Number:
Project No.: 279180-22004	FP050	





- Plan Notes**
- A. REFER TO DRAWING NO. FP050 FOR GENERAL NOTES.
  - B. REMOVE ABANDONED ACCESSIBLE PIPING TO MAIN BRANCHES, STACKS OR RISERS AS REQUIRED TO ELIMINATE EXPOSED PIPING AND DEAD END PIPING RUNS LONGER THAN 1'-0". COORDINATE CONCEALMENT OF PIPING WITH FINAL CONSTRUCTION OF WALLS, FLOORS AND CEILINGS.

- Plumbing Notes**
- 1. WORK IS A PART OF ALTERNATE NO. 12.
  - 2. WORK IS A PART OF ALTERNATE NO. 13.



S.E.D. Control No. 13-02-00-01-0-020-012

Rev. No.:	Date:	Description:



complex world | CLEAR SOLUTIONS

Tetra Tech Engineers, Architects & Landscape Architects, P.C.

**BID SET**



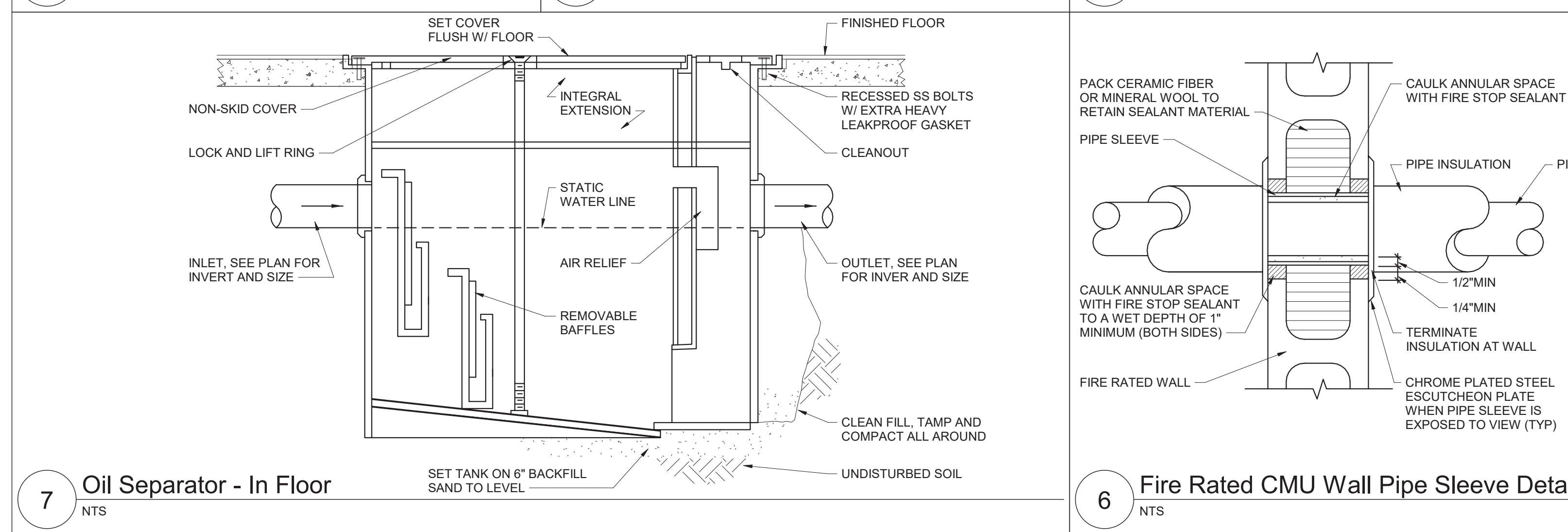
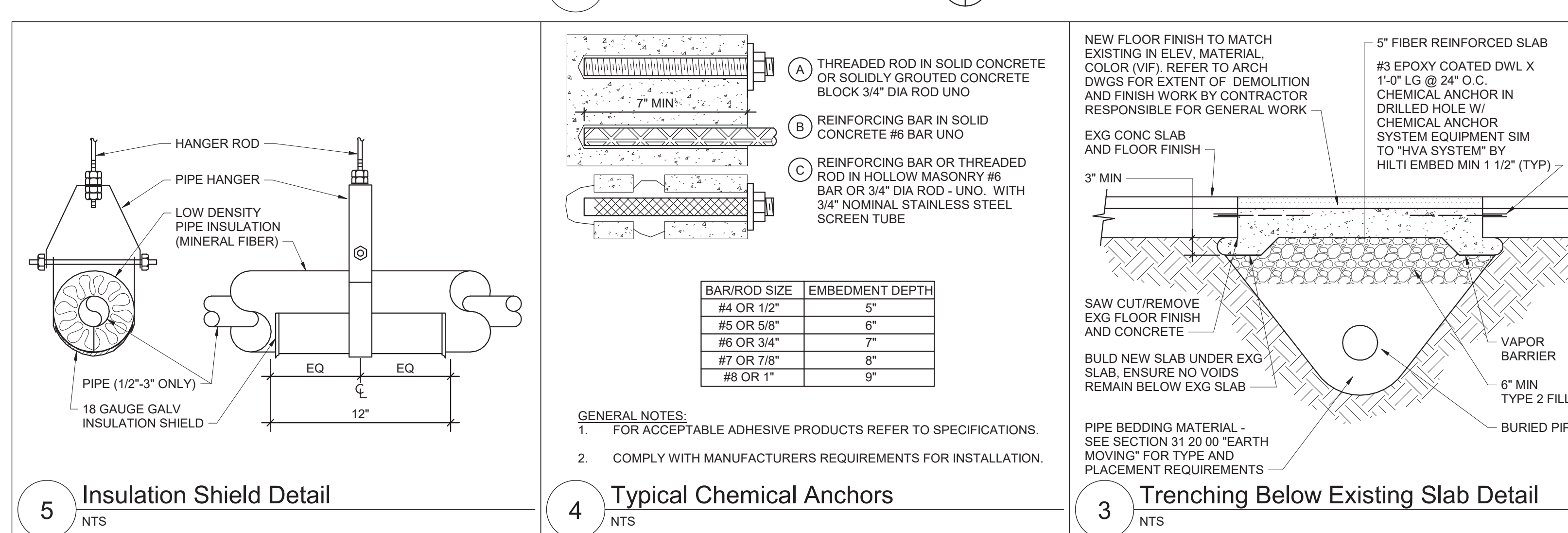
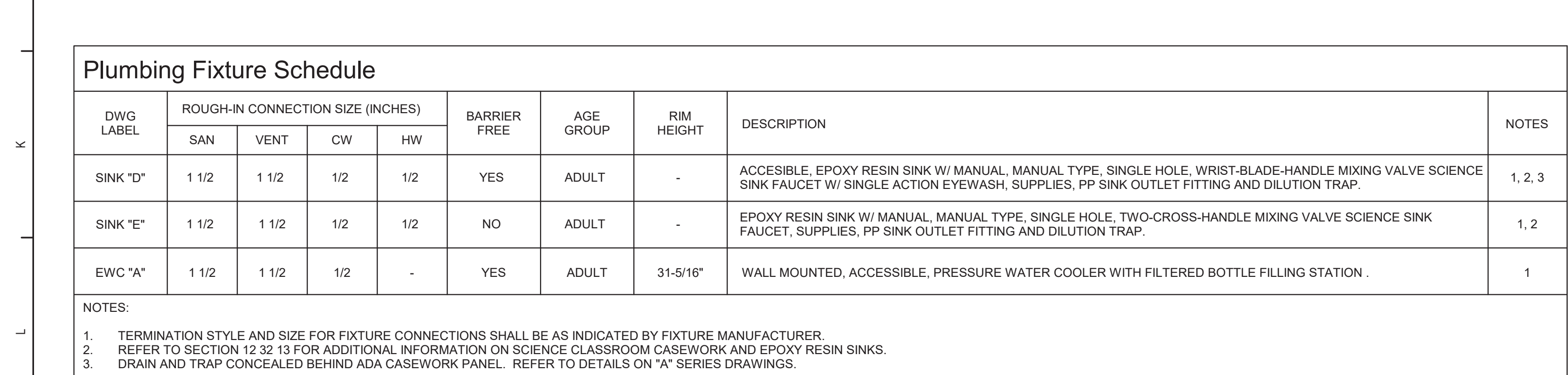
Beacon City School District  
Beacon, New York

Reconstruction to:  
Beacon City High School

Enlarged Science Room Plans and  
Details

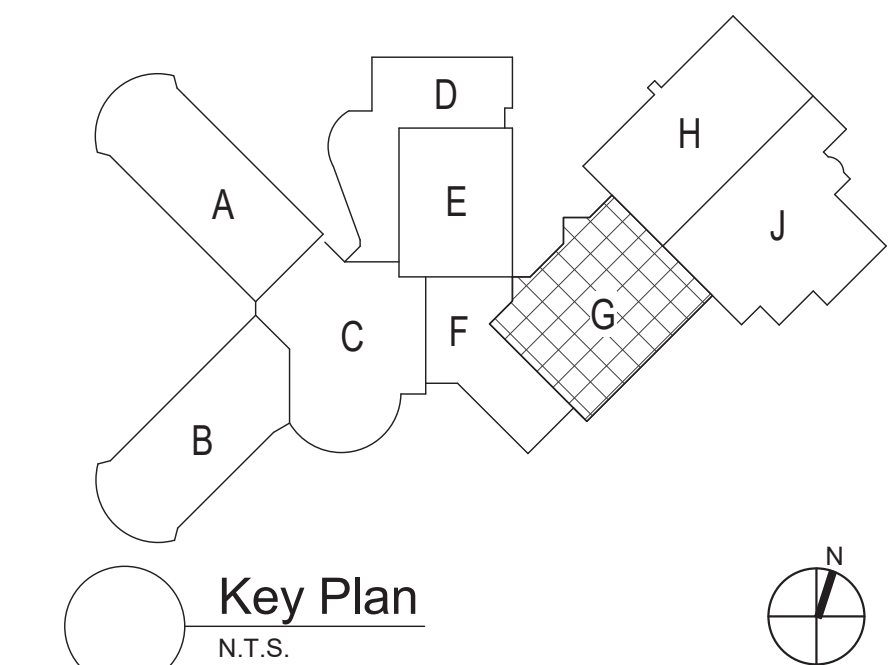
Drawn By: GPD / sef	Date: 10/28/2022	Drawing Number:
Project No.: 279180-22004	FP400	





### Plumbing Notes

1	SEE DETAIL 3/ FP401 AND 4/FP401 FOR ADDITIONAL INFORMATION
2	WORK IS A PART OF ALTERNATE NO. 11.



S.E.D. Control No. 13-02-00-01-0-020-012


Rev. No.:	Date:	Description:
-----------	-------	--------------



<p>complex world   CLEAR SOLUTIONS</p>	<p><b>BID SET</b></p>
<p>Tetra Tech Engineers, Architects &amp; Landscape Architects, P.C.</p>	



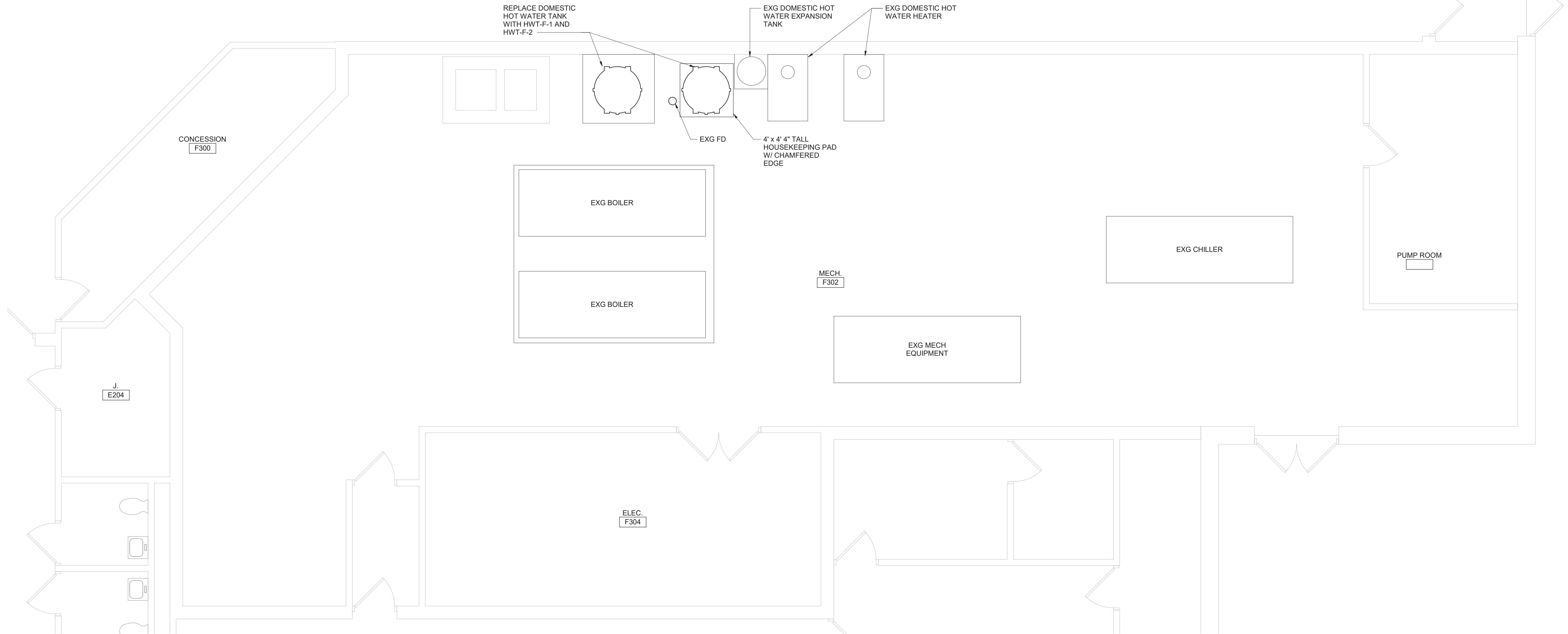
Beacon City School District  
Beacon, New York

Reconstruction to:  
Beacon City High School

## Enlarged Area G Plans, Details and Schedules

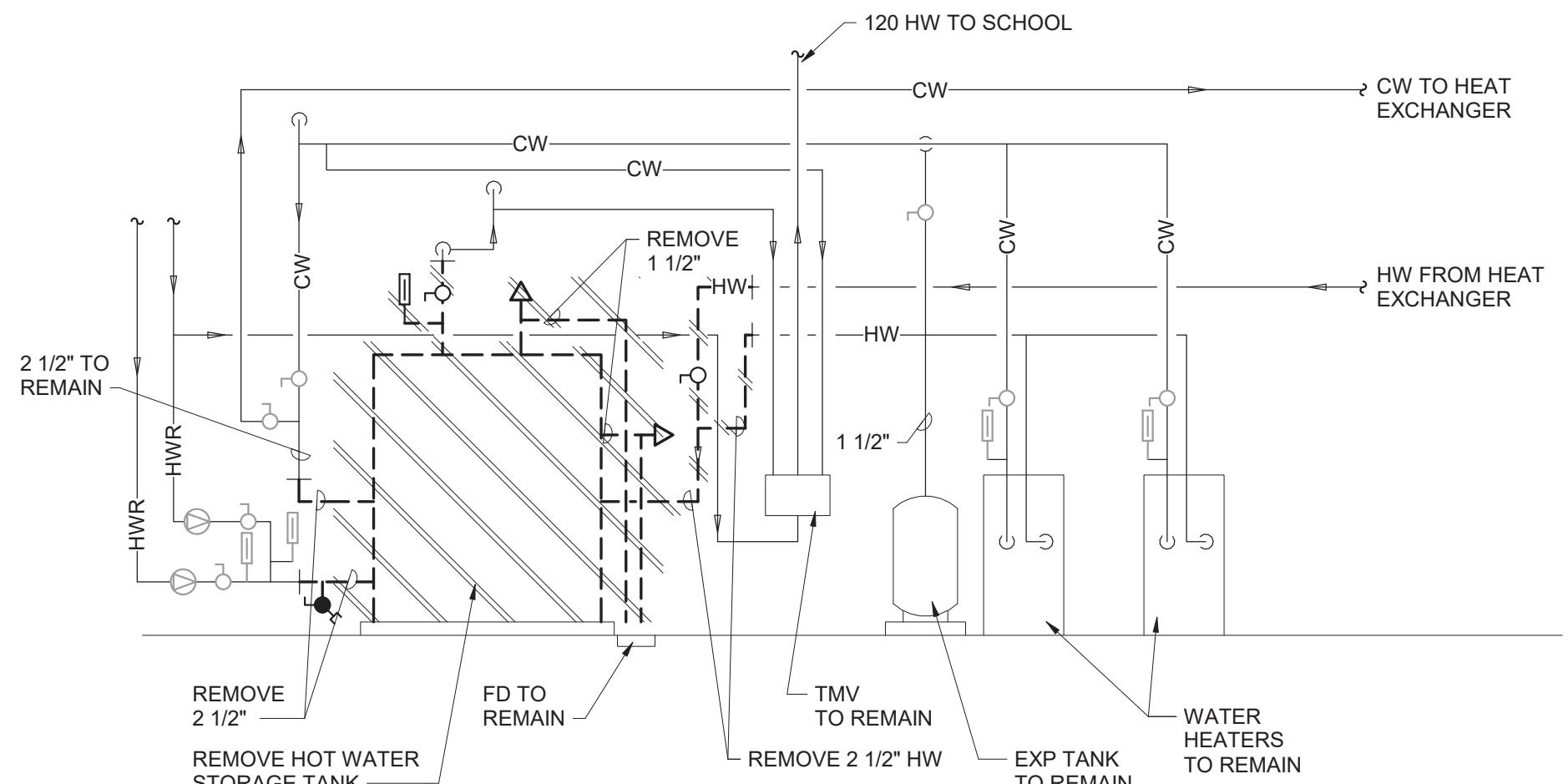
Drawn By: GPD / sef	Date: 10/28/2022	Drawing Number:
Project No.: 279180-22004		FP401

FP401

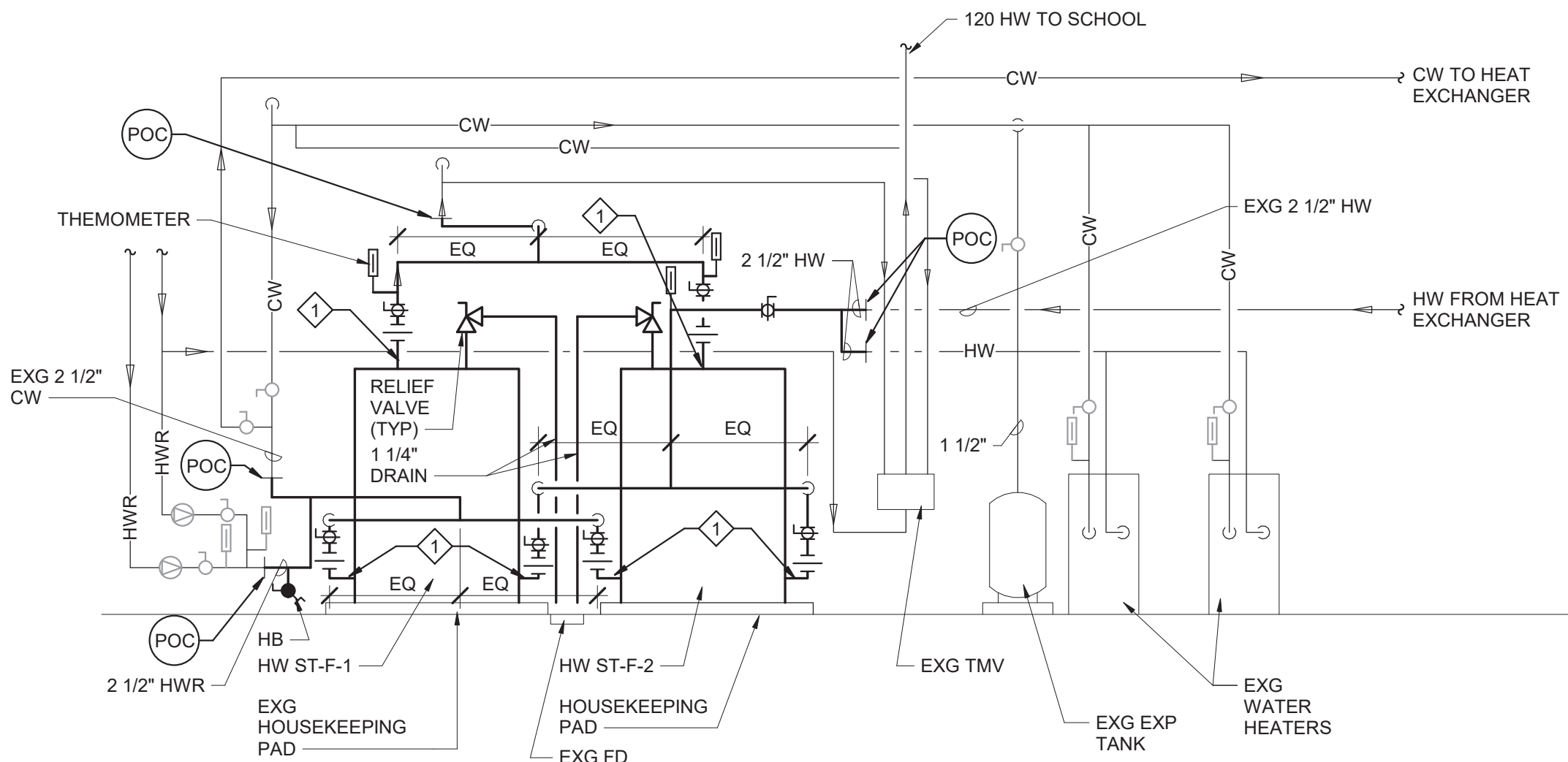


1 Mechanical Room F302 Plan  
1/4" = 1'-0"

Domestic Hot Water Storage Tank Schedule												
DWG LABEL	LOCATION	DESIGN MAKE AND MODEL	STORAGE CAPACITY (GALLONS)	STORAGE TEMPERATURE (F)	WORKING PRESSURE (PSI)	RELIEF VALVE SETTING (PSI)	OUTLET SIZE (NPS)	INLET SIZE (NPS)	DRAIN SIZE (NPS)	JACKET DIAMETER (INCHES)	OVERALL HEIGHT (INCHES)	NOTES
HWT-F-1	MECH RM F302	A.O. SMITH T JV 350A	350	140	160	125	(2) 2 1/2	(4) 2 1/2	1 1/2	46	97	1, 2
HWT-F-2	MECH RM F302	A.O. SMITH T JV 350A	350	140	160	125	(2) 2 1/2	(4) 2 1/2	1 1/2	46	97	1, 2
NOTES:												
1. ASME CODE TANK CONSTRUCTION.												
2. JACKETED INSULATED TANKS MEET R12.5 MINIMUM THERMAL INSULATION REQUIREMENTS OF THE U.S. DEPARTMENT OF ENERGY AND CURRENT EDITION OF ASHRAE/IESNA 90.1 ASME.												



2 Boiler Room Demolition Schematic  
NTS



3 Boiler Room Hot Water Storage Tank Schematic  
NTS

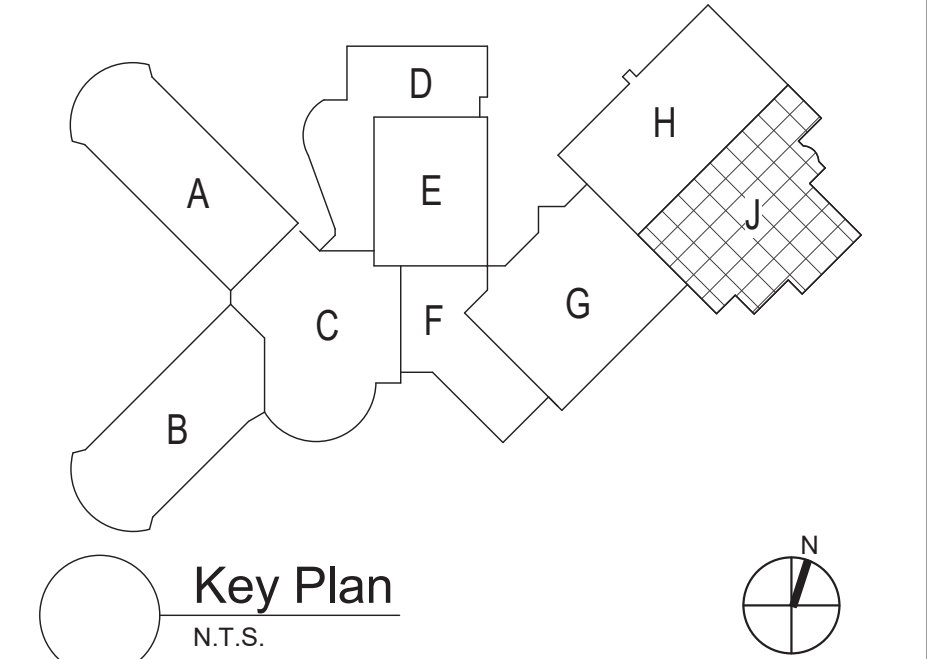
**Plan Notes**

A. REFER TO DRAWING NO. FP050 FOR GENERAL NOTES.

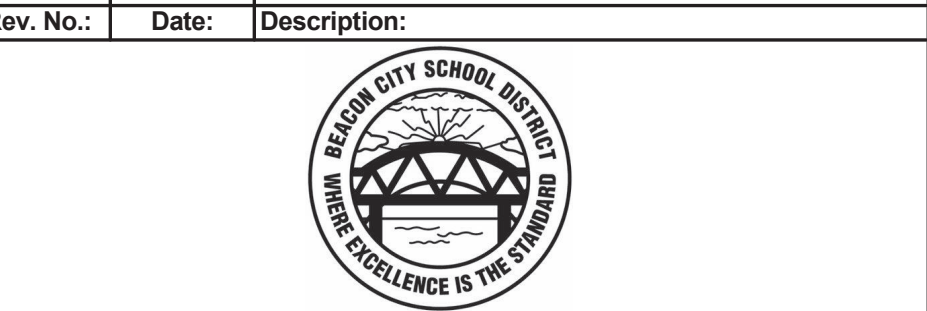
B. REMOVE ABANDONED ACCESSIBLE PIPING TO MAIN BRANCHES. STACKS OR RISERS AS REQUIRED TO ELIMINATE EXPOSED PIPING AND DEAD END PIPING RUNS LONGER THAN 1'-0". COORDINATE CONCEALMENT OF PIPING WITH FINAL CONSTRUCTION OF WALLS, FLOORS AND CEILINGS.

**Plumbing Notes**

◇ 2 1/2" PIPED HEADER WITH A CENTERED TAKEOFF.



S.E.D. Control No. 13-02-00-01-0-020-012



complex world | CLEAR SOLUTIONS

Tetra Tech Engineers, Architects & Landscape Architects, P.C.

**BID SET**



Beacon City School District  
Beacon, New York

Reconstruction to:  
Beacon City High School

Enlarged Mechanical Room F302 Plan

Drawn By: GPD / sef Date: 10/28/2022 Drawing Number: 279180-22004

**FP402**