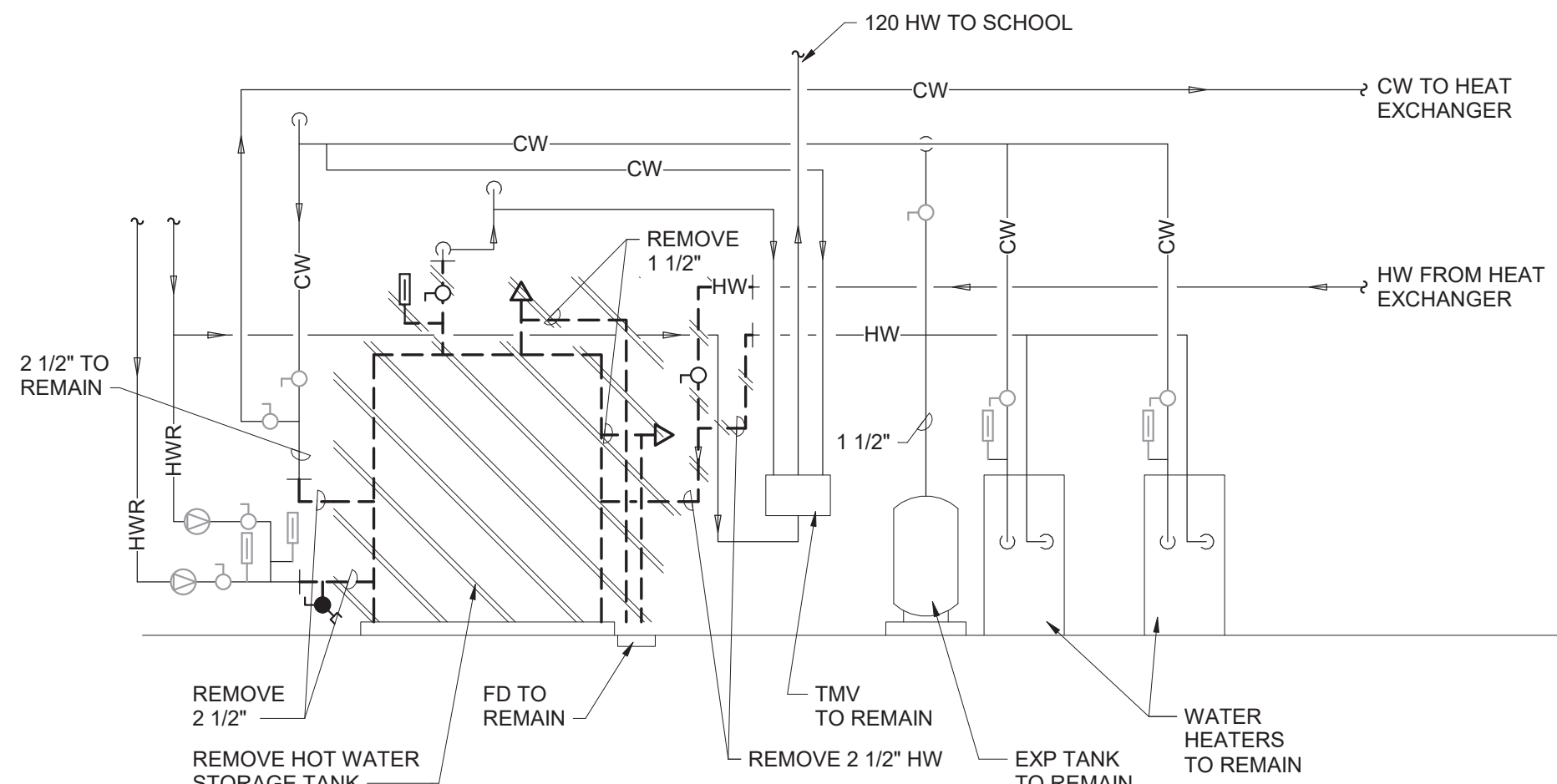
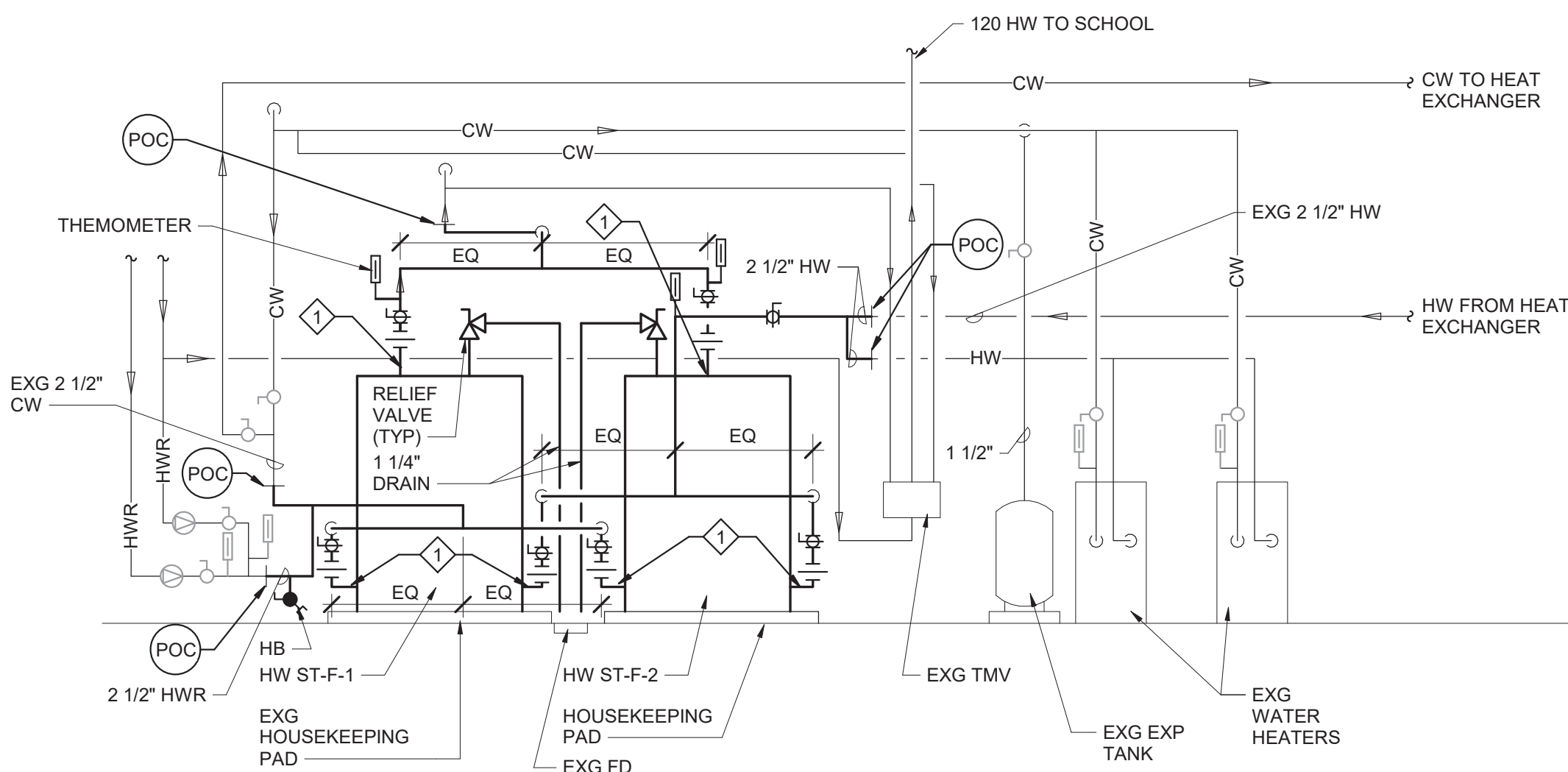


1 Mechanical Room F302 Plan
1/4" = 1'-0"

Domestic Hot Water Storage Tank Schedule												
DWG LABEL	LOCATION	DESIGN MAKE AND MODEL	STORAGE CAPACITY (GALLONS)	STORAGE TEMPERATURE (F)	WORKING PRESSURE (PSI)	RELIEF VALVE SETTING (PSI)	OUTLET SIZE (NPS)	INLET SIZE (NPS)	DRAIN SIZE (NPS)	JACKET DIAMETER (INCHES)	OVERALL HEIGHT (INCHES)	NOTES
HWT-F-1	MECH RM F302	A.O. SMITH T.J.V 350A	350	140	160	125	(2) 2 1/2	(4) 2 1/2	1 1/2	46	97	1, 2
HWT-F-2	MECH RM F302	A.O. SMITH T.J.V 350A	350	140	160	125	(2) 2 1/2	(4) 2 1/2	1 1/2	46	97	1, 2
NOTES:												
1. ASME CODE TANK CONSTRUCTION.												
2. JACKETED INSULATED TANKS MEET R12.5 MINIMUM THERMAL INSULATION REQUIREMENTS OF THE U.S. DEPARTMENT OF ENERGY AND CURRENT EDITION OF ASHRAE/IESNA 90.1 ASME.												



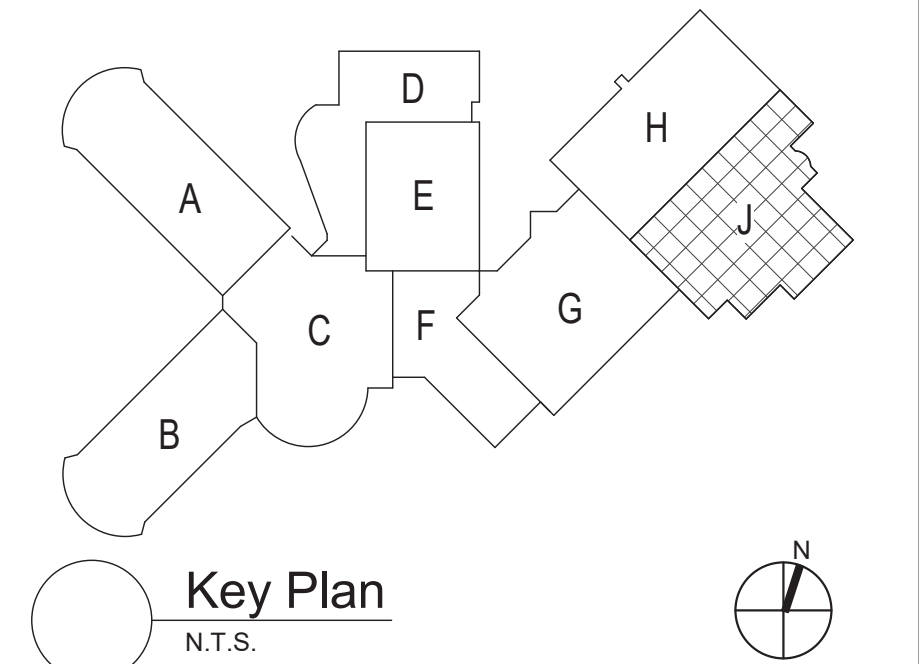
2 Boiler Room Demolition Schematic
NTS



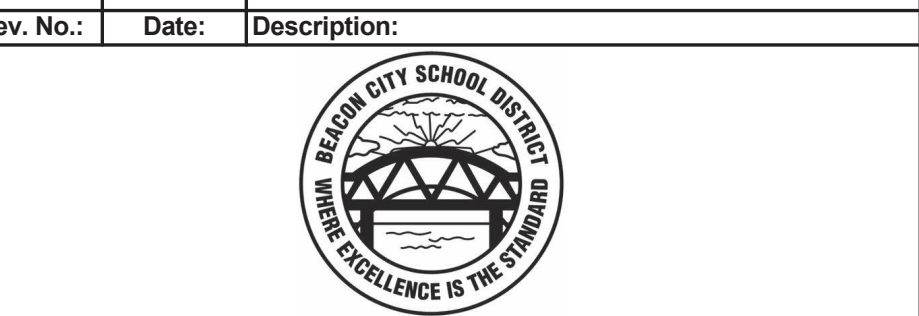
3 Boiler Room Hot Water Storage Tank Schematic
NTS

- Plan Notes**
- A. REFER TO DRAWING NO. FP060 FOR GENERAL NOTES.
- B. REMOVE ABANDONED ACCESSIBLE PIPING TO MAIN BRANCHES. STACKS OR RISERS AS REQUIRED TO ELIMINATE EXPOSED PIPING AND DEAD END PIPING RUNS LONGER THAN 1'-0". COORDINATE CONCEALMENT OF PIPING WITH FINAL CONSTRUCTION OF WALLS, FLOORS AND CEILINGS.

- Plumbing Notes**
- 2 1/2" PIPED HEADER WITH A CENTERED TAKEOFF.



S.E.D. Control No. 13-02-00-01-0-020-012



complex world | CLEAR SOLUTIONS

Tetra Tech Engineers, Architects & Landscape Architects, P.C.



Beacon City School District
Beacon, New York

Reconstruction to:
Beacon City High School

Enlarged Mechanical Room F302 Plan

Drawn By: GPD / sef Date: 10/28/2022 Drawing Number: 279180-22004

FP402