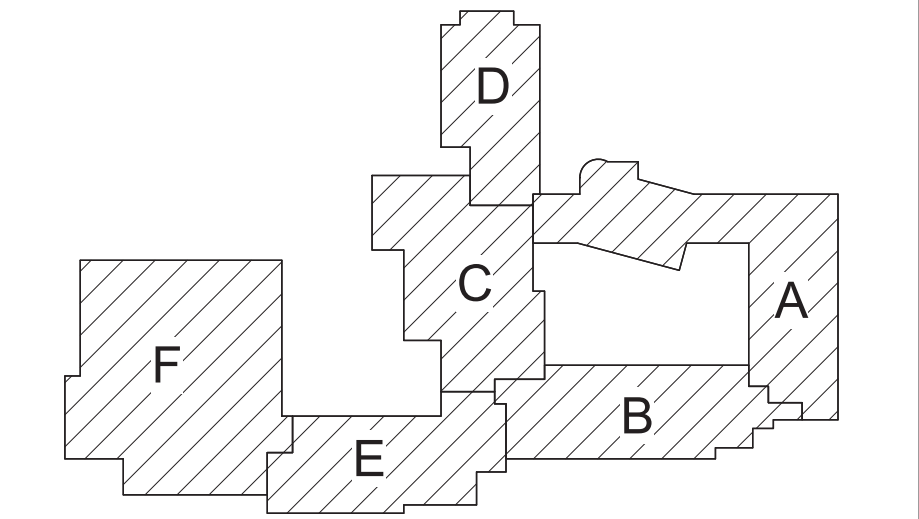




1 First Floor - Key Plan  
1" = 20'-0"

General Notes

- A. VERIFY ALL PIPING LOCATIONS, SIZES, AND ARRANGEMENTS IN FIELD PRIOR TO BID. NOTIFY ARCHITECT IN WRITING OF ANY DISCREPANCIES.
- B. VERIFY IN FIELD INVERT AND DIRECTION OF FLOW IN EXISTING SOIL PIPE WHERE NEW SOIL PIPE IS TO BE CONNECTED TO EXISTING SOIL PIPE.
- C. LEGALLY DISPOSE OF ALL DEMOLITION DEBRIS.
- D. INCLUDE TRENCHING, CUTTING AND PATCHING OF FLOORS, WALLS AND CEILINGS, INCLUDING CEILING TILE REMOVAL AND REPLACEMENT, WHEN REQUIRED FOR PLUMBING WORK. PATCH ABANDONED OPENINGS AND DISTURBED FINISHES TO MATCH EXISTING. TAKE PRECAUTIONS TO PROTECT STRUCTURAL INTEGRITY OF FLOOR OR WALLS WHEN TRENCHING OR CUTTING.
- E. MATERIALS FOR PLUMBING INSTALLATION SHALL BE NEW, UNLESS SPECIFICALLY NOTED OTHERWISE.
- F. REFER TO DRAWING NO. EP402 FOR FIXTURE ROUGH-IN SCHEDULE.
- G. PROVIDE THROUGH PENETRATION FIRESTOPPING FOR FIRE RATED WALLS AND FLOORS. PENETRATIONS THROUGH EXISTING WALLS AND FLOORS ARE CONSIDERED TWO-HOUR PARTITIONS UNLESS SPECIFICALLY NOTED OTHERWISE. REFER TO "A" SERIES OR CODE COMPLIANCE DRAWINGS FOR LOCATION OF FIRE RATED WALLS AND FLOORS.



Key Plan  
N.T.S.

S.E.D. Control No. 13-02-00-01-0-004-023

Rev. No.	Date	Description



complex world | CLEAR SOLUTIONS

Tetra Tech Engineers, Architects & Landscape Architects, P.C.

**BID SET**

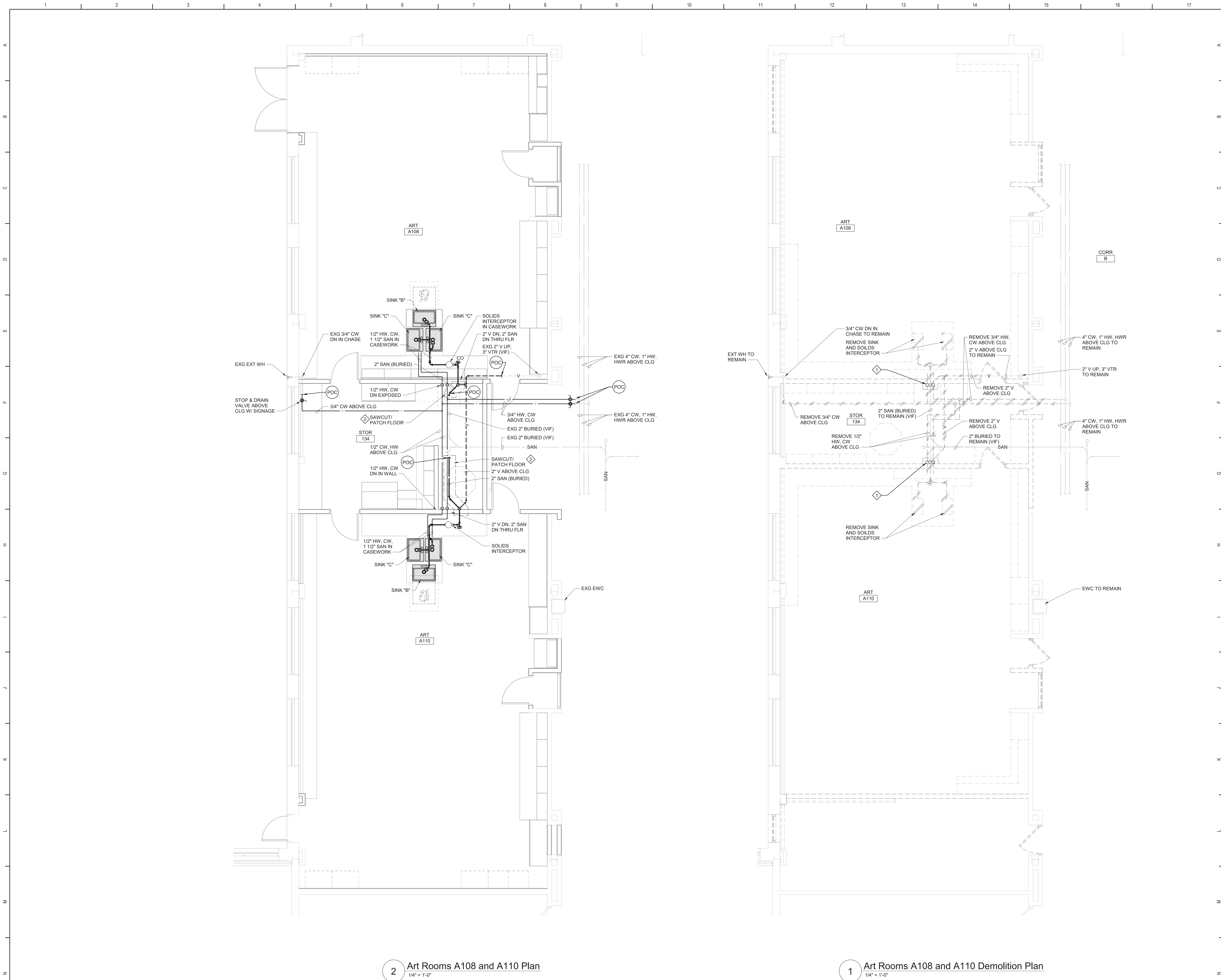


Beacon City School District  
Beacon, New York

Reconstruction to:  
Rombout Middle School

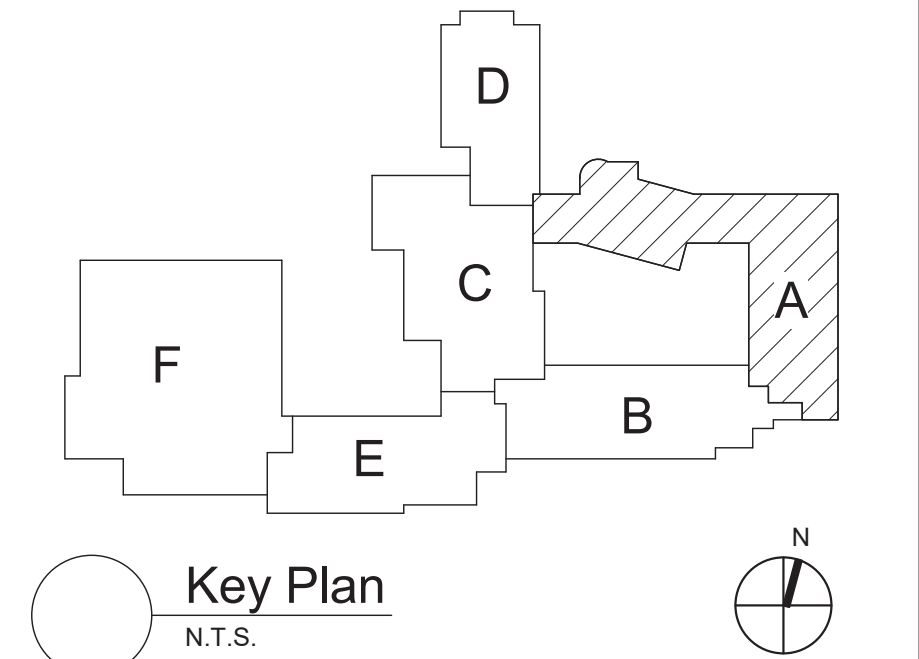
First Floor Key Plan

Drawn By: GPD/ sef	Date: 10/28/2022	Drawing Number:
Project No.: 279180-22004	EP050	



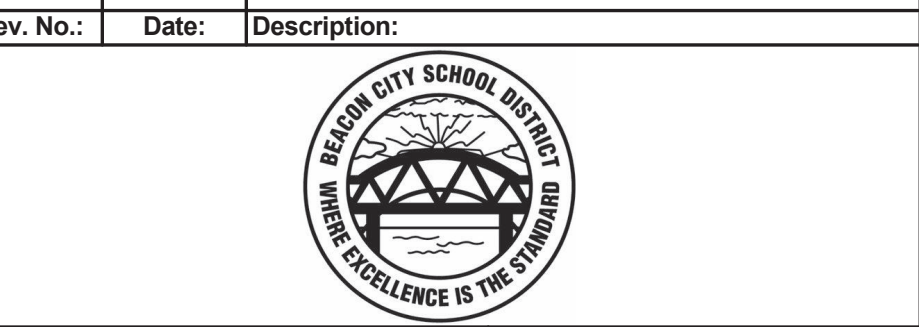
- Plan Notes**
- A. REFER TO DRAWING NO. EP050 FOR GENERAL NOTES.
  - B. REMOVE PLUMBING FIXTURES INDICATED, INCLUDING ASSOCIATED PIPING, FASTENERS, SUPPORTS, ETC., BACK TO POINTS OF CONCEALMENT WITHIN OR BEHIND REMAINING WALLS, BELOW FLOORS OR ABOVE CEILINGS.
  - C. REMOVE ABANDONED ACCESSIBLE PIPING TO MAIN BRANCHES, STACKS OR RISERS AS REQUIRED TO ELIMINATE EXPOSED PIPING AND DEAD END PIPING RUNS LONGER THAN 1'-0". COORDINATE CONCEALMENT OF PIPING WITH FINAL CONSTRUCTION OF WALLS, FLOORS AND CEILINGS.

- Plumbing Notes**
- REMOVE 3/4" HOT WATER, COLD WATER, 1 1/2" VENT AND 2" SANITARY IN CHASE. PREPARE 2" SANITARY BELOW FLOOR FOR FUTURE CONNECTION.
  - REFER TO DETAILS 4/ EP402 AND 5/ EP402 FOR ADDITIONAL INFORMATION.



S.E.D. Control No. 13-02-00-01-0-004-023

Rev. No.:	Date:	Description:



complex world | CLEAR SOLUTIONS

Tetra Tech Engineers, Architects & Landscape Architects, P.C.

**BID SET**



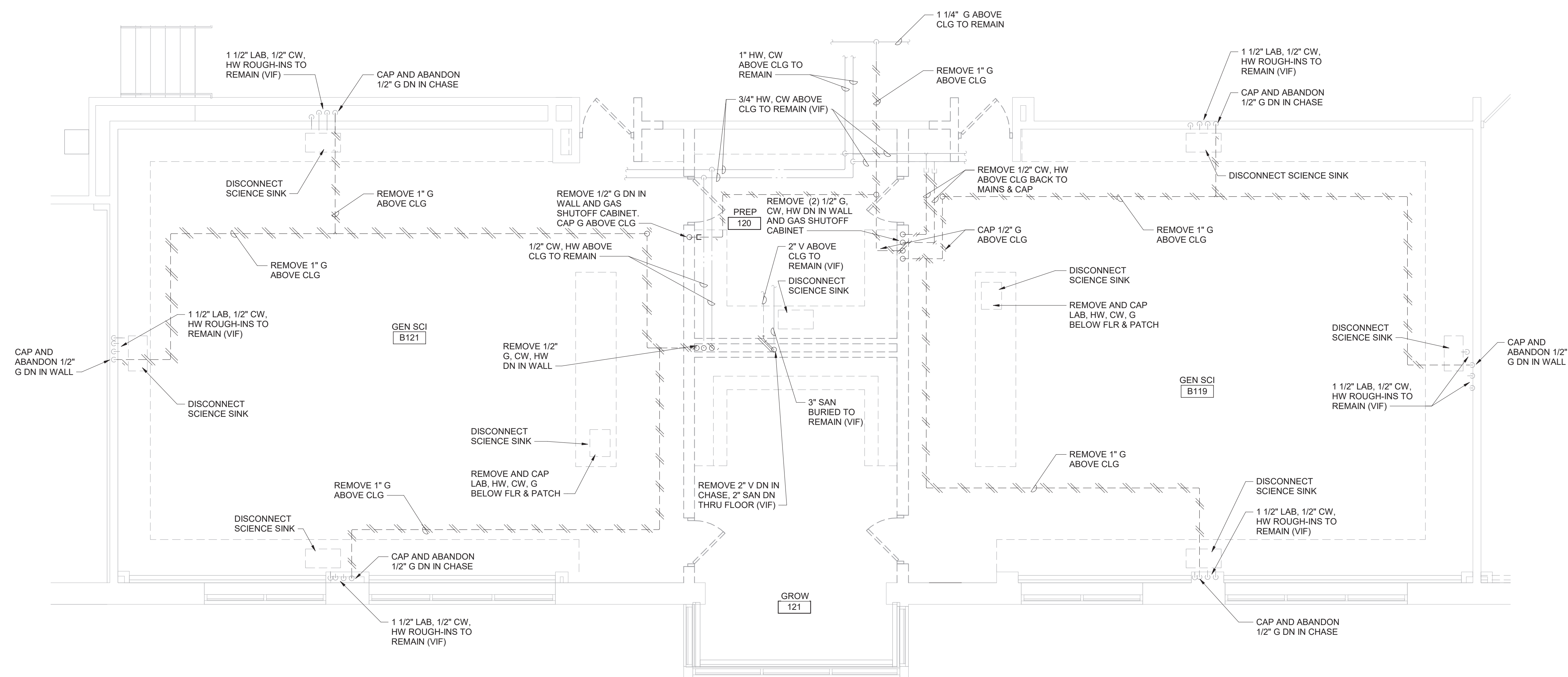
Beacon City School District  
Beacon, New York

Reconstruction to:  
Rombout Middle School

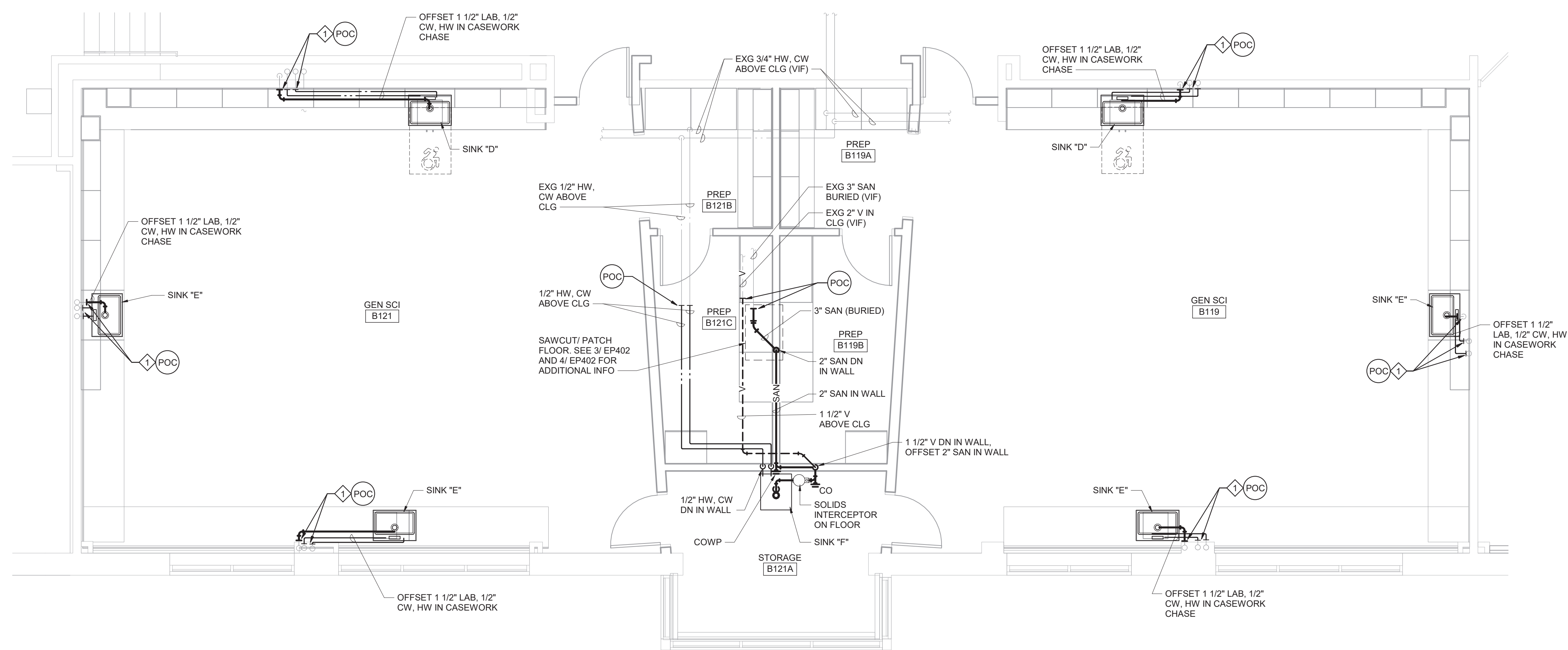
Enlarged Art Room Plans

Drawn By: GPD/ sef	Date: 10/28/2022	Drawing Number:
Project No.: 279180-22004	EP400	





1 Science Rooms B119 and B121 Demolition Plan  
1/4" = 1'-0"



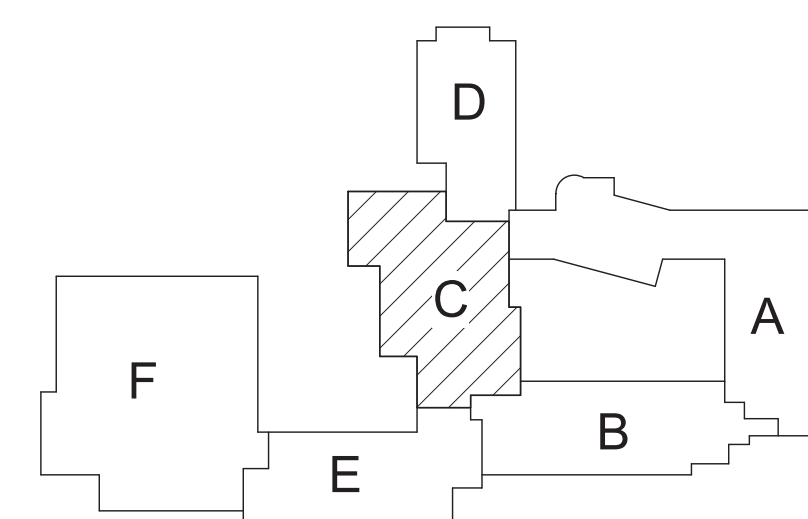
2 Science Rooms B119 and B121 Plan  
1/4" = 1'-0"

#### Plan Notes

- REFER TO DRAWING NO. EP050 FOR GENERAL NOTES.
- DISCONNECT SCIENCE ROOM FIXTURES INDICATED, INCLUDING REMOVING ASSOCIATED PIPING, FASTENERS, SUPPORTS, ETC., BACK TO POINTS OF CONCEALMENT WITHIN OR BEHIND REMAINING WALLS, BELOW FLOORS OR ABOVE CEILINGS.
- REMOVE ABANDONED ACCESSIBLE PIPING TO MAIN BRANCHES, STACKS OR RISERS AS REQUIRED TO ELIMINATE EXPOSED PIPING AND DEAD END PIPING RUNS LONGER THAN 1'-0". COORDINATE CONCEALMENT OF PIPING WITH FINAL CONSTRUCTION OF WALLS, FLOORS AND CEILINGS.

#### Plumbing Notes

- CONNECT 1 1/2" LAB WASTE, 1/2" HOT WATER AND COLD WATER TO EXISTING ROUGH-INS. VERIFY IN FIELD.



Key Plan  
N.T.S.

S.E.D. Control No. 13-02-00-01-0-004-023

Rev. No.: Date: Description:



complex world | CLEAR SOLUTIONS

Tetra Tech Engineers, Architects  
& Landscape Architects, P.C.

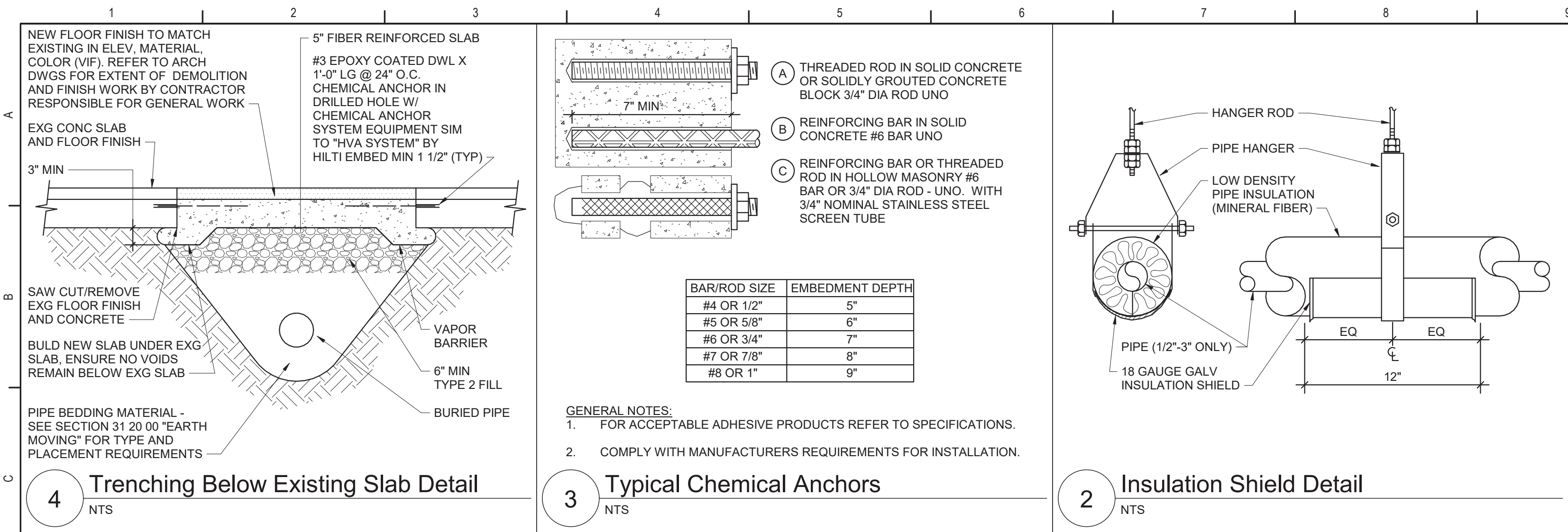


Beacon City School District  
Beacon, New York

Reconstruction to:  
Rombout Middle School

Enlarged Science Room Plans

Drawn By: GPD/ sef Date: 10/28/2022 Drawing Number: 279180-22004 EP401



Grease Interceptor Schedule

DWG LABEL	LOCATION	DESIGN MAKE AND MODEL	GREASE RETENTION CAPACITY (POUNDS)	PDI RATED FLOW RATE (GPM)	INSTALLATION	INLET / OUTLET SIZE (NPS)	CENTERLINE OF INLET / OUTLET TO TOP (INCHES)	CENTERLINE OF INLET / OUTLET TO BOTTOM (INCHES)	EXTENSION HEIGHT (INCHES)	LENGTH (INCHES)	WIDTH (INCHES)	HEIGHT (INCHES)	VENT SIZE (NPS)	NOTES
GI-E-1	KITCHEN C125	JR SMITH 8150	100	50	FLOOR MOUNTED	3	10	6	N/A	49-1/2	27-3/4	16	2	1

NOTES:

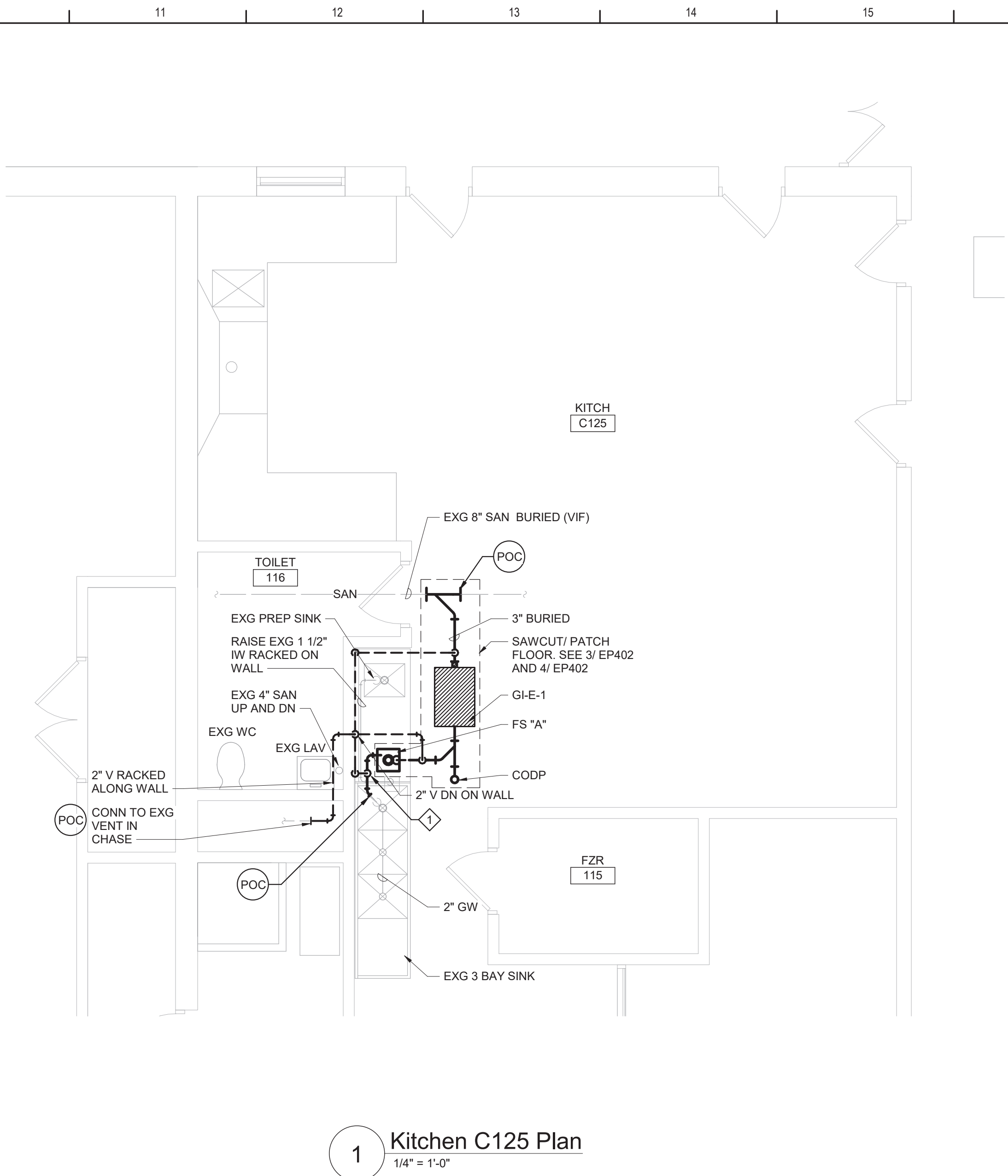
1. PROVIDE EXTERNAL FLOW CONTROL FITTING SUPPLIED BY SAME MANUFACTURER AS GREASE INTERCEPTOR.

Plumbing Fixture Schedule

DWG LABEL	ROUGH-IN CONNECTION SIZE (INCHES)				BARRIER FREE	AGE GROUP	RIM HEIGHT	DESCRIPTION	NOTES
	SAN	VENT	CW	HW					
SINK "B"	1 1/2	1 1/2	1/2	1/2	YES	ADULT	-	ACCESSIBLE, LARGE, STAINLESS STEEL, COUNTER MOUNTED SINK W/ MANUAL, SINGLE CONTROL MIXING FAUCET W/ SWING SPOUT, SUPPLIES, OFFSET DRAIN FITTING AND TRAP.	
SINK "C"	1 1/2	1 1/2	1/2	1/2	NO	ADULT	-	LARGE, DEEP BOWL, STAINLESS STEEL, COUNTER MOUNTED SINK W/ MANUAL, SINGLE CONTROL MIXING FAUCET W/ SWING SPOUT, SUPPLIES, DRAIN FITTING, TRAP AND SOLIDS INTERCEPTOR.	1
SINK "D"	1 1/2	1 1/2	1/2	1/2	YES	ADULT	-	ACCESSIBLE, EPOXY RESIN SINK W/ MANUAL, MANUAL TYPE, SINGLE HOLE, WRIST-BLADE-HANDLE MIXING VALVE SCIENCE SINK FAUCET W/ SINGLE ACTION EYEWASH, SUPPLIES, PP SINK OUTLET FITTING AND CORROSION RESISTANT TRAP.	
SINK "E"	1 1/2	1 1/2	1/2	1/2	NO	ADULT	-	EPOXY RESIN SINK W/ MANUAL, MANUAL TYPE, SINGLE HOLE, TWO-CROSS-HANDLE MIXING VALVE SCIENCE SINK FAUCET, SUPPLIES, PP SINK OUTLET FITTING AND CORROSION RESISTANT TRAP.	
SINK "F"	1 1/2	1 1/2	1/2	1/2	NO	-	-	FLOOR MOUNTED, MOLDED LAUNDRY TUB WITH MANUAL TYPE, DECK MOUNT MIXING FAUCET WITH LEVER HANDLES AND SWING SPOUT, SUPPLIES, DRAIN FITTING WITH STOPPER AND TRAP AND SOLIDS INTERCEPTOR.	1

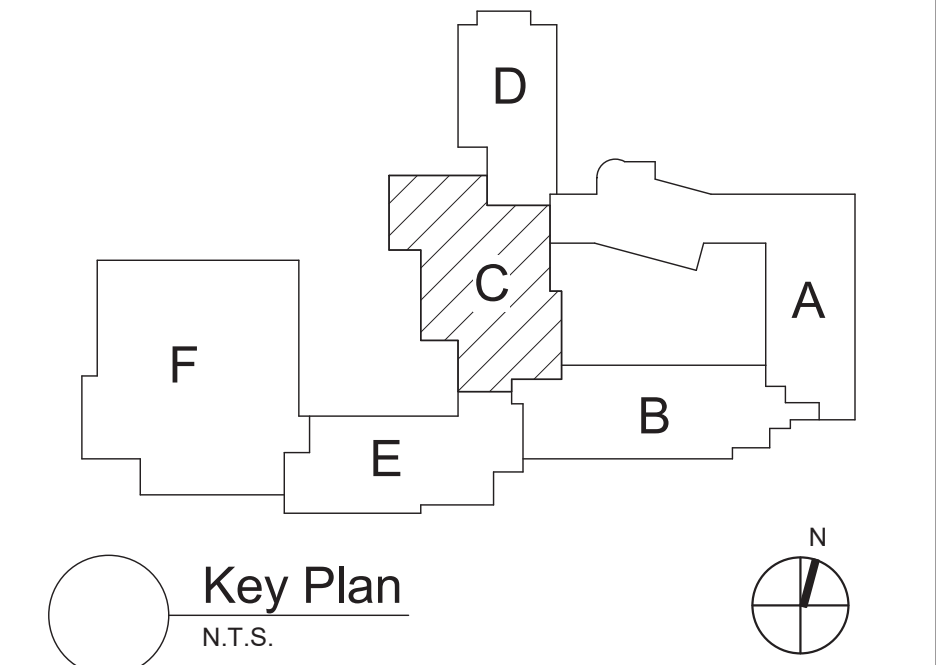
NOTES:

1. SEE SECTION 22 13 23 FOR SOLIDS INTERCEPTOR.



- Plan Notes
- A. REFER TO DRAWING NO. EP050 FOR GENERAL NOTES.
- B. REMOVE PLUMBING FIXTURES INDICATED, INCLUDING ASSOCIATED PIPING, FASTENERS, SUPPORTS, ETC., BACK TO POINTS OF CONCEALMENT WITHIN OR BEHIND REMAINING WALLS, BELOW FLOORS OR ABOVE CEILINGS.
- C. REMOVE ABANDONED ACCESSIBLE PIPING TO MAIN BRANCHES, STACKS OR RISERS AS REQUIRED TO ELIMINATE EXPOSED PIPING AND DEAD END PIPING RUNS LONGER THAN 1'-0". COORDINATE CONCEALMENT OF PIPING WITH FINAL CONSTRUCTION OF WALLS, FLOORS AND CEILINGS.

- Plumbing Notes
- ◇ FLOW CONTROL FITTING SUPPLIED BY GREASE INTERCEPTOR MANUFACTURER.



S.E.D. Control No. 13-02-00-01-0-004-023


Rev. No.: Date: Description:



complex world | CLEAR SOLUTIONS

Tetra Tech Engineers, Architects & Landscape Architects, P.C.

BID SET



Beacon City School District  
Beacon, New York

Reconstruction to:  
Rombout Middle School

Enlarged Kitchen Plans, Schedule and  
Details

Drawn By: GPD/ sef	Date: 10/28/2022	Drawing Number:
Project No.: 279180-22004		EP402