

Grease Interceptor Schedule

DWG LABEL	LOCATION	DESIGN MAKE AND MODEL	GREASE RETENTION CAPACITY (POUNDS)	PDI RATED FLOW RATE (GPM)	INSTALLATION	INLET / OUTLET SIZE (NPS)	CENTERLINE OF INLET / OUTLET TO TOP (INCHES)	CENTERLINE OF INLET / OUTLET TO BOTTOM (INCHES)	EXTENSION HEIGHT (INCHES)	LENGTH (INCHES)	WIDTH (INCHES)	HEIGHT (INCHES)	VENT SIZE (NPS)	NOTES
GI-E-1	KITCHEN C125	JR SMITH 8150	100	50	FLOOR MOUNTED	3	10	6	N/A	49-1/2	27-3/4	16	2	1

NOTES:

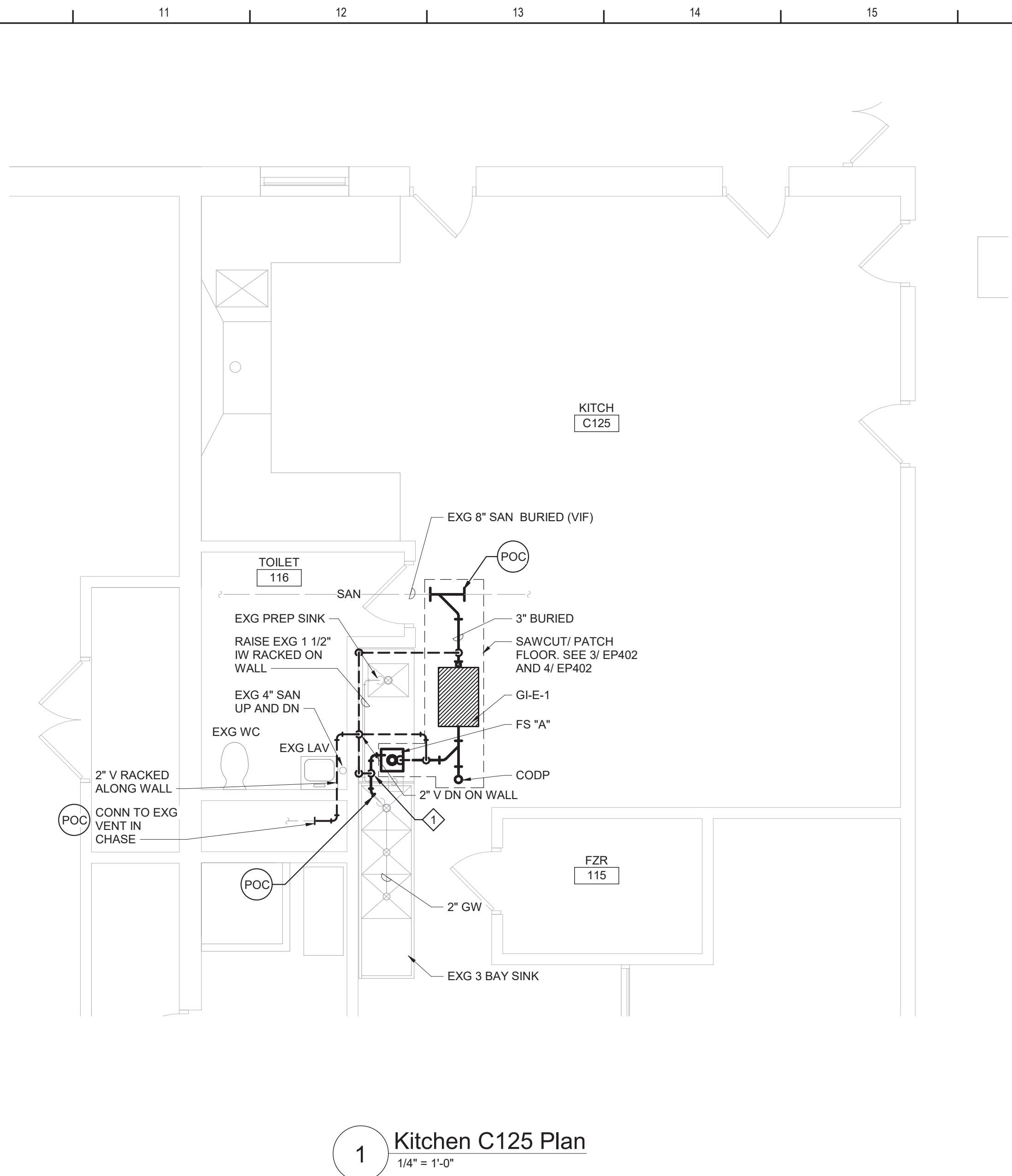
1. PROVIDE EXTERNAL FLOW CONTROL FITTING SUPPLIED BY SAME MANUFACTURER AS GREASE INTERCEPTOR.

Plumbing Fixture Schedule

DWG LABEL	ROUGH-IN CONNECTION SIZE (INCHES)				BARRIER FREE	AGE GROUP	RIM HEIGHT	DESCRIPTION	NOTES
	SAN	VENT	CW	HW					
SINK "B"	1 1/2	1 1/2	1/2	1/2	YES	ADULT	-	ACCESSIBLE, LARGE, STAINLESS STEEL, COUNTER MOUNTED SINK W/ MANUAL, SINGLE CONTROL MIXING FAUCET W/ SWING SPOUT, SUPPLIES, OFFSET DRAIN FITTING AND TRAP.	
SINK "C"	1 1/2	1 1/2	1/2	1/2	NO	ADULT	-	LARGE, DEEP BOWL, STAINLESS STEEL, COUNTER MOUNTED SINK W/ MANUAL, SINGLE CONTROL MIXING FAUCET W/ SWING SPOUT, SUPPLIES, DRAIN FITTING, TRAP AND SOLIDS INTERCEPTOR.	1
SINK "D"	1 1/2	1 1/2	1/2	1/2	YES	ADULT	-	ACCESSIBLE, EPOXY RESIN SINK W/ MANUAL, MANUAL TYPE, SINGLE HOLE, WRIST-BLADE-HANDLE MIXING VALVE SCIENCE SINK FAUCET W/ SINGLE ACTION EYEWASH, SUPPLIES, PP SINK OUTLET FITTING AND CORROSION RESISTANT TRAP.	
SINK "E"	1 1/2	1 1/2	1/2	1/2	NO	ADULT	-	EPOXY RESIN SINK W/ MANUAL, MANUAL TYPE, SINGLE HOLE, TWO-CROSS-HANDLE MIXING VALVE SCIENCE SINK FAUCET, SUPPLIES, PP SINK OUTLET FITTING AND CORROSION RESISTANT TRAP.	
SINK "F"	1 1/2	1 1/2	1/2	1/2	NO	-	-	FLOOR MOUNTED, MOLDED LAUNDRY TUB WITH MANUAL TYPE, DECK MOUNT MIXING FAUCET WITH LEVER HANDLES AND SWING SPOUT, SUPPLIES, DRAIN FITTING WITH STOPPER AND TRAP AND SOLIDS INTERCEPTOR.	1

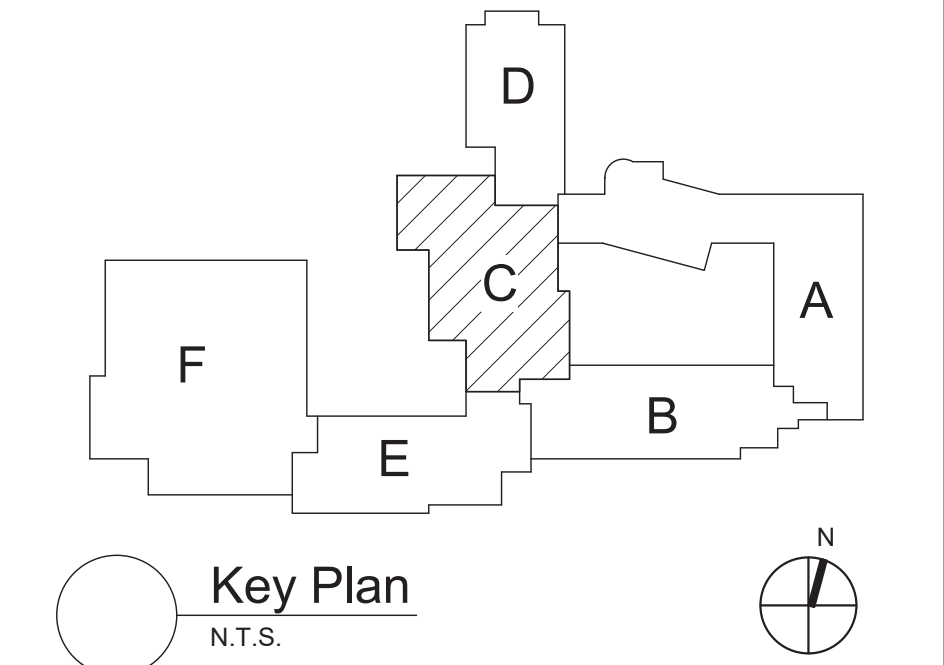
NOTES:

1. SEE SECTION 22 13 23 FOR SOLIDS INTERCEPTOR.



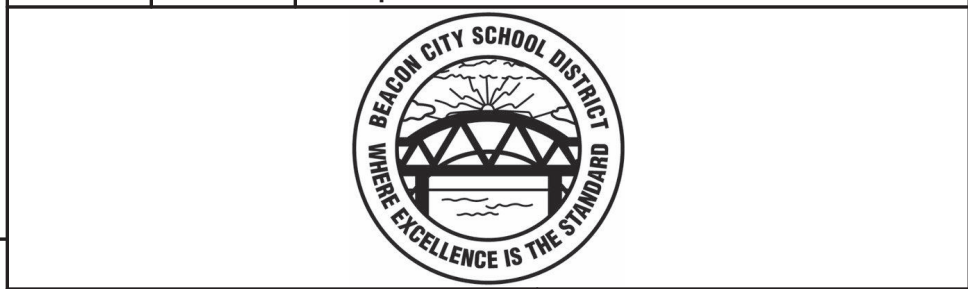
- Plan Notes
- A. REFER TO DRAWING NO. EP050 FOR GENERAL NOTES.
- B. REMOVE PLUMBING FIXTURES INDICATED, INCLUDING ASSOCIATED PIPING, FASTENERS, SUPPORTS, ETC., BACK TO POINTS OF CONCEALMENT WITHIN OR BEHIND REMAINING WALLS, BELOW FLOORS OR ABOVE CEILINGS.
- C. REMOVE ABANDONED ACCESSIBLE PIPING TO MAIN BRANCHES, STACKS OR RISERS AS REQUIRED TO ELIMINATE EXPOSED PIPING AND DEAD END PIPING RUNS LONGER THAN 1'-0". COORDINATE CONCEALMENT OF PIPING WITH FINAL CONSTRUCTION OF WALLS, FLOORS AND CEILINGS.

- Plumbing Notes
- ◇ FLOW CONTROL FITTING SUPPLIED BY GREASE INTERCEPTOR MANUFACTURER.



S.E.D. Control No. 13-02-00-01-0-004-023

Rev. No.:	Date:	Description:



complex world | CLEAR SOLUTIONS

Tetra Tech Engineers, Architects & Landscape Architects, P.C.

BID SET



Beacon City School District
Beacon, New York

Reconstruction to:
Rombout Middle School

Enlarged Kitchen Plans, Schedule and
Details

Drawn By: GPD/ sef	Date: 10/28/2022	Drawing Number:
Project No.: 279180-22004		EP402