

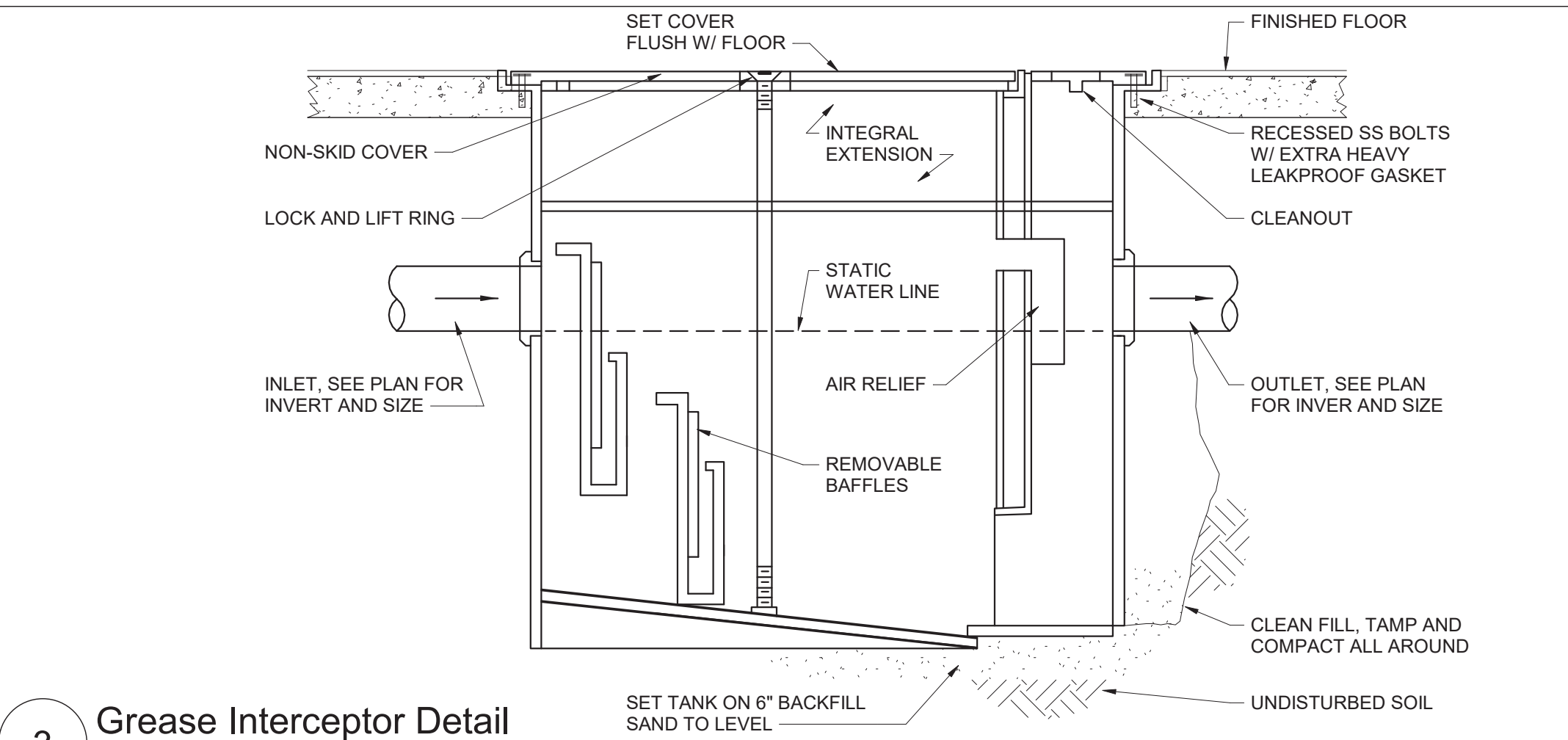
1 Basement Floor Plan - Area A  
1/8" = 1'-0"

Grease Interceptor Schedule

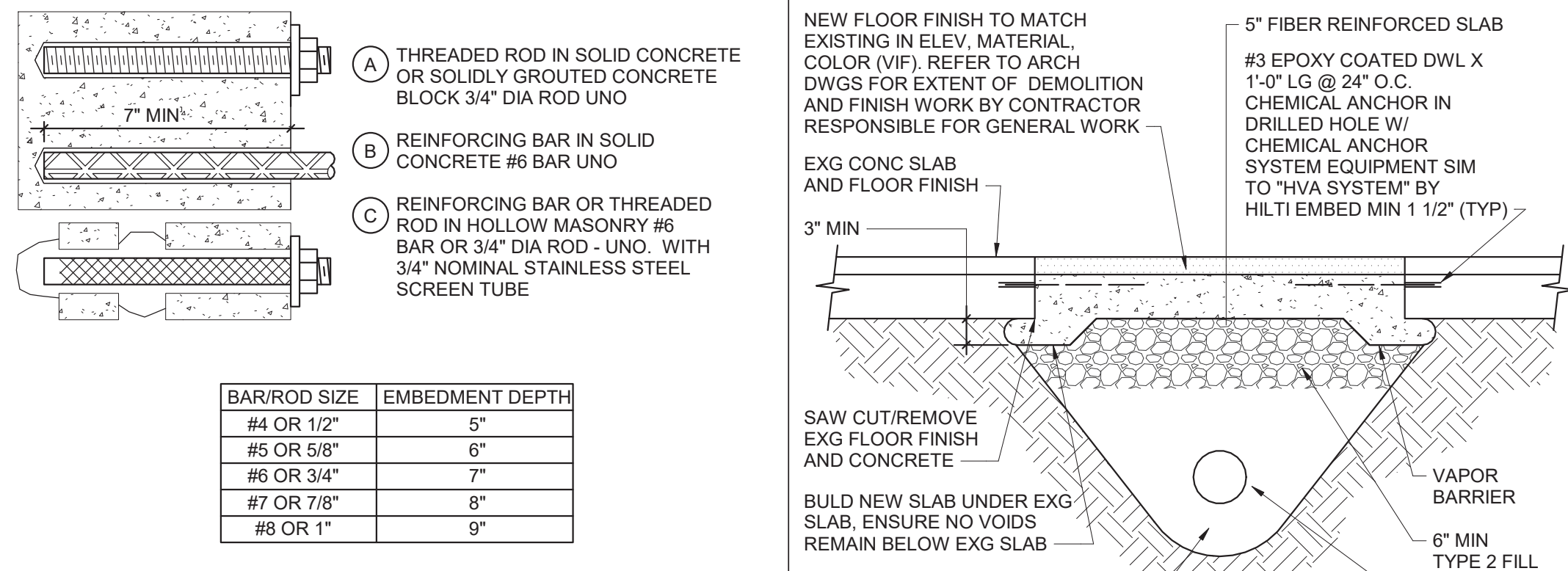
DWG LABEL	LOCATION	DESIGN MAKE AND MODEL	GREASE RETENTION CAPACITY (POUNDS)	PDI RATED FLOW RATE (GPM)	INSTALLATION	INLET / OUTLET SIZE (NPS)	CENTERLINE OF INLET / OUTLET TO BOTTOM (INCHES)	CENTERLINE OF INLET / OUTLET TO TOP (INCHES)	EXTENSION HEIGHT (INCHES)	LENGTH (INCHES)	WIDTH (INCHES)	HEIGHT (INCHES)	VENT SIZE (NPS)	NOTES
GI-C-1	KITCHEN E03	JR SMITH 8050	100	50	BURIED	3	17-1/2	6-3/4	FIELD VERIFY	35-1/2	20-3/4	24-1/4	2	1, 2

NOTES:

- PROVIDE EXTERNAL FLOW CONTROL FITTING SUPPLIED BY SAME MANUFACTURER AS GREASE INTERCEPTOR.
- SET UNIT COVER/EXTENSION FLUSH WITH FINISHED FLOOR.



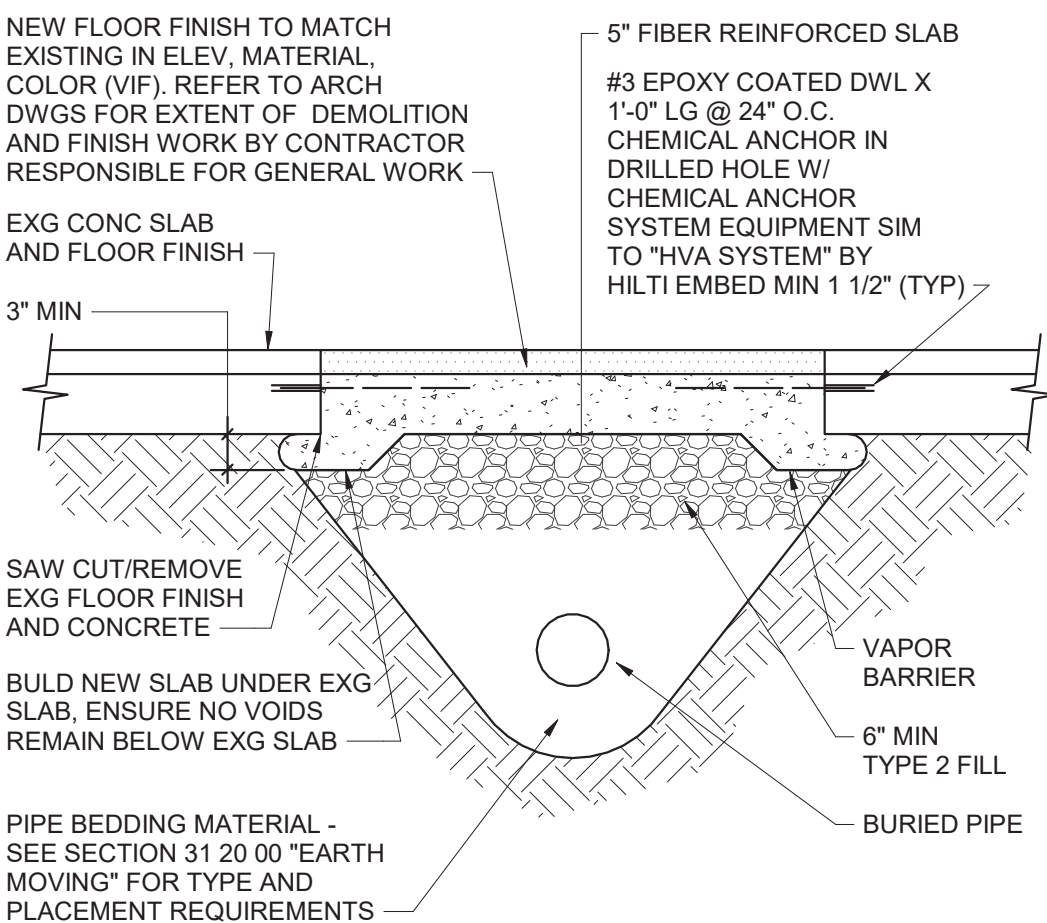
3 Grease Interceptor Detail  
NTS



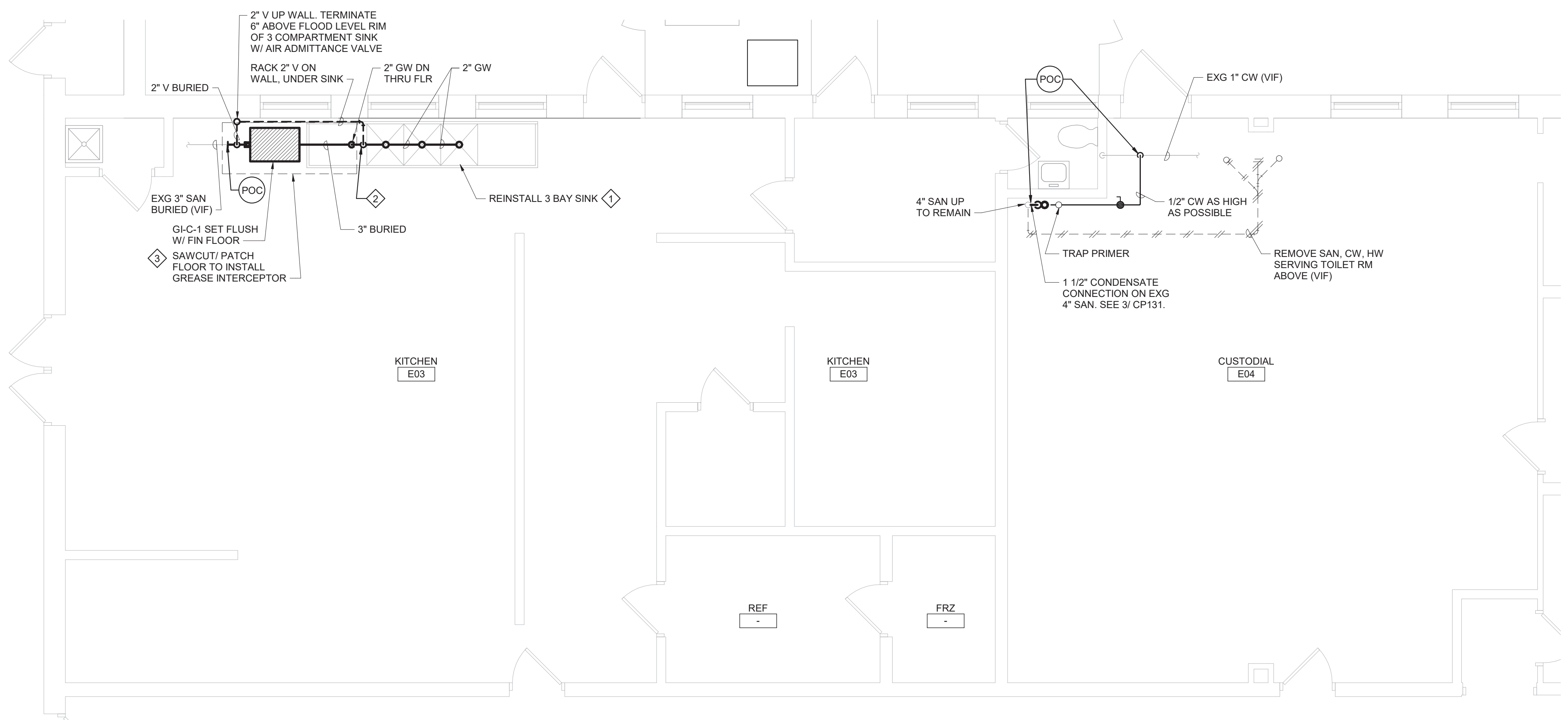
GENERAL NOTES:

- FOR ACCEPTABLE ADHESIVE PRODUCTS REFER TO SPECIFICATIONS.
- COMPLY WITH MANUFACTURERS REQUIREMENTS FOR INSTALLATION.

5 Typical Chemical Anchors  
NTS



4 Trenching Below Existing Slab Detail  
NTS



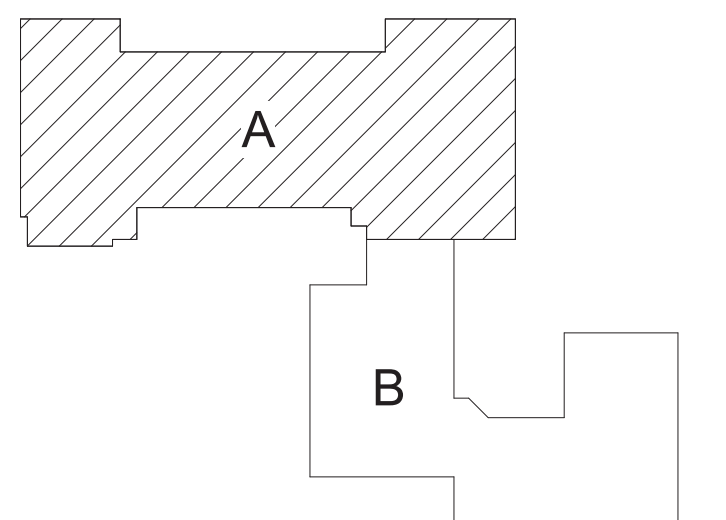
2 Kitchen E03 Plan  
1/4" = 1'-0"

General Notes

- VERIFY ALL PIPING LOCATIONS, SIZES, AND ARRANGEMENTS IN FIELD PRIOR TO BID. NOTIFY ARCHITECT IN WRITING OF ANY DISCREPANCIES.
- VERIFY IN FIELD INVERT AND DIRECTION OF FLOW IN EXISTING SOIL PIPE WHERE NEW SOIL PIPE IS TO BE CONNECTED TO EXISTING SOIL PIPE.
- LEGALLY DISPOSE OF ALL DEMOLITION DEBRIS.
- INCLUDE TRENCHING, CUTTING AND PATCHING OF FLOORS, WALLS AND CEILINGS, INCLUDING CEILING TILE REMOVAL AND REPLACEMENT, WHEN REQUIRED FOR PLUMBING WORK. PATCH ABANDONED OPENINGS AND DISTURBED FINISHES TO MATCH EXISTING. TAKE PRECAUTIONS TO PROTECT STRUCTURAL INTEGRITY OF FLOOR OR WALLS WHEN TRENCHING OR CUTTING.
- MATERIALS FOR PLUMBING INSTALLATION SHALL BE NEW, UNLESS SPECIFICALLY NOTED OTHERWISE.
- REPLACE PLUMBING EQUIPMENT INDICATED. MODIFY AND EXTEND EXISTING PIPING AS REQUIRED TO MEET FIXTURE MFR'S ROUGH-IN RECOMMENDATIONS AND TO MAKE CONNECTIONS. CONCEAL PIPING WITHIN OR BEHIND WALLS, BELOW FLOORS OR ABOVE CEILINGS. PATCH DISTURBED FINISHES TO MATCH EXISTING UNLESS SPECIFICALLY NOTED OTHERWISE.

Plumbing Notes

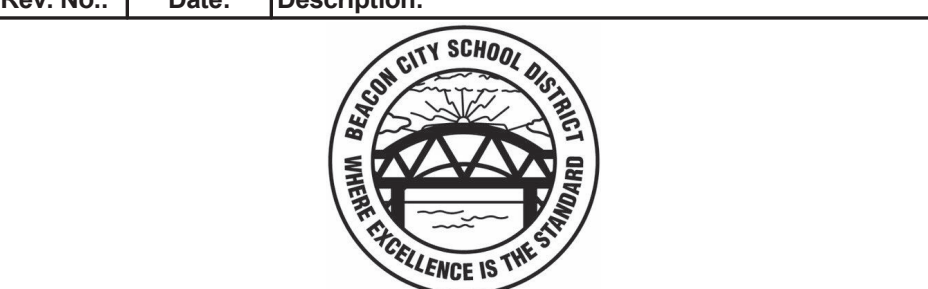
- REMOVE 3 BAY SINK AND STORE FOR REINSTALLATION AFTER GREASE INTERCEPTOR IS REPLACED. CLEAN TABLE BEFORE REINSTALLATION.
- FLOW CONTROL FITTING SUPPLIED BY GREASE INTERCEPTOR MANUFACTURER.
- REFER TO DETAILS 4/CP130 AND 5/ CP130 FOR ADDITIONAL INFORMATION.



Key Plan  
N.T.S.

S.E.D. Control No. 13-02-00-01-0-008-020

Rev. No.	Date	Description



complex world | CLEAR SOLUTIONS

Tetra Tech Engineers, Architects & Landscape Architects, P.C.

**BID SET**

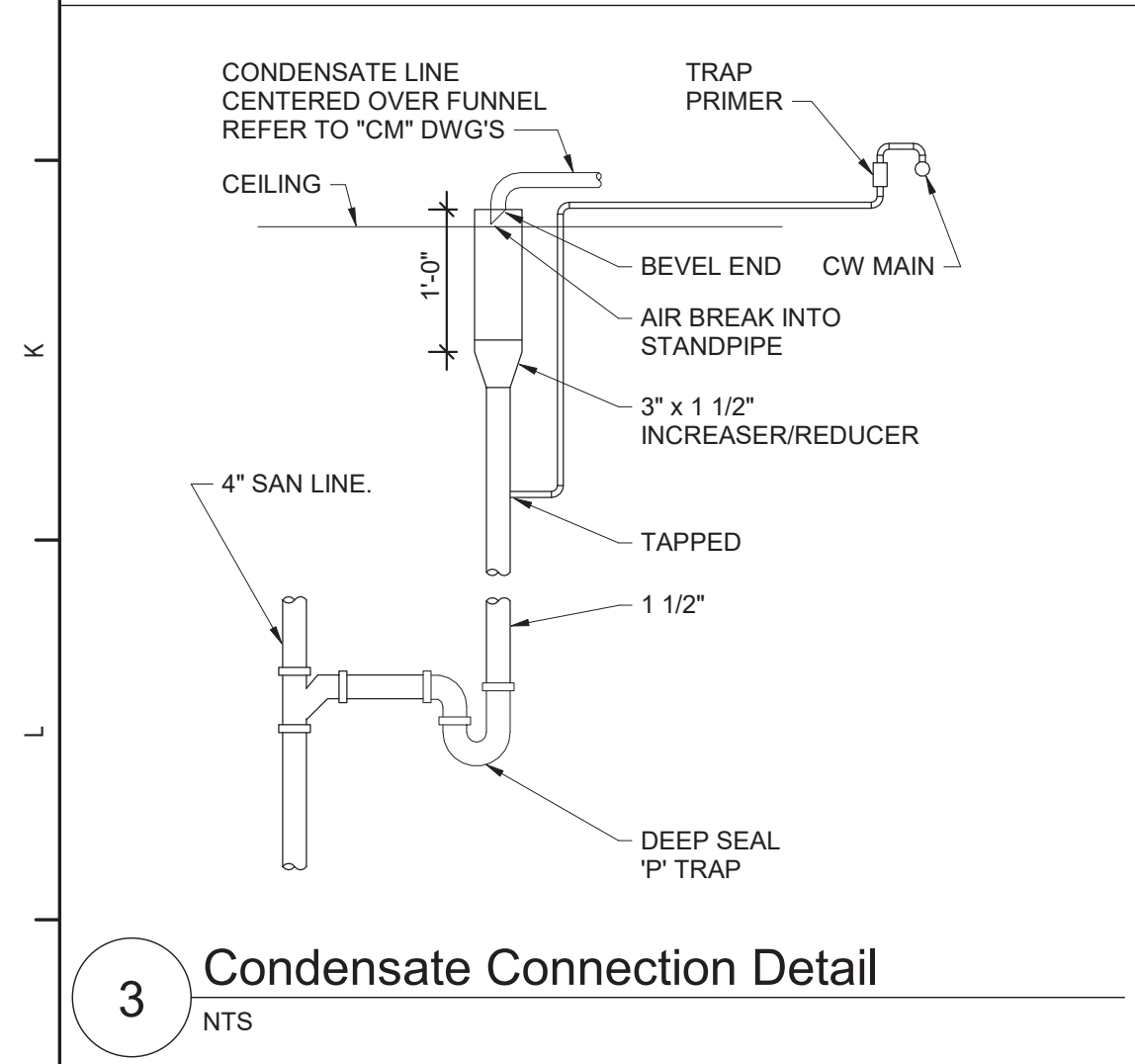
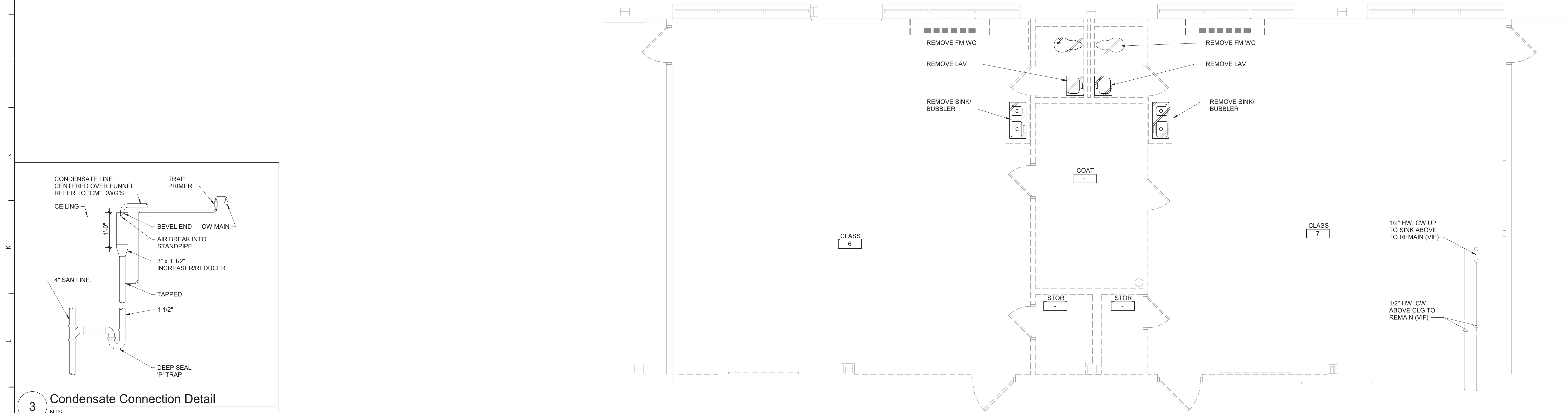
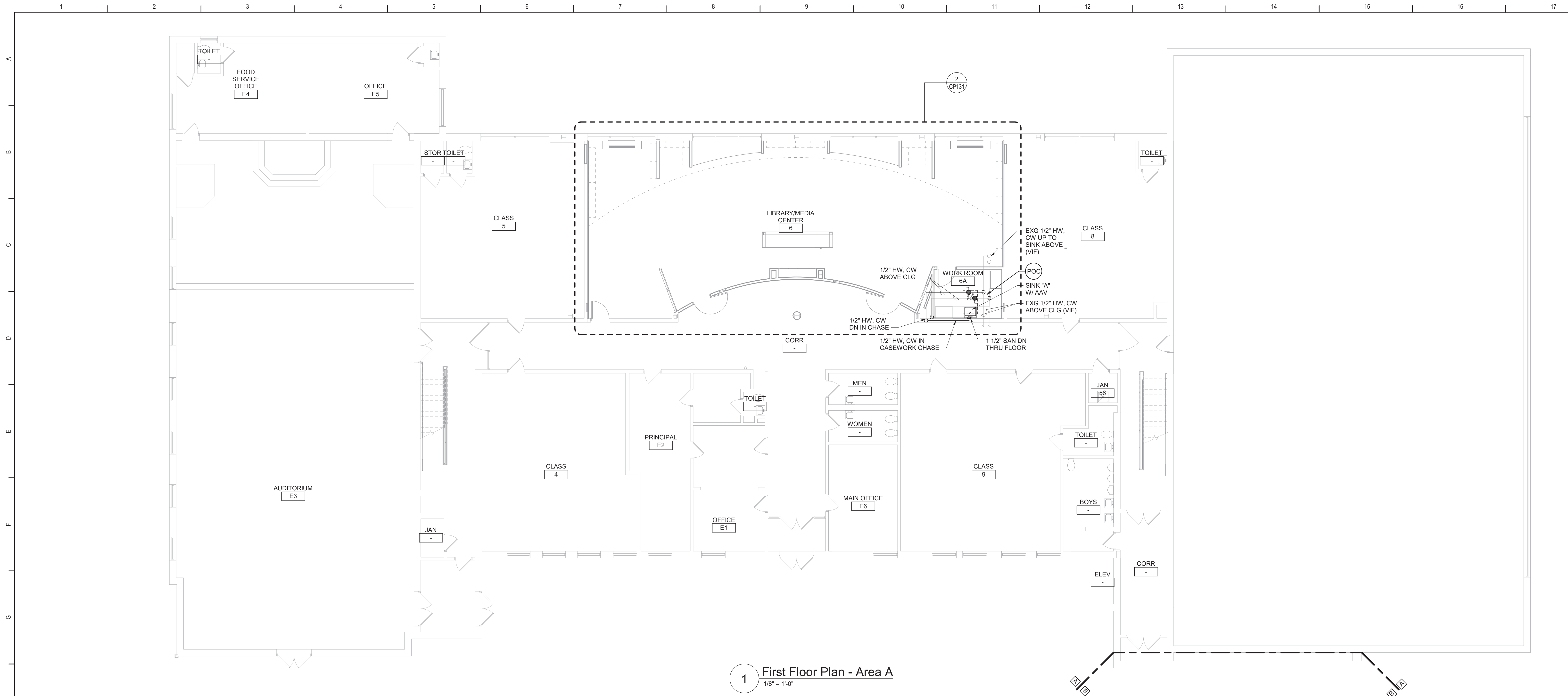


Beacon City School District  
Beacon, New York

Reconstruction to:  
Sargent Elementary School

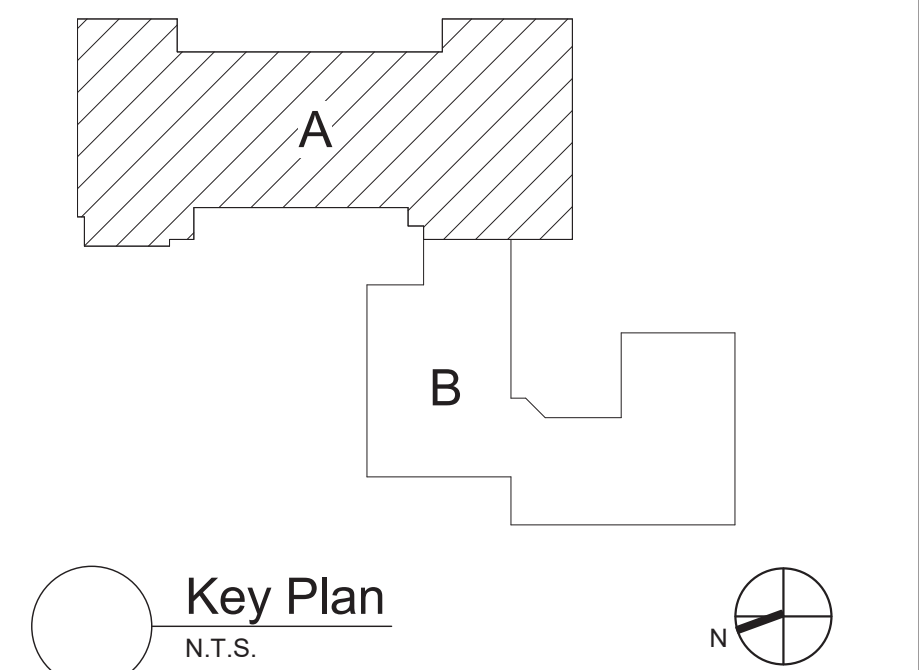
Basement Floor Plan - Area A, Details and Schedule

Drawn By: GPD / sef	Date: 10/28/2022	Drawing Number:
Project No.: 279180-22004	CP130	



Plumbing Fixture Schedule									
DWG LABEL	ROUGH-IN CONNECTION SIZE (INCHES)				BARRIER FREE	AGE GROUP	RIM HEIGHT	DESCRIPTION	NOTES
	SAN	VENT	CW	HW					
SINK "A"	1 1/2	1 1/2	1/2	1/2	YES	ADULT	-	ACCESSIBLE, STAINLESS STEEL, COUNTER MOUNTED SINK W/ MANUAL, SINGLE CONTROL MIXING FAUCET W/ SWING SPOUT, SUPPLIES, OFFSET DRAIN FITTING AND TRAP.	1, 2, 3
NOTES:									
1. SIZES INDICATED ARE MINIMUM. LARGER SIZES SPECIFICALLY INDICATED ON DRAWINGS SUPERCEDE MINIMUM SIZES INDICATED IN THIS SCHEDULE.									
2. TERMINATION STYLE AND SIZE FOR FIXTURE CONNECTIONS SHALL BE AS INDICATED BY FIXTURE MANUFACTURER.									
3. DRAIN AND TRAP CONCEALED BEHIND ADA CASEWORK PANEL. REFER TO DETAILS ON "A" SERIES DRAWINGS.									

- Plan Notes**
- A. REFER TO DRAWING NO. CP130 FOR GENERAL NOTES.
- B. REMOVE PLUMBING FIXTURES INDICATED, INCLUDING ASSOCIATED PIPING, FASTENERS, SUPPORTS, ETC., BACK TO POINTS OF CONCEALMENT WITHIN OR BEHIND REMAINING WALLS, BELOW FLOORS OR ABOVE CEILINGS.
- C. REMOVE ABANDONED ACCESSIBLE PIPING TO MAIN BRANCHES, STACKS OR RISERS AS REQUIRED TO ELIMINATE EXPOSED PIPING AND DEAD END PIPING RUNS LONGER THAN 1'-0". COORDINATE CONCEALMENT OF PIPING WITH FINAL CONSTRUCTION OF WALLS, FLOORS AND CEILINGS.



S.E.D. Control No. 13-02-00-01-0-008-020

Rev. No.: Date: Description:



complex world | CLEAR SOLUTIONS

Tetra Tech Engineers, Architects & Landscape Architects, P.C.



Beacon City School District  
Beacon, New York

Reconstruction to:  
Sargent Elementary School

First Floor Plan - Area A and Schedule

Drawn By: GPD / sef  
Date: 10/28/2022  
Project No.: 279180-22004  
Drawing Number: CP131