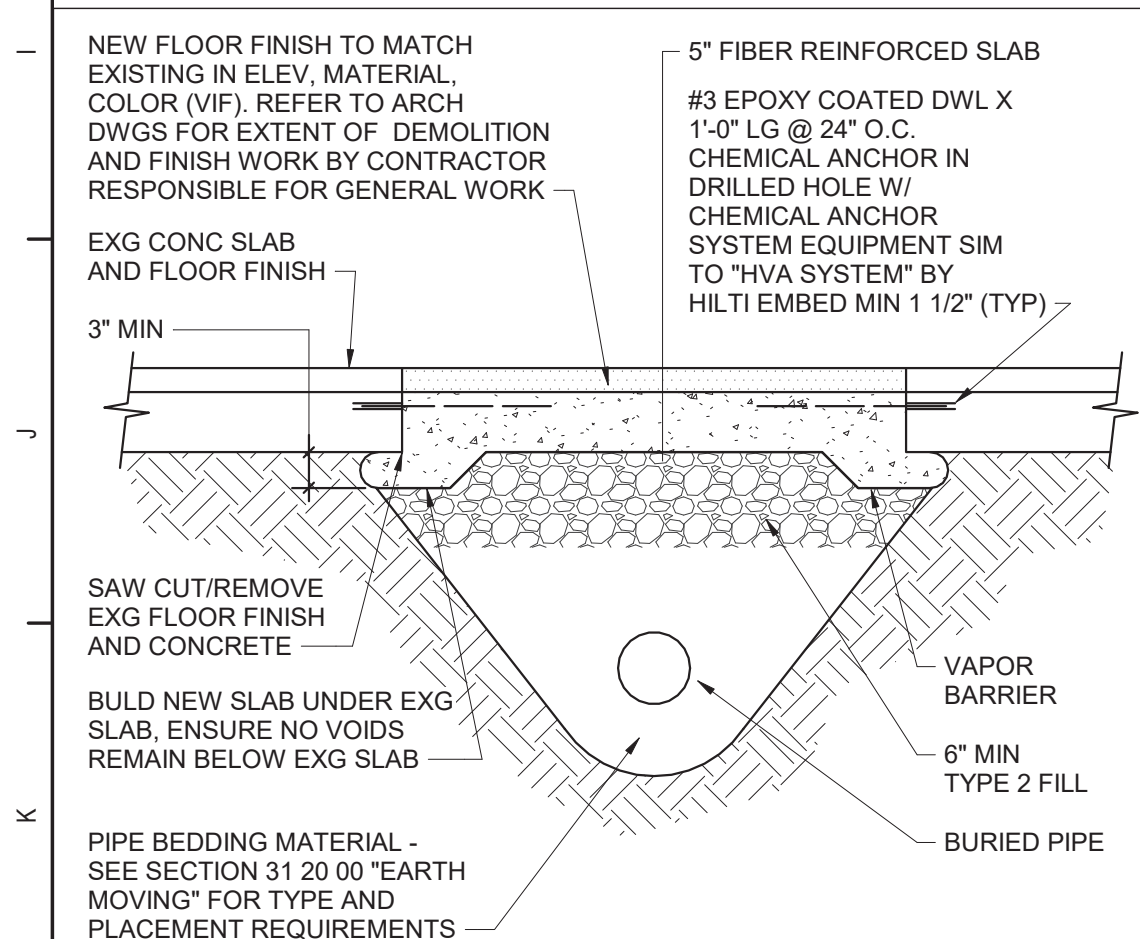
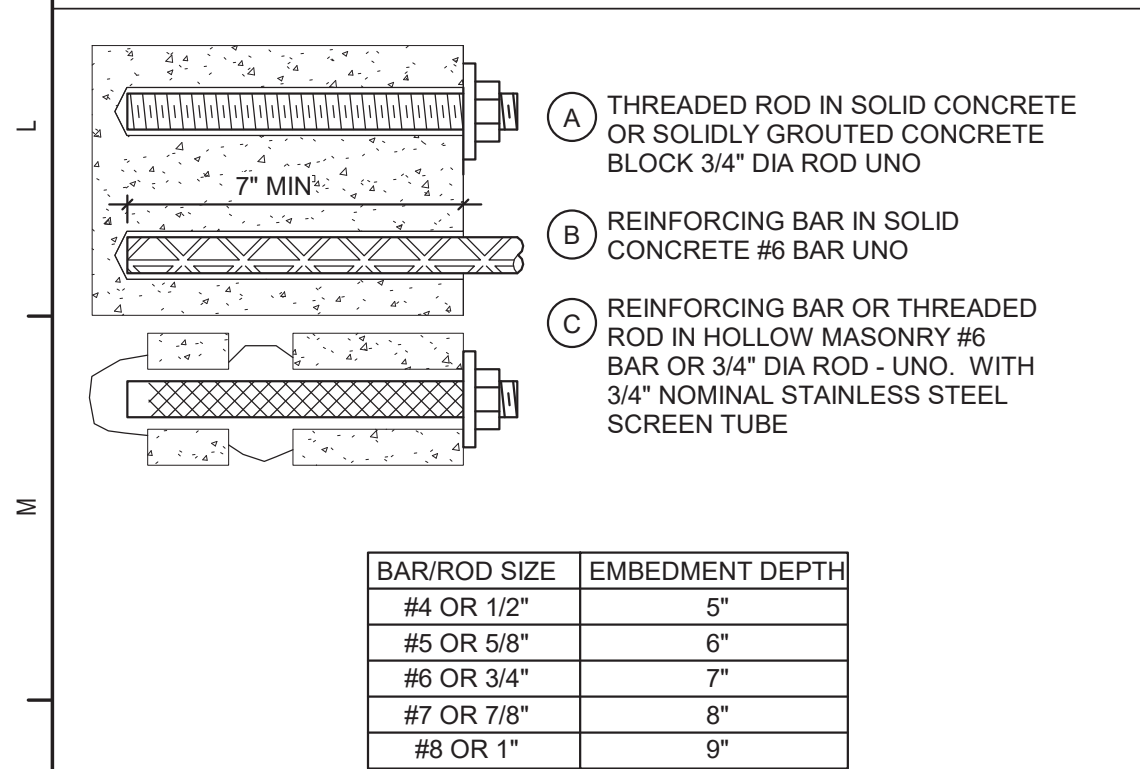


1 First Floor Plan - Area A
1/8" = 1'-0"



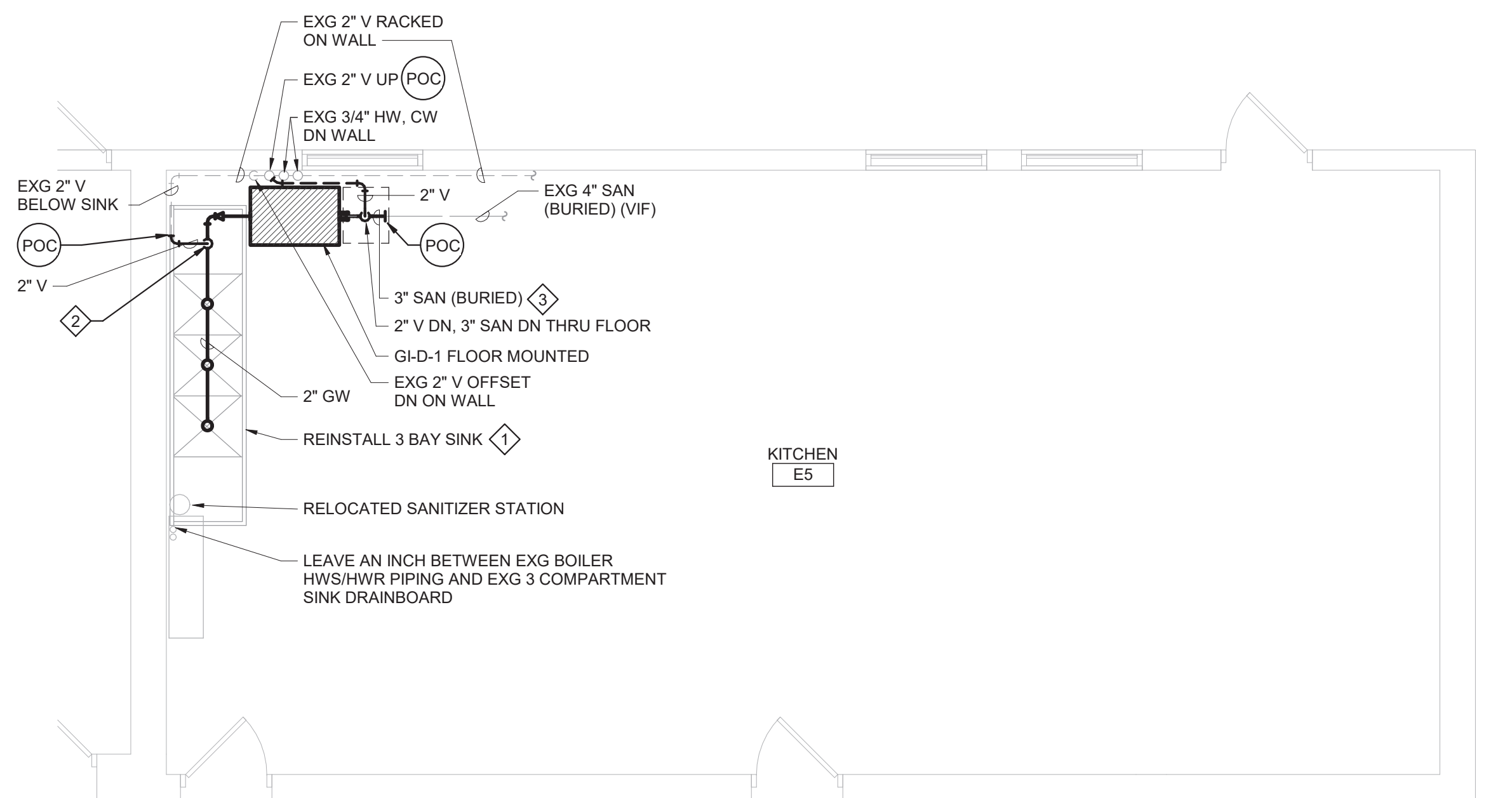
4 Trenching Below Existing Slab Detail
NTS



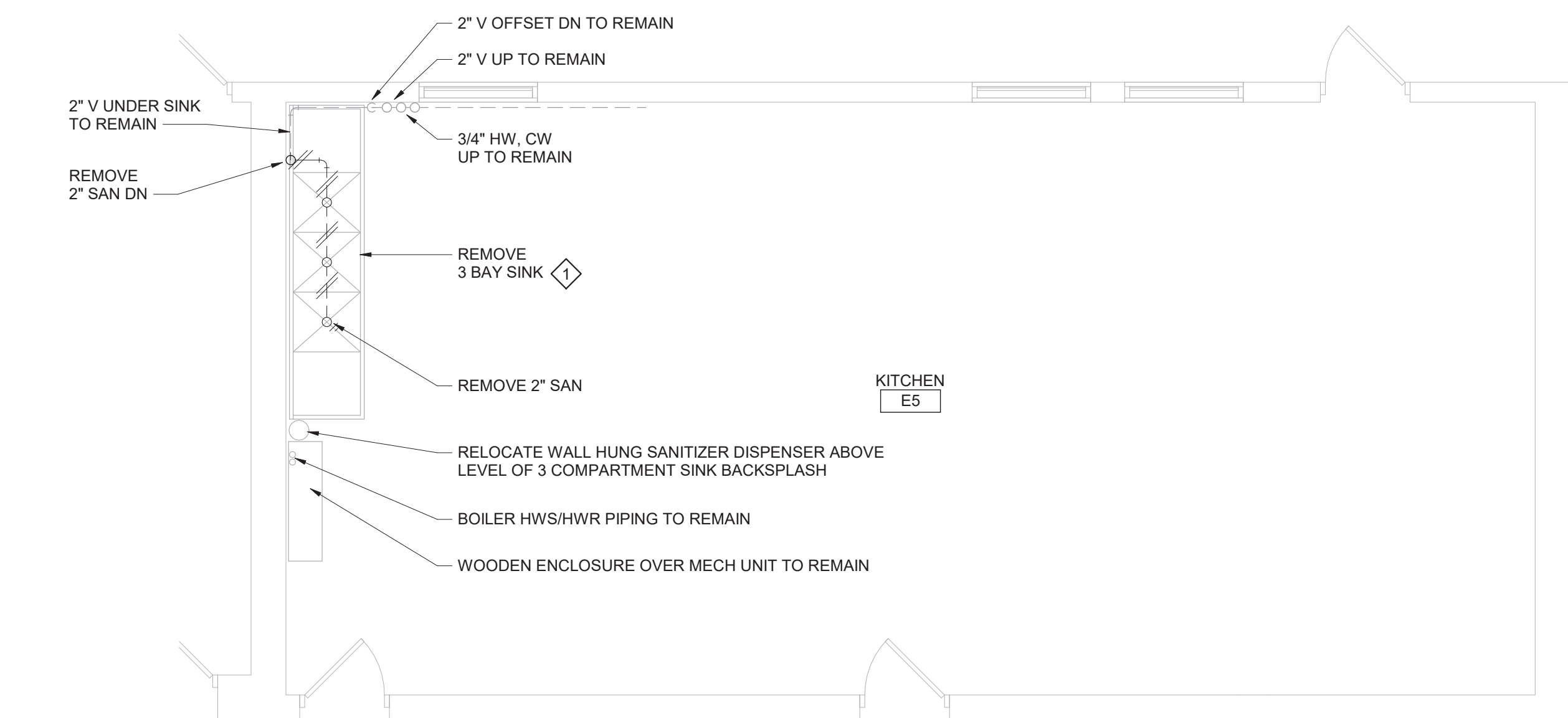
GENERAL NOTES:
1. FOR ACCEPTABLE ADHESIVE PRODUCTS REFER TO SPECIFICATIONS.
2. COMPLY WITH MANUFACTURERS REQUIREMENTS FOR INSTALLATION.

5 Typical Chemical Anchors
NTS

| Grease Interceptor Schedule | | | | | | | | | | | | | | |
|---|------------|-----------------------|------------------------------------|---------------------------|---------------|---------------------------|---|--|---------------------------|-----------------|----------------|-----------------|-----------------|-------|
| DWG LABEL | LOCATION | DESIGN MAKE AND MODEL | GREASE RETENTION CAPACITY (POUNDS) | PDI RATED FLOW RATE (GPM) | INSTALLATION | INLET / OUTLET SIZE (NPS) | CENTERLINE OF INLET / OUTLET TO BOTTOM (INCHES) | CENTERLINE OF INLET / OUTLET TO TOP (INCHES) | EXTENSION HEIGHT (INCHES) | LENGTH (INCHES) | WIDTH (INCHES) | HEIGHT (INCHES) | VENT SIZE (NPS) | NOTES |
| GH-D-1 | KITCHEN E5 | JR SMITH 8150 | 100 | 50 | FLOOR MOUNTED | 3 | 10 | 6 | N/A | 49-1/2 | 27-3/4 | 16 | 2 | 1 |
| NOTES: | | | | | | | | | | | | | | |
| 1. PROVIDE EXTERNAL FLOW CONTROL FITTING SUPPLIED BY SAME MANUFACTURER AS GREASE INTERCEPTOR. | | | | | | | | | | | | | | |



3 Kitchen E5 Plan
1/4" = 1'-0"



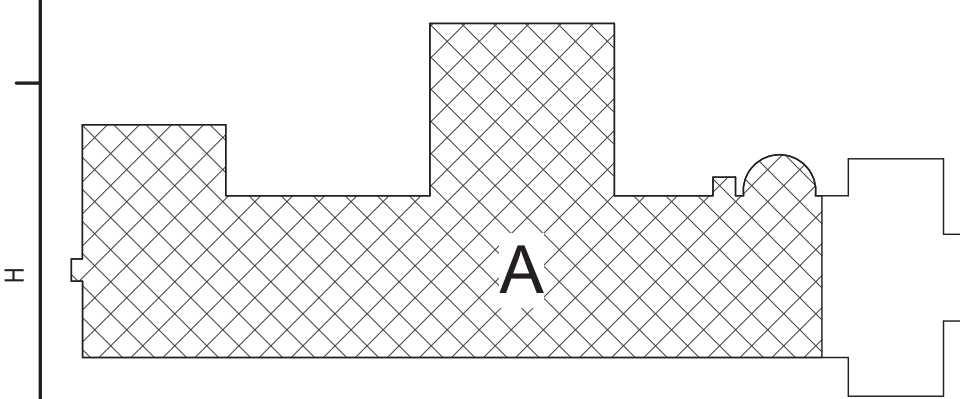
2 Kitchen E5 Demolition Plan
1/4" = 1'-0"

General Notes

- VERIFY ALL PIPING LOCATIONS, SIZES, AND ARRANGEMENTS IN FIELD PRIOR TO BID. NOTIFY ARCHITECT IN WRITING OF ANY DISCREPANCIES.
- VERIFY IN FIELD INVERT AND DIRECTION OF FLOW IN EXISTING SOIL PIPE WHERE NEW SOIL PIPE IS TO BE CONNECTED TO EXISTING SOIL PIPE.
- LEGALLY DISPOSE OF ALL DEMOLITION DEBRIS.
- INCLUDE TRENCHING, CUTTING AND PATCHING OF FLOORS, WALLS AND CEILINGS, INCLUDING CEILING TILE REMOVAL AND REPLACEMENT, WHEN REQUIRED FOR PLUMBING WORK. PATCH ABANDONED OPENINGS AND DISTURBED FINISHES TO MATCH EXISTING. TAKE PRECAUTIONS TO PROTECT STRUCTURAL INTEGRITY OF FLOOR OR WALLS WHEN TRENCHING OR CUTTING.
- MATERIALS FOR PLUMBING INSTALLATION SHALL BE NEW, UNLESS SPECIFICALLY NOTED OTHERWISE.
- REPLACE PLUMBING EQUIPMENT INDICATED. MODIFY AND EXTEND EXISTING PIPING AS REQUIRED TO MEET FIXTURE MFR'S ROUGH-IN RECOMMENDATIONS AND TO MAKE CONNECTIONS. CONCEAL PIPING WITHIN OR BEHIND WALLS, BELOW FLOORS OR ABOVE CEILINGS. PATCH DISTURBED FINISHES TO MATCH EXISTING UNLESS SPECIFICALLY NOTED OTHERWISE.

Plumbing Notes

- REMOVE 3 BAY SINK AND STORE FOR REINSTALLATION AFTER GREASE INTERCEPTOR IS INSTALLED. CLEAN TABLE BEFORE REINSTALLATION.
- FLOW CONTROL FITTING SUPPLIED BY GREASE INTERCEPTOR MANUFACTURER.
- REFER TO DETAILS 4/ DP130 AND 5/ DP130 FOR ADDITIONAL INFORMATION.



Key Plan
N.T.S.

S.E.D. Control No. 13-02-00-01-0-003-016

| Rev. No. | Date | Description |
|----------|------|-------------|
| | | |
| | | |
| | | |
| | | |



complex world
CLEAR SOLUTIONS

Tetra Tech Engineers, Architects
& Landscape Architects, P.C.



Beacon City School District
Beacon, New York

Reconstruction to:
South Ave Elementary School

First Floor Plan - Area A, Details and
Schedule

| | | |
|------------------------------|---------------------|-----------------|
| Drawn By: GPD / sef | Date: 10/28/2022 | Drawing Number: |
| Project No.: 279180-22004 | DP130 | |