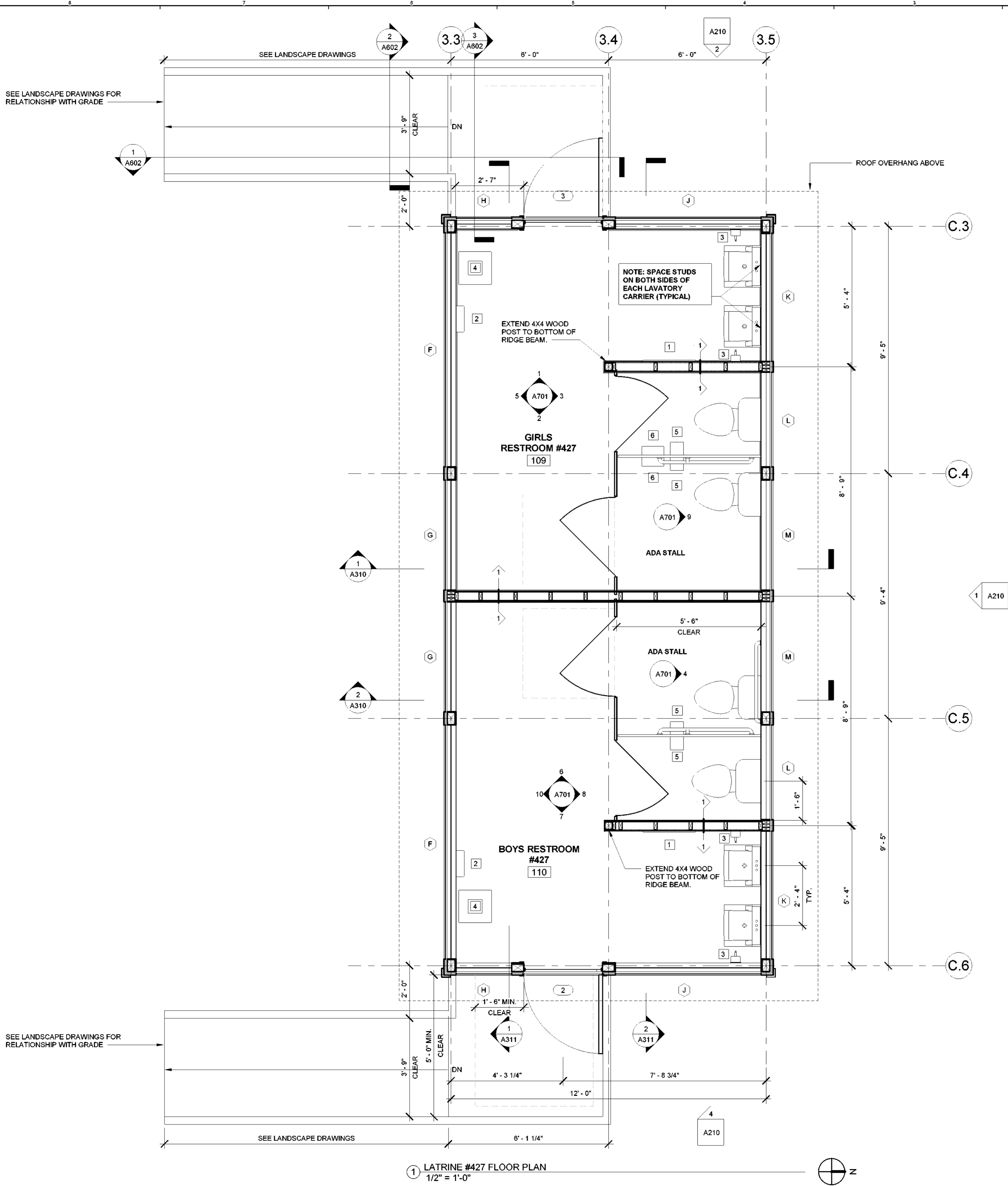


5/4/2023 4:37:44 PM



1 LATRINE #427 FLOOR PLAN
1/2" = 1'-0"

GENERAL NOTES

- REFER TO A700 FOR WALL TYPES AND TOILET ACCESSORIES LEGEND.
- REFER TO A800 FOR DOOR AND WINDOW SIZES AND DETAILS.
- REFER TO STRUCTURAL DWGS. FOR ADDITIONAL DIMENSIONS.
- T.O. OF INTERIOR PARTITIONS TO ALIGN WITH TOP OF PERIMETER BEAMS, UNLESS OTHERWISE NOTED.
- DO NOT SCALE DRAWINGS. USE FIGURED DIMENSIONS. CENTER PARTITIONS ON COLUMNS OR MULLIONS UNLESS OTHERWISE NOTED, OR USE EQUAL / EQUAL AND ALIGN NOTES TO LOCATE PARTITIONS. NOTIFY THE OWNERS REPRESENTATIVE OF MISSING DIMENSIONS AND DISCREPANCIES AND GET RESOLVED PRIOR TO PROCEEDING WITH THE WORK.
- UNLESS INDICATED OTHERWISE, ALL DIMENSIONS ARE TO/FROM CENTER OF STUD, FACE OF CONC., OR STRUCT. COLUMN GRIDS.
- SEE FINISH SCHEDULE AND NOTES FOR WALL BASE MATERIALS. IT IS INTENDED THAT THE FACE OF EVERY CONTINUOUS PARTITION BE FLUSH WITHOUT OFFSETS. CHANGES IN PARTITION THICKNESS SHALL OCCUR AT CORNERS OR OTHER FEATURES WHICH INTERRUPT THE PLANES OF THE PARTITION.
- THE DISTANCE FROM THE CLEAR FACE OF DOOR JAMB TO ADJACENT PERPENDICULAR WALL SHALL BE 6" IN STUD WALL CONSTRUCTION, UNLESS OTHERWISE NOTED.
- PROVIDE CONTINUOUS CONTROL JOINTS AT 30' - 0" O.C. MAXIMUM VERTICAL AND HORIZONTAL IN ALL WALLS AND CEILINGS (UON). COORDINATE ACTUAL LOCATIONS IN THE FIELD WITH OWNER'S REPRESENTATIVE.
- PROVIDE PROTECTION FOR ALL CONCEALED ELECTRICAL CONDUCTORS AND PLUMBING LINES AT ALL PLATES AND STUDS AS REQUIRED.
- DO NOT CUT THROUGH FRAMING UNLESS APPROVED BY DIRECTOR'S REPRESENTATIVE.
- COORDINATE FLOOR FRAMING WITH PLUMBING CONTRACTOR AND ADJUST FLOOR FRAMING AS REQUIRED FOR TOILET, SHOWER AND MOP SINK OUTLETS. PROVIDING HEADERS THE SAME SIZE AS FLOOR JOISTS WITH STEEL JOIST HANGERS AS REQUIRED. PROVIDE SOLID BLOCKING UNDER FLOOR DECK AND BETWEEN FLOOR JOISTS AT/ UNDER SUCH PLUMBING FIXTURES AS REQUIRED AND SIMILAR TO DETAIL 7/A600.



New York State
Parks, Recreation and
Historic Preservation

Governor Kathy Hochul

Commissioner Erik Kulesseid

IT IS A VIOLATION OF STATE EDUCATION LAW FOR ANY PERSON, UNLESS UNDER THE DIRECTION OF A LICENSED ARCHITECT/ENGINEER, TO ALTER THIS DOCUMENT IN ANYWAY. ALTERATIONS MUST HAVE THE SEAL AFFIXED ALONG WITH A DESCRIPTION OF THE ALTERATIONS, DATE AND ARCHITECTS/ENGINEER'S SIGNATURE. COPYRIGHT © 2023

Architect:

Saratoga Associates
21 Congress Street, Suite 201
Saratoga Springs, NY 12866

SARATOGA
ASSOCIATES

Landscape Architects, Architects,
Engineers, and Planners, P.C.

Surveyor/ Structural/ MEP Engineer:

LaBella Associates
105 N. Tioga Street, Suite 200
Ithaca, NY 14850



LaBella

Certificate of Authorization Number:
Professional Engineering: 015281
Land Surveying: 017973
Geological: 018750

Palisades Region

Palisades Interstate Park Commission
Bear Mountain, New York 10911
(845) 786-2701
Executive Director: Joshua Laird

Project Title:
CAMP JUNIOR ON LAKE TIORATI -
PHASE 3

Project Location:
HARRIMAN STATE PARK

Key Plan

REVISIONS

Rev No	Description	Date

Drawn By:

KET, LLH

Design By:

LLH

Checked By:

CTS

Approved By:

CTS

Date:

3/16/23

Sheet Title:

FLOOR PLAN -
LATRINE #427

Bid Documents

Project Number:

21059.23

Seal and Signature



Drawing Number:

A101