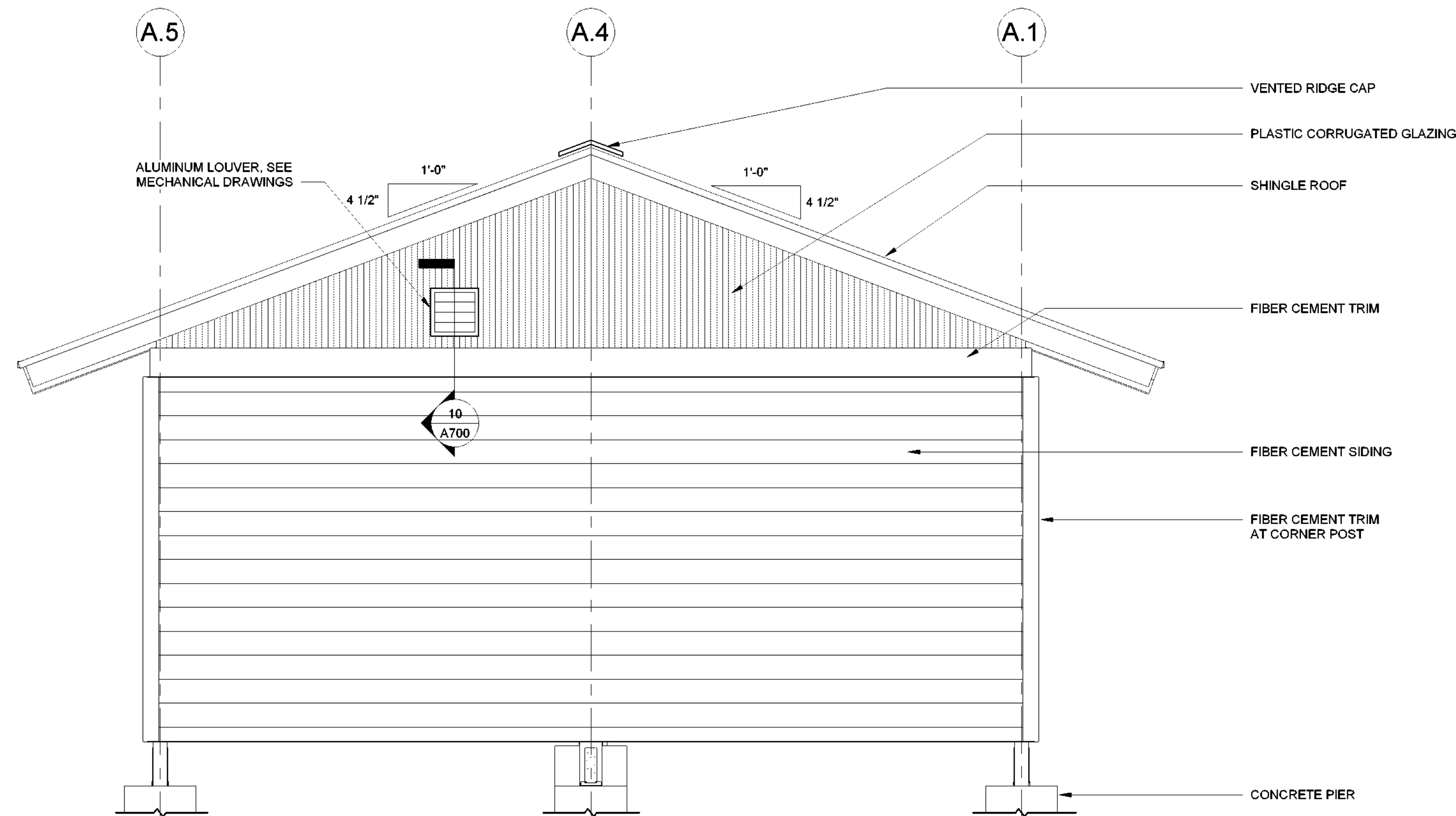


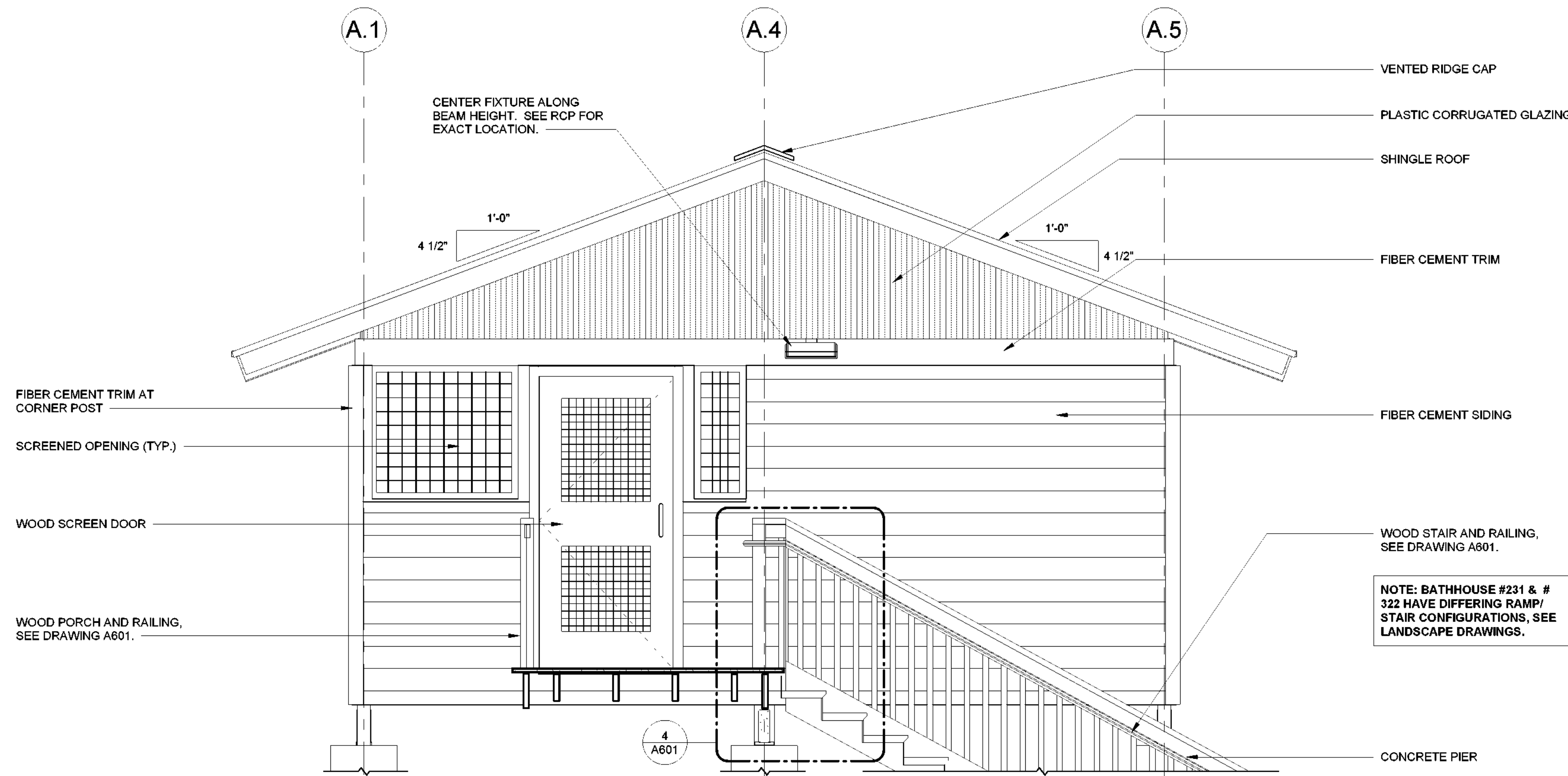
H
G
F
E
D
C
B
A
5/4/2023 4:37:45 PM

BATHHOUSE #231 & #322 GENERAL NOTES:

1. GRADE NOT SHOWN AS BATHHOUSE #231 & #322 HAVE DIFFERING SITE CONDITIONS. SEE LANDSCAPE DRAWINGS.
2. SEE DRAWING A601 FOR RAMP DETAILS AT BATHHOUSE #231. SEE DRAWING A602 FOR RAMP DETAIL AT BATHHOUSE #322. SIM.
3. ALL EXPOSED WOOD FRAMING, ROOF DECKING, SIDING, AND TRIM (NON PRESSURE-TREATED) TO BE PAINTED. SEE SPECIFICATION SECTION 09 91 01.
4. SEE MECHANICAL DRAWINGS FOR DUCT/PIPE PENETRATION LOCATIONS. SEE DETAIL 9/A700 FOR WALL OPENING REQUIREMENTS.



① BATHHOUSE #231 & #322 - EAST
1/2" = 1'-0"



② BATHHOUSE #231 & #322 - WEST
1/2" = 1'-0"

Architect:
Saratoga Associates
21 Congress Street, Suite 201
Saratoga Springs, NY 12866
SARATOGA ASSOCIATES
Landscape Architects, Architects
Engineers, and Planners, P.C.

Surveyor/ Structural/ MEP Engineer:
LaBella Associates
105 N. Tioga Street, Suite 200
Ithaca, NY 14850
LaBella
Certificate of Authorization Number:
Professional Engineering: 015281
Land Surveying: 017973
Geological: 018750

Palisades Region
Palisades Interstate Park Commission
Bear Mountain, New York 10911
(845) 786-2701
Executive Director: Joshua Laird

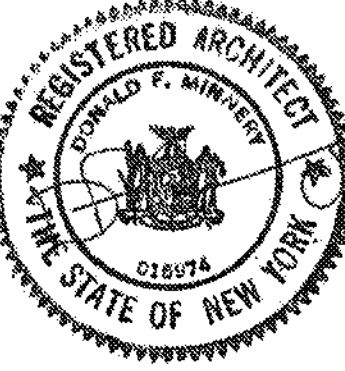
Project Title:
CAMP JUNIOR ON LAKE TIORATI -
PHASE 3

Project Location:
HARRIMAN STATE PARK

Key Plan

REVISIONS

Rev No	Description	Date

Drawn By: KET, LLH	
Design By: LLH	
Checked By: CTS	
Approved By: CTS	
Date: 3/16/23	

Sheet Title:
ELEVATIONS -
BATHHOUSE
#231 & #322
A200

Bid Documents
Project Number:
21059.23