

5/4/2023 4:37:46 PM

**BATHHOUSE #231 & #322 GENERAL NOTES:**

1. GRADE NOT SHOWN AS BATHHOUSE #231 & #322 HAVE DIFFERING SITE CONDITIONS. SEE LANDSCAPE DRAWINGS.
2. SEE DRAWING A601 FOR RAMP DETAILS AT BATHHOUSE #231, SEE DRAWING A602 FOR RAMP DETAIL AT BATHHOUSE #322. SIM.
3. ALL EXPOSED WOOD FRAMING, ROOF DECKING, SIDING, AND TRIM (NON PRESSURE-TREATED) TO BE PAINTED. SEE SPECIFICATION SECTION 09 91 01.
4. SEE MECHANICAL DRAWINGS FOR DUCT/ PIPE PENETRATION LOCATIONS. SEE DETAIL 9/A700 FOR WALL OPENING REQUIREMENTS.



Governor Kathy Hochul Commissioner Erik Kulesseid

IT IS A VIOLATION OF STATE EDUCATION LAW FOR ANY PERSON, UNLESS UNDER THE DIRECTION OF A LICENSED ARCHITECT/ENGINEER, TO ALTER THIS DOCUMENT IN ANYWAY. ALTERATIONS MUST HAVE THE SEAL AFFIXED ALONG WITH A DESCRIPTION OF THE ALTERATIONS, DATE AND ARCHITECT/ENGINEER'S SIGNATURE. COPYRIGHT © 2023

**Architect:**  
Saratoga Associates  
21 Congress Street, Suite 201  
Saratoga Springs, NY 12866

**SARATOGA ASSOCIATES**  
Landscape Architects, Architects  
Engineers, and Planners, P.C.

**Surveyor/ Structural/ MEP Engineer:**  
LaBella Associates  
105 N. Tioga Street, Suite 200  
Ithaca, NY 14850

**LaBella**

Certificate of Authorization Number:  
Professional Engineering: 018281  
Land Surveying: 017973  
Geological: 018750

**Palisades Region**  
Palisades Interstate Park Commission  
Bear Mountain, New York 10911  
(845) 786-2701  
Executive Director: Joshua Laird

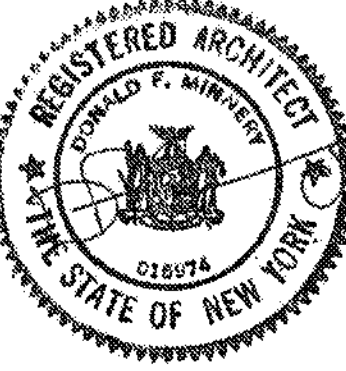
**Project Title:**  
CAMP JUNIOR ON LAKE TIORATI -  
PHASE 3

**Project Location:**  
HARRIMAN STATE PARK

**Key Plan**

**REVISIONS**

Rev No	Description	Date

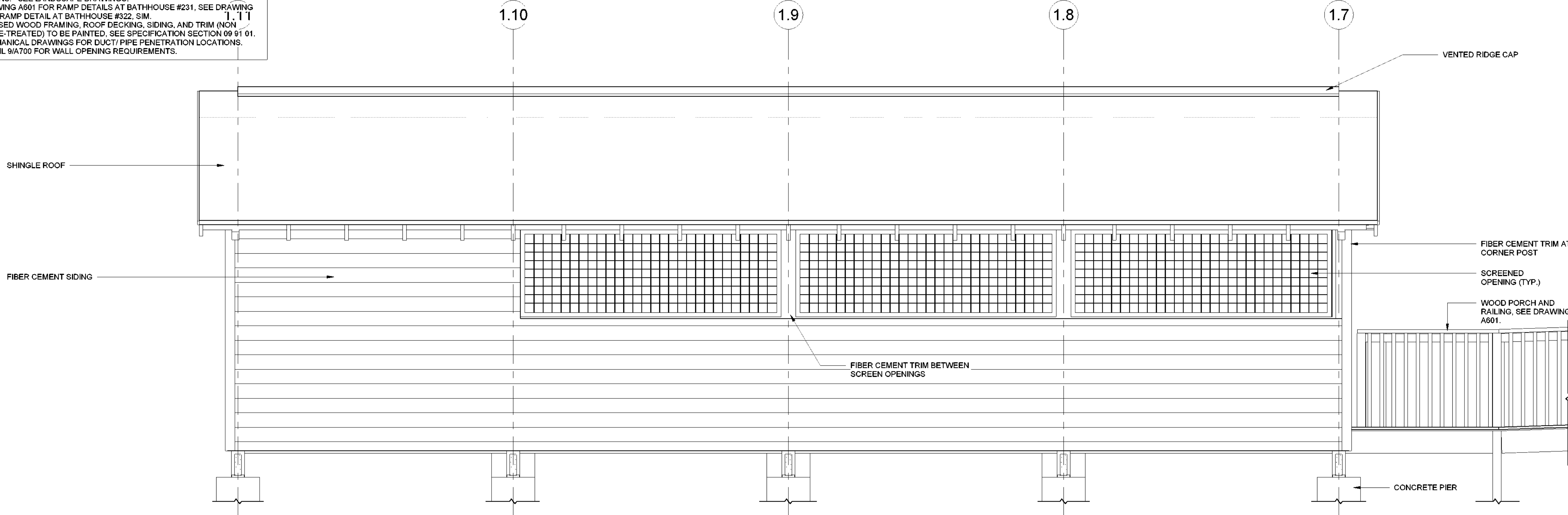
Drawn By: <b>KET, LLH</b>	Seal and Signature 
Design By: <b>LLH</b>	
Checked By: <b>CTS</b>	
Approved By: <b>CTS</b>	
Date: <b>3/16/23</b>	

**Sheet Title:**  
ELEVATIONS -  
BATHHOUSE  
#231 & #322

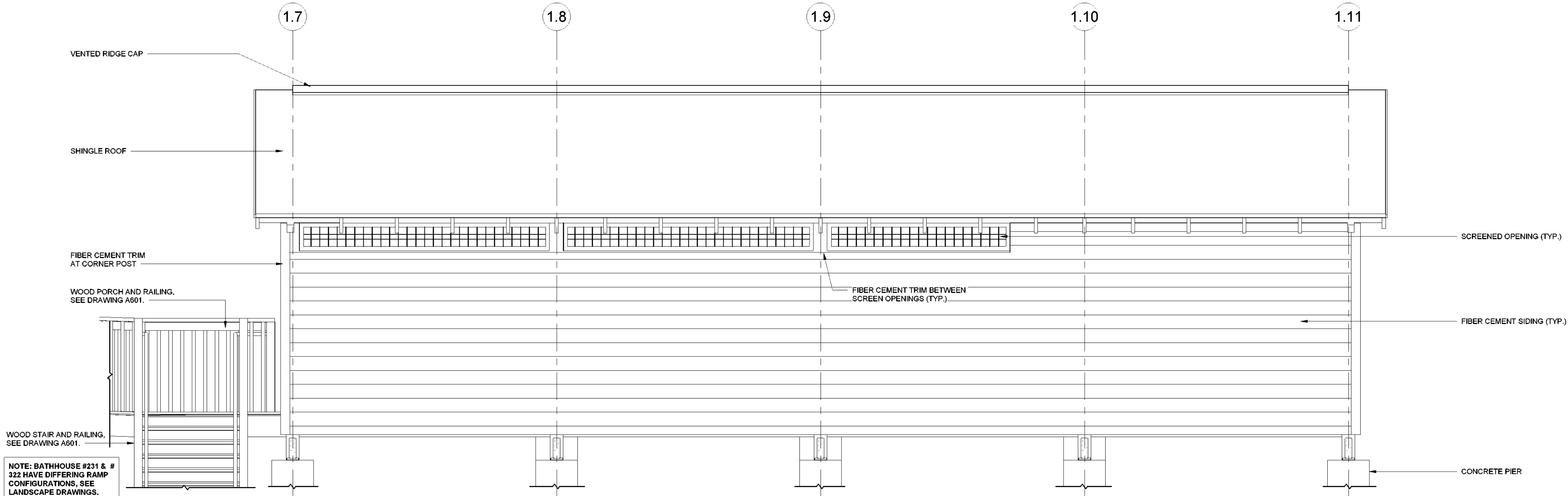
**Drawing Number:**  
**A201**

**Bid Documents**

Project Number:  
**21059.23**



① BATHHOUSE #231 & #322 - NORTH  
1/2" = 1'-0"



② BATHHOUSE #231 & #322 - SOUTH  
1/2" = 1'-0"

**NOTE: BATHHOUSE #231 & #322 HAVE DIFFERING RAMP CONFIGURATIONS. SEE LANDSCAPE DRAWINGS.**